



# Working Together for a Healthy and Thriving Marysville

---

**Shawn Frederick  
Administrative Officer**

**March 2022**



**Community**  
**DATA & TRENDS**

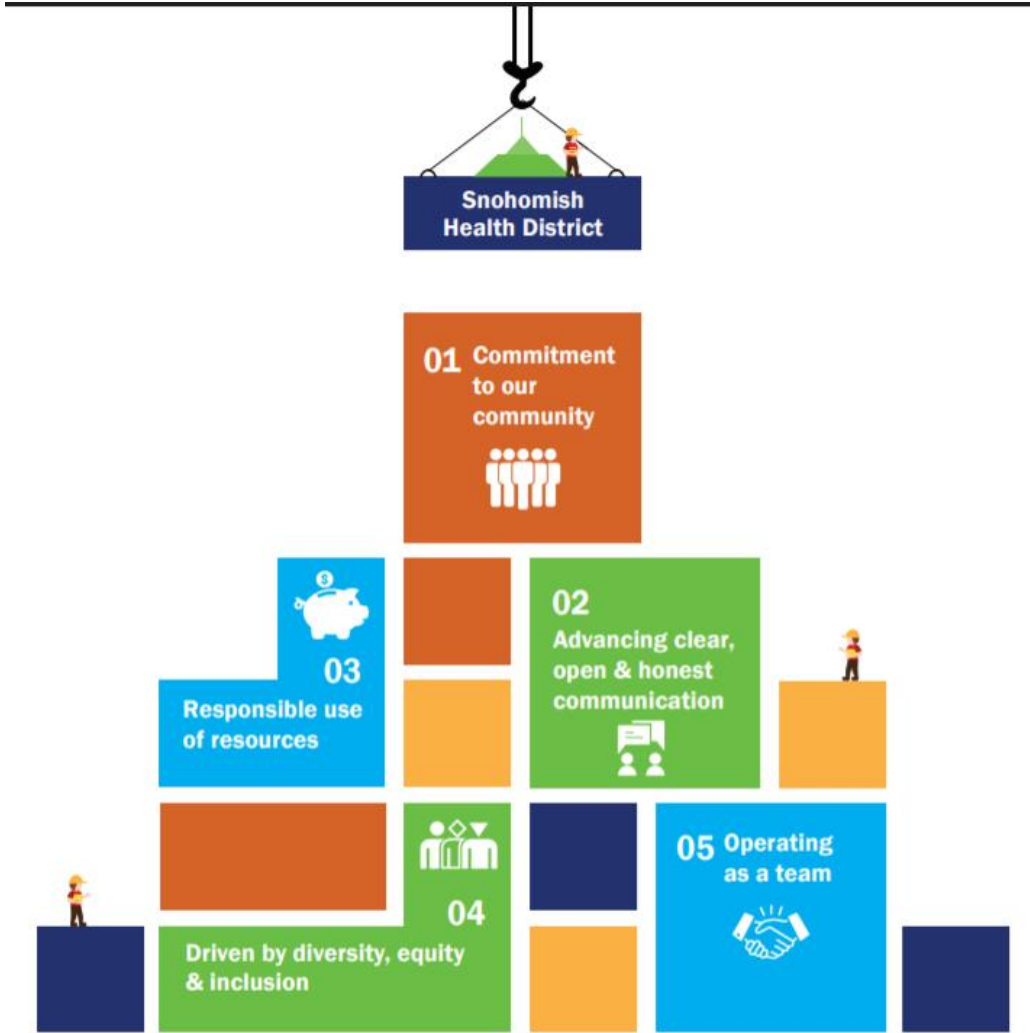




STRATEGIC GOAL:

**BUILD A MORE SUSTAINABLE ORGANIZATION**

# Building for the Future





STRATEGIC GOAL:

**REDUCE THE RATE OF  
COMMUNICABLE  
DISEASES AND OTHER  
NOTIFIABLE CONDITIONS**

**COUNTYWIDE  
TRENDS FOR 2021 VS. 2020**

Chlamydia ↓

Gonorrhea ↔

Hepatitis B & C ↓

HIV (new cases) ↔

Pertussis ↓

Syphilis ↑

Tuberculosis ↔

# COVID-19: Looking Ahead



FOCUSED ON PRESERVING  
HOSPITAL CAPACITY



PREPARING FOR VACCINES  
BECOMING AVAILABLE FOR  
YOUNGER CHILDREN



RECENT LIFTING OF  
MASKING REQUIREMENTS  
IN MOST SETTINGS

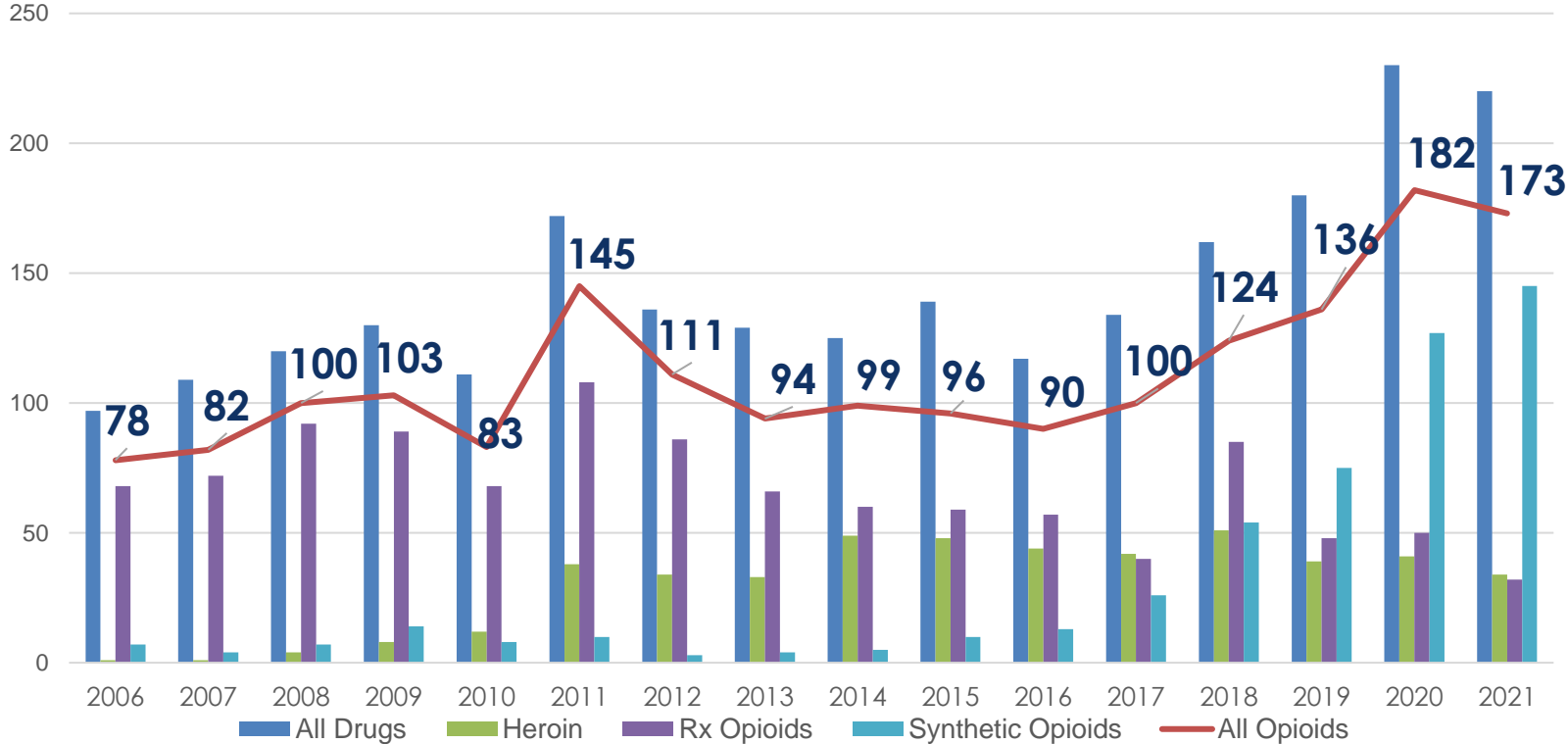
# Preventing or Reducing Chronic Disease and Injuries

COUNTYWIDE  
TRENDS FOR 2021 VS. 2020

Drug Overdoses\* ↔

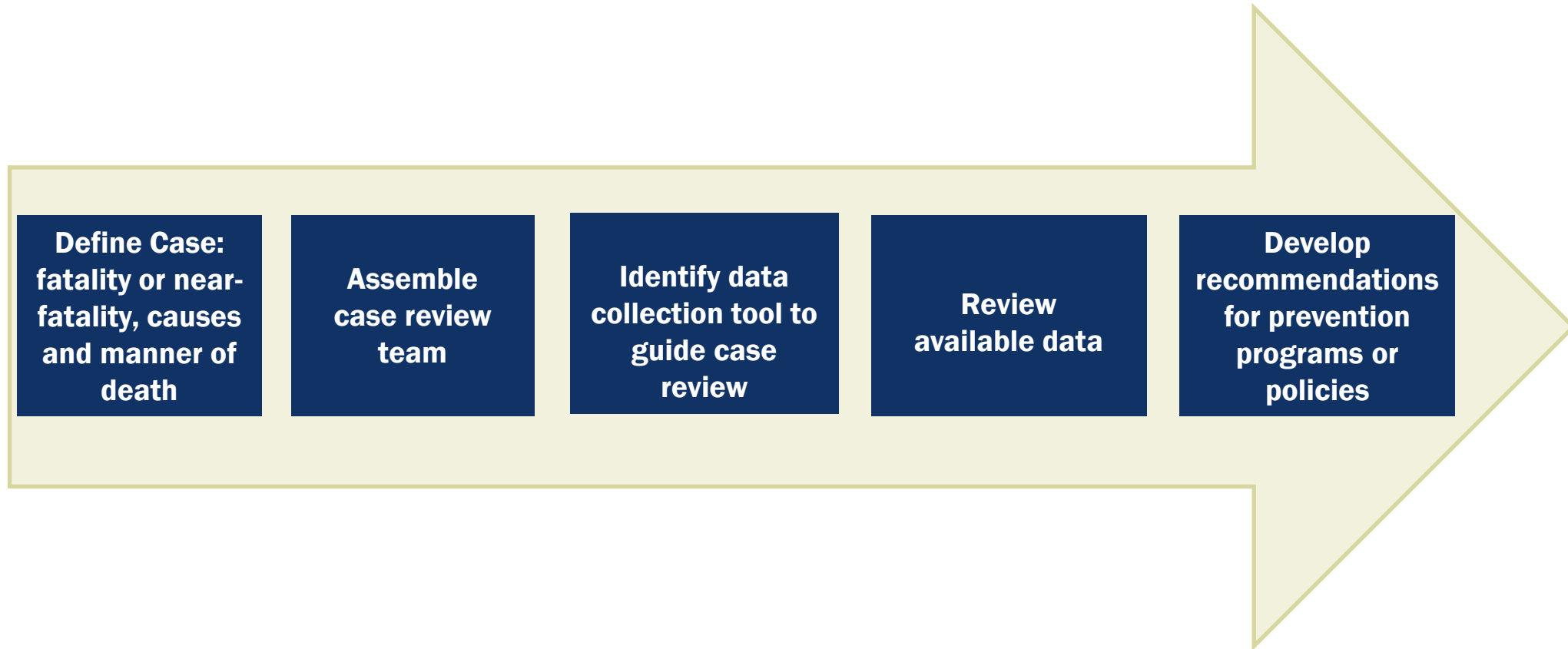
Youth Suicides ↓

Opioid-Related Deaths by Type  
Snohomish County, 2006-2021\*  
(\*2020 & 2021 data are preliminary as of 2/21/22)



Source: Washington State Department of Health

# Adult Fatality Reviews – SHB 1074







**MARYSVILLE  
TRENDS FOR 2021**

**291 Annual Food Permits**

**284 Food Inspections**

**40 Food Complaints**

**24 Pool Inspections**

**28 Solid Waste Complaints**

**5 Sewage Complaints**

STRATEGIC GOAL:

**PROVIDE HIGH-QUALITY  
ENVIRONMENTAL HEALTH SERVICES**

# Environmental Health

- ✓ New resources coming online due to new state funds
- ✓ Working on an initiative to digitize our paper records
- ✓ Food Safety code revision took effect March 1<sup>st</sup>
- ✓ School safety inspections in progress
- ✓ Solid waste complaints on nuisance
- ✓ Front counter is fully open





**OUTREACH & EDUCATION  
ACTIVITIES – 2021**

**330 Families Provided w/ Access  
to Baby & Child Dentistry Info**

**600+ Child Care Consultations**

**1,192 Children w/ Special Health  
Care Needs Services Performed**

**3,635 STARS Courses Completed**

**3,891 People & Providers  
Reached w/ Oral Health  
Outreach**

STRATEGIC GOAL:

**IMPROVE MATERNAL,  
CHILD & FAMILY  
HEALTH OUTCOMES**





STRATEGIC GOAL:

**ADDRESS ONGOING, CRITICAL  
PUBLIC HEALTH ISSUES**



# Updating the Community Health Assessment

**Executive Summary**

The Snohomish Health District is pleased to share the 2018 Community Health Assessment for Snohomish County. District staff and community partners analyzed more than 150 health indicators to identify the top priorities and other subject matter experts. The goal of this report is to share the results of that analysis.

Since 1959, the District has been responsible for the health of the people of Snohomish County. The District conducted a community health assessment (CHA) every five years since 2009. The CHA is a key document used to inform more in-depth analysis of the top issues. The work culminates in a community health improvement plan (CHIP) for addressing the county's biggest health concerns. The hope is that this assessment will assist civic leaders, community members, and non-profit organizations in their health improvement planning, as well.

**SIGNIFICANT COMMUNITY NEEDS**

Epidemiologists collected data on community health indicators through qualitative and quantitative means. This data relies on hard numbers, while qualitative data includes richer descriptive information that can't always be expressed with a number. When possible, county data was compared to state and national figures, as well as previous years and Healthy People 2020 goals. These comparisons help ascertain the current status of indicators in the county and whether the indicators are trending in a positive or negative direction.

When this data on these indicators were presented to the data task force, the group worked to whittle the list down to eight that members felt should be examined more closely. These eight were: suicide; opioid misuse; children's oral health; housing; access to primary care; youth obesity; and health care access to the American Indian/Alaska Native population. Three community events, called data walks, were held in 2018. Participants examined and shared observations on these eight topics. Participants then ranked the topics in order of importance. The rankings are shown below.

| Indicator          | Lynnwood walk                             | Monroe walk                               | Total ranking                             |
|--------------------|---|---|---|
| Health care access | Suicide                                   | Youth mental health                       | Youth mental health                       |
| Health care access | Youth mental health                       | Suicide                                   | Suicide                                   |
| Health care access | Opioid misuse                             | American Indian/Alaska Native disparities | Opioid misuse                             |
| Health care access | American Indian/Alaska Native disparities | Opioid misuse                             | Opioid misuse                             |
| Health care access | Housing                                   | Housing                                   | Housing                                   |
| Health care access | Housing                                   | American Indian/Alaska Native disparities | American Indian/Alaska Native disparities |
| Health care access | Health care access                        | Youth obesity                             | Youth obesity                             |
| Health care access | Youth obesity                             | Health care access                        | Health care access                        |
| Health care access | Children's oral health                    | Children's oral health                    | Children's oral health                    |

**Appendix B: Data Tables (cont.)**

| Indicator                 | 2018  | 2017  | 2016  | 2015 | 2014 | 2013 | 2012 | 2011 | 2010 | 2009 | 2008 | 2007 | 2006 | 2005 | 2004 | 2003 | 2002 | 2001 | 2000 | Source   |
|---------------------------|-------|-------|-------|------|------|------|------|------|------|------|------|------|------|------|------|------|------|------|------|--|
| Smoking during pregnancy  | 6.6%  | 7.1%  | 6.9%  | --   | --   | --   | --   | --   | --   | --   | --   | --   | --   | --   | --   | --   | --   | --   | --   | HP 2020 6.6% (Goal)  |
| SNAP recipients (per 100) | 11.1% | 13.3% | 12.6% | --   | --   | --   | --   | --   | --   | --   | --   | --   | --   | --   | --   | --   | --   | --   | --   | 2018 Washington State Center for Health Statistics; 2017 National VMI Statistics Report  |
| TEC e-coli rate (per 100) | 4.2   | 5.7   | 2.2   | --   | --   | --   | --   | --   | --   | --   | --   | --   | --   | --   | --   | --   | --   | --   | --   | HP 2020 4.6% (Goal)  |
| Substance use (per 100)   | 177.2 | 158.7 | n/a   | --   | --   | --   | --   | --   | --   | --   | --   | --   | --   | --   | --   | --   | --   | --   | --   | 2015-2017 American Community Survey 5-year; 2017 Washington State Comprehensive Disease Epidemiology Office 2016 CDC Notifiable Diseases |
| Substance use (per 100)   | 53.0  | 44.9  | n/a   | --   | --   | --   | --   | --   | --   | --   | --   | --   | --   | --   | --   | --   | --   | --   | --   | 2015-2017 American Community Survey 5-year; 2017 Washington State Comprehensive Disease Epidemiology Office 2016 CDC Notifiable Diseases |
| Substance use (per 100)   | 18.1  | 16.2  | 14.0  | n/a  | --   | --   | --   | --   | --   | --   | --   | --   | --   | --   | --   | --   | --   | --   | --   | 2018 Washington State Center for Health Statistics   |
| Substance use (per 100)   | 3.8%  | 21.9  | n/a   | --   | --   | --   | --   | --   | --   | --   | --   | --   | --   | --   | --   | --   | --   | --   | --   | HP 2020 10.2   |
| Substance use (per 100)   | 7.6%  | 4.0%  | 4.4%  | --   | --   | --   | --   | --   | --   | --   | --   | --   | --   | --   | --   | --   | --   | --   | --   | 2018 Washington State Center for Health Statistics; 2017 CDC Wonder  |
| Substance use (per 100)   | 2.5%  | 8.7%  | 12.1% | --   | --   | --   | --   | --   | --   | --   | --   | --   | --   | --   | --   | --   | --   | --   | --   | 2018 Washington State Center for Health Statistics; 2017 Washington State Center for Health Statistics                                   |
| Substance use (per 100)   | 6.0%  | 2.6%  | 5.3%  | --   | --   | --   | --   | --   | --   | --   | --   | --   | --   | --   | --   | --   | --   | --   | --   | 2018 Washington State Labor Market and Performance Analysis; U.S. Bureau of Labor & Statistics   |
| Substance use (per 100)   | 1%    | 8.9%  | 12.2% | --   | --   | --   | --   | --   | --   | --   | --   | --   | --   | --   | --   | --   | --   | --   | --   | HP 2020 10%  |
| Substance use (per 100)   | 9.5%  | n/a   | --    | --   | --   | --   | --   | --   | --   | --   | --   | --   | --   | --   | --   | --   | --   | --   | --   | 2017 U.S. Census Bureau  |
| Substance use (per 100)   | 11.0% | n/a   | --    | --   | --   | --   | --   | --   | --   | --   | --   | --   | --   | --   | --   | --   | --   | --   | --   | 2013-2017 American Community Survey 5-year   |
| Substance use (per 100)   | 19.5% | n/a   | --    | --   | --   | --   | --   | --   | --   | --   | --   | --   | --   | --   | --   | --   | --   | --   | --   | 2018 HYS   |
| Substance use (per 100)   | 26.6% | n/a   | --    | --   | --   | --   | --   | --   | --   | --   | --   | --   | --   | --   | --   | --   | --   | --   | --   | 2018 HYS   |
| Substance use (per 100)   | 1.5%  | 27.0% | --    | --   | --   | --   | --   | --   | --   | --   | --   | --   | --   | --   | --   | --   | --   | --   | --   | 2018 HYS   |
| Substance use (per 100)   | 1%    | 11.4% | --    | --   | --   | --   | --   | --   | --   | --   | --   | --   | --   | --   | --   | --   | --   | --   | --   | 2018 HYS   |
| Substance use (per 100)   | 4.50% | --    | --    | --   | --   | --   | --   | --   | --   | --   | --   | --   | --   | --   | --   | --   | --   | --   | --   | 2018 HYS; 2017 YRBS  |
| Substance use (per 100)   | 18.7% | --    | --    | --   | --   | --   | --   | --   | --   | --   | --   | --   | --   | --   | --   | --   | --   | --   | --   | 2018 HYS; 2017 YRBS  |
| Substance use (per 100)   | 1.8%  | --    | --    | --   | --   | --   | --   | --   | --   | --   | --   | --   | --   | --   | --   | --   | --   | --   | --   | HP 2020 6% (Goal); 12-17   |
| Substance use (per 100)   | 1.8%  | --    | --    | --   | --   | --   | --   | --   | --   | --   | --   | --   | --   | --   | --   | --   | --   | --   | --   | 2018 HYS; 2017 YRBS  |
| Substance use (per 100)   | 1.8%  | --    | --    | --   | --   | --   | --   | --   | --   | --   | --   | --   | --   | --   | --   | --   | --   | --   | --   | HP 2020 10%  |
| Substance use (per 100)   | 1.8%  | --    | --    | --   | --   | --   | --   | --   | --   | --   | --   | --   | --   | --   | --   | --   | --   | --   | --   | 2018 HYS; 2017 YRBS  |
| Substance use (per 100)   | 1.8%  | --    | --    | --   | --   | --   | --   | --   | --   | --   | --   | --   | --   | --   | --   | --   | --   | --   | --   | HP 2020 4%   |

**Snohomish County, WA COMMUNITY HEALTH ASSESSMENT 2018**

Published December 2019

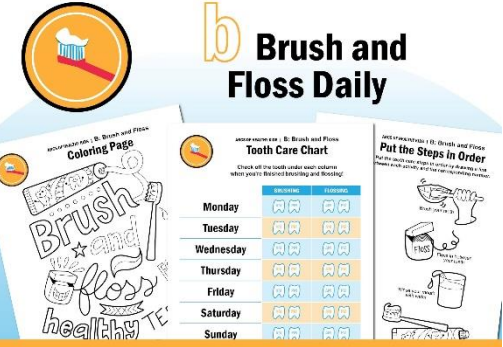
**Ways to Get  
INVOLVED**

# Introducing the ABCs for Healthy Kids Campaign

## ABCs FOR HEALTHY KIDS



## ABCs FOR HEALTHY KIDS



DOWNLOAD ACTIVITIES AT [www.snohd.org/activities](http://www.snohd.org/activities)

| DATE   |   | TOPIC                             |
|--------|---|-----------------------------------|
| Jan 3  | A | Annual Well Child Checks          |
| Jan 17 | B | Brush & Floss Daily               |
| Jan 31 | C | Covid & Flu Vaccines              |
| Feb 14 | D | Drink More Water                  |
| Feb 28 | E | Eat Fruits and Vegetables         |
| Mar 14 | F | Focus on Physical & Mental Health |
| Mar 28 | G | Get Babies to Sleep Safely        |
| Apr 11 | H | Have a Plan                       |
| Apr 25 | I | Inspect Living Spaces             |
| May 9  | J | Just Breathe                      |
| May 23 | K | Keep Things Locked Up             |
| Jun 6  | L | Learn to Swim                     |
| Jun 20 | M | Move Your Body                    |

| DATE   |   | TOPIC                        |
|--------|---|------------------------------|
| Jul 4  | N | No Sunburns Allowed          |
| Jul 18 | O | Open to New Things           |
| Aug 1  | P | Prepare for Takeoff          |
| Aug 15 | Q | Questions are Healthy        |
| Aug 29 | R | Ready for School             |
| Sep 12 | S | Social Media Smart           |
| Sep 26 | T | Tough Conversations          |
| Oct 10 | U | Under Pressure               |
| Oct 24 | V | Vaccinate                    |
| Nov 7  | W | Wash Your Hands              |
| Nov 21 | X | X-Ray Vision                 |
| Dec 5  | Y | You Are Important            |
| Dec 20 | Z | Zzzzz - Healthy Sleep Habits |



# Thank you

## **contact information**

For more info, please contact:

**Shawn Frederick, MBA**

**Administrative Officer**

425.339.8687

SFrederick@snohd.org