

CITY OF MARYSVILLE AGENDA BILL

EXECUTIVE SUMMARY FOR ACTION

CITY COUNCIL MEETING DATE: 1/24/2022

AGENDA ITEM:	
Furniture Purchase Authorization	
PREPARED BY:	DIRECTOR APPROVAL:
Sandy Langdon, Finance Director	
DEPARTMENT:	
Finance	
ATTACHMENTS:	
Furniture Quote	
BUDGET CODE:	AMOUNT:
31400018.535000	\$350,000
SUMMARY:	

Requesting authorization to purchase furniture for the Tower of the Marysville Civic Center from the federal purchasing contract at approximately 85% discount. The quote includes parts for desks, conference tables, and panel partitions to furnish all four floors.

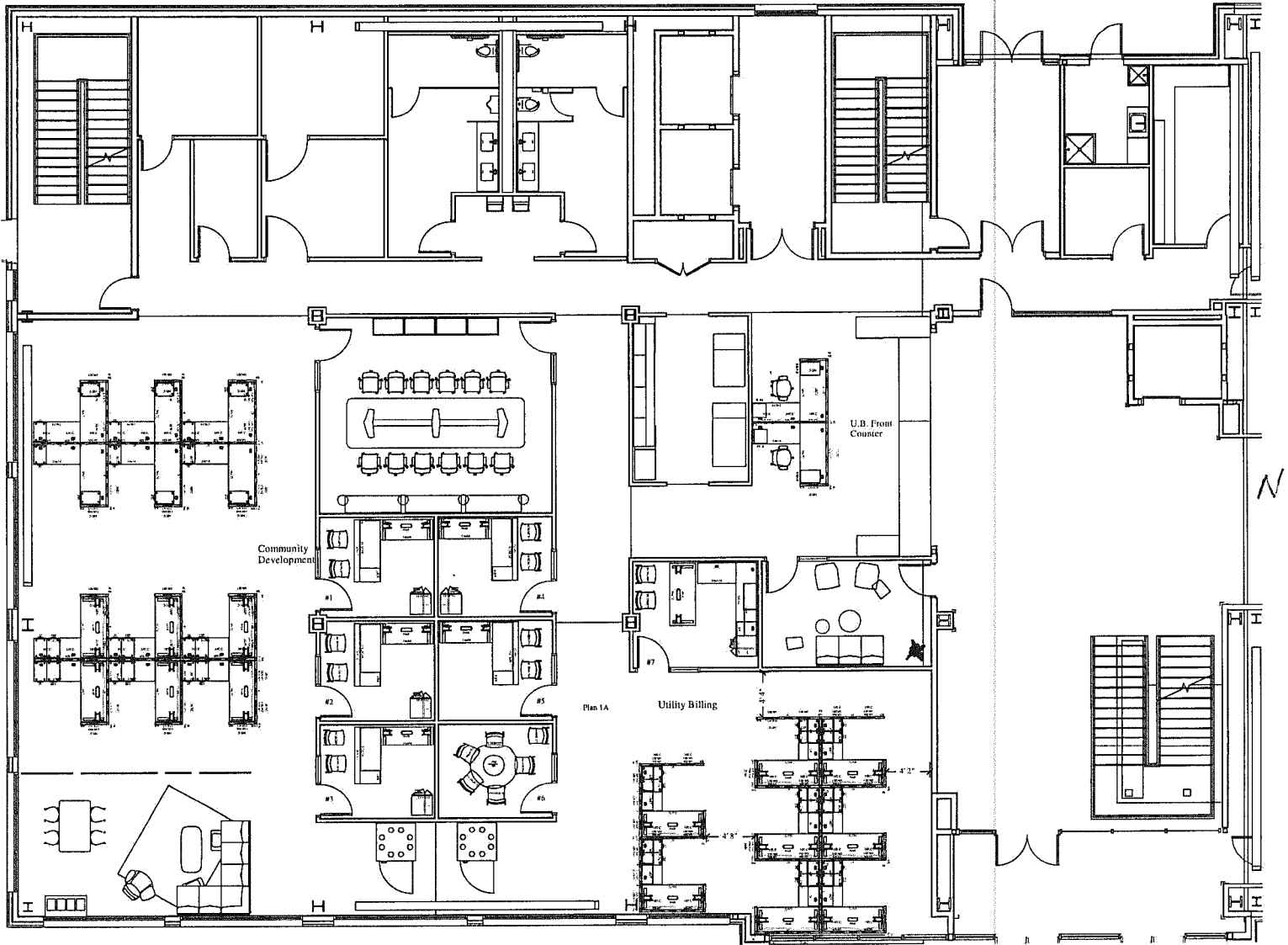
In order to guarantee the 85% discount the order needs to be placed by 1/31/2022.

Approximate delivery is four to five months from order date.

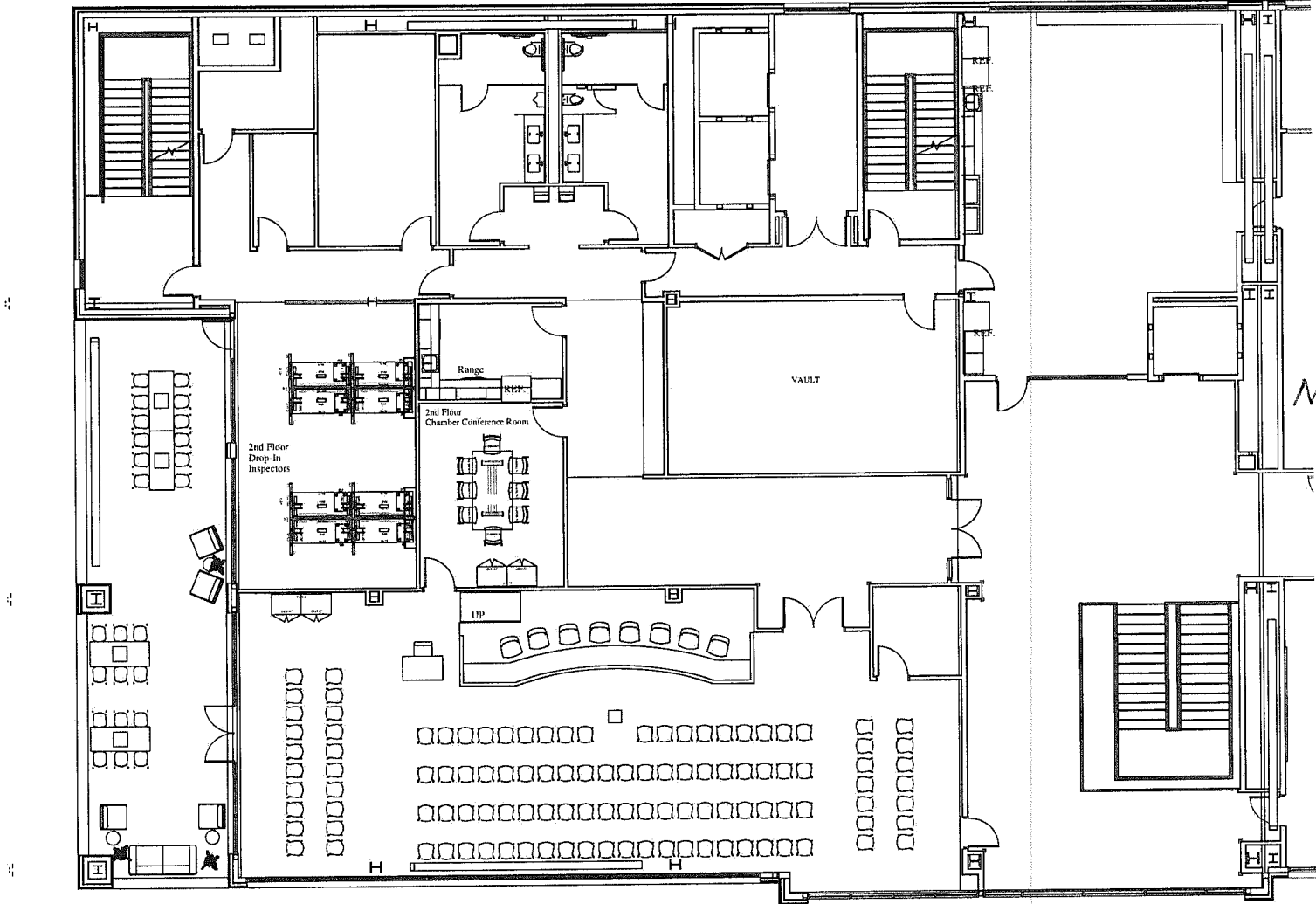
Additional detail to be included in an update on Monday.

RECOMMENDED MOTION: Authorize the purchase of furniture for the Marysville Civic Center Tower.

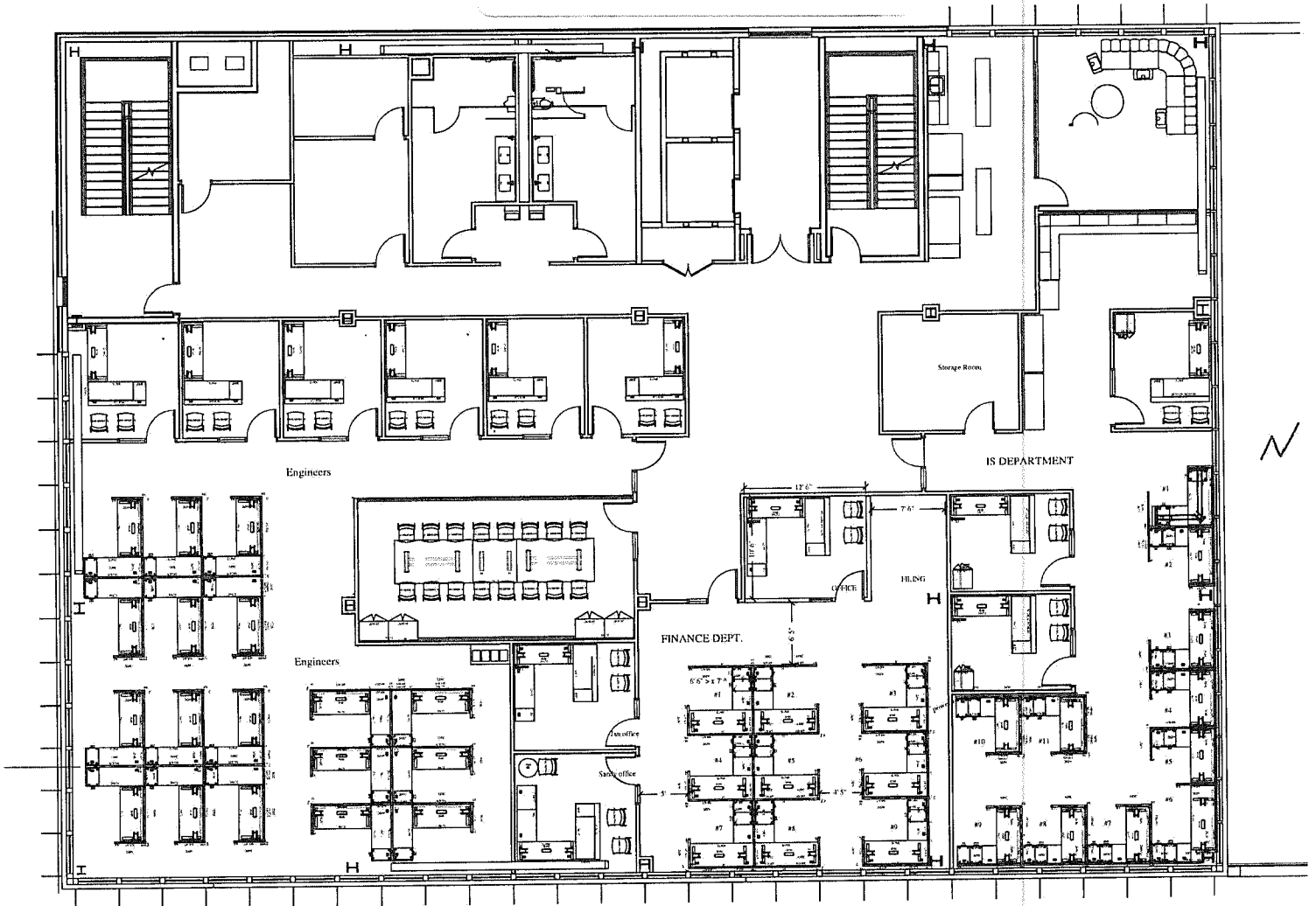
MCC
1ST FLOOR



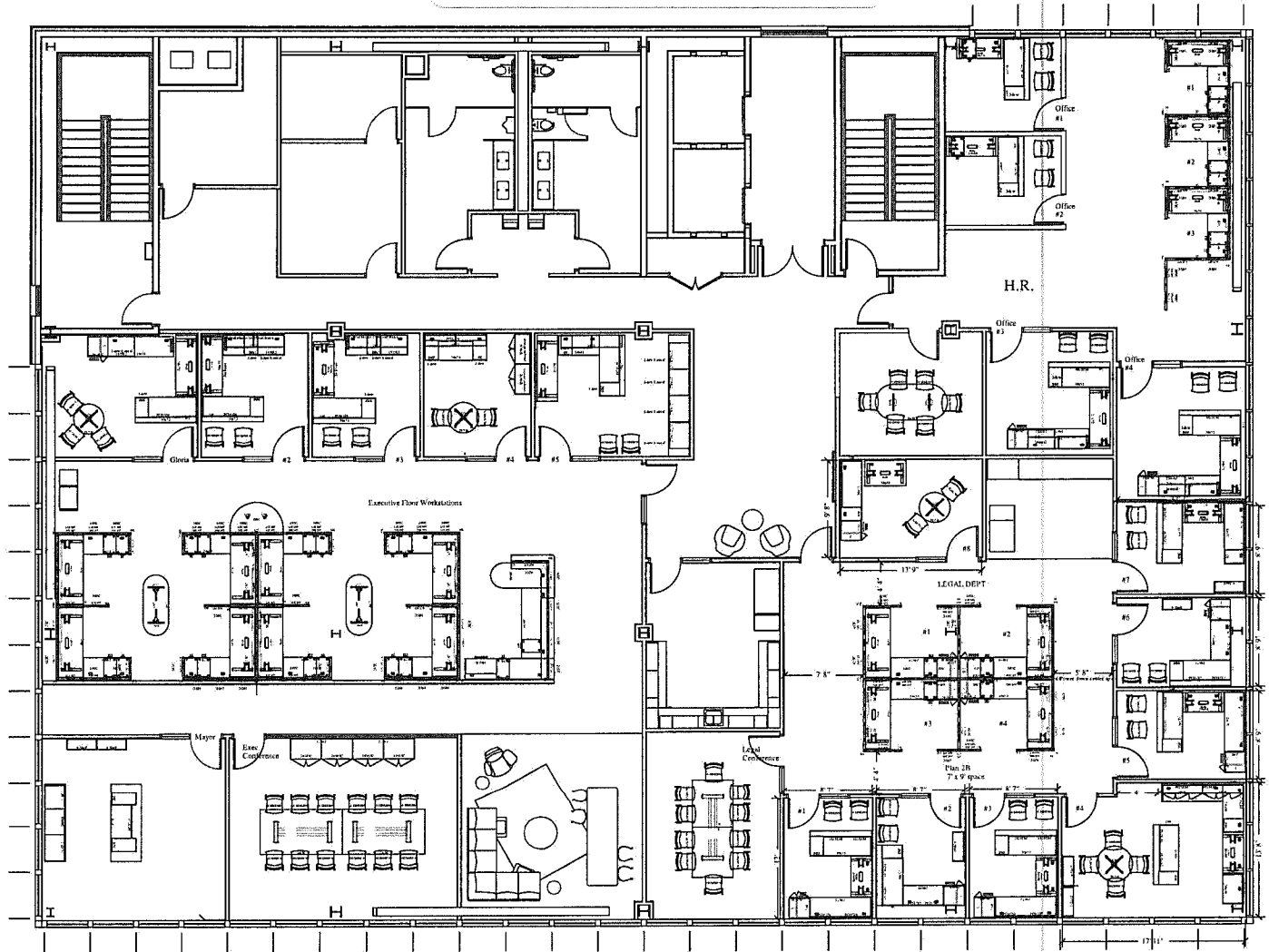
MCC
2ND FLOOR



MCC 3RD FLOOR



MCC 4TH FLOOR



Marysville Tower - 1st Fl Community Dev.

Space Planning #: MSP-20067

Date: 12/23/2021

Notes:

Spin Alabaster (base) and Spin Pool (accent) panel fabric fabrics - Harvest laminate & edgeband - Muslin paint



Position to Win.

Pricing only valid for
November 2021 Price Book
K Beeler

Line #	Part Number	Part Description	Qty	List	Ext List
1	M-C1L	Univ Cantilevered Worksurf Bracket LH	6	\$ 89.00	\$534.00
	\$(P1)	P1 Paint Opts			
	.MPT3	Muslin			
2	M-C1R	Univ Cantilevered Worksurf Bracket RH	6	\$ 89.00	\$534.00
	\$(P1)	P1 Paint Opts			
	.MPT3	Muslin			
3	M-CWB2	S1K Cantilever W/S Bracket Kit (2 pack)	8	\$ 43.00	\$344.00
	\$(P1)	P1 Paint Opts			
	.MPT3	Muslin			
4	M-ED1	Duplex Outlet Circuit #1	12	\$ 71.00	\$852.00
	.EU	Muslin			
5	M-ED4	Duplex Outlet Circuit #4 - Isolated/Dedicated	12	\$ 71.00	\$852.00
	.EU	Muslin			
6	M-EH24	Standard Single Block Duplex Harness 24W	8	\$ 300.00	\$2,400.00
7	M-EH30	Standard Double Block Duplex Harness 30W	6	\$ 332.00	\$1,992.00
8	M-EH48	Standard Double Block Duplex Harness 48W	2	\$ 396.00	\$792.00

Not intended for installation or construction. Dealer has ultimate responsibility for accuracy and correctness of component counts & measurements. Dealer shall verify and confirm all site dimensions and suitability of products and applications consistent with published guidelines and applicable codes. All plans, drawings and specifications are property of Maxon Furniture, Inc. and may not be reproduced without written consent.

MSP-20067 Marysville Tower - 1st Fl Community Dev.



Page 1 of 7

Line #	Part Number	Part Description	Qty	List	Ext List
9	M-EP30	Pass-Thru Harness 30W	6	\$ 231.00	\$1,386.00
10	M-EPF2	Power In-Feed through Side Receptacle	2	\$ 442.00	\$884.00
11	M-HALRETL	HAT to Panel Bracket T-leg LH	6	\$ 222.00	\$1,332.00
	\$(P1)	P1 Paint Opts			
	.MPT3	Muslin			
12	M-HALRETR	HAT to Panel Bracket T-leg RH	6	\$ 222.00	\$1,332.00
	\$(P1)	P1 Paint Opts			
	.MPT3	Muslin			
13	M-HAREC3S2LTF	MXitUP 3 Stage 2 Leg Rectangle T Foot	12	\$ 2,347.00	\$28,164.00
	\$(P1)	P1 Paint Opts			
	.MPT3	CLR: Muslin			
	.X	Standard Glide			
	.MEM	Memory Preset			
14	M-ICPSP281524BBFM	28Hx15Wx24D Support Ped Plinth Mtl Front BBF	12	\$ 1,182.00	\$14,184.00
	.BX	Recessed Plinth			
	.R	Recessed			
	\$(P1)	P1 Paint Opts			
	.MPT3	Muslin			
	\$(P1)	P1 Paint Opts			
	.NA	Match Case			
	.L	Standard Lock			
15	M-ICPSP281524FFM	28Hx15Wx24D Support Ped Plinth Mtl Front FF	12	\$ 1,182.00	\$14,184.00

Not intended for installation or construction. Dealer has ultimate responsibility for accuracy and correctness of component counts & measurements. Dealer shall verify and confirm all site dimensions and suitability of products and applications consistent with published guidelines and applicable codes. All plans, drawings and specifications are property of Maxon Furniture, Inc. and may not be reproduced without written consent.



MSP-20067 Marysville Tower - 1st Fl Community Dev.

Page 2 of 7

Line #	Part Number	Part Description	Qty	List	Ext List
	.BX	Recessed Plinth			
	.R	Recessed			
	\$(P1)	P1 Paint Opts			
	.MPT3	Muslin			
	\$(P1)	P1 Paint Opts			
	.NA	Match Case			
	.L	Standard Lock			
16	M-MXHAW3072S	MXitUP HA REC Worksurface w Stiffener 30Dx72W	12	\$ 830.00	\$9,960.00
	\$(L1STD)	Grd L1 Standard Laminate			
	.C	Harvest			
	.C	Harvest			
	.G	Grommet			
17	M-PFC65PLN	65H "L" Connector Post	12	\$ 222.00	\$2,664.00
	\$(P1)	P1 Paint Opts			
	.MPT3	Muslin			
18	M-PFC65PTN	65H "T" Connector Post	4	\$ 215.00	\$860.00
	\$(P1)	P1 Paint Opts			
	.MPT3	Muslin			
19	M-PFC65PXN	65H "X" Connector Post	4	\$ 208.00	\$832.00
	\$(P1)	P1 Paint Opts			
	.MPT3	Muslin			
20	M-PFCSL	"L" Connector Strap	12	\$ 28.00	\$336.00
21	M-PFCST	"T" Connector Strap	4	\$ 34.00	\$136.00

Not intended for installation or construction. Dealer has ultimate responsibility for accuracy and correctness of component counts & measurements. Dealer shall verify and confirm all site dimensions and suitability of products and applications consistent with published guidelines and applicable codes. All plans, drawings and specifications are property of Maxon Furniture, Inc. and may not be reproduced without written consent.

MSP-20067 Marysville Tower - 1st Fl Community Dev.



Line #	Part Number	Part Description	Qty	List	Ext List
22	M-PFCSX	"X" Connector Strap	4	\$ 41.00	\$164.00
23	M-PFXC-22HLS	Prefix In-Line Variable Height Finishing Kit 22.5H	4	\$ 132.00	\$528.00
	\$(P1)	P1 Paint Opts			
	.MPT3	Muslin			
24	M-PFXC-42E	Prefix Panel End Covers 42.5H	4	\$ 113.00	\$452.00
	\$(P1)	P1 Paint Opts			
	.MPT3	Muslin			
25	M-PFXC-65E	Prefix Panel End Covers 65H	12	\$ 131.00	\$1,572.00
	\$(P1)	P1 Paint Opts			
	.MPT3	Muslin			
26	M-PFXC-S	Prefix Straight Connector Kit	24	\$ 17.00	\$408.00
27	M-PFXM-4248FP	Prefix Tackable Panel 42.5H x 48W No TC	4	\$ 801.00	\$3,204.00
	\$(B)	Grd B Fab			
	.SPIN	Fabr: Spin			
	02	Alabaster			
	\$(P1)	P1 Paint Opts			
	.MPT3	Muslin			
28	M-PFXM-5036FP	Prefix Tackable Panel 50H x 36W No TC	8	\$ 871.00	\$6,968.00
	\$(B)	Grd B Fab			
	.SPIN	Fabr: Spin			
	02	Alabaster			
	\$(P1)	P1 Paint Opts			

Not intended for installation or construction. Dealer has ultimate responsibility for accuracy and correctness of component counts & measurements. Dealer shall verify and confirm all site dimensions and suitability of products and applications consistent with published guidelines and applicable codes. All plans, drawings and specifications are property of Maxon Furniture, Inc. and may not be reproduced without written consent.



Line #	Part Number	Part Description	Qty	List	Ext List
	.MPT3	Muslin			
29	M-PFXM-6524FP	Prefix Tackable Panel 65H x 24W No TC	10	\$ 813.00	\$8,130.00
	\$(B)	Grd B Fab			
	.SPIN	Fabr: Spin			
	02	Alabaster			
	\$(P1)	P1 Paint Opts			
	.MPT3	Muslin			
30	M-PFXM-6530FP	Prefix Tackable Panel 65H x 30W No TC	12	\$ 859.00	\$10,308.00
	\$(B)	Grd B Fab			
	.SPIN	Fabr: Spin			
	02	Alabaster			
	\$(P1)	P1 Paint Opts			
	.MPT3	Muslin			
31	M-PFXM-6536FP	Prefix Tackable Panel 65H x 36W No TC	16	\$ 920.00	\$14,720.00
	\$(B)	Grd B Fab			
	.SPIN	Fabr: Spin			
	02	Alabaster			
	\$(P1)	P1 Paint Opts			
	.MPT3	Muslin			
32	M-PFXM-6548FP	Prefix Tackable Panel 65H x 48W No TC	12	\$ 1,010.00	\$12,120.00
	\$(B)	Grd B Fab			
	.SPIN	Fabr: Spin			
	02	Alabaster			
	\$(P1)	P1 Paint Opts			

Not intended for installation or construction. Dealer has ultimate responsibility for accuracy and correctness of component counts & measurements. Dealer shall verify and confirm all site dimensions and suitability of products and applications consistent with published guidelines and applicable codes. All plans, drawings and specifications are property of Maxon Furniture, Inc. and may not be reproduced without written consent.

MSP-20067 Marysville Tower - 1st Fl Community Dev.



Line #	Part Number	Part Description	Qty	List	Ext List
	.MPT3	Muslin			
33	M-PFXS-1536F	Prefix Fabric Stacker 15H x 36W	8	\$ 658.00	\$5,264.00
	\$(B)	Grd B Fab			
	.SPIN	Fabr: Spin			
	11	Pool			
34	M-PFXT24	Prefix Panel Top Cap 24"W	10	\$ 57.00	\$570.00
	\$(P1)	P1 Paint Opts			
	.MPT3	Muslin			
35	M-PFXT30	Prefix Panel Top Cap 30"W	12	\$ 71.00	\$852.00
	\$(P1)	P1 Paint Opts			
	.MPT3	Muslin			
36	M-PFXT36	Prefix Panel Top Cap 36"W	24	\$ 93.00	\$2,232.00
	\$(P1)	P1 Paint Opts			
	.MPT3	Muslin			
37	M-PFXT48	Prefix Panel Top Cap 48"W	16	\$ 118.00	\$1,888.00
	\$(P1)	P1 Paint Opts			
	.MPT3	Muslin			
38	M-UOSS24	Univ Open Straight Shelf 24W	12	\$ 382.00	\$4,584.00
	\$(P1)	P1 Paint Opts			
	.MPT3	Muslin			
39	M-URW2454	Univ Rec WS 24 x 54	12	\$ 552.00	\$6,624.00
	\$(L1STD)	L1 Standard Lam Opts			

Not intended for installation or construction. Dealer has ultimate responsibility for accuracy and correctness of component counts & measurements. Dealer shall verify and confirm all site dimensions and suitability of products and applications consistent with published guidelines and applicable codes. All plans, drawings and specifications are property of Maxon Furniture, Inc. and may not be reproduced without written consent.



MSP-20067 Marysville Tower - 1st Fl Community Dev.

Page 6 of 7

Line #	Part Number	Part Description	Qty	List	Ext List
	.C	Harvest			
	.C	Harvest			
40	M-USOH1530F	Univ OH Cab 15Hx30W Flipper Pnt Door	12	\$ 792.00	\$9,504.00
	\$(P1)	P1 Paint Opts			
	.MPT3	Muslin			
Group Total List:					<u>\$174,646.00</u>
Ext. Volume:	698.92			Project Total List:	<u>\$174,646.00</u>
Ext. Weight:	7,586.08				

Not intended for installation or construction. Dealer has ultimate responsibility for accuracy and correctness of component counts & measurements. Dealer shall verify and confirm all site dimensions and suitability of products and applications consistent with published guidelines and applicable codes. All plans, drawings and specifications are property of Maxon Furniture, Inc. and may not be reproduced without written consent.

MSP-20067 Marysville Tower - 1st Fl Community Dev.



Marysville - 2nd Fl Inspectors & Chamber Room

Space Planning #: MSP-20072

Date: 12/29/2021

Notes:

Spin Alabaster and Mica Bronze (accent) panel fabrics - Harvest laminate & edgeband - Muslin paint - Clear glass



Position to Win.

Pricing only valid for
November 2021 Price Book
K Beeler

Line #	Part Number	Part Description	Qty	List	Ext List
2nd Fl Inspectors					
1	M-EH36	Standard Double Block Duplex Harness 36W	8	\$ 365.00	\$2,920.00
2	M-EPF2	Power In-Feed through Side Receptacle	2	\$ 442.00	\$884.00
3	M-PFCST	"T" Connector Strap	2	\$ 34.00	\$68.00
4	M-PFCSX	"X" Connector Strap	2	\$ 41.00	\$82.00
5	M-PFXC-S	Prefix Straight Connector Kit	4	\$ 17.00	\$68.00
6	M-ED1	Duplex Outlet Circuit #1	8	\$ 71.00	\$568.00
	.EU	Muslin			
7	M-ED4	Duplex Outlet Circuit #4 - Isolated/Dedicated	8	\$ 71.00	\$568.00
	.EU	Muslin			
8	M-HALRETL	HAT to Panel Bracket T-leg LH	4	\$ 222.00	\$888.00
	\$(P1)	P1 Paint Opts			
	.MPT3	Muslin			
9	M-HALRETR	HAT to Panel Bracket T-leg RH	4	\$ 222.00	\$888.00
	\$(P1)	P1 Paint Opts			

Not intended for installation or construction. Dealer has ultimate responsibility for accuracy and correctness of component counts & measurements. Dealer shall verify and confirm all site dimensions and suitability of products and applications consistent with published guidelines and applicable codes. All plans, drawings and specifications are property of Maxon Furniture, Inc. and may not be reproduced without written consent.

MSP-20072 Marysville - 2nd Fl Inspectors & Chamber Room



Line #	Part Number	Part Description	Qty	List	Ext List
	.MPT3	Muslin			
10	M-PFC65PTN	65H "T" Connector Post	2	\$ 215.00	\$430.00
	\$(P1)	P1 Paint Opts			
	.MPT3	Muslin			
11	M-PFC65PXN	65H "X" Connector Post	2	\$ 208.00	\$416.00
	\$(P1)	P1 Paint Opts			
	.MPT3	Muslin			
12	M-PFXC-65E	Prefix Panel End Covers 65H	8	\$ 131.00	\$1,048.00
	\$(P1)	P1 Paint Opts			
	.MPT3	Muslin			
13	M-PFXC-65W	Wall Starter Kit for Panels 65H	2	\$ 309.00	\$618.00
	\$(P1)	P1 Paint Opts			
	.MPT3	Muslin			
14	M-PFXTC36	Prefix Panel Top Cap 36"W	8	\$ 93.00	\$744.00
	\$(P1)	P1 Paint Opts			
	.MPT3	Muslin			
15	M-PFXTC42	Prefix Panel Top Cap 42"W	8	\$ 108.00	\$864.00
	\$(P1)	P1 Paint Opts			
	.MPT3	Muslin			
16	M-UWMSOH1536F	Univ Wall MT OH Cab 15Hx36W Flipper Pnt Door	4	\$ 838.00	\$3,352.00
	\$(P1)	P1 Paint Opts			
	.MPT3	Muslin			

Not intended for installation or construction. Dealer has ultimate responsibility for accuracy and correctness of component counts & measurements. Dealer shall verify and confirm all site dimensions and suitability of products and applications consistent with published guidelines and applicable codes. All plans, drawings and specifications are property of Maxon Furniture, Inc. and may not be reproduced without written consent.



Line #	Part Number	Part Description	Qty	List	Ext List
17	M-PFXS-1542G	Prefix Glass Stacker 15H x 42W	4	\$ 899.00	\$3,596.00
	\$(P1)	P1 Paint Opts			
	.MPT3	Muslin			
	.C	Clear			
18	M-HAREC3S2LTF	MXitUP 3 Stage 2 Leg Rectangle T Foot	8	\$ 2,347.00	\$18,776.00
	\$(P1)	P1 Paint Opts			
	.MPT3	CLR: Muslin			
	.X	Standard Glide			
	.MEM	Memory Preset			
19	M-MXHAW3072S	MXitUP HA REC Worksurface w Stiffener 30Dx72W	8	\$ 830.00	\$6,640.00
	\$(L1STD)	Grd L1 Standard Laminate			
	.C	Harvest			
	.C	Harvest			
	.G	Grommet			
20	M-PFXM-5042FP	Prefix Tackable Panel 50H x 42W No TC	2	\$ 922.00	\$1,844.00
	\$(B)	Grd B Fab			
	.MCA	Fabr: Mica			
	13	Clr: Bronze			
	\$(P1)	P1 Paint Opts			
	.MPT3	Muslin			
21	M-PFXM-5042FP	Prefix Tackable Panel 50H x 42W No TC	2	\$ 922.00	\$1,844.00
	\$(B)	Grd B Fab			
	.SPIN	Fabr: Spin			
	02	Alabaster			

Not intended for installation or construction. Dealer has ultimate responsibility for accuracy and correctness of component counts & measurements. Dealer shall verify and confirm all site dimensions and suitability of products and applications consistent with published guidelines and applicable codes. All plans, drawings and specifications are property of Maxon Furniture, Inc. and may not be reproduced without written consent.

MSP-20072 Marysville - 2nd Fl Inspectors & Chamber Room



Line #	Part Number	Part Description	Qty	List	Ext List
	\$(P1)	P1 Paint Opts			
	.MPT3	Muslin			
22	M-PFXM-6536FP	Prefix Tackable Panel 65H x 36W No TC	8	\$ 920.00	\$7,360.00
	\$(B)	Grd B Fab			
	.SPIN	Fabr: Spin			
	02	Alabaster			
	\$(P1)	P1 Paint Opts			
	.MPT3	Muslin			
23	M-PFXM-6542FP	Prefix Tackable Panel 65H x 42W No TC	4	\$ 956.00	\$3,824.00
	\$(B)	Grd B Fab			
	.SPIN	Fabr: Spin			
	02	Alabaster			
	\$(P1)	P1 Paint Opts			
	.MPT3	Muslin			
24	M-ICPM211524BFM	21Hx15Wx24D Mob Ped Mtl Front BF	8	\$ 1,062.00	\$8,496.00
	.R	Recessed			
	\$(P1)	P1 Paint Opts			
	.MPT3	Muslin			
	\$(P1)	P1 Paint Opts			
	.NA	Match Case			
	.L	Standard Lock			
Group Total List:					<u>\$66,786.00</u>

Chamber Room

Not intended for installation or construction. Dealer has ultimate responsibility for accuracy and correctness of component counts & measurements. Dealer shall verify and confirm all site dimensions and suitability of products and applications consistent with published guidelines and applicable codes. All plans, drawings and specifications are property of Maxon Furniture, Inc. and may not be reproduced without written consent.



Line #	Part Number	Part Description	Qty	List	Ext List
25	M-URW2466N	Univ Rec WS 24 x 66 No Grommets	1	\$ 632.00	\$632.00
	\$(L1STD)	L1 Standard Lam Opts			
	.C	Harvest			
	.C	Harvest			
26	M-DXLSC36	DeXTR high storage cab: 24x36x29.5	2	\$ 1,963.00	\$3,926.00
	\$(L1STD)	Grd L1 Standard Laminates			
	.C	Harvest			
	\$(L1STD)	Grd L1 Standard Laminates			
	.C	Harvest			
	~	Undecided PULL Option			
				Group Total List:	\$4,558.00
Ext. Volume:	256.60			Project Total List:	\$71,344.00
Ext. Weight:	2,992.94				

Not intended for installation or construction. Dealer has ultimate responsibility for accuracy and correctness of component counts & measurements. Dealer shall verify and confirm all site dimensions and suitability of products and applications consistent with published guidelines and applicable codes. All plans, drawings and specifications are property of Maxon Furniture, Inc. and may not be reproduced without written consent.

MSP-20072 Marysville - 2nd Fl Inspectors & Chamber Room



Marysville - 3rd Floor Engineer Offices

Space Planning #: MSP-20121

Date: 1/12/2022

Notes:

Harvest laminate - Harvest edgeband - Muslin paint (height adj base) - Champagne Metallic paint (DeXTR drawer pulls)

maxon[®]
Your Project is Our Purpose

Pricing only valid for
November 2021 Price Book
K Beeler

Line #	Part Number	Part Description	Qty	List	Ext List
1	M-DXL2428BBF	DeXTR 24"D x 28" Box/Box/File Pedestal Support	6	\$ 1,318.00	\$7,908.00
	\$(L1STD)	Grd L1 Standard Laminates			
	.C	Harvest			
	\$(L1STD)	Grd L1 Standard Laminates			
	.C	Harvest			
	.MPR5	Champagne Metallic			
2	M-DXLEP24	DeXTR 24"D x 28" End Panel Support	5	\$ 458.00	\$2,290.00
	\$(L1STD)	Grd L1 Standard Laminates			
	.C	Harvest			
3	M-DXLEP24	DeXTR 24"D x 28" End Panel Support	1	\$ 458.00	\$458.00
	\$(L1STD)	Grd L1 Standard Laminates			
	.C	Harvest			
4	M-DXLMP4028FP	DeXTR 40"W x 28"H Full Length Lam Modesty Panel	6	\$ 537.00	\$3,222.00
	\$(L1STD)	Grd L1 Standard Laminates			
	.C	Harvest			
5	M-HAREC3S2LTF	MXitUP 3 Stage 2 Leg Rectangle T Foot	6	\$ 2,347.00	\$14,082.00
	\$(P1)	P1 Paint Opts			

Not intended for installation or construction. Dealer has ultimate responsibility for accuracy and correctness of component counts & measurements. Dealer shall verify and confirm all site dimensions and suitability of products and applications consistent with published guidelines and applicable codes. All plans, drawings and specifications are property of Maxon Furniture, Inc. and may not be reproduced without written consent.

MSP-20121 Marysville - 3rd Floor Engineer Offices



Page 1 of 2

Line #	Part Number	Part Description	Qty	List	Ext List
	.MPT3	CLR: Muslin			
	.X	Standard Glide			
	.MEM	Memory Preset			
6	M-MXHAW2472S	MXitUP HA REC Worksurface w Stiffener 24Dx72W	6	\$ 766.00	\$4,596.00
	\$(L1STD)	Grd L1 Standard Laminate			
	.C	Harvest			
	.C	Harvest			
	.G	Grommet			
7	M-URW3072N	Univ Rec WS 30 x 72 No Grommets	6	\$ 738.00	\$4,428.00
	\$(L1STD)	L1 Standard Lam Opts			
	.C	Harvest			
	.C	Harvest			
				Group Total List:	\$36,984.00
Ext. Volume:	172.20			Project Total List:	\$36,984.00
Ext. Weight:	2,405.10				

Not intended for installation or construction. Dealer has ultimate responsibility for accuracy and correctness of component counts & measurements. Dealer shall verify and confirm all site dimensions and suitability of products and applications consistent with published guidelines and applicable codes. All plans, drawings and specifications are property of Maxon Furniture, Inc. and may not be reproduced without written consent.



Marysville Tower - 3rd Fl Engineers

Space Planning #: MSP-19934

Date: 12/3/2021

Notes:

Spin Alabaster (base panels) & Sarto Lemongrass (accent stacker)
panel fabrics - CORE/L1 laminate - Muslin paint



Position to Win.

Pricing only valid for
November 2021 Price Book
K Beeler

Line #	Part Number	Part Description	Qty	List	Ext List
1	M-C1L	Univ Cantilevered Worksurf Bracket LH	9	\$ 89.00	\$801.00
	\$(P1)	P1 Paint Opts			
	.MPT3	Muslin			
2	M-C1R	Univ Cantilevered Worksurf Bracket RH	9	\$ 89.00	\$801.00
	\$(P1)	P1 Paint Opts			
	.MPT3	Muslin			
3	M-CWB2	S1K Cantilever W/S Bracket Kit (2 pack)	12	\$ 43.00	\$516.00
	\$(P1)	P1 Paint Opts			
	.MPT3	Muslin			
4	M-ED1	Duplex Outlet Circuit #1	18	\$ 71.00	\$1,278.00
	.EU	Muslin			
5	M-ED4	Duplex Outlet Circuit #4 - Isolated/Dedicated	18	\$ 71.00	\$1,278.00
	.EU	Muslin			
6	M-EH24	Standard Single Block Duplex Harness 24W	3	\$ 300.00	\$900.00
7	M-EH30	Standard Double Block Duplex Harness 30W	9	\$ 332.00	\$2,988.00
8	M-EH42	Standard Double Block Duplex Harness 42W	9	\$ 384.00	\$3,456.00

Not intended for installation or construction. Dealer has ultimate responsibility for accuracy and correctness of component counts & measurements. Dealer shall verify and confirm all site dimensions and suitability of products and applications consistent with published guidelines and applicable codes. All plans, drawings and specifications are property of Maxon Furniture, Inc. and may not be reproduced without written consent.

MSP-19934 Marysville Tower - 3rd Fl Engineers



Page 1 of 6

Line #	Part Number	Part Description	Qty	List	Ext List
9	M-EPF2	Power In-Feed through Side Receptacle	3	\$ 442.00	\$1,326.00
10	M-HAMREC3S2LTF	MXitUP Max 3 Stage 2 Leg T Foot	18	\$ 2,712.00	\$48,816.00
	\$(P1)	P1 Paint Opts			
	.MPT3	CLR: Muslin			
	.X	Standard Glide			
	.MEM	Memory Preset			
11	M-ICPSP281524BBFM	28Hx15Wx24D Support Ped Plinth Mtl Front BBF	18	\$ 1,160.00	\$20,880.00
	.BX	Recessed Plinth			
	.R	Recessed			
	\$(P1)	P1 Paint Opts			
	.MPT3	Muslin			
	\$(P1)	P1 Paint Opts			
	.NA	Match Case			
	.X	Omit Lock			
12	M-LC1S	Include Satin Removable Lock Core Kit	18	\$ 55.00	\$990.00
	~	Undecided KEY NUMBER Option			
13	M-MXHAW3096S	MXitUP HA REC Worksurface w Stiffener 30Dx96W	18	\$ 946.00	\$17,028.00
	\$(L1STD)	Grd L1 Standard Laminate			
	~	Undecided LAMINATE Option			
	~	Undecided EDGE Option			
	.G	Grommet			
14	M-PFC65PLN	65H "L" Connector Post	18	\$ 222.00	\$3,996.00
	\$(P1)	P1 Paint Opts			

Not intended for installation or construction. Dealer has ultimate responsibility for accuracy and correctness of component counts & measurements. Dealer shall verify and confirm all site dimensions and suitability of products and applications consistent with published guidelines and applicable codes. All plans, drawings and specifications are property of Maxon Furniture, Inc. and may not be reproduced without written consent.



Line #	Part Number	Part Description	Qty	List	Ext List
	.MPT3	Muslin			
15	M-PFC65PTN	65H "T" Connector Post	6	\$ 215.00	\$1,290.00
	\$(P1)	P1 Paint Opts			
	.MPT3	Muslin			
16	M-PFC65PXN	65H "X" Connector Post	6	\$ 208.00	\$1,248.00
	\$(P1)	P1 Paint Opts			
	.MPT3	Muslin			
17	M-PFCS1	Single Connector Strap	21	\$ 17.00	\$357.00
18	M-PFCST	"T" Connector Strap	3	\$ 34.00	\$102.00
19	M-PFCSX	"X" Connector Strap	6	\$ 41.00	\$246.00
20	M-PFXC-22HL	Prefix Variable Height Connector Kit 22.5H	18	\$ 131.00	\$2,358.00
	\$(P1)	P1 Paint Opts			
	.MPT3	Muslin			
21	M-PFXC-30HL	Prefix Variable Height Connector Kit 30H	6	\$ 155.00	\$930.00
	\$(P1)	P1 Paint Opts			
	.MPT3	Muslin			
22	M-PFXC-35E	Prefix Panel End Covers 35H	6	\$ 107.00	\$642.00
	\$(P1)	P1 Paint Opts			
	.MPT3	Muslin			
23	M-PFXC-42E	Prefix Panel End Covers 42.5H	18	\$ 113.00	\$2,034.00
	\$(P1)	P1 Paint Opts			

Not intended for installation or construction. Dealer has ultimate responsibility for accuracy and correctness of component counts & measurements. Dealer shall verify and confirm all site dimensions and suitability of products and applications consistent with published guidelines and applicable codes. All plans, drawings and specifications are property of Maxon Furniture, Inc. and may not be reproduced without written consent.

MSP-19934 Marysville Tower - 3rd Fl Engineers



Line #	Part Number	Part Description	Qty	List	Ext List
	.MPT3	Muslin			
24	M-PFXC-S	Prefix Straight Connector Kit	27	\$ 17.00	\$459.00
25	M-PFXM-3524FP	Prefix Tackable Panel 35H x 24W No TC	6	\$ 643.00	\$3,858.00
	\$(B)	Grd B Fab			
	.SPIN	Fabr: Spin			
	02	Alabaster			
	\$(P1)	P1 Paint Opts			
	.MPT3	Muslin			
26	M-PFXM-4236FP	Prefix Tackable Panel 42.5H x 36W No TC	18	\$ 754.00	\$13,572.00
	\$(B)	Grd B Fab			
	.SPIN	Fabr: Spin			
	02	Alabaster			
	\$(P1)	P1 Paint Opts			
	.MPT3	Muslin			
27	M-PFXM-5048FP	Prefix Tackable Panel 50H x 48W No TC	12	\$ 975.00	\$11,700.00
	\$(B)	Grd B Fab			
	.SPIN	Fabr: Spin			
	02	Alabaster			
	\$(P1)	P1 Paint Opts			
	.MPT3	Muslin			
28	M-PFXM-6530FP	Prefix Tackable Panel 65H x 30W No TC	9	\$ 859.00	\$7,731.00
	\$(B)	Grd B Fab			
	.SPIN	Fabr: Spin			

Not intended for installation or construction. Dealer has ultimate responsibility for accuracy and correctness of component counts & measurements. Dealer shall verify and confirm all site dimensions and suitability of products and applications consistent with published guidelines and applicable codes. All plans, drawings and specifications are property of Maxon Furniture, Inc. and may not be reproduced without written consent.



Line #	Part Number	Part Description	Qty	List	Ext List
	02	Alabaster			
	\$(P1)	P1 Paint Opts			
	.MPT3	Muslin			
29	M-PFXM-6542FP	Prefix Tackable Panel 65H x 42W No TC	9	\$ 956.00	\$8,604.00
	\$(B)	Grd B Fab			
	.SPIN	Fabr: Spin			
	02	Alabaster			
	\$(P1)	P1 Paint Opts			
	.MPT3	Muslin			
30	M-PFXM-6548FP	Prefix Tackable Panel 65H x 48W No TC	24	\$ 1,010.00	\$24,240.00
	\$(B)	Grd B Fab			
	.SPIN	Fabr: Spin			
	02	Alabaster			
	\$(P1)	P1 Paint Opts			
	.MPT3	Muslin			
31	M-PFXS-1548F	Prefix Fabric Stacker 15H x 48W	12	\$ 757.00	\$9,084.00
	\$(B)	Grd B Fab			
	.SPIN	Fabr: Spin			
	02	Alabaster			
32	M-PFXTC24	Prefix Panel Top Cap 24"W	6	\$ 57.00	\$342.00
	\$(P1)	P1 Paint Opts			
	.MPT3	Muslin			
33	M-PFXTC30	Prefix Panel Top Cap 30"W	9	\$ 71.00	\$639.00

Not intended for installation or construction. Dealer has ultimate responsibility for accuracy and correctness of component counts & measurements. Dealer shall verify and confirm all site dimensions and suitability of products and applications consistent with published guidelines and applicable codes. All plans, drawings and specifications are property of Maxon Furniture, Inc. and may not be reproduced without written consent.

MSP-19934 Marysville Tower - 3rd Fl Engineers



Line #	Part Number	Part Description	Qty	List	Ext List
	\$(P1)	P1 Paint Opts			
	.MPT3	Muslin			
34	M-PFXTC36	Prefix Panel Top Cap 36"W	18	\$ 93.00	\$1,674.00
	\$(P1)	P1 Paint Opts			
	.MPT3	Muslin			
35	M-PFXTC42	Prefix Panel Top Cap 42"W	9	\$ 108.00	\$972.00
	\$(P1)	P1 Paint Opts			
	.MPT3	Muslin			
36	M-PFXTC48	Prefix Panel Top Cap 48"W	36	\$ 118.00	\$4,248.00
	\$(P1)	P1 Paint Opts			
	.MPT3	Muslin			
37	M-URW2442	Univ Rec WS 24 x 42	18	\$ 486.00	\$8,748.00
	\$(L1STD)	L1 Standard Lam Opts			
	~	Undecided LAMINATE Option			
	~	Undecided EDGE Option			
Group Total List:					\$210,132.00
Ext. Volume:	784.50	Project Total List:			\$210,132.00
Ext. Weight:	9,317.76				

Not intended for installation or construction. Dealer has ultimate responsibility for accuracy and correctness of component counts & measurements. Dealer shall verify and confirm all site dimensions and suitability of products and applications consistent with published guidelines and applicable codes. All plans, drawings and specifications are property of Maxon Furniture, Inc. and may not be reproduced without written consent.



Marysville - 3rd Floor IS Department

Space Planning #: MSP-20093

Date: 1/6/2022

Notes:

Spin Alabaster panel fabric - Harvest laminate & edgeband -
Muslin paint - Clear glass



Pricing only valid for
November 2021 Price Book
K Beeler

Line #	Part Number	Part Description	Qty	List	Ext List
1	M-C1L	Univ Cantilevered Worksurf Bracket LH	3	\$ 89.00	\$267.00
	\$(P1)	P1 Paint Opts			
	.MPT3	Muslin			
2	M-C1R	Univ Cantilevered Worksurf Bracket RH	6	\$ 89.00	\$534.00
	\$(P1)	P1 Paint Opts			
	.MPT3	Muslin			
3	M-CWB2	S1K Cantilever W/S Bracket Kit (2 pack)	6	\$ 43.00	\$258.00
	\$(P1)	P1 Paint Opts			
	.MPT3	Muslin			
4	M-ED1	Duplex Outlet Circuit #1	11	\$ 71.00	\$781.00
	.EU	Muslin			
5	M-ED4	Duplex Outlet Circuit #4 - Isolated/Dedicated	11	\$ 71.00	\$781.00
	.EU	Muslin			
6	M-EH24	Standard Single Block Duplex Harness 24W	1	\$ 300.00	\$300.00
7	M-EH30	Standard Double Block Duplex Harness 30W	6	\$ 332.00	\$1,992.00
8	M-EH36	Standard Double Block Duplex Harness 36W	10	\$ 365.00	\$3,650.00

Not intended for installation or construction. Dealer has ultimate responsibility for accuracy and correctness of component counts & measurements. Dealer shall verify and confirm all site dimensions and suitability of products and applications consistent with published guidelines and applicable codes. All plans, drawings and specifications are property of Maxon Furniture, Inc. and may not be reproduced without written consent.

MSP-20093 Marysville - 3rd Floor IS Department



Line #	Part Number	Part Description	Qty	List	Ext List
9	M-EH42	Standard Double Block Duplex Harness 42W	2	\$ 384.00	\$768.00
10	M-EH48	Standard Double Block Duplex Harness 48W	5	\$ 396.00	\$1,980.00
11	M-EPF2	Power In-Feed through Side Receptacle	4	\$ 442.00	\$1,768.00
12	M-FB24	Worksurface Flat Bracket 24L Charcoal	1	\$ 80.00	\$80.00
13	M-HALRETL	HAT to Panel Bracket T-leg LH	4	\$ 222.00	\$888.00
	\$(P1)	P1 Paint Opts			
	.MPT3	Muslin			
14	M-HALRETR	HAT to Panel Bracket T-leg RH	6	\$ 222.00	\$1,332.00
	\$(P1)	P1 Paint Opts			
	.MPT3	Muslin			
15	M-HAMREC3S2LTF	MXitUP Max 3 Stage 2 Leg T Foot	1	\$ 2,712.00	\$2,712.00
	\$(P1)	P1 Paint Opts			
	.MPT3	CLR: Muslin			
	.X	Standard Glide			
	.MEM	Memory Preset			
16	M-HAREC3S2LTF	MXitUP 3 Stage 2 Leg Rectangle T Foot	9	\$ 2,347.00	\$21,123.00
	\$(P1)	P1 Paint Opts			
	.MPT3	CLR: Muslin			
	.X	Standard Glide			
	.MEM	Memory Preset			
17	M-HAREC3S3LTF	MXitUP 3 Stage 3 Leg Rectangle T Foot	1	\$ 3,873.00	\$3,873.00

Not intended for installation or construction. Dealer has ultimate responsibility for accuracy and correctness of component counts & measurements. Dealer shall verify and confirm all site dimensions and suitability of products and applications consistent with published guidelines and applicable codes. All plans, drawings and specifications are property of Maxon Furniture, Inc. and may not be reproduced without written consent.



Line #	Part Number	Part Description	Qty	List	Ext List
	\$(P1)	P1 Paint Opts			
	.MPT3	CLR: Muslin			
	.X	Standard Glide			
	.MEM	Memory Preset			
18	M-ICPM271524BBFM	27Hx15Wx18D Mob Ped Mtl Front FF	1	\$ 1,349.00	\$1,349.00
	.R	Recessed			
	\$(P1)	P1 Paint Opts			
	.MPT3	Muslin			
	\$(P1)	P1 Paint Opts			
	.NA	Match Case			
	.L	Standard Lock			
19	M-ICPM271524FFM	27Hx15Wx24D Mob Ped Mtl Front FF	1	\$ 1,349.00	\$1,349.00
	.R	Recessed			
	\$(P1)	P1 Paint Opts			
	.MPT3	Muslin			
	\$(P1)	P1 Paint Opts			
	.NA	Match Case			
	.L	Standard Lock			
20	M-ICPSP281524BBFM	28Hx15Wx24D Support Ped Plinth Mtl Front BBF	10	\$ 1,182.00	\$11,820.00
	.BX	Recessed Plinth			
	.R	Recessed			
	\$(P1)	P1 Paint Opts			
	.MPT3	Muslin			
	\$(P1)	P1 Paint Opts			

Not intended for installation or construction. Dealer has ultimate responsibility for accuracy and correctness of component counts & measurements. Dealer shall verify and confirm all site dimensions and suitability of products and applications consistent with published guidelines and applicable codes. All plans, drawings and specifications are property of Maxon Furniture, Inc. and may not be reproduced without written consent.

MSP-20093 Marysville - 3rd Floor IS Department



Line #	Part Number	Part Description	Qty	List	Ext List
	.NA	Match Case			
	.L	Standard Lock			
21	M-ICPSP281524FFM	28Hx15Wx24D Support Ped Plinth Mtl Front FF	10	\$ 1,182.00	\$11,820.00
	.BX	Recessed Plinth			
	.R	Recessed			
	\$(P1)	P1 Paint Opts			
	.MPT3	Muslin			
	\$(P1)	P1 Paint Opts			
	.NA	Match Case			
	.L	Standard Lock			
22	M-MDSL29	Universal Shared C-Leg	1	\$ 421.00	\$421.00
	\$(P1)	P1 Paint Opts			
	.MPT3	Muslin			
23	M-MXHAW3072S	MXitUP HA REC Worksurface w Stiffener 30Dx72W	10	\$ 830.00	\$8,300.00
	\$(L1STD)	Grd L1 Standard Laminate			
	.C	Harvest			
	.C	Harvest			
	.G	Grommet			
24	M-MXHAW3084S	MXitUP HA REC Worksurface w Stiffener 30Dx84W	1	\$ 884.00	\$884.00
	\$(L1STD)	Grd L1 Standard Laminate			
	.C	Harvest			
	.C	Harvest			
	.G	Grommet			

Not intended for installation or construction. Dealer has ultimate responsibility for accuracy and correctness of component counts & measurements. Dealer shall verify and confirm all site dimensions and suitability of products and applications consistent with published guidelines and applicable codes. All plans, drawings and specifications are property of Maxon Furniture, Inc. and may not be reproduced without written consent.



Line #	Part Number	Part Description	Qty	List	Ext List
25	M-PFC42PLN	42.5H "L" Connector Post	3	\$ 178.00	\$534.00
	\$(P1)	P1 Paint Opts			
	.MPT3	Muslin			
26	M-PFC50PTN	50H "T" Connector Post	1	\$ 185.00	\$185.00
	\$(P1)	P1 Paint Opts			
	.MPT3	Muslin			
27	M-PFC65PLN	65H "L" Connector Post	10	\$ 222.00	\$2,220.00
	\$(P1)	P1 Paint Opts			
	.MPT3	Muslin			
28	M-PFC65PTN	65H "T" Connector Post	8	\$ 215.00	\$1,720.00
	\$(P1)	P1 Paint Opts			
	.MPT3	Muslin			
29	M-PFCS1	Single Connector Strap	19	\$ 17.00	\$323.00
30	M-PFCSL	"L" Connector Strap	3	\$ 28.00	\$84.00
31	M-PFXC-07HL	Prefix Variable Height Connector Kit 7.5H	12	\$ 107.00	\$1,284.00
	\$(P1)	P1 Paint Opts			
	.MPT3	Muslin			
32	M-PFXC-07HLS	Prefix In-Line Variable Height Finishing Kit 7.5H	1	\$ 107.00	\$107.00
	\$(P1)	P1 Paint Opts			
	.MPT3	Muslin			
33	M-PFXC-15HL	Prefix Variable Height Connector Kit 15H	1	\$ 113.00	\$113.00
	\$(P1)	P1 Paint Opts			

Not intended for installation or construction. Dealer has ultimate responsibility for accuracy and correctness of component counts & measurements. Dealer shall verify and confirm all site dimensions and suitability of products and applications consistent with published guidelines and applicable codes. All plans, drawings and specifications are property of Maxon Furniture, Inc. and may not be reproduced without written consent.

MSP-20093 Marysville - 3rd Floor IS Department



Line #	Part Number	Part Description	Qty	List	Ext List
	.MPT3	Muslin			
34	M-PFXC-22HL	Prefix Variable Height Connector Kit 22.5H	15	\$ 131.00	\$1,965.00
	\$(P1)	P1 Paint Opts			
	.MPT3	Muslin			
35	M-PFXC-42E	Prefix Panel End Covers 42.5H	6	\$ 113.00	\$678.00
	\$(P1)	P1 Paint Opts			
	.MPT3	Muslin			
36	M-PFXC-50E	Prefix Panel End Covers 50H	1	\$ 118.00	\$118.00
	\$(P1)	P1 Paint Opts			
	.MPT3	Muslin			
37	M-PFXC-57E	Prefix Panel End Covers 57.5H	10	\$ 124.00	\$1,240.00
	\$(P1)	P1 Paint Opts			
	.MPT3	Muslin			
38	M-PFXC-S	Prefix Straight Connector Kit	20	\$ 17.00	\$340.00
39	M-PFXM-4224FP	Prefix Tackable Panel 42.5H x 24W No TC	1	\$ 730.00	\$730.00
	\$(B)	Grd B Fab			
	.SPIN	Fabr: Spin			
	02	Alabaster			
	\$(P1)	P1 Paint Opts			
	.MPT3	Muslin			
40	M-PFXM-4230FP	Prefix Tackable Panel 42.5H x 30W No TC	8	\$ 740.00	\$5,920.00
	\$(B)	Grd B Fab			

Not intended for installation or construction. Dealer has ultimate responsibility for accuracy and correctness of component counts & measurements. Dealer shall verify and confirm all site dimensions and suitability of products and applications consistent with published guidelines and applicable codes. All plans, drawings and specifications are property of Maxon Furniture, Inc. and may not be reproduced without written consent.



Line #	Part Number	Part Description	Qty	List	Ext List
	.SPIN	Fabr: Spin			
	02	Alabaster			
	\$(P1)	P1 Paint Opts			
	.MPT3	Muslin			
41	M-PFXM-4236FP	Prefix Tackable Panel 42.5H x 36W No TC	10	\$ 754.00	\$7,540.00
	\$(B)	Grd B Fab			
	.SPIN	Fabr: Spin			
	02	Alabaster			
	\$(P1)	P1 Paint Opts			
	.MPT3	Muslin			
42	M-PFXM-4242FP	Prefix Tackable Panel 42.5H x 42W No TC	12	\$ 776.00	\$9,312.00
	\$(B)	Grd B Fab			
	.SPIN	Fabr: Spin			
	02	Alabaster			
	\$(P1)	P1 Paint Opts			
	.MPT3	Muslin			
43	M-PFXM-4248FP	Prefix Tackable Panel 42.5H x 48W No TC	5	\$ 801.00	\$4,005.00
	\$(B)	Grd B Fab			
	.SPIN	Fabr: Spin			
	02	Alabaster			
	\$(P1)	P1 Paint Opts			
	.MPT3	Muslin			
44	M-PFXM-5030FP	Prefix Tackable Panel 50H x 30W No TC	5	\$ 817.00	\$4,085.00
	\$(B)	Grd B Fab			

Not intended for installation or construction. Dealer has ultimate responsibility for accuracy and correctness of component counts & measurements. Dealer shall verify and confirm all site dimensions and suitability of products and applications consistent with published guidelines and applicable codes. All plans, drawings and specifications are property of Maxon Furniture, Inc. and may not be reproduced without written consent.

MSP-20093 Marysville - 3rd Floor IS Department



Line #	Part Number	Part Description	Qty	List	Ext List
	.SPIN	Fabr: Spin			
	02	Alabaster			
	\$(P1)	P1 Paint Opts			
	.MPT3	Muslin			
45	M-PFXM-5036FP	Prefix Tackable Panel 50H x 36W No TC	10	\$ 871.00	\$8,710.00
	\$(B)	Grd B Fab			
	.SPIN	Fabr: Spin			
	02	Alabaster			
	\$(P1)	P1 Paint Opts			
	.MPT3	Muslin			
46	M-PFXM-5048FP	Prefix Tackable Panel 50H x 48W No TC	5	\$ 975.00	\$4,875.00
	\$(B)	Grd B Fab			
	.SPIN	Fabr: Spin			
	02	Alabaster			
	\$(P1)	P1 Paint Opts			
	.MPT3	Muslin			
47	M-PFXS-1530G	Prefix Glass Stacker 15H x 30W	4	\$ 784.00	\$3,136.00
	\$(P1)	P1 Paint Opts			
	.MPT3	Muslin			
	.C	Clear			
48	M-PFXS-1536G	Prefix Glass Stacker 15H x 36W	10	\$ 809.00	\$8,090.00
	\$(P1)	P1 Paint Opts			
	.MPT3	Muslin			
	.C	Clear			

Not intended for installation or construction. Dealer has ultimate responsibility for accuracy and correctness of component counts & measurements. Dealer shall verify and confirm all site dimensions and suitability of products and applications consistent with published guidelines and applicable codes. All plans, drawings and specifications are property of Maxon Furniture, Inc. and may not be reproduced without written consent.



Line #	Part Number	Part Description	Qty	List	Ext List
49	M-PFXS-1542G	Prefix Glass Stacker 15H x 42W	10	\$ 899.00	\$8,990.00
	\$(P1)	P1 Paint Opts			
	.MPT3	Muslin			
	.C	Clear			
50	M-PFXS-1548G	Prefix Glass Stacker 15H x 48W	4	\$ 965.00	\$3,860.00
	\$(P1)	P1 Paint Opts			
	.MPT3	Muslin			
	.C	Clear			
51	M-PFXTC24	Prefix Panel Top Cap 24"W	1	\$ 57.00	\$57.00
	\$(P1)	P1 Paint Opts			
	.MPT3	Muslin			
52	M-PFXTC30	Prefix Panel Top Cap 30"W	13	\$ 71.00	\$923.00
	\$(P1)	P1 Paint Opts			
	.MPT3	Muslin			
53	M-PFXTC36	Prefix Panel Top Cap 36"W	20	\$ 93.00	\$1,860.00
	\$(P1)	P1 Paint Opts			
	.MPT3	Muslin			
54	M-PFXTC42	Prefix Panel Top Cap 42"W	12	\$ 108.00	\$1,296.00
	\$(P1)	P1 Paint Opts			
	.MPT3	Muslin			
55	M-PFXTC48	Prefix Panel Top Cap 48"W	10	\$ 118.00	\$1,180.00
	\$(P1)	P1 Paint Opts			

Not intended for installation or construction. Dealer has ultimate responsibility for accuracy and correctness of component counts & measurements. Dealer shall verify and confirm all site dimensions and suitability of products and applications consistent with published guidelines and applicable codes. All plans, drawings and specifications are property of Maxon Furniture, Inc. and may not be reproduced without written consent.

MSP-20093 Marysville - 3rd Floor IS Department



Line #	Part Number	Part Description	Qty	List	Ext List
	.MPT3	Muslin			
56	M-URW2442	Univ Rec WS 24 x 42	1	\$ 486.00	\$486.00
	\$(L1STD)	L1 Standard Lam Opts			
	.C	Harvest			
	.C	Harvest			
57	M-URW2448	Univ Rec WS 24 x 48	10	\$ 529.00	\$5,290.00
	\$(L1STD)	L1 Standard Lam Opts			
	.C	Harvest			
	.C	Harvest			
58	M-UWSR42	Universal Worksurface Spanner Rail 42W	4	\$ 167.00	\$668.00
	\$(P1)	P1 Paint Opts			
	.MPT3	Muslin			
				Group Total List:	\$170,954.00
				<hr/> <hr/>	
Ext. Volume:	580.03			Project Total List:	\$170,954.00
Ext. Weight:	6,284.72			<hr/> <hr/>	

Not intended for installation or construction. Dealer has ultimate responsibility for accuracy and correctness of component counts & measurements. Dealer shall verify and confirm all site dimensions and suitability of products and applications consistent with published guidelines and applicable codes. All plans, drawings and specifications are property of Maxon Furniture, Inc. and may not be reproduced without written consent.



Marysville - 3rd Floor Finance Offices

Space Planning #: MSP-20069

Date: 1/13/2022

Notes:

Harvest laminate - Harvest edgeband - Muslin paint - Champagne
Metallic paint (DeXTR drawer pulls)



Pricing only valid for
November 2021 Price Book
K Beeler

Line #	Part Number	Part Description	Qty	List	Ext List
Jan					
1	M-DXLEP24	DeXTR 24"D x 28" End Panel Support	1	\$ 458.00	\$458.00
	\$(L1STD)	Grd L1 Standard Laminates			
	.C	Harvest			
2	M-DXLFMP4214	DeXTR 42"W x 14"H Lam Floating Modesty Panel	1	\$ 553.00	\$553.00
	\$(L1STD)	Grd L1 Standard Laminates			
	.C	Harvest			
3	M-DXLMP4028FP	DeXTR 40"W x 28"H Full Length Lam Modesty Panel	1	\$ 537.00	\$537.00
	\$(L1STD)	Grd L1 Standard Laminates			
	.C	Harvest			
4	M-MDSL29	Universal Shared C-Leg	1	\$ 421.00	\$421.00
	\$(P1)	P1 Paint Opts			
	.MPT3	Muslin			
5	M-URW2472	Univ Rec WS 24 x 72	1	\$ 684.00	\$684.00
	\$(L1STD)	L1 Standard Lam Opts			
	.C	Harvest			
	.C	Harvest			

Not intended for installation or construction. Dealer has ultimate responsibility for accuracy and correctness of component counts & measurements. Dealer shall verify and confirm all site dimensions and suitability of products and applications consistent with published guidelines and applicable codes. All plans, drawings and specifications are property of Maxon Furniture, Inc. and may not be reproduced without written consent.

MSP-20069 Marysville - 3rd Floor Finance Offices



Line #	Part Number	Part Description	Qty	List	Ext List
6	M-URW3072N	Univ Rec WS 30 x 72 No Grommets	1	\$ 738.00	\$738.00
	\$(L1STD)	L1 Standard Lam Opts			
	.C	Harvest			
	.C	Harvest			
7	M-DXL2428BBF	DeXTR 24"D x 28" Box/Box/File Pedestal Support	1	\$ 1,318.00	\$1,318.00
	\$(L1STD)	Grd L1 Standard Laminates			
	.C	Harvest			
	\$(L1STD)	Grd L1 Standard Laminates			
	.C	Harvest			
	.MPR5	Champagne Metallic			
8	M-DXL2428FF	DeXTR 24"D x 28" File/File Pedestal Support	1	\$ 1,318.00	\$1,318.00
	\$(L1STD)	Grd L1 Standard Laminates			
	.C	Harvest			
	\$(L1STD)	Grd L1 Standard Laminates			
	.C	Harvest			
	.MPR5	Champagne Metallic			
9	M-DXLOH1472S	DeXTR 14.25"Dx72"Wx13"H Stack on Storage-Sliding	1	\$ 2,370.00	\$2,370.00
	\$(L1STD)	Grd L1 Standard Laminates			
	.C	Harvest			
	\$(L1STD)	Grd L1 Standard Laminates			
	.C	Harvest			
	.W	Wall Bracket			
10	M-HAREC3S2LTF	MXitUP 3 Stage 2 Leg Rectangle T Foot	1	\$ 2,347.00	\$2,347.00
	\$(P1)	P1 Paint Opts			

Not intended for installation or construction. Dealer has ultimate responsibility for accuracy and correctness of component counts & measurements. Dealer shall verify and confirm all site dimensions and suitability of products and applications consistent with published guidelines and applicable codes. All plans, drawings and specifications are property of Maxon Furniture, Inc. and may not be reproduced without written consent.



Line #	Part Number	Part Description	Qty	List	Ext List
	.MPT3	CLR: Muslin			
	.X	Standard Glide			
	.MEM	Memory Preset			
11	M-MXHAW2472S	MXitUP HA REC Worksurface w Stiffener 24Dx72W	1	\$ 766.00	\$766.00
	\$(L1STD)	Grd L1 Standard Laminate			
	.C	Harvest			
	.C	Harvest			
	.G	Grommet			
Group Total List:					<u>\$11,510.00</u>

Office 3

12	M-DXLEP24	DeXTR 24"D x 28" End Panel Support	1	\$ 458.00	\$458.00
	\$(L1STD)	Grd L1 Standard Laminates			
	.C	Harvest			
13	M-DXLFMP4214	DeXTR 42"W x 14"H Lam Floating Modesty Panel	1	\$ 553.00	\$553.00
	\$(L1STD)	Grd L1 Standard Laminates			
	.C	Harvest			
14	M-DXLMP4028FP	DeXTR 40"W x 28"H Full Length Lam Modesty Panel	1	\$ 537.00	\$537.00
	\$(L1STD)	Grd L1 Standard Laminates			
	.C	Harvest			
15	M-MDSL29	Universal Shared C-Leg	1	\$ 421.00	\$421.00
	\$(P1)	P1 Paint Opts			
	.MPT3	Muslin			

Not intended for installation or construction. Dealer has ultimate responsibility for accuracy and correctness of component counts & measurements. Dealer shall verify and confirm all site dimensions and suitability of products and applications consistent with published guidelines and applicable codes. All plans, drawings and specifications are property of Maxon Furniture, Inc. and may not be reproduced without written consent.

MSP-20069 Marysville - 3rd Floor Finance Offices



Line #	Part Number	Part Description	Qty	List	Ext List
16	M-URW2472	Univ Rec WS 24 x 72	1	\$ 684.00	\$684.00
	\$(L1STD)	L1 Standard Lam Opts			
	.C	Harvest			
	.C	Harvest			
17	M-URW3072N	Univ Rec WS 30 x 72 No Grommets	1	\$ 738.00	\$738.00
	\$(L1STD)	L1 Standard Lam Opts			
	.C	Harvest			
	.C	Harvest			
18	M-DXL2428BBF	DeXTR 24"D x 28" Box/Box/File Pedestal Support	1	\$ 1,318.00	\$1,318.00
	\$(L1STD)	Grd L1 Standard Laminates			
	.C	Harvest			
	\$(L1STD)	Grd L1 Standard Laminates			
	.C	Harvest			
	.MPR5	Champagne Metallic			
19	M-DXL2428FF	DeXTR 24"D x 28" File/File Pedestal Support	1	\$ 1,318.00	\$1,318.00
	\$(L1STD)	Grd L1 Standard Laminates			
	.C	Harvest			
	\$(L1STD)	Grd L1 Standard Laminates			
	.C	Harvest			
	.MPR5	Champagne Metallic			
20	M-DXLOH1472S	DeXTR 14.25"Dx72"Wx13"H Stack on Storage-Sliding	1	\$ 2,370.00	\$2,370.00
	\$(L1STD)	Grd L1 Standard Laminates			
	.C	Harvest			
	\$(L1STD)	Grd L1 Standard Laminates			

Not intended for installation or construction. Dealer has ultimate responsibility for accuracy and correctness of component counts & measurements. Dealer shall verify and confirm all site dimensions and suitability of products and applications consistent with published guidelines and applicable codes. All plans, drawings and specifications are property of Maxon Furniture, Inc. and may not be reproduced without written consent.



Line #	Part Number	Part Description	Qty	List	Ext List
	.C	Harvest			
	.W	Wall Bracket			
21	M-HAREC3S2LTF	MXitUP 3 Stage 2 Leg Rectangle T Foot	1	\$ 2,347.00	\$2,347.00
	\$(P1)	P1 Paint Opt			
	.MPT3	CLR: Muslin			
	.X	Standard Glide			
	.MEM	Memory Preset			
22	M-MXHAW2472S	MXitUP HA REC Worksurface w Stiffener 24Dx72W	1	\$ 766.00	\$766.00
	\$(L1STD)	Grd L1 Standard Laminate			
	.C	Harvest			
	.C	Harvest			
	.G	Grommet			

Group Total List:

\$11,510.00

Sandy

23	M-DXLEP24	DeXTR 24"D x 28" End Panel Support	1	\$ 458.00	\$458.00
	\$(L1STD)	Grd L1 Standard Laminates			
	.C	Harvest			
24	M-DXLFMP3014	DeXTR 30"W x 14"H Lam Floating Modesty Panel	1	\$ 487.00	\$487.00
	\$(L1STD)	Grd L1 Standard Laminates			
	.C	Harvest			
25	M-DXLMP4028FP	DeXTR 40"W x 28"H Full Length Lam Modesty Panel	1	\$ 537.00	\$537.00
	\$(L1STD)	Grd L1 Standard Laminates			
	.C	Harvest			

Not intended for installation or construction. Dealer has ultimate responsibility for accuracy and correctness of component counts & measurements. Dealer shall verify and confirm all site dimensions and suitability of products and applications consistent with published guidelines and applicable codes. All plans, drawings and specifications are property of Maxon Furniture, Inc. and may not be reproduced without written consent.

MSP-20069 Marysville - 3rd Floor Finance Offices



Line #	Part Number	Part Description	Qty	List	Ext List
26	M-MDSL29	Universal Shared C-Leg	1	\$ 421.00	\$421.00
	\$(P1)	P1 Paint Opts			
	.MPT3	Muslin			
27	M-PPXM29G	Prepare X Base Med. Seated Height with Glides	1	\$ 868.00	\$868.00
	\$(P1)	P1 Paint Opts			
	.MPT3	Muslin			
28	M-URW2472	Univ Rec WS 24 x 72	1	\$ 684.00	\$684.00
	\$(L1STD)	L1 Standard Lam Opts			
	.C	Harvest			
	.C	Harvest			
29	M-URW3072N	Univ Rec WS 30 x 72 No Grommets	1	\$ 738.00	\$738.00
	\$(L1STD)	L1 Standard Lam Opts			
	.C	Harvest			
	.C	Harvest			
30	M-DXL2428BBF	DeXTR 24"D x 28" Box/Box/File Pedestal Support	1	\$ 1,318.00	\$1,318.00
	\$(L1STD)	Grd L1 Standard Laminates			
	.C	Harvest			
	\$(L1STD)	Grd L1 Standard Laminates			
	.C	Harvest			
	.MPR5	Champagne Metallic			
31	M-DXLOH1472S	DeXTR 14.25"Dx72"Wx13"H Stack on Storage-Sliding	1	\$ 2,370.00	\$2,370.00
	\$(L1STD)	Grd L1 Standard Laminates			
	.C	Harvest			

Not intended for installation or construction. Dealer has ultimate responsibility for accuracy and correctness of component counts & measurements. Dealer shall verify and confirm all site dimensions and suitability of products and applications consistent with published guidelines and applicable codes. All plans, drawings and specifications are property of Maxon Furniture, Inc. and may not be reproduced without written consent.



Line #	Part Number	Part Description	Qty	List	Ext List
	\$(L1STD)	Grd L1 Standard Laminates			
	.C	Harvest			
	.W	Wall Bracket			
32	M-DXLSLF230	DeXTR Support 2 drawer lateral: 24x30x29.5	1	\$ 2,355.00	\$2,355.00
	\$(L1STD)	Grd L1 Standard Laminates			
	.C	Harvest			
	\$(L1STD)	Grd L1 Standard Laminates			
	.C	Harvest			
	.MPR5	Champagne Metallic			
33	M-HAREC3S2LTF	MXitUP 3 Stage 2 Leg Rectangle T Foot	1	\$ 2,347.00	\$2,347.00
	\$(P1)	P1 Paint Opts			
	.MPT3	CLR: Muslin			
	.X	Standard Glide			
	.MEM	Memory Preset			
34	M-MXHAW2472S	MXitUP HA REC Worksurface w Stiffener 24Dx72W	1	\$ 766.00	\$766.00
	\$(L1STD)	Grd L1 Standard Laminate			
	.C	Harvest			
	.C	Harvest			
	.G	Grommet			
35	M-PPLF36RND	Prepare 36" Diameter Laminate-Flat Edge	1	\$ 774.00	\$774.00
	.X	Non-FSC Wood			
	\$(L1STD)	Grd L1 Standard Laminates			
	.C	Harvest			
	.C	Harvest			

Not intended for installation or construction. Dealer has ultimate responsibility for accuracy and correctness of component counts & measurements. Dealer shall verify and confirm all site dimensions and suitability of products and applications consistent with published guidelines and applicable codes. All plans, drawings and specifications are property of Maxon Furniture, Inc. and may not be reproduced without written consent.

MSP-20069 Marysville - 3rd Floor Finance Offices



Line #	Part Number	Part Description	Qty	List	Ext List
				Group Total List:	\$14,123.00
Ext. Volume:	193.00			Project Total List:	\$37,143.00
Ext. Weight:	2,149.11				

Not intended for installation or construction. Dealer has ultimate responsibility for accuracy and correctness of component counts & measurements. Dealer shall verify and confirm all site dimensions and suitability of products and applications consistent with published guidelines and applicable codes. All plans, drawings and specifications are property of Maxon Furniture, Inc. and may not be reproduced without written consent.



MSP-20069 Marysville - 3rd Floor Finance Offices

Page 8 of 8

Marysville - 3rd Floor Finance Workstations

Space Planning #: MSP-20108

Date: 1/11/2022

Notes:

Spin Alabaster panel fabric - Harvest laminate & edgeband -
Muslin paint - Clear glass



Pricing only valid for
November 2021 Price Book
K Beeler

Line #	Part Number	Part Description	Qty	List	Ext List
1	M-CWB2	S1K Cantilever W/S Bracket Kit (2 pack)	8	\$ 43.00	\$344.00
	\$(P1)	P1 Paint Opts			
	.MPT3	Muslin			
2	M-ED1	Duplex Outlet Circuit #1	9	\$ 71.00	\$639.00
	.EU	Muslin			
3	M-ED4	Duplex Outlet Circuit #4 - Isolated/Dedicated	9	\$ 71.00	\$639.00
	.EU	Muslin			
4	M-EH24	Standard Single Block Duplex Harness 24W	6	\$ 300.00	\$1,800.00
5	M-EH30	Standard Double Block Duplex Harness 30W	6	\$ 332.00	\$1,992.00
6	M-EH36	Standard Double Block Duplex Harness 36W	1	\$ 365.00	\$365.00
7	M-EP30	Pass-Thru Harness 30W	4	\$ 231.00	\$924.00
8	M-EPF2	Power In-Feed through Side Receptacle	2	\$ 442.00	\$884.00
9	M-HAMREC3S2LTF	MXitUP Max 3 Stage 2 Leg T Foot	9	\$ 2,712.00	\$24,408.00
	\$(P1)	P1 Paint Opts			
	.MPT3	CLR: Muslin			

Not intended for installation or construction. Dealer has ultimate responsibility for accuracy and correctness of component counts & measurements. Dealer shall verify and confirm all site dimensions and suitability of products and applications consistent with published guidelines and applicable codes. All plans, drawings and specifications are property of Maxon Furniture, Inc. and may not be reproduced without written consent.

MSP-20108 Marysville - 3rd Floor Finance Workstations



Page 1 of 7

Line #	Part Number	Part Description	Qty	List	Ext List
	.X	Standard Glide			
	.MEM	Memory Preset			
10	M-ICPSP281524BBFM	28Hx15Wx24D Support Ped Plinth Mtl Front BBF	9	\$ 1,182.00	\$10,638.00
	.BX	Recessed Plinth			
	.R	Recessed			
	~	Undecided PAINT Option			
	\$(P1)	P1 Paint Opts			
	.NA	Match Case			
	.L	Standard Lock			
11	M-ICPSP281524FFM	28Hx15Wx24D Support Ped Plinth Mtl Front FF	9	\$ 1,182.00	\$10,638.00
	.BX	Recessed Plinth			
	.R	Recessed			
	~	Undecided PAINT Option			
	\$(P1)	P1 Paint Opts			
	.NA	Match Case			
	.L	Standard Lock			
12	M-MDSL29	Universal Shared C-Leg	9	\$ 421.00	\$3,789.00
	\$(P1)	P1 Paint Opts			
	.MPT3	Muslin			
13	M-PFC42PSN	42.5H Extended Straight Connector Post "S"	3	\$ 170.00	\$510.00
	\$(P1)	P1 Paint Opts			
	.MPT3	Muslin			
14	M-PFC65PSN	65H Extended Straight Connector Post "S"	12	\$ 215.00	\$2,580.00

Not intended for installation or construction. Dealer has ultimate responsibility for accuracy and correctness of component counts & measurements. Dealer shall verify and confirm all site dimensions and suitability of products and applications consistent with published guidelines and applicable codes. All plans, drawings and specifications are property of Maxon Furniture, Inc. and may not be reproduced without written consent.



Line #	Part Number	Part Description	Qty	List	Ext List
	\$(P1)	P1 Paint Opts			
	.MPT3	Muslin			
15	M-PFC65PLN	65H "L" Connector Post	11	\$ 222.00	\$2,442.00
	\$(P1)	P1 Paint Opts			
	.MPT3	Muslin			
16	M-PFC65PTN	65H "T" Connector Post	4	\$ 215.00	\$860.00
	\$(P1)	P1 Paint Opts			
	.MPT3	Muslin			
17	M-PFC65PXN	65H "X" Connector Post	2	\$ 208.00	\$416.00
	\$(P1)	P1 Paint Opts			
	.MPT3	Muslin			
18	M-PFCS1	Single Connector Strap	5	\$ 17.00	\$85.00
19	M-PFCSL	"L" Connector Strap	7	\$ 28.00	\$196.00
20	M-PFCSS	Extended Straight Connector Strap "S"	15	\$ 34.00	\$510.00
21	M-PFCST	"T" Connector Strap	3	\$ 34.00	\$102.00
22	M-PFCSX	"X" Connector Strap	2	\$ 41.00	\$82.00
23	M-PFXC-22HL	Prefix Variable Height Connector Kit 22.5H	6	\$ 131.00	\$786.00
	\$(P1)	P1 Paint Opts			
	.MPT3	Muslin			
24	M-PFXC-65E	Prefix Panel End Covers 65H	12	\$ 131.00	\$1,572.00
	\$(P1)	P1 Paint Opts			

Not intended for installation or construction. Dealer has ultimate responsibility for accuracy and correctness of component counts & measurements. Dealer shall verify and confirm all site dimensions and suitability of products and applications consistent with published guidelines and applicable codes. All plans, drawings and specifications are property of Maxon Furniture, Inc. and may not be reproduced without written consent.

MSP-20108 Marysville - 3rd Floor Finance Workstations



Line #	Part Number	Part Description	Qty	List	Ext List
	.MPT3	Muslin			
25	M-PFXC-S	Prefix Straight Connector Kit	9	\$ 17.00	\$153.00
26	M-PFXM-4236FP	Prefix Tackable Panel 42.5H x 36W No TC	3	\$ 754.00	\$2,262.00
	\$(B)	Grd B Fab			
	.SPIN	Fabr: Spin			
	02	Alabaster			
	\$(P1)	P1 Paint Opts			
	.MPT3	Muslin			
27	M-PFXM-4242FP	Prefix Tackable Panel 42.5H x 42W No TC	3	\$ 776.00	\$2,328.00
	\$(B)	Grd B Fab			
	.SPIN	Fabr: Spin			
	02	Alabaster			
	\$(P1)	P1 Paint Opts			
	.MPT3	Muslin			
28	M-PFXM-5024FP	Prefix Tackable Panel 50H x 24W No TC	6	\$ 784.00	\$4,704.00
	\$(B)	Grd B Fab			
	.SPIN	Fabr: Spin			
	02	Alabaster			
	\$(P1)	P1 Paint Opts			
	.MPT3	Muslin			
29	M-PFXM-5030FP	Prefix Tackable Panel 50H x 30W No TC	12	\$ 817.00	\$9,804.00
	\$(B)	Grd B Fab			
	.SPIN	Fabr: Spin			

Not intended for installation or construction. Dealer has ultimate responsibility for accuracy and correctness of component counts & measurements. Dealer shall verify and confirm all site dimensions and suitability of products and applications consistent with published guidelines and applicable codes. All plans, drawings and specifications are property of Maxon Furniture, Inc. and may not be reproduced without written consent.



Line #	Part Number	Part Description	Qty	List	Ext List
	02	Alabaster			
	\$(P1)	P1 Paint Opts			
	.MPT3	Muslin			
30	M-PFXM-5036FP	Prefix Tackable Panel 50H x 36W No TC	18	\$ 871.00	\$15,678.00
	\$(B)	Grd B Fab			
	.SPIN	Fabr: Spin			
	02	Alabaster			
	\$(P1)	P1 Paint Opts			
	.MPT3	Muslin			
31	M-PFXM-5042FP	Prefix Tackable Panel 50H x 42W No TC	9	\$ 922.00	\$8,298.00
	\$(B)	Grd B Fab			
	.SPIN	Fabr: Spin			
	02	Alabaster			
	\$(P1)	P1 Paint Opts			
	.MPT3	Muslin			
32	M-PFXS-1524G	Prefix Glass Stacker 15H x 24W	6	\$ 694.00	\$4,164.00
	\$(P1)	P1 Paint Opts			
	.MPT3	Muslin			
	.c	clear			
33	M-PFXS-1530G	Prefix Glass Stacker 15H x 30W	12	\$ 784.00	\$9,408.00
	\$(P1)	P1 Paint Opts			
	.MPT3	Muslin			
	.c	Clear			

Not intended for installation or construction. Dealer has ultimate responsibility for accuracy and correctness of component counts & measurements. Dealer shall verify and confirm all site dimensions and suitability of products and applications consistent with published guidelines and applicable codes. All plans, drawings and specifications are property of Maxon Furniture, Inc. and may not be reproduced without written consent.

MSP-20108 Marysville - 3rd Floor Finance Workstations



Line #	Part Number	Part Description	Qty	List	Ext List
34	M-PFXS-1536G	Prefix Glass Stacker 15H x 36W	18	\$ 809.00	\$14,562.00
	\$(P1)	P1 Paint Opts			
	.MPT3	Muslin			
	.C	Clear			
35	M-PFXS-1542G	Prefix Glass Stacker 15H x 42W	9	\$ 899.00	\$8,091.00
	\$(P1)	P1 Paint Opts			
	.MPT3	Muslin			
	.C	Clear			
36	M-PFXTC24	Prefix Panel Top Cap 24"W	6	\$ 57.00	\$342.00
	\$(P1)	P1 Paint Opts			
	.MPT3	Muslin			
37	M-PFXTC30	Prefix Panel Top Cap 30"W	12	\$ 71.00	\$852.00
	\$(P1)	P1 Paint Opts			
	.MPT3	Muslin			
38	M-PFXTC36	Prefix Panel Top Cap 36"W	21	\$ 93.00	\$1,953.00
	\$(P1)	P1 Paint Opts			
	.MPT3	Muslin			
39	M-PFXTC42	Prefix Panel Top Cap 42"W	12	\$ 108.00	\$1,296.00
	\$(P1)	P1 Paint Opts			
	.MPT3	Muslin			
40	M-URW2454	Univ Rec WS 24 x 54	9	\$ 552.00	\$4,968.00
	\$(L1STD)	L1 Standard Lam Opts			
	.C	Harvest			

Not intended for installation or construction. Dealer has ultimate responsibility for accuracy and correctness of component counts & measurements. Dealer shall verify and confirm all site dimensions and suitability of products and applications consistent with published guidelines and applicable codes. All plans, drawings and specifications are property of Maxon Furniture, Inc. and may not be reproduced without written consent.



Line #	Part Number	Part Description	Qty	List	Ext List
	.C	Harvest			
41	M-URW3078	Univ Rec WS 30 x 78	9	\$ 788.00	\$7,092.00
	\$(L1STD)	L1 Standard Lam Opts			
	.C	Harvest			
	.C	Harvest			
42	M-UWSR36	Universal Worksurface Spanner Rail 36W	3	\$ 154.00	\$462.00
	\$(P1)	P1 Paint Opts			
	.MPT3	Muslin			
Group Total List:					\$163,618.00
Ext. Volume:	555.24			Project Total List:	\$163,618.00
Ext. Weight:	5,712.62				

Not intended for installation or construction. Dealer has ultimate responsibility for accuracy and correctness of component counts & measurements. Dealer shall verify and confirm all site dimensions and suitability of products and applications consistent with published guidelines and applicable codes. All plans, drawings and specifications are property of Maxon Furniture, Inc. and may not be reproduced without written consent.

MSP-20108 Marysville - 3rd Floor Finance Workstations



Marysville - 4th Floor Legal Workstations

Space Planning #: MSP-20073

Date: 12/28/2021

Notes:

Spin Alabaster and Spin Heron (accent) panel fabrics - Harvest laminate & edgeband - Muslin paint - Clear glass



Position to Win.

Pricing only valid for
November 2021 Price Book
K Beeler

Line #	Part Number	Part Description	Qty	List	Ext List
1	M-C1L-20	Univ Cantilevered Worksurf Bracket LH 20"	2	\$ 85.00	\$170.00
	\$(P1)	P1 Paint Opts			
	.MPT3	Muslin			
2	M-C1R-20	Univ Cantilevered Worksurf Bracket RH 20"	2	\$ 85.00	\$170.00
	\$(P1)	P1 Paint Opts			
	.MPT3	Muslin			
3	M-CWB2	S1K Cantilever W/S Bracket Kit (2 pack)	2	\$ 43.00	\$86.00
	\$(P1)	P1 Paint Opts			
	.MPT3	Muslin			
4	M-ED1	Duplex Outlet Circuit #1	4	\$ 71.00	\$284.00
	.EU	Muslin			
5	M-ED4	Duplex Outlet Circuit #4 - Isolated/Dedicated	4	\$ 71.00	\$284.00
	.EU	Muslin			
6	M-EH30	Standard Double Block Duplex Harness 30W	2	\$ 332.00	\$664.00
7	M-EH36	Standard Double Block Duplex Harness 36W	2	\$ 365.00	\$730.00
8	M-EP42	Pass-Thru Harness 42W	2	\$ 250.00	\$500.00

Not intended for installation or construction. Dealer has ultimate responsibility for accuracy and correctness of component counts & measurements. Dealer shall verify and confirm all site dimensions and suitability of products and applications consistent with published guidelines and applicable codes. All plans, drawings and specifications are property of Maxon Furniture, Inc. and may not be reproduced without written consent.

MSP-20073 Marysville - 4th Floor Legal Workstations



Page 1 of 7

Line #	Part Number	Part Description	Qty	List	Ext List
9	M-EPF2	Power In-Feed through Side Receptacle	1	\$ 442.00	\$442.00
10	M-HAMREC3S2LTF	MXitUP Max 3 Stage 2 Leg T Foot	4	\$ 2,712.00	\$10,848.00
	\$(P1)	P1 Paint Opts			
	.MPT3	CLR: Muslin			
	.X	Standard Glide			
	.MEM	Memory Preset			
11	M-ICCRPB22L	Include 22H (1.5H) Panel Bracket LH	2	\$ 111.00	\$222.00
	\$(P1)	P1 Paint Opts			
	.MPT3	Muslin			
12	M-ICCRPB22R	Include 22H (1.5H) Panel Bracket RH	2	\$ 111.00	\$222.00
	\$(P1)	P1 Paint Opts			
	.MPT3	Muslin			
13	M-ICPM271524BBFM	27Hx15Wx18D Mob Ped Mtl Front FF	4	\$ 1,349.00	\$5,396.00
	.R	Recessed			
	\$(P1)	P1 Paint Opts			
	.MPT3	Muslin			
	\$(P1)	P1 Paint Opts			
	.NA	Match Case			
	.L	Standard Lock			
14	M-ICTSF502424LFFM	Include 50x24x24 Side Access Twr MetFront Foot	2	\$ 4,849.00	\$9,698.00
	.SF	Contain Foot			
	~	Undecided FOOT Option			
	.R	Recessed			

Not intended for installation or construction. Dealer has ultimate responsibility for accuracy and correctness of component counts & measurements. Dealer shall verify and confirm all site dimensions and suitability of products and applications consistent with published guidelines and applicable codes. All plans, drawings and specifications are property of Maxon Furniture, Inc. and may not be reproduced without written consent.



Line #	Part Number	Part Description	Qty	List	Ext List
	\$(P1)	P1 Paint Opts			
	.MPT3	Muslin			
	\$(P1)	P1 Paint Opts			
	.NA	Match Case			
	.NA	No			
	.L	Standard Lock			
15	M-ICTSF502424RFFM	Include 50x24x24 Side Access Twr MetFront Foot	2	\$ 4,849.00	\$9,698.00
	.SF	Contain Foot			
	~	Undecided FOOT Option			
	.R	Recessed			
	\$(P1)	P1 Paint Opts			
	.MPT3	Muslin			
	\$(P1)	P1 Paint Opts			
	.NA	Match Case			
	.NA	No			
	.L	Standard Lock			
16	M-MDSL29	Universal Shared C-Leg	4	\$ 421.00	\$1,684.00
	\$(P1)	P1 Paint Opts			
	.MPT3	Muslin			
17	M-MXHAW3084S	MXitUP HA REC Worksurface w Stiffener 30Dx84W	4	\$ 884.00	\$3,536.00
	\$(L1STD)	Grd L1 Standard Laminate			
	.C	Harvest			
	.C	Harvest			
	.G	Grommet			

Not intended for installation or construction. Dealer has ultimate responsibility for accuracy and correctness of component counts & measurements. Dealer shall verify and confirm all site dimensions and suitability of products and applications consistent with published guidelines and applicable codes. All plans, drawings and specifications are property of Maxon Furniture, Inc. and may not be reproduced without written consent.

MSP-20073 Marysville - 4th Floor Legal Workstations



Line #	Part Number	Part Description	Qty	List	Ext List
18	M-PFC57PLN	57.5H "L" Connector Post	4	\$ 208.00	\$832.00
	\$(P1)	P1 Paint Opts			
	.MPT3	Muslin			
19	M-PFC57PTN	57.5H "T" Connector Post	4	\$ 200.00	\$800.00
	\$(P1)	P1 Paint Opts			
	.MPT3	Muslin			
20	M-PFC57PXN	57.5H "X" Connector Post	1	\$ 193.00	\$193.00
	\$(P1)	P1 Paint Opts			
	.MPT3	Muslin			
21	M-PFCSL	"L" Connector Strap	4	\$ 28.00	\$112.00
22	M-PFCST	"T" Connector Strap	4	\$ 34.00	\$136.00
23	M-PFCSX	"X" Connector Strap	1	\$ 41.00	\$41.00
24	M-PFXC-57E	Prefix Panel End Covers 57.5H	8	\$ 124.00	\$992.00
	\$(P1)	P1 Paint Opts			
	.MPT3	Muslin			
25	M-PFXC-S	Prefix Straight Connector Kit	10	\$ 17.00	\$170.00
26	M-PFXM-4224FP	Prefix Tackable Panel 42.5H x 24W No TC	2	\$ 730.00	\$1,460.00
	\$(B)	Grd B Fab			
	.SPIN	Fabr: Spin			
	02	Alabaster			
	\$(P1)	P1 Paint Opts			
	.MPT3	Muslin			

Not intended for installation or construction. Dealer has ultimate responsibility for accuracy and correctness of component counts & measurements. Dealer shall verify and confirm all site dimensions and suitability of products and applications consistent with published guidelines and applicable codes. All plans, drawings and specifications are property of Maxon Furniture, Inc. and may not be reproduced without written consent.



Line #	Part Number	Part Description	Qty	List	Ext List
27	M-PFXM-4224FP	Prefix Tackable Panel 42.5H x 24W No TC	2	\$ 730.00	\$1,460.00
	\$(B)	Grd B Fab			
	.SPIN	Fabr: Spin			
	13	Heron			
	\$(P1)	P1 Paint Opts			
	.MPT3	Muslin			
28	M-PFXM-4230FP	Prefix Tackable Panel 42.5H x 30W No TC	2	\$ 740.00	\$1,480.00
	\$(B)	Grd B Fab			
	.SPIN	Fabr: Spin			
	02	Alabaster			
	\$(P1)	P1 Paint Opts			
	.MPT3	Muslin			
29	M-PFXM-4236FP	Prefix Tackable Panel 42.5H x 36W No TC	2	\$ 754.00	\$1,508.00
	\$(B)	Grd B Fab			
	.SPIN	Fabr: Spin			
	02	Alabaster			
	\$(P1)	P1 Paint Opts			
	.MPT3	Muslin			
30	M-PFXM-4242FP	Prefix Tackable Panel 42.5H x 42W No TC	16	\$ 776.00	\$12,416.00
	\$(B)	Grd B Fab			
	.SPIN	Fabr: Spin			
	02	Alabaster			
	\$(P1)	P1 Paint Opts			
	.MPT3	Muslin			

Not intended for installation or construction. Dealer has ultimate responsibility for accuracy and correctness of component counts & measurements. Dealer shall verify and confirm all site dimensions and suitability of products and applications consistent with published guidelines and applicable codes. All plans, drawings and specifications are property of Maxon Furniture, Inc. and may not be reproduced without written consent.

MSP-20073 Marysville - 4th Floor Legal Workstations



Line #	Part Number	Part Description	Qty	List	Ext List
31	M-PFXM-4242FP	Prefix Tackable Panel 42.5H x 42W No TC	2	\$ 776.00	\$1,552.00
	\$(B)	Grd B Fab			
	.SPIN	Fabr: Spin			
	13	Heron			
	\$(P1)	P1 Paint Opts			
	.MPT3	Muslin			
32	M-PFXS-1524G	Prefix Glass Stacker 15H x 24W	4	\$ 694.00	\$2,776.00
	\$(P1)	P1 Paint Opts			
	.MPT3	Muslin			
	.C	Clear			
33	M-PFXS-1530G	Prefix Glass Stacker 15H x 30W	2	\$ 784.00	\$1,568.00
	\$(P1)	P1 Paint Opts			
	.MPT3	Muslin			
	.C	Clear			
34	M-PFXS-1536G	Prefix Glass Stacker 15H x 36W	2	\$ 809.00	\$1,618.00
	\$(P1)	P1 Paint Opts			
	.MPT3	Muslin			
	.C	Clear			
35	M-PFXS-1542G	Prefix Glass Stacker 15H x 42W	18	\$ 899.00	\$16,182.00
	\$(P1)	P1 Paint Opts			
	.MPT3	Muslin			
	.C	Clear			
36	M-PFXTC24	Prefix Panel Top Cap 24"W	4	\$ 57.00	\$228.00

Not intended for installation or construction. Dealer has ultimate responsibility for accuracy and correctness of component counts & measurements. Dealer shall verify and confirm all site dimensions and suitability of products and applications consistent with published guidelines and applicable codes. All plans, drawings and specifications are property of Maxon Furniture, Inc. and may not be reproduced without written consent.



Line #	Part Number	Part Description	Qty	List	Ext List
	\$(P1)	P1 Paint Opts			
	.MPT3	Muslin			
37	M-PFXTC30	Prefix Panel Top Cap 30"W	2	\$ 71.00	\$142.00
	\$(P1)	P1 Paint Opts			
	.MPT3	Muslin			
38	M-PFXTC36	Prefix Panel Top Cap 36"W	2	\$ 93.00	\$186.00
	\$(P1)	P1 Paint Opts			
	.MPT3	Muslin			
39	M-PFXTC42	Prefix Panel Top Cap 42"W	18	\$ 108.00	\$1,944.00
	\$(P1)	P1 Paint Opts			
	.MPT3	Muslin			
40	M-TB2W1	Univ Tower to Worksurface Bracket	4	\$ 60.00	\$240.00
	\$(P1)	P1 Paint Opts			
	.MPT3	Muslin			
41	M-URW2454	Univ Rec WS 24 x 54	4	\$ 552.00	\$2,208.00
	\$(L1STD)	L1 Standard Lam Opts			
	.C	Harvest			
	.C	Harvest			
Group Total List:					\$94,878.00
Ext. Volume:	321.14	Project Total List:			\$94,878.00
Ext. Weight:	2,544.06				

Not intended for installation or construction. Dealer has ultimate responsibility for accuracy and correctness of component counts & measurements. Dealer shall verify and confirm all site dimensions and suitability of products and applications consistent with published guidelines and applicable codes. All plans, drawings and specifications are property of Maxon Furniture, Inc. and may not be reproduced without written consent.

MSP-20073 Marysville - 4th Floor Legal Workstations



Marysville - 4th Floor HR Offices

Space Planning #: MSP-20135

Date: 1/19/2022

Notes:

Harvest laminate - Harvest edgeband - Muslin paint - Champagne
Metallic paint (DeXTR drawer pulls)



Pricing only valid for
November 2021 Price Book
K Beeler

Line #	Part Number	Part Description	Qty	List	Ext List
Conference Room					
1	M-PPGST	Prepare Support Gusset for large tops-Pair	1	\$ 289.00	\$289.00
	\$(P1)	P1 Paint Opts			
	.MPT3	Muslin			
2	M-PPTLSG	Prepare T Base Large Pair Seated Height w/Glides	1	\$ 1,207.00	\$1,207.00
	\$(P1)	P1 Paint Opts			
	.MPT3	Muslin			
3	M-PPLF4284RT	Prepare 42" X 84" Racetrack Laminate-Flat Edge	1	\$ 1,596.00	\$1,596.00
	.X	Non-FSC Wood			
	\$(L1STD)	Grd L1 Standard Laminates			
	.C	Harvest			
	.C	Harvest			
	.C0	No Cutouts			
Group Total List:					\$3,092.00

Office #1

4	M-DXLEP24	DeXTR 24"D x 28" End Panel Support	1	\$ 458.00	\$458.00
	\$(L1STD)	Grd L1 Standard Laminates			

Not intended for installation or construction. Dealer has ultimate responsibility for accuracy and correctness of component counts & measurements. Dealer shall verify and confirm all site dimensions and suitability of products and applications consistent with published guidelines and applicable codes. All plans, drawings and specifications are property of Maxon Furniture, Inc. and may not be reproduced without written consent.

MSP-20135 Marysville - 4th Floor HR Offices



Line #	Part Number	Part Description	Qty	List	Ext List
	.C	Harvest			
5	M-DXLMP4028FP	DeXTR 40"W x 28"H Full Length Lam Modesty Panel	1	\$ 537.00	\$537.00
	\$(L1STD)	Grd L1 Standard Laminates			
	.C	Harvest			
6	M-URW3072N	Univ Rec WS 30 x 72 No Grommets	1	\$ 738.00	\$738.00
	\$(L1STD)	L1 Standard Lam Opts			
	.C	Harvest			
	.C	Harvest			
7	M-DXL2428BBF	DeXTR 24"D x 28" Box/Box/File Pedestal Support	1	\$ 1,318.00	\$1,318.00
	\$(L1STD)	Grd L1 Standard Laminates			
	.C	Harvest			
	\$(L1STD)	Grd L1 Standard Laminates			
	.C	Harvest			
	.MPR5	Champagne Metallic			
8	M-DXLM211520BF	DeXTR Mobile ped: 20x15.8x21.5	1	\$ 1,412.00	\$1,412.00
	\$(L1STD)	Grd L1 Standard Laminates			
	.C	Harvest			
	\$(L1STD)	Grd L1 Standard Laminates			
	.C	Harvest			
	.MPR5	Champagne Metallic			
9	M-HAREC3S2LTF	MXitUP 3 Stage 2 Leg Rectangle T Foot	1	\$ 2,347.00	\$2,347.00
	\$(P1)	P1 Paint Opts			
	.MPT3	CLR: Muslin			

Not intended for installation or construction. Dealer has ultimate responsibility for accuracy and correctness of component counts & measurements. Dealer shall verify and confirm all site dimensions and suitability of products and applications consistent with published guidelines and applicable codes. All plans, drawings and specifications are property of Maxon Furniture, Inc. and may not be reproduced without written consent.



Line #	Part Number	Part Description	Qty	List	Ext List
	.X	Standard Glide			
	.MEM	Memory Preset			
10	M-MXHAW2454	MXitUP HA REC Worksurface 24Dx54W	1	\$ 556.00	\$556.00
	\$(L1STD)	Grd L1 Standard Laminate			
	.C	Harvest			
	.C	Harvest			
	.G	Grommet			
Group Total List:					\$7,366.00

Office #2

11	M-DXLEP24	DeXTR 24"D x 28" End Panel Support	1	\$ 458.00	\$458.00
	\$(L1STD)	Grd L1 Standard Laminates			
	.C	Harvest			
12	M-DXLMP4028FP	DeXTR 40"W x 28"H Full Length Lam Modesty Panel	1	\$ 537.00	\$537.00
	\$(L1STD)	Grd L1 Standard Laminates			
	.C	Harvest			
13	M-URW3072N	Univ Rec WS 30 x 72 No Grommets	1	\$ 738.00	\$738.00
	\$(L1STD)	L1 Standard Lam Opts			
	.C	Harvest			
	.C	Harvest			
14	M-DXL2428BBF	DeXTR 24"D x 28" Box/Box/File Pedestal Support	1	\$ 1,318.00	\$1,318.00
	\$(L1STD)	Grd L1 Standard Laminates			
	.C	Harvest			
	\$(L1STD)	Grd L1 Standard Laminates			

Not intended for installation or construction. Dealer has ultimate responsibility for accuracy and correctness of component counts & measurements. Dealer shall verify and confirm all site dimensions and suitability of products and applications consistent with published guidelines and applicable codes. All plans, drawings and specifications are property of Maxon Furniture, Inc. and may not be reproduced without written consent.

MSP-20135 Marysville - 4th Floor HR Offices



Line #	Part Number	Part Description	Qty	List	Ext List
	.C	Harvest			
	.MPR5	Champagne Metallic			
15	M-DXLM211520BF	DeXTR Mobile ped: 20x15.8x21.5	1	\$ 1,412.00	\$1,412.00
	\$(L1STD)	Grd L1 Standard Laminates			
	.C	Harvest			
	\$(L1STD)	Grd L1 Standard Laminates			
	.C	Harvest			
	.MPR5	Champagne Metallic			
16	M-HAREC3S2LTF	MXitUP 3 Stage 2 Leg Rectangle T Foot	1	\$ 2,347.00	\$2,347.00
	\$(P1)	P1 Paint Opts			
	.MPT3	CLR: Muslin			
	.X	Standard Glide			
	.MEM	Memory Preset			
17	M-MXHAW2460S	MXitUP HA REC Worksurface w Stiffener 24Dx60W	1	\$ 666.00	\$666.00
	\$(L1STD)	Grd L1 Standard Laminate			
	.C	Harvest			
	.C	Harvest			
	.G	Grommet			
Group Total List:					\$7,476.00

Office #3

18	M-DXLEP24	DeXTR 24"D x 28" End Panel Support	1	\$ 458.00	\$458.00
	\$(L1STD)	Grd L1 Standard Laminates			
	.C	Harvest			

Not intended for installation or construction. Dealer has ultimate responsibility for accuracy and correctness of component counts & measurements. Dealer shall verify and confirm all site dimensions and suitability of products and applications consistent with published guidelines and applicable codes. All plans, drawings and specifications are property of Maxon Furniture, Inc. and may not be reproduced without written consent.



Line #	Part Number	Part Description	Qty	List	Ext List
19	M-DXLMP4028FP	DeXTR 40"W x 28"H Full Length Lam Modesty Panel	1	\$ 537.00	\$537.00
	\$(L1STD)	Grd L1 Standard Laminates			
	.C	Harvest			
20	M-MDSL29	Universal Shared C-Leg	1	\$ 421.00	\$421.00
	\$(P1)	P1 Paint Opts			
	.MPT3	Muslin			
21	M-URW2472	Univ Rec WS 24 x 72	1	\$ 684.00	\$684.00
	\$(L1STD)	L1 Standard Lam Opts			
	.C	Harvest			
	.C	Harvest			
22	M-URW3072N	Univ Rec WS 30 x 72 No Grommets	1	\$ 738.00	\$738.00
	\$(L1STD)	L1 Standard Lam Opts			
	.C	Harvest			
	.C	Harvest			
23	M-DXL2428BBF	DeXTR 24"D x 28" Box/Box/File Pedestal Support	1	\$ 1,318.00	\$1,318.00
	\$(L1STD)	Grd L1 Standard Laminates			
	.C	Harvest			
	\$(L1STD)	Grd L1 Standard Laminates			
	.C	Harvest			
	.MPR5	Champagne Metallic			
24	M-DXLOH1472S	DeXTR 14.25"Dx72"Wx13"H Stack on Storage-Sliding	1	\$ 2,370.00	\$2,370.00
	\$(L1STD)	Grd L1 Standard Laminates			
	.C	Harvest			

Not intended for installation or construction. Dealer has ultimate responsibility for accuracy and correctness of component counts & measurements. Dealer shall verify and confirm all site dimensions and suitability of products and applications consistent with published guidelines and applicable codes. All plans, drawings and specifications are property of Maxon Furniture, Inc. and may not be reproduced without written consent.

MSP-20135 Marysville - 4th Floor HR Offices



Line #	Part Number	Part Description	Qty	List	Ext List
	\$(L1STD)	Grd L1 Standard Laminates			
	.C	Harvest			
	.W	Wall Bracket			
25	M-DXLSLF230	DeXTR Support 2 drawer lateral: 24x30x29.5	1	\$ 2,355.00	\$2,355.00
	\$(L1STD)	Grd L1 Standard Laminates			
	.C	Harvest			
	\$(L1STD)	Grd L1 Standard Laminates			
	.C	Harvest			
	.MPR5	Champagne Metallic			
26	M-DXLT652424RBBF	DeXTR 24"Dx24"Wx65"H Personal Storage Tower rh	1	\$ 4,829.00	\$4,829.00
	\$(L1STD)	Grd L1 Standard Laminates			
	.C	Harvest			
	\$(L1STD)	Grd L1 Standard Laminates			
	.C	Harvest			
	.MPR5	Champagne Metallic			
27	M-HAREC3S2LTF	MXitUP 3 Stage 2 Leg Rectangle T Foot	1	\$ 2,347.00	\$2,347.00
	\$(P1)	P1 Paint Opts			
	.MPT3	CLR: Muslin			
	.X	Standard Glide			
	.MEM	Memory Preset			
28	M-MXHAW2472S	MXitUP HA REC Worksurface w Stiffener 24Dx72W	1	\$ 766.00	\$766.00
	\$(L1STD)	Grd L1 Standard Laminate			
	.C	Harvest			
	.C	Harvest			

Not intended for installation or construction. Dealer has ultimate responsibility for accuracy and correctness of component counts & measurements. Dealer shall verify and confirm all site dimensions and suitability of products and applications consistent with published guidelines and applicable codes. All plans, drawings and specifications are property of Maxon Furniture, Inc. and may not be reproduced without written consent.



Line #	Part Number	Part Description	Qty	List	Ext List
	.G	Grommet			
Group Total List:					\$16,823.00

Office #4

29	M-DXLEP24	DeXTR 24"D x 28" End Panel Support	1	\$ 458.00	\$458.00
	\$(L1STD)	Grd L1 Standard Laminates			
	.C	Harvest			
30	M-DXLMP4028FP	DeXTR 40"W x 28"H Full Length Lam Modesty Panel	1	\$ 537.00	\$537.00
	\$(L1STD)	Grd L1 Standard Laminates			
	.C	Harvest			
31	M-MDSL29	Universal Shared C-Leg	1	\$ 421.00	\$421.00
	\$(P1)	P1 Paint Opts			
	.MPT3	Muslin			
32	M-URW2472	Univ Rec WS 24 x 72	1	\$ 684.00	\$684.00
	\$(L1STD)	L1 Standard Lam Opts			
	.C	Harvest			
	.C	Harvest			
33	M-URW3072N	Univ Rec WS 30 x 72 No Grommets	1	\$ 738.00	\$738.00
	\$(L1STD)	L1 Standard Lam Opts			
	.C	Harvest			
	.C	Harvest			
34	M-DXL2428BBF	DeXTR 24"D x 28" Box/Box/File Pedestal Support	1	\$ 1,318.00	\$1,318.00
	\$(L1STD)	Grd L1 Standard Laminates			

Not intended for installation or construction. Dealer has ultimate responsibility for accuracy and correctness of component counts & measurements. Dealer shall verify and confirm all site dimensions and suitability of products and applications consistent with published guidelines and applicable codes. All plans, drawings and specifications are property of Maxon Furniture, Inc. and may not be reproduced without written consent.

MSP-20135 Marysville - 4th Floor HR Offices



Line #	Part Number	Part Description	Qty	List	Ext List
	.C	Harvest			
	\$(L1STD)	Grd L1 Standard Laminates			
	.C	Harvest			
	.MPR5	Champagne Metallic			
35	M-DXLOH1472S	DeXTR 14.25"Dx72"Wx13"H Stack on Storage-Sliding	1	\$ 2,370.00	\$2,370.00
	\$(L1STD)	Grd L1 Standard Laminates			
	.C	Harvest			
	\$(L1STD)	Grd L1 Standard Laminates			
	.C	Harvest			
	.W	Wall Bracket			
36	M-DXLSLF230	DeXTR Support 2 drawer lateral: 24x30x29.5	1	\$ 2,355.00	\$2,355.00
	\$(L1STD)	Grd L1 Standard Laminates			
	.C	Harvest			
	\$(L1STD)	Grd L1 Standard Laminates			
	.C	Harvest			
	.MPR5	Champagne Metallic			
37	M-DXLT652424RBBF	DeXTR 24"Dx24"Wx65"H Personal Storage Tower rh	1	\$ 4,829.00	\$4,829.00
	\$(L1STD)	Grd L1 Standard Laminates			
	.C	Harvest			
	\$(L1STD)	Grd L1 Standard Laminates			
	.C	Harvest			
	.MPR5	Champagne Metallic			
38	M-HAREC3S2LTF	MXitUP 3 Stage 2 Leg Rectangle T Foot	1	\$ 2,347.00	\$2,347.00
	\$(P1)	P1 Paint Opts			

Not intended for installation or construction. Dealer has ultimate responsibility for accuracy and correctness of component counts & measurements. Dealer shall verify and confirm all site dimensions and suitability of products and applications consistent with published guidelines and applicable codes. All plans, drawings and specifications are property of Maxon Furniture, Inc. and may not be reproduced without written consent.



Line #	Part Number	Part Description	Qty	List	Ext List
	.MPT3	CLR: Muslin			
	.X	Standard Glide			
	.MEM	Memory Preset			
39	M-MXHAW2472S	MXitUP HA REC Worksurface w Stiffener 24Dx72W	1	\$ 766.00	\$766.00
	\$(L1STD)	Grd L1 Standard Laminate			
	.C	Harvest			
	.C	Harvest			
	.G	Grommet			
Group Total List:					\$16,823.00
Ext. Volume:	270.50			Project Total List:	\$51,580.00
Ext. Weight:	2,957.20				

Not intended for installation or construction. Dealer has ultimate responsibility for accuracy and correctness of component counts & measurements. Dealer shall verify and confirm all site dimensions and suitability of products and applications consistent with published guidelines and applicable codes. All plans, drawings and specifications are property of Maxon Furniture, Inc. and may not be reproduced without written consent.

MSP-20135 Marysville - 4th Floor HR Offices



Marysville Tower - 4th Fl Executive Support

Space Planning #: MSP-20051

Date: 12/21/2021

Notes:

Spin Alabaster (base panels) & Spin Heron (accent stacker) panel fabrics - Harvest laminate & edgeband - Muslin paint - Clear glass



Position to Win.

Pricing only valid for
November 2021 Price Book
K Beeler

Line #	Part Number	Part Description	Qty	List	Ext List
1	M-C1L	Univ Cantilevered Worksurf Bracket LH	5	\$ 89.00	\$445.00
	\$(P1)	P1 Paint Opto			
	.MPT3	Muslin			
2	M-C1R	Univ Cantilevered Worksurf Bracket RH	5	\$ 89.00	\$445.00
	\$(P1)	P1 Paint Opto			
	.MPT3	Muslin			
3	M-CTFB	Countertop Flat Bracket	2	\$ 48.00	\$96.00
4	M-CWB2	S1K Cantilever W/S Bracket Kit (2 pack)	10	\$ 43.00	\$430.00
	\$(P1)	P1 Paint Opto			
	.MPT3	Muslin			
5	M-CWB2	S1K Cantilever W/S Bracket Kit (2 pack)	3	\$ 43.00	\$129.00
	\$(P1)	P1 Paint Opto			
	.MPT3	Muslin			
6	M-DAB1	Worksurf Attaching Bracket (Each)	2	\$ 28.00	\$56.00
7	M-ED1	Duplex Outlet Circuit #1	9	\$ 71.00	\$639.00
	.EU	Muslin			

Not intended for installation or construction. Dealer has ultimate responsibility for accuracy and correctness of component counts & measurements. Dealer shall verify and confirm all site dimensions and suitability of products and applications consistent with published guidelines and applicable codes. All plans, drawings and specifications are property of Maxon Furniture, Inc. and may not be reproduced without written consent.

MSP-20051 Marysville Tower - 4th Fl Executive Support



Page 1 of 11

Line #	Part Number	Part Description	Qty	List	Ext List
8	M-ED4	Duplex Outlet Circuit #4 - Isolated/Dedicated	9	\$ 71.00	\$639.00
	.EU	Muslin			
9	M-EH24	Standard Single Block Duplex Harness 24W	1	\$ 300.00	\$300.00
10	M-EH30	Standard Double Block Duplex Harness 30W	3	\$ 332.00	\$996.00
11	M-EH42	Standard Double Block Duplex Harness 42W	13	\$ 384.00	\$4,992.00
12	M-EP24	Pass-Thru Harness 24W	3	\$ 209.00	\$627.00
13	M-EP30	Pass-Thru Harness 30W	3	\$ 231.00	\$693.00
14	M-EP42	Pass-Thru Harness 42W	1	\$ 250.00	\$250.00
15	M-EPF2	Power In-Feed through Side Receptacle	4	\$ 442.00	\$1,768.00
16	M-HAMREC3S2LTF	MXitUP Max 3 Stage 2 Leg T Foot	8	\$ 2,712.00	\$21,696.00
	\$(P1)	P1 Paint Opts			
	.MPT3	CLR: Muslin			
	.X	Standard Glide			
	.MEM	Memory Preset			
17	M-ICPSP281524BBFM	28Hx15Wx24D Support Ped Plinth	9	\$ 1,160.00	\$10,440.00
	.BX	Mtl Front BBF Recessed Plinth			
	.R	Recessed			
	\$(P1)	P1 Paint Opts			
	.MPT3	Muslin			
	\$(P1)	P1 Paint Opts			
	.NA	Match Case			

Not intended for installation or construction. Dealer has ultimate responsibility for accuracy and correctness of component counts & measurements. Dealer shall verify and confirm all site dimensions and suitability of products and applications consistent with published guidelines and applicable codes. All plans, drawings and specifications are property of Maxon Furniture, Inc. and may not be reproduced without written consent.



Line #	Part Number	Part Description	Qty	List	Ext List
	.X	Omit Lock			
18	M-ICPSP281524FFM	28Hx15Wx24D Support Ped Plinth Mtl Front FF	9	\$ 1,160.00	\$10,440.00
	.BX	Recessed Plinth			
	.R	Recessed			
	\$(P1)	P1 Paint Opts			
	.MPT3	Muslin			
	\$(P1)	P1 Paint Opts			
	.NA	Match Case			
	.X	Omit Lock			
19	M-LC	Lock Core Kit	1	\$ 52.00	\$52.00
	~	Undecided KEY NUMBER Option			
20	M-LC1S	Include Satin Removable Lock Core Kit	18	\$ 55.00	\$990.00
	~	Undecided KEY NUMBER Option			
21	M-LF236-R	Ridgeline Lateral- 2-Dwr 36W R-Pull	1	\$ 2,231.00	\$2,231.00
	\$(P1)	P1 Paint Opts			
	.MPT3	Muslin			
22	M-MDSL29	Universal Shared C-Leg	1	\$ 421.00	\$421.00
	\$(P1)	P1 Paint Opts			
	.MPT3	Muslin			
23	M-MXHAW3084S	MXitUP HA REC Worksurface w Stiffener 30Dx84W	8	\$ 884.00	\$7,072.00
	\$(L1STD)	Grd L1 Standard Laminate			
	.C	Harvest			
	.C	Harvest			

Not intended for installation or construction. Dealer has ultimate responsibility for accuracy and correctness of component counts & measurements. Dealer shall verify and confirm all site dimensions and suitability of products and applications consistent with published guidelines and applicable codes. All plans, drawings and specifications are property of Maxon Furniture, Inc. and may not be reproduced without written consent.

MSP-20051 Marysville Tower - 4th Fl Executive Support



Line #	Part Number	Part Description	Qty	List	Ext List
	.G	Grommet			
24	M-P51500-42	42.5" Base Panel Countertop Support	7	\$ 70.00	\$490.00
	\$(P1)	P1 Paint Opts			
	.MPT3	Muslin			
25	M-PFC42PLN	42.5H "L" Connector Post	6	\$ 178.00	\$1,068.00
	\$(P1)	P1 Paint Opts			
	.MPT3	Muslin			
26	M-PFC50PTN	50H "T" Connector Post	2	\$ 185.00	\$370.00
	\$(P1)	P1 Paint Opts			
	.MPT3	Muslin			
27	M-PFC65PLN	65H "L" Connector Post	7	\$ 222.00	\$1,554.00
	\$(P1)	P1 Paint Opts			
	.MPT3	Muslin			
28	M-PFC65PTN	65H "T" Connector Post	2	\$ 215.00	\$430.00
	\$(P1)	P1 Paint Opts			
	.MPT3	Muslin			
29	M-PFC65PXN	65H "X" Connector Post	1	\$ 208.00	\$208.00
	\$(P1)	P1 Paint Opts			
	.MPT3	Muslin			
30	M-PFCS1	Single Connector Strap	8	\$ 17.00	\$136.00
31	M-PFCSL	"L" Connector Strap	7	\$ 28.00	\$196.00

Not intended for installation or construction. Dealer has ultimate responsibility for accuracy and correctness of component counts & measurements. Dealer shall verify and confirm all site dimensions and suitability of products and applications consistent with published guidelines and applicable codes. All plans, drawings and specifications are property of Maxon Furniture, Inc. and may not be reproduced without written consent.



Line #	Part Number	Part Description	Qty	List	Ext List
32	M-PFCSS	Extended Straight Connector Strap "S"	3	\$ 34.00	\$102.00
33	M-PFXC-07HL	Prefix Variable Height Connector Kit 7.5H	4	\$ 107.00	\$428.00
	\$(P1)	P1 Paint Opts			
	.MPT3	Muslin			
34	M-PFXC-07HLS	Prefix In-Line Variable Height Finishing Kit 7.5H	4	\$ 107.00	\$428.00
	\$(P1)	P1 Paint Opts			
	.MPT3	Muslin			
35	M-PFXC-15HL	Prefix Variable Height Connector Kit 15H	4	\$ 113.00	\$452.00
	\$(P1)	P1 Paint Opts			
	.MPT3	Muslin			
36	M-PFXC-15HLS	Prefix In-Line Variable Height Finishing Kit 15H	2	\$ 113.00	\$226.00
	\$(P1)	P1 Paint Opts			
	.MPT3	Muslin			
37	M-PFXC-22HL	Prefix Variable Height Connector Kit 22.5H	6	\$ 131.00	\$786.00
	\$(P1)	P1 Paint Opts			
	.MPT3	Muslin			
38	M-PFXC-42E	Prefix Panel End Covers 42.5H	13	\$ 113.00	\$1,469.00
	\$(P1)	P1 Paint Opts			
	.MPT3	Muslin			
39	M-PFXC-42W	Wall Starter Kit for Panels 42.5H	1	\$ 248.00	\$248.00
	\$(P1)	P1 Paint Opts			
	.MPT3	Muslin			

Not intended for installation or construction. Dealer has ultimate responsibility for accuracy and correctness of component counts & measurements. Dealer shall verify and confirm all site dimensions and suitability of products and applications consistent with published guidelines and applicable codes. All plans, drawings and specifications are property of Maxon Furniture, Inc. and may not be reproduced without written consent.

MSP-20051 Marysville Tower - 4th Fl Executive Support



Line #	Part Number	Part Description	Qty	List	Ext List
40	M-PFXC-S	Prefix Straight Connector Kit	23	\$ 17.00	\$391.00
41	M-PFXM-4224FP	Prefix Tackable Panel 42.5H x 24W No TC	13	\$ 730.00	\$9,490.00
	\$(B)	Grd B Fab			
	.SPIN	Fabr: Spin			
	02	Alabaster			
	\$(P1)	P1 Paint Opts			
	.MPT3	Muslin			
42	M-PFXM-4230FP	Prefix Tackable Panel 42.5H x 30W No TC	13	\$ 740.00	\$9,620.00
	\$(B)	Grd B Fab			
	.SPIN	Fabr: Spin			
	02	Alabaster			
	\$(P1)	P1 Paint Opts			
	.MPT3	Muslin			
43	M-PFXM-4242FP	Prefix Tackable Panel 42.5H x 42W No TC	7	\$ 776.00	\$5,432.00
	\$(B)	Grd B Fab			
	.SPIN	Fabr: Spin			
	02	Alabaster			
	\$(P1)	P1 Paint Opts			
	.MPT3	Muslin			
44	M-PFXM-5024FP	Prefix Tackable Panel 50H x 24W No TC	4	\$ 784.00	\$3,136.00
	\$(B)	Grd B Fab			
	.SPIN	Fabr: Spin			
	02	Alabaster			
	\$(P1)	P1 Paint Opts			

Not intended for installation or construction. Dealer has ultimate responsibility for accuracy and correctness of component counts & measurements. Dealer shall verify and confirm all site dimensions and suitability of products and applications consistent with published guidelines and applicable codes. All plans, drawings and specifications are property of Maxon Furniture, Inc. and may not be reproduced without written consent.



Line #	Part Number	Part Description	Qty	List	Ext List
	.MPT3	Muslin			
45	M-PFXM-5030FP	Prefix Tackable Panel 50H x 30W No TC	12	\$ 817.00	\$9,804.00
	\$(B)	Grd B Fab			
	.SPIN	Fabr: Spin			
	02	Alabaster			
	\$(P1)	P1 Paint Opts			
	.MPT3	Muslin			
46	M-PFXM-5042FP	Prefix Tackable Panel 50H x 42W No TC	6	\$ 922.00	\$5,532.00
	\$(B)	Grd B Fab			
	.SPIN	Fabr: Spin			
	02	Alabaster			
	\$(P1)	P1 Paint Opts			
	.MPT3	Muslin			
47	M-PFXM-6542FP	Prefix Tackable Panel 65H x 42W No TC	2	\$ 956.00	\$1,912.00
	\$(B)	Grd B Fab			
	.SPIN	Fabr: Spin			
	02	Alabaster			
	\$(P1)	P1 Paint Opts			
	.MPT3	Muslin			
48	M-PFXS-1524F	Prefix Fabric Stacker 15H x 24W	4	\$ 565.00	\$2,260.00
	\$(B)	Grd B Fab			
	.SPIN	Fabr: Spin			
	13	Heron			

Not intended for installation or construction. Dealer has ultimate responsibility for accuracy and correctness of component counts & measurements. Dealer shall verify and confirm all site dimensions and suitability of products and applications consistent with published guidelines and applicable codes. All plans, drawings and specifications are property of Maxon Furniture, Inc. and may not be reproduced without written consent.

MSP-20051 Marysville Tower - 4th Fl Executive Support



Line #	Part Number	Part Description	Qty	List	Ext List
49	M-PFXS-1530F	Prefix Fabric Stacker 15H x 30W	8	\$ 609.00	\$4,872.00
	\$(B)	Grd B Fab			
	.SPIN	Fabr: Spin			
	13	Heron			
50	M-PFXS-1542F	Prefix Fabric Stacker 15H x 42W	2	\$ 706.00	\$1,412.00
	\$(B)	Grd B Fab			
	.SPIN	Fabr: Spin			
	13	Heron			
51	M-PFXS-1542G	Prefix Glass Stacker 15H x 42W	2	\$ 899.00	\$1,798.00
	\$(P1)	P1 Paint Opts			
	.MPT3	Muslin			
	.C	Clear			
52	M-PFXTC24	Prefix Panel Top Cap 24"W	17	\$ 57.00	\$969.00
	\$(P1)	P1 Paint Opts			
	.MPT3	Muslin			
53	M-PFXTC30	Prefix Panel Top Cap 30"W	25	\$ 71.00	\$1,775.00
	\$(P1)	P1 Paint Opts			
	.MPT3	Muslin			
54	M-PFXTC42	Prefix Panel Top Cap 42"W	15	\$ 108.00	\$1,620.00
	\$(P1)	P1 Paint Opts			
	.MPT3	Muslin			
55	M-PPGST	Prepare Support Gusset for large tops-Pair	2	\$ 289.00	\$578.00
	\$(P1)	P1 Paint Opts			

Not intended for installation or construction. Dealer has ultimate responsibility for accuracy and correctness of component counts & measurements. Dealer shall verify and confirm all site dimensions and suitability of products and applications consistent with published guidelines and applicable codes. All plans, drawings and specifications are property of Maxon Furniture, Inc. and may not be reproduced without written consent.



Line #	Part Number	Part Description	Qty	List	Ext List
	.MPT3	Muslin			
56	M-PPLF3072RT	Prepare 30" X 72" Racetrack Laminate-Flat Edge	2	\$ 1,035.00	\$2,070.00
	.X	Non-FSC Wood			
	\$(L1STD)	Grd L1 Standard Laminates			
	.C	Harvest			
	.C	Harvest			
	.CO	No Cutouts			
57	M-PPTMSG	Prepare T Base Medium Pair Seated Height w/Glides	2	\$ 1,038.00	\$2,076.00
	\$(P1)	P1 Paint Opts			
	.MPT3	Muslin			
58	M-PXCCT154242E	Corner Countertop 42Wx15D	1	\$ 1,251.00	\$1,251.00
	\$(L1STD)	L1 Standard Lam Opts			
	.C	Harvest			
	.C	Harvest			
59	M-PXCT1524E	Straight Countertop 24Wx15D	1	\$ 493.00	\$493.00
	\$(L1STD)	L1 Standard Lam Opts			
	.C	Harvest			
	.C	Harvest			
60	M-PXCT1572E	Straight Countertop 72Wx15D	1	\$ 685.00	\$685.00
	\$(L1STD)	L1 Standard Lam Opts			
	.C	Harvest			
	.C	Harvest			
61	M-PXHR30	Prefix Half Round Ext 30	1	\$ 830.00	\$830.00

Not intended for installation or construction. Dealer has ultimate responsibility for accuracy and correctness of component counts & measurements. Dealer shall verify and confirm all site dimensions and suitability of products and applications consistent with published guidelines and applicable codes. All plans, drawings and specifications are property of Maxon Furniture, Inc. and may not be reproduced without written consent.

MSP-20051 Marysville Tower - 4th Fl Executive Support



Line #	Part Number	Part Description	Qty	List	Ext List
	\$(L1STD)	L1 Standard Lam Opts			
	.C	Harvest			
	.C	Harvest			
62	M-URP3066	Univ Radius End Pen 30 x 66	1	\$ 988.00	\$988.00
	\$(L1STD)	L1 Standard Lam Opts			
	.C	Harvest			
	.C	Harvest			
63	M-URW2454	Univ Rec WS 24 x 54	8	\$ 552.00	\$4,416.00
	\$(L1STD)	L1 Standard Lam Opts			
	.C	Harvest			
	.C	Harvest			
64	M-URW2496	Univ Rec WS 24 x 96	1	\$ 874.00	\$874.00
	\$(L1STD)	L1 Standard Lam Opts			
	.C	Harvest			
	.C	Harvest			
65	M-URW3084	Univ Rec WS 30 x 84	1	\$ 840.00	\$840.00
	\$(L1STD)	L1 Standard Lam Opts			
	.C	Harvest			
	.C	Harvest			
66	M-USC	Univ Worksurface Support Column	2	\$ 301.00	\$602.00
	\$(P1)	P1 Paint Opts			
	.MPT3	Muslin			

Group Total List: \$150,164.00

Not intended for installation or construction. Dealer has ultimate responsibility for accuracy and correctness of component counts & measurements. Dealer shall verify and confirm all site dimensions and suitability of products and applications consistent with published guidelines and applicable codes. All plans, drawings and specifications are property of Maxon Furniture, Inc. and may not be reproduced without written consent.



Line #	Part Number	Part Description	Qty	List	Ext List
Ext. Volume:	548.92			Project Total List:	\$150,164.00
Ext. Weight:	5,963.12				

Not intended for installation or construction. Dealer has ultimate responsibility for accuracy and correctness of component counts & measurements. Dealer shall verify and confirm all site dimensions and suitability of products and applications consistent with published guidelines and applicable codes. All plans, drawings and specifications are property of Maxon Furniture, Inc. and may not be reproduced without written consent.

MSP-20051 Marysville Tower - 4th Fl Executive Support



Marysville - 1st Floor Utility Billing

Space Planning #: MSP-20146

Date: 1/23/2022

Notes:

Spin Alabaster (main) and Spin Pool (accent) panel fabrics -
Harvest laminate & edgeband - Muslin paint - Clear glass

maxon[®]
Your Project is Our Purpose

Pricing only valid for
November 2021 Price Book
K Beeler

Line #	Part Number	Part Description	Qty	List	Ext List
UB Front Counter					
1	M-DAB1	Worksurf Attaching Bracket (Each)	2	\$ 28.00	\$56.00
2	M-EH24	Standard Single Block Duplex Harness 24W	1	\$ 300.00	\$300.00
3	M-EH30	Standard Double Block Duplex Harness 30W	2	\$ 332.00	\$664.00
4	M-EPF2	Power In-Feed through Side Receptacle	1	\$ 442.00	\$442.00
5	M-PFCSL	"L" Connector Strap	2	\$ 28.00	\$56.00
6	M-PFCST	"T" Connector Strap	1	\$ 34.00	\$34.00
7	M-PFXC-S	Prefix Straight Connector Kit	2	\$ 17.00	\$34.00
8	M-PPSC60	Prepare External Table Top Sup Chnl 48"	2	\$ 308.00	\$616.00
9	M-ED1	Duplex Outlet Circuit #1	2	\$ 71.00	\$142.00
	.EU	Muslin			
10	M-ED4	Duplex Outlet Circuit #4 - Isolated/Dedicated	2	\$ 71.00	\$142.00
	.EU	Muslin			
11	M-LC1S	Include Satin Removable Lock Core Kit	4	\$ 55.00	\$220.00

Not intended for installation or construction. Dealer has ultimate responsibility for accuracy and correctness of component counts & measurements. Dealer shall verify and confirm all site dimensions and suitability of products and applications consistent with published guidelines and applicable codes. All plans, drawings and specifications are property of Maxon Furniture, Inc. and may not be reproduced without written consent.

MSP-20146 Marysville - 1st Floor Utility Billing



Page 1 of 13

Line #	Part Number	Part Description	Qty	List	Ext List
	~	Undecided KEY NUMBER Option			
12	M-C1L	Univ Cantilevered Worksurf Bracket LH	1	\$ 89.00	\$89.00
	\$(P1)	P1 Paint Opts			
	.MPT3	Muslin			
13	M-C1R	Univ Cantilevered Worksurf Bracket RH	1	\$ 89.00	\$89.00
	\$(P1)	P1 Paint Opts			
	.MPT3	Muslin			
14	M-CWB2	S1K Cantilever W/S Bracket Kit (2 pack)	1	\$ 43.00	\$43.00
	\$(P1)	P1 Paint Opts			
	.MPT3	Muslin			
15	M-CWB2	S1K Cantilever W/S Bracket Kit (2 pack)	4	\$ 43.00	\$172.00
	\$(P1)	P1 Paint Opts			
	.MPT3	Muslin			
16	M-PFC42PLN	42.5H "L" Connector Post	2	\$ 178.00	\$356.00
	\$(P1)	P1 Paint Opts			
	.MPT3	Muslin			
17	M-PFC42PTN	42.5H "T" Connector Post	1	\$ 170.00	\$170.00
	\$(P1)	P1 Paint Opts			
	.MPT3	Muslin			
18	M-PFXC-42E	Prefix Panel End Covers 42.5H	3	\$ 113.00	\$339.00
	\$(P1)	P1 Paint Opts			
	.MPT3	Muslin			

Not intended for installation or construction. Dealer has ultimate responsibility for accuracy and correctness of component counts & measurements. Dealer shall verify and confirm all site dimensions and suitability of products and applications consistent with published guidelines and applicable codes. All plans, drawings and specifications are property of Maxon Furniture, Inc. and may not be reproduced without written consent.



Line #	Part Number	Part Description	Qty	List	Ext List
19	M-PFXTC24	Prefix Panel Top Cap 24"W	1	\$ 57.00	\$57.00
	\$(P1)	P1 Paint Opts			
	.MPT3	Muslin			
20	M-PFXTC30	Prefix Panel Top Cap 30"W	4	\$ 71.00	\$284.00
	\$(P1)	P1 Paint Opts			
	.MPT3	Muslin			
21	M-PFXTC72	Prefix Panel Top Cap 72"W	2	\$ 140.00	\$280.00
	\$(P1)	P1 Paint Opts			
	.MPT3	Muslin			
22	M-URW2454	Univ Rec WS 24 x 54	2	\$ 552.00	\$1,104.00
	\$(L1STD)	L1 Standard Lam Opts			
	.C	Harvest			
	.C	Harvest			
23	M-URW3072	Univ Rec WS 30 x 72	2	\$ 738.00	\$1,476.00
	\$(L1STD)	L1 Standard Lam Opts			
	.C	Harvest			
	.C	Harvest			
24	M-PFXM-4224FP	Prefix Tackable Panel 42.5H x 24W No TC	1	\$ 730.00	\$730.00
	\$(B)	Grd B Fab			
	.SPIN	Fabr: Spin			
	02	Alabaster			
	\$(P1)	P1 Paint Opts			
	.MPT3	Muslin			

Not intended for installation or construction. Dealer has ultimate responsibility for accuracy and correctness of component counts & measurements. Dealer shall verify and confirm all site dimensions and suitability of products and applications consistent with published guidelines and applicable codes. All plans, drawings and specifications are property of Maxon Furniture, Inc. and may not be reproduced without written consent.

MSP-20146 Marysville - 1st Floor Utility Billing



Line #	Part Number	Part Description	Qty	List	Ext List
25	M-PFXM-4230FP	Prefix Tackable Panel 42.5H x 30W No TC	4	\$ 740.00	\$2,960.00
	\$(B)	Grd B Fab			
	.SPIN	Fabr: Spin			
	02	Alabaster			
	\$(P1)	P1 Paint Opts			
	.MPT3	Muslin			
26	M-PFXM-4272FP	Prefix Tackable Panel 42.5H x 72W No TC	2	\$ 1,076.00	\$2,152.00
	\$(B)	Grd B Fab			
	.SPIN	Fabr: Spin			
	02	Alabaster			
	\$(P1)	P1 Paint Opts			
	.MPT3	Muslin			
27	M-ICPSP281518FFM	28Hx15Wx18D Support Ped Plinth Mtl Front FF	2	\$ 1,125.00	\$2,250.00
	.BX	Recessed Plinth			
	.R	Recessed			
	\$(P1)	P1 Paint Opts			
	.MPT3	Muslin			
	\$(P1)	P1 Paint Opts			
	.NA	Match Case			
	.L	Standard Lock			
28	M-ICPSP281524BBFM	28Hx15Wx24D Support Ped Plinth Mtl Front BBF	2	\$ 1,182.00	\$2,364.00
	.BX	Recessed Plinth			
	.R	Recessed			
	\$(P1)	P1 Paint Opts			

Not intended for installation or construction. Dealer has ultimate responsibility for accuracy and correctness of component counts & measurements. Dealer shall verify and confirm all site dimensions and suitability of products and applications consistent with published guidelines and applicable codes. All plans, drawings and specifications are property of Maxon Furniture, Inc. and may not be reproduced without written consent.



Line #	Part Number	Part Description	Qty	List	Ext List
	.MPT3	Muslin			
	\$(P1)	P1 Paint Opts			
	.NA	Match Case			
	.L	Standard Lock			
Group Total List:					\$17,621.00

Utility Billing

29	M-EH24	Standard Single Block Duplex Harness 24W	5	\$ 300.00	\$1,500.00
30	M-EH30	Standard Double Block Duplex Harness 30W	6	\$ 332.00	\$1,992.00
31	M-EP30	Pass-Thru Harness 30W	3	\$ 231.00	\$693.00
32	M-EP36	Pass-Thru Harness 36W	2	\$ 241.00	\$482.00
33	M-EPF2	Power In-Feed through Side Receptacle	2	\$ 442.00	\$884.00
34	M-PFCS1	Single Connector Strap	8	\$ 17.00	\$136.00
35	M-PFCSL	"L" Connector Strap	3	\$ 28.00	\$84.00
36	M-PFCST	"T" Connector Strap	2	\$ 34.00	\$68.00
37	M-PFCSX	"X" Connector Strap	2	\$ 41.00	\$82.00
38	M-PFXC-S	Prefix Straight Connector Kit	21	\$ 17.00	\$357.00
39	M-ED1	Duplex Outlet Circuit #1	8	\$ 71.00	\$568.00
	.EU	Muslin			
40	M-ED4	Duplex Outlet Circuit #4 - Isolated/Dedicated	8	\$ 71.00	\$568.00

Not intended for installation or construction. Dealer has ultimate responsibility for accuracy and correctness of component counts & measurements. Dealer shall verify and confirm all site dimensions and suitability of products and applications consistent with published guidelines and applicable codes. All plans, drawings and specifications are property of Maxon Furniture, Inc. and may not be reproduced without written consent.

MSP-20146 Marysville - 1st Floor Utility Billing



Line #	Part Number	Part Description	Qty	List	Ext List
	.EU	Muslin			
41	M-LC	Lock Core Kit	8	\$ 52.00	\$416.00
	~	Undecided KEY NUMBER Option			
42	M-LC1S	Include Satin Removable Lock Core Kit	16	\$ 55.00	\$880.00
	~	Undecided KEY NUMBER Option			
43	M-C1L	Univ Cantilevered Worksurf Bracket LH	5	\$ 89.00	\$445.00
	\$(P1)	P1 Paint Opts			
	.MPT3	Muslin			
44	M-C1R	Univ Cantilevered Worksurf Bracket RH	3	\$ 89.00	\$267.00
	\$(P1)	P1 Paint Opts			
	.MPT3	Muslin			
45	M-CWB2	S1K Cantilever W/S Bracket Kit (2 pack)	6	\$ 43.00	\$258.00
	\$(P1)	P1 Paint Opts			
	.MPT3	Muslin			
46	M-HALRETL	HAT to Panel Bracket T-leg LH	5	\$ 222.00	\$1,110.00
	\$(P1)	P1 Paint Opts			
	.MPT3	Muslin			
47	M-HALRETR	HAT to Panel Bracket T-leg RH	3	\$ 222.00	\$666.00
	\$(P1)	P1 Paint Opts			
	.MPT3	Muslin			
48	M-PFC42PLN	42.5H "L" Connector Post	2	\$ 178.00	\$356.00
	\$(P1)	P1 Paint Opts			

Not intended for installation or construction. Dealer has ultimate responsibility for accuracy and correctness of component counts & measurements. Dealer shall verify and confirm all site dimensions and suitability of products and applications consistent with published guidelines and applicable codes. All plans, drawings and specifications are property of Maxon Furniture, Inc. and may not be reproduced without written consent.



Line #	Part Number	Part Description	Qty	List	Ext List
	.MPT3	Muslin			
49	M-PFC50PLN	50H "L" Connector Post	1	\$ 193.00	\$193.00
	\$(P1)	P1 Paint Opts			
	.MPT3	Muslin			
50	M-PFC65PLN	65H "L" Connector Post	7	\$ 222.00	\$1,554.00
	\$(P1)	P1 Paint Opts			
	.MPT3	Muslin			
51	M-PFC65PTN	65H "T" Connector Post	3	\$ 215.00	\$645.00
	\$(P1)	P1 Paint Opts			
	.MPT3	Muslin			
52	M-PFC65PXN	65H "X" Connector Post	2	\$ 208.00	\$416.00
	\$(P1)	P1 Paint Opts			
	.MPT3	Muslin			
53	M-PFXC-07HL	Prefix Variable Height Connector Kit 7.5H	1	\$ 107.00	\$107.00
	\$(P1)	P1 Paint Opts			
	.MPT3	Muslin			
54	M-PFXC-15HL	Prefix Variable Height Connector Kit 15H	5	\$ 113.00	\$565.00
	\$(P1)	P1 Paint Opts			
	.MPT3	Muslin			
55	M-PFXC-22HL	Prefix Variable Height Connector Kit 22.5H	3	\$ 131.00	\$393.00
	\$(P1)	P1 Paint Opts			
	.MPT3	Muslin			

Not intended for installation or construction. Dealer has ultimate responsibility for accuracy and correctness of component counts & measurements. Dealer shall verify and confirm all site dimensions and suitability of products and applications consistent with published guidelines and applicable codes. All plans, drawings and specifications are property of Maxon Furniture, Inc. and may not be reproduced without written consent.

MSP-20146 Marysville - 1st Floor Utility Billing



Line #	Part Number	Part Description	Qty	List	Ext List
56	M-PFXC-42E	Prefix Panel End Covers 42.5H	2	\$ 113.00	\$226.00
	\$(P1)	P1 Paint Opts			
	.MPT3	Muslin			
57	M-PFXC-50E	Prefix Panel End Covers 50H	6	\$ 118.00	\$708.00
	\$(P1)	P1 Paint Opts			
	.MPT3	Muslin			
58	M-PFXC-65E	Prefix Panel End Covers 65H	3	\$ 131.00	\$393.00
	\$(P1)	P1 Paint Opts			
	.MPT3	Muslin			
59	M-PFXTC24	Prefix Panel Top Cap 24"W	8	\$ 57.00	\$456.00
	\$(P1)	P1 Paint Opts			
	.MPT3	Muslin			
60	M-PFXTC30	Prefix Panel Top Cap 30"W	18	\$ 71.00	\$1,278.00
	\$(P1)	P1 Paint Opts			
	.MPT3	Muslin			
61	M-PFXTC36	Prefix Panel Top Cap 36"W	16	\$ 93.00	\$1,488.00
	\$(P1)	P1 Paint Opts			
	.MPT3	Muslin			
62	M-PFXTC48	Prefix Panel Top Cap 48"W	3	\$ 118.00	\$354.00
	\$(P1)	P1 Paint Opts			
	.MPT3	Muslin			
63	M-UOSS24	Univ Open Straight Shelf 24W	8	\$ 382.00	\$3,056.00

Not intended for installation or construction. Dealer has ultimate responsibility for accuracy and correctness of component counts & measurements. Dealer shall verify and confirm all site dimensions and suitability of products and applications consistent with published guidelines and applicable codes. All plans, drawings and specifications are property of Maxon Furniture, Inc. and may not be reproduced without written consent.



Line #	Part Number	Part Description	Qty	List	Ext List
	\$(P1)	P1 Paint Opts			
	.MPT3	Muslin			
64	M-USOH1530F	Univ OH Cab 15Hx30W Flipper Pnt Door	8	\$ 792.00	\$6,336.00
	\$(P1)	P1 Paint Opts			
	.MPT3	Muslin			
65	M-PFXS-1524F	Prefix Fabric Stacker 15H x 24W	5	\$ 565.00	\$2,825.00
	\$(B)	Grd B Fab			
	.SPIN	Fabr: Spin			
	11	Pool			
66	M-PFXS-1524G	Prefix Glass Stacker 15H x 24W	3	\$ 694.00	\$2,082.00
	\$(P1)	P1 Paint Opts			
	.MPT3	Muslin			
	.C	Clear			
67	M-PFXS-1530F	Prefix Fabric Stacker 15H x 30W	4	\$ 609.00	\$2,436.00
	\$(B)	Grd B Fab			
	.SPIN	Fabr: Spin			
	11	Pool			
68	M-PFXS-1530G	Prefix Glass Stacker 15H x 30W	9	\$ 784.00	\$7,056.00
	\$(P1)	P1 Paint Opts			
	.MPT3	Muslin			
	.C	Clear			
69	M-PFXS-1536G	Prefix Glass Stacker 15H x 36W	10	\$ 809.00	\$8,090.00
	\$(P1)	P1 Paint Opts			

Not intended for installation or construction. Dealer has ultimate responsibility for accuracy and correctness of component counts & measurements. Dealer shall verify and confirm all site dimensions and suitability of products and applications consistent with published guidelines and applicable codes. All plans, drawings and specifications are property of Maxon Furniture, Inc. and may not be reproduced without written consent.

MSP-20146 Marysville - 1st Floor Utility Billing



Line #	Part Number	Part Description	Qty	List	Ext List
	.MPT3	Muslin			
	.C	Clear			
70	M-PFXS-1548F	Prefix Fabric Stacker 15H x 48W	3	\$ 757.00	\$2,271.00
	\$(B)	Grd B Fab			
	.SPIN	Fabr: Spin			
	11	Pool			
71	M-URW2454	Univ Rec WS 24 x 54	8	\$ 552.00	\$4,416.00
	\$(L1STD)	L1 Standard Lam Opts			
	.C	Harvest			
	.C	Harvest			
72	M-HAREC3S2LTF	MXitUP 3 Stage 2 Leg Rectangle T Foot	8	\$ 2,347.00	\$18,776.00
	\$(P1)	P1 Paint Opts			
	.MPT3	CLR: Muslin			
	.X	Standard Glide			
	.MEM	Memory Preset			
73	M-MXHAW3072S	MXitUP HA REC Worksurface w Stiffener 30Dx72W	8	\$ 830.00	\$6,640.00
	\$(L1STD)	Grd L1 Standard Laminate			
	.C	Harvest			
	.C	Harvest			
	.G	Grommet			
74	M-PFXM-3530FP	Prefix Tackable Panel 35H x 30W No TC	6	\$ 650.00	\$3,900.00
	\$(B)	Grd B Fab			
	.SPIN	Fabr: Spin			

Not intended for installation or construction. Dealer has ultimate responsibility for accuracy and correctness of component counts & measurements. Dealer shall verify and confirm all site dimensions and suitability of products and applications consistent with published guidelines and applicable codes. All plans, drawings and specifications are property of Maxon Furniture, Inc. and may not be reproduced without written consent.



Line #	Part Number	Part Description	Qty	List	Ext List
	02	Alabaster			
	\$(P1)	P1 Paint Opts			
	.MPT3	Muslin			
75	M-PFXM-4230FP	Prefix Tackable Panel 42.5H x 30W No TC	2	\$ 740.00	\$1,480.00
	\$(B)	Grd B Fab			
	.SPIN	Fabr: Spin			
	02	Alabaster			
	\$(P1)	P1 Paint Opts			
	.MPT3	Muslin			
76	M-PFXM-4236FP	Prefix Tackable Panel 42.5H x 36W No TC	6	\$ 754.00	\$4,524.00
	\$(B)	Grd B Fab			
	.SPIN	Fabr: Spin			
	02	Alabaster			
	\$(P1)	P1 Paint Opts			
	.MPT3	Muslin			
77	M-PFXM-5024FP	Prefix Tackable Panel 50H x 24W No TC	8	\$ 784.00	\$6,272.00
	\$(B)	Grd B Fab			
	.SPIN	Fabr: Spin			
	02	Alabaster			
	\$(P1)	P1 Paint Opts			
	.MPT3	Muslin			
78	M-PFXM-5030FP	Prefix Tackable Panel 50H x 30W No TC	7	\$ 817.00	\$5,719.00
	\$(B)	Grd B Fab			
	.SPIN	Fabr: Spin			

Not intended for installation or construction. Dealer has ultimate responsibility for accuracy and correctness of component counts & measurements. Dealer shall verify and confirm all site dimensions and suitability of products and applications consistent with published guidelines and applicable codes. All plans, drawings and specifications are property of Maxon Furniture, Inc. and may not be reproduced without written consent.



Line #	Part Number	Part Description	Qty	List	Ext List
	02	Alabaster			
	\$(P1)	P1 Paint Opts			
	.MPT3	Muslin			
79	M-PFXM-5036FP	Prefix Tackable Panel 50H x 36W No TC	10	\$ 871.00	\$8,710.00
	\$(B)	Grd B Fab			
	.SPIN	Fabr: Spin			
	02	Alabaster			
	\$(P1)	P1 Paint Opts			
	.MPT3	Muslin			
80	M-PFXM-5048FP	Prefix Tackable Panel 50H x 48W No TC	3	\$ 975.00	\$2,925.00
	\$(B)	Grd B Fab			
	.SPIN	Fabr: Spin			
	02	Alabaster			
	\$(P1)	P1 Paint Opts			
	.MPT3	Muslin			
81	M-PFXM-6530FP	Prefix Tackable Panel 65H x 30W No TC	3	\$ 859.00	\$2,577.00
	\$(B)	Grd B Fab			
	.SPIN	Fabr: Spin			
	02	Alabaster			
	\$(P1)	P1 Paint Opts			
	.MPT3	Muslin			
82	M-ICPSP281524BBFM	28Hx15Wx24D Support Ped Plinth Mtl Front BBF	8	\$ 1,182.00	\$9,456.00
	.BX	Recessed Plinth			
	.R	Recessed			

Not intended for installation or construction. Dealer has ultimate responsibility for accuracy and correctness of component counts & measurements. Dealer shall verify and confirm all site dimensions and suitability of products and applications consistent with published guidelines and applicable codes. All plans, drawings and specifications are property of Maxon Furniture, Inc. and may not be reproduced without written consent.



Line #	Part Number	Part Description	Qty	List	Ext List
	\$(P1)	P1 Paint Opts			
	.MPT3	Muslin			
	\$(P1)	P1 Paint Opts			
	.NA	Match Case			
	.L	Standard Lock			
83	M-ICPSP281524FFM	28Hx15Wx24D Support Ped Plinth	8	\$ 1,182.00	\$9,456.00
		Mtl Front FF			
	.BX	Recessed Plinth			
	.R	Recessed			
	\$(P1)	P1 Paint Opts			
	.MPT3	Muslin			
	\$(P1)	P1 Paint Opts			
	.NA	Match Case			
	.L	Standard Lock			
				Group Total List:	\$139,591.00
Ext. Volume:	573.04			Project Total List:	\$157,212.00
Ext. Weight:	5,840.96				

Not intended for installation or construction. Dealer has ultimate responsibility for accuracy and correctness of component counts & measurements. Dealer shall verify and confirm all site dimensions and suitability of products and applications consistent with published guidelines and applicable codes. All plans, drawings and specifications are property of Maxon Furniture, Inc. and may not be reproduced without written consent.

MSP-20146 Marysville - 1st Floor Utility Billing



Marysville - 3rd Floor IS Offices

Space Planning #: MSP-20149

Date: 1/24/2022

Notes:

Harvest laminate - Harvest edgeband - Muslin paint - Champagne
Metallic paint (DeXTR drawer pulls)



Pricing only valid for
November 2021 Price Book
K Beeler

Line #	Part Number	Part Description	Qty	List	Ext List
Office B					
1	M-DXLEP24	DeXTR 24"D x 28" End Panel Support	1	\$ 458.00	\$458.00
	\$(L1STD)	Grd L1 Standard Laminates			
	.C	Harvest			
2	M-DXLMP4028FP	DeXTR 40"W x 28"H Full Length Lam Modesty Panel	1	\$ 537.00	\$537.00
	\$(L1STD)	Grd L1 Standard Laminates			
	.C	Harvest			
3	M-LC1S	Include Satin Removable Lock Core Kit	2	\$ 55.00	\$110.00
	~	Undecided KEY NUMBER Option			
4	M-URW3072N	Univ Rec WS 30 x 72 No Grommets	1	\$ 738.00	\$738.00
	\$(L1STD)	L1 Standard Lam Opts			
	.C	Harvest			
	.C	Harvest			
5	M-DXL2428BBF	DeXTR 24"D x 28" Box/Box/File Pedestal Support	1	\$ 1,318.00	\$1,318.00
	\$(L1STD)	Grd L1 Standard Laminates			
	.C	Harvest			
	\$(L1STD)	Grd L1 Standard Laminates			

Not intended for installation or construction. Dealer has ultimate responsibility for accuracy and correctness of component counts & measurements. Dealer shall verify and confirm all site dimensions and suitability of products and applications consistent with published guidelines and applicable codes. All plans, drawings and specifications are property of Maxon Furniture, Inc. and may not be reproduced without written consent.

MSP-20149 Marysville - 3rd Floor IS Offices



Page 1 of 6

Line #	Part Number	Part Description	Qty	List	Ext List
	.C	Harvest			
	.MPR5	Champagne Metallic			
6	M-DXLT652424RBBF	DeXTR 24"Dx24"Wx65"H Personal Storage Tower rh	1	\$ 4,829.00	\$4,829.00
	\$(L1STD)	Grd L1 Standard Laminates			
	.C	Harvest			
	\$(L1STD)	Grd L1 Standard Laminates			
	.C	Harvest			
	.MPR5	Champagne Metallic			
7	M-HAREC3S2LTF	MXitUP 3 Stage 2 Leg Rectangle T Foot	1	\$ 2,347.00	\$2,347.00
	\$(P1)	P1 Paint Opt			
	.MPT3	CLR: Muslin			
	.X	Standard Glide			
	.MEM	Memory Preset			
8	M-MXHAW2466S	MXitUP HA REC Worksurface w Stiffener 24Dx66W	1	\$ 699.00	\$699.00
	\$(L1STD)	Grd L1 Standard Laminate			
	.C	Harvest			
	.C	Harvest			
	.G	Grommet			
Group Total List:					<u>\$11,036.00</u>

Office C

9	M-DXLEP24	DeXTR 24"D x 28" End Panel Support	1	\$ 458.00	\$458.00
	\$(L1STD)	Grd L1 Standard Laminates			
	.C	Harvest			

Not intended for installation or construction. Dealer has ultimate responsibility for accuracy and correctness of component counts & measurements. Dealer shall verify and confirm all site dimensions and suitability of products and applications consistent with published guidelines and applicable codes. All plans, drawings and specifications are property of Maxon Furniture, Inc. and may not be reproduced without written consent.



MSP-20149 Marysville - 3rd Floor IS Offices

Line #	Part Number	Part Description	Qty	List	Ext List
10	M-DXLMP4028FP	DeXTR 40"W x 28"H Full Length Lam Modesty Panel	1	\$ 537.00	\$537.00
	\$(L1STD)	Grd L1 Standard Laminates			
	.C	Harvest			
11	M-LC1S	Include Satin Removable Lock Core Kit	2	\$ 55.00	\$110.00
	~	Undecided KEY NUMBER Option			
12	M-URW3072N	Univ Rec WS 30 x 72 No Grommets	1	\$ 738.00	\$738.00
	\$(L1STD)	L1 Standard Lam Opts			
	.C	Harvest			
	.C	Harvest			
13	M-DXL2428BBF	DeXTR 24"D x 28" Box/Box/File Pedestal Support	1	\$ 1,318.00	\$1,318.00
	\$(L1STD)	Grd L1 Standard Laminates			
	.C	Harvest			
	\$(L1STD)	Grd L1 Standard Laminates			
	.C	Harvest			
	.MPR5	Champagne Metallic			
14	M-DXLT652424RBBF	DeXTR 24"Dx24"Wx65"H Personal Storage Tower rh	1	\$ 4,829.00	\$4,829.00
	\$(L1STD)	Grd L1 Standard Laminates			
	.C	Harvest			
	\$(L1STD)	Grd L1 Standard Laminates			
	.C	Harvest			
	.MPR5	Champagne Metallic			
15	M-HAREC3S2LTF	MXitUP 3 Stage 2 Leg Rectangle T Foot	1	\$ 2,347.00	\$2,347.00
	\$(P1)	P1 Paint Opts			

Not intended for installation or construction. Dealer has ultimate responsibility for accuracy and correctness of component counts & measurements. Dealer shall verify and confirm all site dimensions and suitability of products and applications consistent with published guidelines and applicable codes. All plans, drawings and specifications are property of Maxon Furniture, Inc. and may not be reproduced without written consent.

MSP-20149 Marysville - 3rd Floor IS Offices



Line #	Part Number	Part Description	Qty	List	Ext List
	.MPT3	CLR: Muslin			
	.X	Standard Glide			
	.MEM	Memory Preset			
16	M-MXHAW2472S	MXitUP HA REC Worksurface w Stiffener 24Dx72W	1	\$ 766.00	\$766.00
	\$(L1STD)	Grd L1 Standard Laminate			
	.C	Harvest			
	.C	Harvest			
	.G	Grommet			
Group Total List:					\$11,103.00

Office D

17	M-DXLEP24	DeXTR 24"D x 28" End Panel Support	1	\$ 458.00	\$458.00
	\$(L1STD)	Grd L1 Standard Laminates			
	.C	Harvest			
18	M-DXLMP4028FP	DeXTR 40"W x 28"H Full Length Lam Modesty Panel	1	\$ 537.00	\$537.00
	\$(L1STD)	Grd L1 Standard Laminates			
	.C	Harvest			
19	M-LC1S	Include Satin Removable Lock Core Kit	2	\$ 55.00	\$110.00
	~	Undecided KEY NUMBER Option			
20	M-URW3072N	Univ Rec WS 30 x 72 No Grommets	1	\$ 738.00	\$738.00
	\$(L1STD)	L1 Standard Lam Opts			
	.C	Harvest			
	.C	Harvest			

Not intended for installation or construction. Dealer has ultimate responsibility for accuracy and correctness of component counts & measurements. Dealer shall verify and confirm all site dimensions and suitability of products and applications consistent with published guidelines and applicable codes. All plans, drawings and specifications are property of Maxon Furniture, Inc. and may not be reproduced without written consent.



MSP-20149 Marysville - 3rd Floor IS Offices

Page 4 of 6

Line #	Part Number	Part Description	Qty	List	Ext List
21	M-DXL2428BBF	DeXTR 24"D x 28" Box/Box/File Pedestal Support	1	\$ 1,318.00	\$1,318.00
	\$(L1STD)	Grd L1 Standard Laminates			
	.C	Harvest			
	\$(L1STD)	Grd L1 Standard Laminates			
	.C	Harvest			
	.MPR5	Champagne Metallic			
22	M-DXLT652424RBBF	DeXTR 24"Dx24"Wx65"H Personal Storage Tower rh	1	\$ 4,829.00	\$4,829.00
	\$(L1STD)	Grd L1 Standard Laminates			
	.C	Harvest			
	\$(L1STD)	Grd L1 Standard Laminates			
	.C	Harvest			
	.MPR5	Champagne Metallic			
23	M-HAREC3S2LTF	MXitUP 3 Stage 2 Leg Rectangle T Foot	1	\$ 2,347.00	\$2,347.00
	\$(P1)	P1 Paint Opts			
	.MPT3	CLR: Muslin			
	.X	Standard Glide			
	.MEM	Memory Preset			
24	M-MXHAW2472S	MXitUP HA REC Worksurface w Stiffener 24Dx72W	1	\$ 766.00	\$766.00
	\$(L1STD)	Grd L1 Standard Laminate			
	.C	Harvest			
	.C	Harvest			
	.G	Grommet			
Group Total List:					\$11,103.00

Not intended for installation or construction. Dealer has ultimate responsibility for accuracy and correctness of component counts & measurements. Dealer shall verify and confirm all site dimensions and suitability of products and applications consistent with published guidelines and applicable codes. All plans, drawings and specifications are property of Maxon Furniture, Inc. and may not be reproduced without written consent.

MSP-20149 Marysville - 3rd Floor IS Offices



Line #	Part Number	Part Description	Qty	List	Ext List
Ext. Volume:	170.00			Project Total List:	\$33,242.00
Ext. Weight:	1,945.95				

Not intended for installation or construction. Dealer has ultimate responsibility for accuracy and correctness of component counts & measurements. Dealer shall verify and confirm all site dimensions and suitability of products and applications consistent with published guidelines and applicable codes. All plans, drawings and specifications are property of Maxon Furniture, Inc. and may not be reproduced without written consent.



MSP-20149 Marysville - 3rd Floor IS Offices

Marysville Conference Rooms

Space Planning #: MSP-20147

Date: 1/23/2022

Notes:

Harvest laminate & edgeband - DeXTR drawer pulls are
Champagne Metallic

maxon
Your Project is Our Purpose

Pricing only valid for
November 2021 Price Book
K Beeler

Line #	Part Number	Part Description	Qty	List	Ext List
1st Fl Large Conf Room					
1	M-PPGNB	Prepare 2 PACK Ganging Bracket	1	\$ 68.00	\$68.00
2	M-URW2472N	Univ Rec WS 24 x 72 No Grommets	2	\$ 684.00	\$1,368.00
	\$(L1STD)	L1 Standard Lam Opts			
	.C	Harvest			
	.C	Harvest			
3	M-PPPL96	Prepare Laminate Hallow Panel Base for 96" Wide	2	\$ 4,331.00	\$8,662.00
	.X	Non-FSC Wood			
	\$(L1STD)	Grd L1 Standard Laminates			
	.C	Harvest			
	.C	Harvest			
4	M-DXLSC36	DeXTR high storage cab: 24x36x29.5	4	\$ 1,963.00	\$7,852.00
	\$(L1STD)	Grd L1 Standard Laminates			
	.C	Harvest			
	\$(L1STD)	Grd L1 Standard Laminates			
	.C	Harvest			
	.MPR5	Champagne Metallic			

Not intended for installation or construction. Dealer has ultimate responsibility for accuracy and correctness of component counts & measurements. Dealer shall verify and confirm all site dimensions and suitability of products and applications consistent with published guidelines and applicable codes. All plans, drawings and specifications are property of Maxon Furniture, Inc. and may not be reproduced without written consent.

MSP-20147 Marysville Conference Rooms



Page 1 of 6

Line #	Part Number	Part Description	Qty	List	Ext List
5	M-PPLF5496RE	Prepare 54" X 96" Rectangle Laminate-Flat Edge	2	\$ 2,281.00	\$4,562.00
	.X	Non-FSC Wood			
	\$(L1STD)	Grd L1 Standard Laminates			
	.C	Harvest			
	.C	Harvest			
	.CO	No Cutouts			
Group Total List:					\$22,512.00

2nd Fl Chamber Conf Room

6	M-URW2472N	Univ Rec WS 24 x 72 No Grommets	1	\$ 684.00	\$684.00
	\$(L1STD)	L1 Standard Lam Opts			
	.C	Harvest			
	.C	Harvest			
7	M-PPPL96	Prepare Laminate Hallow Panel Base for 96" Wide	1	\$ 4,331.00	\$4,331.00
	.X	Non-FSC Wood			
	\$(L1STD)	Grd L1 Standard Laminates			
	.C	Harvest			
	.C	Harvest			
8	M-DXLSC36	DeXTR high storage cab: 24x36x29.5	2	\$ 1,963.00	\$3,926.00
	\$(L1STD)	Grd L1 Standard Laminates			
	.C	Harvest			
	\$(L1STD)	Grd L1 Standard Laminates			
	.C	Harvest			
	.MPR5	Champagne Metallic			

Not intended for installation or construction. Dealer has ultimate responsibility for accuracy and correctness of component counts & measurements. Dealer shall verify and confirm all site dimensions and suitability of products and applications consistent with published guidelines and applicable codes. All plans, drawings and specifications are property of Maxon Furniture, Inc. and may not be reproduced without written consent.



Line #	Part Number	Part Description	Qty	List	Ext List
9	M-PPLF4896RE	Prepare 48" X 96" Rectangle Laminate-Flat Edge	1	\$ 1,866.00	\$1,866.00
	.X	Non-FSC Wood			
	\$(L1STD)	Grd L1 Standard Laminates			
	.C	Harvest			
	.C	Harvest			
	.CO	No Cutouts			
Group Total List:					\$10,807.00

3rd Fl Lg Conf Rm

10	M-PPGNB	Prepare 2 PACK Ganging Bracket	2	\$ 68.00	\$136.00
11	M-PPCB	Prepare Laminate Cube Base-Seated	1	\$ 2,787.00	\$2,787.00
	.X	Non-FSC Wood			
	\$(L1STD)	Grd L1 Standard Laminates			
	.C	Harvest			
12	M-URW2472N	Univ Rec WS 24 x 72 No Grommets	2	\$ 684.00	\$1,368.00
	\$(L1STD)	L1 Standard Lam Opts			
	.C	Harvest			
	.C	Harvest			
13	M-PPPL06	Prepare Laminate Hollow Panel Base for 96" Wide	2	\$ 4,331.00	\$8,662.00
	.X	Non-FSC Wood			
	\$(L1STD)	Grd L1 Standard Laminates			
	.C	Harvest			
	.C	Harvest			

Not intended for installation or construction. Dealer has ultimate responsibility for accuracy and correctness of component counts & measurements. Dealer shall verify and confirm all site dimensions and suitability of products and applications consistent with published guidelines and applicable codes. All plans, drawings and specifications are property of Maxon Furniture, Inc. and may not be reproduced without written consent.

MSP-20147 Marysville Conference Rooms



Line #	Part Number	Part Description	Qty	List	Ext List
14	M-DXLSC36	DeXTR high storage cab: 24x36x29.5	4	\$ 1,963.00	\$7,852.00
	\$(L1STD)	Grd L1 Standard Laminates			
	.C	Harvest			
	\$(L1STD)	Grd L1 Standard Laminates			
	.C	Harvest			
	.MPR5	Champagne Metallic			
15	M-PPLF5496RE	Prepare 54" X 96" Rectangle Laminate-Flat Edge	2	\$ 2,281.00	\$4,562.00
	.X	Non-FSC Wood			
	\$(L1STD)	Grd L1 Standard Laminates			
	.C	Harvest			
	.C	Harvest			
	.CO	No Cutouts			
16	M-PPLF54SQR	Prepare 54" X 54" Square Laminate-Flat Edge	1	\$ 1,177.00	\$1,177.00
	.X	Non-FSC Wood			
	\$(L1STD)	Grd L1 Standard Laminates			
	.C	Harvest			
	.C	Harvest			
	.CO	No Cutouts			
Group Total List:					\$26,544.00

4th Fl Executive Conf Room

17	M-PPGNB	Prepare 2 PACK Ganging Bracket	1	\$ 68.00	\$68.00
18	M-URW2472N	Univ Rec WS 24 x 72 No Grommets	2	\$ 684.00	\$1,368.00
	\$(L1STD)	L1 Standard Lam Opts			

Not intended for installation or construction. Dealer has ultimate responsibility for accuracy and correctness of component counts & measurements. Dealer shall verify and confirm all site dimensions and suitability of products and applications consistent with published guidelines and applicable codes. All plans, drawings and specifications are property of Maxon Furniture, Inc. and may not be reproduced without written consent.



Line #	Part Number	Part Description	Qty	List	Ext List
	.C	Harvest			
	.C	Harvest			
19	M-PPPL96	Prepare Laminate Hallow Panel Base for 96" Wide	2	\$ 4,331.00	\$8,662.00
	.X	Non-FSC Wood			
	\$(L1STD)	Grd L1 Standard Laminates			
	.C	Harvest			
	.C	Harvest			
20	M-DXLSC36	DeXTR high storage cab: 24x36x29.5	4	\$ 1,963.00	\$7,852.00
	\$(L1STD)	Grd L1 Standard Laminates			
	.C	Harvest			
	\$(L1STD)	Grd L1 Standard Laminates			
	.C	Harvest			
	.MPR5	Champagne Metallic			
21	M-PPLF5496RE	Prepare 54" X 96" Rectangle Laminate-Flat Edge	2	\$ 2,281.00	\$4,562.00
	.X	Non-FSC Wood			
	\$(L1STD)	Grd L1 Standard Laminates			
	.C	Harvest			
	.C	Harvest			
	.CO	No Cutouts			
Group Total List:					\$22,512.00

4th Fl Legal Conf Room

22	M-PPPL120	Prepare Laminate Hallow Panel Base for 120" Wide	1	\$ 4,485.00	\$4,485.00
	.X	Non-FSC Wood			

Not intended for installation or construction. Dealer has ultimate responsibility for accuracy and correctness of component counts & measurements. Dealer shall verify and confirm all site dimensions and suitability of products and applications consistent with published guidelines and applicable codes. All plans, drawings and specifications are property of Maxon Furniture, Inc. and may not be reproduced without written consent.

MSP-20147 Marysville Conference Rooms



Line #	Part Number	Part Description	Qty	List	Ext List
	\$(L1STD)	Grd L1 Standard Laminates			
	.C	Harvest			
	.C	Harvest			
23	M-PPLF48120RE	Prepare 48" X 120" Rectangle Laminate-Flat Edge	1	\$ 2,166.00	\$2,166.00
	.X	Non-FSC Wood			
	\$(L1STD)	Grd L1 Standard Laminates			
	.C	Harvest			
	.C	Harvest			
	.CO	No Cutouts			
				Group Total List:	\$6,651.00
				Project Total List:	\$89,026.00
Ext. Volume:	531.70				
Ext. Weight:	5,390.00				

Not intended for installation or construction. Dealer has ultimate responsibility for accuracy and correctness of component counts & measurements. Dealer shall verify and confirm all site dimensions and suitability of products and applications consistent with published guidelines and applicable codes. All plans, drawings and specifications are property of Maxon Furniture, Inc. and may not be reproduced without written consent.

