

Supporting & Fostering Healthy, Thriving Communities

City of Marysville Presentation
Shawn Frederick, Administrative Officer
Snohomish Health District

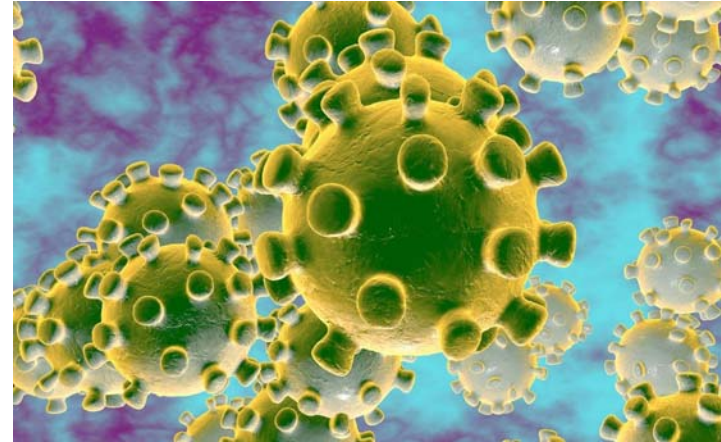


September 14, 2020

COVID-19 RESPONSE

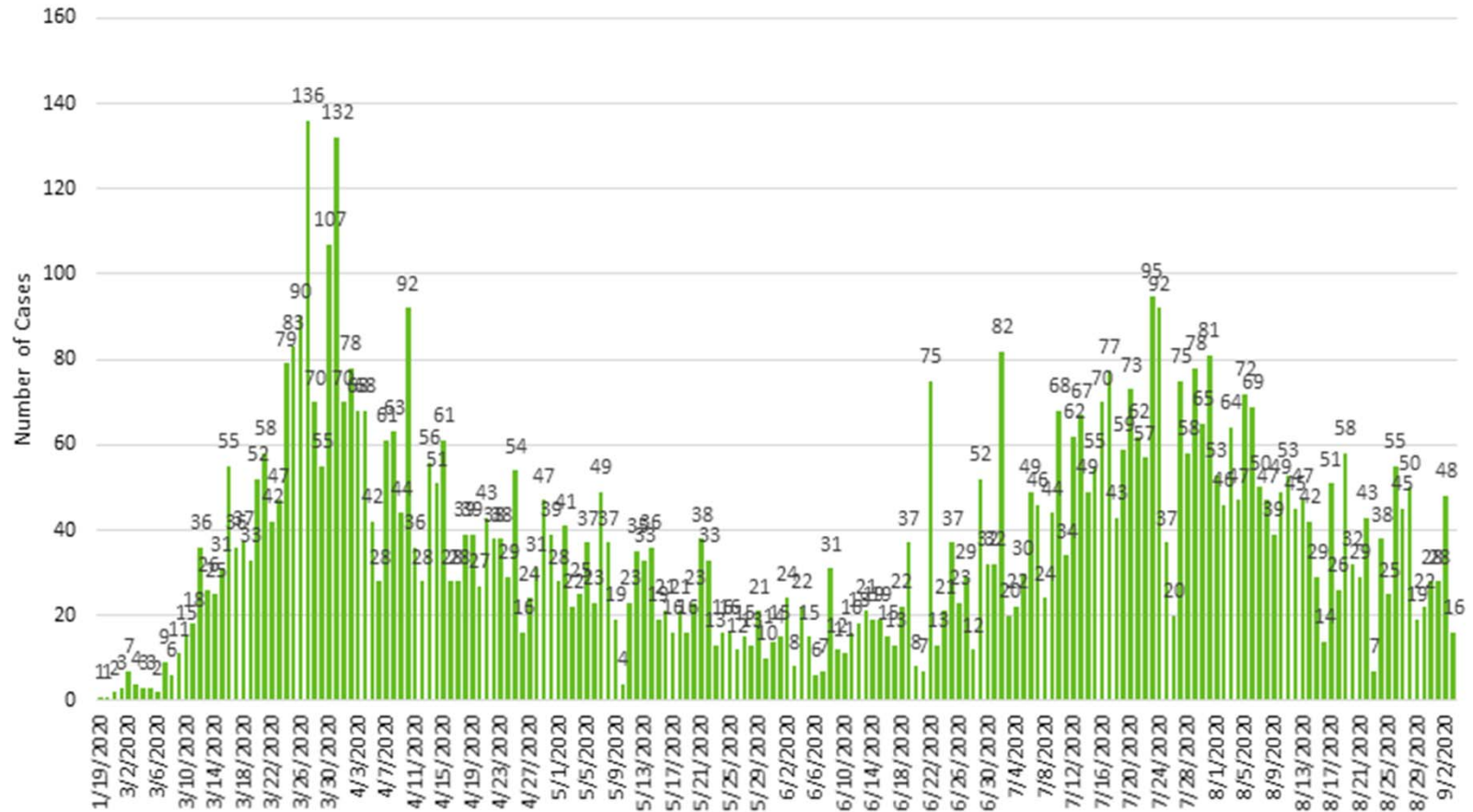
Novel Coronavirus (COVID-19)

- Situation continues to evolve, with guidance and information shifting accordingly.
- Encourage following www.snohd.org/covid and social medial channels (Facebook, Twitter and Instagram) for latest information.



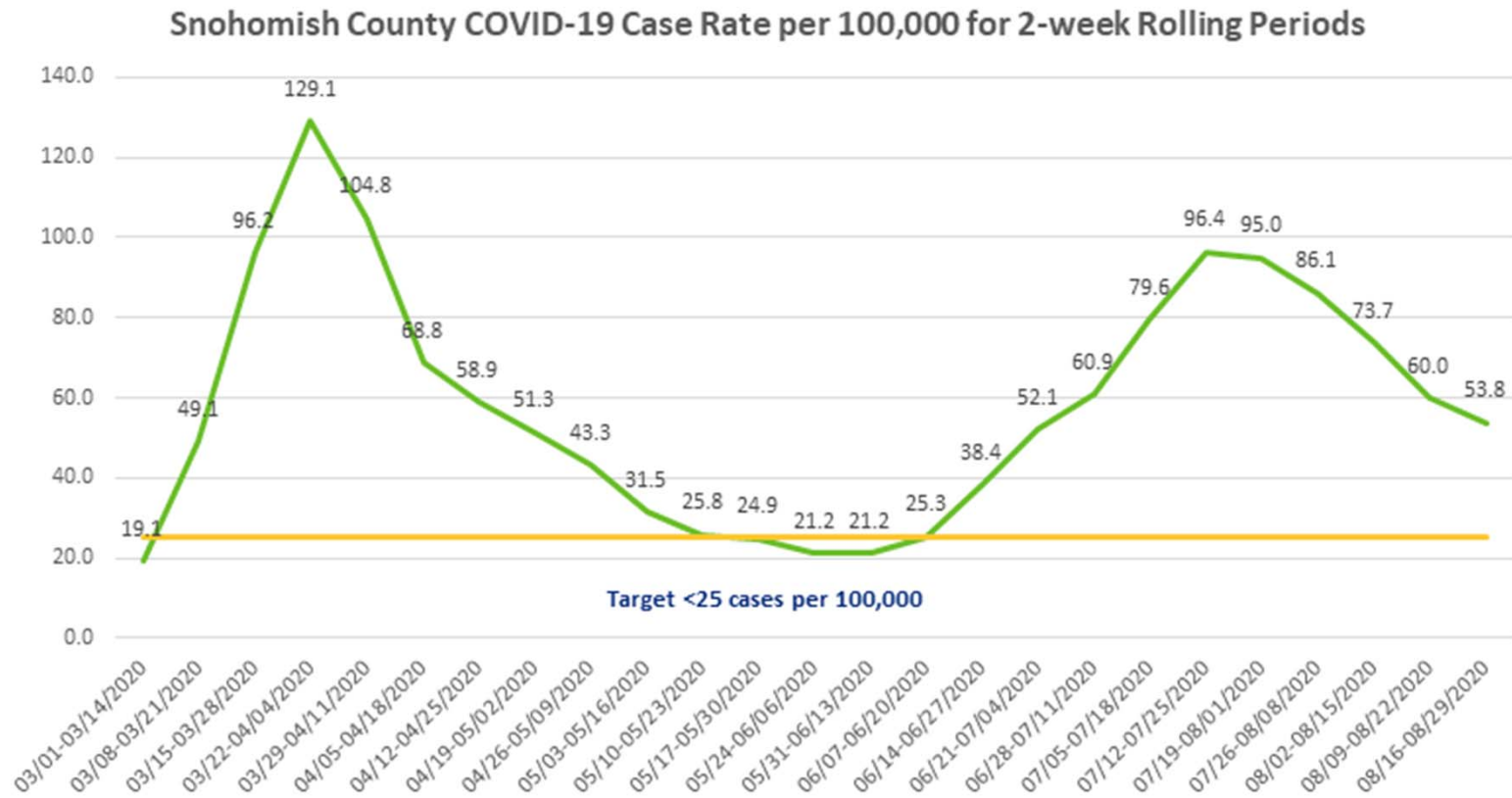
COVID-19 Cases

Number of Reported COVID-19 Cases in Snohomish County by Date



As of September 3, 2020

Rolling 2-week Case Rate



As of September 3, 2020

Snapshot & Weekly Reports

SNOHOMISH COUNTY SNAPSHOT

TIME PERIOD: JULY 9 - JULY 23
PUBLISHED: JULY 31, 2020

COVID-19 ACTIVITY AND CAPACITY IN SNOHOMISH COUNTY

Snohomish County moved to Phase 2 on June 5. The Snohomish Health District monitors these metrics and submits a weekly report to the Washington State Department of Health.

COVID-19 ACTIVITY

COVID-19 ACTIVITY	TARGET	CURRENT	CHANGE SINCE LAST REPORT
Confirmed cases reported July 9 - July 23, 2020	<25 cases / 100,000 residents / 14 days	89.4	↑ from 70.8
Trends in hospitalization for lab-confirmed COVID-19	Flat or decreasing	Increasing	↑

HEALTH CARE SYSTEM READINESS

HEALTH CARE SYSTEM READINESS	TARGET	CURRENT	CHANGE SINCE LAST REPORT
% of licensed beds occupied by patients*	<80%	79%	no change
% of licensed beds occupied by suspected and confirmed COVID-19 cases*	<10%	3%	no change

*Note: Average occupancy for period July 19 - 26, 2020.

TESTING ACTIVITY

TESTING CAPACITY & AVAILABILITY	TARGET	CURRENT	CHANGE SINCE LAST REPORT
Average number of tests performed per day during the past week compared to positive results	50 times the number of cases	19 times the number of cases	no change
Average % tests positive for COVID-19 during the past week	2%	5.4%	↓ from 5.8%
Median time from symptom onset to specimen collection among cases during the past week	median <2 days	2 days	↑ from 1 day

CASE & CONTACT INVESTIGATIONS

CASE & CONTACT INVESTIGATIONS	TARGET	CURRENT	CHANGE SINCE LAST REPORT
% of cases reached by phone or in person within 24 hours of receipt of positive lab test report*	90%	55%	↑ from 50%
% of cases reached by phone or in person within 48 hours of receipt of positive lab test report*	N/A	80%	↑ from 59%
% of contacts reached by phone or in person within 48 hours of receipt of positive lab test report on a case*	80%	83%	↓ from 95%
% of cases responding to daily monitoring	80%	N/A*	N/A

*Note: Daily monitoring recently moved to a DDM communication and tracing platform. Recent data pending.

PROTECTING HIGH-RISK POPULATIONS

PROTECTING HIGH-RISK POPULATIONS	TARGET	CURRENT	CHANGE SINCE LAST REPORT
Number of outbreaks reported by week*	2 or less	2	↓ from 13

*Note: Defined as 2 or more non-household cases epidemiologically linked within 14 days in a workplace, congregation, long, or institutional setting.

For more information go to: www.snohd.org/covid19

Snohomish County COVID-19 Cases by Week

Table 2: Local health jurisdiction notification

Week	Cases Reported
5/31-6/6/2020	1
6/7-6/13/2020	1
6/14-6/20/2020	1
6/21-6/27/2020	1
6/28-7/4/2020	1
7/5-7/11/2020	1
7/12-7/18/2020	1
7/19-7/25/2020	1

Data source: Snohomish Health District

Table 4: Current case count of COVID-19 cases in Snohomish County

Category	Number	Percent
Confirmed	89	17.3%
Probable	14	2.8%
Suspected	112	22.4%
Unconfirmed	320	63.5%
Grand Total	535	100%

Table 3: Reported test results

Week	Tr
5/31-6/6/2020	1
6/7-6/13/2020	1
6/14-6/20/2020	1
6/21-6/27/2020	1
6/28-7/4/2020	1
7/5-7/11/2020	1
7/12-7/18/2020	1
7/19-7/25/2020	1
Total 6/28-7/25/2020	8
(4 week total)	8

Data source: Sno HD COVID-19

Snohomish County COVID-19 Cases by Type of Exposure and Month of Onset

Table 5: Summary status of confirmed COVID-19 cases in Snohomish County

Category	Number	Percent
Asymptomatic (%)	480 (90%)	90%
Asymptomatic (N)	480	
Community (%)	112 (21%)	21%
Community (N)	112	
Long-term Care Resident (%)	14 (3%)	3%
Long-term Care Resident (N)	14	
Grand Total	535	100%

Data source: WACED, and included cases with unknown exposure status data



Key Priorities

- ✓ Testing capacity
- ✓ Case investigations & contact tracing
- ✓ Long-term care facilities, first responders, schools, child cares and employer notifications
- ✓ PPE availability and healthcare capacity
- ✓ Mid- and long-range planning
- ✓ Ongoing communications
 - ✓ Translated materials & expanding outreach

**In Our
COMMUNITIES**

Day-to-Day Work Continues



4,500+

Inspections on restaurants, grocery stores, espresso stands, caterers and mobile food vehicles



1,000+

Complaints addressed (food, pools, septic and solid waste)



~500

Permits for pools and spas that we routinely inspect



200+

Public and private schools with kitchen permits and required safety inspections

Resources for Local Businesses



Outreach While Social Distancing



Working to develop more curriculum and toolkits that schools, child cares and community groups can use remotely



Exploring ways to engage with the community on important health topics & needs virtually

**Moving
FORWARD**



Continuing Essential Work

- ✓ Issuing birth and death certificates
- ✓ Tracking and responding to other communicable diseases like tuberculosis, whooping cough & STDs.
- ✓ Supporting children's health needs
- ✓ Inspecting food establishments, pools & spas, etc.
- ✓ Reviewing permit applications
- ✓ Providing refugee health screenings
- ✓ Responding to complaints and violations

Implementing Our Strategic Plan

Mission

Spearhead efforts to protect, promote and advance the collective health of our community.

Goals

- Reduce the rate of communicable disease and other notifiable conditions
- Prevent or reduce chronic diseases and injuries
- Provide high-quality environmental health services
- Improve maternal, child, and family health outcomes
- Provide legally required vital records
- Address ongoing, critical public health issues
- Support increased access to medical, oral, and mental health care
- Build a more sustainable organization

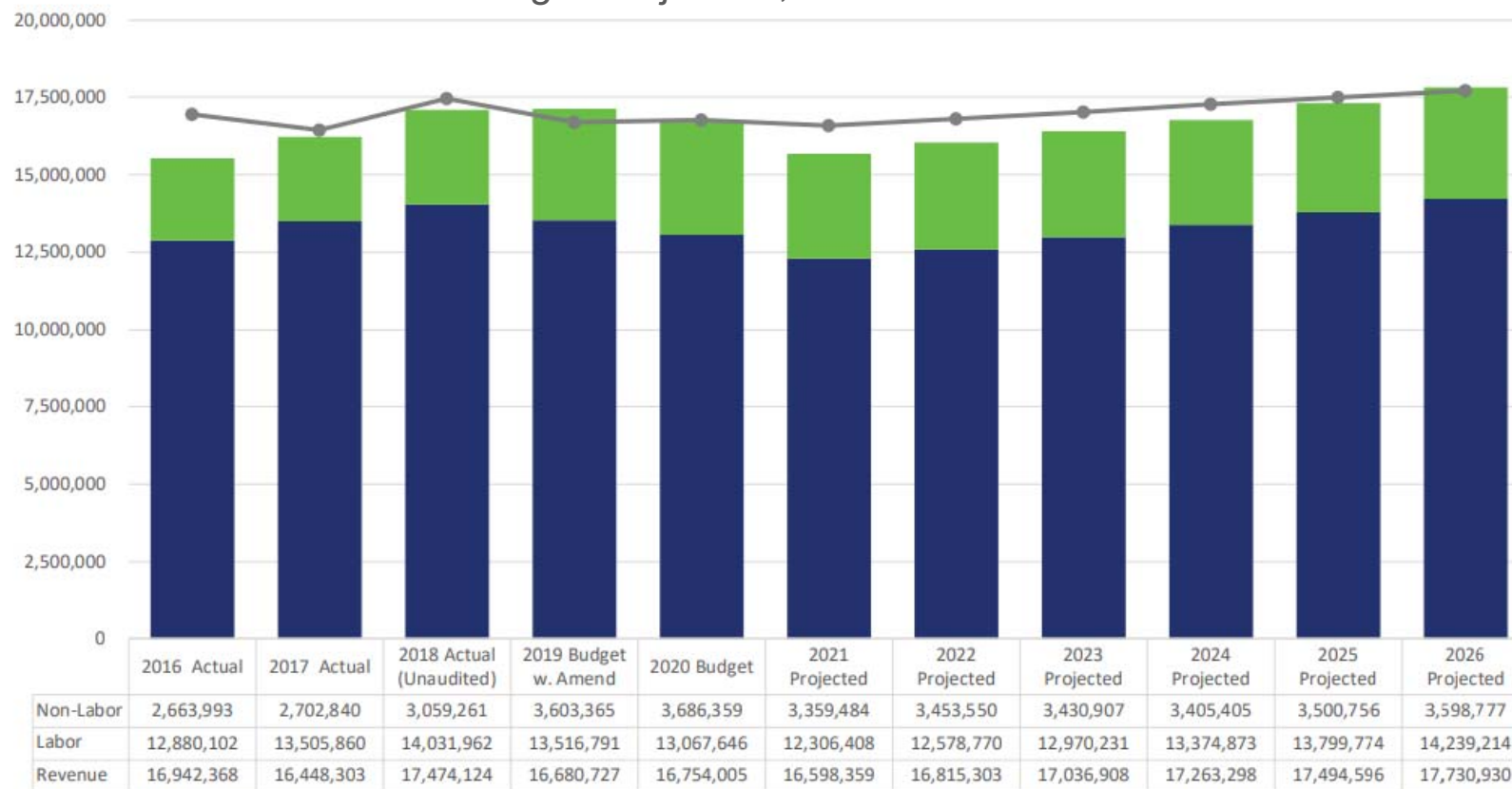


2020 Strategic Plan

Monitoring Budgets & Projections

- 2020 budget was balanced, with \$16.75 million in revenues/expenditures.
- Current budget includes 113 full-time equivalent positions.

Budget Projection, 2021-2026





Per Capita Contributions

- Naloxone purchase & coordination for cities
- Support general fund activities not covered by other funding:
 - Data & Reports
 - Community Health Assessment & Improvement Plans
 - Healthy Communities
 - Suicide Prevention
 - Safe Routes to School/Complete Streets
 - Healthy Housing
 - Health Fairs & Community Events
 - Child Care Health Outreach

Public Health Foundation

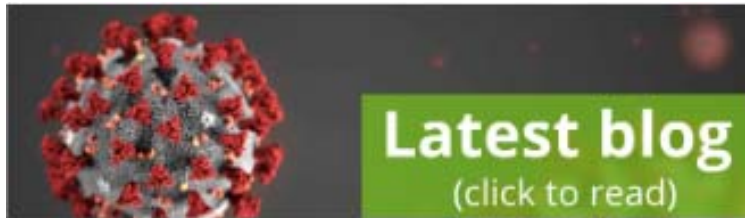


- Working over the last year to research feasibility & models
- Ad hoc committee met since April to provide recommendations to Board of Health.
- Now recruiting foundation board members.

Purpose: To provide support for priorities identified in community health assessments, community health improvement plans, and/or emerging public health issues in Snohomish County.

Stay in touch

Blog & Newsletters



Sign up for our blog, newsletters, alerts and more at www.snohd.org/NotifyMe

Social Media



Follow us on Facebook, Twitter, YouTube, and Instagram



Thank you

contact information

For more info, please contact:

Shawn Frederick, MBA

Administrative Officer

425.339.8687

SFrederick@snohd.org