

VISION 2050

Marysville City Council

April 22, 2019



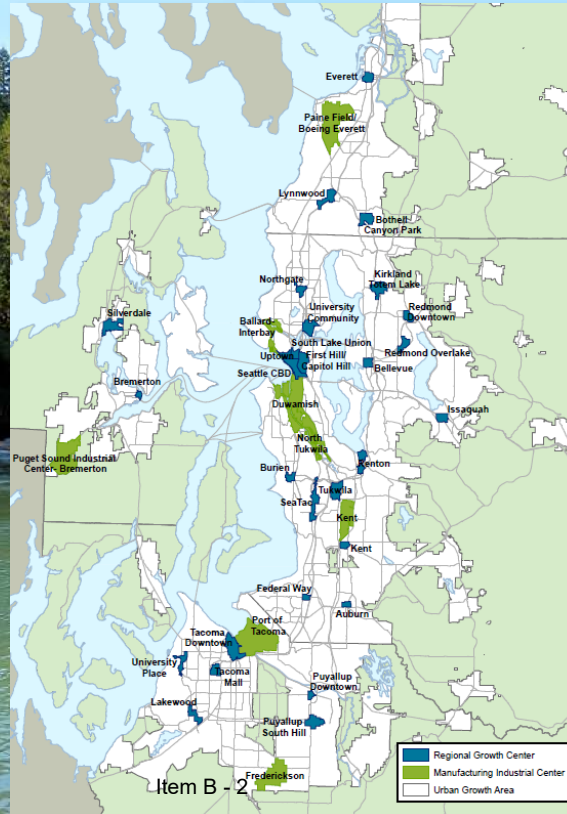
Puget Sound Regional Council

VISION 2040



VISION 2050

- A strong economy and a healthy environment
- Preserve waters, farms, recreation and resource lands
- Urban Growth Area and centers strategy
- Local actions to achieve regional VISION




VISION 2050 Work Program



VISION 2050 Work Program



 Early work

 Scoping, research, planning

 SEPA review, draft plan

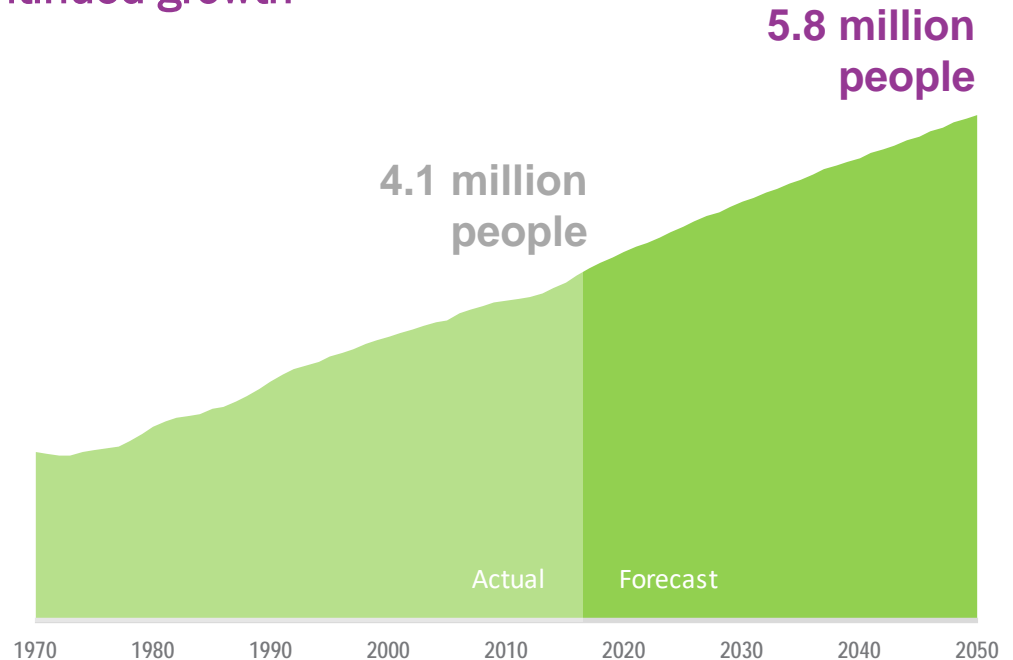
 Adoption

2050 Population Forecast



The long range forecast is for continued growth

- The region is projected to grow by about **1.8 million people** between 2017 and 2050
- Continued job growth combined with dynamics of an aging population are key drivers of the population forecast

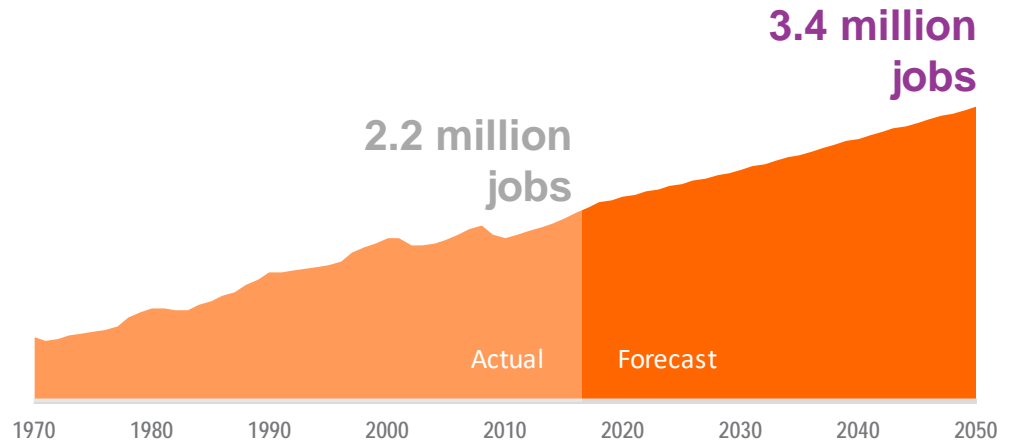


2050 Employment Forecast



The long range forecast is for continued growth

- The region is projected to add about **1.2 million jobs** between 2017 and 2050
- A robust, diversified regional economy that continues to outperform the national economy is the key driver for the jobs forecast



Who will be living here?



In 2050, the region's residents will be:

Older



18% of the region's population will be over the age of 65 by 2050, up from 14% today.

More diverse



Between 2000 and 2016, 81% of the region's population growth was people of color.

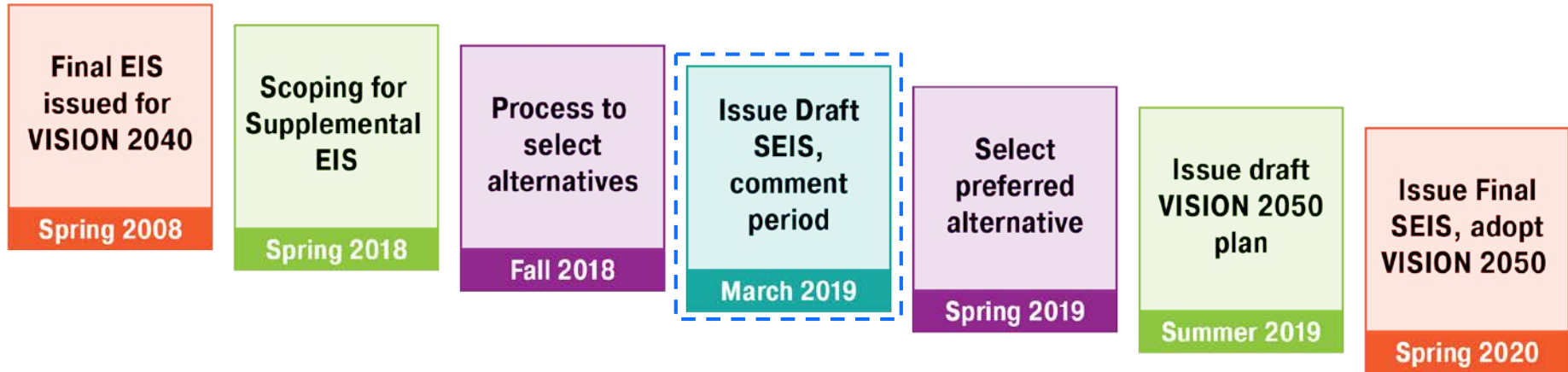
In smaller households



In 2050 there will be 2.36 people per household on average, down from 2.50 today.



VISION 2050 SEPA Process





Growth Alternatives



Growth Alternatives

Stay the Course

Growth focused in Metropolitan and Core cities

Transit Focused Growth

More compact growth focused in high capacity transit (HCT) areas

Reset Urban Growth

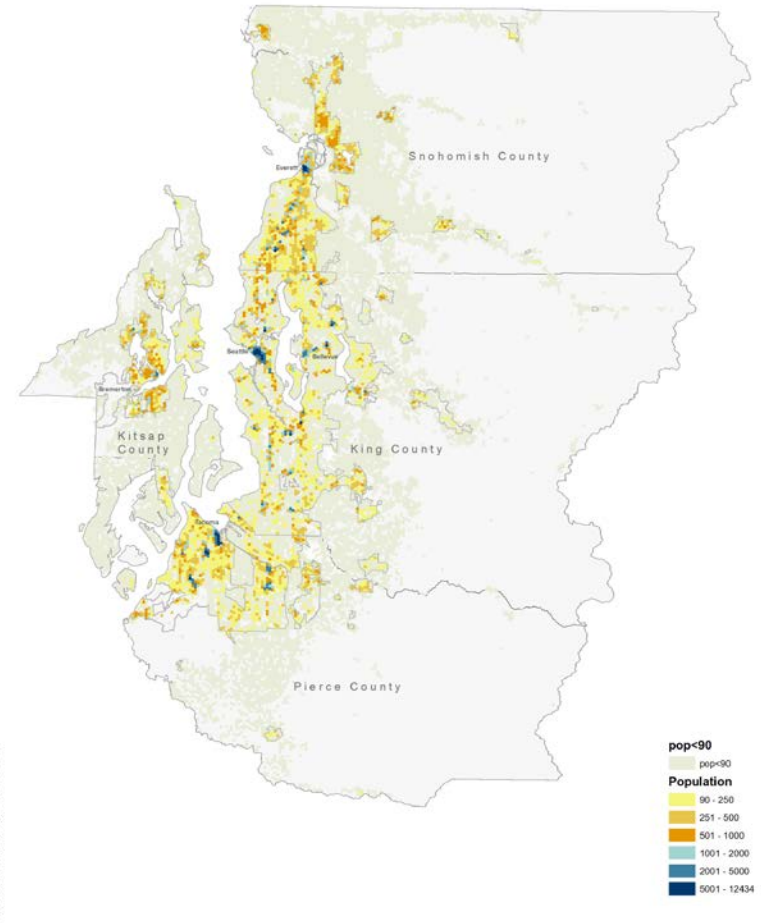
Growth more distributed throughout the urban growth area

Growth Alternatives

Stay the Course

Compact growth focused in Metropolitan and Core cities with regional growth centers

- Maintains current adopted strategy
- Largest shares of growth to Metropolitan cities of Seattle, Bellevue, Everett, Bremerton and Tacoma
- Directs more growth to cities and less growth in urban unincorporated and rural areas

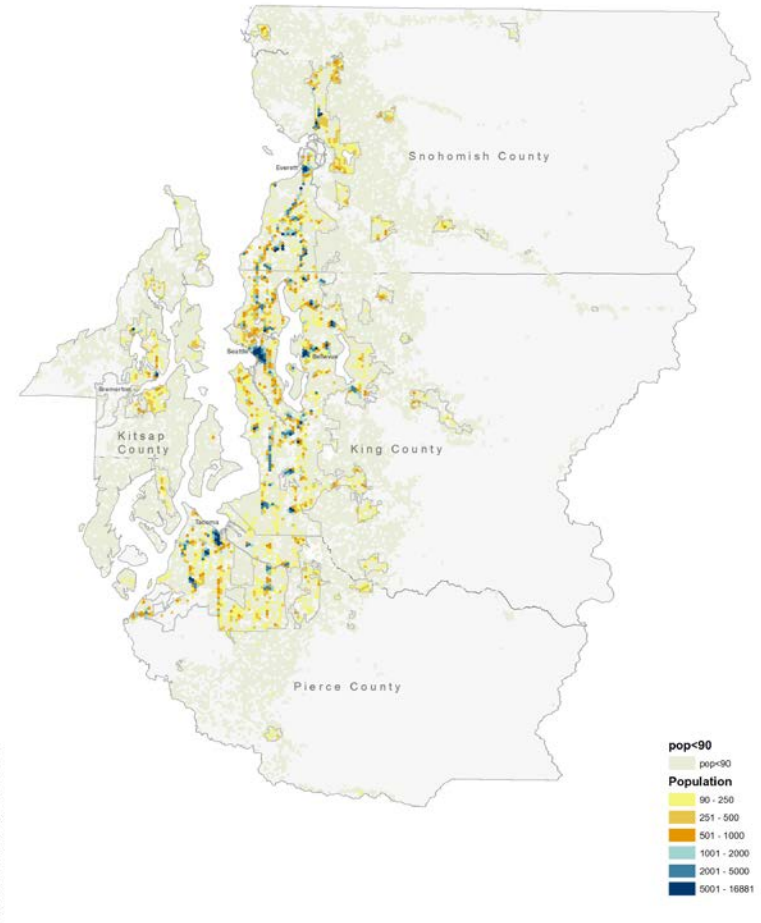


Growth Alternatives

Transit Focused Growth

Accelerated growth near existing and planned high capacity transit investments

- Goal for 75% of the region's growth to occur near high capacity transit
- Less growth in rural and unincorporated areas without high capacity transit
- Uses 2017 OFM county distribution, +5% shift of employment to Pierce, Snohomish and Kitsap counties

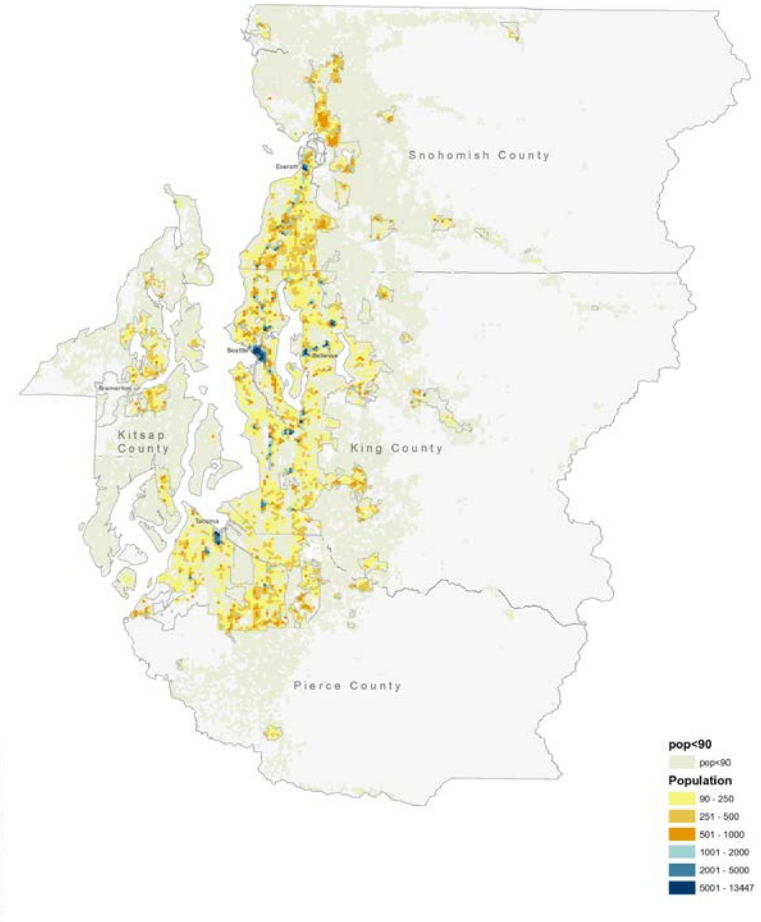


Growth Alternatives

Reset Urban Growth

More dispersed growth throughout the urban growth area

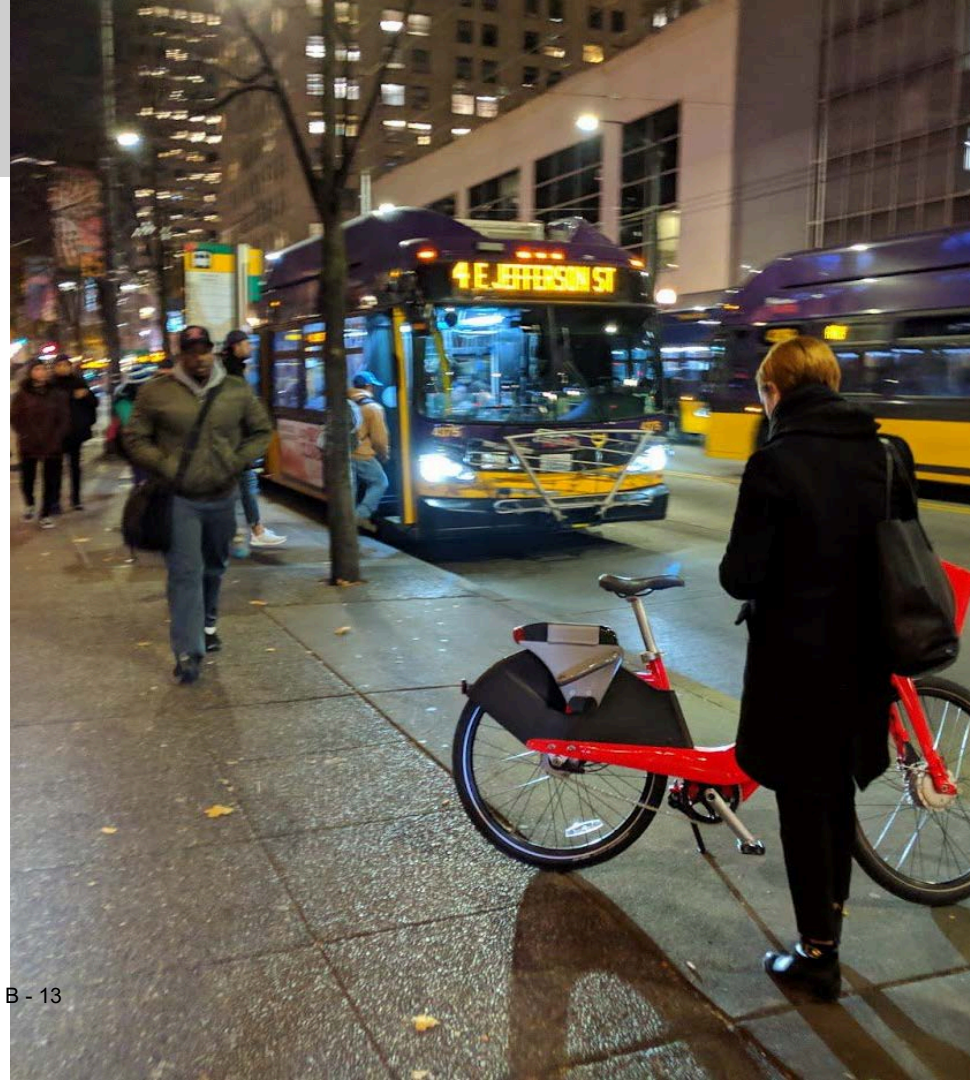
- Assumes a large share of growth to Metropolitan and Core cities
- Growth for other urban areas based on current land use capacity
- More growth in rural and urban unincorporated areas
- Uses 2017 OFM county distribution, +5% shift of employment to Pierce, Snohomish and Kitsap counties



Growth Alternatives

Common to all alternatives

- Average drive times and distances will be less, but time spent stuck in traffic will increase
- Transit ridership more than doubles
- Air quality will improve and greenhouse gas emissions will be reduced
- All require about 830,000 new housing units
- Redevelopment will increase the threat of displacement, which will require mitigation to be avoided



VISION 2050 Policies

Key themes:

- Compact, walkable places
- Leverage our transportation investments
- Promote affordable housing in all development
- Preserve open space and farm lands
- Social equity & displacement
- Four-part Strategy to address climate change

Item B - 14



Types of Communities



Common to all alternatives

- Metropolitan Cities (Everett)
- Core Cities (Lynnwood and Bothell)
- High Capacity Transit Communities (Marysville, Arlington, Edmonds, Mountlake Terrace, Mukilteo, Mill Creek, unincorporated county near transit)
- Cities and Towns
- Urban Unincorporated
- Rural

Vision 2050



- **Population and employment allocations start with Vision 2050.**
- **Next step would be Snohomish County assigning numbers based on the Vision 2050 alternative selected in May 2020.**
- **Over time the Countywide Planning policies and Vision 2050 have set a new standard for local Comprehensive Plans.**
- **Next Marysville Comprehensive Plan update due 2023 and will need to address the population and employment numbers, Countywide Planning policies, and Vision 2050.**

Marysville Vision 2050 Interest



- **Recognition of the Arlington Marysville Manufacturing Industrial Center in Vision 2050.**
- **Scheduled for adoption on June 27, 2019 before the Executive Board - both the Sub Area Plan and Regional Recognition as a Industrial Growth Center.**
- **Get the AMMIC placed on the Vision 2050 maps**
- **Eligible for regional transportation grants.**
- **The allocation process for population and employment.**
- **The policy development.**