

**CITY OF MARYSVILLE AGENDA BILL**

**EXECUTIVE SUMMARY FOR ACTION**

**CITY COUNCIL MEETING DATE: 4/13/15**

<b>AGENDA ITEM:</b> Purchase of Surplus Properties from Washington State Department of Transportation	
<b>PREPARED BY:</b> Gloria Hirashima, Chief Administrative Officer	<b>DIRECTOR APPROVAL:</b>
<b>DEPARTMENT:</b> Executive	
<b>ATTACHMENTS:</b> A. Map of parcels	
<b>BUDGET CODE:</b>	<b>AMOUNT:</b>

**SUMMARY:**

The Washington State Department of Transportation has declared certain properties as surplus along SR528. There are four properties adjacent to Jennings Park that are primarily wetland and wetland buffer areas. WSDOT has appraised the identified parcels as follows:

ICN: 1-31-0 0265 - 2.15 acres - \$7500.00

ICN: 1-31-05054 – 1.58 acres - \$5500.00

ICN: 1-31-03475 – 1.81 acres - \$ 6300.00

ICN: 1-31-00327 – 1.05 acres - \$3700.00

The appraisal values do take into consideration the largely unusable value of the property. Due to the adjacency to Jennings Park, staff believes that the property should be acquired for open space purposes. The four parcels comprise 6.1 acres and will total \$23,000.

<b>RECOMMENDED ACTION:</b>
Staff recommends that Council authorize staff to complete the purchase negotiations, and authorize the Mayor to sign the quit claim deeds for the above referenced properties.

# MARYSVILLE

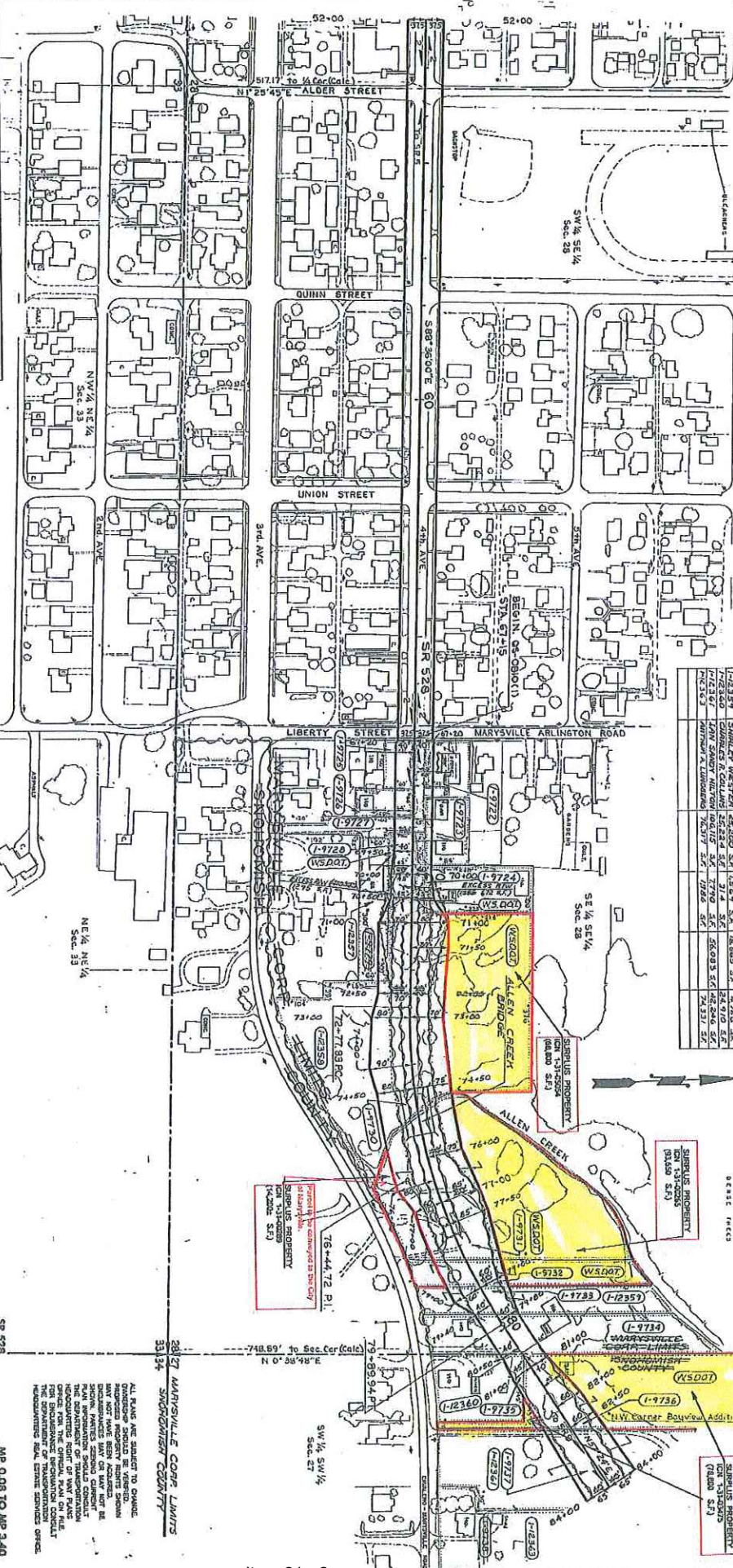
T.30N. R.5E.W.M.

**OWNERSHIPS**

PANEL	NAME	TOTAL AREA	R/W	LT	REMARKS	AC
1-1337	WILLIAM E. ROBINSON	18,000 SF	2,600 SF	58	292 SF	5.6
1-1338	EDWIN LINDBERG	18,250 SF	2,600 SF	58	292 SF	5.6
1-1339	WILLIAM E. ROBINSON	18,250 SF	2,600 SF	58	292 SF	5.6
1-1340	WILLIAM E. ROBINSON	18,250 SF	2,600 SF	58	292 SF	5.6
1-1341	WILLIAM E. ROBINSON	18,250 SF	2,600 SF	58	292 SF	5.6
1-1342	WILLIAM E. ROBINSON	18,250 SF	2,600 SF	58	292 SF	5.6
1-1343	WILLIAM E. ROBINSON	18,250 SF	2,600 SF	58	292 SF	5.6
1-1344	WILLIAM E. ROBINSON	18,250 SF	2,600 SF	58	292 SF	5.6
1-1345	WILLIAM E. ROBINSON	18,250 SF	2,600 SF	58	292 SF	5.6
1-1346	WILLIAM E. ROBINSON	18,250 SF	2,600 SF	58	292 SF	5.6
1-1347	WILLIAM E. ROBINSON	18,250 SF	2,600 SF	58	292 SF	5.6
1-1348	WILLIAM E. ROBINSON	18,250 SF	2,600 SF	58	292 SF	5.6
1-1349	WILLIAM E. ROBINSON	18,250 SF	2,600 SF	58	292 SF	5.6
1-1350	WILLIAM E. ROBINSON	18,250 SF	2,600 SF	58	292 SF	5.6

**OWNERSHIPS**

PANEL	NAME	TOTAL AREA	TAKE	LT	REMARKS	AC
1-1351	EDWIN LINDBERG	18,250 SF	2,600 SF	58	292 SF	5.6
1-1352	EDWIN LINDBERG	18,250 SF	2,600 SF	58	292 SF	5.6
1-1353	EDWIN LINDBERG	18,250 SF	2,600 SF	58	292 SF	5.6
1-1354	EDWIN LINDBERG	18,250 SF	2,600 SF	58	292 SF	5.6
1-1355	EDWIN LINDBERG	18,250 SF	2,600 SF	58	292 SF	5.6
1-1356	EDWIN LINDBERG	18,250 SF	2,600 SF	58	292 SF	5.6
1-1357	EDWIN LINDBERG	18,250 SF	2,600 SF	58	292 SF	5.6
1-1358	EDWIN LINDBERG	18,250 SF	2,600 SF	58	292 SF	5.6
1-1359	EDWIN LINDBERG	18,250 SF	2,600 SF	58	292 SF	5.6
1-1360	EDWIN LINDBERG	18,250 SF	2,600 SF	58	292 SF	5.6



NOTES: ALL BEARINGS AND DISTANCES  
 ARE TAKEN FROM TITLE REPORTS  
 AND/OR PLAT MAP.  
 FOR TOTAL PARCEL DETAIL,  
 SEE SHEET NO. 1.

**LEGEND**

PROPERTY OWNERSHIP NUMBERS

SCALE IN FEET

0 100 200

**CURVE DATA**

PI STATION	Δ	R	T
76+4.472	34°00'11"	120.0'	36.6(ΔS) 71.2(ΔT)

**REVISIONS**

NO.	DATE	DESCRIPTION
1	11/14/10	Initial Issue
2	11/14/10	Revised
3	11/14/10	Revised
4	11/14/10	Revised
5	11/14/10	Revised
6	11/14/10	Revised
7	11/14/10	Revised
8	11/14/10	Revised
9	11/14/10	Revised
10	11/14/10	Revised

MP 0.06 TO MP 3.40  
 JCT. SR 5 IN MARYSVILLE TO JCT. SR 9  
 SNOWDRIFT COUNTY

CURVE DATA			
P.I. STATION	Δ	R	T
90+52.86	34°58'31"	1000'	314.98' 610.23'

PARCEL NO.	NAME	TOTAL AREA	TAKE	LT. REMAINDER RT.
1-9737	JAN SANDY HILTON	0.20 AC.	0.20 AC.	0.00 AC.
1-9738	AMARILIA TUMBER	0.20 AC.	0.20 AC.	0.00 AC.
1-9739	OMI L. WOOD	0.20 AC.	0.20 AC.	0.00 AC.
1-9740	BILL L. WETZEL	0.20 AC.	0.20 AC.	0.00 AC.
1-9741	LAWRENCE E. HART	0.20 AC.	0.20 AC.	0.00 AC.
1-9742	PAUL A. SLOAN	0.20 AC.	0.20 AC.	0.00 AC.
1-9743	THOMAS W. HENNING	0.20 AC.	0.20 AC.	0.00 AC.
1-9744	WILLIAM W. RIZZO	0.20 AC.	0.20 AC.	0.00 AC.
1-9745	ROBERT J. HAYES	0.20 AC.	0.20 AC.	0.00 AC.
1-9746	DANIEL T. BERTON	0.20 AC.	0.20 AC.	0.00 AC.
1-9747	CHARLES M. HINDS	0.20 AC.	0.20 AC.	0.00 AC.
1-9748	ROBERT J. HAYES	0.20 AC.	0.20 AC.	0.00 AC.
1-9749	DOUGLAS T. SHINE	0.20 AC.	0.20 AC.	0.00 AC.
1-9750	DOUGLAS T. SHINE	0.20 AC.	0.20 AC.	0.00 AC.
1-9751	DOUGLAS T. SHINE	0.20 AC.	0.20 AC.	0.00 AC.
1-9752	DOUGLAS T. SHINE	0.20 AC.	0.20 AC.	0.00 AC.
1-9753	DOUGLAS T. SHINE	0.20 AC.	0.20 AC.	0.00 AC.
1-9754	DOUGLAS T. SHINE	0.20 AC.	0.20 AC.	0.00 AC.
1-9755	DOUGLAS T. SHINE	0.20 AC.	0.20 AC.	0.00 AC.
1-9756	DOUGLAS T. SHINE	0.20 AC.	0.20 AC.	0.00 AC.
1-9757	DOUGLAS T. SHINE	0.20 AC.	0.20 AC.	0.00 AC.
1-9758	DOUGLAS T. SHINE	0.20 AC.	0.20 AC.	0.00 AC.
1-9759	DOUGLAS T. SHINE	0.20 AC.	0.20 AC.	0.00 AC.
1-9760	DOUGLAS T. SHINE	0.20 AC.	0.20 AC.	0.00 AC.
1-9761	DOUGLAS T. SHINE	0.20 AC.	0.20 AC.	0.00 AC.
1-9762	DOUGLAS T. SHINE	0.20 AC.	0.20 AC.	0.00 AC.
1-9763	DOUGLAS T. SHINE	0.20 AC.	0.20 AC.	0.00 AC.
1-9764	DOUGLAS T. SHINE	0.20 AC.	0.20 AC.	0.00 AC.
1-9765	DOUGLAS T. SHINE	0.20 AC.	0.20 AC.	0.00 AC.
1-9766	DOUGLAS T. SHINE	0.20 AC.	0.20 AC.	0.00 AC.
1-9767	DOUGLAS T. SHINE	0.20 AC.	0.20 AC.	0.00 AC.
1-9768	DOUGLAS T. SHINE	0.20 AC.	0.20 AC.	0.00 AC.
1-9769	DOUGLAS T. SHINE	0.20 AC.	0.20 AC.	0.00 AC.
1-9770	DOUGLAS T. SHINE	0.20 AC.	0.20 AC.	0.00 AC.
1-9771	DOUGLAS T. SHINE	0.20 AC.	0.20 AC.	0.00 AC.
1-9772	DOUGLAS T. SHINE	0.20 AC.	0.20 AC.	0.00 AC.
1-9773	DOUGLAS T. SHINE	0.20 AC.	0.20 AC.	0.00 AC.
1-9774	DOUGLAS T. SHINE	0.20 AC.	0.20 AC.	0.00 AC.
1-9775	DOUGLAS T. SHINE	0.20 AC.	0.20 AC.	0.00 AC.
1-9776	DOUGLAS T. SHINE	0.20 AC.	0.20 AC.	0.00 AC.
1-9777	DOUGLAS T. SHINE	0.20 AC.	0.20 AC.	0.00 AC.
1-9778	DOUGLAS T. SHINE	0.20 AC.	0.20 AC.	0.00 AC.
1-9779	DOUGLAS T. SHINE	0.20 AC.	0.20 AC.	0.00 AC.
1-9780	DOUGLAS T. SHINE	0.20 AC.	0.20 AC.	0.00 AC.
1-9781	DOUGLAS T. SHINE	0.20 AC.	0.20 AC.	0.00 AC.
1-9782	DOUGLAS T. SHINE	0.20 AC.	0.20 AC.	0.00 AC.
1-9783	DOUGLAS T. SHINE	0.20 AC.	0.20 AC.	0.00 AC.
1-9784	DOUGLAS T. SHINE	0.20 AC.	0.20 AC.	0.00 AC.
1-9785	DOUGLAS T. SHINE	0.20 AC.	0.20 AC.	0.00 AC.
1-9786	DOUGLAS T. SHINE	0.20 AC.	0.20 AC.	0.00 AC.
1-9787	DOUGLAS T. SHINE	0.20 AC.	0.20 AC.	0.00 AC.
1-9788	DOUGLAS T. SHINE	0.20 AC.	0.20 AC.	0.00 AC.
1-9789	DOUGLAS T. SHINE	0.20 AC.	0.20 AC.	0.00 AC.
1-9790	DOUGLAS T. SHINE	0.20 AC.	0.20 AC.	0.00 AC.
1-9791	DOUGLAS T. SHINE	0.20 AC.	0.20 AC.	0.00 AC.
1-9792	DOUGLAS T. SHINE	0.20 AC.	0.20 AC.	0.00 AC.
1-9793	DOUGLAS T. SHINE	0.20 AC.	0.20 AC.	0.00 AC.
1-9794	DOUGLAS T. SHINE	0.20 AC.	0.20 AC.	0.00 AC.
1-9795	DOUGLAS T. SHINE	0.20 AC.	0.20 AC.	0.00 AC.
1-9796	DOUGLAS T. SHINE	0.20 AC.	0.20 AC.	0.00 AC.
1-9797	DOUGLAS T. SHINE	0.20 AC.	0.20 AC.	0.00 AC.
1-9798	DOUGLAS T. SHINE	0.20 AC.	0.20 AC.	0.00 AC.
1-9799	DOUGLAS T. SHINE	0.20 AC.	0.20 AC.	0.00 AC.
1-9800	DOUGLAS T. SHINE	0.20 AC.	0.20 AC.	0.00 AC.

OWNERSHIPS

NOTES: ALL BEARINGS AND DISTANCES PRECEDED BY AN ASTERISK ARE TAKEN FROM TITLE REPORTS AND/OR PLAT MAPS. SEE SHEET NO. 1.

LEGEND

PROPERTY OWNERSHIP NUMBER

SCALE IN FEET

100 0 100 200

SR 528

JCT. SR 5 IN MARYSVILLE TO JCT. SR 9

MP 0.08 TO MP 3.40

RIGHT OF WAY

Station 84+00 to Station 113+00

SHANDORISH COUNTY

WASHINGTON STATE DEPARTMENT OF TRANSPORTATION

DESIGNED BY: [Signature]

CHECKED BY: [Signature]

DATE: [Date]

SCALE: 1" = 40'

SHEET 5 OF 22 B SHEETS

SR 528 71

