

PLANT SCHEDULE

CODE	BOTANICAL / COMMON NAME	SIZE	QTY	REMARKS
DECIDUOUS TREES				
ACE CRS	Acer platanoides 'Crimson Sentry' / Crimson Sentry Norway Maple	3" Cal.	3	
ALN RUB	Alnus rubra / Red Alder	3" Cal.	2	
COR NUT	Cornus nuttallii / Pacific Dogwood	3" Cal.	2	
FRA LAT	Fraxinus latifolia / Oregon Ash	3" Cal.	3	
PRU CHO	Prunus virginiana / Chokecherry	3" Cal.	1	
QUE ACU	Quercus acutissima / Sawtooth Oak	2.5" Cal.	11	

EVERGREEN TREES				
ARB STR	Arbutus unedo / Strawberry Tree	12' Ht.	2	
CAR FST	Carpinus betulus 'Fastigiata' / Pyramidal European Hornbeam	8' Ht.	25	
PIC FA2	Picea pungens 'Fastigiata' / Columnar Colorado Spruce	8' Ht.	24	
ORNAMENTAL				
ACE BKM	Acer palmatum 'Beni Komachi' / Beni Komachi Japanese Maple	6' Ht.	1	
ACE SAN	Acer palmatum 'Sango-kaku' / Coral Bark Japanese Maple	5' Ht.	1	
AME GRA	Amelanchier x grandiflora 'Autumn Brilliance' / Autumn Brilliance Apple Serviceberry	2.5" Cal.	1	

CODE	BOTANICAL / COMMON NAME	SIZE	REMARKS	QTY	REMARKS
SHRUBS					
ARB COM	Arbutus unedo 'Compacta' / Compact Strawberry Tree	3" Ht.	Container	84	
COT LUC	Cotoneaster lucidus / Shiny Cotoneaster	5 gal.		19	
MAT STR	Matteuccia struthiopteris / Ostrich Fern	1 gal.		170	
PAX MYS	Paxistima myrsinites / Oregon Boxwood	5 gal.		196	
PHY MA2	Physocarpus malvaceus / Mallow Ninebark	5 gal.		83	
VAC PAR	Vaccinium parvifolium / Red Huckleberry	5 gal.		8	

BIOSWALE ZONE 1					
CAR MER	Carex mertensii / Mertens' Sedge	1 gal.		49	Zone 1
JUN EFF	Juncus effusus / Soft Rush	1 gal.		24	Zone 1
SAL PUR	Salix purpurea 'Nana' / Dwarf Purple Osier Willow	5 gal.		3	Zone 1
SPI DOU	Spiraea douglasii / Western Spiraea	5 gal.		152	Bioswale

BIOSWALE ZONE 2					
RUB THI	Rubus parviflorus / Thimbleberry	5 gal.		10	Zone 2
SYM ALB	Symphoricarpos albus / Common White Snowberry	5 gal.		7	

BIOSWALE ZONE 3					
ABE GRA	Abelia x grandiflora / Glossy Abelia	5 gal.		14	
VAC OVA	Vaccinium ovatum / Evergreen Huckleberry	5 gal.		91	

GRASSES					
CAR BUC	Carex buchananii / Leather Leaf Sedge	1 gal.		37	
CAR OB2	Carex obrupta / Slough Sedge	1 gal.		390	
DES TUF	Deschampsia cespitosa / Tufted Hair Grass	1 gal.		70	
HEL SEM	Helictotrichon sempervirens / Blue Oat Grass	1 gal.		80	
SCH LIT	Schizachyrium scoparium / Little Bluestem	1 gal.		305	

PERENNIALS					
ACH UL1	Achillea millefolium lanulosa / Common Yarrow	1 gal.		75	
ACH OCD	Achillea millefolium occidentale / Western Yarrow	1 gal.		35	
CAM ROT	Campanula rotundifolia / Harebell	1 gal.		83	
ECH PUR	Echinacea purpurea / Coneflower	1 gal.		33	
GYM DRY	Gymnocarpium dryopteris / Oak Fern	1 gal.		21	
PEN SIR	Penstemon serrulatus / Coast Penstemon	1 gal.		25	
PTE WES	Pteridium aquilinum / Western Bracken Fern	3 gal.		15	

CODE	BOTANICAL / COMMON NAME	SIZE	CONTAINER	SPACING	QTY	REMARKS
GROUND COVERS						
ARC UVA	Arctostaphylos uva-ursi / Kinnikinnick	1 gal.		36" o.c.	89	
POL ROC	Polypodium virginianum / Rock Polypody	1 gal.	Container	12" o.c.	1,274	

SOD/SEED						
FES ARU	Festuca arundinacea / Tall Fescue	sod	solid sod		6,350 sf	
BRO CIL	Native Seed Mix / Locally Sourced	seed	hydroseed		7,017 sf	L&H Seeds Connell, WA

ISSUED DATE:
PERMIT SET
OCT 28, 2023

BENNY AND LYDIA KIM DESIGN

Ph: (206) 384-5317
Email: bennykimdesign@outlook.com

MARGARET ESTATE APARTMENT
9106 55TH AVE NE
MARYSVILLE WA 98270

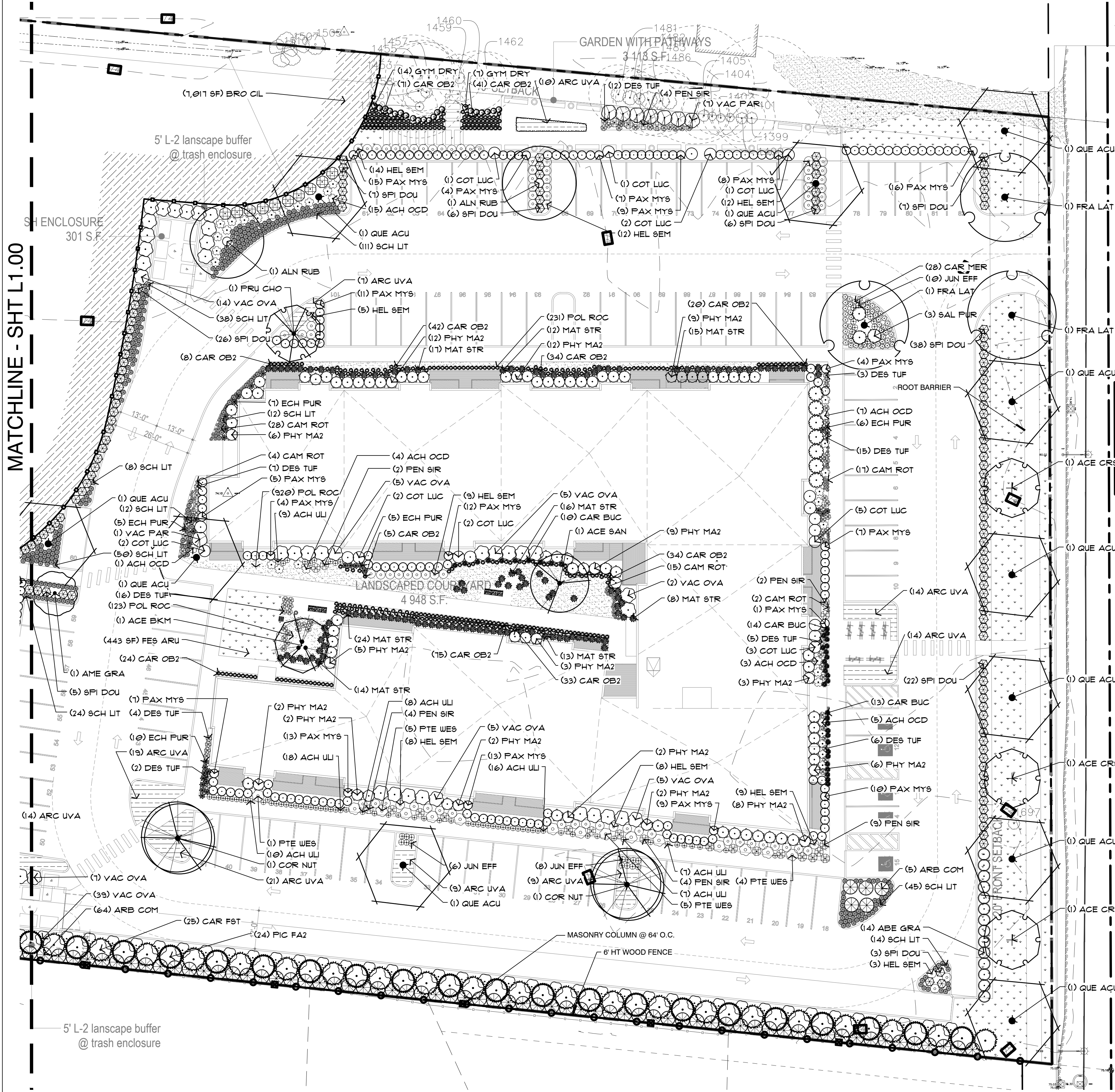
LANDSCAPE PLANTING PLAN
FILE 2241
LI.00

ISSUED DATE:
PERMIT SET
OCT 28, 2023

BENNY AND LYDIA KIM DESIGN
Ph: (206) 304-5317
Email: bennykimdesign@outlook.com

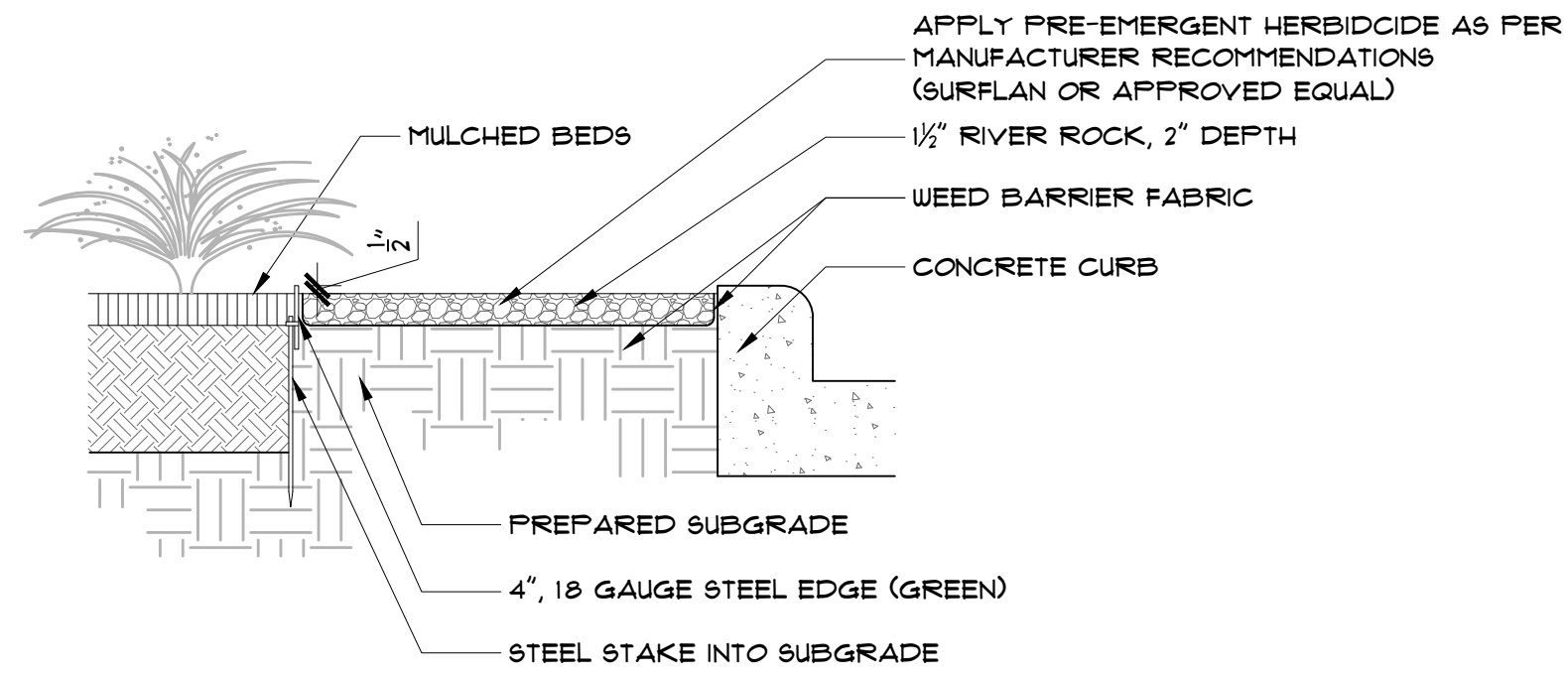
MARGARET ESTATE APARTMENT
9106 55TH AVE NE
MARYSVILLE WA 98270

LANDSCAPE PLANTING PLAN
FILE 2241
LI.01

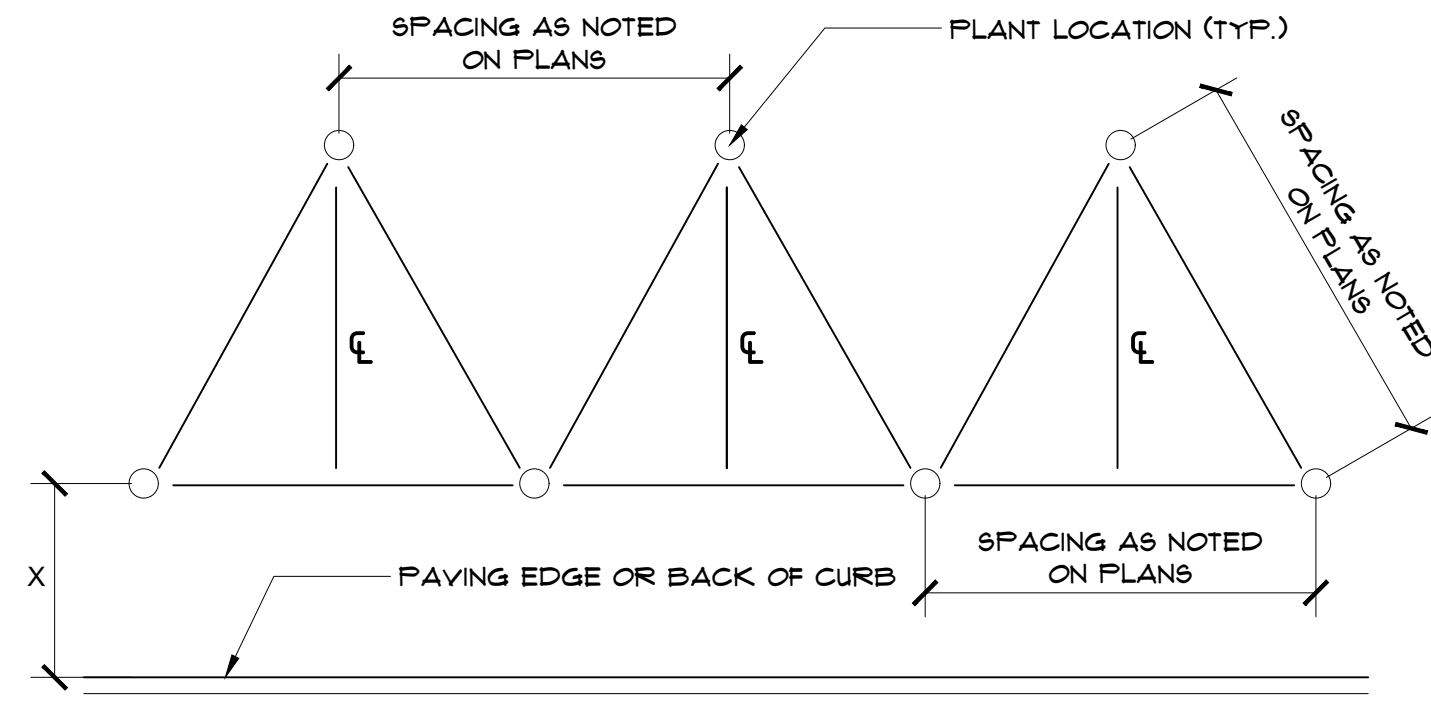


PLANT SCHEDULE

CODE	BOTANICAL / COMMON NAME	SIZE	QTY	REMARKS
DECIDUOUS TREES				
ACE CRS	Acer platanoides 'Crimson Sentry' / Crimson Sentry Norway Maple	3" Cal.	3	
ALN RUB	Alnus rubra / Red Alder	3" Cal.	2	
COR NUT	Cornus nuttallii / Pacific Dogwood	3" Cal.	2	
FRA LAT	Fraxinus latifolia / Oregon Ash	3" Cal.	3	
PRU CHO	Prunus virginiana / Chokecherry	3" Cal.	1	
QUE ACU	Quercus acutissima / Sawtooth Oak	2.5" Cal.	11	
EVERGREEN TREES				
ARB STR	Arbutus unedo / Strawberry Tree	12' Ht.	2	
CAR FST	Carpinus betulus 'Fastigiata' / Pyramidal European Hornbeam	8' Ht.	25	
PIC FA2	Picea pungens 'Fastigiata' / Columnar Colorado Spruce	8' Ht.	24	
ORNAMENTAL				
ACE BKM	Acer palmatum 'Beni Komachi' / Beni Komachi Japanese Maple	6" Ht.	1	
ACE SAN	Acer palmatum 'Sango-kaku' / Coral Bark Japanese Maple	5" Ht.	1	
AME GRA	Amelanchier x grandiflora 'Autumn Brilliance' / Autumn Brilliance Apple Serviceberry	2.5" Cal.	1	
SHRUBS				
ARB COM	Arbutus unedo 'Compacta' / Compact Strawberry Tree	3" Ht.	84	Container
COT LUC	Cotoneaster lucidus / Shiny Cotoneaster	5 gal.	19	
MAT STR	Matteuccia struthiopteris / Ostrich Fern	1 gal.	170	
PAX MYS	Paxistima myrsinites / Oregon Boxwood	5 gal.	196	
PHY MA2	Physocarpus malvaceus / Mallow Ninebark	5 gal.	83	
VAC PAR	Vaccinium parvifolium / Red Huckleberry	5 gal.	8	
BIOSWALE ZONE 1				
CAR MER	Carex mertensii / Mertens' Sedge	1 gal.	49	Zone 1
JUN EFF	Juncus effusus / Soft Rush	1 gal.	24	Zone 1
SAL PUR	Salix purpurea 'Nana' / Dwarf Purple Osier Willow	5 gal.	3	Zone 1
SPI DOU	Spiraea douglasii / Western Spiraea	5 gal.	152	Bioswale
BIOSWALE ZONE 2				
RUB THI	Rubus parviflorus / Thimbleberry	5 gal.	10	Zone 2
SYM ALB	Symphoricarpos albus / Common White Snowberry	5 gal.	7	
BIOSWALE ZONE 3				
ACE CRS	Acer x grandiflora / Glossy Abelia	5 gal.	14	
ABE GRA	Abelia x grandiflora / Glossy Abelia	5 gal.	91	
VAC OVA	Vaccinium ovatum / Evergreen Huckleberry	5 gal.		
GRASSES				
CAR BUC	Carex buchananii / Leather Leaf Sedge	1 gal.	37	
CAR OB2	Carex obnupta / Slough Sedge	1 gal.	390	
DES TUF	Deschampsia cespitosa / Tufted Hair Grass	1 gal.	70	
HEL SEM	Helictotrichon sempervirens / Blue Oat Grass	1 gal.	80	
SCH LIT	Schizachyrium scoparium / Little Bluestem	1 gal.	305	
PERENNIALS				
ACH ULI	Achillea millefolium lanulosa / Common Yarrow	1 gal.	75	
ACH OCD	Achillea millefolium occidentalis / Western Yarrow	1 gal.	35	
CAM ROT	Campanula rotundifolia / Harebell	1 gal.	83	
ECH PUR	Echinacea purpurea / Coneflower	1 gal.	33	
GYM DRY	Gymnocarpium dryopteris / Oak Fern	1 gal.	21	
PEN SIR	Penstemon serrulatus / Coast Penstemon	1 gal.	25	
PTE WES	Pteridium aquilinum / Western Bracken Fern	3 gal.	15	
GROUND COVERS				
ARC UVA	Arctostaphylos uva-ursi / Kinnikinnick	1 gal.	89	
POL ROC	Polypodium virginianum / Rock Polypody	1 gal.	1,274	Container
SOD/SEED				
FES ARU	Festuca arundinacea / Tall Fescue	sod	6,350 sf	
BRO CIL	Native Seed Mix / Locally Sourced	seed	7,017 sf	L&H Seeds Connell, WA



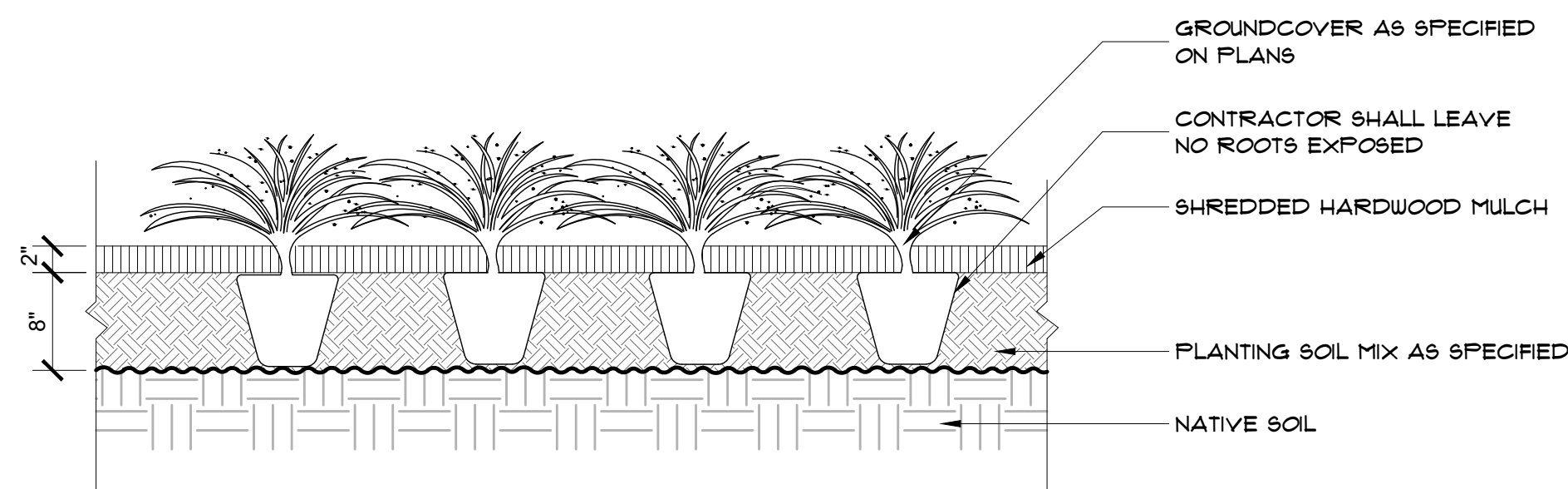
STEEL EDGE AT AGGREGATE
NTS: 1"=1'-0"



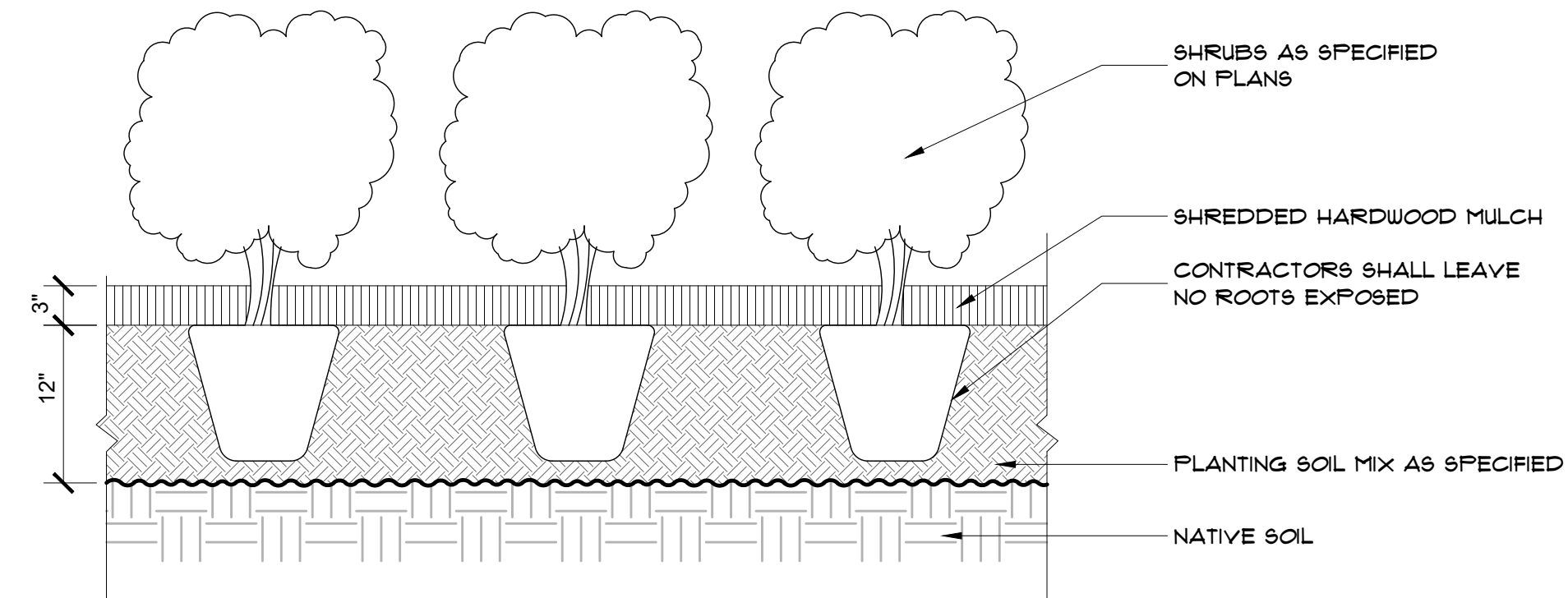
NOTE:
X = 12" MIN. FOR GROUNDCOVER
X = 24" MIN. FOR SHRUBS

NOTE: SPACING DIAGRAM REFERS TO ALL PLANTING UNLESS NOTED OTHERWISE.

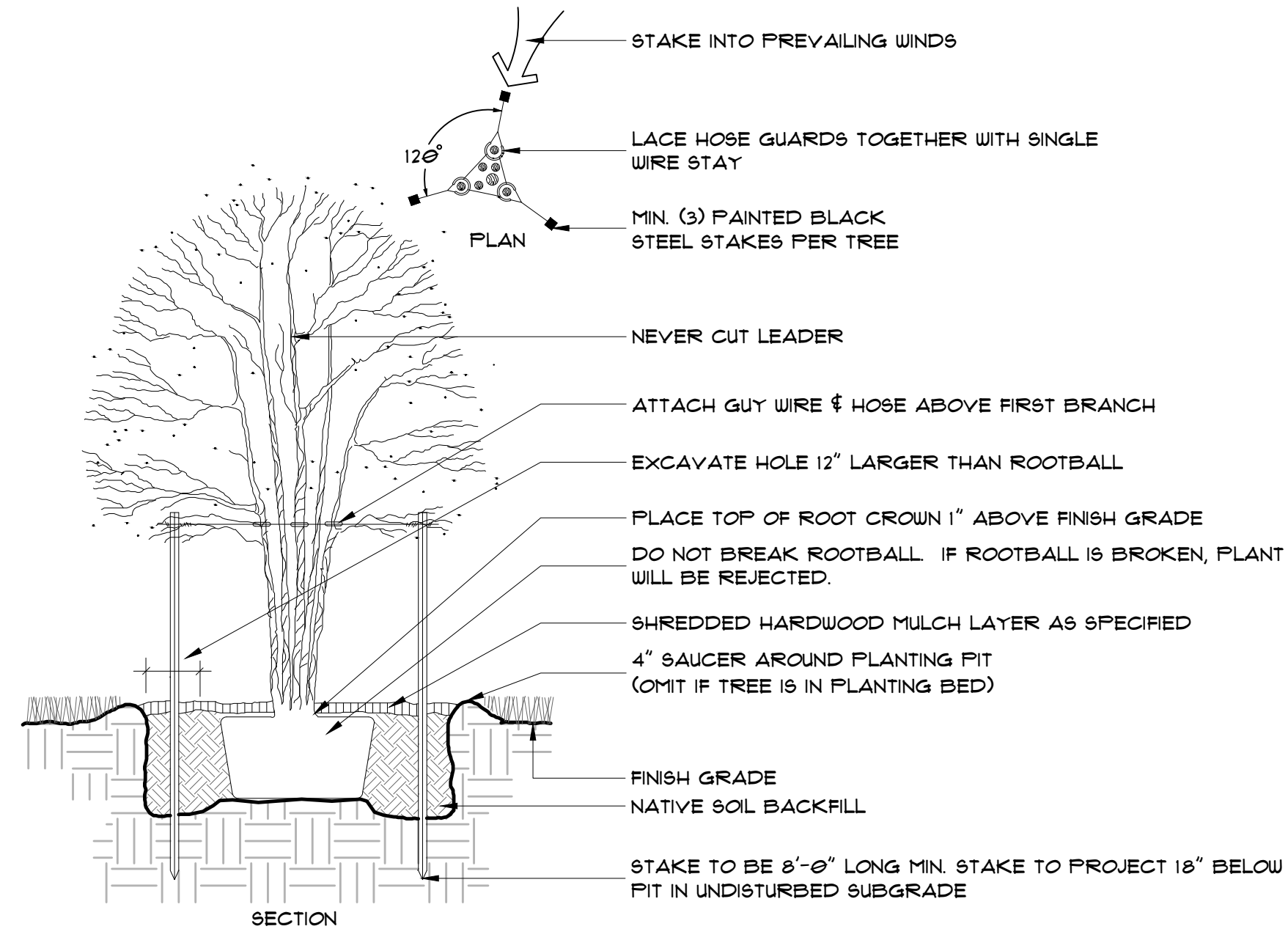
TRIANGULAR SPACING DETAIL
NTS: 1"=1'-0"



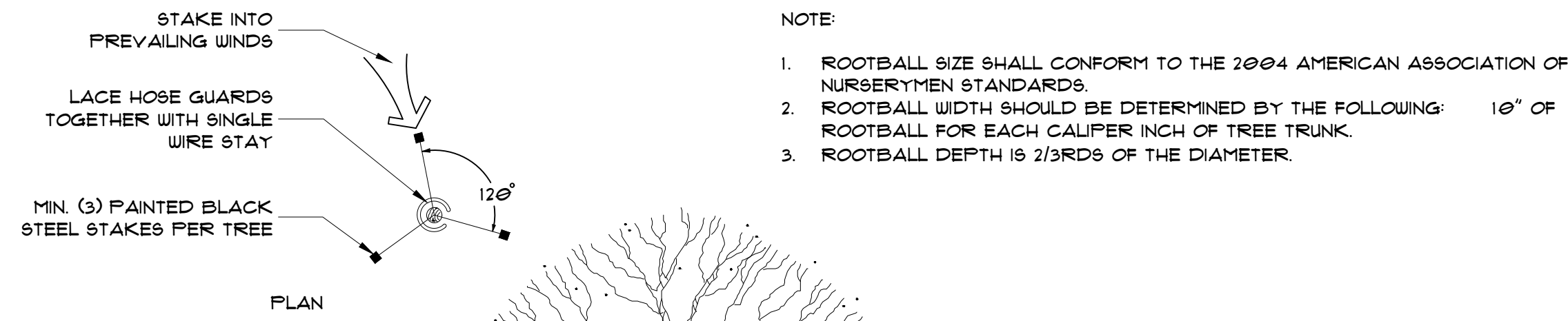
GROUNDCOVER PLANTING DETAIL
NTS: 1"=1'-0"



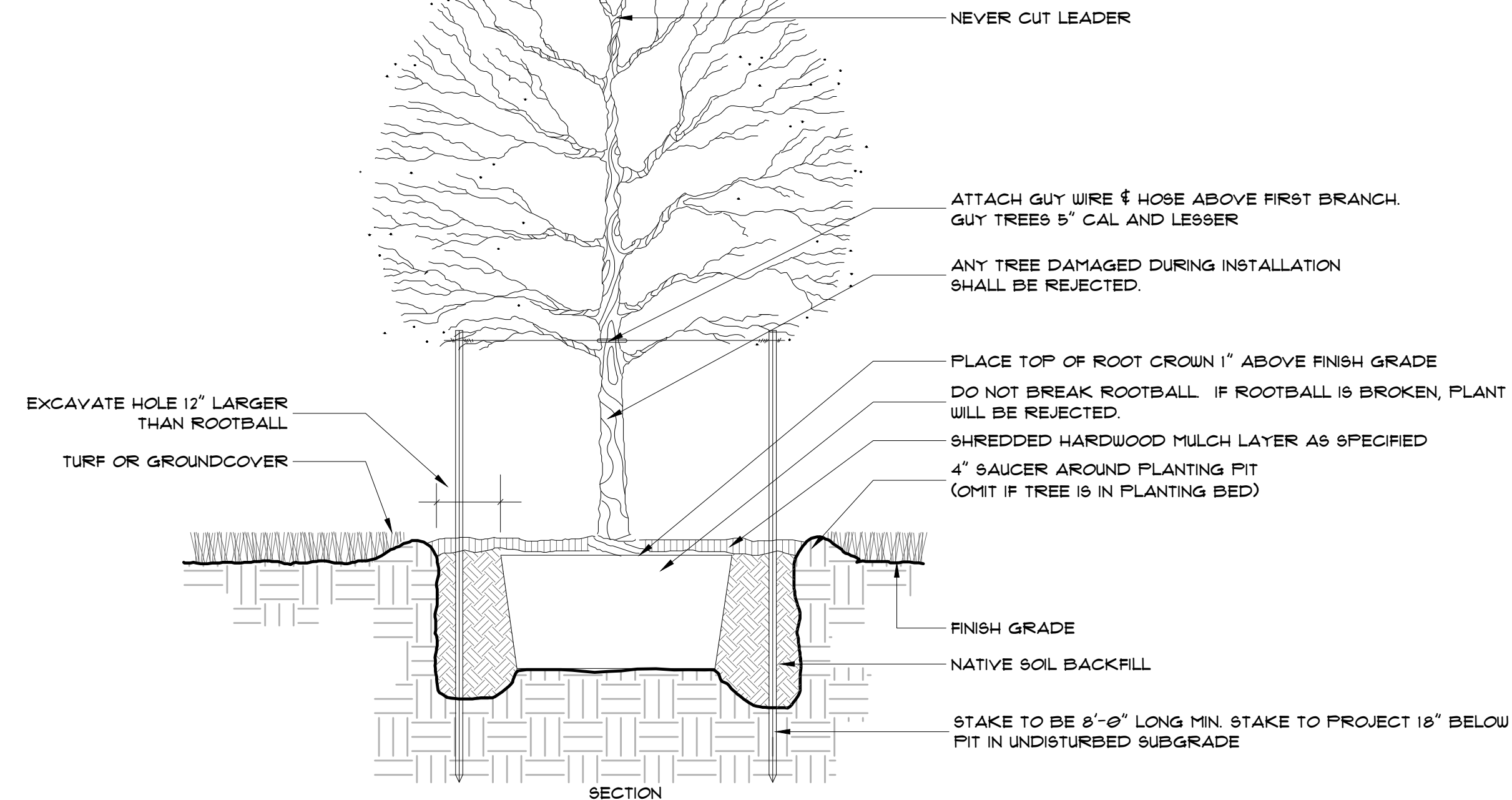
SHRUB PLANTING DETAIL
NTS: 1"=1'-0"



MULTI-TRUNK TREE PLANTING DETAIL ABOVE GROUND TREE STAKES
NTS: 1"=1'-0"



- NOTE:
1. ROOTBALL SIZE SHALL CONFORM TO THE 2004 AMERICAN ASSOCIATION OF NURSERYMEN STANDARDS.
 2. ROOTBALL WIDTH SHOULD BE DETERMINED BY THE FOLLOWING: 10" OF ROOTBALL FOR EACH CALIPER INCH OF TREE TRUNK.
 3. ROOTBALL DEPTH IS 2/3RDS OF THE DIAMETER.



SHADE TREE PLANTING DETAIL ABOVE GROUND TREE STAKES
NTS: 1"=1'-0"

ISSUED DATE:

PERMIT SET
OCT 28, 2023

BENNY AND LYDIA KIM DESIGN

PH: (206) 304-5317
EMAIL: bennykimdesign@outlook.com



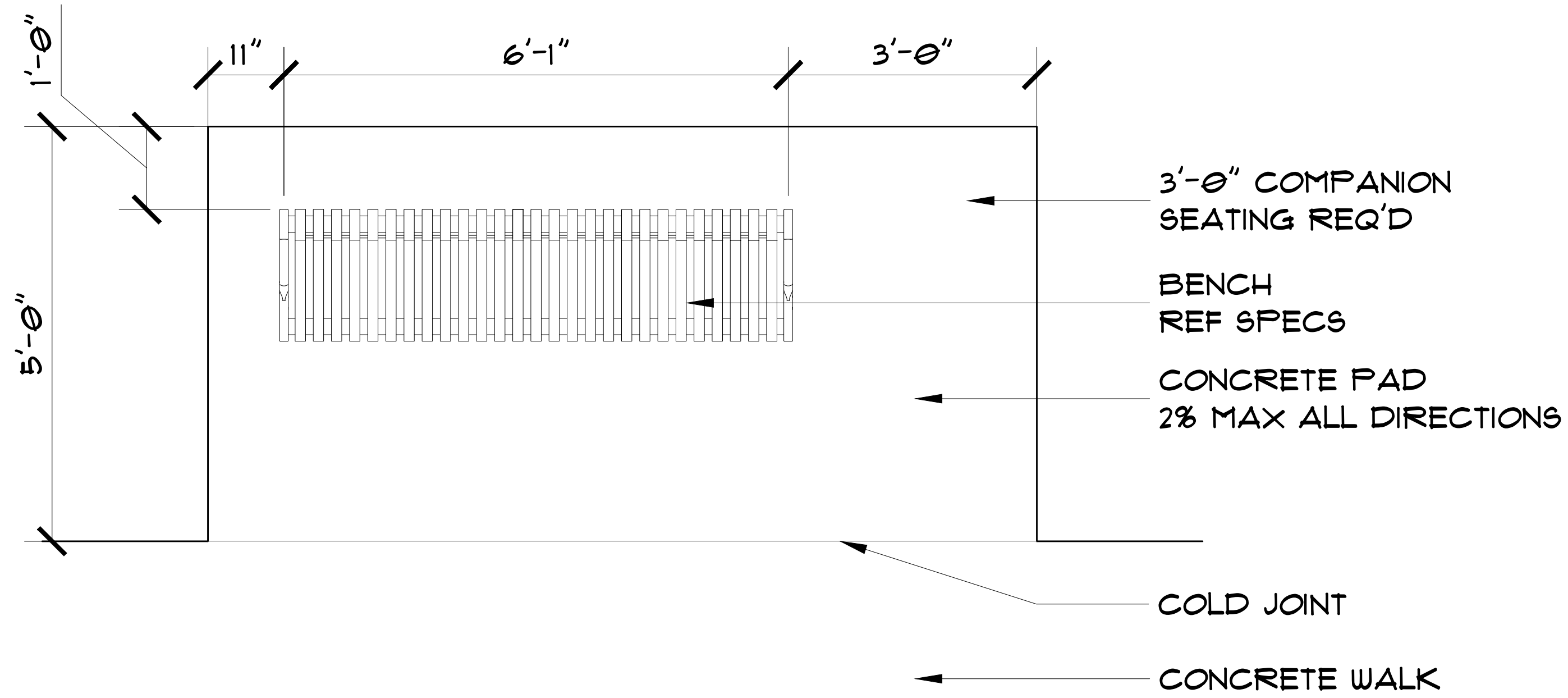
MARGARET ESTATE APARTMENT

9106 55TH AVE NE
MARYSVILLE WA 98270

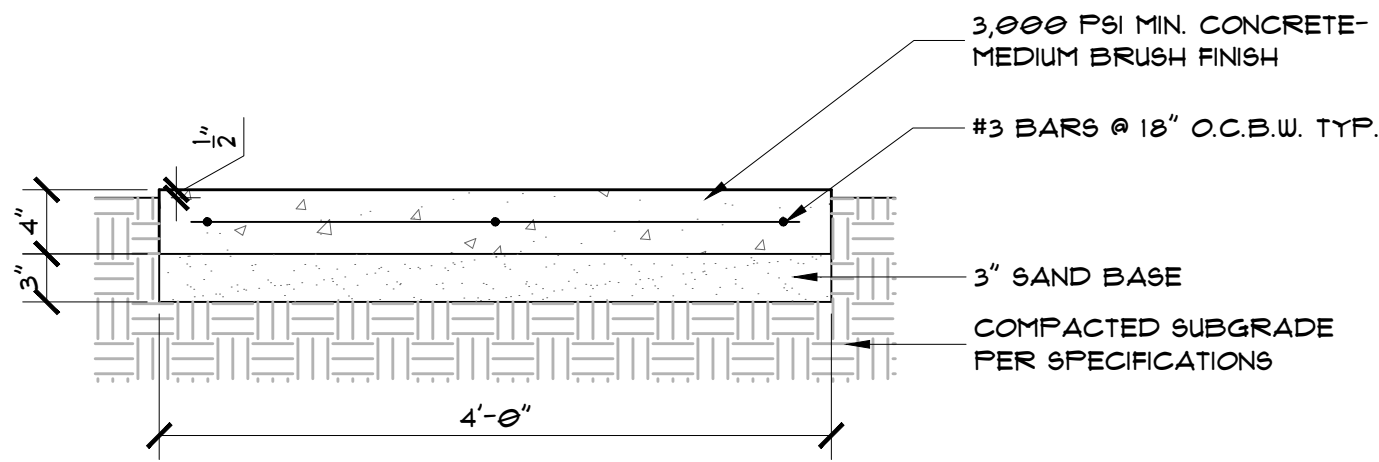
PLANTING DETAILS

FILE 2241

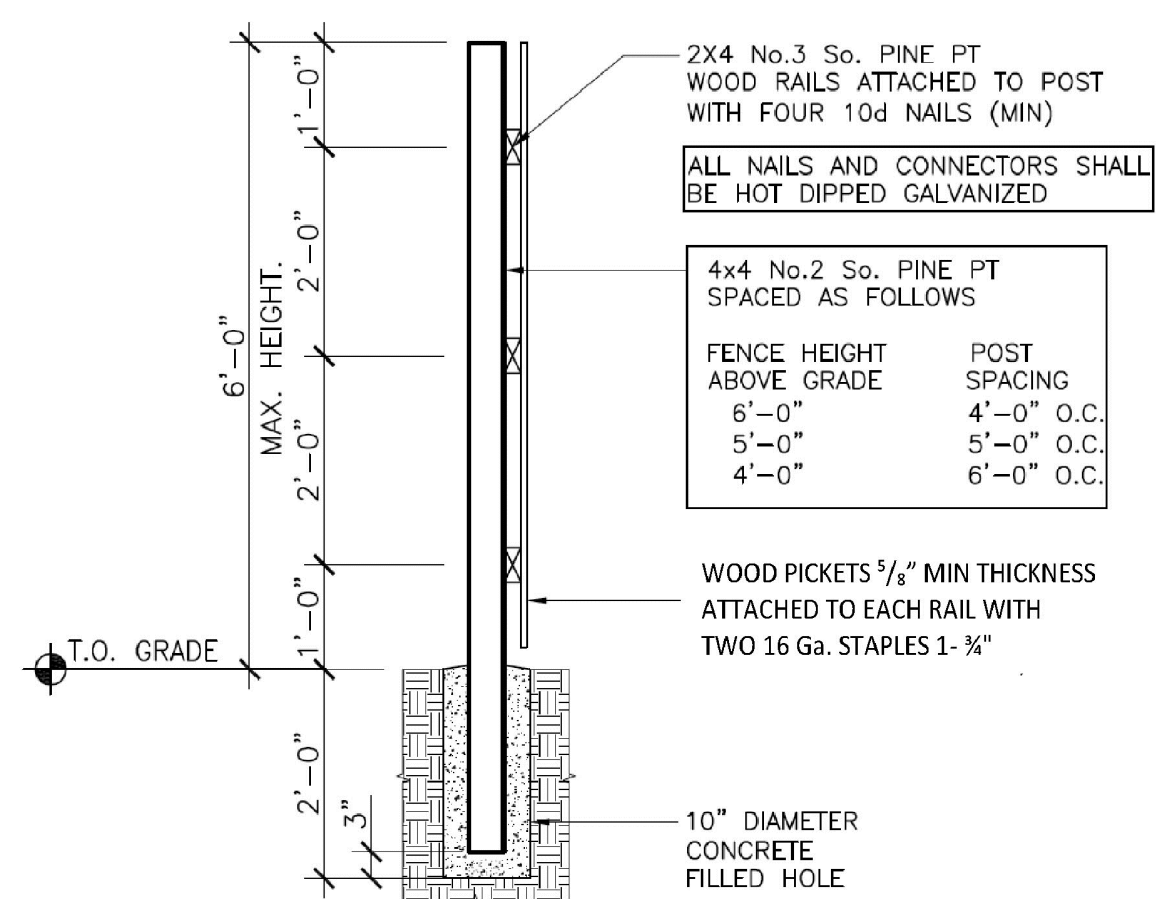
LI.04



CONCRETE SLAB LAYOUT FOR BENCH
NTS



CONCRETE SLAB FOR BENCH
1"=1'-0"



WOOD FENCE
NTS



WOOD BENCH & TRASH CAN
NTS

ONEpul®/MittN™ DOG WASTE STATIONS

ALL ALUMINUM • SCREENED SIGNAGE • 5-YEAR WARRANTY

Item# D022 (ONEpul®) Square Can Station

Item# D022-B (ONEpul®) Round Can Station

Item# D023 (ONEpul®) Mini Station

Item# D029 (MittN™) Square Can Station

Item# D024-B (MittN™) Round Can Station

Item# D027 (MittN™) Mini Station

3 ONEpul® & MittN™ MODELS: REGULAR & MINI

ONEpul® & MittN™ STATIONS

D002, D022, D023 With: SQUARE built-in lid or ROUND ventilated mesh with lid can system (can not included with Mini Station)

STATIONS INCLUDE:

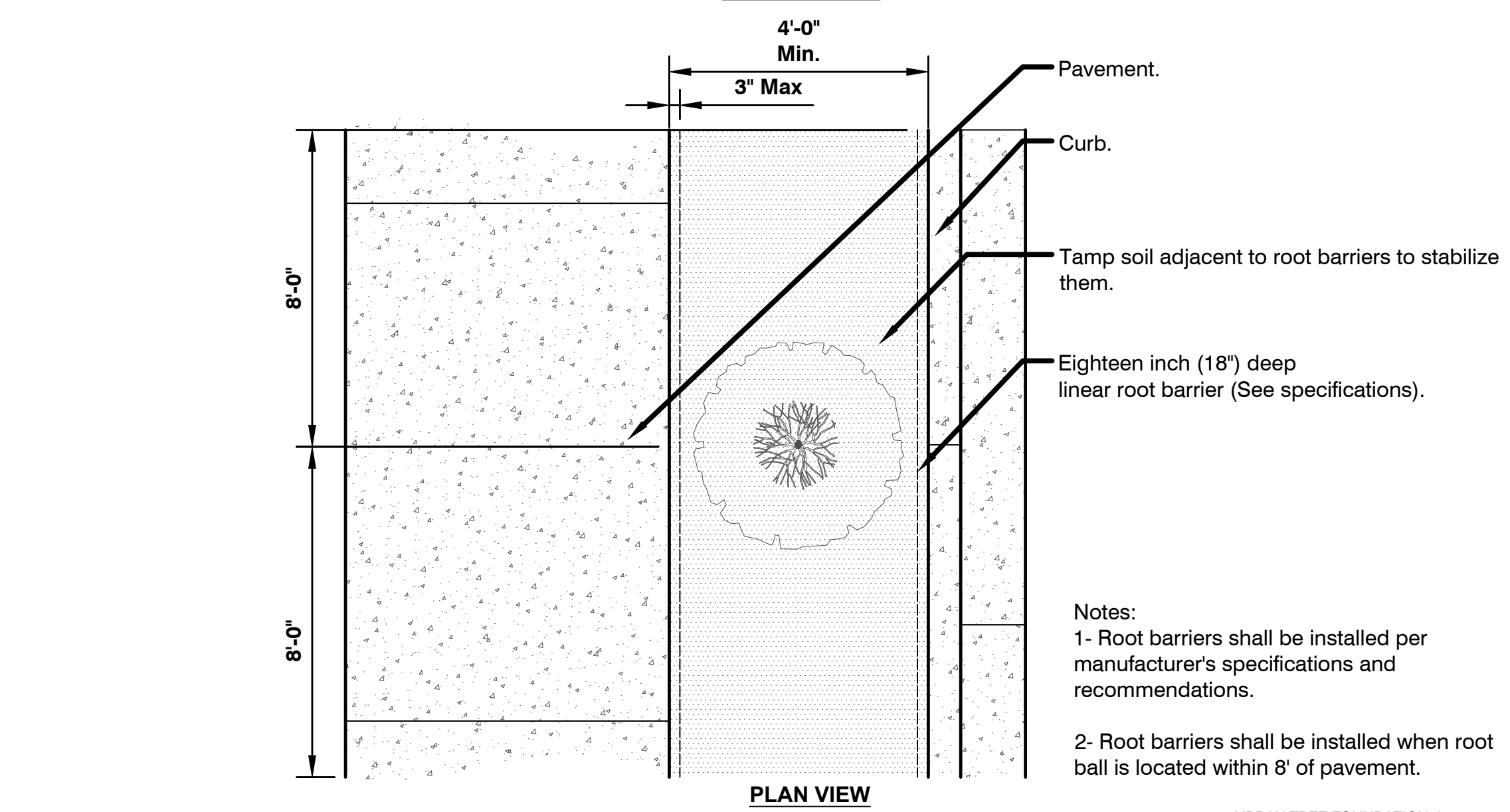
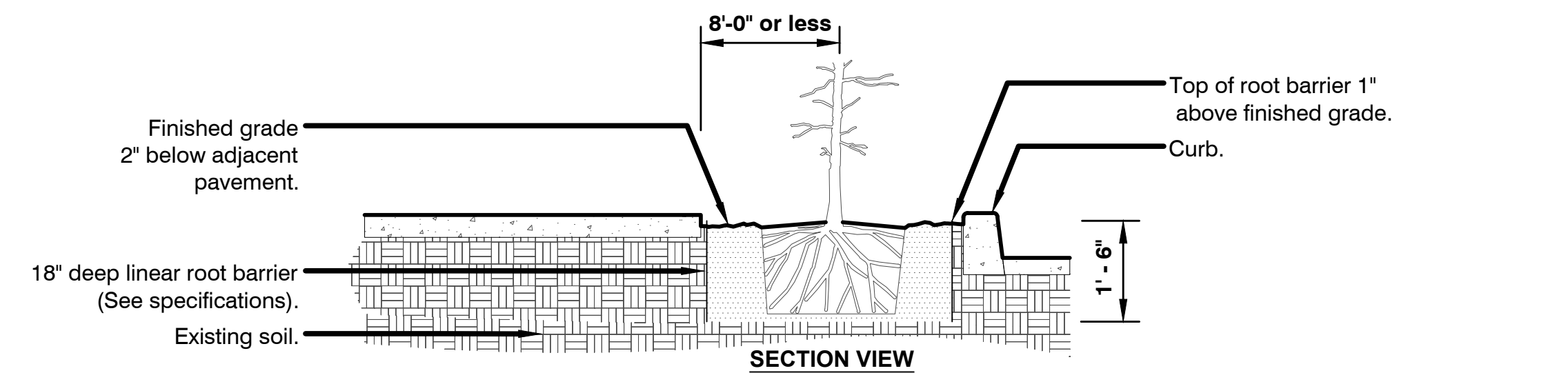
- Post
- Bag Dispenser
- 11 Gallon Square or 10 Gallon Round Can (not included with Mini Station)
- Hardware & Instructions
- 25 Can Liners (not included with Mini Station)
- 400 Waste Bags

Color: Green, Black

100% POWDER COATED (or Finish Your Choice)

NO MESS

ANOVA DOG WASTE STATION #D022
NTS



TREE ROOT BARRIER
NTS

ISSUED DATE:

PERMIT SET
OCT 28, 2023

BENNY AND LYDIA KIM DESIGN

Ph: (206) 304-5317
Email: bennykimdesign@outlook.com



MARGARET ESTATE APARTMENT

9106 55TH AVE NE
MARYSVILLE WA 98270

AMENITY DETAILS

FILE 2241

LI.05

URBAN TREE FOUNDATION © 2014
OPEN SOURCE FREE TO USE

IRRIGATION SCHEDULE

CRITICAL ANALYSIS

Generated: 2024-05-01 23:12

P.O.C. NUMBER: 01

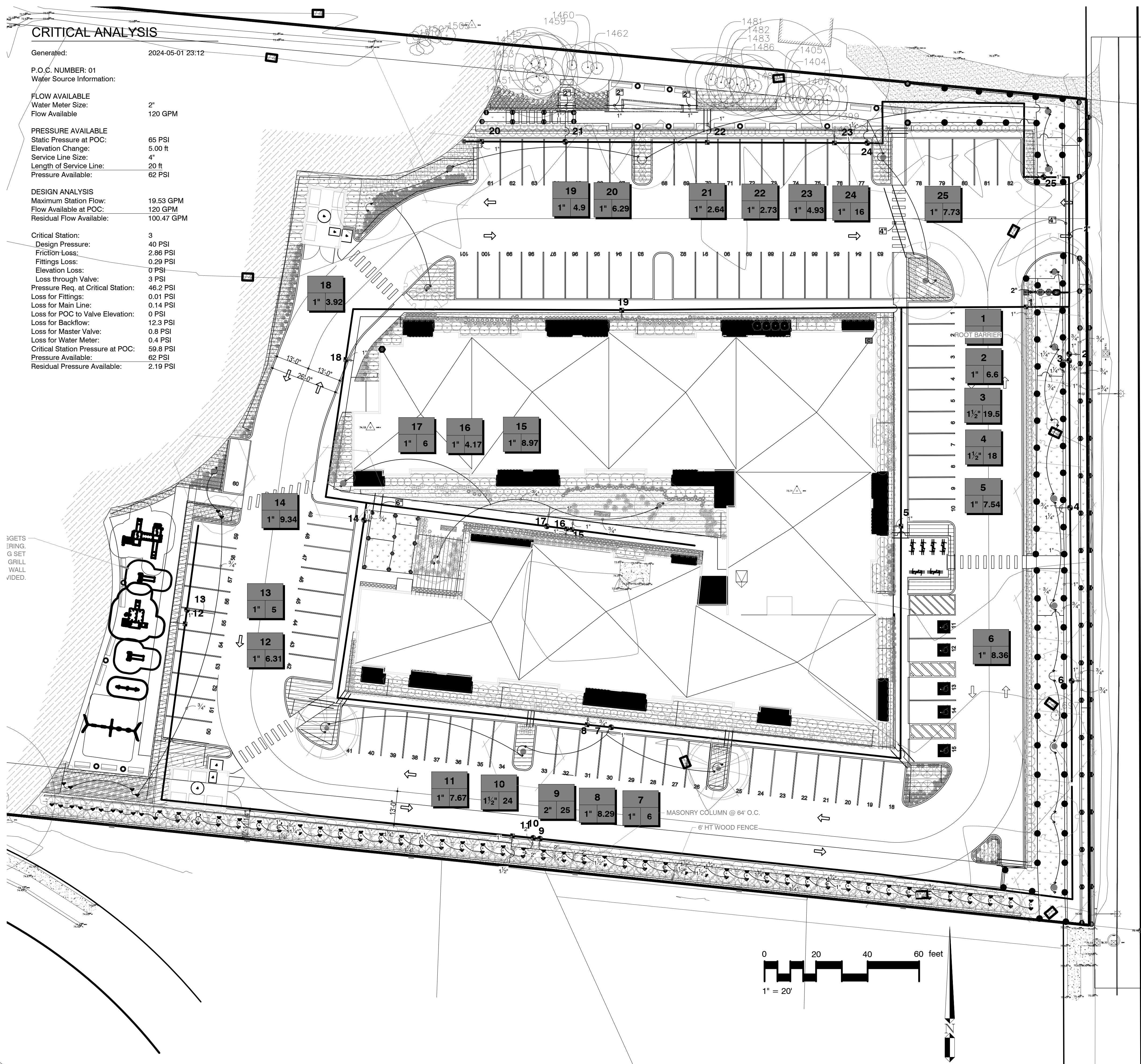
Water Source Information:

FLOW AVAILABLE
Water Meter Size: 2"
Flow Available: 120 GPM

PRESSURE AVAILABLE
Static Pressure at POC: 65 PSI
Elevation Change: 5.00 ft
Service Line Size: 4"
Length of Service Line: 20 ft
Pressure Available: 62 PSI

DESIGN ANALYSIS
Maximum Station Flow: 19.53 GPM
Flow Available at POC: 120 GPM
Residual Flow Available: 100.47 GPM

Critical Station: 3
Design Pressure: 40 PSI
Friction Loss: 2.86 PSI
Fittings Loss: 0.29 PSI
Elevation Loss: 0 PSI
Loss through Valve: 3 PSI
Pressure Rise at Critical Station: 46.2 PSI
Loss for Fittings: 0.01 PSI
Loss for Main Line: 0.14 PSI
Loss for POC to Valve Elevation: 0 PSI
Loss for Backflow: 12.3 PSI
Loss for Master Valve: 0.8 PSI
Loss for Water Meter: 0.4 PSI
Critical Station Pressure at POC: 59.8 PSI
Pressure Available: 62 PSI
Residual Pressure Available: 2.19 PSI



SYMBOL	MANUFACTURER/MODEL/DESCRIPTION
	Hunter MP Strip PROS-06-PRS40-CV-F Turf Rotator, 6in. pop-up with factory installed check valve, floguard, pressure regulated to 40 psi. MP Rotator nozzle on PRS40 body. LST=Ivory left strip, SST=Brown side strip, RST=Copper right strip.
	Hunter MP1000 PROS-06-PRS40-CV-F Turf Rotator, 6in. pop-up with check valve, floguard, pressure regulated to 40 psi, MP Rotator nozzle on PRS40 body. M=Maroon adj arc 90 to 210, L=Light Blue 210 to 270 arc, O=Olive 360 arc.
	Hunter MP2000 PROS-06-PRS40-CV-F Turf Rotator, 6in. pop-up with factory installed check valve, floguard, pressure regulated to 40 psi. MP Rotator nozzle on PRS40 body. K=Black adj arc 90-210, G=Green adj arc 210-270, R=Red 360 arc.
	Hunter MP815 PROS-06-PRS40-CV-F Turf Rotator, 6in. pop-up with check valve, floguard, pressure regulated to 40 psi, MP Rotator nozzle on PRS40 body. M=Maroon and Gray adj arc 90 to 210, L=Light Blue and Gray 210 to 270 arc, O=Olive and Gray 360 arc.
	Hunter PCB Flood Bubbler, 1/2in. FIPT.
SYMBOL	MANUFACTURER/MODEL/DESCRIPTION
	Rain Bird XFCZ-100-IVMQ 1" Wide Flow IVM Drip Control Kit for Commercial Applications. 1in. Ball Valve with 1in. PESBVM Smart Valve w/ factory installed IVM-SOL 0.3-20 gpm and 1in. Pressure Regulating 40psi Quick-Check Basket Filter 0.3-20 gpm
	Area to Receive Dripline Rain Bird XFCV-06-18 XFCV On-Surface Landscape Dripline with a Heavy-Duty 3.5 psi Check Valve, 0.6 GPH emitters at 18" O.C. Dripline laterals spaced at 24" apart, with emitters offset for triangular pattern. Great for elevation change. Specify XF insert fittings.
	Area to Receive Dripline Rain Bird XFS-CV-06-18 XFS-CV Sub-Surface and On-Surface Landscape Dripline with a Heavy-Duty 4.3 psi Check Valve, 0.6 GPH emitters at 18" O.C. Dripline laterals spaced at 18" apart, with emitters offset for triangular pattern. Specify XF insert fittings.
SYMBOL	MANUFACTURER/MODEL/DESCRIPTION
	Hunter ICV-G 1" / 1-1/2" / 2" 1in., 1-1/2in., 2in., and 3in. Plastic Electric Remote Control Valves, Globe Configuration, with NPT Threaded Inlet/Outlet, for Commercial/Municipal Use.
	Landscape Products Inc. BBV 1/2in., 3/4in., 1in., 1-1/4in., 1-1/2in., 2in., 2-1/2in., 3in. Full Port Brass Ball Valve. Suitable for a full range of liquids and gases in residential and commercial applications.
	Hunter IBV 2" 1in., 1-1/2in., 2in., and 3in. Brass Electric Master Valve, Globe Configuration, with NPT Threaded Inlet/Outlet, for Commercial/Municipal Use.
	Drain Valve King Drain Valve
	Febc0 825YA 2" Reduced Pressure Backflow Preventer
	Hunter A2C-75D-M 75-Station Decoder controller in an outdoor gray metal wall mount enclosure.
	Hunter WSS Wireless Solar, rain freeze sensor with outdoor interface, connects to Hunter PCC, Pro-C, and I-Core Controllers, install as noted. Includes 10 year lithium battery and rubber module cover, and gutter mount bracket.
	Hunter HC-150-FLOW 1-1/2in. for use with Hydrawise enabled controller to monitor flow and provide system alerts. Also functions as stand alone flow totalizer/sub meter on any residential or commercial irrigation system.
	Water Meter 2"
	Irrigation Lateral Line: PVC Class 200 SDR 21 3/4" 2"
	Irrigation Mainline: PVC Schedule 40 2"
	Pipe Sleeve: PVC Schedule 40 : 2" / 4" / 6"
	Valve Callout # Valve Number # Valve Flow # Valve Size

ISSUED DATE:
PERMIT SET
OCT 28, 2023

BENNY AND LYDIA KIM DESIGN
KIM
Ph: (206) 384-3311
Email: bennykimdesign@outlook.com

MARGARET ESTATE APARTMENT
9706 55TH AVE NE
MARYSVILLE WA 98270

FILE 2241
L2.01