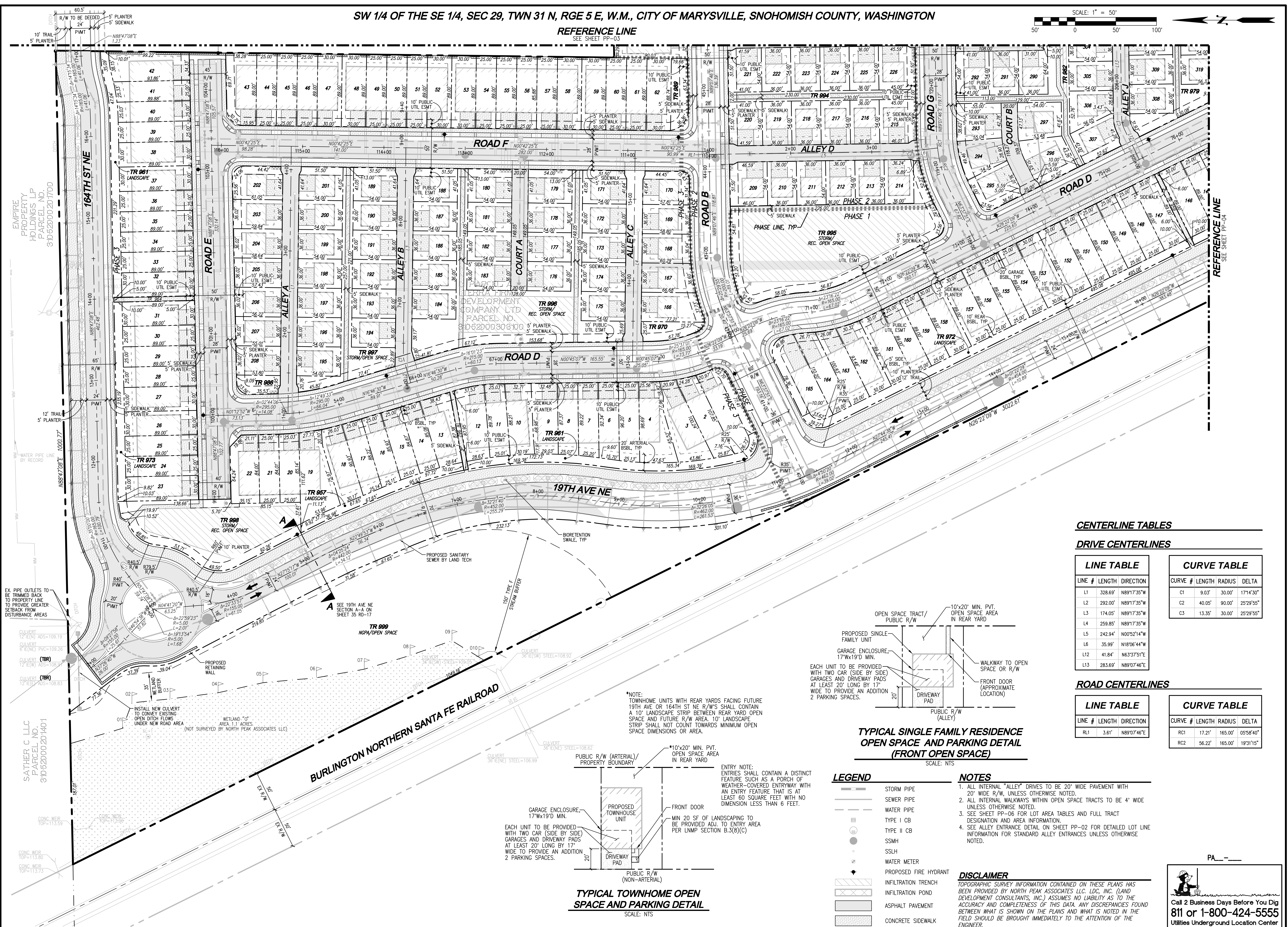
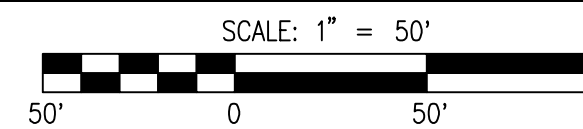


SW 1/4 OF THE SE 1/4, SEC 29, TWN 31 N, RGE 5 E, W.M., CITY OF MARYSVILLE, SNOHOMISH COUNTY, WASHINGTON

REFERENCE LINE
SEE SHEET PP-03



CENTERLINE TABLES

DRIVE CENTERLINES

LINE TABLE

LINE #	LENGTH	DIRECTION
L1	328.69'	N89°17'35"W
L2	292.00'	N89°17'35"W
L3	174.05'	N89°17'35"W
L4	259.85'	N89°17'35"W
L5	242.94'	N00°52'14"W
L6	35.99'	N18°06'44"W
L12	41.84'	N63°37'51"E
L13	283.69'	N89°07'46"E

CURVE TABLE

CURVE #	LENGTH	RADIUS	DELTA
C1	9.03'	30.00'	171°13'00"
C2	40.05'	90.00'	25°29'55"
C3	13.35'	30.00'	25°29'55"

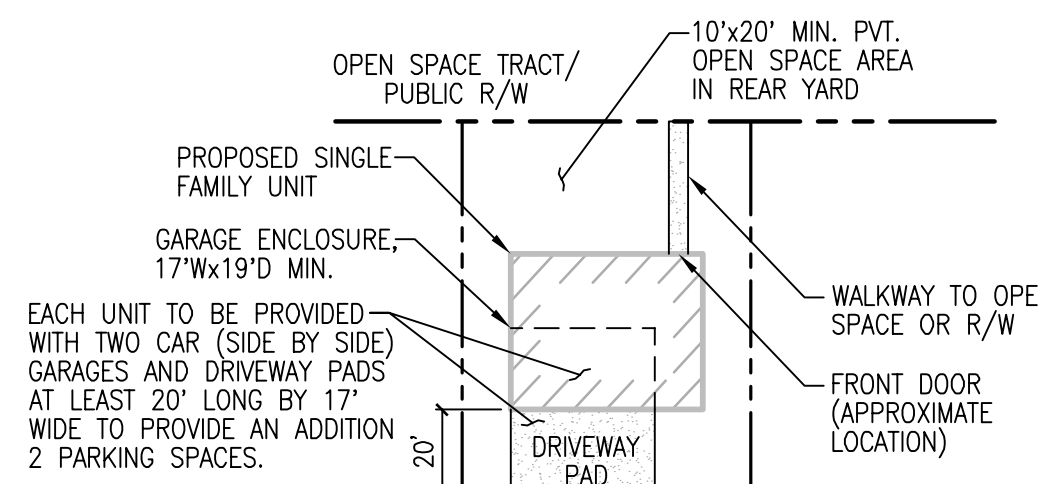
ROAD CENTERLINES

LINE TABLE

LINE #	LENGTH	DIRECTION
RL1	3.61'	N89°07'46"E

CURVE TABLE

CURVE #	LENGTH	RADIUS	DELTA
RC1	17.21'	165.00'	05°58'40"
RC2	56.22'	165.00'	19°31'15"



TYPICAL SINGLE FAMILY RESIDENCE OPEN SPACE AND PARKING DETAIL (FRONT OPEN SPACE)
SCALE: NTS

TYPICAL TOWNHOME OPEN SPACE AND PARKING DETAIL
SCALE: NTS

LEGEND

- STORM PIPE
- SEWER PIPE
- WATER PIPE
- TYPE I CB
- TYPE II CB
- SSMH
- SSLH
- WATER METER
- PROPOSED FIRE HYDRANT
- INFILTRATION TRENCH
- INFILTRATION POND
- ASPHALT PAVEMENT
- CONCRETE SIDEWALK

NOTES

1. ALL INTERNAL "ALLEY" DRIVES TO BE 20' WIDE PAVEMENT WITH 20' WIDE R/W, UNLESS OTHERWISE NOTED.
2. ALL INTERNAL WALKWAYS WITHIN OPEN SPACE TRACTS TO BE 4' WIDE UNLESS OTHERWISE NOTED.
3. SEE SHEET PP-06 FOR LOT AREA TABLES AND FULL TRACT DESIGNATION AND AREA INFORMATION.
4. SEE ALLEY ENTRANCE DETAIL ON SHEET PP-02 FOR DETAILED LOT LINE INFORMATION FOR STANDARD ALLEY ENTRANCES UNLESS OTHERWISE NOTED.

DISCLAIMER

TOPOGRAPHIC SURVEY INFORMATION CONTAINED ON THESE PLANS HAS BEEN PROVIDED BY NORTH PEAK ASSOCIATES LLC, INC. (LAND DEVELOPMENT CONSULTANTS, INC.) ASSUMES NO LIABILITY AS TO THE ACCURACY AND COMPLETENESS OF THIS DATA, ANY DISCREPANCIES FOUND BETWEEN WHAT IS SHOWN ON THE PLANS AND WHAT IS NOTED IN THE FIELD SHOULD BE BROUGHT IMMEDIATELY TO THE ATTENTION OF THE ENGINEER.

REVISIONS
NO. DATE DESCRIPTION
1 7-18-22 REVISIONS PER CITY OF MARYSVILLE 2ND PRELIM PLAT REVIEW
BY JAJ

LDC
Surveying
Engineering
Planning

Kent
Woodinville
20210 142nd Avenue NE
Woodinville, WA 98072
www.LDCorp.com
T 425.806.1869 F 425.482.2893

PULTE GROUP
MARYSVILLE 10 DEGREES
PRELIMINARY PLAT

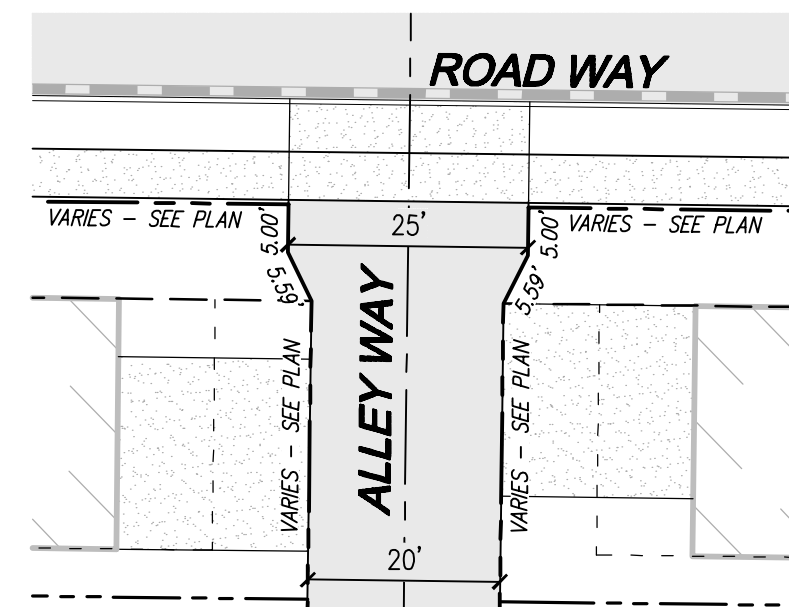


JOB NUMBER: C21150
DRAWING NAME: C21150PP-PP-PL
DESIGNER: JAJ
DRAFTING BY: RCR
DATE: 8-18-21
SCALE: 1"=50'
JURISDICTION: MARYSVILLE

PP-02
SHEET 2 OF 6

Call 2 Business Days Before You Dig
811 or 1-800-424-5555
Utilities Underground Location Center

Drawing: P:\City\2021\02-150 Marysville 10 Degrees\Drawings\Pre-Plat\C21150PP-PP-PL.dwg Plotted: Aug 08, 2022 - 5:10pm



ALLEY ENTRANCE DETAIL
SCALE: 1"=20'

LEGEND

- STORM PIPE
- SEWER PIPE
- WATER PIPE
- TYPE I CB
- TYPE II CB
- SSMH
- SSLH
- WATER METER
- PROPOSED FIRE HYDRANT
- INFILTRATION TRENCH
- INFILTRATION POND
- ASPHALT PAVEMENT
- CONCRETE SIDEWALK

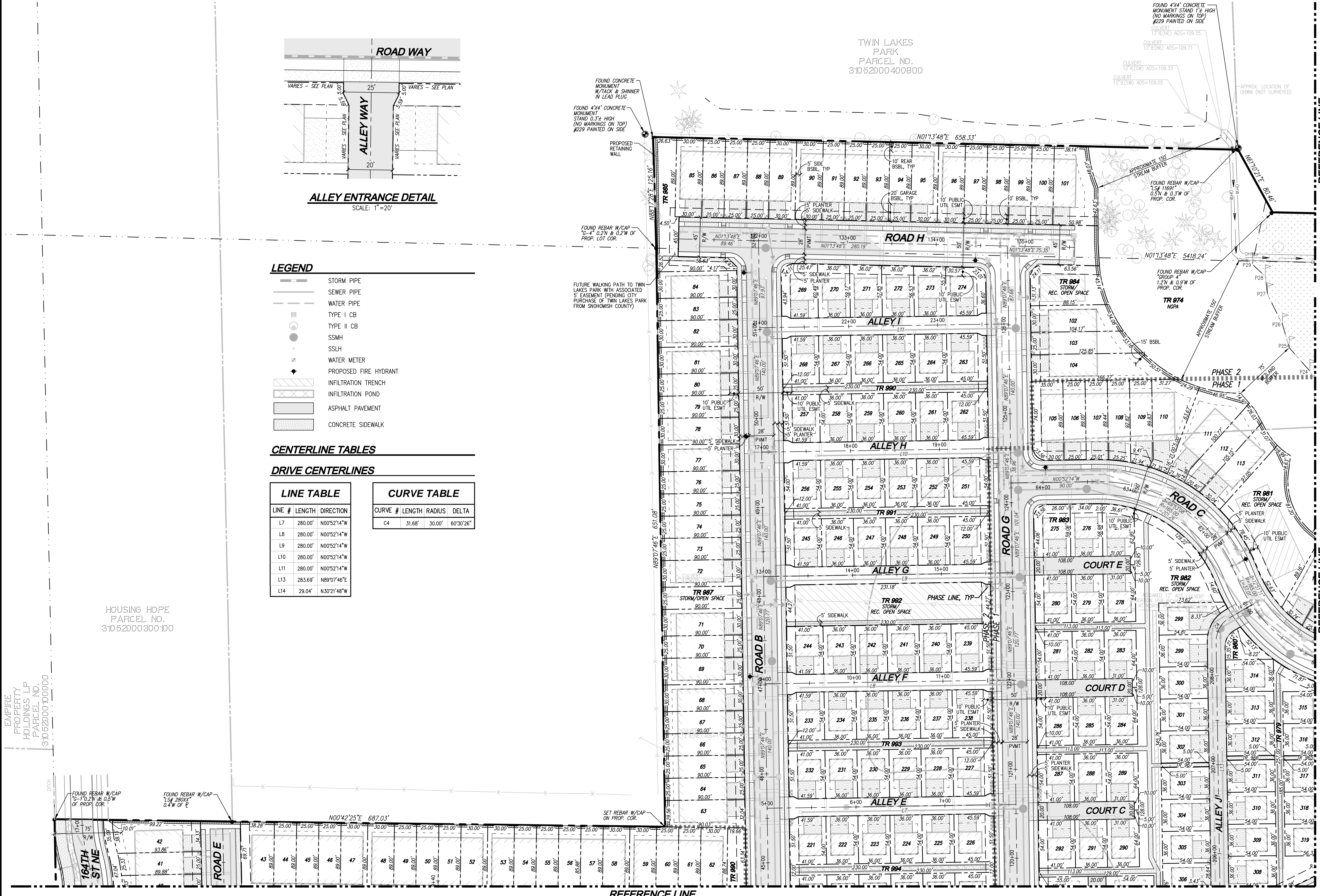
CENTERLINE TABLES

DRIVE CENTERLINES

LINE TABLE			CURVE TABLE			
LINE #	LENGTH	DIRECTION	CURVE #	LENGTH	RADIUS	DELTA
L7	280.00'	N00°52'14"W	C4	31.68'	30.00'	60°30'26"
L8	280.00'	N00°52'14"W				
L9	280.00'	N00°52'14"W				
L10	280.00'	N00°52'14"W				
L11	280.00'	N00°52'14"W				
L13	283.69'	N89°07'46"E				
L14	29.04'	N30°21'48"W				

HOUSING HOPE
PARCEL NO.
31062000300100

Drawing: P:\Civil\2023\021-150 Marysville 10 Degrees\Drawings\Pre-Plan\021150PP-PP-03.dwg
 Plotted: Aug 08, 2022 - 5:10pm
 EMPIRE
 PROPERTY
 HOLDINGS LP
 PARCEL NO.
 310620001000000



REFERENCE LINE
SEE SHEET PP-02

NOTES

- ALL INTERNAL "ALLEY" DRIVES TO BE 20' WIDE PAVEMENT WITH 20' WIDE R/W, UNLESS OTHERWISE NOTED.
- ALL INTERNAL WALKWAYS WITHIN OPEN SPACE TRACTS TO BE 4' WIDE UNLESS OTHERWISE NOTED.
- SEE SHEET PP-06 FOR LOT AREA TABLES AND FULL TRACT DESIGNATION AND AREA INFORMATION.
- SEE ALLEY ENTRANCE DETAIL ON THIS SHEET FOR DETAILED LOT LINE INFORMATION FOR STANDARD ALLEY ENTRANCES UNLESS OTHERWISE NOTED.

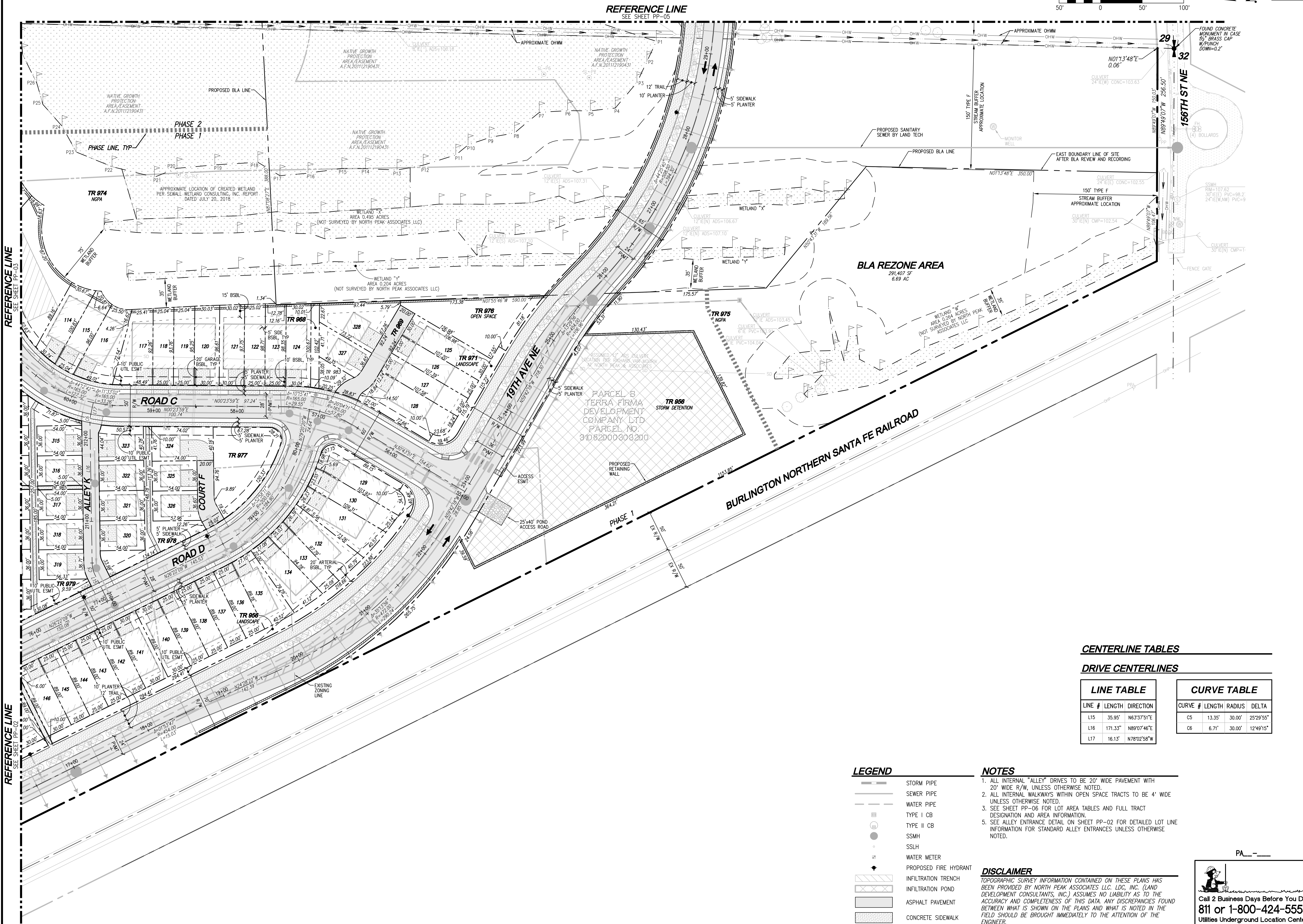
DISCLAIMER

TOPOGRAPHIC SURVEY INFORMATION CONTAINED ON THESE PLANS HAS BEEN PROVIDED BY NORTH PEAK ASSOCIATES LLC, INC. (LAND DEVELOPMENT CONSULTANTS, INC.) ASSUMES NO LIABILITY AS TO THE ACCURACY AND COMPLETENESS OF THIS DATA. ANY DISCREPANCIES FOUND BETWEEN WHAT IS SHOWN ON THE PLANS AND WHAT IS NOTED IN THE FIELD SHOULD BE BROUGHT IMMEDIATELY TO THE ATTENTION OF THE ENGINEER.

Call 2 Business Days Before You Dig
811 or 1-800-424-5555
 Utilities Underground Location Center

BY	JAJ	
	REVISIONS	
NO.	DATE	DESCRIPTION
1	7-18-22	REVISIONS PER CITY OF MARYSVILLE 2ND PRELIM PLAT REVIEW
Surveying Engineering Planning		
Kent Olympia Woodinville 20210 142nd Avenue NE Woodinville, WA 98072 www.LDCcorp.com T 425.806.1869 F 425.482.2893		
PULTE GROUP MARYSVILLE 10 DEGREES PRELIMINARY PLAT		
JOB NUMBER: C21150 DRAWING NAME: C21150PP-PP-03 DESIGNER: JAJ DRAFTING BY: RCR DATE: 8-18-21 SCALE: 1"=50' JURISDICTION: MARYSVILLE		
PP-03 SHEET 3 OF 6		

SW 1/4 OF THE SE 1/4, SEC 29, TWN 31 N, RGE 5 E, W.M., CITY OF MARYSVILLE, SNOHOMISH COUNTY, WASHINGTON



REFERENCE LINE
SEE SHEET PP-03

REFERENCE LINE
SEE SHEET PP-02

REFERENCE LINE
SEE SHEET PP-05

LEGEND

- STORM PIPE
- SEWER PIPE
- WATER PIPE
- TYPE I CB
- TYPE II CB
- SSMH
- SSLH
- WATER METER
- PROPOSED FIRE HYDRANT
- INFILTRATION TRENCH
- INFILTRATION POND
- ASPHALT PAVEMENT
- CONCRETE SIDEWALK

NOTES

1. ALL INTERNAL "ALLEY" DRIVES TO BE 20' WIDE PAVEMENT WITH 20' WIDE R/W, UNLESS OTHERWISE NOTED.
2. ALL INTERNAL WALKWAYS WITHIN OPEN SPACE TRACTS TO BE 4' WIDE UNLESS OTHERWISE NOTED.
3. SEE SHEET PP-06 FOR LOT AREA TABLES AND FULL TRACT DESIGNATION AND AREA INFORMATION.
5. SEE ALLEY ENTRANCE DETAIL ON SHEET PP-02 FOR DETAILED LOT LINE INFORMATION FOR STANDARD ALLEY ENTRANCES UNLESS OTHERWISE NOTED.

DISCLAIMER

TOPOGRAPHIC SURVEY INFORMATION CONTAINED ON THESE PLANS HAS BEEN PROVIDED BY NORTH PEAK ASSOCIATES LLC, LDC, INC. (LAND DEVELOPMENT CONSULTANTS, INC.) ASSUMES NO LIABILITY AS TO THE ACCURACY AND COMPLETENESS OF THIS DATA. ANY DISCREPANCIES FOUND BETWEEN WHAT IS SHOWN ON THE PLANS AND WHAT IS NOTED IN THE FIELD SHOULD BE BROUGHT IMMEDIATELY TO THE ATTENTION OF THE ENGINEER.

CENTERLINE TABLES

DRIVE CENTERLINES

LINE TABLE

LINE #	LENGTH	DIRECTION
L15	35.95'	N63°37'51"E
L16	171.33'	N89°07'46"E
L17	16.13'	N78°02'58"W

CURVE TABLE

CURVE #	LENGTH	RADIUS	DELTA
C5	13.35'	30.00'	25°29'55"
C6	6.71'	30.00'	12°49'15"

PA _ _ _

Call 2 Business Days Before You Dig
811 or 1-800-424-5555
Utilities Underground Location Center

REVISIONS

NO.	DATE	DESCRIPTION
1	7-18-22	REVISIONS PER CITY OF MARYSVILLE 2ND PRELIM PLAT REVIEW

LDC
Surveying
Engineering
Planning

Kent
Woodinville
Woodinville, WA 98072
www.LDCorp.com

Olympia
20210 142nd Avenue NE
Woodinville, WA 98072
T 425.806.1869 F 425.482.2893

PULTE GROUP
MARYSVILLE 10 DEGREES
PRELIMINARY PLAT

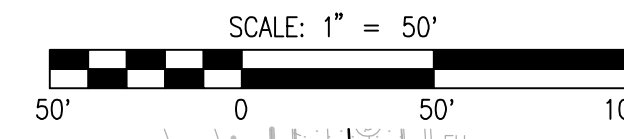


JOB NUMBER: C21150
DRAWING NAME: C21150PP-PP-PL
DESIGNER: JAJ
DRAFTING BY: RCR
DATE: 8-18-21
SCALE: 1"=50'
JURISDICTION: MARYSVILLE

PP-04
SHEET 4 OF 6

Drawing: P:\Civil\2021\C21150 Marysville 10 Degrees\Drawings\Pre-Plat\C21150PP-PP-PL.dwg Plotter: Aug 08, 2022 - 5:10pm

SW 1/4 OF THE SE 1/4, SEC 29, TWN 31 N, RGE 5 E, W.M., CITY OF MARYSVILLE, SNOHOMISH COUNTY, WASHINGTON



LEGEND

	STORM PIPE
	SEWER PIPE
	WATER PIPE
	TYPE I CB
	TYPE II CB
	SSMH
	SSLH
	WATER METER
	PROPOSED FIRE HYDRANT
	INFILTRATION TRENCH
	INFILTRATION POND
	ASPHALT PAVEMENT
	CONCRETE SIDEWALK

REVISIONS

NO.	DATE	DESCRIPTION
1	7-18-22	REVISIONS PER CITY OF MARYSVILLE 2ND PRELIM PLAT REVIEW

LDC
 Surveying
 Engineering
 Planning

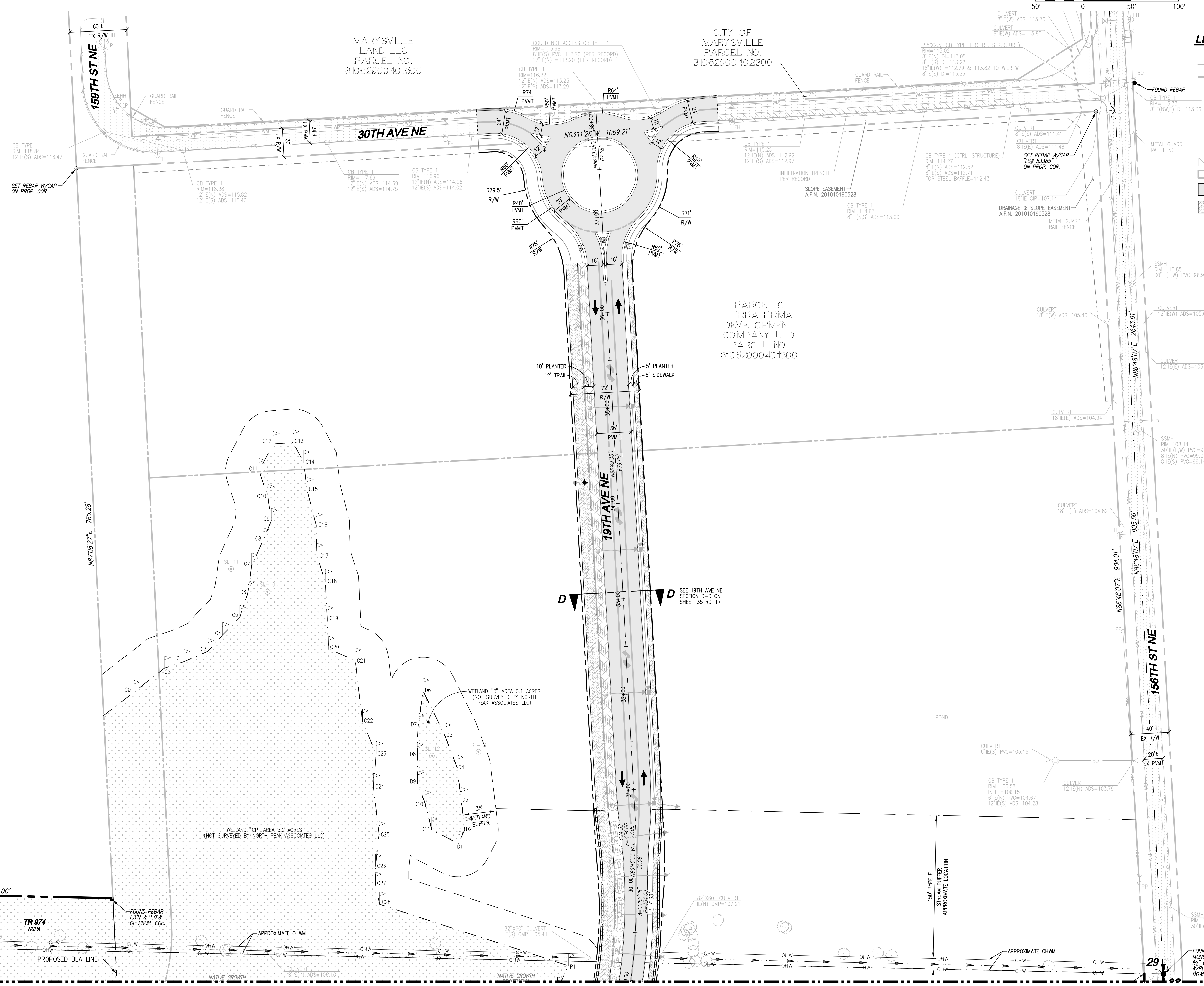
Kent
 Woodinville
 20210 142nd Avenue NE
 Woodinville, WA 98072
 www.LDCcorp.com

Olympia
 Kent
 T 425.806.1869
 F 425.482.2893

PULTE GROUP
MARYSVILLE 10 DEGREES
 PRELIMINARY PLAT



JOB NUMBER: C21150
 DRAWING NAME: C21150PP-PP-PA
 DESIGNER: JAJ
 DRAFTING BY: RCR
 DATE: 8-18-21
 SCALE: 1"=50'
 JURISDICTION: MARYSVILLE



- NOTES**
- ALL INTERNAL "ALLEY" DRIVES TO BE 20' WIDE PAVEMENT WITH 20' WIDE R/W, UNLESS OTHERWISE NOTED.
 - SEE SHEET PP-06 FOR LOT AREA TABLES AND FULL TRACT DESIGNATION AND AREA INFORMATION.

DISCLAIMER
 TOPOGRAPHIC SURVEY INFORMATION CONTAINED ON THESE PLANS HAS BEEN PROVIDED BY NORTH PEAK ASSOCIATES LLC, LDC, INC. (LAND DEVELOPMENT CONSULTANTS, INC.) ASSUMES NO LIABILITY AS TO THE ACCURACY AND COMPLETENESS OF THIS DATA. ANY DISCREPANCIES FOUND BETWEEN WHAT IS SHOWN ON THE PLANS AND WHAT IS NOTED IN THE FIELD SHOULD BE BROUGHT IMMEDIATELY TO THE ATTENTION OF THE ENGINEER.

Call 2 Business Days Before You Dig
811 or 1-800-424-5555
 Utilities Underground Location Center

Drawing: P:\Civil\2021\150 Marysville 10 Degrees\Drawings\Pre-Plat\C21150PP-PP-PA.dwg
 Plotter: Aug 08, 2022 - 5:10pm
 REFERENCE LINE SEE SHEET PP-03
 REFERENCE LINE SEE SHEET PP-04

