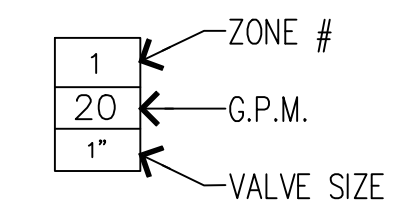


IRRIGATION SCHEDULE	
SYMBOL	DESCRIPTION
□	1" METER (REFER TO CIVIL DRAWINGS)
□	POINT OF CONNECTION : (1) 1" BRASS GATE VALVE (1) WILKENS 950XL1-U-S, 1-1/2" DOUBLE CHECK VALVE ASSEMBLY (1) HUNTER HQ5-RC, 1" QUICK COUPLING VALVE (1) HUNTER ICV-101G, 2" MASTER VALVE
⊠	HUNTER PCC-400-PCM-1600, 20 STATION MODULAR IRRIGATION CONTROLLER W/ HUNTER WSS-SEN, WIRELESS ET/RAIN/FREEZE SENSOR
□	HUNTER ICV-151G-FS, 1-1/2" AUTOMATIC VALVE
□	HUNTER ICV-101G-FS, 1" AUTOMATIC VALVE
⊙	HUNTER HQ-5-RC, 1" QUICK COUPLING VALVE
—	2-1/2" MAINLINE, SCHEDULE 40 PVC
==	CLASS 200 PVC LATERAL LINE (3/4" UNLESS NOTED OTHERWISE)
===	SLEEVING (2X SIZE OF INTERIOR PIPE), SCHEDULE 40 PVC

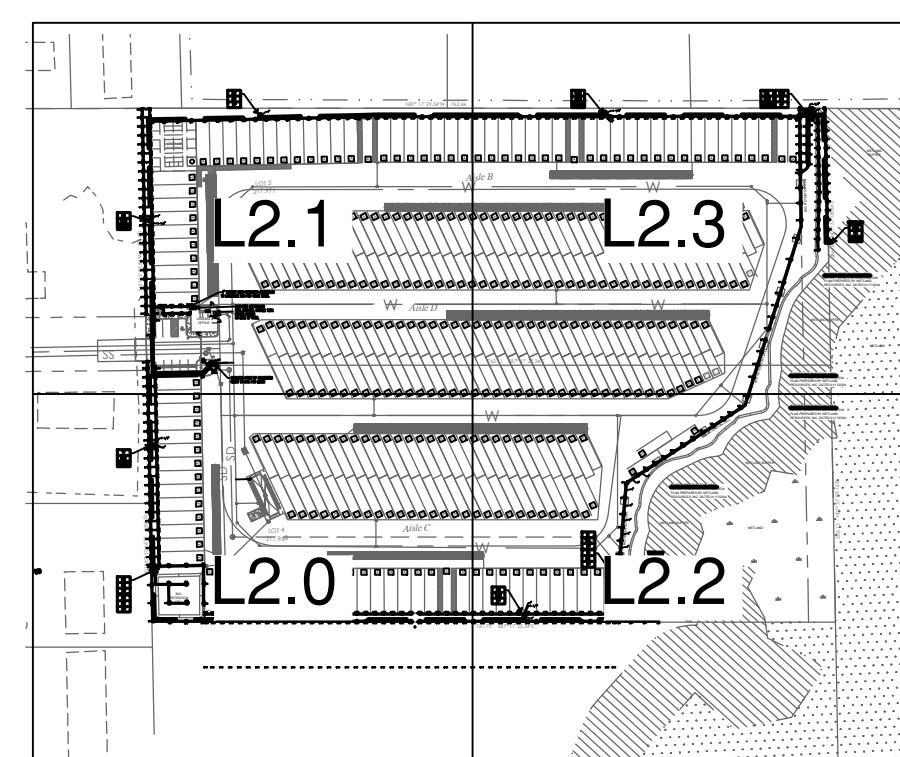
IRRIGATION SCHEDULE		P.S.I.	RAD.	G.P.M.
MP3	HUNTER PROS-12-PRS40-MP3000 90, 12" POP-UP ROTATOR	40	30'	1.82
MP2	HUNTER PROS-12-PRS40-MP2000 360, 12" POP-UP ROTATOR	40	20'	1.48
MP2	HUNTER PROS-12-PRS40-MP2000 90, 12" POP-UP ROTATOR	40	20'	0.77
MP2	HUNTER PROS-12-PRS40-MP2000 90, 12" POP-UP ROTATOR	40	20'	0.43
MP1	HUNTER PROS-12-PRS40-MP1000 360, 12" POP-UP ROTATOR	40	14'	0.84
MP1	HUNTER PROS-12-PRS40-MP1000 90, 12" POP-UP ROTATOR	40	14'	0.42
MP1	HUNTER PROS-12-PRS40-MP1000 90, 12" POP-UP ROTATOR	40	14'	0.21
MPC	HUNTER PROS-12-PRS40-MPCORNER, 12" POP-UP ROTATOR	40	14'	0.19
MPSR	HUNTER PROS-12-PRS40-MP815-360, 12" POP-UP ROTATOR	40	10'	0.78
MPSR	HUNTER PROS-12-PRS40-MP815-90, 12" POP-UP ROTATOR	40	10'	0.42
MPSR	HUNTER PROS-12-PRS40-MP815-90, 12" POP-UP ROTATOR	40	10'	0.23
MPS	HUNTER PROS-12-PRS40-MPSIDESTRIP, 12" POP-UP ROTATOR	40	5'X30'	0.44
MPS	HUNTER PROS-12-PRS40-MPRIGHTCORNER, 12" POP-UP ROTATOR	40	5'X15'	0.22
MPS	HUNTER PROS-12-PRS40-MPLEFTCORNER, 12" POP-UP ROTATOR	40	5'X15'	0.22

PIPE SIZING TABLE	
PIPE SIZE	MAX G.P.M.
3/4" CLASS 200	UP TO 10 G.P.M.
1" CLASS 200	UP TO 16 G.P.M.
1-1/4" CLASS 200	UP TO 26 G.P.M.
1-1/2" CLASS 200	UP TO 35 G.P.M.

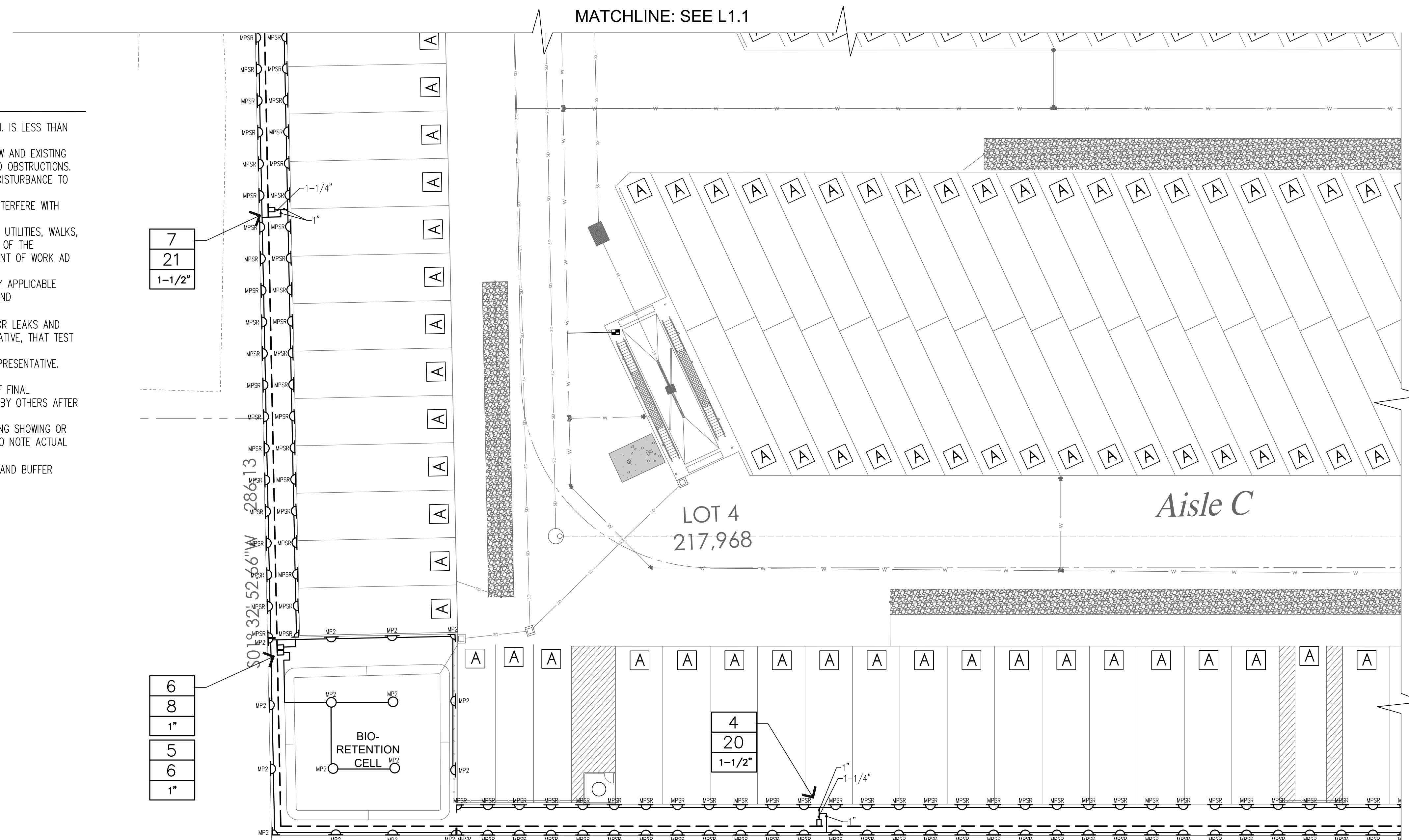


IRRIGATION NOTES

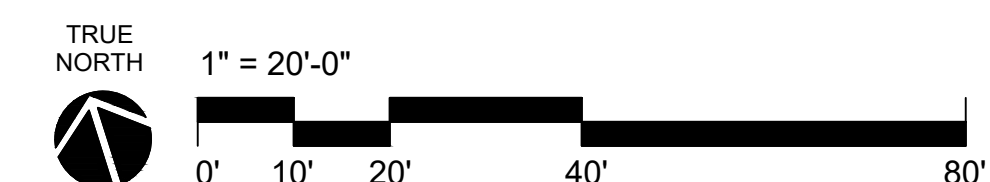
- VERIFY EXISTING STATIC P.S.I. BEFORE INSTALLATION OF IRRIGATION. NOTIFY LANDSCAPE ARCHITECT IF P.S.I. IS LESS THAN 65 STATIC P.S.I.
- VERIFY LOCATIONS OF ALL UNDERGROUND UTILITIES PRIOR TO COMMENCEMENT OF WORK. PROTECT ALL NEW AND EXISTING UTILITIES. PROMPTLY NOTIFY THE LANDSCAPE ARCHITECT OF ANY CONFLICT BETWEEN PROPOSED WORK AND OBSTRUCTIONS.
- HAND TRENCH WITHIN DRIPLINE OF EXISTING TREES TO REMAIN. REROUTE PIPING AS NEEDED TO MINIMIZE DISTURBANCE TO EXISTING TREE ROOTS.
- PLACE IRRIGATION HEADS AND PIPING OUTSIDE OF THE SECURITY FENCE, SO THAT THE FENCE DOES NOT INTERFERE WITH THE SPRAY PATTERN OR COVERAGE.
- IRRIGATION CONTRACTOR SHALL PROVIDE PROTECTION OF ALL PROPERTY, WORK IN PROGRESS, STRUCTURES, UTILITIES, WALKS, CURBS, PAVED SURFACES AND EXISTING LANDSCAPE AND IRRIGATION TO REMAIN DURING THE INSTALLATION OF THE LANDSCAPE AND IRRIGATION WORK. VERIFY LOCATIONS OF UNDERGROUND UTILITIES PRIOR TO COMMENCEMENT OF WORK AND PROTECT SAID UTILITIES.
- IRRIGATION CONTRACTOR SHALL OBTAIN AND PAY FOR ALL NECESSARY PERMITS AND FEES AS REQUIRED BY APPLICABLE CODES AND ORDINANCES FOR THIS WORK. ALL WORK TO BE INSTALLED PER LOCAL CODE REQUIREMENTS AND MANUFACTURER'S SPECIFICATIONS.
- PRESSURIZE MAINLINE TO 100 P.S.I. FOR A PERIOD OF 2 HOURS. CHECK ALL JOINTS AND CONNECTIONS FOR LEAKS AND REPAIR AS REQUIRED. PROVIDE WRITTEN DOCUMENTATION THAT A PRESSURE TEST TO OWNERS REPRESENTATIVE, THAT TEST HAS BEEN COMPLETED WITH NO MORE THAN A 5 P.S.I. LOSS DURING THE TEST DURATION.
- UPON THE COMPLETION OF IRRIGATION WORK, OPERATE THE SYSTEM IN THE PRESENCE OF THE OWNERS REPRESENTATIVE. ADJUST AS NEEDED TO PROVIDE FULL COVERAGE AND MINIMIZE OVER SPRAY.
- GUARANTEE ALL MATERIALS AND WORKMANSHIP FOR A PERIOD OF ONE YEAR, COMMENCING AT THE TIME OF FINAL ACCEPTANCE. THE GUARANTEE DOES NOT APPLY TO WORK OR DAMAGE DONE TO THE IRRIGATION SYSTEM BY OTHERS AFTER FINAL ACCEPTANCE.
- PRIOR TO FINAL ACCEPTANCE, PROVIDE THE OWNER WITH A CLEARLY DRAWN REPRODUCIBLE RECORD DRAWING SHOWING OR NOTING ACTUAL LOCATIONS OF CONTROLLER, MAINLINE, VALVES, AND QUICK COUPLERS. RECORD DRAWING TO NOTE ACTUAL PRODUCTS INSTALLED IF DIFFERENT THAN ORIGINALLY SPECIFIED PRODUCTS.
- IRRIGATION VALVES #13 & 14 TO BE DESIGN/BUILD TEMPORARY ABOVE GRADE IRRIGATION ZONES FOR WETLAND BUFFER PLANTING. ALL SURFACE ELEMENTS OF THE IRRIGATION TO BE REMOVED AFTER TWO GROWING SEASONS.
- REFER TO SHEET L-2.4 FOR IRRIGATION DETAILS.



KEY PLAN

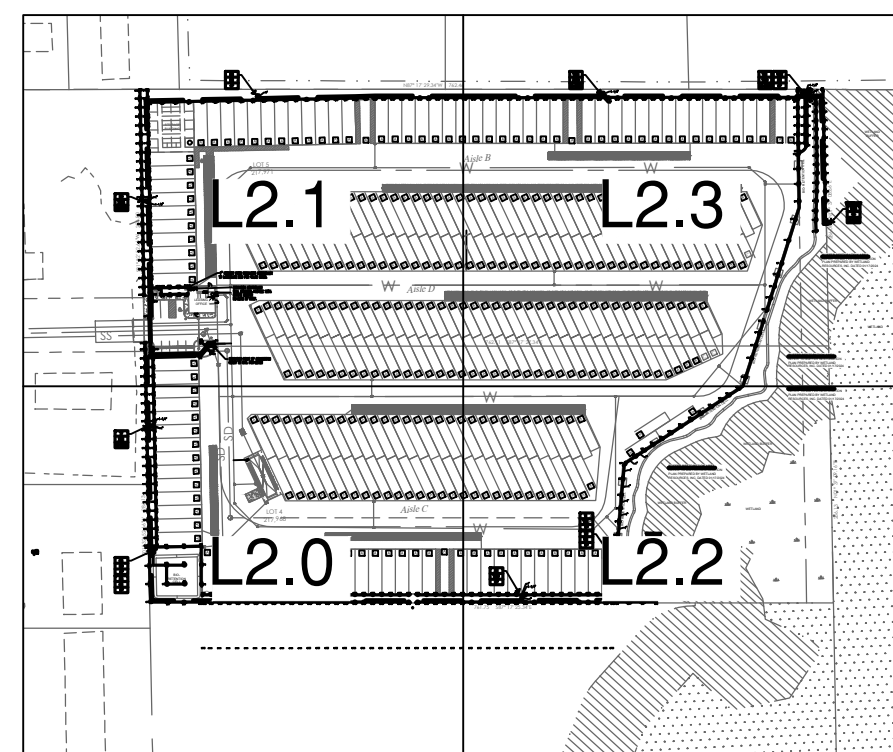


IRRIGATION PLAN

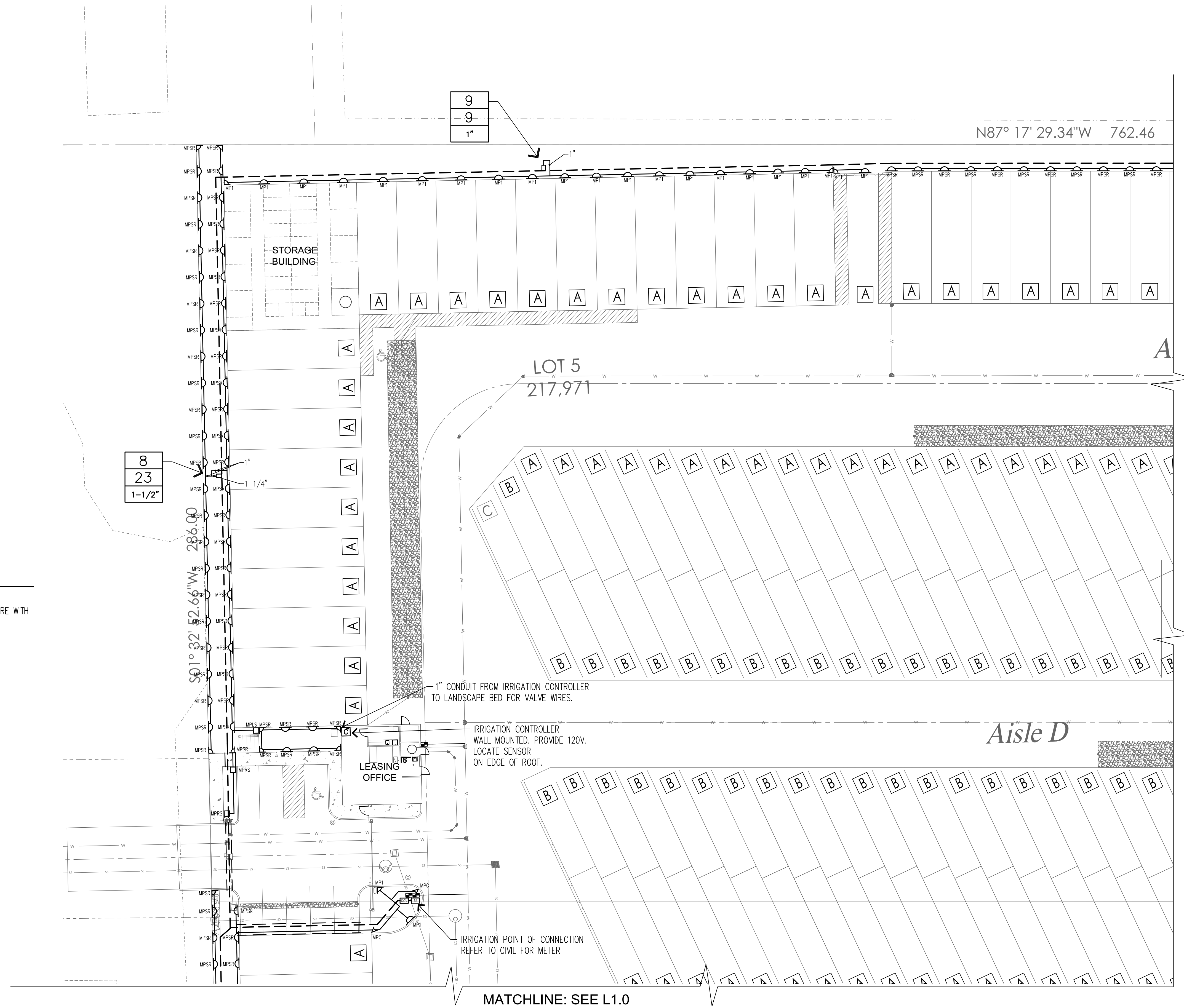


IRRIGATION NOTES

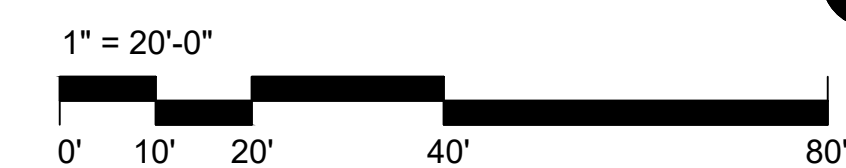
1. REFER TO SHEET L2.0 FOR IRRIGATION SCHEDULE AND NOTES. REFER TO SHEET L2.4 FOR IRRIGATION DETAILS.
2. PLACE IRRIGATION HEADS AND PIPING OUTSIDE OF THE SECURITY FENCE, SO THAT THE FENCE DOES NOT INTERFERE WITH THE SPRAY PATTERN OR COVERAGE.



KEY PLAN



IRRIGATION PLAN



Richard Peterson
170 120th Ave NE Ste 203, Bellevue, WA 98005

163 RV Park
143XX Smokey Point Blvd, Marysville, WA 98271
A PORTION OF SECTION 28, TOWNSHIP 31 NORTH, RANGE 5 EAST, W. 4.

LAND TECHNOLOGIES
18820 Third Avenue, N.E.
Arlington, WA 98223
360-652-9727
MAKING A WAY OUT OF NO WAY

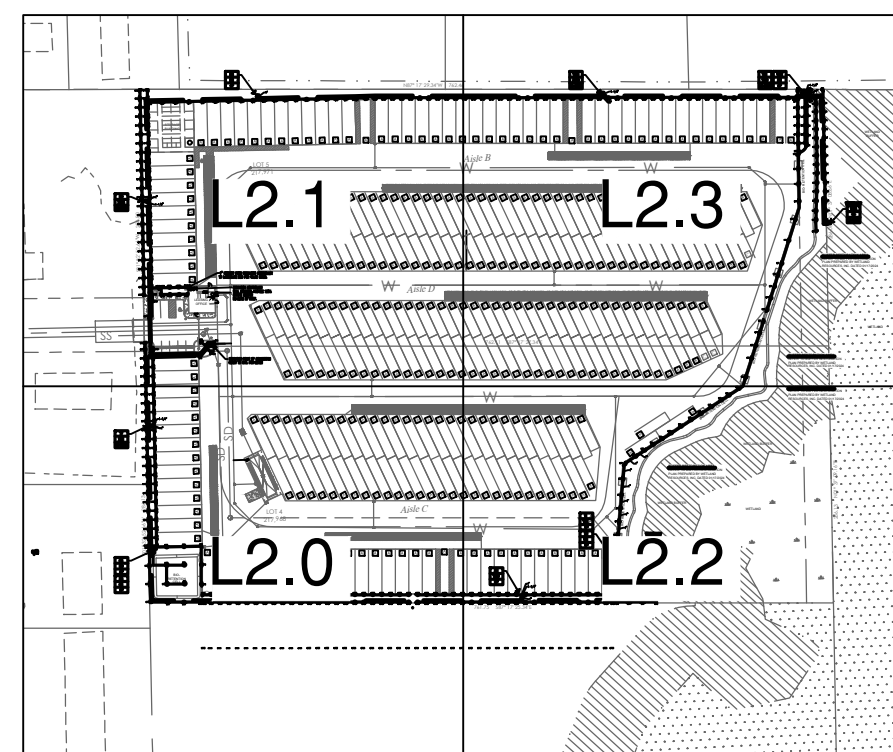
PROJECT LEAD:
CHECKED BY:
DRAWN BY:
APPLICATION DATE:
SITE APPROVAL DATE:
REVISION DATE:
LDA APPROVAL:
AS-BUILT:

RWA
RICHARD WARD ASSOCIATES
LANDSCAPE ARCHITECTS
40 LAKE BELLEVUE DRIVE, SUITE #350
SEATTLE, WA 98105
PHONE: 206.387.6223
E-MAIL: RWA2100@GMAIL.COM

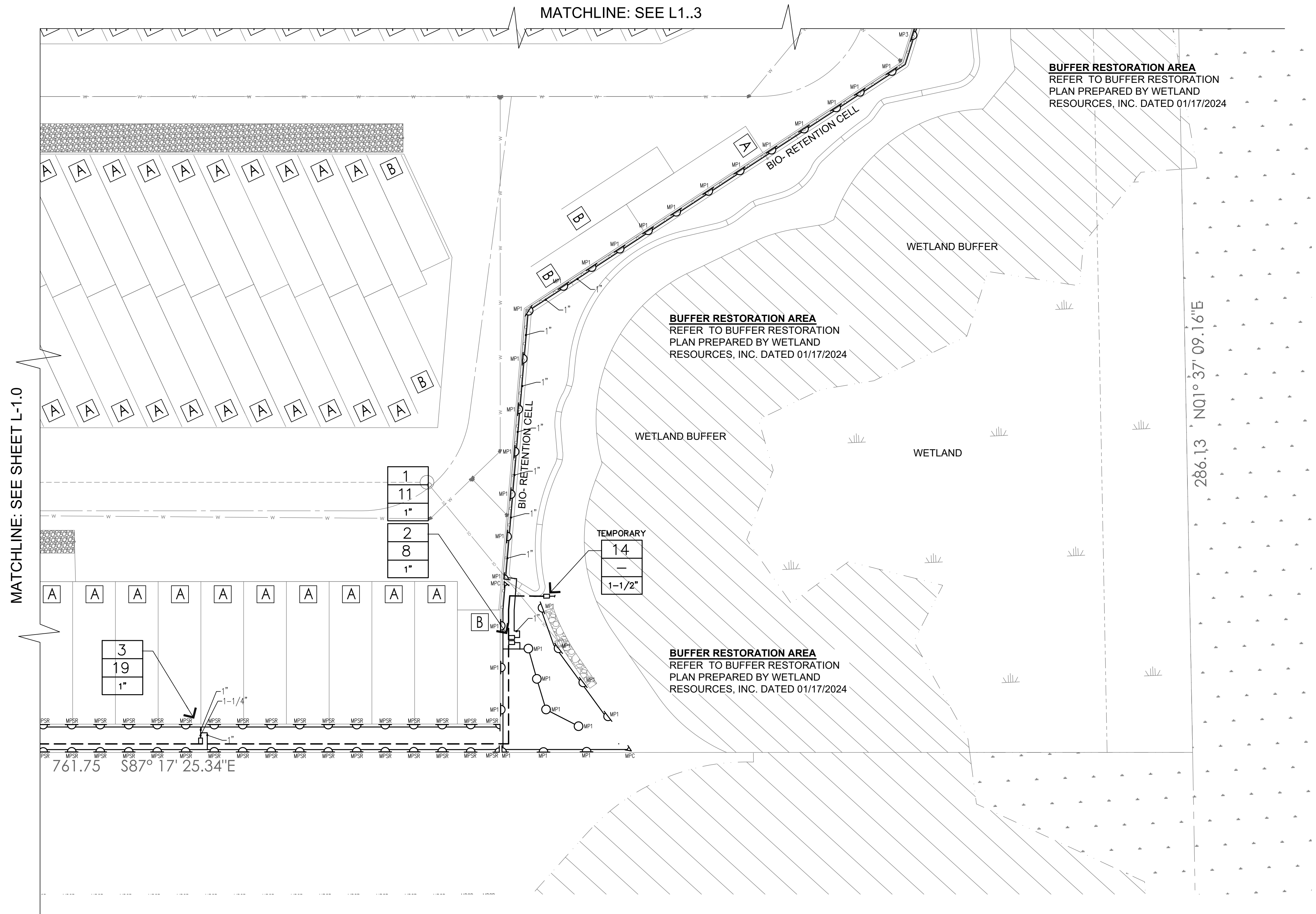
IRRIGATION PLANS

L2.1 SHEET of 10

04/16/2024



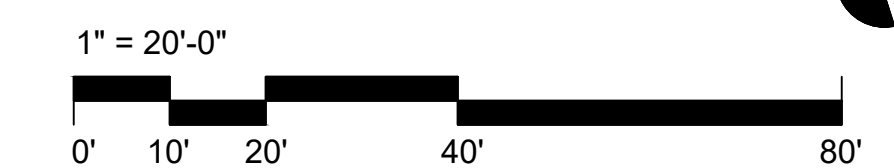
KEY PLAN

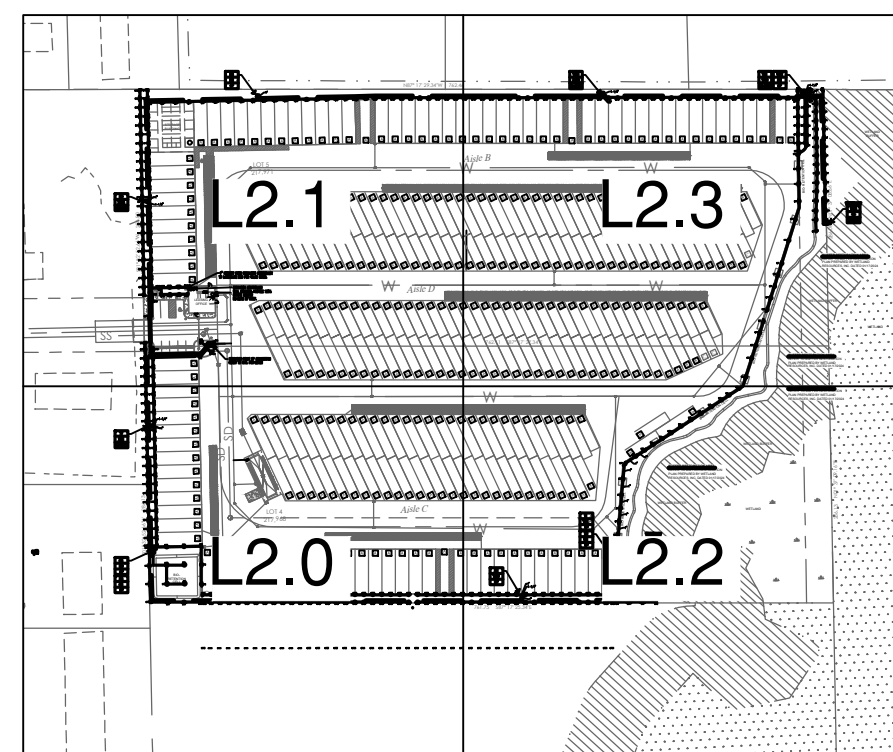


IRRIGATION NOTES

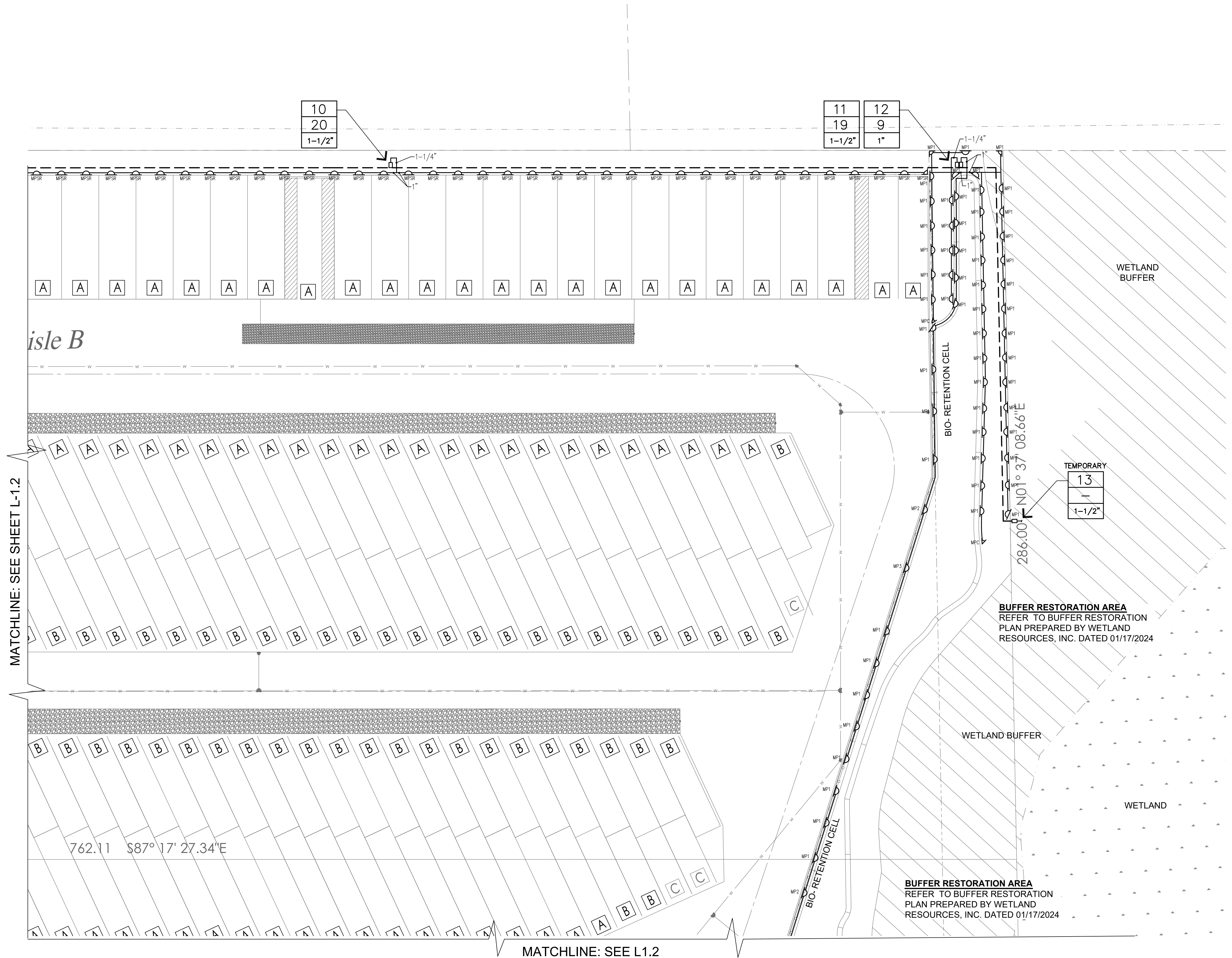
1. REFER TO SHEET L2.0 FOR IRRIGATION SCHEDULE AND NOTES. REFER TO SHEET L2.4 FOR IRRIGATION DETAILS.
2. PLACE IRRIGATION HEADS AND PIPING OUTSIDE OF THE SECURITY FENCE, SO THAT THE FENCE DOES NOT INTERFERE WITH THE SPRAY PATTERN OR COVERAGE.

IRRIGATION PLAN





KEY PLAN



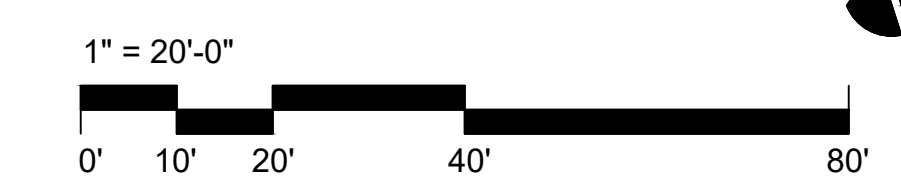
MATCHLINE: SEE SHEET L-1.2

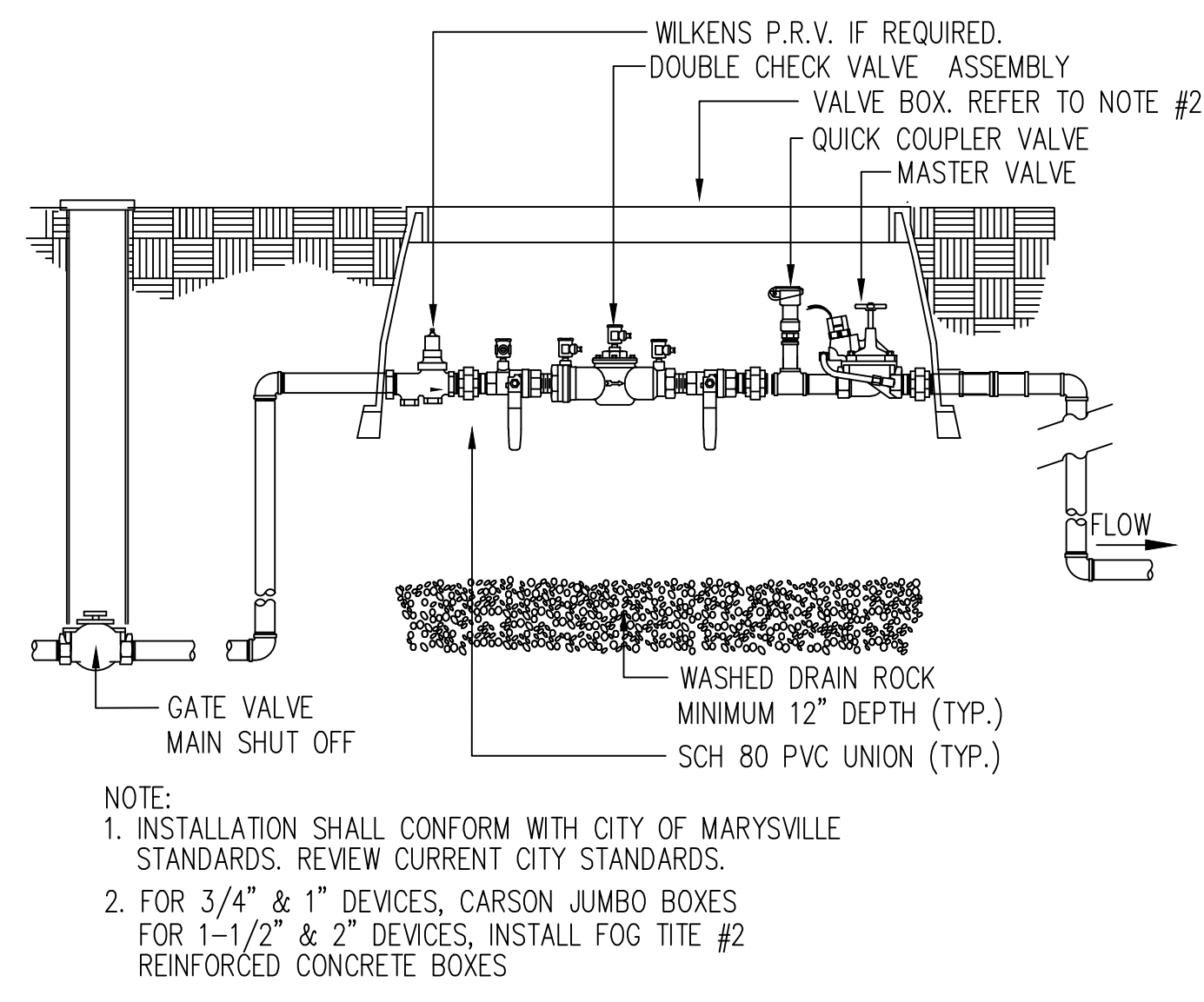
MATCHLINE: SEE L1.2

IRRIGATION NOTES

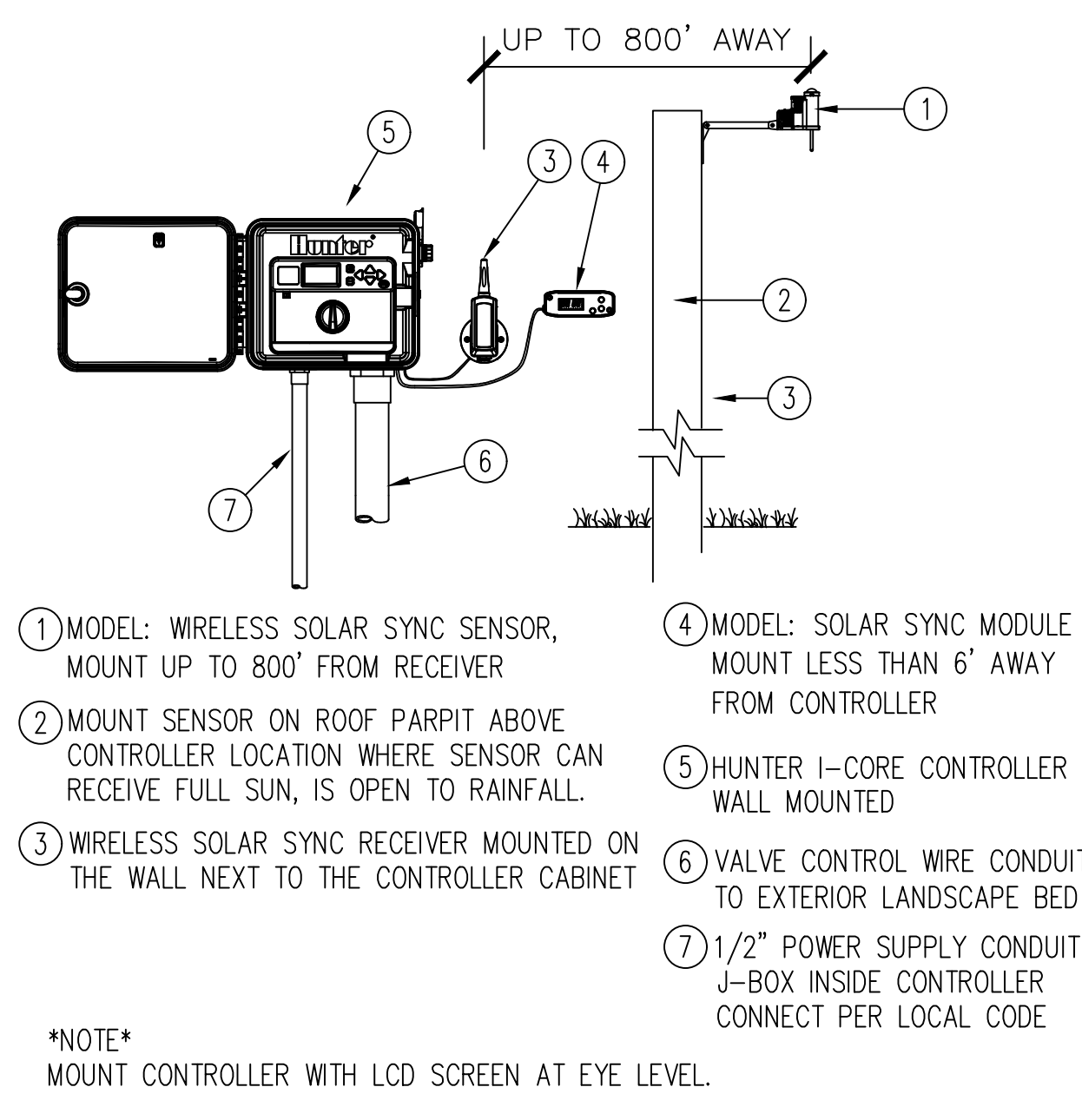
1. REFER TO SHEET L2.0 FOR IRRIGATION SCHEDULE AND NOTES. REFER TO SHEET L2.4 FOR IRRIGATION DETAILS.
2. PLACE IRRIGATION HEADS AND PIPING OUTSIDE OF THE SECURITY FENCE, SO THAT THE FENCE DOES NOT INTERFERE WITH THE SPRAY PATTERN OR COVERAGE.

IRRIGATION PLAN

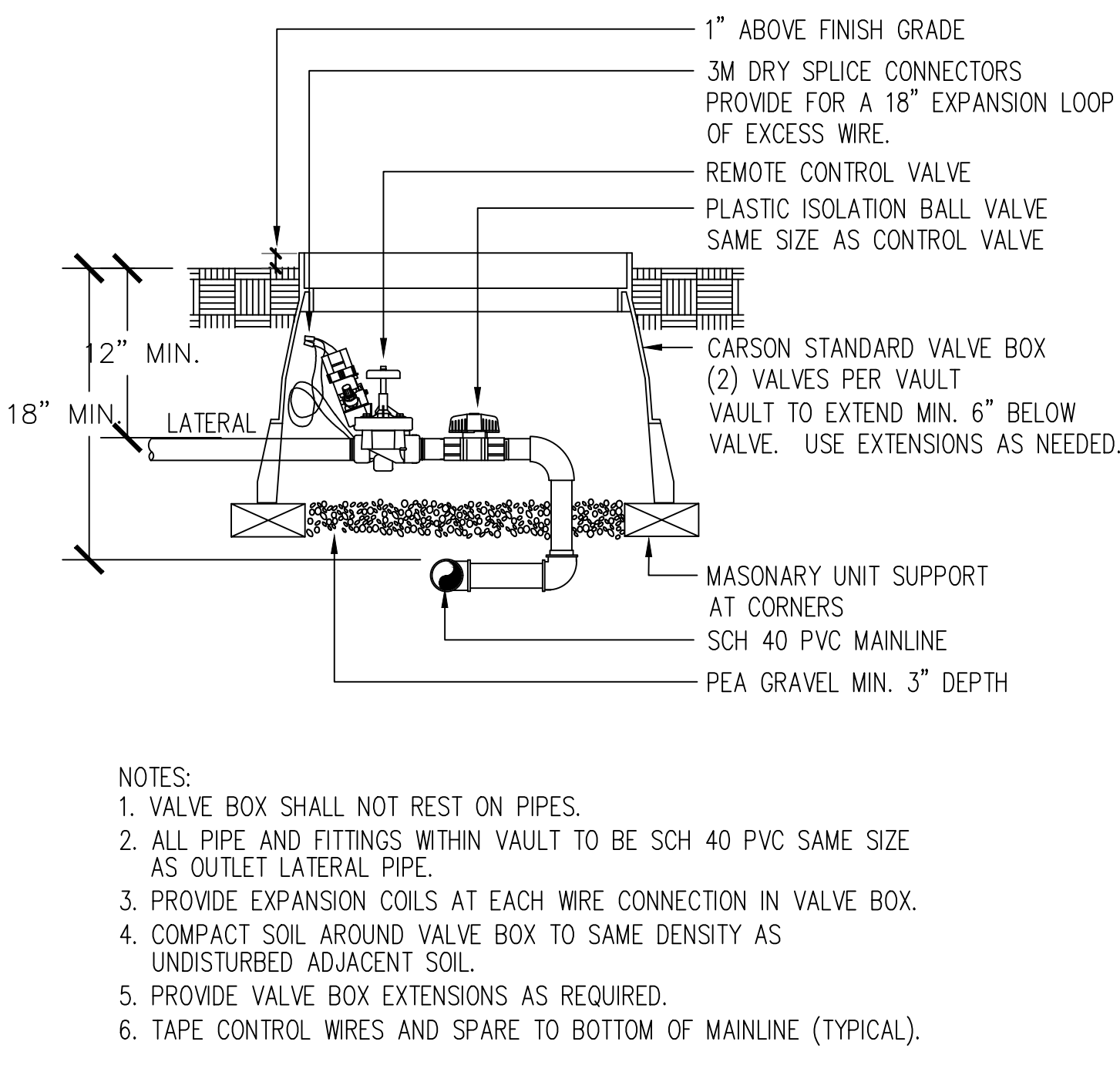




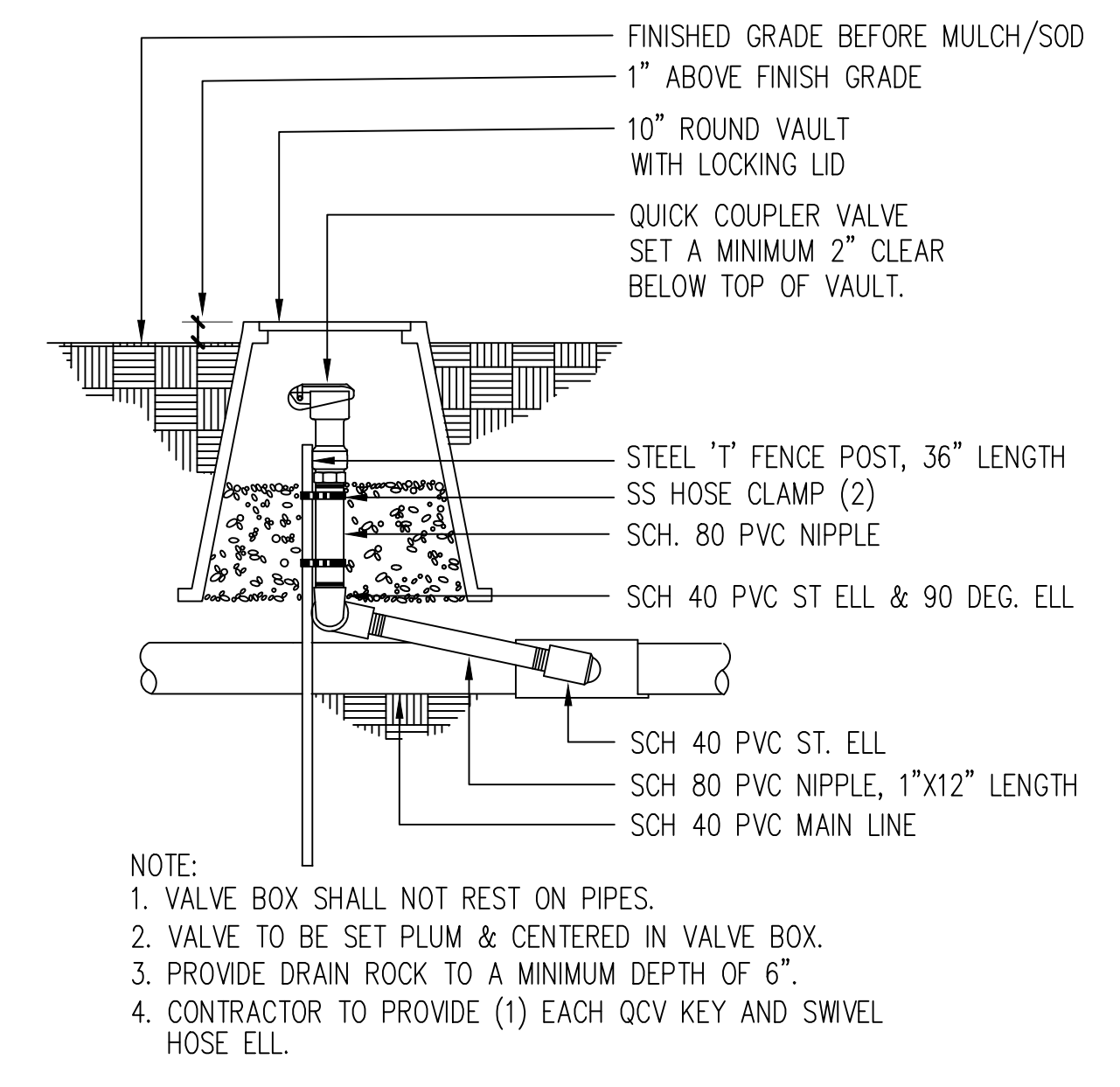
1 POINT OF CONNECTION
NTS



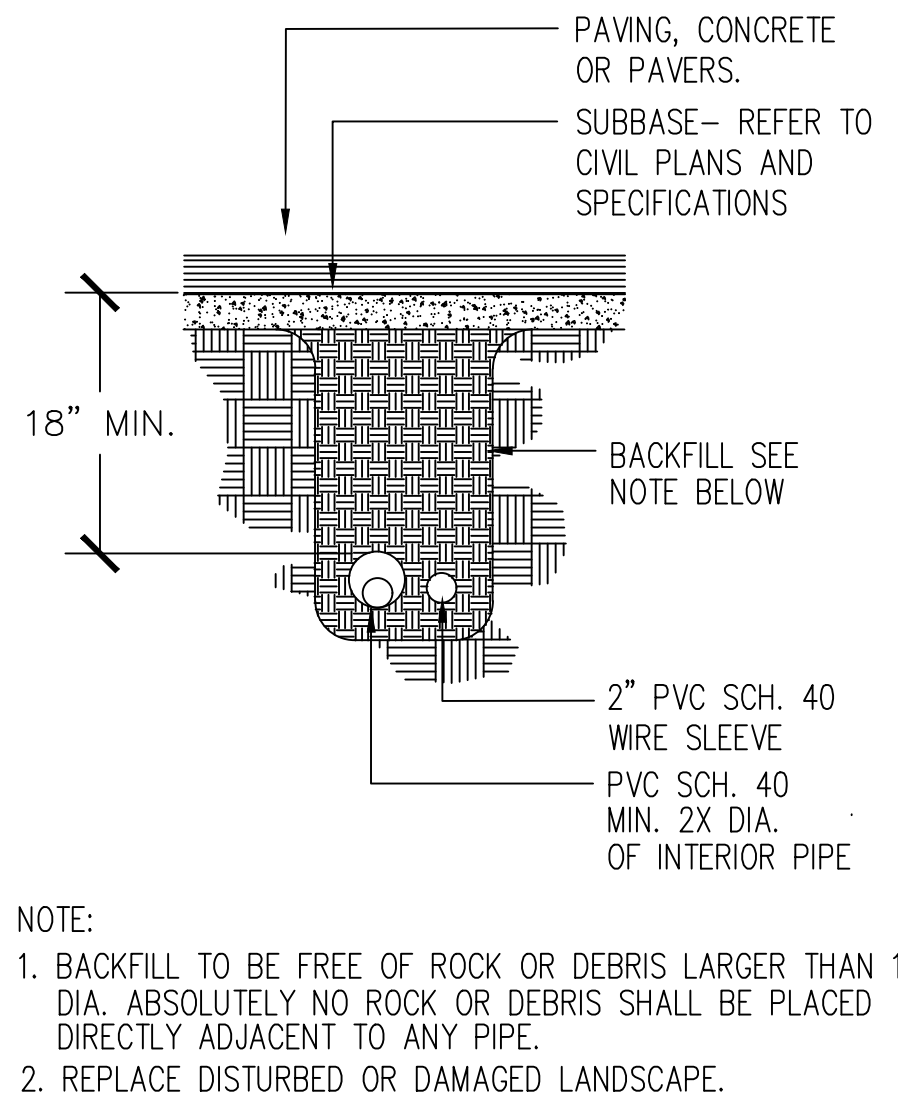
2 IRRIGATION CONTROLLER
NTS



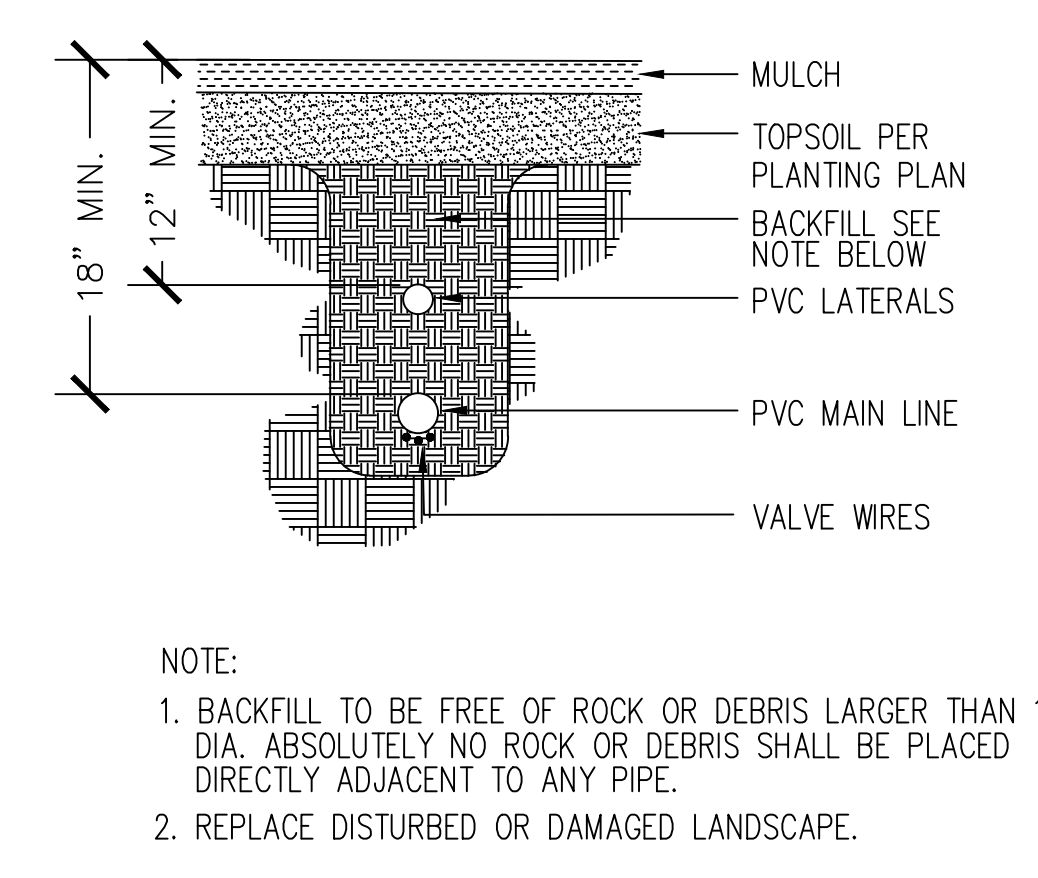
3 AUTOMATIC VALVE
NTS



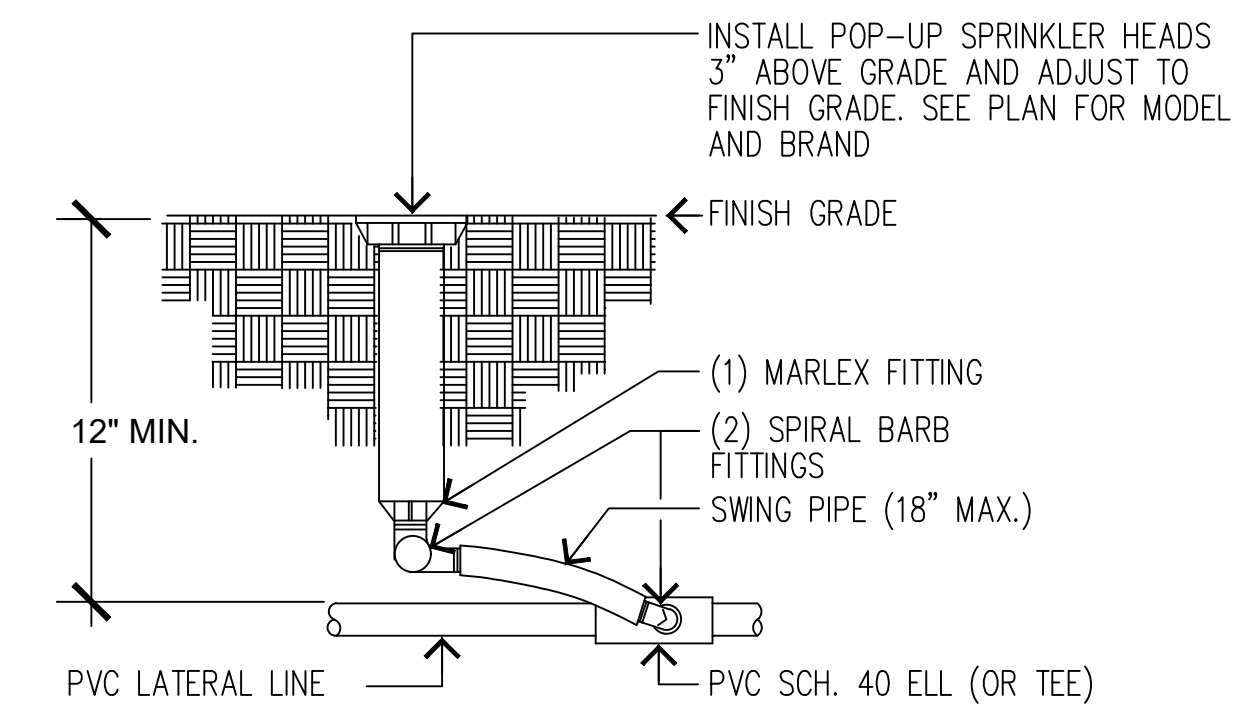
4 QUICK COUPLER VALVE
NTS



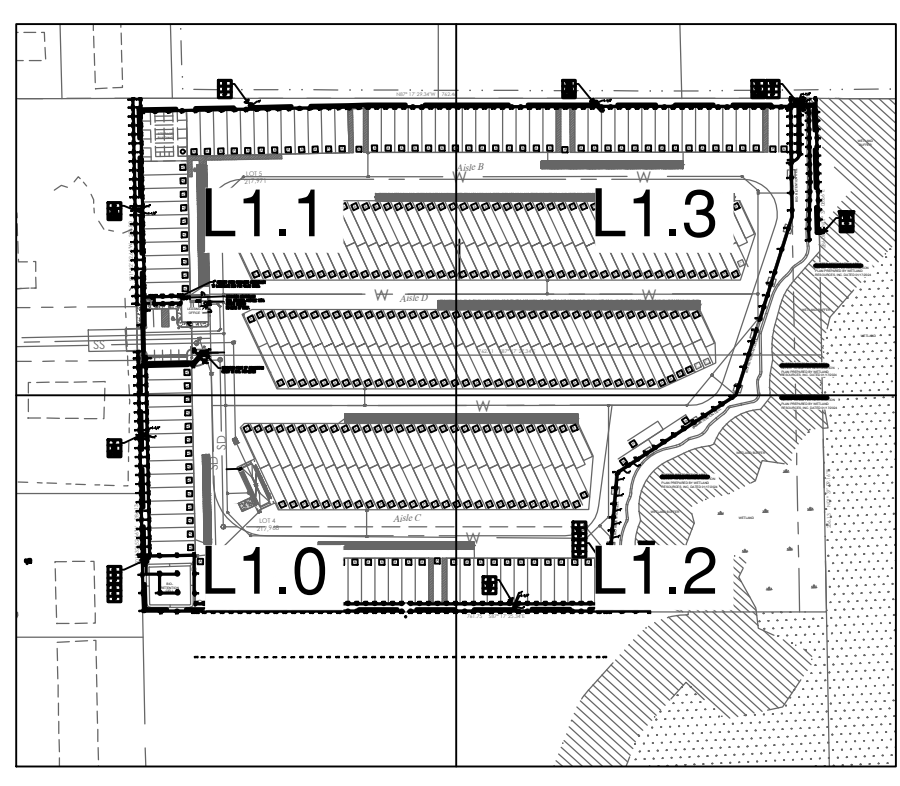
5 SLEEVING
NTS



6 PIPE TRENCHING
NTS



7 POP-UP SPRINKLER
NTS



KEY PLAN

IRRIGATION DETAILS

LAND TECHNOLOGIES
18820 Third Avenue, N.E.
Arlington, WA 98223
360-652-9727

RWA RICHARD WARD ASSOCIATES
LANDSCAPE ARCHITECTS
40 LAKE BELLEVUE DRIVE, SUITE #350
MOUNTAIN VIEW, WA 98005
PHONE: 206.387.6223
E-MAIL: RWA2100@GMAIL.COM

PROJECT LEAD:
CHECKED BY:
DRAWN BY:
APPLICATION DATE:
SITE APPROVAL DATE:
REVISION DATE:
LDA APPROVAL:
AS-BUILT:

163 RV Park
163XX Smokey Point Blvd, Marysville, WA 98271
A PORTION OF SECTION 28, TOWNSHIP 31 NORTH, RANGE 5 EAST, W.M.

Richard Peterson
170 120th Ave NE Ste 203, Bellevue, WA 98005

IRRIGATION PLANS

L2.4 SHEET of 10
04/16/2024