

VICINITY MAP

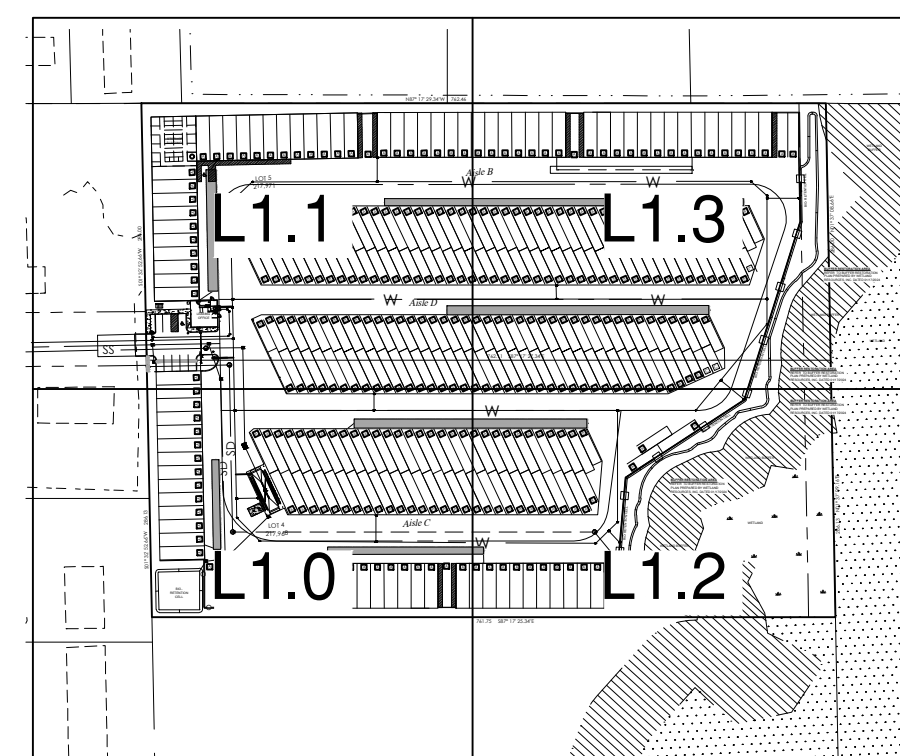
1" = 2000'

**LANDSCAPE NOTES:**

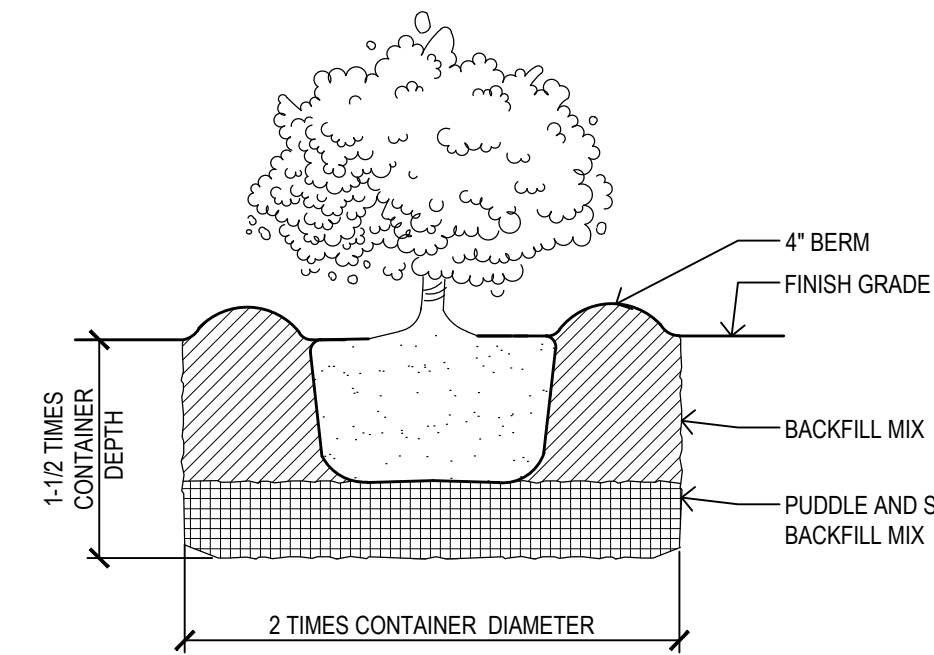
1. ALL SPECIFIED PLANTS SHALL ADHERE TO THE AMERICAN STANDARD OF NURSERY STOCK (ANSI) Z60.1-2014.
2. INCORPORATE INTO ALL PLANTING AREAS MINIMUM 2" ORGANIC MULCH AS PER BMP T5.13 (SUBMIT SAMPLE FOR WRITTEN APPROVAL). ROTOTILL TO DEPTH OF 6" MINIMUM.
3. ALL PLANTING AREAS TO RECEIVE MINIMUM 4" DEPTH OF IMPORTED TOPSOIL 3-WAY MIX. SUBMIT SAMPLE FOR WRITTEN APPROVAL.
4. ALL PLANTING AREAS TO RECEIVE MINIMUM 2" MEDIUM GRADE BARK MULCH. SUBMIT SAMPLE FOR WRITTEN APPROVAL.
5. BIO RETENTION CELL SEED BED PREPARATION. FOLLOWING ROUGH GRADING AND SHAPING OF BIO CELL, ROTOTILL EXISTING SOIL TO DEPTH OF 4". INCORPORATE 2" WEED FREE COMPOST MATERIAL TO ENTIRE SEE BED. BROADCAST SEED IN TWO APPLICATIONS N/S AND E/W AT SPECIFIED RATE. COVER ENTIRE SEED BED WITH A THIN COVERING OF IMPORTED TOPSOIL. COORDINATE WITH IRRIGATION INSTALLATION AND BUFFER RESTORATION PLAN SUPPLIED BY WETLAND RESOURCES.

**MAINTENANCE NOTES:** (MARYSVILLE MUNICIPAL CODE SECTION 22C.120.180)

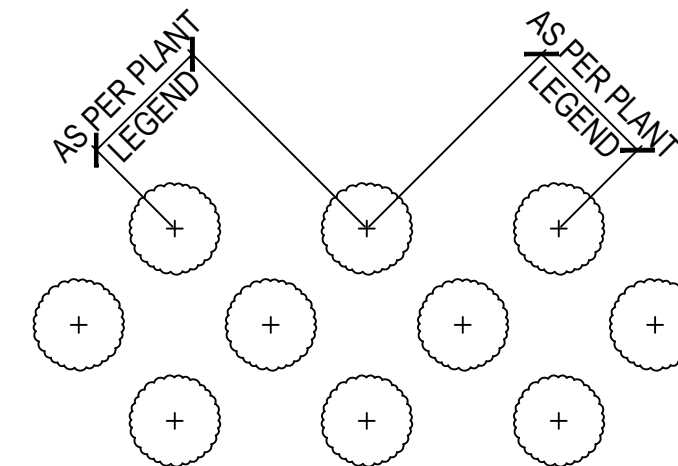
1. ALL LANDSCAPED AREAS AND PLANTS REQUIRED BY THIS CHAPTER MUST BE PERMANENTLY MAINTAINED IN A HEALTHY GROWING CONDITION IN ORDER TO ACCOMPLISH THE PURPOSE FOR WHICH THEY WERE REQUIRED.
2. DEAD OR DISEASED PLANTS MUST BE REPLACED WITHIN 30 DAYS OF NOTIFICATION, OR AS SOON AS PRACTICAL IN REGARD TO FREEZING WEATHER, OR COMPLEX SITUATIONS INVOLVING THE REMOVAL AND REPLACEMENT OF LARGE TREES.
3. ALL LANDSCAPED AREAS MUST BE KEPT FREE OF DEBRIS AND WEEDS.
4. PLANT MATERIAL MUST NOT INTERFERE WITH PUBLIC UTILITIES, RESTRICT PEDESTRIAN OR VEHICLE ACCESS OR CONSTITUTE A TRAFFIC HAZARD.
5. PLANTED AREAS NEXT TO PEDESTRIAN WALKWAYS AND SIDEWALKS SHALL BE MAINTAINED OR PLANT MATERIAL CHOSEN TO MAINTAIN A CLEAR ZONE BETWEEN THREE AND EIGHT FEET FROM GROUND LEVEL.
6. THE OWNERS, THEIR AGENTS AND ASSIGNS ARE RESPONSIBLE FOR PROVIDING, PROTECTING, AND MAINTAINING ALL LANDSCAPING MATERIAL IN A HEALTHY AND GROWING CONDITION, REPLACING IT WHEN NECESSARY AND KEEPING IT FREE OF REFUSE AND DEBRIS.
7. ALL FENCING, WALLS AND OTHER FEATURES USED FOR SCREENING PURPOSES SHALL BE KEPT FREE OF LITTER, DEBRIS, AND WEEDS.



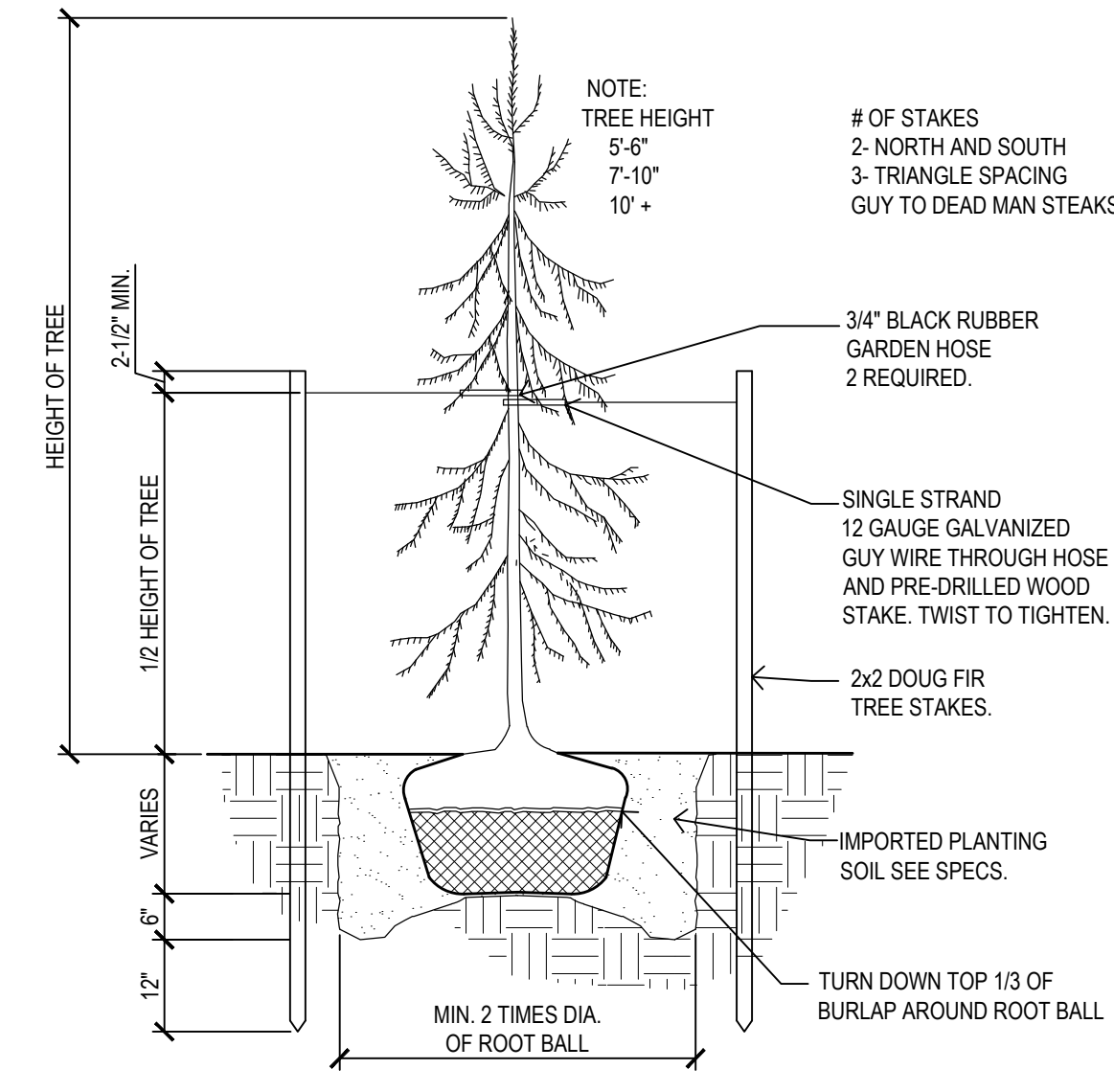
KEY PLAN



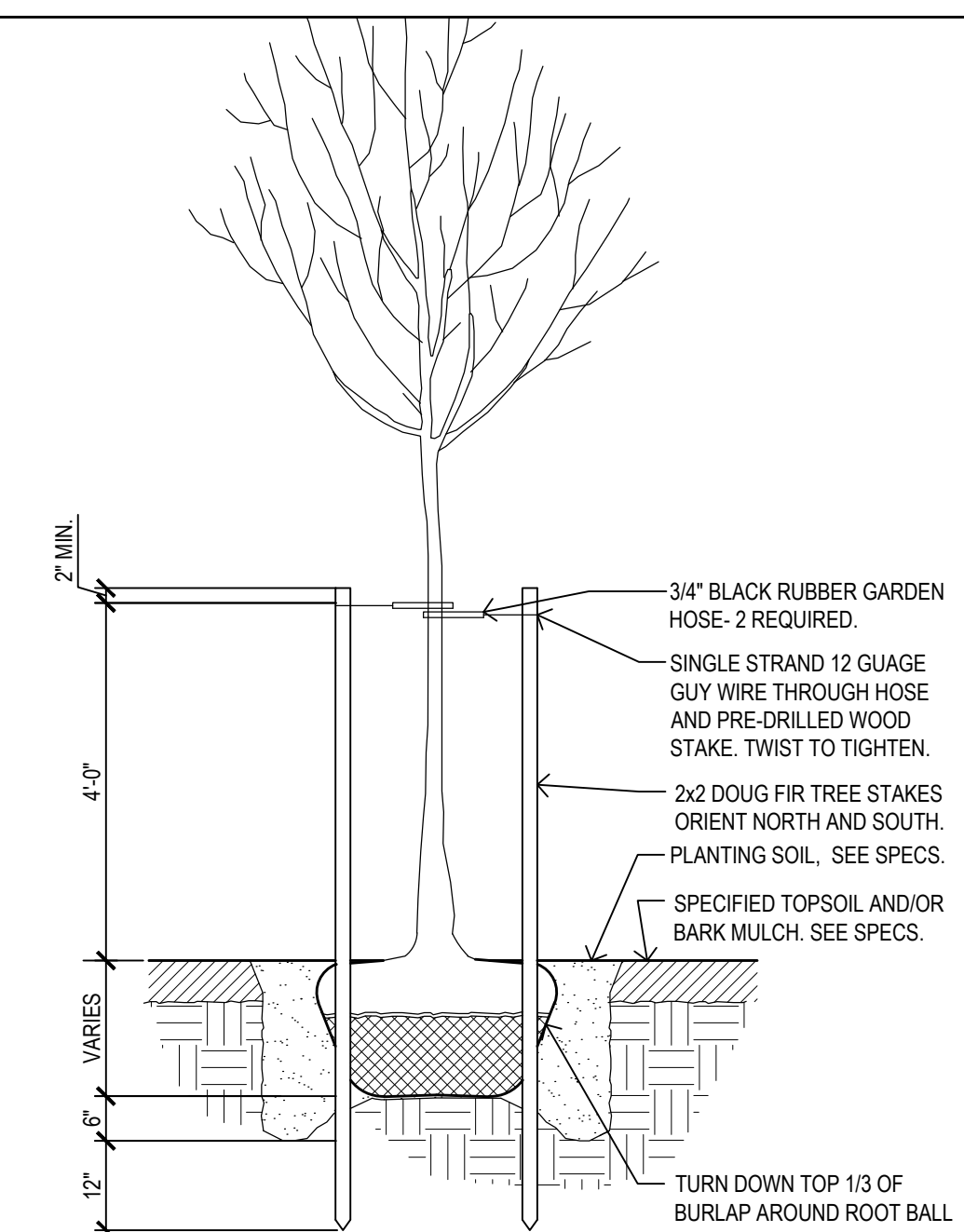
SHRUB PLANTING DETAIL  
SCALE: 1/2" = 1'-0"



PLANT SPACING DETAIL  
SCALE: 1/4" = 1'-0"

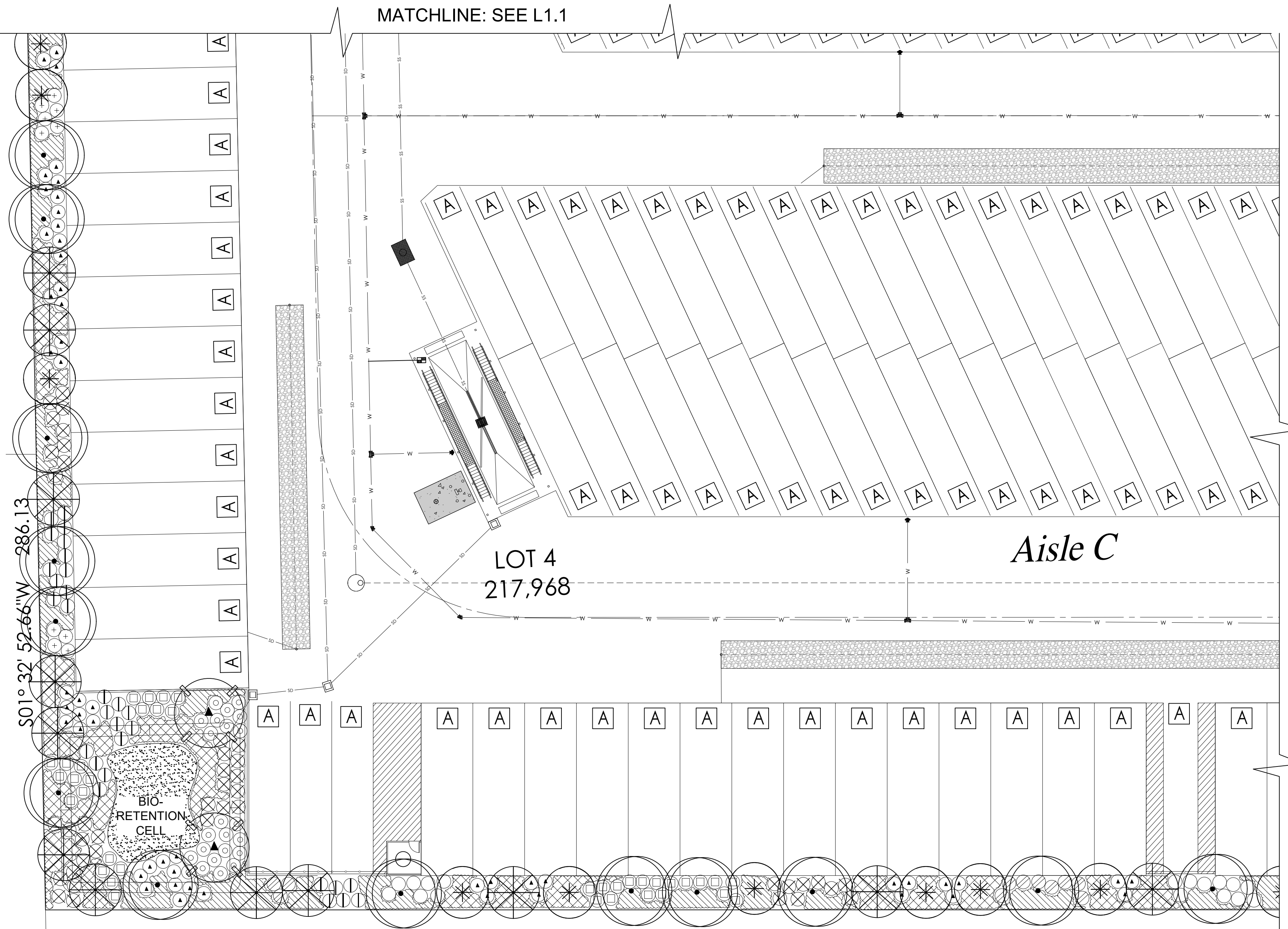


EVERGREEN TREE STAKING DETAIL  
SCALE: 1/2" = 1'-0"

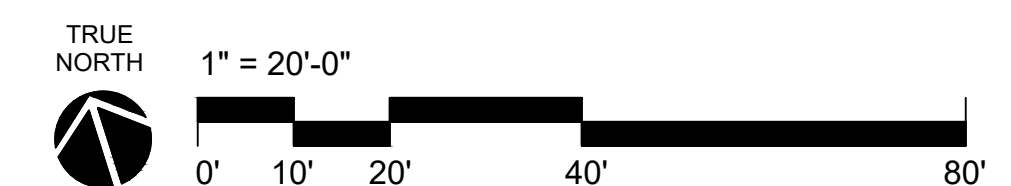


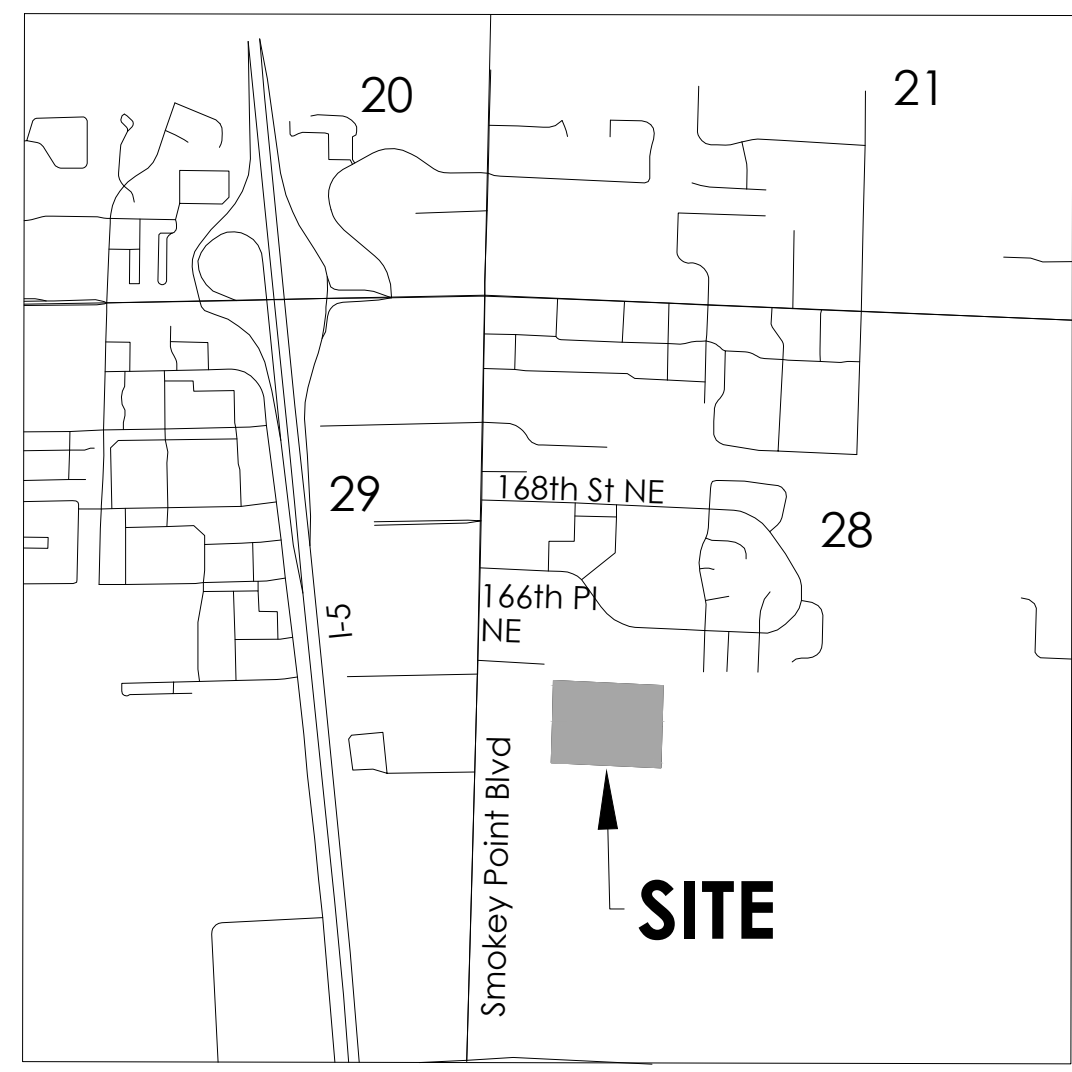
DECIDUOUS TREE STAKING DETAIL  
SCALE: 1/2" = 1'-0"

**TYPICAL PLANTING DETAILS**



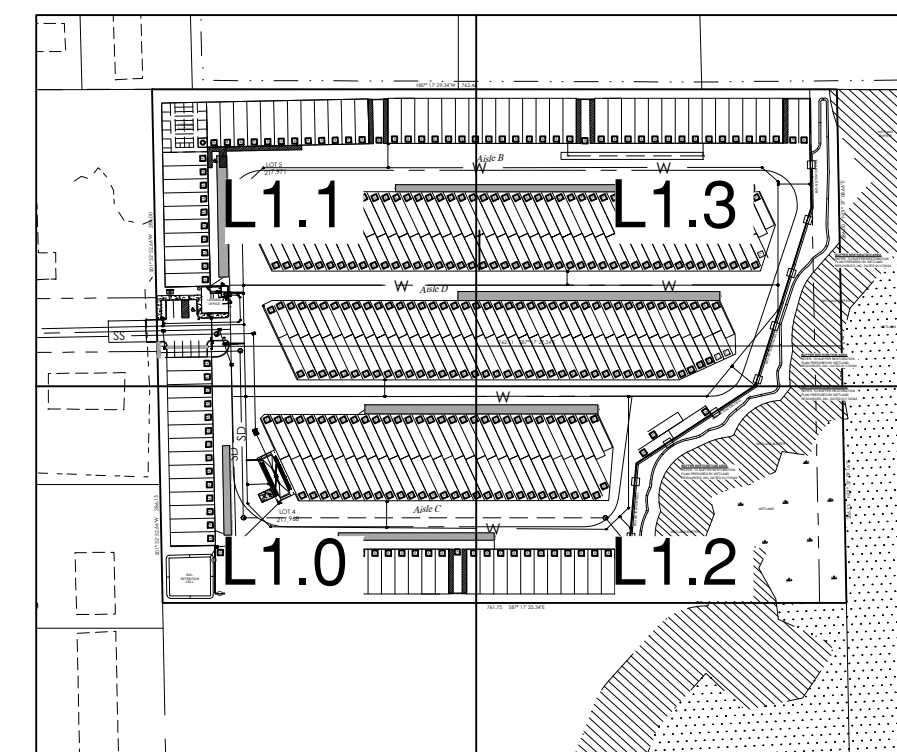
LANDSCAPE PLAN



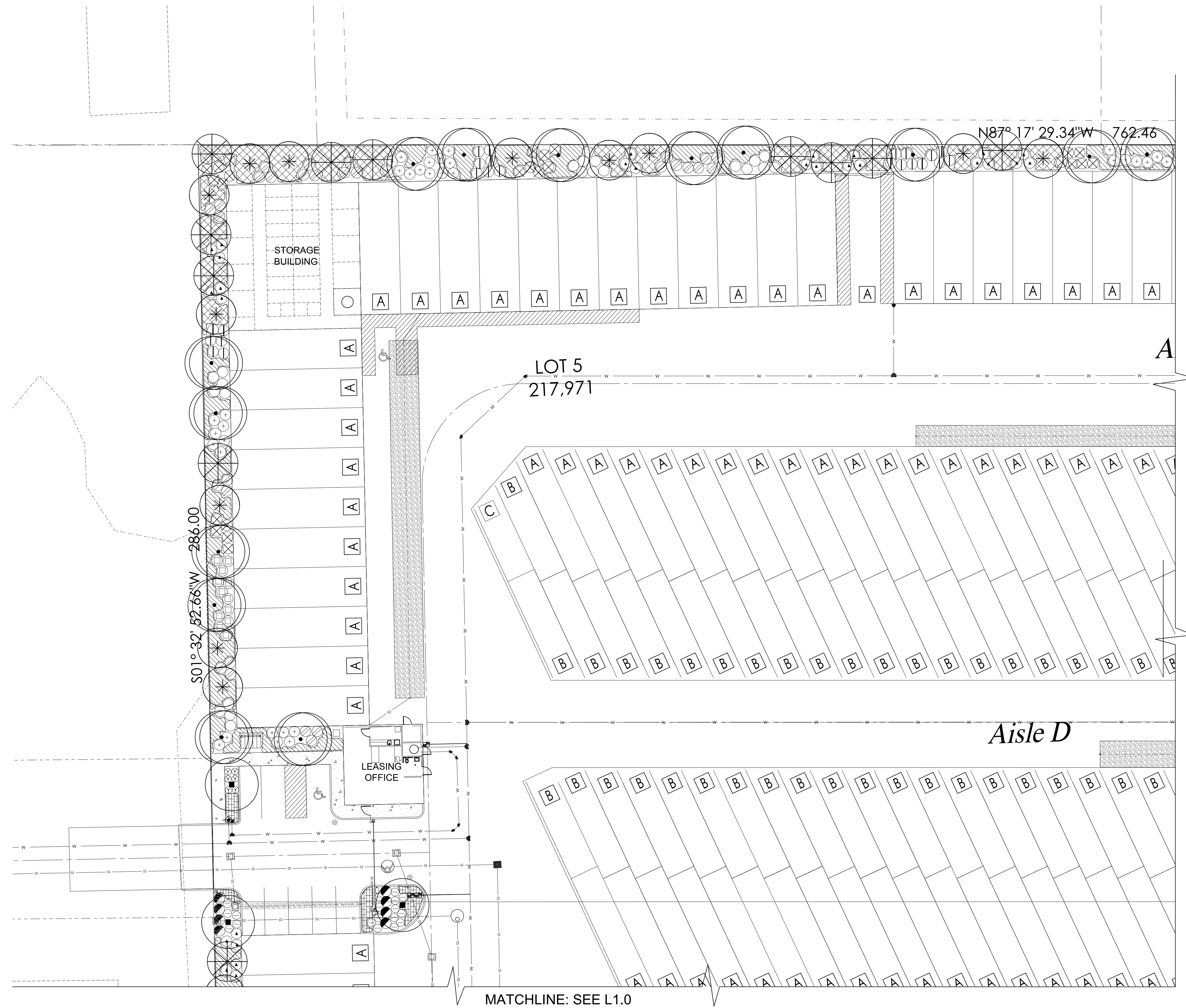


VICINITY MAP

1" = 2000'



KEY PLAN

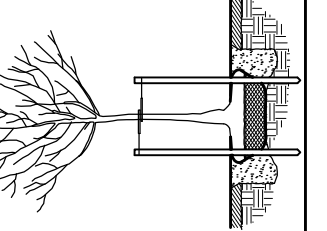


MATCHLINE: SEE L1.0

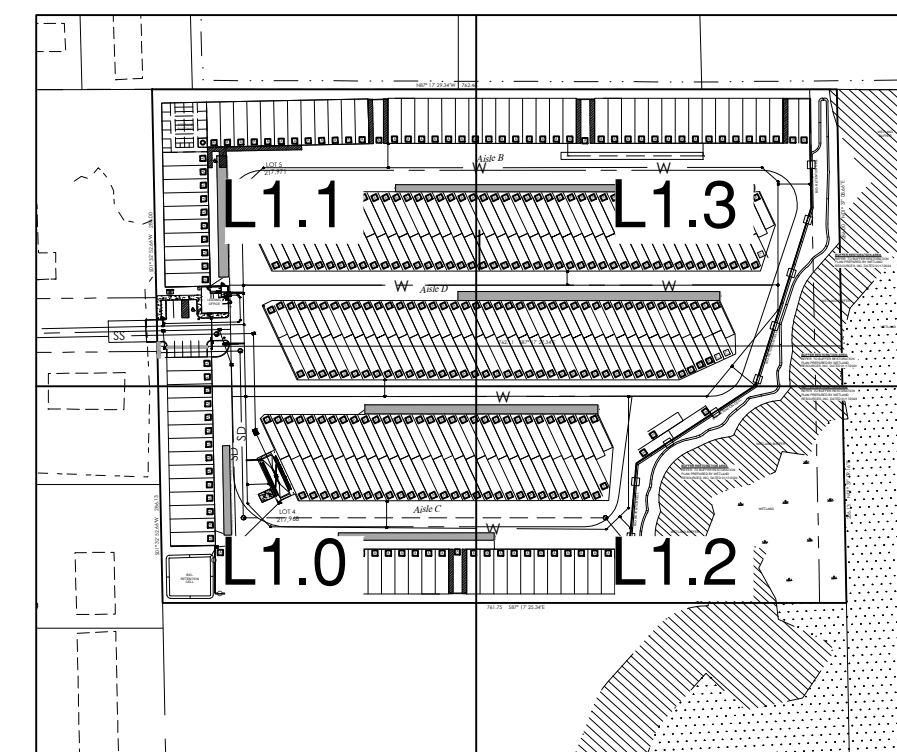
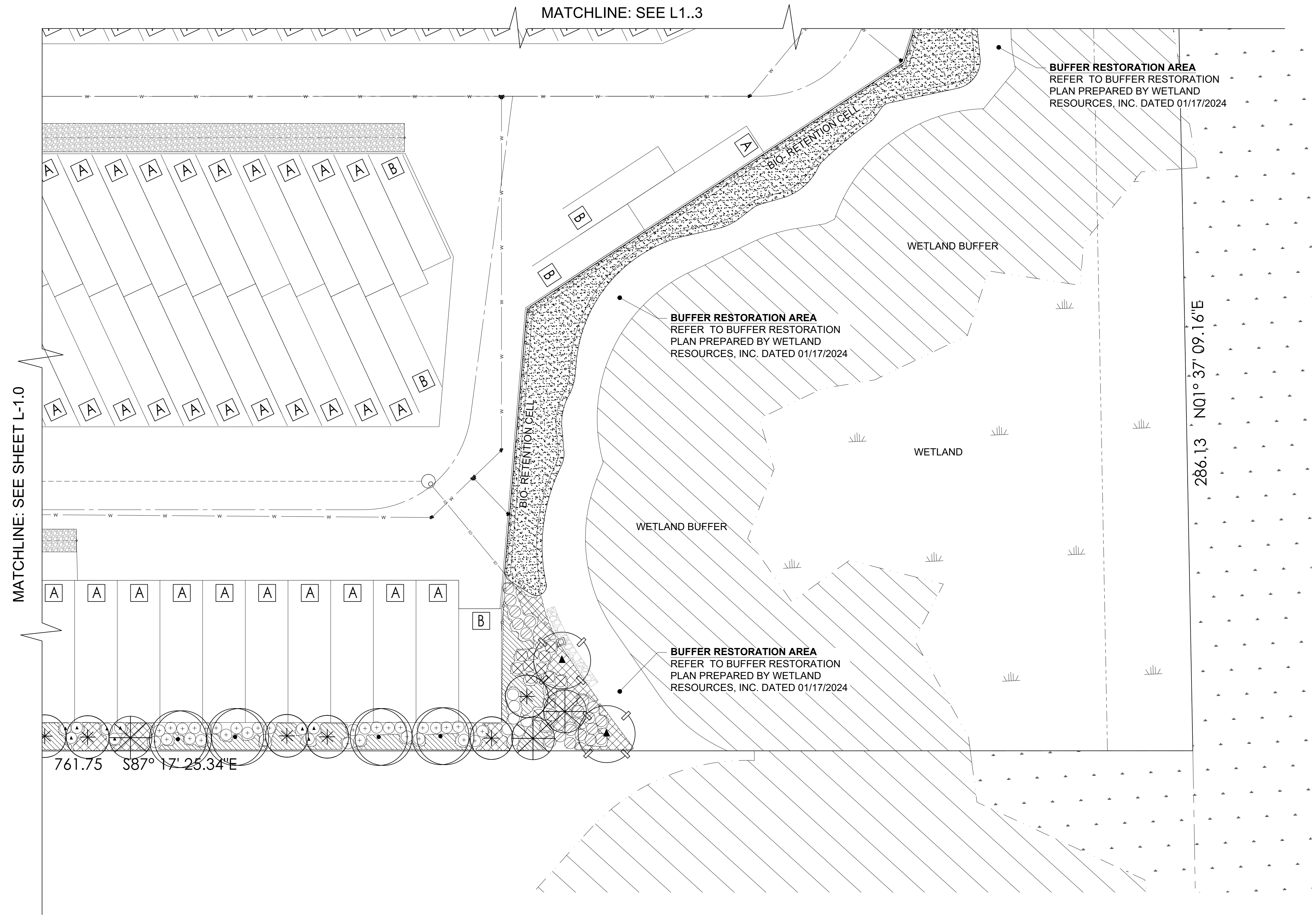
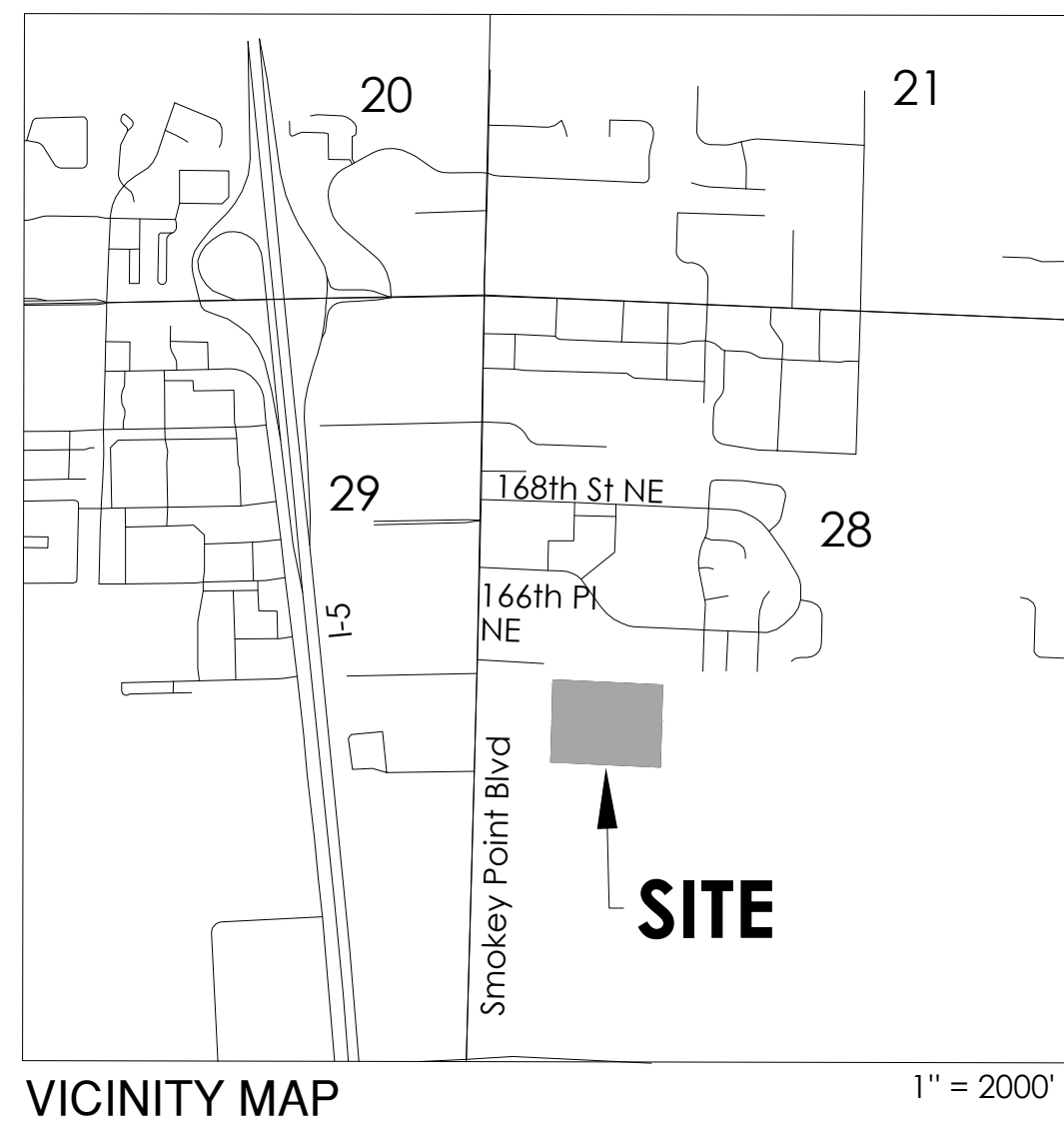
MATCHLINE: SEE SHEET L-1.3

LANDSCAPE PLAN

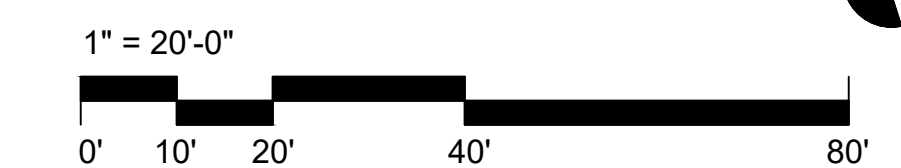
1" = 20'-0"

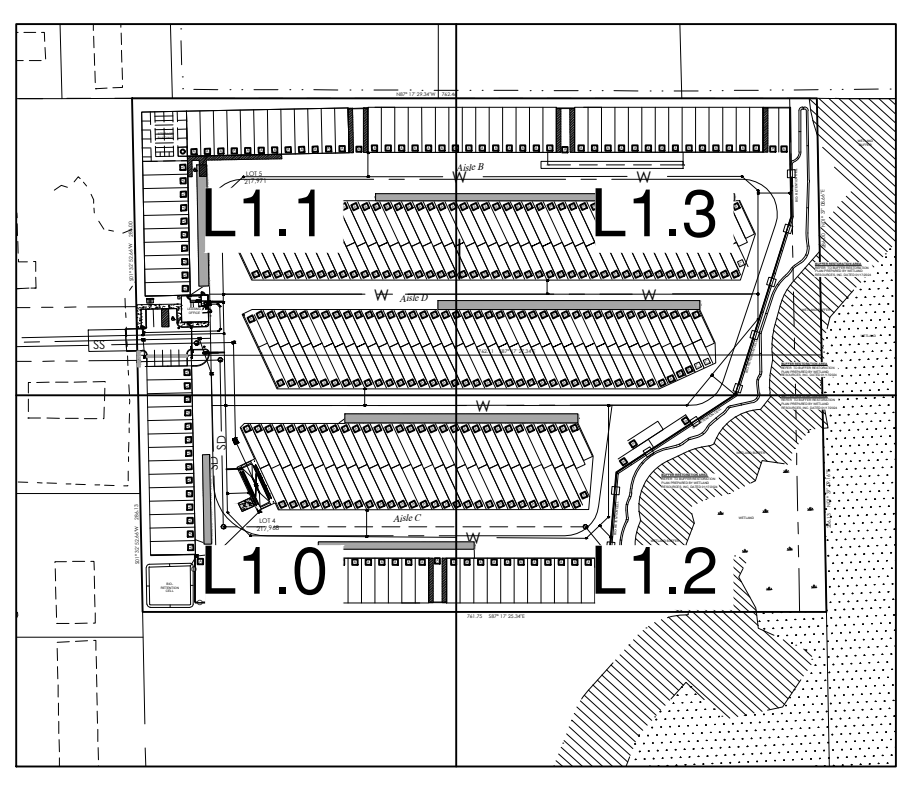
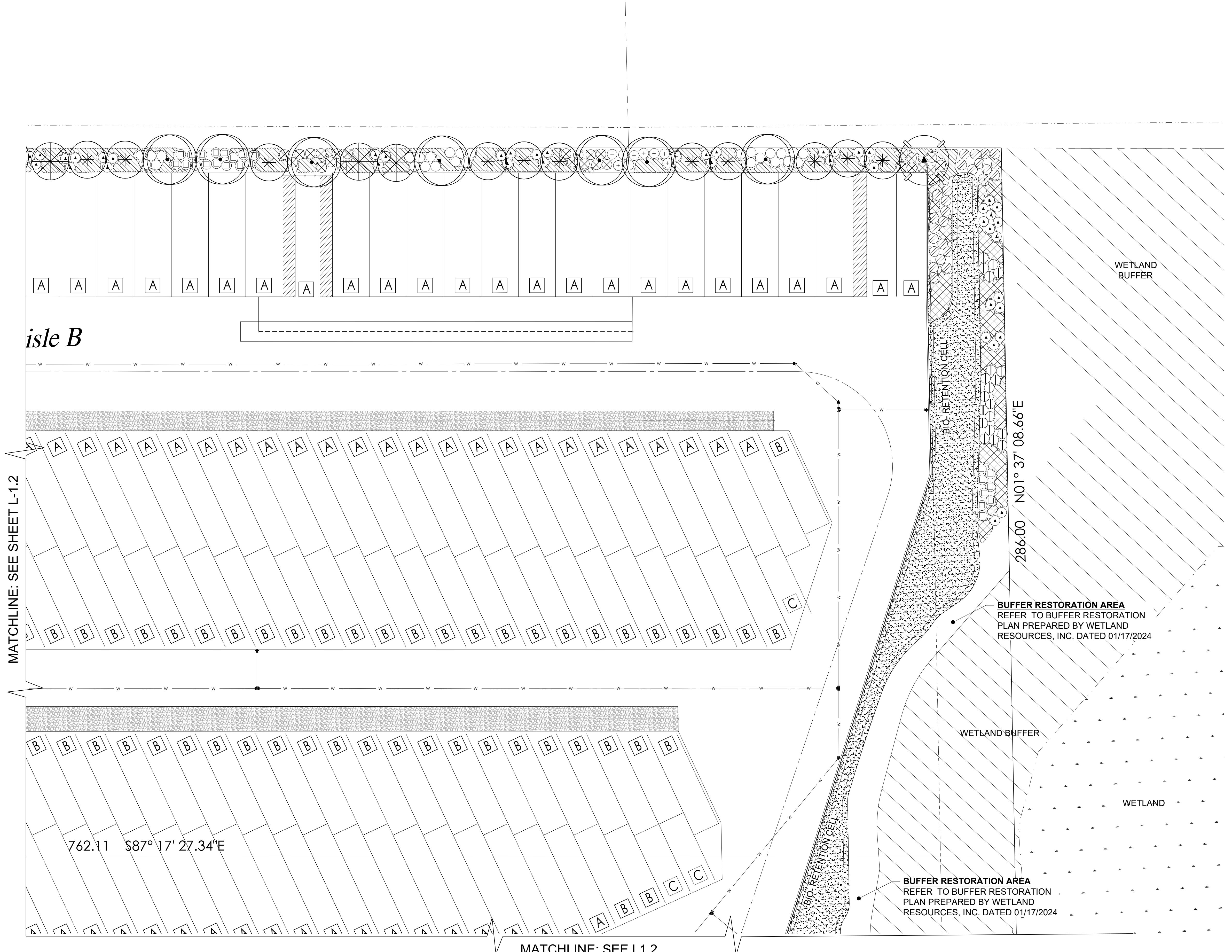
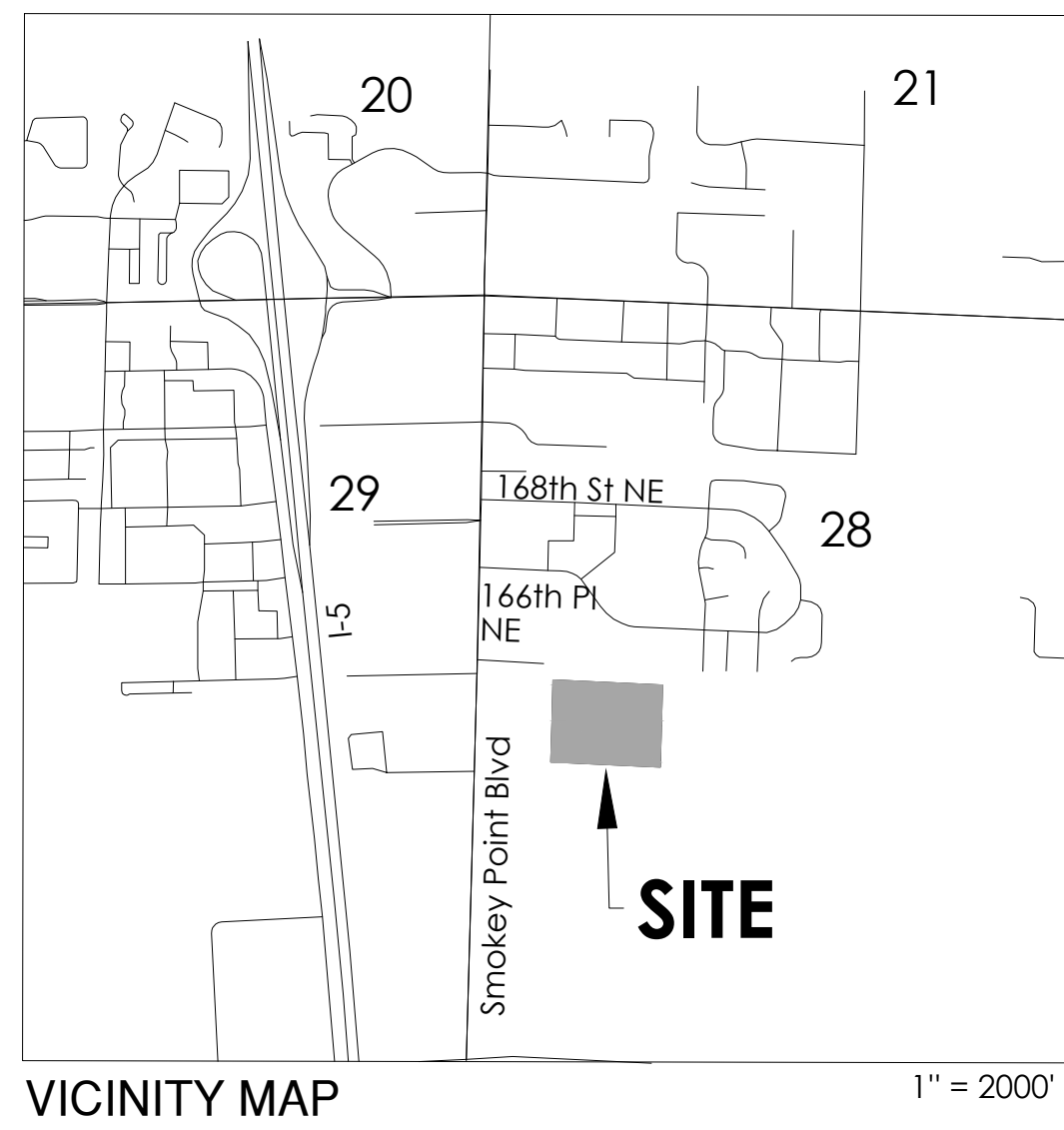


PROJECT LEAD:  
 CHECKED BY:  
 DRAWN BY:  
 APPLICATION DATE:  
 SITE APPROVAL DATE:  
 REVISION DATE:  
 LDA APPROVAL:  
 AS-BUILT:



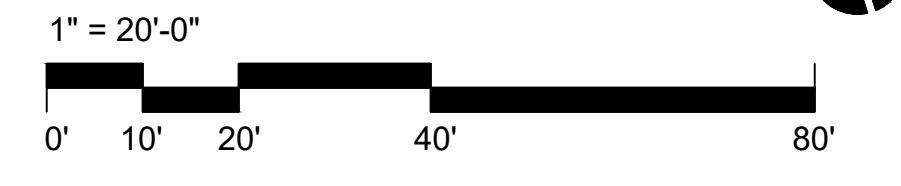
LANDSCAPE PLAN





KEY PLAN

LANDSCAPE PLAN



**LAND TECHNOLOGIES**  
 18820 Third Avenue, N.E.  
 Arlington, WA, 98223  
 360-652-9727

**RWA RICHARD WARD ASSOCIATES**  
 LANDSCAPE ARCHITECTS  
 40 LAKE BELLEVUE DRIVE, SUITE #350  
 BELLEVUE, WA 98005  
 PHONE: 206.387.6223  
 E-MAIL: RWA2100@GMAIL.COM

PROJECT LEAD:  
 CHECKED BY:  
 DRAWN BY:  
 APPLICATION DATE:  
 SITE APPROVAL DATE:  
 REVISION DATE:  
 LDA APPROVAL:  
 AS-BUILT:

163 RV Park  
 163XX Smokey Point Blvd, Marysville, WA, 98271  
 A PORTION OF SECTION 28, TOWNSHIP 31 NORTH, RANGE 5 EAST, W.M.

Richard Peterson  
 170 120th Ave NE Ste 203, Bellevue, WA 98005

LANDSCAPE PLANS

L1.3 SHEET of 5  
 04/16/2024

TREES



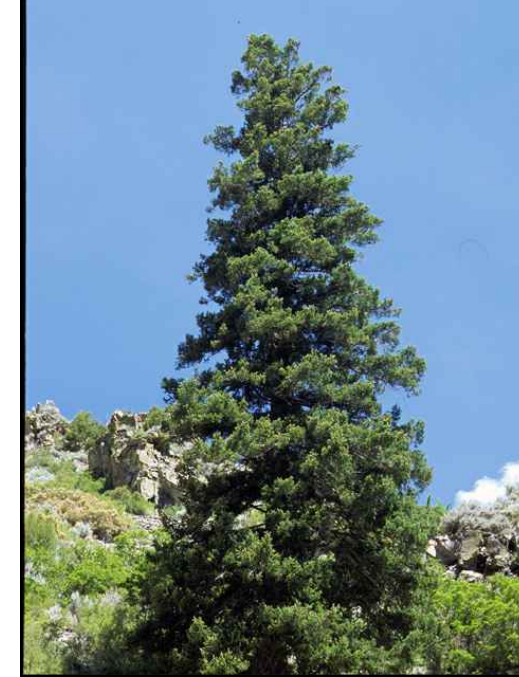
ACER RUBRUM 'ARMSTRONG' / ARMSTRONG RED MAPLE



\* FRAXINUS LATIFOLIA / OREGON ASH



GLEDITSIA TRIACANTHOS 'INERMIS' / THORNLESS HONEY LOCUST



\* PSEUDOTSUGA MENZIESII / DOUGLAS FIR



\* THUJA PLICATA 'FASTIGIATA' / HOGAN CEDAR

SHRUBS



ARBUTUS UNEDO 'COMPACTA' / DWARF STRAWBERRY TREE



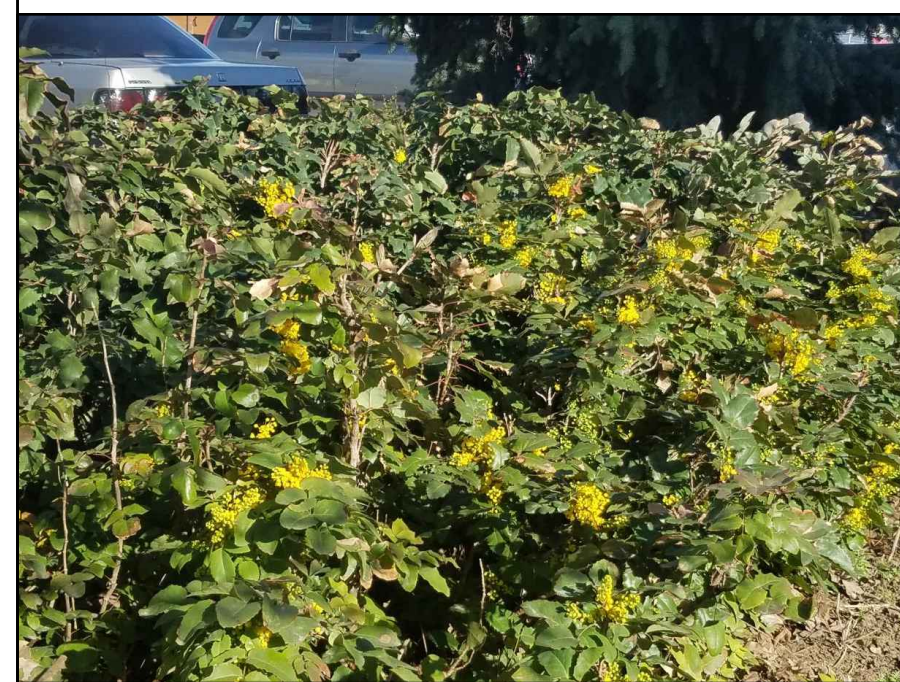
CALAMAGROSTIC 'KARL FOERSTER' / FEATHER REED GRASS



\* CORNUS SERVICEA 'FARROW' / ARTIC FIRE DOGWOOD



EUONYMUS ALATUS 'COMPACTUS' / DWARF BURNING BUSH



\* MAHONIA AQUIFOLIUM / OREGON GRAPE



\* MYRICA CALIFORNICA / PACIFIC WAX MYRTLE



PRUNUS LAUROCERASUS 'OTTO LUYKEN' / OTTO LUYKEN LAUREL



\* SALIX PURPUREA 'NANA' / DWARF PURPLE OISER



THUJA OCCIDENTALIS 'EMERALD GREEN' / ARBORVITEA



PRUNUS LAUROCERASUS 'ZABELIANA' / ZABEL LAUREL



\* ROSA RUGOSA / RAMANAS ROSE

GROUND COVER / GRASSES



\* ARCTOSTAPHYLOS UVA-URSI / KINNICKINNICK



\* POLYSTICHUM MUNITUM / SWORD FERN



PRUNUS LAUROCERASUS 'MOUNT VERNON'



TRIFOLIUM REPENS 'PIPOLINA' / DUTCH MICRO-WHITE CLOVER

PLANT PALETTE - SMOKEY POINT

SYMBOL	BOTANICAL / COMMON PLANT NAME	SIZE	QTY	REMARKS
<b>TREES</b>				
○	ACER RUBRUM 'ARMSTRONG' / ARMSTRONG RED MAPLE	2" CAL	38	(D) B&B
* ○	FRAXINUS LATIFOLIA / OREGON ASH	2" CAL	5	(D) B&B
○	GLEDITSIA TRIACANTHOS 'INERMIS' / THORNLESS HONEY LOCUST	2" CAL	3	(E) B&B
* ○	PSEUDOTSUGA MENZIESII / DOUGLAS FIR	6" HT	29	(E) B&B
* ○	THUJA PLICATA 'FASTIGIATA' / HOGAN CEDAR	6" HT	38	(E) B&B

SYMBOL	BOTANICAL / COMMON PLANT NAME	SIZE	QTY	REMARKS
<b>SHRUBS</b>				
○	ARBUTUS UNEDO 'COMPACTA' / DWARF STRAWBERRY TREE	2 GAL	73	(E) CONTAINER
○	CALAMAGROSTIC 'KARL FOERSTER' / FEATHER REED GRASS	1 GAL	18	(E) CONTAINER, PLANT @ 18" O.C.
* ○	CORNUS SERVICEA 'FARROW' / ARTIC FIRE DOGWOOD	2 GAL	85	(D) CONTAINER
⊗	EUONYMUS ALATUS 'COMPACTUS' / DWARF BURNING BUSH	2 GAL	108	(D) CONTAINER
* ○	MAHONIA AQUIFOLIUM / OREGON GRAPE	2 GAL	132	(E) CONTAINER
* ○	MYRICA CALIFORNICA / PACIFIC WAX MYRTLE	2 GAL	73	(E) CONTAINER
○	PRUNUS LAUROCERASUS 'OTTO LUYKEN' / OTTO LUYKEN LAUREL	2 GAL	6	(E) CONTAINER
○	PRUNUS LAUROCERASUS 'ZABELIANA' / ZABEL LAUREL	2 GAL	89	(E) CONTAINER
* ○	ROSA RUGOSA / RAMANAS ROSE	2 GAL	23	
* ○	SALIX PURPUREA 'NANA' / DWARF PURPLE OISER	2 GAL	72	(D) CONTAINER
○	THUJA OCCIDENTALIS 'EMERALD GREEN' / ARBORVITEA	5' HT	8	(E) B&B

SYMBOL	BOTANICAL / COMMON PLANT NAME	SIZE	QTY	REMARKS
<b>GROUNDCOVERS / GRASSES / VINES</b>				
* [Grid]	ARCTOSTAPHYLOS UVA-URSI / KINNICKINNICK	4" POTS	170 SF 87 PLANTS	(E) CONTAINER, PLANT @ 18" O.C.
* [Cross-hatch]	POLYSTICHUM MUNITUM / SWORD FERN	1 GAL	5,334 SF 694 PLANTS	(E) CONTAINER @ 36" O.C.
[Diagonal lines]	PRUNUS LAUROCERASUS 'MOUNT VERNON'	1 GAL	5,695 SF 740 PLANTS	(E) CONTAINER @ 36" O.C.
[Dotted]	TRIFOLIUM REPENS 'PIPOLINA' / DUTCH MICRO-WHITE CLOVER		8,769 SF	APPLY SEED @ 2lbs / 1,000 SF

\* INDICATES NATIVE PLANT

NOTES:

- (E): EVERGREEN
- (D): DECIDUOUS
- (P): PERENNIAL
- B&B: BALLED AND BURLAP
- DBH: DIAMETER AT BREAST HEIGHT

PLANT QUANTITIES ARE FOR CONTRACTOR CONVENIENCE ONLY. CONTRACTOR SHALL VERIFY ALL PLANT QUANTITIES PRIOR TO SUBMITTING BID.

ALL SPECIFIED PLANTS SHALL FOLLOW THE STANDARDS ESTABLISHED BY THE AMERICAN STANDARD FOR NURSERY STOCK, ANSI Z60.1-2014 UPDATED AND SHALL BE GRADE #1 IN ALL RESPECTS.

PLANT PALETTE & PHOTO MONTAGE