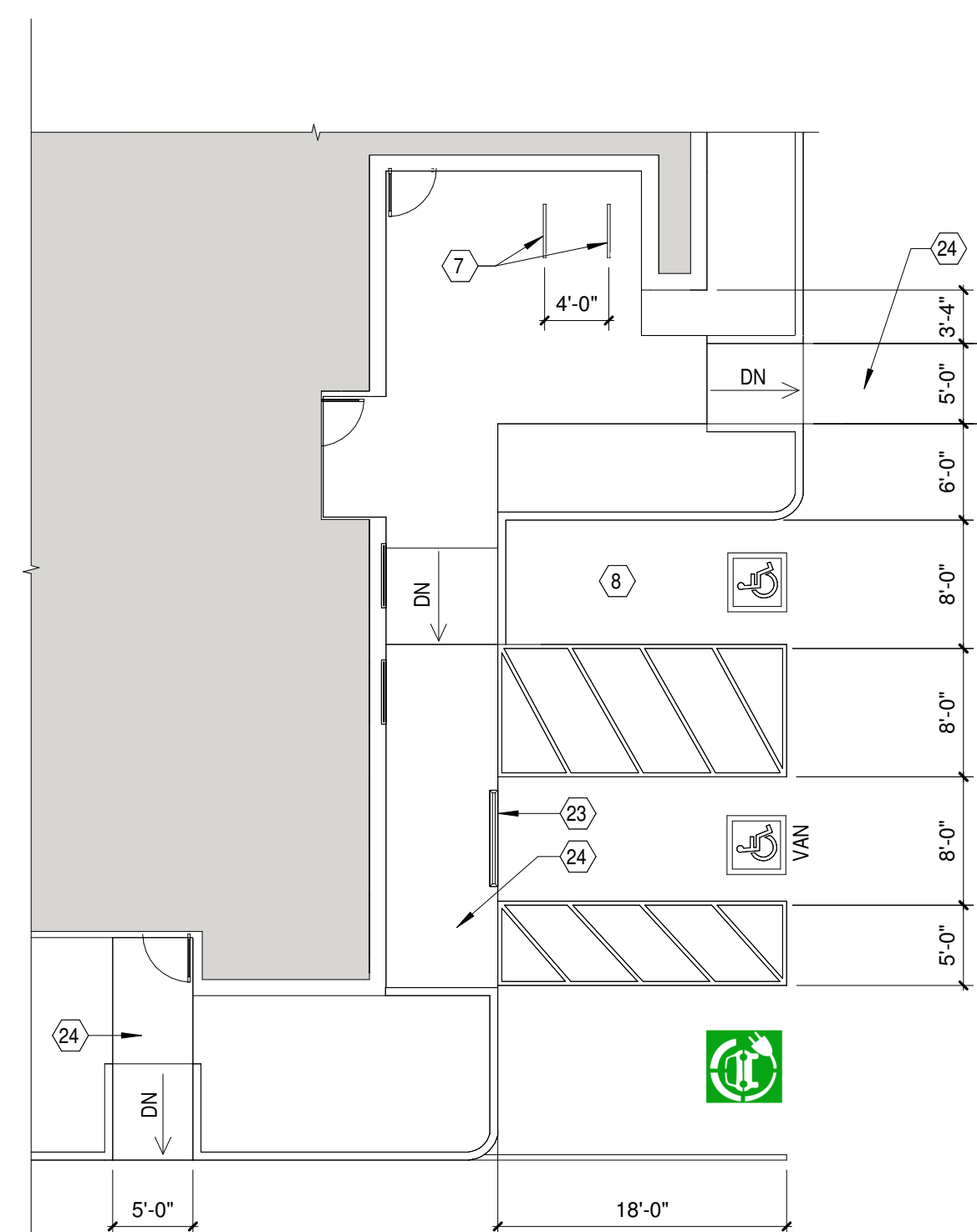
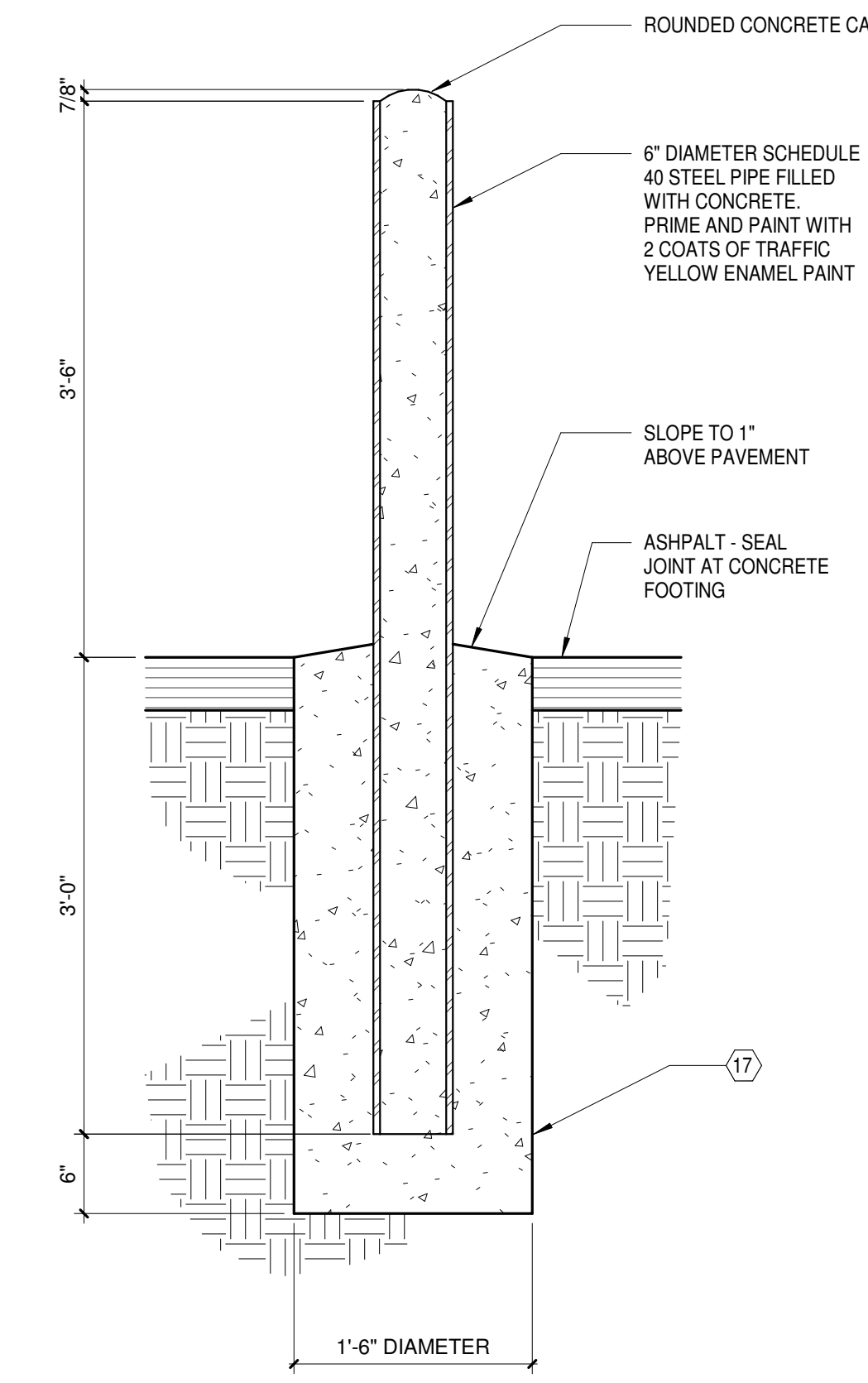


D2 TRASH/RECYCLING ENCLOSURE AND BATTERY STORAGE
A101 1/4" = 1'-0"



D4 PARKING AREA
A101 1" = 10'-0"



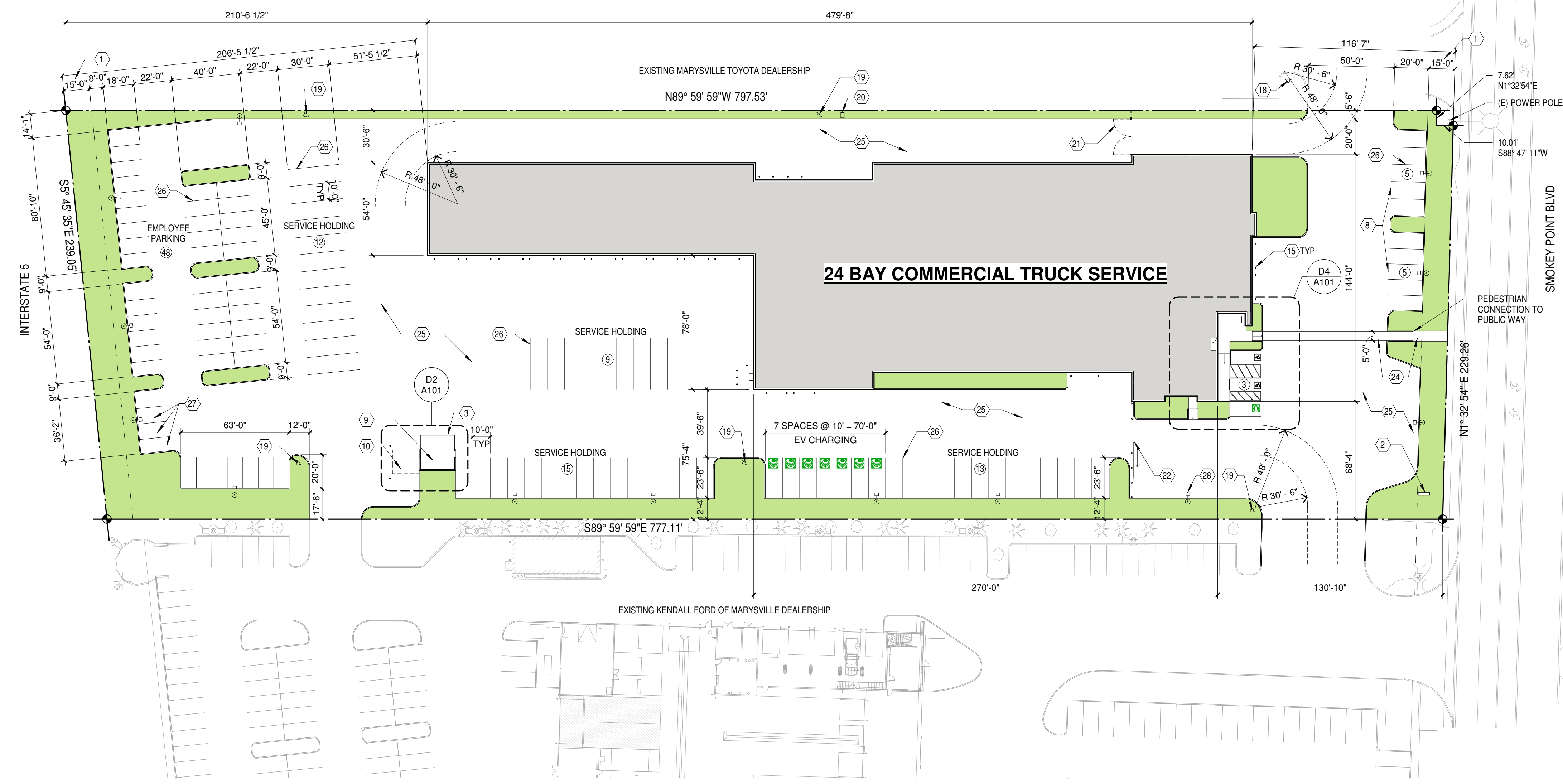
D5 STEEL PIPE BOLLARD DETAIL
A101 1" = 1'-0"

SITE AND BUILDING DATA

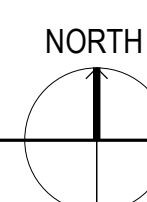
SITE SIZE	188,360 S.F. (4.32 ACRES)
BUILDING SIZE	52,933 S.F.
MAXIMUM IMPERVIOUS SURFACE AREA (85%)	160,106 S.F.
TOTAL IMPERVIOUS SURFACE AREA	160,094 S.F.
IMPERVIOUS SURFACE AREA PERCENTAGE	85%
PARKING:	
MINIMUM REQUIRED	(56) SPACES
CUSTOMER PARKING	(13) SPACES
EMPLOYEE PARKING	(48) SPACES
SERVICE HOLDING	(49) SPACES
RV HOLDING	(2) SPACES
SERVICE HOLDING, EV CHARGING	(7) SPACES

KEYNOTES

- 1 LANDSCAPE SETBACK
- 2 PYLON SIGN
- 3 CONCRETE SLAB ON GRADE
- 4 8x8x16 CMU WALL
- 5 CHAIN-LINK GATES TO PROVIDE 20' CLEAR OPENING WITH SLATS AND CANE BOLTS WITH SLEEVES INTO PAVEMENT TO SECURE GATES IN CLOSED POSITION AND WHEN OPEN 130-DEGREES. NO CENTER POSTS ALLOWED.
- 6 ANGLE 4x4x3/8 WITH 3/8" EXPANSION ANCHORS AT 48" OC WITH VERTICAL LEG TO INTERIOR OF ENCLOSURE
- 7 BIKE RACK
- 8 CUSTOMER PARKING
- 9 TRASH/RECYCLE ENCLOSURE
- 10 ELECTRIC VEHICLE BATTERY STORAGE AREA
- 11 CHAIN-LINK FENCE
- 12 CHAIN-LINK GATES WITH CANE BOLTS WITH SLEEVES INTO PAVEMENT TO SECURE GATES IN CLOSED POSITION AND WHEN OPEN. NO CENTER POSTS ALLOWED.
- 13 ROOF ABOVE
- 14 STEEL PIPE COLUMN
- 15 BOLLARD, TYPICAL-SEE DETAIL D5/A101
- 16 CONCRETE CURB
- 17 CONCRETE FOOTING AND FOUNDATION SYSTEM. SEE STRUCTURAL FOR SIZE AND REINFORCING
- 18 EXISTING FIRE HYDRANT - PROTECT IN PLACE
- 19 FIRE HYDRANT
- 20 FIRE DEPARTMENT CONNECTION (FDC)
- 21 DECORATIVE FENCE AND SWING GATES PROVIDING 20' CLEAR OPENING
- 22 DECORATIVE FENCE AND 20' CLEAR WIDTH SLIDING GATE
- 23 PRECAST CONCRETE WHEEL STOP
- 24 CONCRETE PEDESTRIAN WALKWAY
- 25 ASPHALT PAVEMENT (TYP)
- 26 4" WIDE STRIPING (TYP)
- 27 CARPOOL PARKING STALLS WITH SIGNAGE
- 28 POLE-MOUNTED LIGHT FIXTURES



A3 SITE PLAN
A101 1" = 40'-0"



REVISIONS

NOT FOR CONSTRUCTION

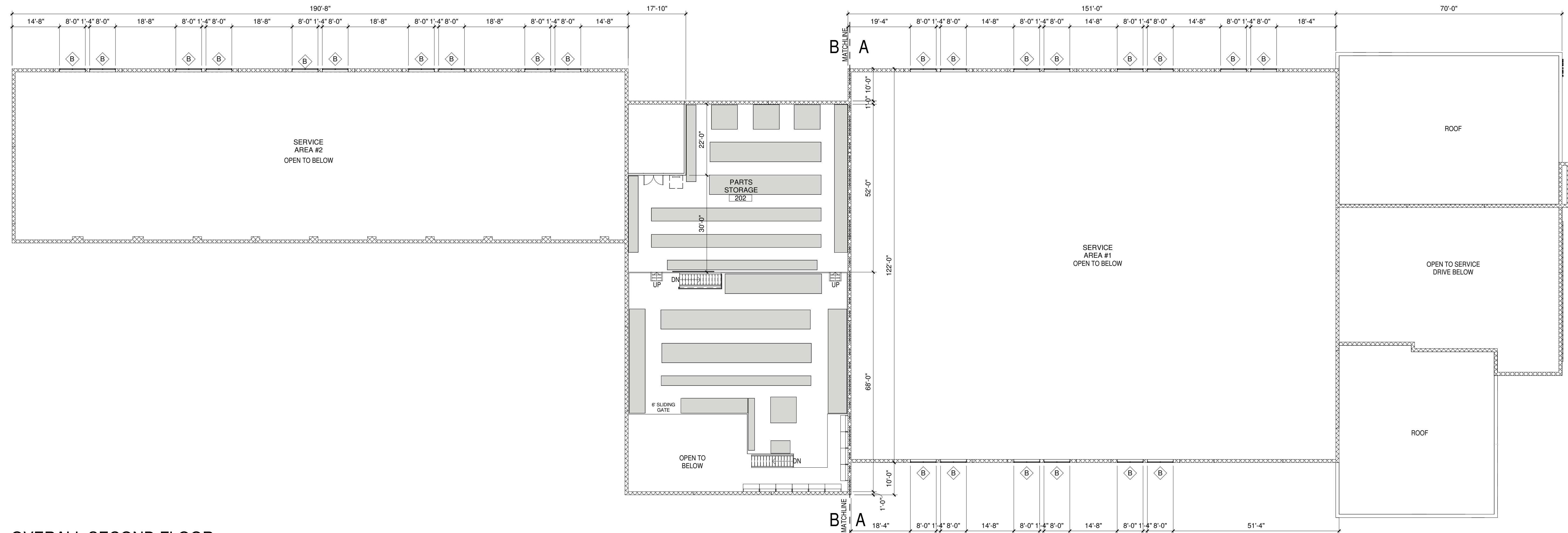
PA
Architects and Planners, Chartered
300 E. Mallard Drive, Suite 325, Boise Idaho 83706

KENDALL AUTO GROUP
FORD PRO ELITE
COMMERCIAL VEHICLE SERVICE CENTER
16100 SMOKEY POINT BLVD
MARYSVILLE, WA 98271

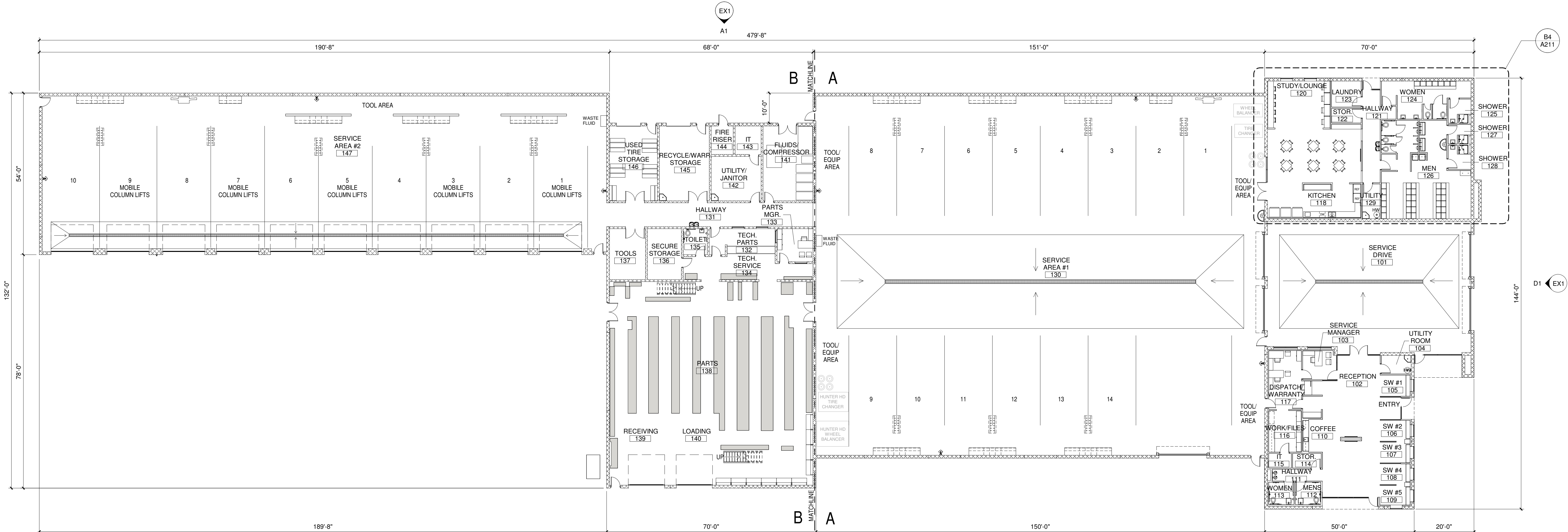
DATE: OCT 17, 2023
PROJECT NO: 2310.00
SHEET:
A101
SITE PLAN

GENERAL NOTES

- A. DIMENSIONS ARE TO: GRIDLINES
FACE OF STUDS (FOS) OR FURRING
FACE OF CONCRETE UNIT MASONRY (CMU)
CENTERLINE OF WINDOWS AND DOORS
- B. FOR WALL, FLOOR AND ROOF ASSEMBLIES SEE DRAWING A501.
- C. DOOR SCHEDULE AND FRAME TYPES ARE ON DRAWING A601
- D. WINDOW AND STOREFRONT FRAME TYPES ARE ON DRAWING A601.
- E. ROOM FINISH SCHEDULE IS ON DRAWING A602.
- F. FOR TYPICAL ACCESSIBILITY CLEARANCES AND MOUNTING HEIGHTS SEE DRAWING A211.
- G. VERIFY FIRE EXTINGUISHER QUANTITY AND LOCATIONS WITH THE FIRE MARSHAL.
- H. PROVIDE BLOCKING OR METAL BACKING IN WALLS AND PARTITIONS FOR ALL WALL-MOUNTED ITEMS.
- I. PIPING ROUGH-IN STUD-UPS ARE TO BE AT CENTERLINE OF WALLS AND PARTITIONS. DIMENSIONAL LOCATIONS OF WALLS AND PARTITIONS MAY BE MOVED BY NO MORE THAN 1" TO ADJUST FOR ROUGH-IN MISLOCATIONS; HOWEVER, CONTRACTOR IS RESPONSIBLE FOR MAINTAINING ALL ACCESSIBILITY CLEARANCES.
- J. WHERE PARTITIONS TERMINATE AT WINDOW MULLIONS, THE CENTERLINE OF THE PARTITION IS TO BE AT THE CENTERLINE OF THE MULLION AND THE WINDOW MULLIONS GOVERN DIMENSIONALLY.
- K. WHERE PARTITIONS ARE AT CORNERS OF COLUMN FURRING, LOCATE WALL STUDS SO THAT GYPSUM BOARD IS FLUSH WITH GYPSUM BOARD AT COLUMN.



G1 OVERALL SECOND FLOOR
A111 1/16" = 1'-0"



A1 OVERALL FIRST FLOOR
A111 1/16" = 1'-0"

REVISIONS

NOT FOR CONSTRUCTION

Architects and Planners, Chartered
300 E. Mallard Drive, Suite 325, Boise Idaho 83706

KENDALL AUTO GROUP
FORD PRO ELITE
COMMERCIAL VEHICLE SERVICE CENTER
16100 SMOKEY POINT BLVD
MARYSVILLE, WA 98271

DATE: OCT 17, 2023
PROJECT NO: 2310.00
SHEET:
A111
OVERALL FLOOR PLANS

10/17/2023 11:08:01 AM
C:\Users\Cory\Documents\2310_Kendall Ford Marysville_22_cory\EUD\CV.dwg

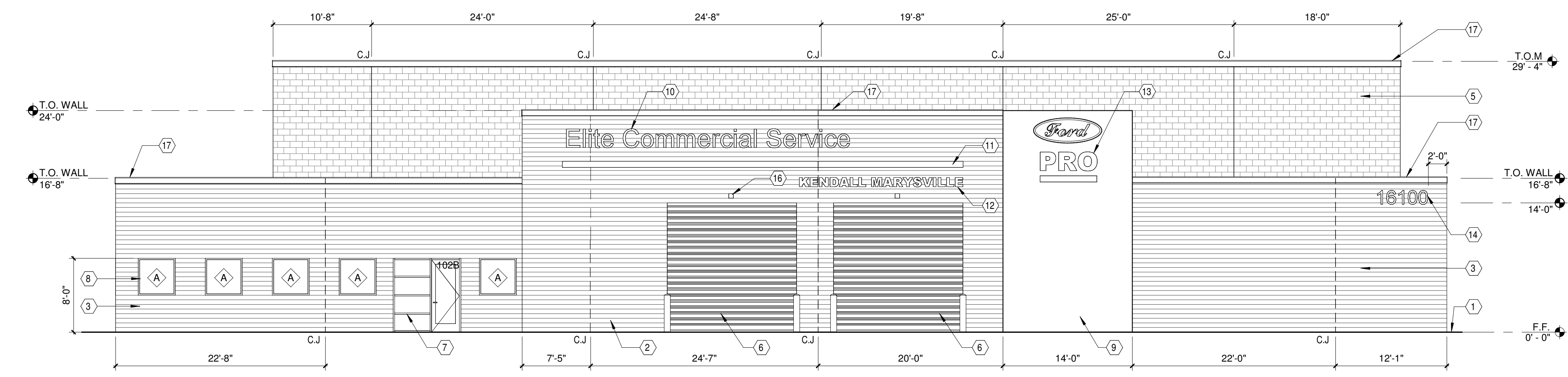
EXTERIOR FINISH SCHEDULE

TAG	ITEM	MATERIAL	MANUFACTURER	FINISH	COLOR	CONTACT
(EG-1)	STOREFRONT ENTRANCES	ALUM	FRAME (KAWNEER), GLASS (PPG)	ANODIZED	NATURAL CLEAR COAT	GLASS (PPG) JOSEPH SENESE 888 774 4332 FRAME (KAWNEER) DOUG HESS 470 388 8235
(MP-1)	CLERESTORY WINDOWS (STOREFRONTS)	ALUM	FRAME (KAWNEER), GLASS (PPG)	ANODIZED	NATURAL CLEAR COAT	
(MP-2)	WALL - CORRUGATED METAL PANEL	METAL	ARCONIC-4HC	PRE-FINISHED MP-1	"CASTLE GREY" WITH 4" HORIZONTAL CORRUGATIONS	ALLISA BOLLINGER 478 230 3800
(CMU-1)	WALL - MASONRY	CMU-SPLIT FACE	BASELITE	INTEGRAL COLOR	"SLATE GREY" WITH 4" HORIZONTAL CORRUGATIONS	ALLISA BOLLINGER 478 230 3800
(CMU-2)	WALL - MASONRY	CMU-GROUND FACE	BASELITE	INTEGRAL COLOR	MATCH-SW 7019 "GAUNTLET GREY"	KENNEDY PETERSON 253 964 5000
	WALL - COPING	METAL		PRE-FINISHED	COLOR TO MATCH WALL	
(OH-1)	DOORS AND FRAMES	STEEL		PAINTED EP-1	MATCH SHERWIN WILLIAMS SW 7019 "GAUNTLET GREY"	
(OH-2)	OVERHEAD DOORS-HIGH SPEED COILING	ALUM	RYTEC	ANODIZED	NATURAL CLEAR COAT	
(OH-3)	OVERHEAD DOORS-ALUMINUM SECTIONAL	ALUM/METAL	OVERHEAD DOOR COMPANY	ANODIZED	NATURAL CLEAR COAT/MATCH-SW 7019 "GAUNTLET GREY"	
(OH-4)	OVERHEAD DOORS-INSULATED SECTIONAL	METAL	OVERHEAD DOOR COMPANY	PRE-FINISHED	MATCH SHERWIN WILLIAMS SW 7016 "MINDFUL GREY"	TOM ZIMMERMAN 276 490 8775
	MISCELLANEOUS FLASHING	METAL		PAINTED	MATCH ADJACENT MATERIAL. PRE-FINISHED WHERE POSSIBLE	
	ROOF LADDERS	STEEL		PAINTED	MATCH ADJACENT WALL	
	AWNING (GRABBER BAR)	METAL	AGI	PRE-FINISHED	SW FMC001 "FORD BLUE"	SHERRY DOPWELL 888 856 7880
	SIGNAGE	METAL HOUSING	AGI	PRE-FINISHED	SW FMC001 "FORD BLUE"	SHERRY DOPWELL 888 856 7880
	BOLLARDS	STEEL		PAINTED	"TRAFFIC YELLOW"	
	LOUVERS	METAL		PRE-FINISHED	AS SELECTED TO BLEND WITH ADJACENT MATERIAL	
	EXHAUST WALL CAPS	METAL		PAINTED	MATCH ADJACENT MATERIAL	
(EP-1)	PAINT				SW 7019 "GAUNTLET GREY"	DAWN GENOWA 248 660 3067
(EP-2)	PAINT				SW 7016 "MINDFUL GREY"	DAWN GENOWA 248 660 3067
(EP-3)	FORD MONOLITH SIGN	ACM PANELS	AGI	PRE-FINISHED	SW FMC001 "FORD BLUE"	SHERRY DOPWELL 888 856 7880

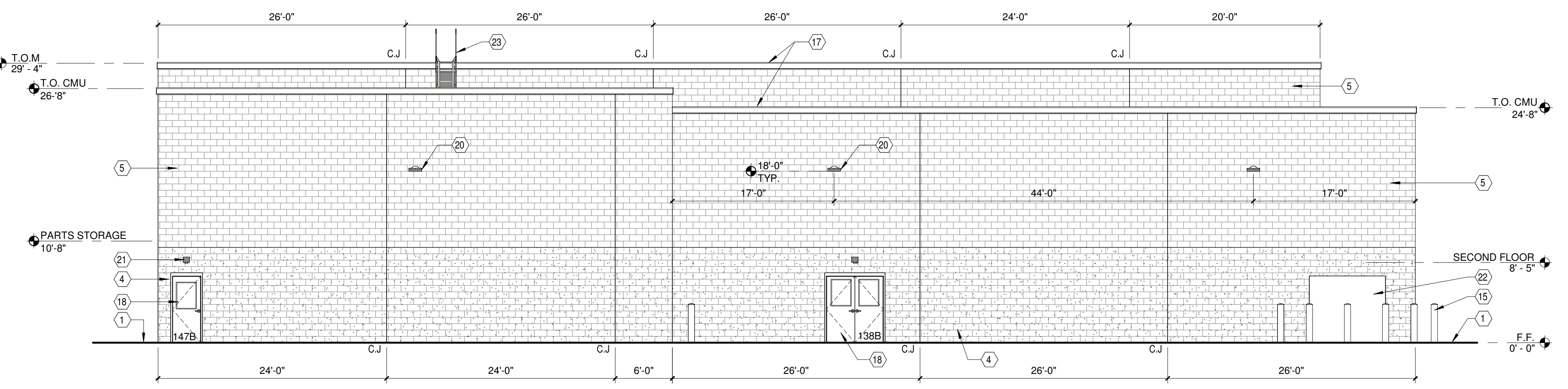
- NOTES:
- ARCONIC "SLATE GREY" MATCHES SHERWIN WILLIAMS "GAUNTLET GREY"
 - ARCONIC "CASTLE GREY" MATCHES SHERWIN WILLIAMS "MINDFUL GREY"
 - ACM - ALUMINUM COMPOSITE MATERIAL
 - ALL SIGNAGE PROVIDED AND INSTALLED BY FORD'S VENDOR AGI.

KEYNOTES

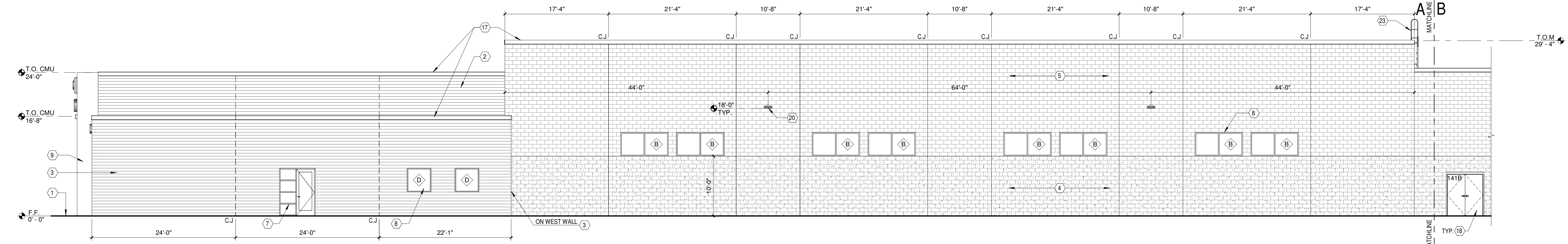
- FINISH GRADE OR FINISH PAVEMENT PER CIVIL
- "ARCONIC" 4" HORIZONTAL CORRUGATED METAL PANEL - (MP-1) "CASTLE GREY"
- "ARCONIC" 4" HORIZONTAL CORRUGATED METAL PANEL - (MP-2) "SLATE GREY"
- "BASELITE", 12" CMU, SPLIT FACE, INTEGRAL COLOR TO MATCH SHERWIN WILLIAMS "GAUNTLET GREY"
- "BASELITE", 12" CMU, GROUND FACE, INTEGRAL COLOR TO MATCH SHERWIN WILLIAMS "GAUNTLET GREY"
- FULL VISION, HIGH SPEED OVERHEAD COILING DOOR WITH CLEAR ANODIZED FINISH
- "KAWNEER" TRIFAB 451 UT ALUMINUM STOREFRONT ENTRANCE FRAMING WITH "SOLARBAN 80" INSULATED GLAZING UNIT, CLEAR ANODIZED FINISH
- "KAWNEER" TRIFAB 451 UT ALUMINUM WINDOW WITH "SOLARBAN 80" INSULATED GLAZING UNIT, CLEAR ANODIZED FINISH
- ACM PANEL MONOLITH "FORD BLUE"
- 24" HIGH ILLUMINATED LETTERSET
- 8" DEEP NON-ILLUMINATED SLIM-LINE AWNING, "GRABBER BLUE"
- 12" ILLUMINATED DEALER NAME LETTERS
- "FORD PRO" SIGNAGE ASSEMBLY
- 18" HIGH CUSTOM ALUMINUM PIN MOUNTED BUILDING ADDRESS NUMBERS
- 6" CONCRETE FILLED PIPE BOLLARD, PAINTED TRAFFIC YELLOW
- OVERHEAD MOTOR MOTION DETECTOR
- 24 GA. PRE-FINISHED PARAPET COPING
- INSULATED HOLLOW METAL DOORS AND FRAME, PAINTED TO MATCH ADJACENT WALL COLOR
- INSULATED STEEL OVERHEAD SECTIONAL DOOR, POWDER-COATED FINISH TO MATCH ADJACENT WALL COLOR
- WALL MOUNTED LIGHT
- WALL MOUNTED EGRESS LIGHT
- MAIN SWITCH BOARD (MSB)
- ROOF LADDER - PAINT TO MATCH WALL COLOR



D1 EAST ELEVATION
A201 1/8" = 1'-0"



C1 WEST ELEVATION
A201 1/8" = 1'-0"



A1 NORTH ELEVATION
A201 1/8" = 1'-0"

NOT FOR CONSTRUCTION

RAA
Architects and Planners, Chartered
300 E. Mallard Drive, Suite 325, Boise Idaho 83706

KENDALL AUTO GROUP
FORD PRO ELITE
COMMERCIAL VEHICLE SERVICE CENTER
16100 SMOKEY POINT BLVD
MARYSVILLE, WA 98271

1 2 3 4 5 6

EXTERIOR FINISH SCHEDULE

TAG	ITEM	MATERIAL	MANUFACTURER	FINISH	COLOR	CONTACT
(EG-1)	STOREFRONTS/ENTRANCES	ALUM	FRAME (KAWNEER), GLASS (PPG)	ANODIZED	NATURAL CLEAR COAT	GLASS (PPG) JOSEPH SENNESE 888 774 4332 FRAME (KAWNEER) DOUG HESS 570 388 8235
(MP-1)	CLERESTORY WINDOWS (STOREFRONTS)	ALUM	FRAME (KAWNEER), GLASS (PPG)	ANODIZED	NATURAL CLEAR COAT	
(MP-2)	WALL - CORRUGATED METAL PANEL	METAL	ARCONIC-4HC	PRE-FINISHED MP-1	"CASTLE GREY" WITH 4" HORIZONTAL CORRUGATIONS	ALLISA BOLLINGER 478 230 3800
(CMU-1)	WALL - MASONRY	CMU-SPLIT FACE	BASELITE	INTEGRAL COLOR	MATCH-SW 7019 "GAUNTLET GREY"	KENNEDY PETERSON 253 964 5000
(CMU-2)	WALL - MASONRY	CMU-GROUND FACE	BASELITE	INTEGRAL COLOR	MATCH-SW 7019 "GAUNTLET GREY"	KENNEDY PETERSON 253 964 5000
	WALL - COPING	METAL		PRE-FINISHED	COLOR TO MATCH WALL	
	DOORS AND FRAMES	STEEL		PAINTED EP-1	MATCH SHERWIN WILLIAMS SW 7019 "GAUNTLET GREY"	
(OH-1)	OVERHEAD DOORS-HIGH SPEED COILING	ALUM	RYTEC	ANODIZED	NATURAL CLEAR COAT	
(OH-2)	OVERHEAD DOORS-ALUMINUM SECTIONAL	ALUM/METAL	OVERHEAD DOOR COMPANY	ANODIZED	NATURAL CLEAR COAT/MATCH-SW 7019 "GAUNTLET GREY"	
(OH-3)	OVERHEAD DOORS-INSULATED SECTIONAL	METAL	OVERHEAD DOOR COMPANY	PRE-FINISHED	MATCH SHERWIN WILLIAMS SW 7016 "MINDFUL GREY"	TOM ZIMMERMAN 276 490 8775
	MISCELLANEOUS FLASHING	METAL		PAINTED	MATCH ADJACENT MATERIAL. PRE-FINISHED WHERE POSSIBLE	
	ROOF LADDERS	STEEL		PAINTED	MATCH ADJACENT WALL	
	AWNING (GRABBER BAR)	METAL	AGI	PRE-FINISHED	SW FMC001 "FORD BLUE"	SHERRY DOPWELL 888 856 7880
	SIGNAGE	METAL HOUSING	AGI	PRE-FINISHED	SW FMC001 "FORD BLUE"	SHERRY DOPWELL 888 856 7880
	BOLLARDS	STEEL		PAINTED	"TRAFFIC YELLOW"	
	LOUVERS	METAL		PRE-FINISHED	AS SELECTED TO BLEND WITH ADJACENT MATERIAL	
	EXHAUST WALL CAPS	METAL		PAINTED	MATCH ADJACENT MATERIAL	
(EP-1)	PAINT				SW 7019 "GAUNTLET GREY"	DAWN GENOWA 248 660 3067
(EP-2)	PAINT				SW 7016 "MINDFUL GREY"	DAWN GENOWA 248 660 3067
(EP-3)	FORD MONOLITH SIGN	ACM PANELS	AGI	PRE-FINISHED	SW FMC001 "FORD BLUE"	SHERRY DOPWELL 888 856 7880

- NOTES:
- ARCONIC "SLATE GREY" MATCHES SHERWIN WILLIAMS "GAUNTLET GREY."
 - ARCONIC "CASTLE GREY" MATCHES SHERWIN WILLIAMS "MINDFUL GREY."
 - ACM - ALUMINUM COMPOSITE MATERIAL
 - ALL SIGNAGE PROVIDED AND INSTALLED BY FORD'S VENDOR AGI.

KEYNOTES

- FINISH GRADE OR FINISH PAVEMENT PER CIVIL
- "ARCONIC" 4" HORIZONTAL CORRUGATED METAL PANEL (MP-1) "CASTLE GREY"
- "ARCONIC" 4" HORIZONTAL CORRUGATED METAL PANEL (MP-2) "SLATE GREY"
- "BASELITE" 12" CMU SPLIT-FACE. INTEGRAL COLOR TO MATCH SHERWIN WILLIAMS "GAUNTLET GREY"
- "BASELITE" 12" CMU GROUND FACE. INTEGRAL COLOR TO MATCH SHERWIN WILLIAMS "GAUNTLET GREY"
- FULL VISION, HIGH SPEED OVERHEAD COILING DOOR WITH CLEAR ANODIZED FINISH
- "KAWNEER" TRIFAB 451 UT ALUMINUM STOREFRONT ENTRANCE FRAMING WITH "SOLARBAN 80" INSULATED GLAZING UNIT, CLEAR ANODIZED FINISH
- "KAWNEER" TRIFAB 451 UT ALUMINUM WINDOW WITH "SOLARBAN 80" INSULATED GLAZING UNIT, CLEAR ANODIZED FINISH
- 24 GA. PRE-FINISHED PARAPET COPING
- ALUMINUM OVERHEAD SECTIONAL METAL-SKINNED PANELS IN NON-GLAZED SECTIONS
- INSULATED HOLLOW METAL DOORS AND FRAME. PAINTED TO MATCH ADJACENT WALL COLOR
- ALUMINUM VEHICLE EXHAUST PORT INSTALLED IN OVERHEAD DOOR WAPES PANEL
- 6" CONCRETE FILLED PIPE BOLLARD, PAINTED TRAFFIC YELLOW
- OVERHEAD MOTOR MOTION DETECTOR
- WALL MOUNTED LIGHT
- WALL MOUNTED EGRESS LIGHT
- ROOF LADDER - PAINT TO MATCH WALL COLOR

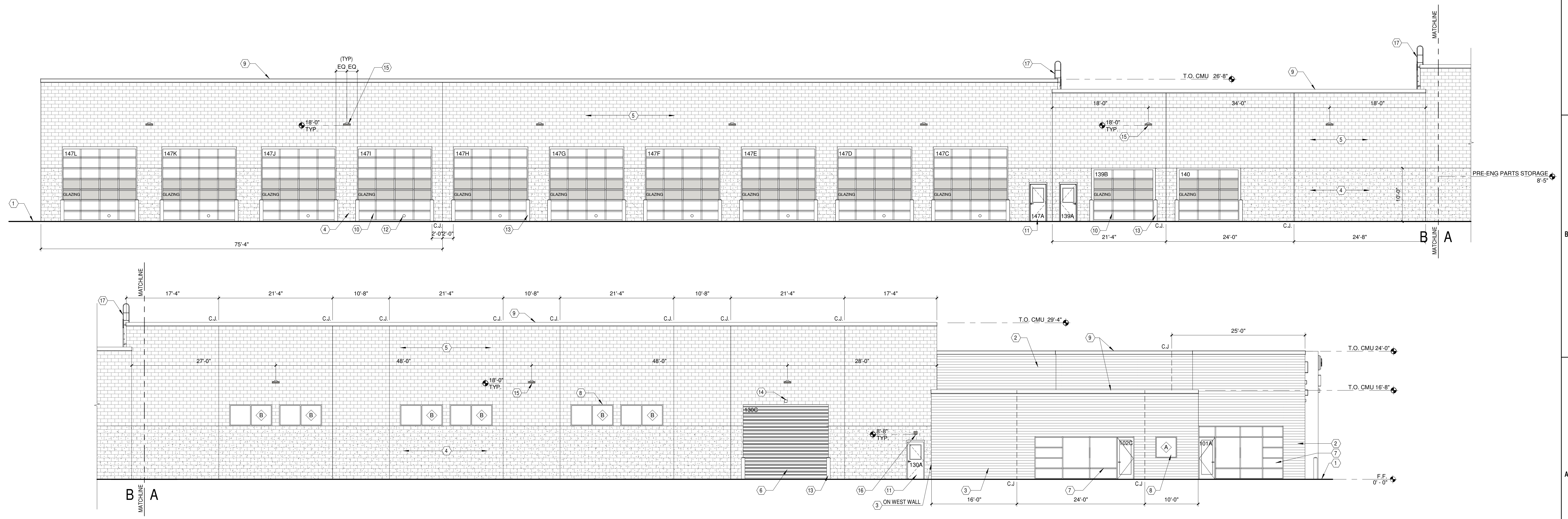
REVISIONS

NOT FOR CONSTRUCTION

PA.
Architects and Planners, Chartered
300 E. Mallard Drive, Suite 325, Boise Idaho 83706

KENDALL AUTO GROUP
FORD PRO ELITE
COMMERCIAL VEHICLE SERVICE CENTER
16100 SMOKEY POINT BLVD
MARYSVILLE, WA 98271

DATE: OCT 17, 2023
PROJECT NO. 2310.00
SHEET:
A202
EXTERIOR ELEVATIONS



A1 SOUTH ELEVATION
A202 1/8" = 1'-0"

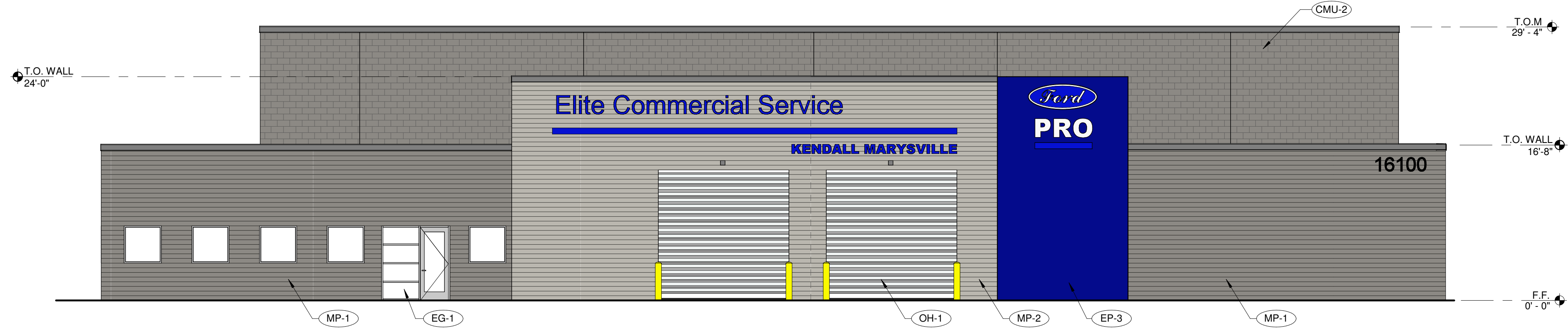
1 2 3 4 5 6

10/18/2023 3:14:49 PM
C:\Users\Copy\Documents\2310_Kendall Ford_Marysville_22_copy\ELEV.dwg

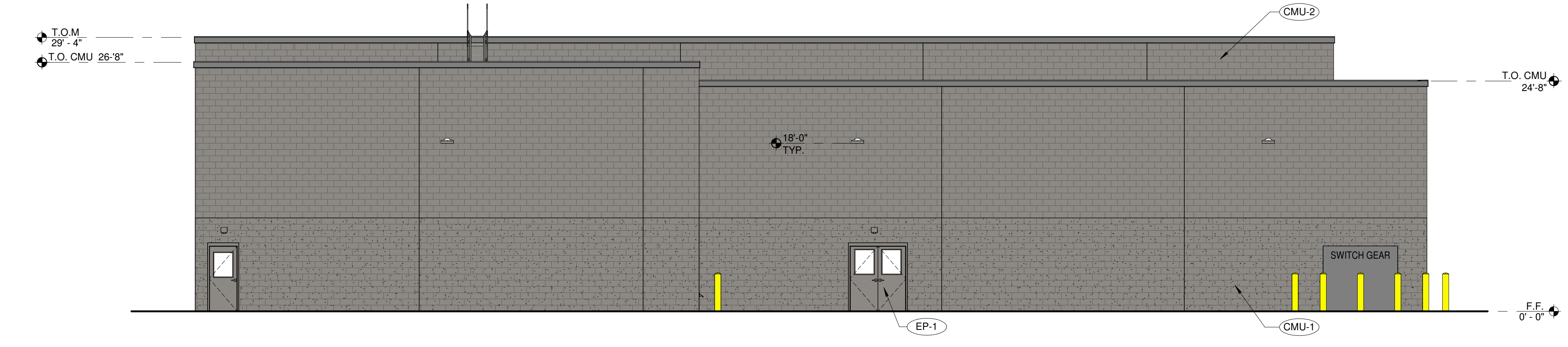
EXTERIOR FINISH SCHEDULE

TAG	ITEM	MATERIAL	MANUFACTURER	FINISH	COLOR	CONTACT
(EG-1)	STOREFRONT ENTRANCES	ALUM	FRAME (KAWNEER), GLASS (PPG)	ANODIZED	NATURAL CLEAR COAT	GLASS (PPG)-JOSEPH SENNESE 888 774 4332 FRAME (KAWNEER) DOUG HESS-870 388 8235
(MP-1)	CLERESTORY WINDOWS (STOREFRONTS)	ALUM	FRAME (KAWNEER), GLASS (PPG)	ANODIZED	NATURAL CLEAR COAT	
(MP-1)	WALL - CORRUGATED METAL PANEL	METAL	ARCONIC-4HC	PRE-FINISHED MP-1	"CASTLE GREY" WITH 4" HORIZONTAL CORRUGATIONS	ALLISA BOLLINGER-478 230 3800
(MP-2)	WALL - CORRUGATED METAL PANEL	METAL	ARCONIC-4HC	PRE-FINISHED MP-2	"SLATE GREY" WITH 4" HORIZONTAL CORRUGATIONS	ALLISA BOLLINGER-478 230 3800
(CMU-1)	WALL - MASONRY	CMU-SPLIT FACE	BASELITE	INTEGRAL COLOR	MATCH-SW 7019 "GAUNTLET GREY"	KENNEDY PETERSON-253 964 5000
(CMU-2)	WALL - MASONRY	CMU-GROUND FACE	BASELITE	INTEGRAL COLOR	MATCH-SW 7019 "GAUNTLET GREY"	KENNEDY PETERSON-253 964 5000
	WALL - COPING	METAL		PRE-FINISHED	COLOR TO MATCH WALL	
(OH-1)	DOORS AND FRAMES	STEEL		PAINTED EP-1	MATCH SHERWIN WILLIAMS SW 7019 "GAUNTLET GREY"	
(OH-2)	OVERHEAD DOORS-ALUMINUM SECTIONAL	ALUM/METAL	OVERHEAD DOOR COMPANY	ANODIZED	NATURAL CLEAR COAT/MATCH-SW 7019 "GAUNTLET GREY"	
(OH-3)	OVERHEAD DOORS-INSULATED SECTIONAL	METAL	OVERHEAD DOOR COMPANY	PRE-FINISHED	MATCH SHERWIN WILLIAMS SW 7016 "MINDFUL GREY"	TOM ZIMMERMAN 276 490 8775
	MISCELLANEOUS FLASHING	METAL		PAINTED	MATCH ADJACENT MATERIAL. PRE-FINISHED WHERE POSSIBLE	
	ROOF LADDERS	STEEL		PAINTED	MATCH ADJACENT WALL	
	AWNING (GRABBER BAR)	METAL	AGI	PRE-FINISHED	SW FMC001 "FORD BLUE"	SHERRY DOPWELL-888 856 7880
	SIGNAGE	METAL HOUSING	AGI	PRE-FINISHED	SW FMC001 "FORD BLUE"	SHERRY DOPWELL-888 856 7880
	BOLLARDS	STEEL		PAINTED	"TRAFFIC YELLOW"	
	LOUVERS	METAL		PRE-FINISHED	AS SELECTED TO BLEND WITH ADJACENT MATERIAL	
	EXHAUST WALL CAPS	METAL		PAINTED	MATCH ADJACENT MATERIAL	
(EP-1)	PAINT				SW 7019 "GAUNTLET GREY"	DAWN GENOWA-248 660 3067
(EP-2)	PAINT				SW 7016 "MINDFUL GREY"	DAWN GENOWA-248 660 3067
(EP-3)	FORD MONOLITH SIGN	ACM PANELS	AGI	PRE-FINISHED	SW FMC001 "FORD BLUE"	SHERRY DOPWELL-888 856 7880

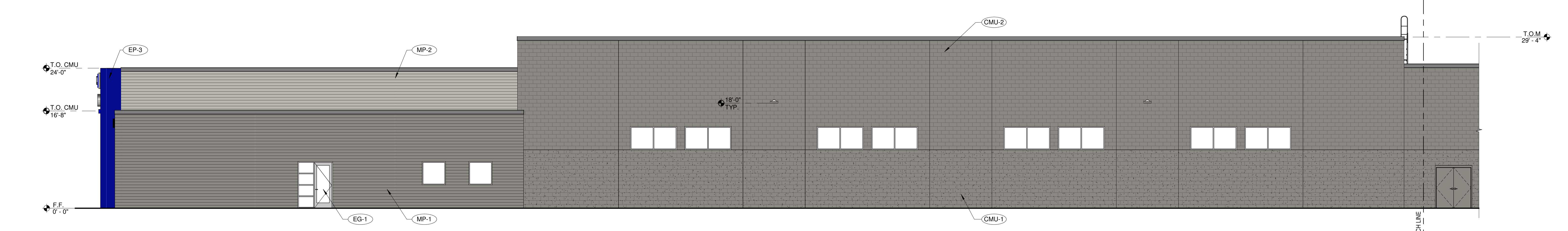
- NOTES:
1. ARCONIC "SLATE GREY" MATCHES SHERWIN WILLIAMS "GAUNTLET GREY"
 2. ARCONIC "CASTLE GREY" MATCHES SHERWIN WILLIAMS "MINDFUL GREY"
 3. ACM - ALUMINUM COMPOSITE MATERIAL
 4. ALL SIGNAGE PROVIDED AND INSTALLED BY FORD'S VENDOR AGI.



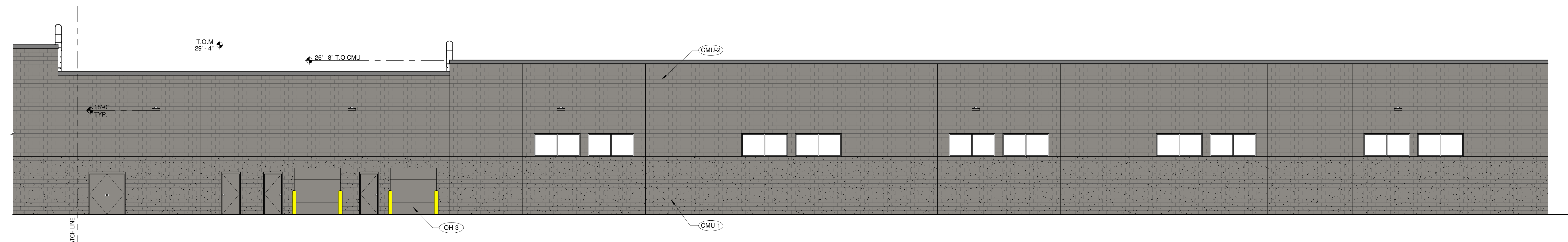
D1 EAST ELEVATION
EX1 1/8" = 1'-0"



C1 WEST ELEVATION
EX1 1/8" = 1'-0"



B1 NORTH ELEVATION
EX1 1/8" = 1'-0"



A1 NORTH ELEVATION
EX1 1/8" = 1'-0"

NOT FOR CONSTRUCTION

RAA
Architects and Planners, Chartered
300 E. Mallard Drive, Suite 325, Boise Idaho 83706

KENDALL AUTO GROUP
FORD PRO ELITE
COMMERCIAL VEHICLE SERVICE CENTER
16100 SMOKEY POINT BLVD
MARYSVILLE, WA 98271

DATE: OCT 17, 2023
PROJECT NO.: 2310.00

SHEET:
EX1
EXTERIOR ELEVATIONS

10/18/2023 3:14:52 PM
 C:\Users\Cody\Documents\2310_Kendall Ford Marysville_22_cory\EX2.DWG

EXTERIOR FINISH SCHEDULE						
TAG	ITEM	MATERIAL	MANUFACTURER	FINISH	COLOR	CONTACT
(EG-1)	STOREFRONTS/ENTRANCES	ALUM	FRAME (KAWNEER), GLASS (PPG)	ANODIZED	NATURAL CLEAR COAT	GLASS (PPG)-JOSEPH SENNESE 888 774 4332 FRAME (KAWNEER) DOUG HESS 470.388.6235
	CLERESTORY WINDOWS (STOREFRONTS)	ALUM	FRAME (KAWNEER), GLASS (PPG)	ANODIZED	NATURAL CLEAR COAT	
(MP-1)	WALL - CORRUGATED METAL PANEL	METAL	ARCONIC-4HC	PRE-FINISHED MP-1	"SLATE GREY" WITH 4" HORIZONTAL CORRUGATIONS	ALLISA BOLLINGER 478.230.3800
(MP-2)	WALL - CORRUGATED METAL PANEL	METAL	ARCONIC-4HC	PRE-FINISHED MP-2	"SLATE GREY" WITH 4" HORIZONTAL CORRUGATIONS	ALLISA BOLLINGER 478.230.3800
(CMU-1)	WALL - MASONRY	CMU-SPLIT FACE	BASELITE	INTEGRAL COLOR	MATCH-SW 7019 "GAUNTLET GREY"	KENNEDY PETERSON 253.964.5000
(CMU-2)	WALL - MASONRY	CMU-GROUND FACE	BASELITE	INTEGRAL COLOR	MATCH-SW 7019 "GAUNTLET GREY"	KENNEDY PETERSON 253.964.5000
	WALL - COPING	METAL		PRE-FINISHED	COLOR TO MATCH WALL	
	DOORS AND FRAMES	STEEL		PAINTED EP-1	MATCH SHERWIN WILLIAMS SW 7019 "GAUNTLET GREY"	
(OH-1)	OVERHEAD DOORS-HIGH SPEED COILING	ALUM	RYTEC	ANODIZED	NATURAL CLEAR COAT	
(OH-2)	OVERHEAD DOORS-ALUMINIUM SECTIONAL	ALUM/METAL	OVERHEAD DOOR COMPANY	ANODIZED	NATURAL CLEAR COAT/MATCH-SW 7019 "GAUNTLET GREY"	
(OH-3)	OVERHEAD DOORS-INSULATED SECTIONAL	METAL	OVERHEAD DOOR COMPANY	PRE-FINISHED	MATCH SHERWIN WILLIAMS SW 7016 "MINDFUL GREY"	TOM ZIMMERMAN 276.490.8775
	MISCELLANEOUS FLASHING	METAL		PAINTED	MATCH ADJACENT MATERIAL. PRE-FINISHED WHERE POSSIBLE	
	ROOF LADDERS	STEEL		PAINTED	MATCH ADJACENT WALL	
	AWNING (GRABBER BAR)	METAL	AGI	PRE-FINISHED	SW FMC001 "FORD BLUE"	SHERRY DOPWELL 888.856.7880
	SIGNAGE	METAL HOUSING	AGI	PRE-FINISHED	SW FMC001 "FORD BLUE"	SHERRY DOPWELL 888.856.7880
	BOLLARDS	STEEL		PAINTED	"TRAFFIC YELLOW"	
	LOUVERS	METAL		PRE-FINISHED	AS SELECTED TO BLEND WITH ADJACENT MATERIAL	
	EXHAUST WALL CAPS	METAL		PAINTED	MATCH ADJACENT MATERIAL	
(EP-1)	PAINT				SW 7019 "GAUNTLET GREY"	DAWN GENOWA 248.660.3067
(EP-2)	PAINT				SW 7016 "MINDFUL GREY"	DAWN GENOWA 248.660.3067
(EP-3)	FORD MONOLITH SIGN	ACM PANELS	AGI	PRE-FINISHED	SW FMC001 "FORD BLUE"	SHERRY DOPWELL 888.856.7880

NOTES:
 1. ARCONIC "SLATE GREY" MATCHES SHERWIN WILLIAMS "GAUNTLET GREY"
 2. ARCONIC "CASTLE GREY" MATCHES SHERWIN WILLIAMS "MINDFUL GREY"
 3. ACM - ALUMINIUM COMPOSITE MATERIAL
 4. ALL SIGNAGE PROVIDED AND INSTALLED BY FORD'S VENDOR AGI.

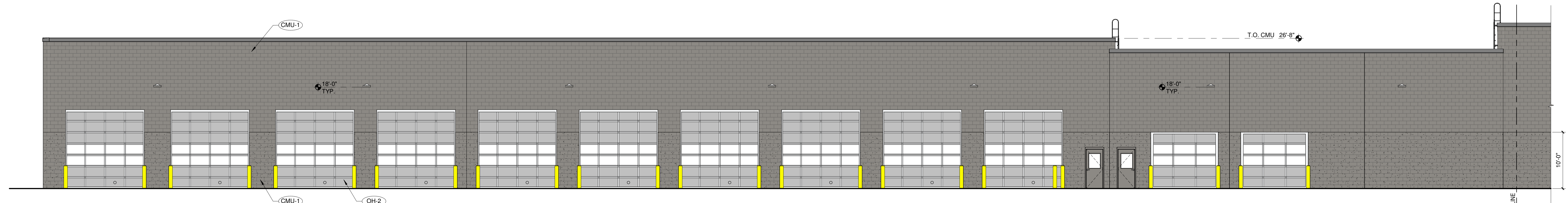
REVISIONS

NOT FOR CONSTRUCTION

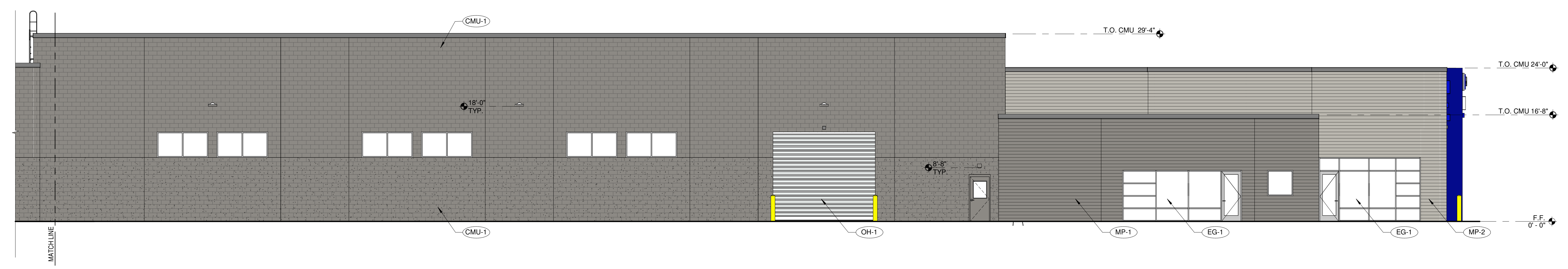
PA.
 Architects and Planners, Chartered
 300 E. Mallard Drive, Suite 325, Boise Idaho 83706

KENDALL AUTO GROUP
FORD PRO ELITE
 COMMERCIAL VEHICLE SERVICE CENTER
 16100 SMOKEY POINT BLVD
 MARYSVILLE, WA 98271

DATE: OCT 17, 2023
 PROJECT NO: 2310.00
 SHEET:
EX2
 EXTERIOR ELEVATIONS



B1
 EX2 SOUTH ELEVATION - COLOR
 1/8" = 1'-0"



A1
 EX2 SOUTH ELEVATION
 1/8" = 1'-0"