

## SUNNYSIDE VILLAGE

3121 66th Ave NE  
Marysville, WA 98270

9/05/2022 CD  
COORDINATION SET

NO.	DATE	DESCRIPTION

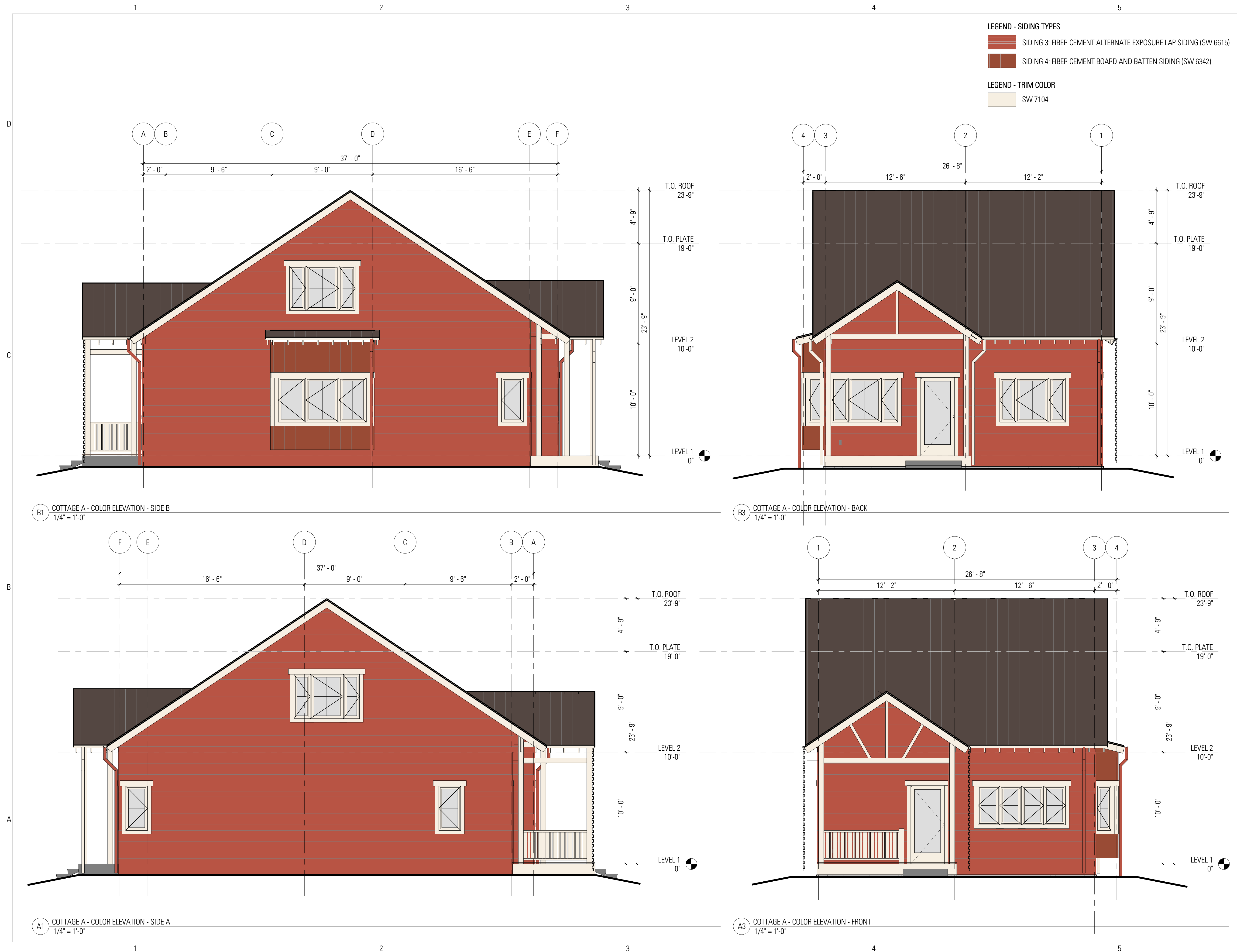
NOT FOR CONSTRUCTION

Architect Project No: 1819  
Author:  
Checker:

**COTTAGE A - EXTERIOR  
ELEVATIONS - COLOR**

# A201-A2

Copyright Schemata Workshop, Inc.

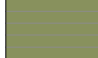




## SUNNYSIDE VILLAGE

3121 66th Ave NE  
Marysville, WA 98270

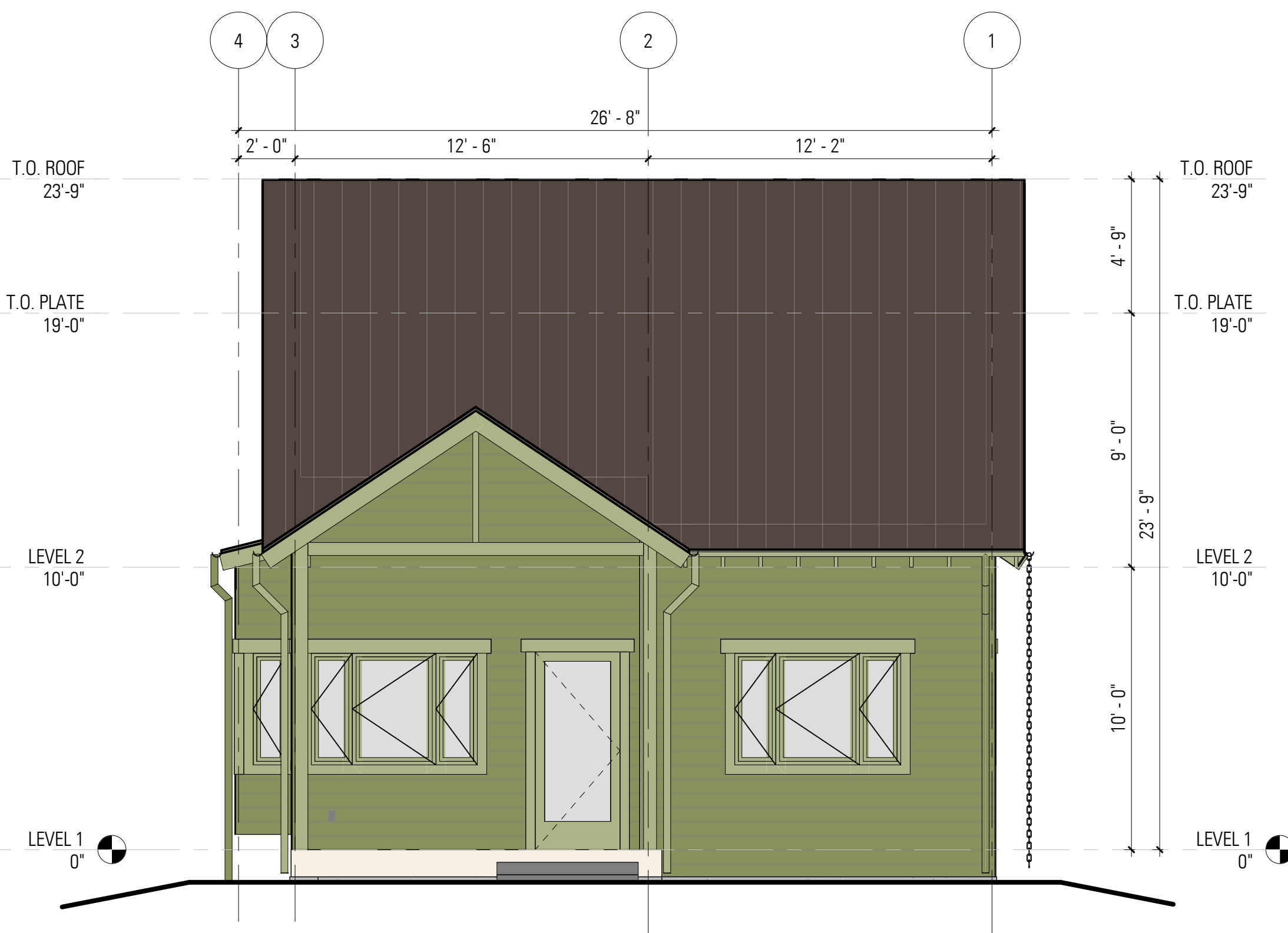
9/05/2022 CD  
COORDINATION SET

NO.	DATE	DESCRIPTION
-----	------	-------------

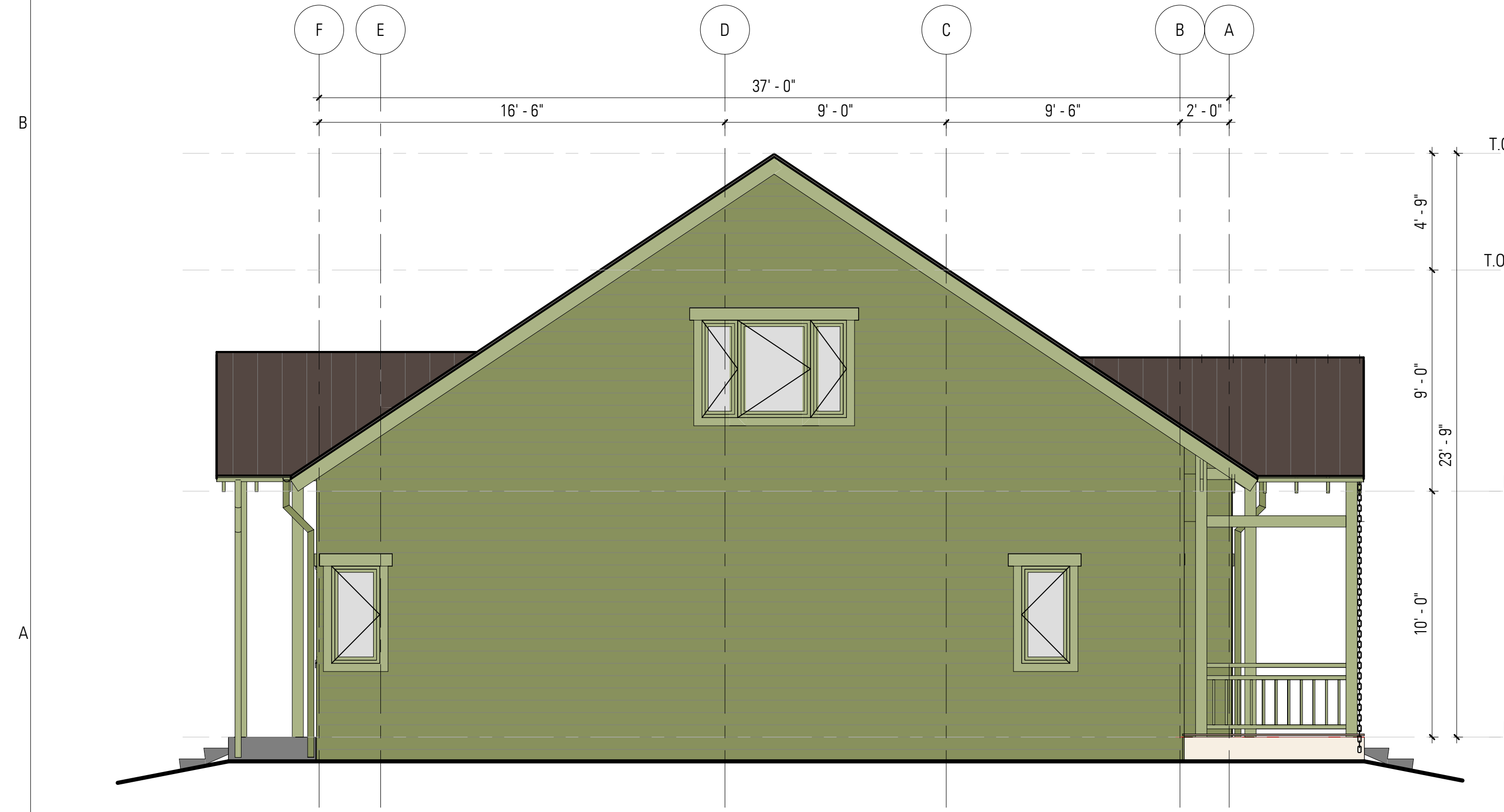
- LEGEND - SIDING TYPES**
-  SIDING 2: FIBER CEMENT LAP SIDING (SW 6431)
  -  SIDING 4: FIBER CEMENT BOARD AND BATTEN SIDING (SW 6431)
- LEGEND - TRIM COLOR**
-  SW 6430



B1 COTTAGE B - COLOR ELEVATION - SIDE B  
1/4" = 1'-0"



B3 COTTAGE B - COLOR ELEVATION - BACK  
1/4" = 1'-0"



A1 COTTAGE B - COLOR ELEVATION - SIDE A  
1/4" = 1'-0"



A3 COTTAGE B - COLOR ELEVATION - FRONT  
1/4" = 1'-0"

NOT FOR CONSTRUCTION

Architect Project No: 1819  
Author:  
Checker:

COTTAGE B - EXTERIOR  
ELEVATIONS - COLOR

# A201-B2

## SUNNYSIDE VILLAGE

3121 66th Ave NE  
Marysville, WA 98270

9/05/2022 CD  
COORDINATION SET

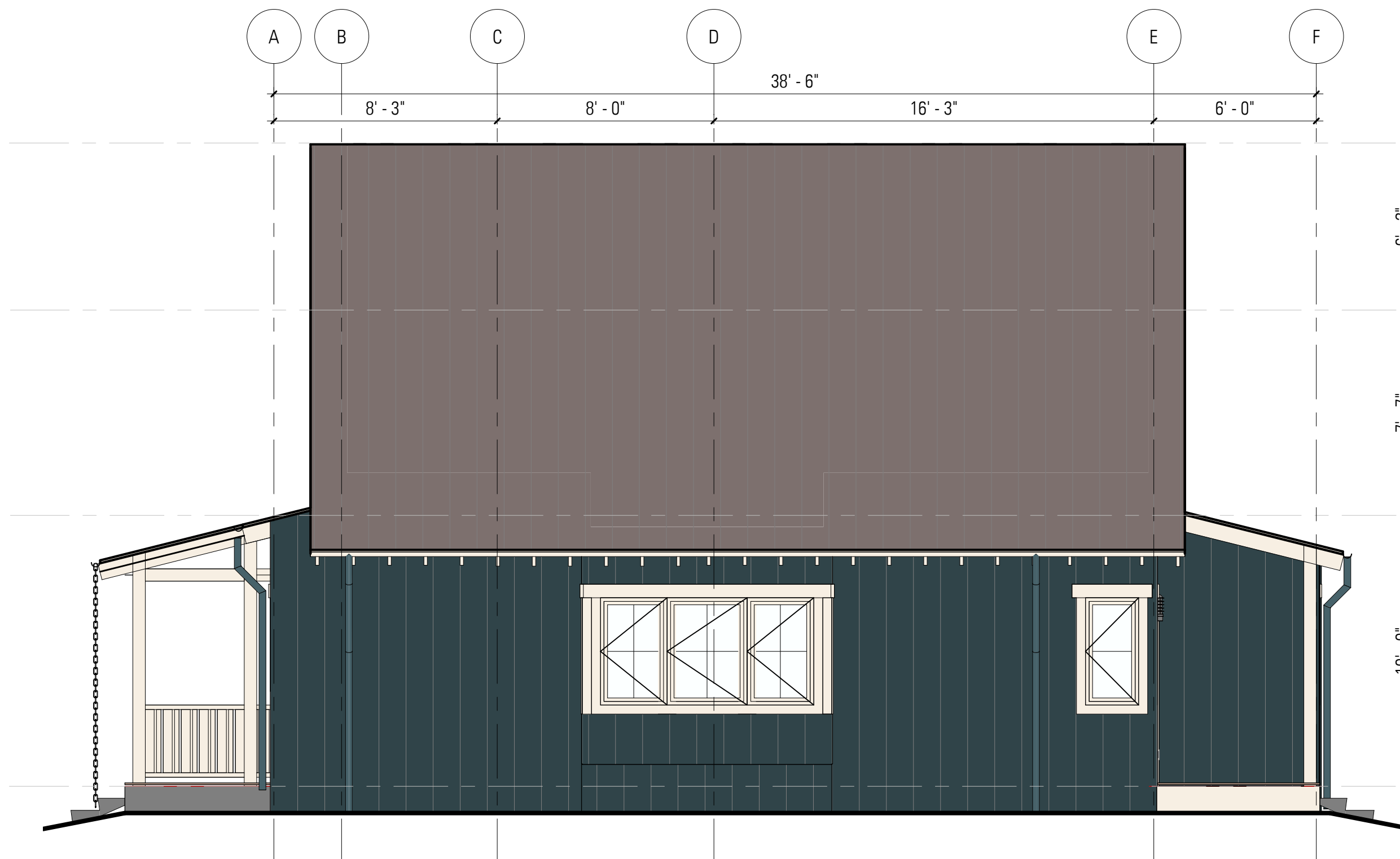
NO.	DATE	DESCRIPTION

**LEGEND - SIDING TYPES**

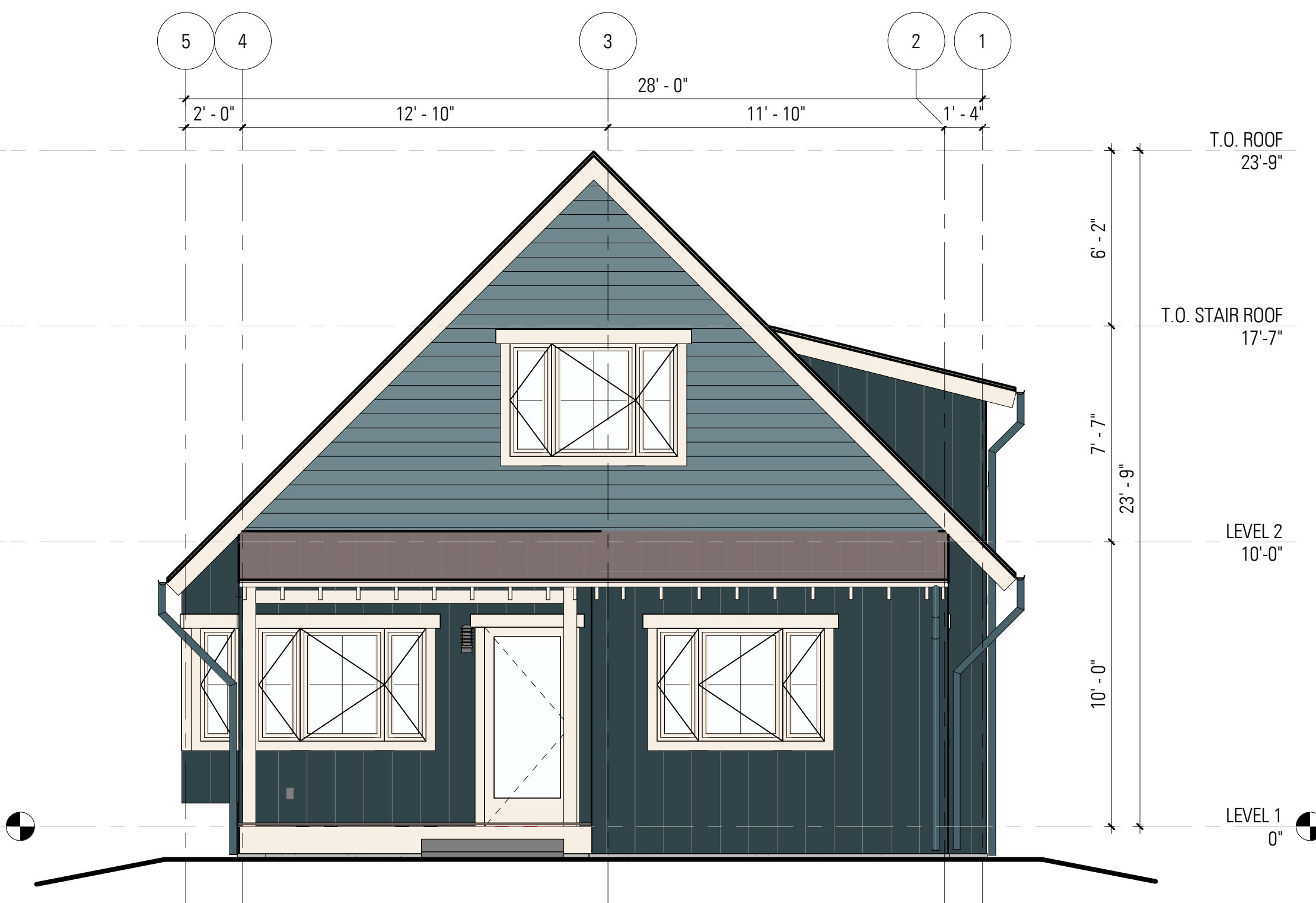
- SIDING 2: FIBER CEMENT LAP SIDING (SW 6221)
- SIDING 4: FIBER CEMENT BOARD AND BATTEN SIDING (SW 6229)

**LEGEND - TRIM COLOR**

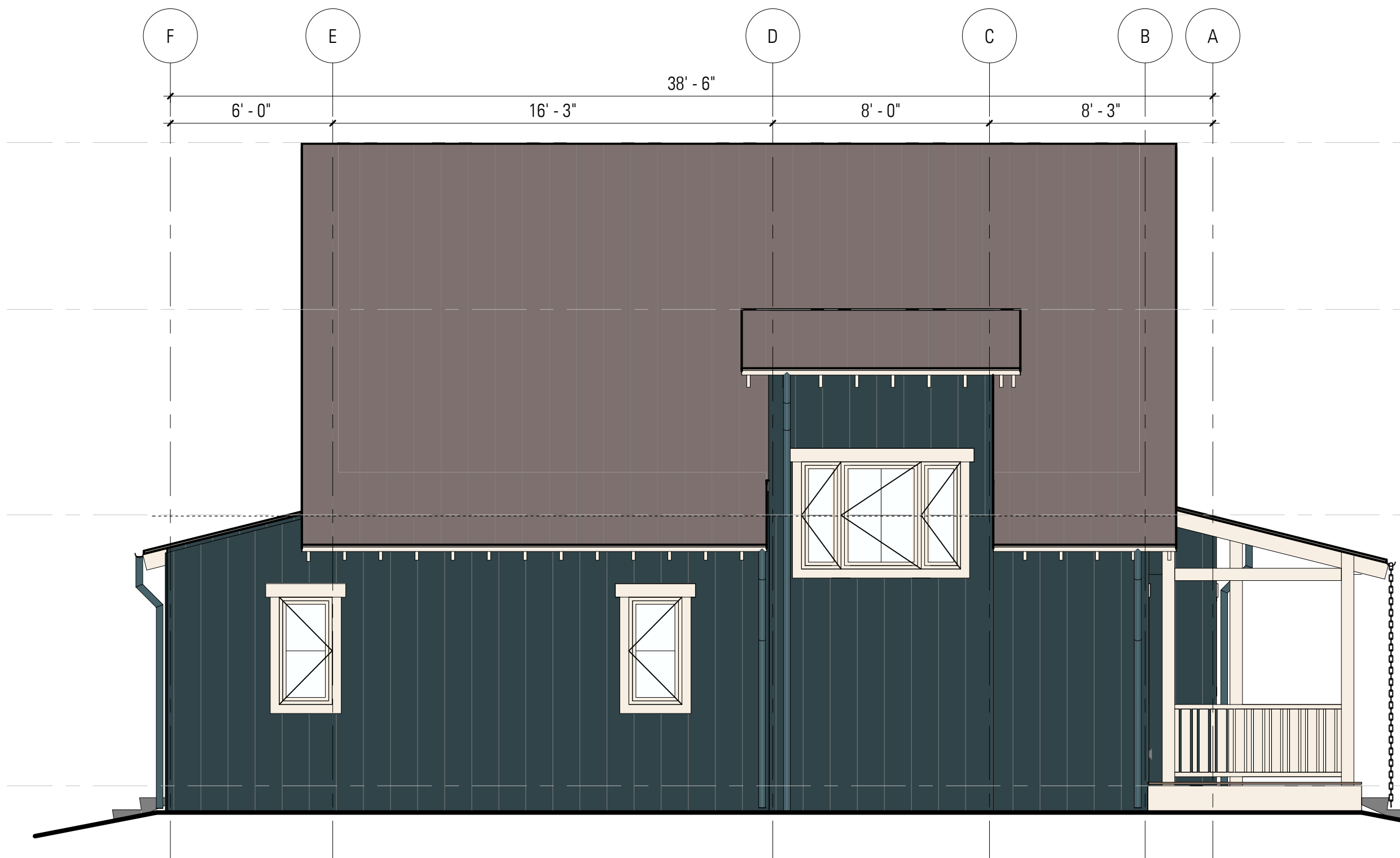
- SW 7104



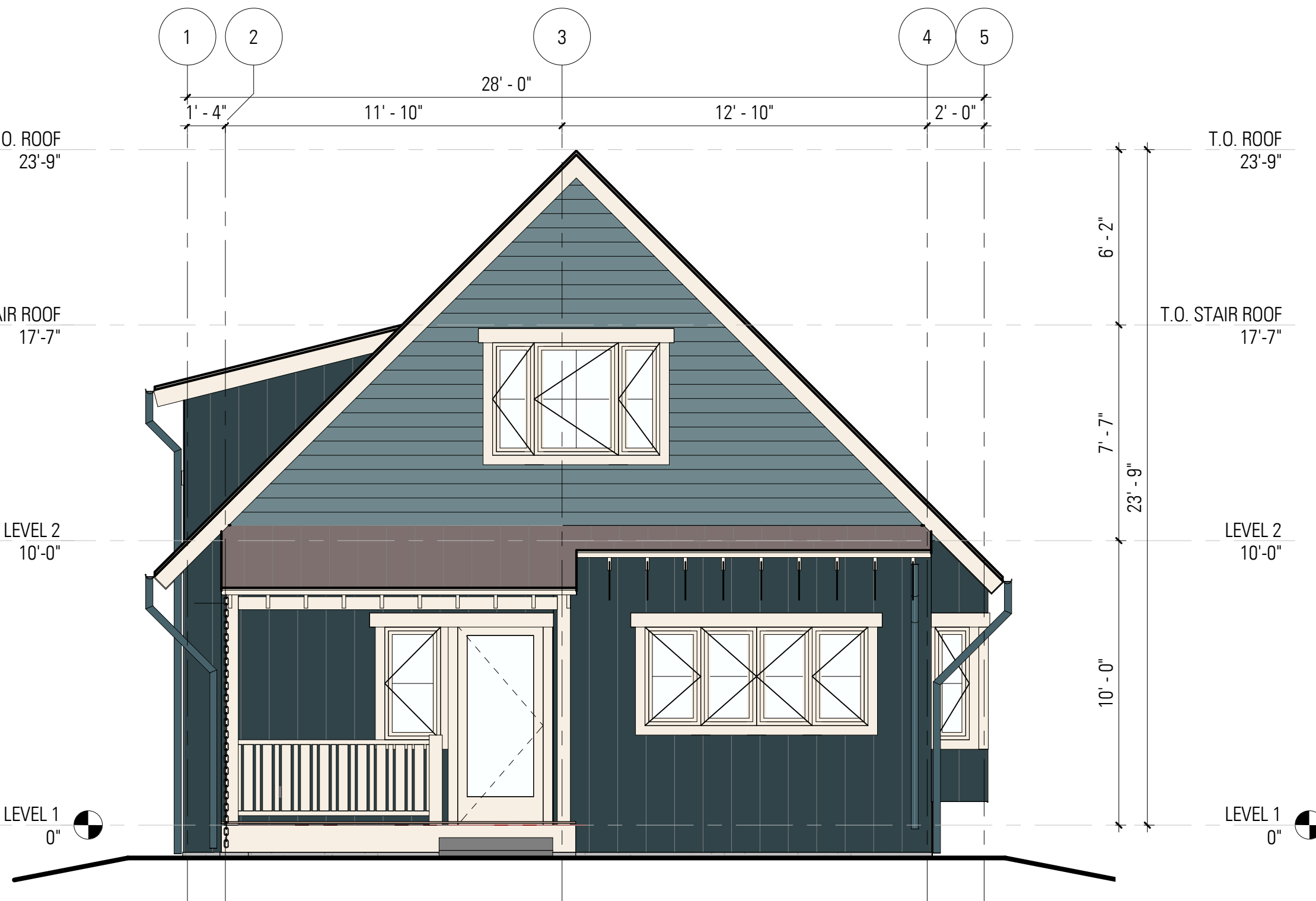
B1 COTTAGE C - COLOR ELEVATION - SIDE B  
1/4" = 1'-0"



B3 COTTAGE C - COLOR ELEVATION - BACK  
1/4" = 1'-0"



A1 COTTAGE C - COLOR ELEVATION - SIDE A  
1/4" = 1'-0"



A3 COTTAGE C - COLOR ELEVATION - FRONT  
1/4" = 1'-0"

NOT FOR CONSTRUCTION

Architect Project No: 1819  
Author:  
Checker:

COTTAGE C - EXTERIOR  
ELEVATIONS - COLOR

# A201-C2

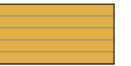
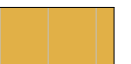



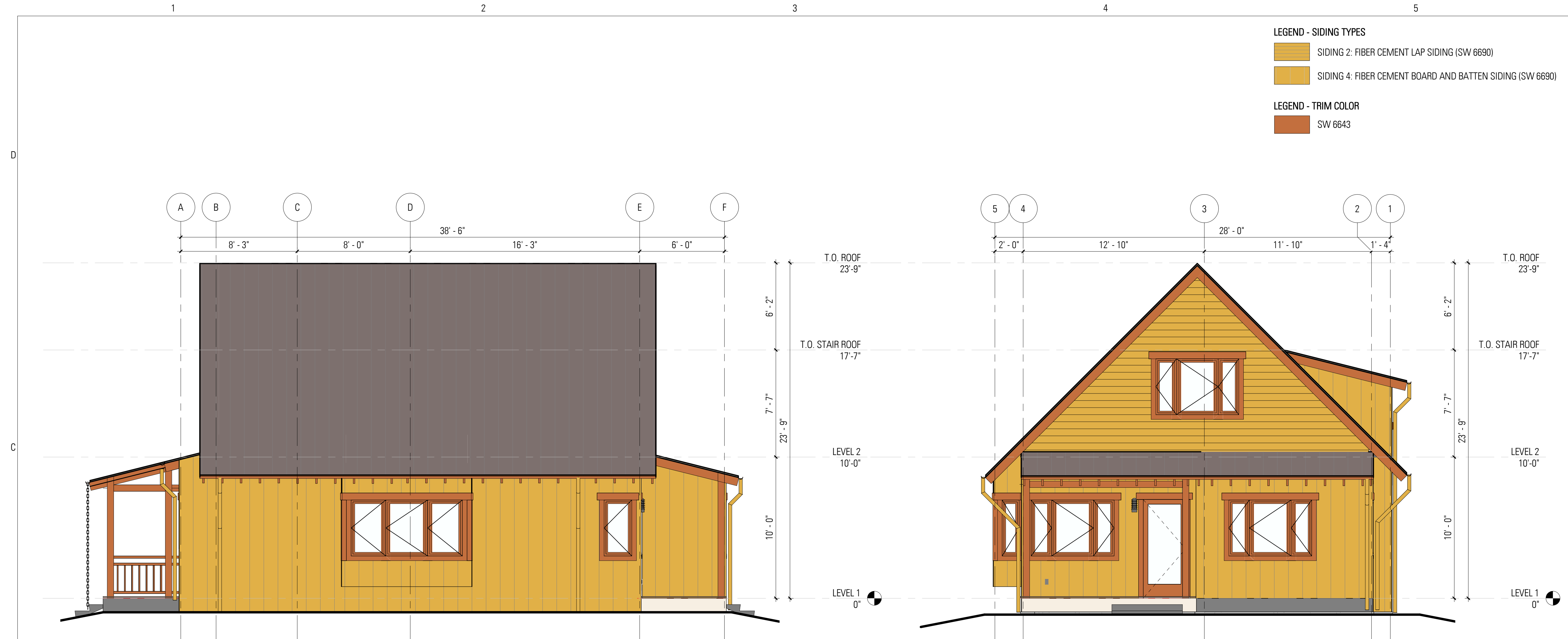
## SUNNYSIDE VILLAGE

3121 66th Ave NE  
Marysville, WA 98270

9/05/2022 CD  
COORDINATION SET

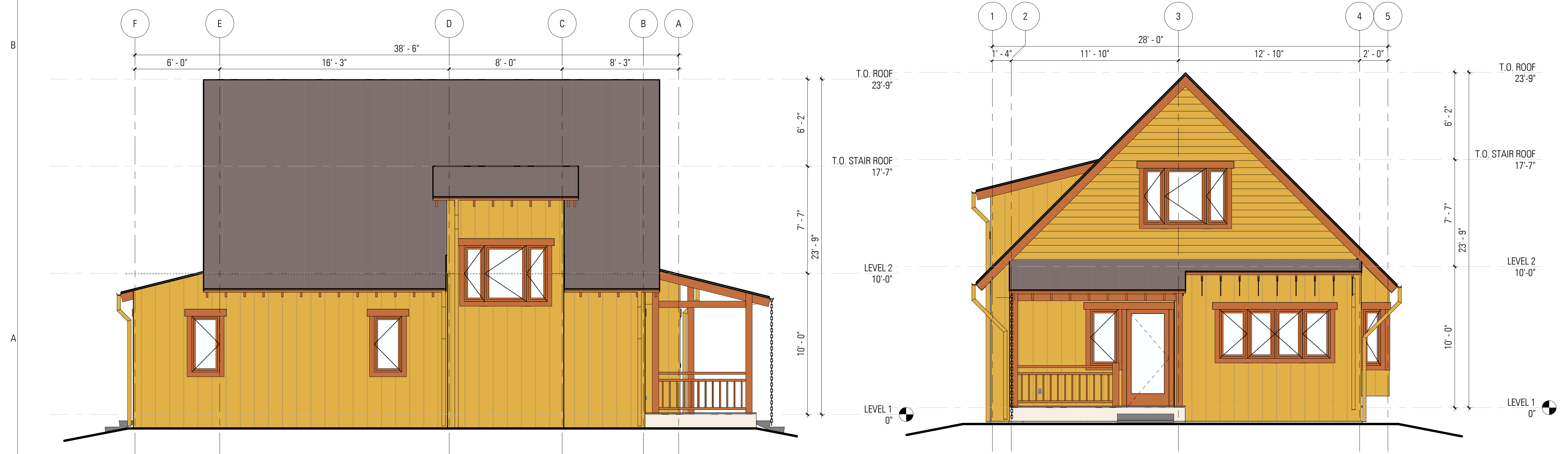
NO.	DATE	DESCRIPTION

- LEGEND - SIDING TYPES**
-  SIDING 2: FIBER CEMENT LAP SIDING (SW 6690)
  -  SIDING 4: FIBER CEMENT BOARD AND BATTEN SIDING (SW 6690)
- LEGEND - TRIM COLOR**
-  SW 6643



B1 COTTAGE D - COLOR ELEVATION - SIDE B  
1/4" = 1'-0"

B3 COTTAGE D - COLOR ELEVATION - BACK  
1/4" = 1'-0"



A1 COTTAGE D - COLOR ELEVATION - SIDE A  
1/4" = 1'-0"

A3 COTTAGE D - COLOR ELEVATION - FRONT  
1/4" = 1'-0"

NOT FOR CONSTRUCTION

Architect Project No: 1819  
Author:  
Checker:

COTTAGE D - EXTERIOR  
ELEVATIONS - COLOR

# A201-D2

architect  
**Schemata Workshop, Inc.**  
 1720 12th Avenue  
 Seattle, WA 98122

CONTACT: Grace Kim, AIA  
 v (206) 285.1589  
 e grace@schemataworkshop.com

owner  
**King Creek LLC**  
 2720 Hoyt Ave, Apt 119  
 Everett, WA 98201

CONTACT: Sherie Rzczkowski  
 e sherierenee@gmail.com  
 v (360) 510.3959

## SUNNYSIDE VILLAGE

3121 66th Ave NE  
 Marysville, WA 98270

9/05/2022 CD  
 COORDINATION SET

NO.	DATE	DESCRIPTION
-----	------	-------------

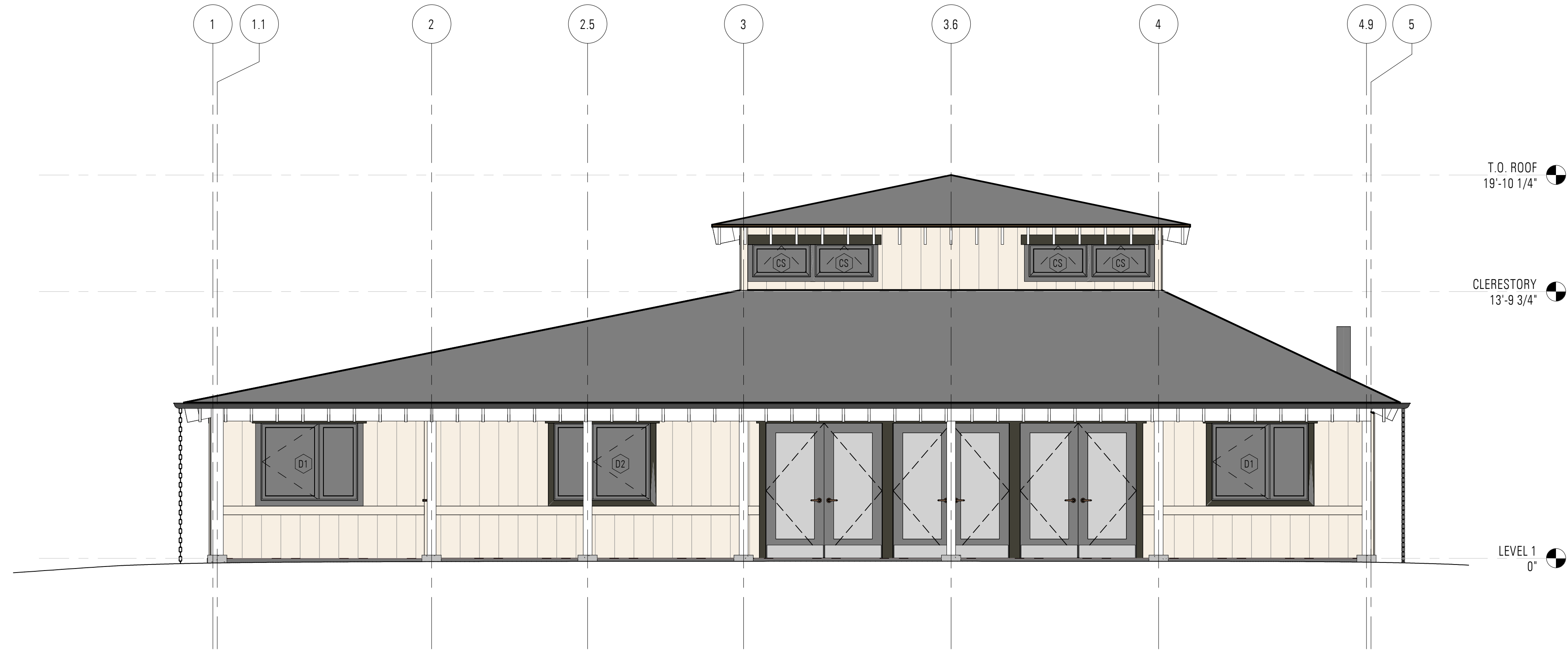
NOT FOR CONSTRUCTION

Architect Project No: 1819  
 Author:  
 Checker:

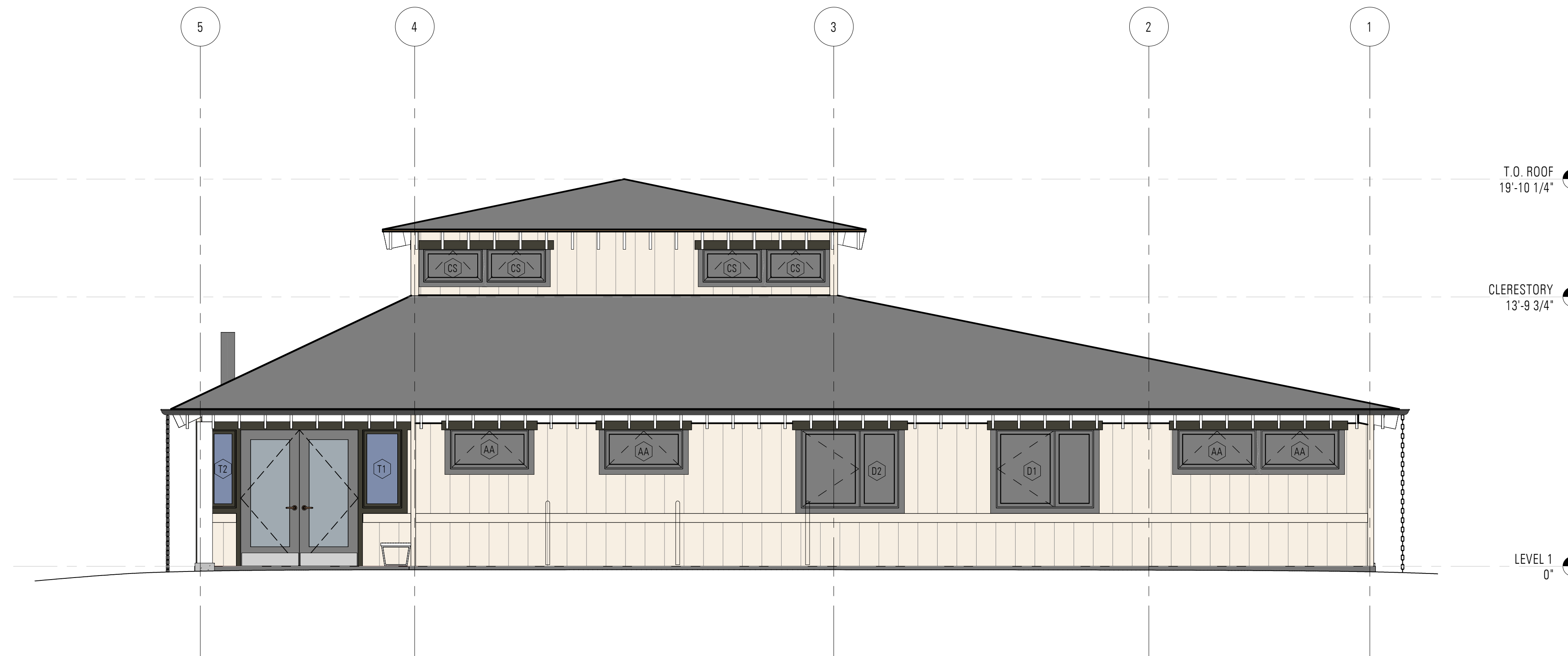
**COMMON HOUSE -  
EXTERIOR ELEVATIONS  
- COLOR**

# A201-E3

Copyright Schemata Workshop, Inc.



B1 COMMON HOUSE - COLOR ELEVATION - SOUTH  
 1/4" = 1'-0"



A1 COMMON HOUSE - COLOR ELEVATION - NORTH  
 1/4" = 1'-0"

architect  
Schemata Workshop, Inc.  
1720 12th Avenue  
Seattle, WA 98122

CONTACT: Grace Kim, AIA  
v (206) 285.1589  
e grace@schemataworkshop.com

owner  
King Creek LLC  
2720 Hoyt Ave, Apt 119  
Everett, WA 98201

CONTACT: Sherie Rzczkowski  
e sherierenee@gmail.com  
v (360) 510.3959

## SUNNYSIDE VILLAGE

3121 66th Ave NE  
Marysville, WA 98270

9/05/2022 CD  
COORDINATION SET

NO.	DATE	DESCRIPTION
-----	------	-------------

NOT FOR CONSTRUCTION

Architect Project No: 1819  
Author:  
Checker:

COMMON HOUSE -  
EXTERIOR ELEVATIONS  
- COLOR

# A201-E4

Copyright Schemata Workshop, Inc.

