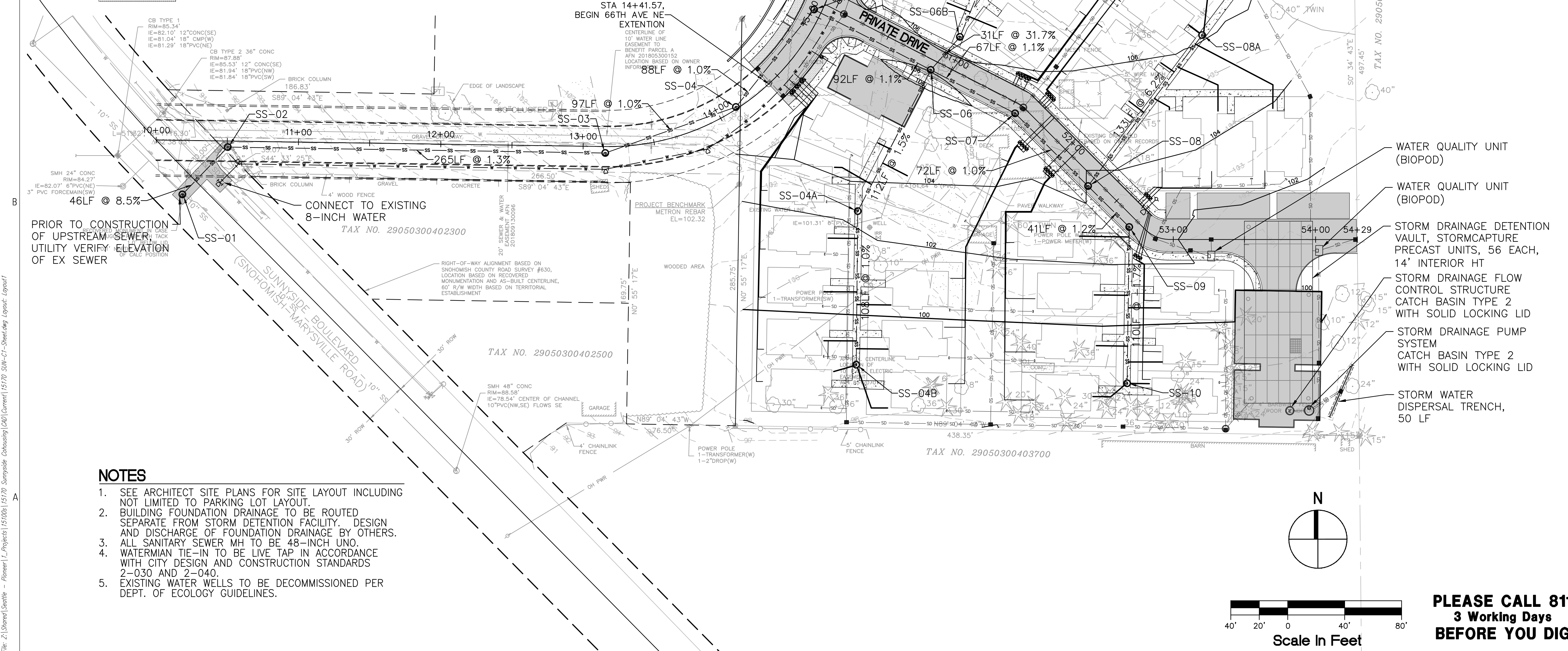


LEGEND

- — — — — CONSTRUCTION CENTERLINE
- - - - - PROPERTY/ROW LINE, SEE ARCH DRAWINGS
- → → → → STORM DRAINAGE CONVEYANCE SWALE
- — — — — STORM DRAIN MAIN
- CATCH BASIN, TYPE 1
- CATCH BASIN, TYPE 2
- STORM DRAIN CLEANOUT
- DOWNSPOUT
- DOWNSPOUT WITH SPLASH BLOCK
- — — — — WATER MAIN, 8" D.I.
- — — — — WATER SERVICE LINE
- ◆ FIRE HYDRANT
- ⊕ FIRE DEPARTMENT CONNECTION
- POST INDICATOR VALVE
- WATER METER
- ⊕ WATER VALVE
- ⊕ WATER LINE FITTING
- — — — — SANITARY SEWER MAIN
- — — — — SANITARY SEWER SERVICE
- SANITARY SEWER MANHOLE
- SANITARY SEWER CLEANOUT
- HMA PAVEMENT
- CONCRETE SIDEWALK
- CURB AND GUTTER
- PUBLIC ROAD LANDSCAPE

SANITARY SEWER STRUCTURE TABLE					
ID ##-##	STATION	OFFSET	RIM	IE	NOTES
SS-01	10+18.99	37.98' R	87.8±	79.6 8" IN 79.4± EX 10" IN 79.4± EX 10" OUT	48" SSMH TYPE 1
SS-02	10+50.41	4.26' R	90.1±	83.6 8" IN 83.5 8" OUT	48" SSMH TYPE 3
SS-03	13+15.60	4.54' R	102.3±	87.2 8" IN 87.1 8" OUT	48" SSMH TYPE 1
SS-04	14+13.26	1.39' L	104.1±	88.3 8" IN 88.2 8" OUT	48" SSMH TYPE 1
SS-04A	14+32.55	108.51' R	102.6±	92.2 8" IN 92.1 8" OUT	48" SSMH TYPE 1
SS-04B	52+02.64	211.00' R	99.3±	93.3 8" OUT	48" SSMH TYPE 3
SS-05	15+03.99	5.37' L	105.4±	89.3 8" IN 89.2 8" OUT	48" SSMH TYPE 1
SS-06	50+87.26	7.09' R	106.0±	90.4 8" IN 90.4 8" IN 90.3 8" OUT	48" SSMH TYPE 1
SS-06A	50+86.20	131.32' L	109.7±	103.7 8" OUT	48" SSMH TYPE 3
SS-06B	50+94.87	22.92' L	106.3±	100.3 8" IN 100.2 8" OUT	48" SSMH TYPE 3
SS-07	51+55.03	7.00' R	105.4±	91.2 8" IN 91.1 8" OUT	48" SSMH TYPE 1
SS-08	52+28.52	6.98' R	104.0±	92.0 8" IN 92.0 8" IN 91.9 8" OUT	48" SSMH TYPE 1
SS-08A	52+09.77	124.73' L	106.1±	100.2 8" OUT	48" SSMH TYPE 3
SS-09	52+69.32	6.75' R	103.1±	95.6 8" IN 92.5 8" OUT	48" SSMH TYPE 1
SS-10	52+91.84	104.64' R	99.7±	93.7 8" OUT	48" SSMH TYPE 3



NOTES

- SEE ARCHITECT SITE PLANS FOR SITE LAYOUT INCLUDING NOT LIMITED TO PARKING LOT LAYOUT.
- BUILDING FOUNDATION DRAINAGE TO BE ROUTED SEPARATE FROM STORM DETENTION FACILITY. DESIGN AND DISCHARGE OF FOUNDATION DRAINAGE BY OTHERS.
- ALL SANITARY SEWER MH TO BE 48-INCH UNO.
- WATERMAIN TIE-IN TO BE LIVE TAP IN ACCORDANCE WITH CITY DESIGN AND CONSTRUCTION STANDARDS 2-030 AND 2-040.
- EXISTING WATER WELLS TO BE DECOMMISSIONED PER DEPT. OF ECOLOGY GUIDELINES.



119 PINE ST. SUITE 400
SEATTLE, WA 98101
T 206.223.0326
www.migcom.com

architect
Schemata Workshop, Inc.
1720 12th Avenue
Seattle, WA 98122

CONTACT: Grace Kim, AIA
v (206) 285.1589
e grace@schemataworkshop.com

owner
King Creek LLC
2720 Hoyt Ave, Apt 119
Everett, WA 98201

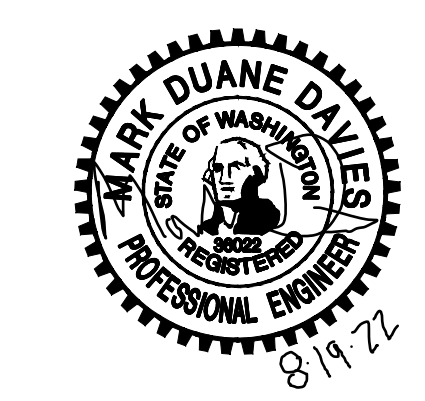
CONTACT: Sherie Rzeczkowski
e sherierenee@gmail.com
v (360) 510.3959

SUNNYSIDE VILLAGE

3121 66th Ave NE
Marysville, WA 98270

LUA Submittal
August 19, 2022

NO.	DATE	DESCRIPTION



NOT FOR CONSTRUCTION

Architect Project No: 1819
Author:
Checker:

CIVIL SITE PLAN

C-1

**PLEASE CALL 811
3 Working Days
BEFORE YOU DIG**