

# E SUNNYSIDE PRD PRELIMINARY PLAT

### LEGEND AND ABBREVIATIONS

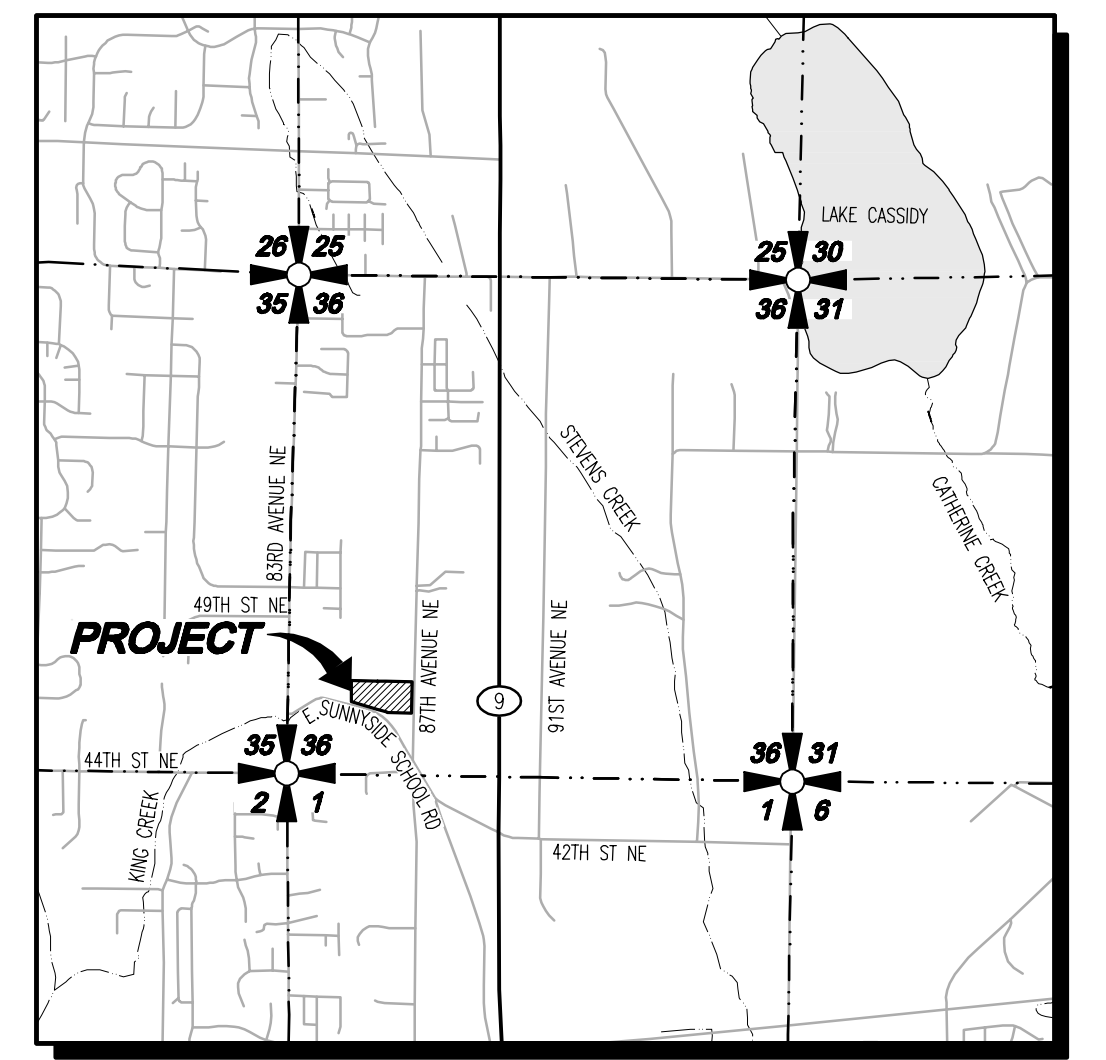
EXISTING SYMBOLS		ABBREVIATIONS	
SYMBOL	DESCRIPTION	CB	DESCRIPTION
⊕	FOUND CONCRETE MONUMENT AS NOTED	CL	CATCH BASIN
⊙	FOUND REBAR W/ CAP AS NOTED	CL	CENTERLINE
○	SET REBAR W/ CAP	CMP	CORRUGATED METAL PIPE
□	CATCH BASIN	CP	CONCRETE PIPE
⊕	WATER METER	EL	ELEVATION
⊕	WATER VALVE	EXIST.	EXISTING
⊕	FIRE HYDRANT	FL	FLOWLINE
⊕	SEWER MANHOLE	IE	INVERT ELEVATION
⊕	POWER POLE	LCPE	LINE CORRUGATED POLYETHYLENE
⊕	GUY ANCHOR	PL	PROPERTY LINE
⊕	CONIFEROUS TREE	PP	POWER POLE
⊕	DECIDUOUS TREE	PVC	POLYVINYL CHLORIDE PIPE
		R/W	RIGHT-OF-WAY
		STA	STATION
		SD	STORM DRAIN
		SS	SANITARY SEWER
		SSMH	SANITARY SEWER MANHOLE
		SWPE	SOLID WALL POLYETHYLENE PIPE
		TYP	TYPICAL
		TBR	TO BE REMOVED

PROPOSED STORM SYMBOLS		PROPOSED WATER SYMBOLS	
SYMBOL	DESCRIPTION	SYMBOL	DESCRIPTION
⊕	SD CAP	⊕	WATER CAP
⊕	TYPE 1 CATCH BASIN, GRATED LID	⊕	CONCRETE BLOCKING
⊕	TYPE 1 CATCH BASIN, SOLID LID	⊕	BUTTERFLY VALVE
⊕	TYPE 2 CATCH BASIN, GRATED LID	⊕	11' BEND
⊕	TYPE 2 CATCH BASIN, SOLID LID	⊕	45' BEND
⊕	BEEHIVE MANHOLE COVER	⊕	90' BEND
⊕	SQUARE YARD DRAIN	⊕	22' BEND
⊕	ROUND YARD DRAIN	⊕	VALVE
⊕	STORM CLEAN OUT	⊕	HYDRANT ASSEMBLY
⊕	STORM PIPE	⊕	BLOW-OFF VALVE
		⊕	REDUCER
		⊕	AIR-VAC ASSEMBLY
		⊕	WATER METER
		⊕	WATER PIPE

PROPOSED SEWER SYMBOLS	
SYMBOL	DESCRIPTION
⊕	SEWER CAP
⊕	SEWER CLEANOUT
⊕	SEWER MANHOLE
⊕	SEWER PIPE



VICINITY MAP  
SCALE: 1"=2000'

### SURVEY INFORMATION

#### LEGAL DESCRIPTION

**PARCEL A:**  
ALL THAT PORTION OF TRACT 162, SUNNYSIDE FIVE ACRE TRACTS, ACCORDING TO PLAT THEREOF, RECORDED IN VOLUME 7 OF PLATS, PAGE 19, RECORDS OF SNOHOMISH COUNTY, WASHINGTON, DESCRIBED AS FOLLOWS:  
BEGINNING AT THE NORTHEAST CORNER OF SAID TRACT 162;  
THENCE WEST ALONG THE NORTH LINE THEREOF 360 FEET;  
THENCE SOUTH PARALLEL TO THE EAST LINE OF SAID TRACT 162 TO THE SOUTH LINE OF SAID TRACT;  
THENCE ALONG SAID SOUTH LINE TO THE SOUTHWEST CORNER OF SAID TRACT 162;  
THENCE NORTH ALONG THE EAST LINE OF SAID TRACT 162 TO THE POINT OF BEGINNING.

**PARCEL B:**  
TRACT 162 OF SUNNYSIDE FIVE ACRE TRACTS, AS PER PLAT RECORDED IN VOLUME 7 OF PLATS ON PAGE 19, RECORDS OF SNOHOMISH COUNTY;  
EXCEPT THE EAST 360 FEET AS MEASURED ALONG THE NORTH LINE AND PARALLEL TO THE EAST LINE.

BOTH SITUATE IN THE COUNTY OF SNOHOMISH, STATE OF WASHINGTON.

#### HORIZONTAL DATUM

NAD 83/2011  
WASHINGTON STATE COORDINATES-NORTH ZONE

#### VERTICAL DATUM

NAD 83/91  
WASHINGTON STATE COORDINATES-NORTH ZONE

#### BASIS OF BEARING

NAD83/91 FROM GPS OBSERVATION  
MONUMENTED WEST LINE OF THE SW QUARTER OF SECTION 36  
(BEARING = N 0°56'25" E)

#### BENCHMARK

**BENCHMARK**  
WCS SURVEY DATA WAREHOUSE MONUMENT NO. 3005X21  
FOUND 4"x4" CONCRETE MONUMENT WITH TACK IN LEAD AT THE WEST QUARTER CORNER OF SEC. 36, TOWNSHIP 30 N, RANGE 5 E  
PUBLISHED ELEVATION = 388.27 FEET (NAVD88)

#### REFERENCES

- (R1) RECORD OF SURVEY (AFN. 200812305012)
- (R2) RECORD OF SURVEY (AFN. 200804295049)
- (R3) BOUNDARY LINE ADJUSTMENT (AFN. 20010110472)
- (R4) RECORD OF SURVEY (AFN. 9701095004)
- (R5) BOUNDARY LINE ADJUSTMENT (AFN. 8709160386)
- (R6) SNOHOMISH COUNTY ENGINEERS OFFICE EAST SUNNYSIDE SCHOOL RD SURVEY NO.1168
- (R7) PLAT OF SUNNY SIDE FIVE ACRE TRACTS (AFN. 122901)
- (R8) PLAT OF THE RIDGE (AFN. 201904295009)

### CONTACT LIST

<b>DEVELOPER/OWNER:</b> NATURAL 9 HOLDINGS, LLC 10515 20TH STREET SE, SUITE 202 LAKE STEVENS, WASHINGTON 98258 CONTACT: RYAN LARSEN PHONE: (360) 631-1820 EMAIL: rlarsen@landprogrp.com	<b>SURVEYOR:</b> LDC, INC. 20210 142ND AVE NE WOODINVILLE, WASHINGTON 98072 CONTACT: VINCE TOWNSEND, PLS PHONE: (425) 806-1869 FAX: (425) 482-2893 EMAIL: vtownsend@ldccorp.com
<b>CIVIL ENGINEER:</b> LDC, INC. 20210 142ND AVENUE NE WOODINVILLE, WASHINGTON 98072 CONTACT: JESSE JARRELL, PE PHONE: (425) 806-1869 FAX: (425) 482-2893 EMAIL: jjarrell@ldccorp.com	<b>GEOTECHNICAL ENGINEER:</b> COBALT GEOSCIENCES, LLC PO BOX 82243 KENMORE, WASHINGTON 98028 CONTACT: PHIL HABERMAN PHONE: (206) 331-1079 EMAIL: phil@cobaltgeo.com
<b>WETLAND BIOLOGIST:</b> WETLAND RESOURCES, INC 19TH AVENUE SE, SUITE 106 EVERETT, WASHINGTON 98208 CONTACT: JOHN LAUFENBERG PHONE: (425) 337-3174 EMAIL: john@wetlandresources.com	

### PROJECT INFORMATION

TAX PARCELS:	00590700016202, 00590700016201
SITE ADDRESS:	4614 87TH AVENUE NE MARYSVILLE, WA 98270
TOTAL SITE AREA:	186,679 SF (4.29 AC)
ROW DEDICATION:	34,209 SF (0.79 AC)
NET SITE AREA:	152,470 SF (3.50 AC)
PROPOSED DENSITY:	8 UNITS/ACRE = 28 UNITS
EXISTING ZONING:	WR-R-4-B WRSFH
PROPOSED LAND USE:	SINGLE FAMILY
PROPOSED LOTS:	28
LOTS ACCESSED FROM PRIVATE ROAD:	9 (32.1% OF TOTAL LOTS)
MIN OPEN SPACE:	22,871 SF (15% OF NET)
OPEN SPACE DESIGNED:	29,843 SF
MAX BUILDING HEIGHT:	30'
BUILDING SETBACKS:	
FRONT:	10' (20' FOR GARAGES)
SIDE:	5'
REAR:	10'
WATER:	CITY OF MARYSVILLE
SEWER:	CITY OF MARYSVILLE
POWER:	SNOHOMISH COUNTY PUD NO. 1
GAS:	PUGET SOUND ENERGY
TELEPHONE:	FRONTIER
CABLE:	COMCAST
SCHOOL DISTRICT:	LAKE STEVENS SCHOOL DISTRICT NO. 5
FIRE DISTRICT:	MARYSVILLE FIRE DISTRICT RFA

### TABLE OF CONTENTS

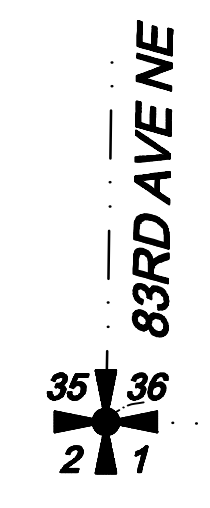
- 1 COVER SHEET
- 2 PRELIMINARY PLAT
- L1-L5 LANDSCAPE PLAN

### EARTHWORK QUANTITIES

CUT:	6,000 CY
FILL:	14,000 CY
NET:	8,000 CY (FILL)
DISTURBED AREA:	192,400 SF (4.42 AC)

### PARKING INFORMATION

REQUIRED PARKING SPACES:	3 PER LOT- 84 SPACES
PROVIDED PARKING SPACES:	4 PER LOT- 112 SPACES



### UTILITY NOTE

THE CONTRACTOR SHALL VERIFY THE LOCATION OF ALL EXISTING UTILITIES PRIOR TO ANY CONSTRUCTION. AGENCIES INVOLVED SHALL BE NOTIFIED WITHIN A REASONABLE TIME PRIOR TO THE START OF CONSTRUCTION.

### DISCLAIMER

THE TOPOGRAPHIC SURVEY WAS PERFORMED BY LDC, INC. IN NOVEMBER 2021. ANY CHANGES TO THE SITE AFTER THIS DATE WILL NOT BE REFLECTED IN THE PLANS. ANY DISCREPANCIES FOUND BETWEEN WHAT IS SHOWN ON THE PLANS AND WHAT IS NOTED IN THE FIELD SHOULD BE BROUGHT IMMEDIATELY TO THE ATTENTION OF THE ENGINEER.

Call 2 Business Days Before You Dig  
**811 or 1-800-424-5555**  
Utilities Underground Location Center

NO.	DATE	DESCRIPTION

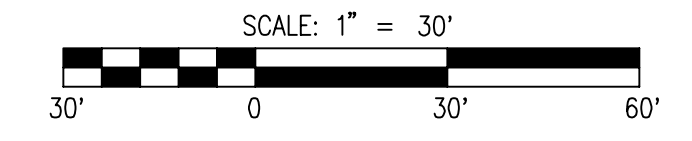
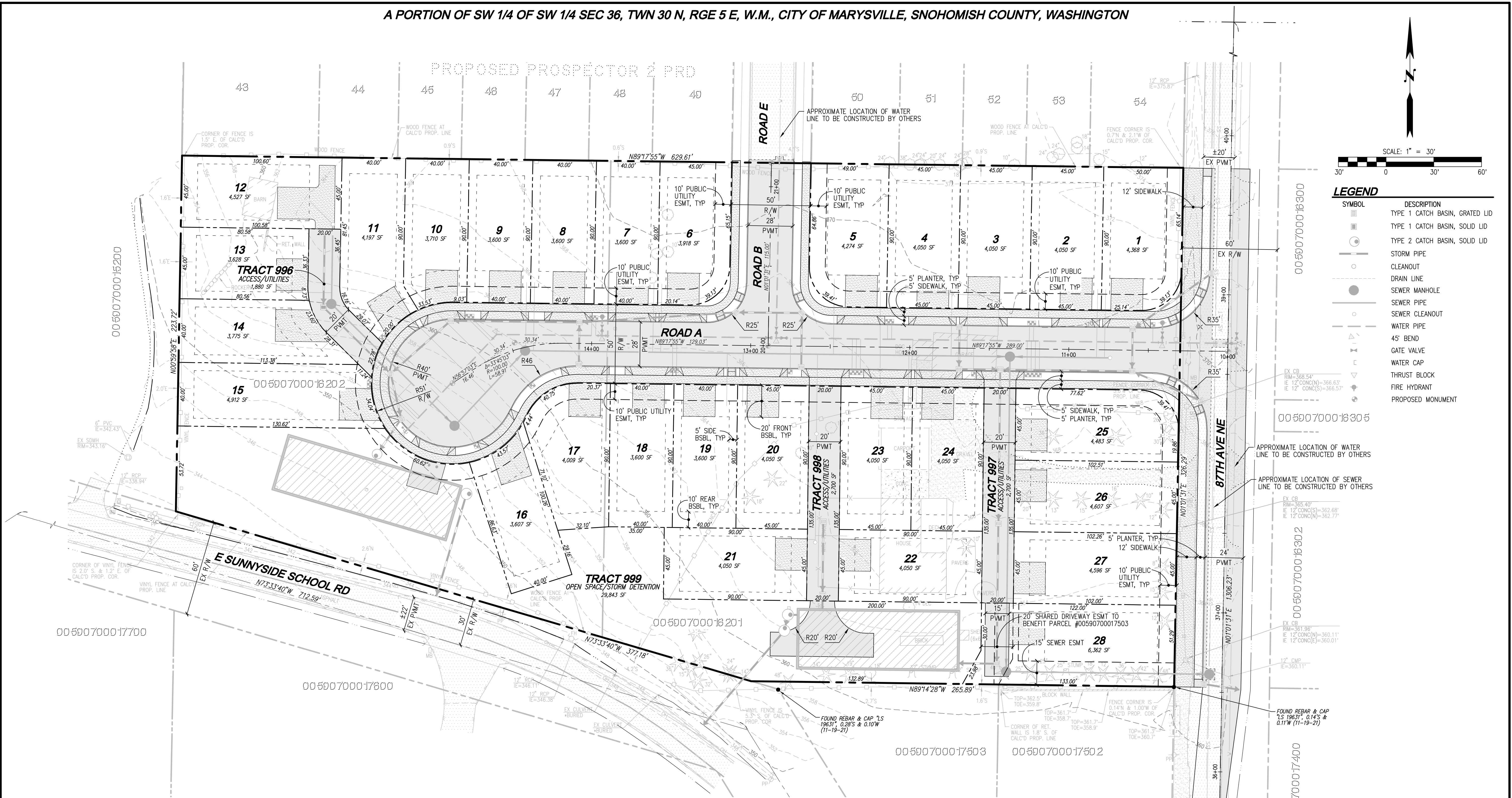
  

**LDC** | Surveying Engineering Planning  
Kent | Woodinville | Olympia  
20210 142nd Avenue NE | Woodinville, WA 98072 | www.LDCcorp.com  
T 425.806.1869 | F 425.482.2893

**NATURAL 9 HOLDINGS, LLC**  
**E SUNNYSIDE PRD**  
COVER SHEET

**CS-01**  
SHEET 1 OF 2

A PORTION OF SW 1/4 OF SW 1/4 SEC 36, TWN 30 N, RGE 5 E, W.M., CITY OF MARYSVILLE, SNOHOMISH COUNTY, WASHINGTON



**LEGEND**

SYMBOL	DESCRIPTION
[Symbol]	TYPE 1 CATCH BASIN, GRATED LID
[Symbol]	TYPE 1 CATCH BASIN, SOLID LID
[Symbol]	TYPE 2 CATCH BASIN, SOLID LID
[Symbol]	STORM PIPE
[Symbol]	CLEANOUT
[Symbol]	DRAIN LINE
[Symbol]	SEWER MANHOLE
[Symbol]	SEWER PIPE
[Symbol]	SEWER CLEANOUT
[Symbol]	WATER PIPE
[Symbol]	45° BEND
[Symbol]	GATE VALVE
[Symbol]	WATER CAP
[Symbol]	THRUST BLOCK
[Symbol]	FIRE HYDRANT
[Symbol]	PROPOSED MONUMENT

**REVISIONS**

NO.	DATE	DESCRIPTION

**LDC**  
 Surveying  
 Engineering  
 Planning  
 Kent  
 Olympia  
 Woodinville  
 20210 142nd Avenue NE  
 Woodinville, WA 98072  
 www.LDCcorp.com  
 T 425.806.1869 F 425.482.2893

**NATURAL 9 HOLDINGS, LLC**  
**E SUNNYSIDE PRD**  
 PRELIMINARY PLAT

**WESSE A. JARRELL**  
 PROFESSIONAL ENGINEER  
 No. 14884  
 State of Washington  
 JOB NUMBER: C21-202  
 DRAWING NAME: C21202PP-PP-PL  
 DESIGNER: JAG  
 DRAFTING BY: JDG  
 DATE: 7-25-22  
 SCALE: 1"=30'  
 JURISDICTION: MARYSVILLE

**RDI CALCULATIONS**

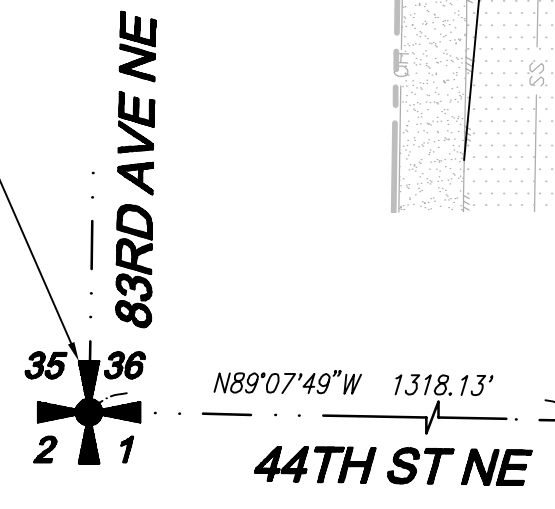
Incentive	Incentive Bonus	Amount Provided	Achieved Units
6. Storm Drainage Facilities			
a. Developments that incorporate active recreation facilities that utilize the storm water facility tract.	5 bonus units per acre of the storm water facility tract used for active recreation.	14,592 sf / 0.34 acres	1.675 points
b. Developments that incorporate passive recreation facilities that utilize the storm water facility tract.	2 bonus units per acre of the storm water facility tract used for passive recreation.	5,707 sf / 0.13 acres	0.26 points
7. Project Design			
c. Installation of perimeter fencing and landscaping, at least six feet in width, in order to improve design or compatibility between neighboring land uses.	1 bonus unit per 500 lineal feet of perimeter fencing or landscaping installed (when not otherwise required by code).	1,604 lf	3.21 points
3. Community Image and Identity			
a. Contribution towards an identified capital improvement project, including, but not limited to, parks, roadways, bicycle facilities, pedestrian facilities, multi-use trails, gateway sign, etc.	\$25,000 per bonus unit. Bonus units may only be claimed in whole numbers or 0.5 bonus unit increments.	\$175,000.00	7
Total Achieved Incentive Units			12.14 points

\* TOTAL ALLOWED NUMBER OF LOTS 28  
 (BASE DENSITY CALCULATION+ INCENTIVES) 16 LOTS + 12 LOTS = 28 LOTS

**DENSITY/OPEN SPACE CALCULATIONS**

	AC (unless otherwise noted)	SF (unless otherwise noted)
Gross Site Area	4.29	186,679
ROW	0.79	34,209
Panhandles	0.00	0
Total Remove for NPA	0.79	34,209
Net Project Area	3.50	152,470
Required Open Space	0.52	22,843
Common Open Space	0.69	29,843
<b>Zoning Density</b>		
Gross Site Area	4.29	186,679
Net Project Area (NPA)	3.50	152,470
Units Allowed (STND) - R-4-8	16 Units	N/A
Units Allowed (with Bonus Density)	28 UNIT (MAX)	N/A
Units Proposed	28 UNITS	N/A
Density Proposed	8 DU/AC	N/A

SW CORNER SECTION 36 FOUND 3" BRASS DISC ON CONC. MON. WITH PUNCH, IN CASE HELD FOR POSITION (11-19-21)



**UTILITY NOTE**  
 THE CONTRACTOR SHALL VERIFY THE LOCATION OF ALL EXISTING UTILITIES PRIOR TO ANY CONSTRUCTION. AGENCIES INVOLVED SHALL BE NOTIFIED WITHIN A REASONABLE TIME PRIOR TO THE START OF CONSTRUCTION.

**DISCLAIMER**  
 THE TOPOGRAPHIC SURVEY WAS PERFORMED BY LDC, INC. IN NOVEMBER 2021. ANY CHANGES TO THE SITE AFTER THIS DATE WILL NOT BE REFLECTED IN THE PLANS. ANY DISCREPANCIES FOUND BETWEEN WHAT IS SHOWN ON THE PLANS AND WHAT IS NOTED IN THE FIELD SHOULD BE BROUGHT IMMEDIATELY TO THE ATTENTION OF THE ENGINEER.

Call 2 Business Days Before You Dig  
**811 or 1-800-424-5555**  
 Utilities Underground Location Center

Drawing: P:\Civil\2021\2021-202\_sunyside\_plat\Drawings\Preliminary\Plat\C21202PP-PP-PL.dwg Printed: Sep 01, 2022 - 11:36am









