

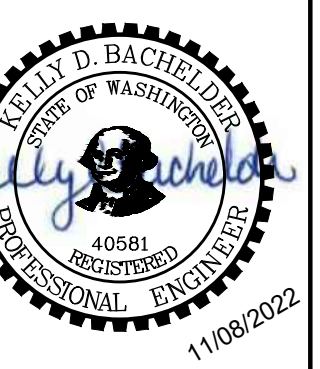
CONSTRUCTION NOTES:

- ① REMOVE EXISTING FENCE AND/OR GATE. SEE PLAN FOR LENGTH.
- ③ REMOVE EXISTING CURB. SEE PLAN FOR LENGTH.
- ⑤ PROTECT EXISTING FENCE.
- ⑥ PROTECT EXISTING SIDEWALK.
- ⑦ PROTECT EXISTING UTILITY POLE.
- ⑧ PROTECT EXISTING DITCH.
- ⑨ REMOVE EXISTING FENCE AS NEEDED DURING CONSTRUCTION. REPLACE FENCE AND GATE AS NECESSARY AFTER PAVING TO SEPARATE PARKING FROM STORAGE AREA.
- ⑫ PROTECT EXISTING DRIVEWAY.
- ⑬ PROTECT EXISTING FIRE HYDRANT.

PLAN VIEW
SCALE: 1" = 50'

EXISTING CONDITIONS AND DEMO PLAN
PARR LUMBER
MARYSVILLE, WASHINGTON

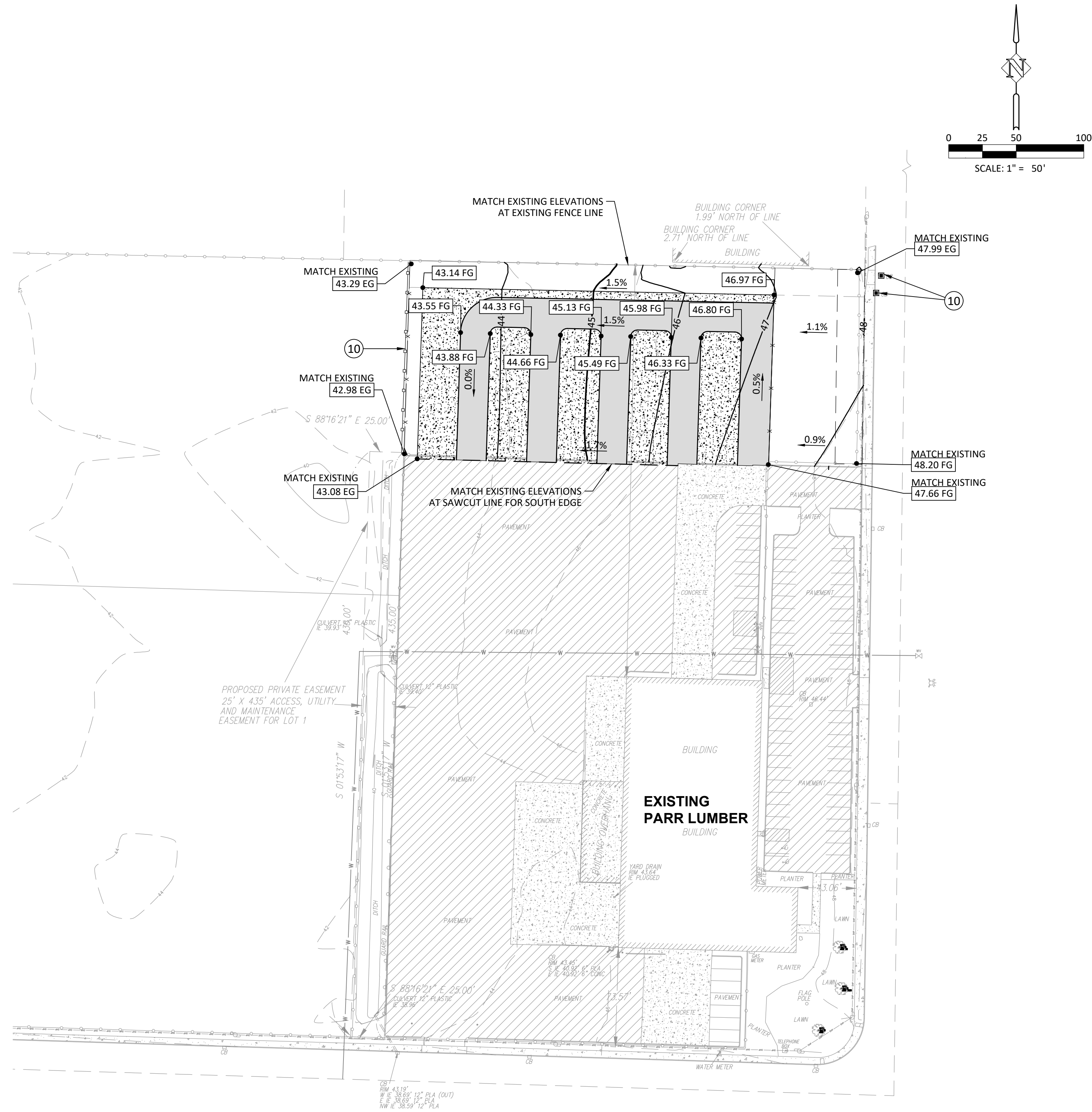
Harper Houf Peterson Righellis Inc.
ENGINEERS * PLANNERS
LANDSCAPE ARCHITECTS * SURVEYORS
1220 Main Street, Suite 150, Vancouver, WA 98660
phone: 360.750.1131 www.hhpr.com fax: 360.750.1141



DESIGNED:	KDB	JWS	KDB	DATE:	11/08/2022
DRAWN:				CHECKED:	

SHEET NO.	C1.1
JOB NO.	PAR-43

P:\02-Vancouver\PAR (PARR LUMBER)\PAR-43 (Marysville Parr Lumber)\PAR-43.DWG(Sheets)\PAR43_2.0 - GRADING.dwg

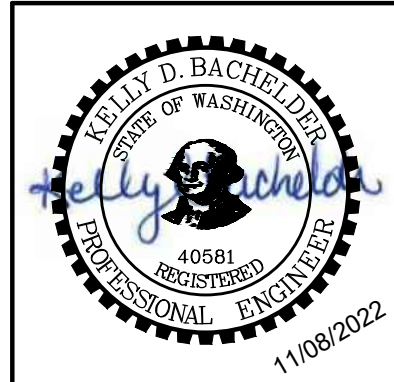


- CONSTRUCTION NOTES:**
- ⑩ INSTALL INLET PROTECTION PER DETAIL, SHEET C3.0.
 - ⑪ INSTALL SEDIMENT FENCE PER DETAIL, SHEET C3.0.

PLAN VIEW
SCALE: 1" = 50'

GRADING PLAN
PARR LUMBER
MARYSVILLE, WASHINGTON

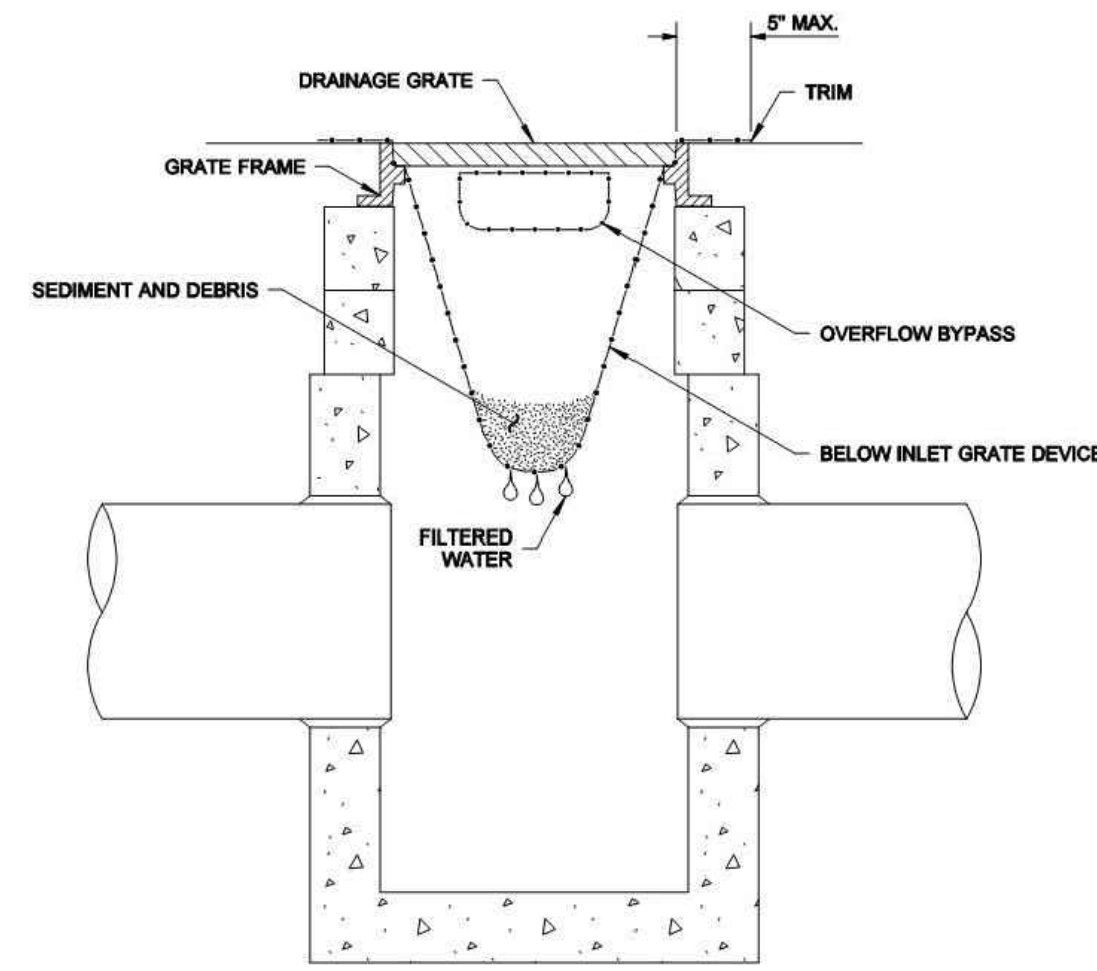
Harper Houf Peterson Righellis Inc.
ENGINEERS * PLANNERS
LANDSCAPE ARCHITECTS * SURVEYORS
1220 Main Street, Suite 150, Vancouver, WA 98660
phone: 360.750.1131 www.hhpr.com fax: 360.750.1141



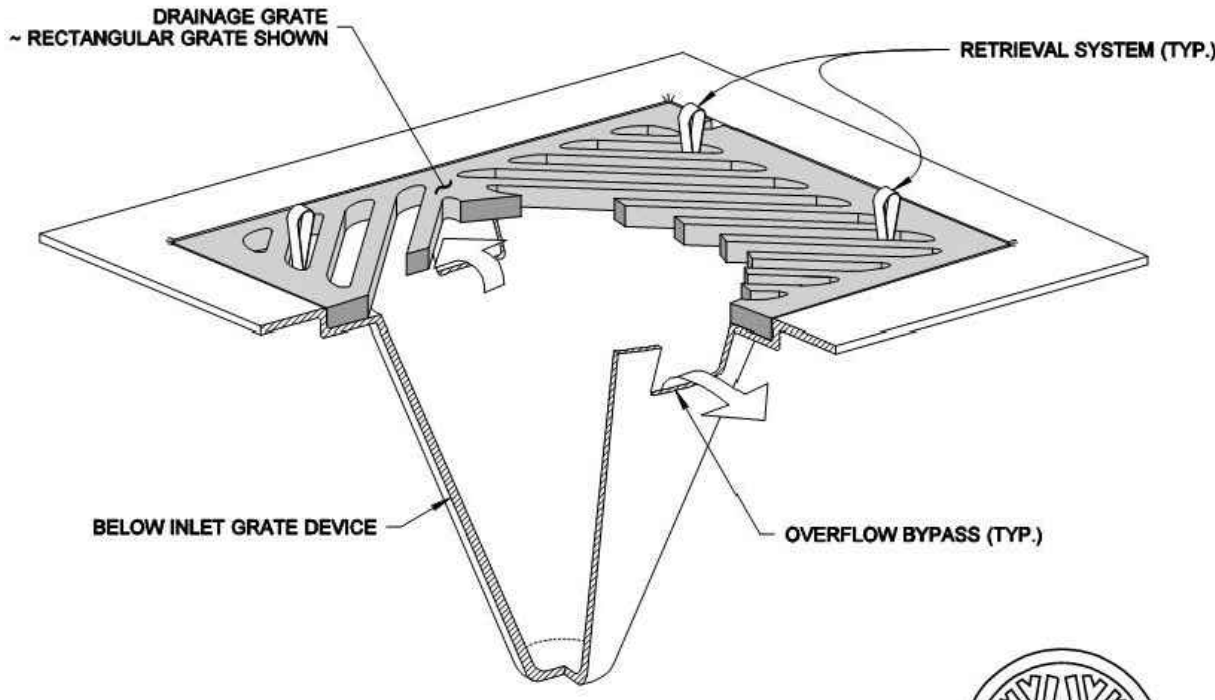
DESIGNED:	KDB	JWS	KDB	DATE:	11/08/2022
DRAWN:					
CHECKED:					

SHEET NO.
C2.0
JOB NO.
PAR-43

DRAWN BY: LISA CYFORD



SECTION VIEW
NOT TO SCALE



ISOMETRIC VIEW

- NOTES**
1. Size the Below Inlet Grate Device (BIGD) for the storm water structure it will service.
 2. The BIGD shall have a built-in high-flow relief system (overflow bypass).
 3. The retrieval system must allow removal of the BIGD without spilling the collected material.
 4. Perform maintenance in accordance with Standard Specification 8-01.3(15).

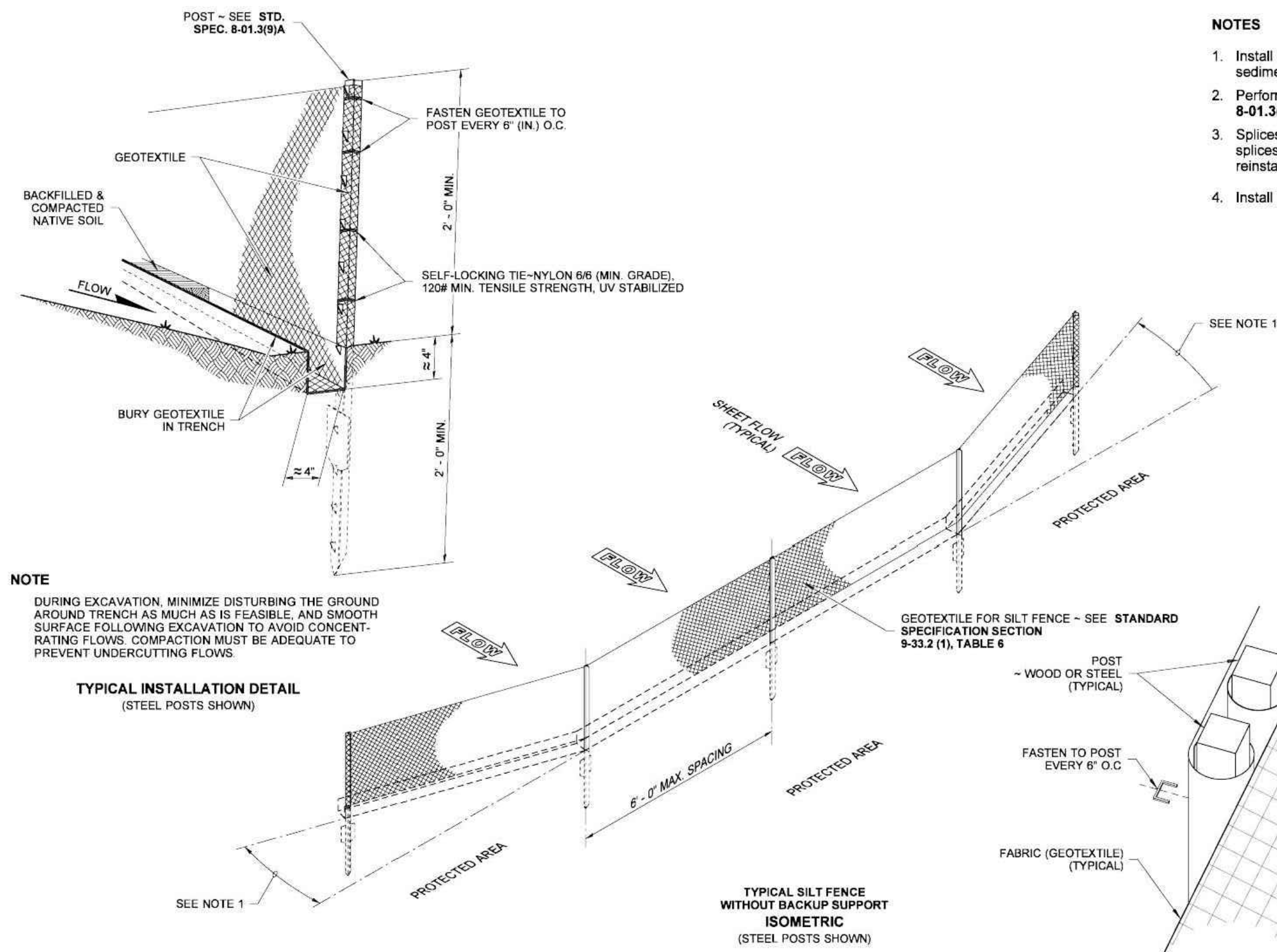


NOTE: THIS PLAN IS NOT A LEGAL ENGINEERING DOCUMENT. IT IS AN ILLUSTRATION ONLY. THE ORIGINAL, SIGNED BY THE ENGINEER AND APPROVED FOR PUBLICATION, IS KEPT ON FILE AT THE WASHINGTON STATE DEPARTMENT OF TRANSPORTATION. A COPY MAY BE OBTAINED UPON REQUEST.

**STORM DRAIN
INLET PROTECTION
STANDARD PLAN I-40.20-00**

SHEET 1 OF 1 SHEET
APPROVED FOR PUBLICATION
Pasco Bakotich III 09-20-07
STATE DESIGN ENGINEER DATE
Washington State Department of Transportation

DRAWN BY: BILL BERENS



NOTE
DURING EXCAVATION, MINIMIZE DISTURBING THE GROUND AROUND TRENCH AS MUCH AS IS FEASIBLE, AND SMOOTH SURFACE FOLLOWING EXCAVATION TO AVOID CONCENTRATING FLOWS. COMPACTION MUST BE ADEQUATE TO PREVENT UNDERCUTTING FLOWS.

- NOTES**
1. Install the ends of the silt fence to point slightly upslope to prevent sediment from flowing around the ends of the fence.
 2. Perform maintenance in accordance with Standard Specifications 8-01.3(9)A and 8-01.3(15).
 3. Splices shall never be placed in low spots or sump locations. If splices are located in low or sump areas, the fence may need to be reinstalled unless the Project Engineer approves the installation.
 4. Install silt fencing parallel to mapped contour lines.



NOTE: THIS PLAN IS NOT A LEGAL ENGINEERING DOCUMENT. IT IS AN ILLUSTRATION ONLY. THE ORIGINAL, SIGNED BY THE ENGINEER AND APPROVED FOR PUBLICATION, IS KEPT ON FILE AT THE WASHINGTON STATE DEPARTMENT OF TRANSPORTATION. A COPY MAY BE OBTAINED UPON REQUEST.

**SILT FENCE
STANDARD PLAN I-30.15-02**

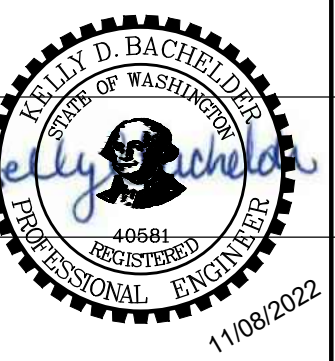
SHEET 1 OF 1 SHEET
APPROVED FOR PUBLICATION
Pasco Bakotich III 3/22/13
STATE DESIGN ENGINEER DATE
Washington State Department of Transportation

SPliced FENCE SECTIONS SHALL BE CLOSE ENOUGH TOGETHER TO PREVENT SILT LADEN WATER FROM ESCAPING THROUGH THE FENCE AT THE OVERLAP.

SPlice DETAIL
(WOOD POSTS SHOWN)

EROSION CONTROL DETAILS
PARR LUMBER
MARYSVILLE, WASHINGTON

Harper Houf Peterson Righellis Inc.
ENGINEERS & PLANNERS
LANDSCAPE ARCHITECTS & SURVEYORS
1220 Main Street, Suite 150, Vancouver, WA 98660
phone: 360.750.1131 www.hhpr.com fax: 360.750.1141



DESIGNED:	KDB
DRAWN:	JWS
CHECKED:	KDB
DATE:	11/08/2022

DATE	NO.	DESCRIPTION

SHEET NO.

C3.0

JOB NO. PAR-43

