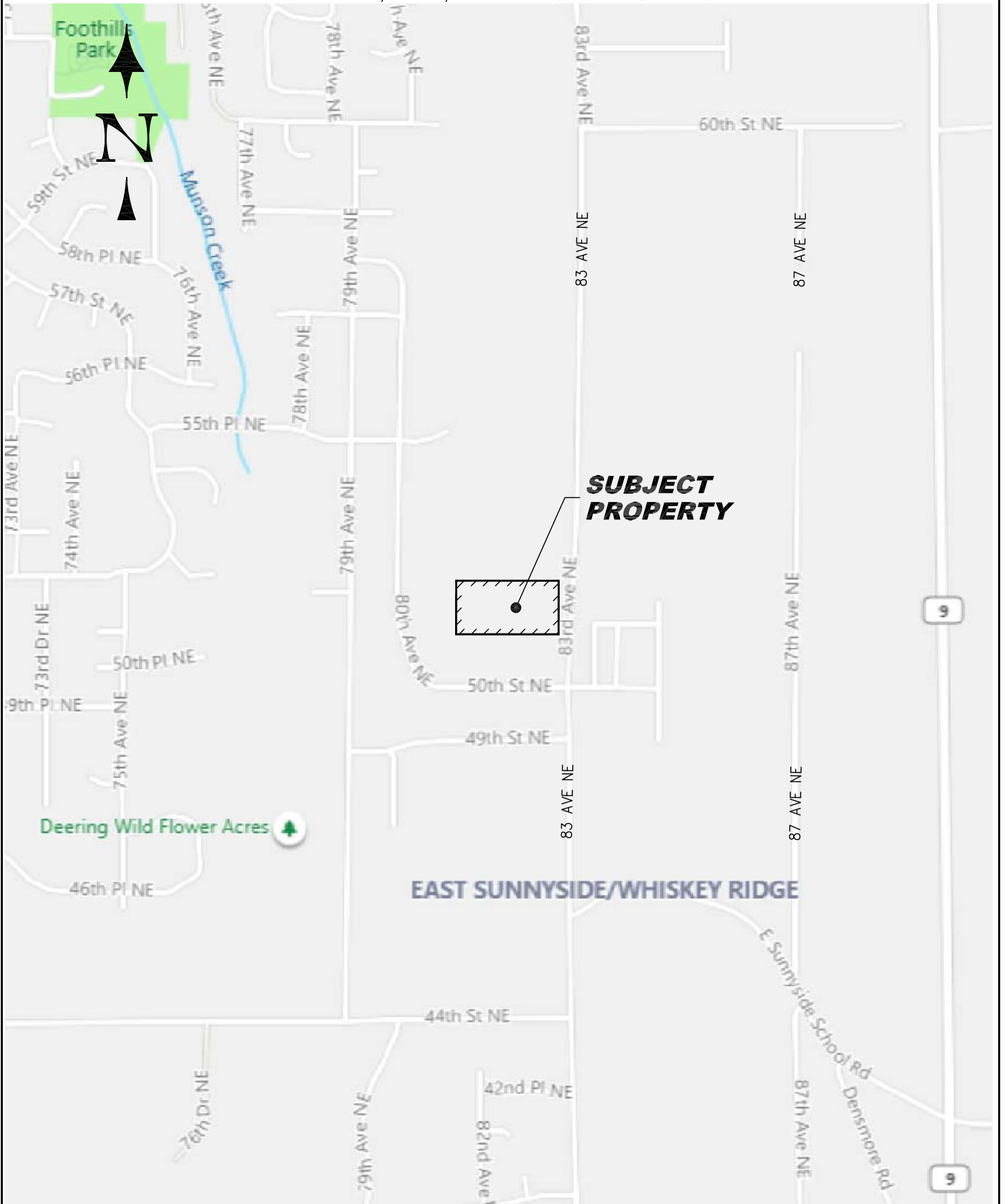


PORTION OF NE 1/4 SE 1/4 OF SEC 35, TWP 30N, RGE 5E, W.M.



**LATTA ENGINEERING PLLC**

Consulting Civil Engineers  
5970 Birch Point Road, Blaine, WA 98230  
Ph: 360 671 7002  
2022 (C) LATTA ENGINEERING PLLC (ALL RIGHTS RESERVED)

**VICINITY MAP**

**GROUNDHOG PRD PRELIMINARY PLAT  
5110 83 AVENUE NE, MARYSVILLE, WA**

DATE: MAY 6, 2022

SCALE: N.T.S.

FIGURE

1