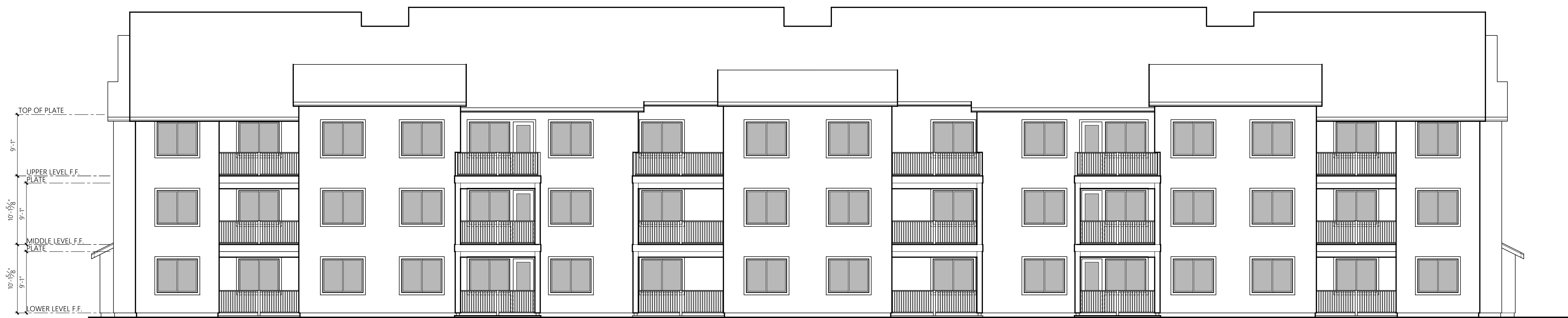




**BUILDING TYPE 1** FRONT ELEVATION  
1/8" = 1'-0"



Lakewood Neighborhood Master Plan - Building Modulation Notes:

**BUILDING TYPE 1** REAR ELEVATION  
1/8" = 1'-0"



**BUILDING TYPE 1** SIDE ELEVATION  
1/8" = 1'-0"

FILE: \214\BUILDING TYPE 1.DWG



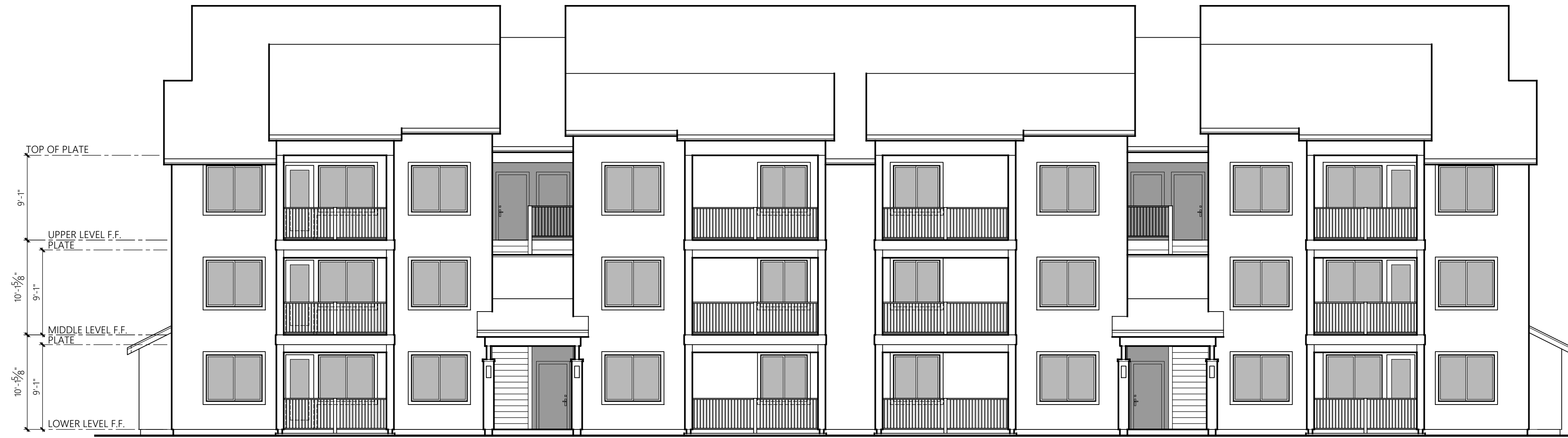
**BUILDING TYPE 2** FRONT ELEVATION  
1/8" = 1'-0"



**BUILDING TYPE 2** REAR ELEVATION  
1/8" = 1'-0"



**BUILDING TYPE 2** SIDE ELEVATION  
1/8" = 1'-0"



**BUILDING TYPE 3** FRONT ELEVATION  
1/8" = 1'-0"



**BUILDING TYPE 3** REAR ELEVATION  
1/8" = 1'-0"



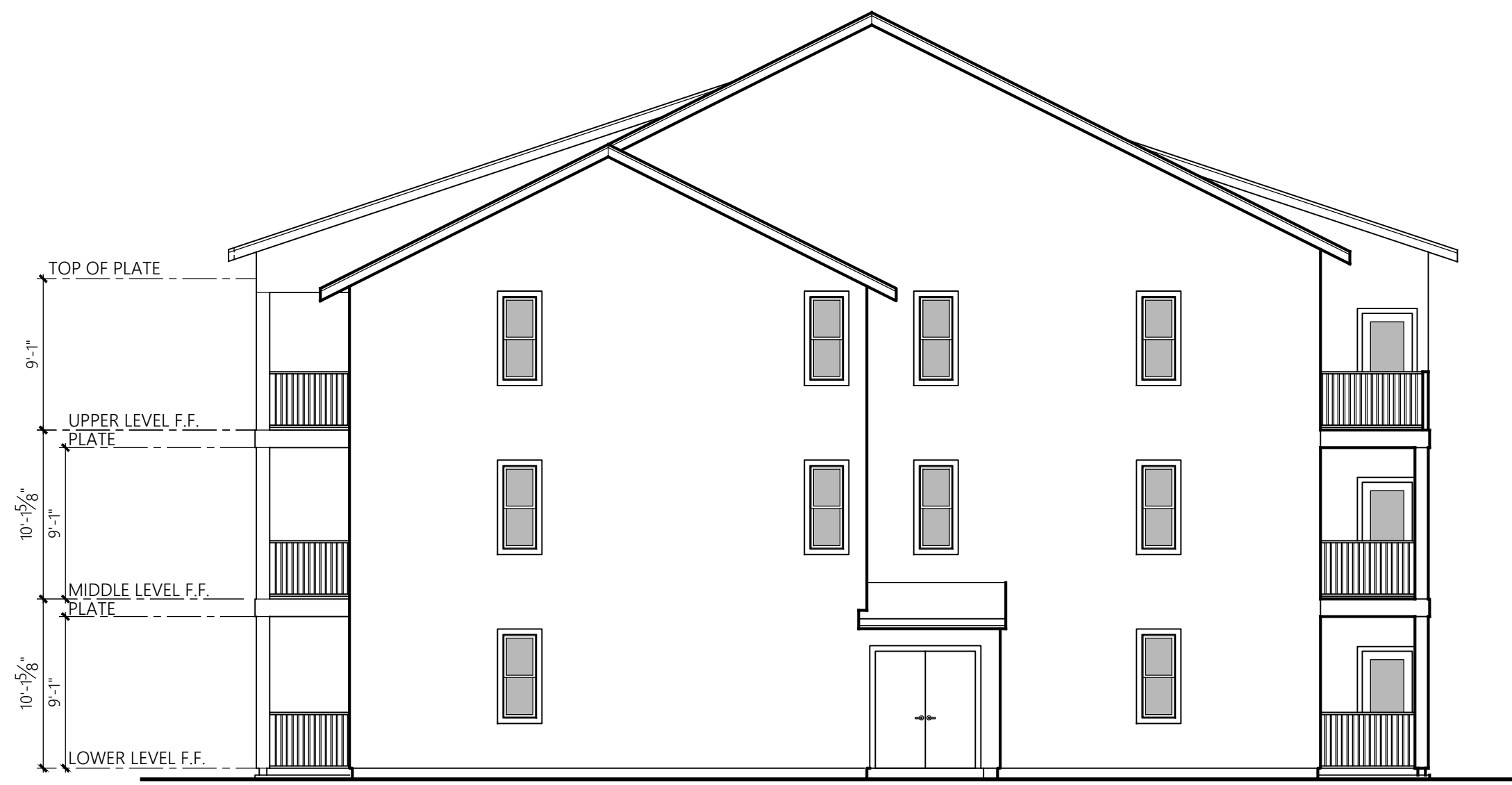
**BUILDING TYPE 3** SIDE ELEVATION  
1/8" = 1'-0"



**BUILDING TYPE 4** FRONT ELEVATION  
1/8" = 1'-0"



**BUILDING TYPE 4** REAR ELEVATION  
1/8" = 1'-0"



**BUILDING TYPE 4** SIDE ELEVATION  
1/8" = 1'-0"

**Building Type 4**  
(Buildings C & O)  
Schematic Exterior Elevations

**Marysville  
172 & 23  
Apartments**  
Marysville,  
Washington

**Intracorp**

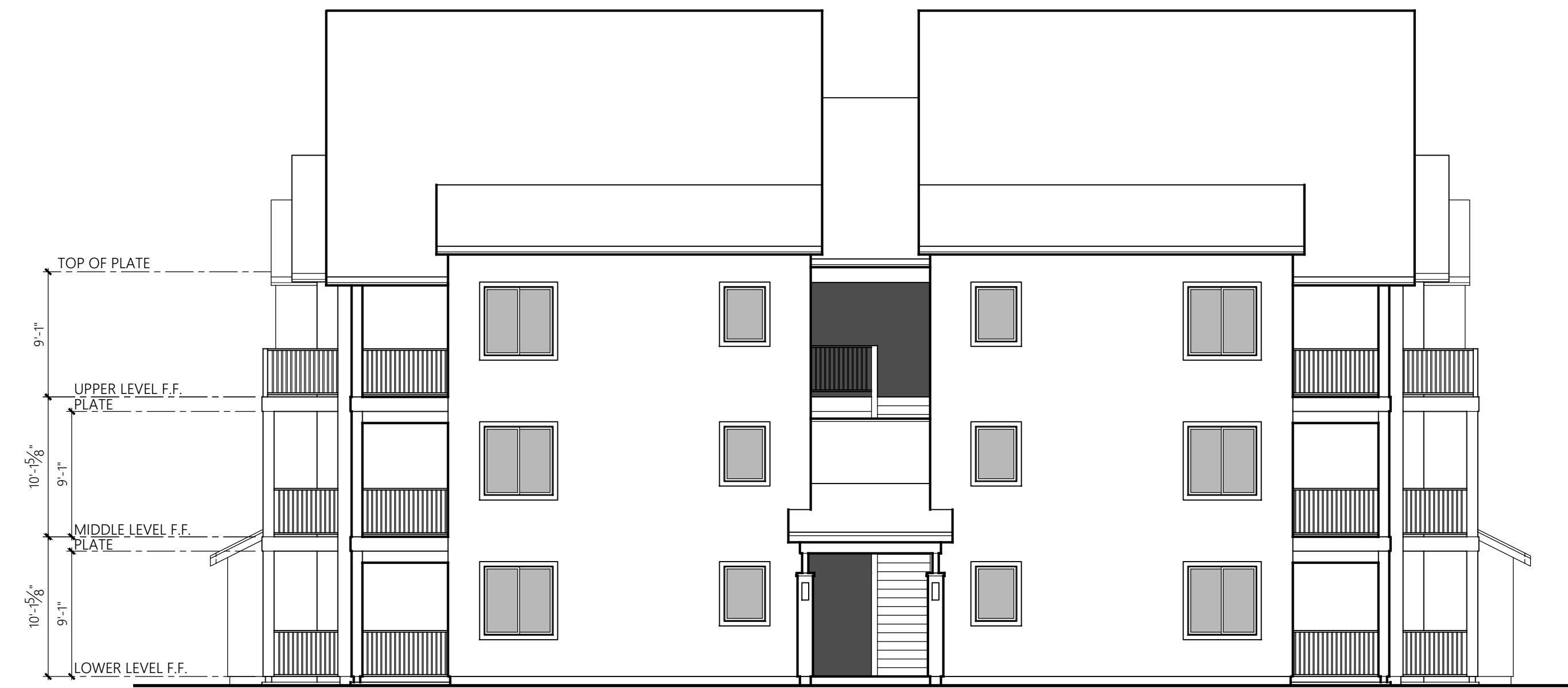
**Revisions**  
No. Date Description

Initial Publish Date:  
Date Plotted: 4-13-22  
Job No.: 21-47 Drawn By: SAT/SV  
Sheet No.:

**E7**



**BUILDING TYPE 5** FRONT ELEVATION  
1/8" = 1'-0"



**BUILDING TYPE 5** REAR ELEVATION  
1/8" = 1'-0"



**BUILDING TYPE 5** SIDE ELEVATION  
1/8" = 1'-0"