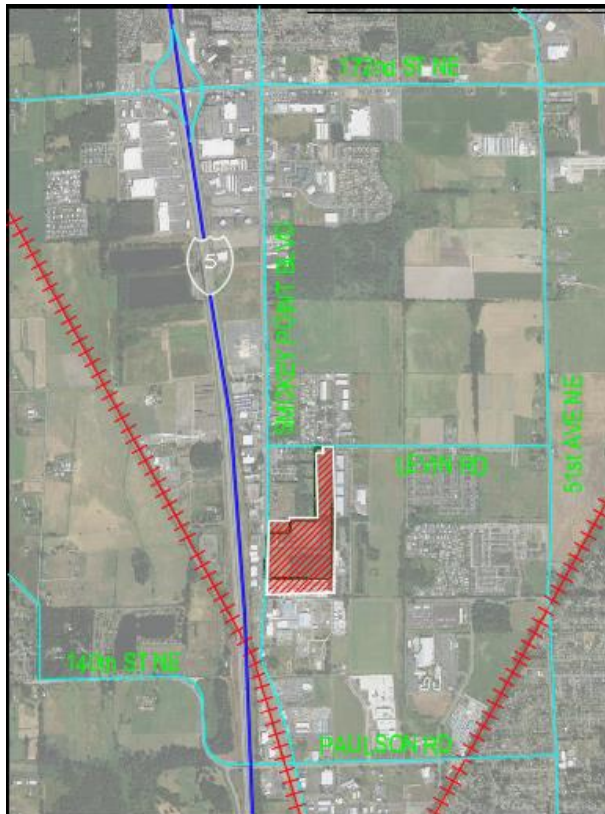


March 1, 2022

City of Marysville
Community Development Department
80 Columbia Avenue
Marysville, WA 98270
Project: Undi Commerce Park, File No. 13-007

Subject: Cover Letter for revised SEPA

The proposed Undi Commerce Park project is located along Smokey Point Blvd, parcel numbers 31053300203000, -3100, 31053300301900, -2300, -2500, -0300, -2700, -0900, -1000, -1100, -2600, -1200, -2200, and -0500. The Light Industrial vacant site would house 815,484 s.f speculative concrete tilt-up warehouses with potential for 85,000 s.f of future office space build out. The warehouses and its associated developed site is programmed to include approximately 139 dock doors, 81 drive-in doors, and 1090 parking stalls. Please see attached Site Plan.



Brian Ludwig, LEED AP
Director of Industrial Development
INNOVA Architects, Inc.
cc: Shale Undi, Undi Properties