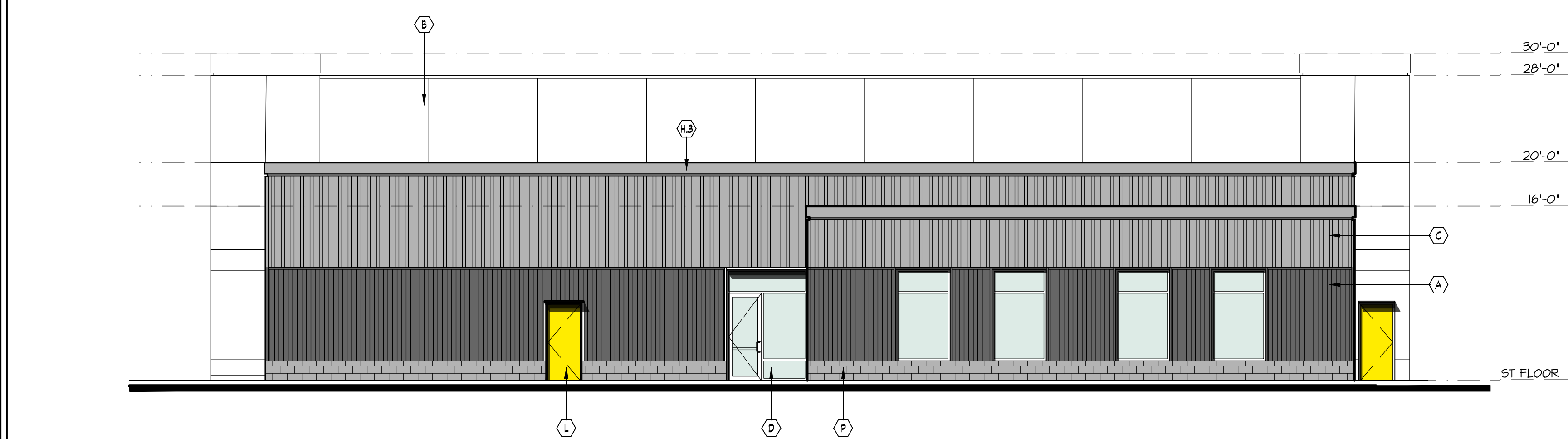


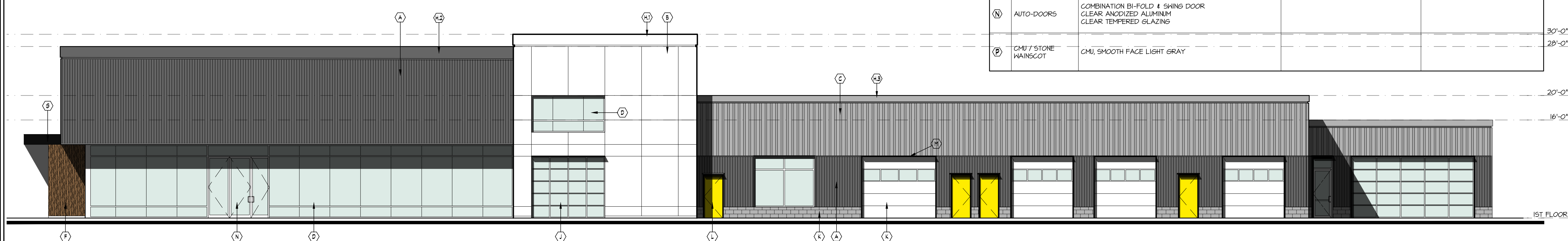
NORTH ELEVATION
SCALE: 1/8" = 1'-0"



EAST ELEVATION
SCALE: 1/8" = 1'-0"



WEST ELEVATION
SCALE: 1/8" = 1'-0"



SOUTH ELEVATION
SCALE: 1/8" = 1'-0"

ELEVATION KEYNOTES

T* INDICATES TEMPERED GLASS

NO.	DESCRIPTION	NOTES, MANUFACT, COLOR	COMMENTS
A	VERTICAL CORRUGATED METAL SIDING	AEP-SPAN, NU-WAVE CORRUGATED COOL DARK BRONZE	
B	FIBER CEMENT PANELS	JAMES HARDIE, HARDIE REVEAL 2.0 PANEL SYSTEM, SMOOTH FINISH, FACTORY PRIMED. SHERWIN WILLIAMS, SW TOTO "SITE WHITE"	
C	VERTICAL RIBBED METAL SIDING	AEP-SPAN, MINI V-RIB VINTAGE	
D	STOREFRONT	CLEAR LOW-E INSULATED GLAZING ALUMINUM FRAMES, CLEAR ANODIZED	
E	STOREFRONT @ ENTRY	CLEAR LOW-E INSULATED GLAZING ALUMINUM FRAMES, ANODIZED OR POWDER COATED BLACK	
F	WOOD LOOK METAL SIDING	QUALITY EDGE, VESTA STEEL SIDING PLANKS 482 "GILDED GRAIN"	VESTIBULE GLADDING & SOFFITS RNM DISTRIBUTORS, (360) 454-0268
G	CANOPY FRAMING	14" TUBE STEEL, FACTORY PRIMED, FIELD PAINTED SHERWIN WILLIAMS, SW 6990 "CAVIAR" ALIPHATIC URETHANE	
H1	COPING & FLASHING	1"-9" HIGH GALV. METAL COPING & FLASHING, FACTORY FINISH AEP SPAN "COOL REGAL WHITE" 3" x 2" SHADOW REVEAL	
H2	COPING & FLASHING	1"-9" HIGH GALV. METAL COPING & FLASHING, FACTORY FINISH AEP SPAN "COOL DARK BRONZE" WITH 3" x 2" SHADOW REVEAL	
H3	COPING & FLASHING	9" HIGH GALV. METAL COPING & FLASHING, FACTORY FINISH AEP SPAN "VINTAGE" WITH 3" x 2" SHADOW REVEAL	
J	OVERHEAD DOOR	INSULATED GLASS PANEL OVERHEAD DOORS, WHITE DOOR FRAME	AT CUSTOMER SERVICE AND NEW CAR DELIVERY
K	OVERHEAD METAL DOOR	INSULATED METAL OVERHEAD DOORS, WHITE FINISH, BLACK DOOR FRAME	AT SERVICE AREAS
L	HOLLOW METAL DOORS	INSULATED HOLLOW METAL DOORS & FRAMES PAINTED BLACK	YELLOW TO MATCH BRANDING COLOR
M	AWNINGS	METAL PLATE AWNING, 12" TO 18" PROJECTION FACTORY PRIMED, FIELD PAINTED SHERWIN WILLIAMS, SW 6990 "CAVIAR" ALIPHATIC URETHANE	TYPICAL AT ALL SERVICE OVERHEAD DOORS AND HOLLOW METAL DOORS
N	AUTO-DOORS	COMBINATION BI-FOLD & SLING DOOR CLEAR ANODIZED ALUMINUM CLEAR TEMPERED GLAZING	
P	CMU / STONE MAJSCOT	CMU, SMOOTH FACE LIGHT GRAY	

21-037 job no.	KN drawn	LM checked	2/15/22 date	revision	no.	date
PLANNING CORRECTIONS SITE PLAN REVIEW SUBMITTAL						
NEW AUTOMOTIVE DEALERSHIP						
QUALITY AUTO CENTER						
15223 SMOKEY POINT BLVD. MARYSVILLE, WASHINGTON 98271						
LANCIE MUELLER & ASSOCIATES						
ARCHITECTS						
130 LAKESIDE • SUITE 250 • SEATTLE, WA 98122 • (206) 325-2553						
sheet						
A3.1						

m:\design\21-jobs\210371\qualityauto\marysville\210371_003_elevs_v3.dwg PLOT DATE: 5/5/2022

