

**GENERAL NOTES**

THE GENERAL CONTRACTOR IS TO PROVIDE SUBGRADES 4" BELOW HARD SURFACES PLUS/MINUS .1 FOOT.

ALL ROUGH GRADING SHALL BE POSITIVE, DRAINING AWAY FROM ALL STRUCTURES.

ALL STONES LARGER THAN 1.5" DIAMETER SHALL BE REMOVED FROM THE GROWING MEDIUM.

TOPSOIL SHALL BE PLACED AT A MINIMUM DEPTH OF 4" IN ALL LAWN AND BED AREAS.

TOPSOIL SHALL BE TILLED INTO THE EXISTING SUBGRADE TO ELIMINATE SOIL INTERFACE PROBLEMS.

TOPSOIL SHALL BE RED-E'S WINTER MIX OR APPROVED EQUAL.

ALL BED AREAS TO RECEIVE 2" OF FINE GROUND FIR OR HEMLOCK BARK, COMPOSITION MULCHES ARE NOT AN ACCEPTABLE ALTERNATIVE.

TREES AND SHRUBS ARE TO BE PLANTED AT A DEPTH 3/4" HIGHER THAN THE LEVEL THAT THEY WERE GROWN IN THE NURSERY.

BARK MULCH IS NOT TO BE PLACED ABOVE THE ROOT CROWN.

ALL PLANTS SHALL AT LEAST CONFORM TO THE MINIMUM STANDARD ESTABLISHED BY THE AMERICAN ASSOCIATION OF NURSERYMEN.

LAWN AREAS ARE TO BE HYDROSEEDDED WITH VAN DEN AKKER'S EMERALD VELVET MIX PER MANUFACTURER'S SPECIFICATIONS, OR APPROVED EQUAL. REMOVE ALL STONES LARGER THAN 1" FROM LAWN AREAS.

SUBSTITUTIONS ARE STRONGLY DISCOURAGED. IF PLANT AVAILABILITY IS A PROBLEM, CONTACT THE LANDSCAPE ARCHITECT FOR SOURCES OR ACCEPTABLE ALTERNATIVES.

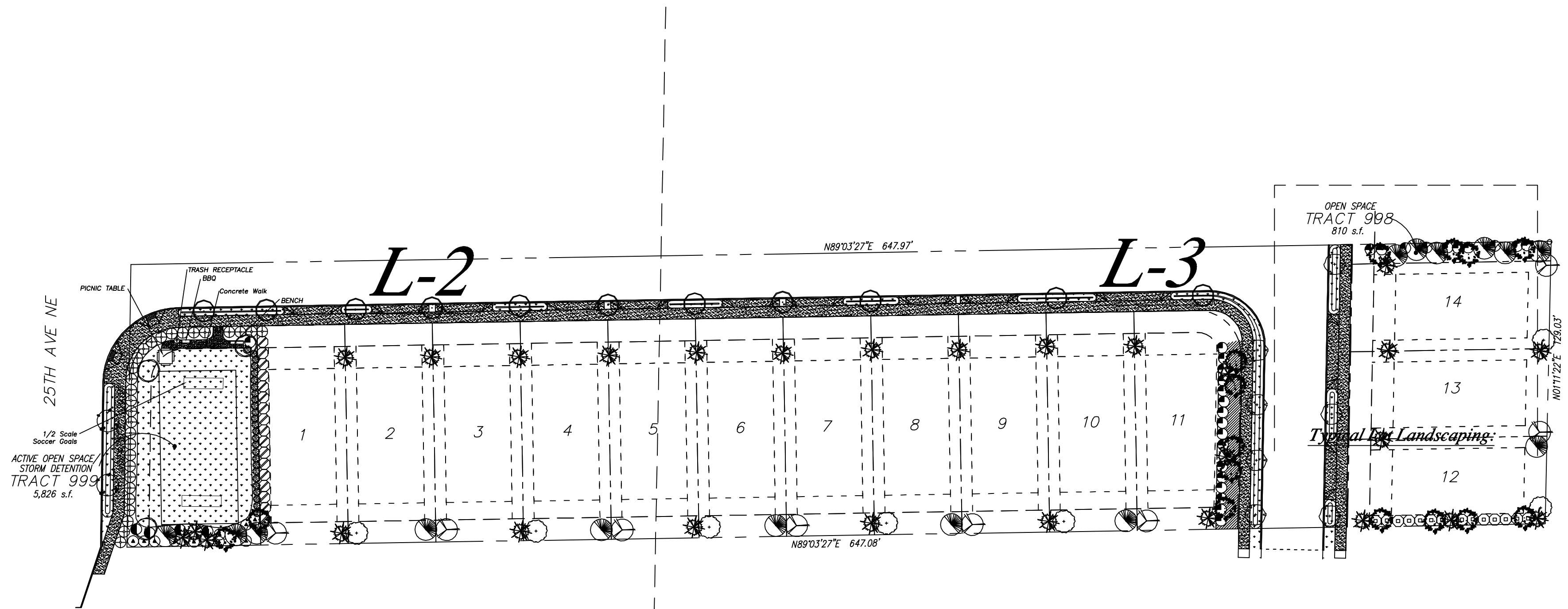
IF THE SITE WORK IS DIFFERENT THAN SHOWN ON THE LANDSCAPE PLAN, OR POOR SOILS AND DEBRIS ARE DISCOVERED, REQUIRING CHANGES TO THE LANDSCAPE PLAN, CONTACT THE LANDSCAPE ARCHITECT FOR INSTRUCTION.

THE LANDSCAPE CONTRACTOR IS RESPONSIBLE FOR MAINTAINING THE LANDSCAPE DURING INSTALLATION, UNTIL FINAL ACCEPTANCE BY THE OWNER'S REPRESENTATIVE.

THE LANDSCAPE CONTRACTOR SHALL WARRANTY ALL MATERIALS AND WORKMANSHIP FOR A PERIOD OF ONE YEAR, FROM THE TIME OF FINAL ACCEPTANCE.

DURING THE WARRANTY PERIOD, THE LANDSCAPE CONTRACTOR WILL NOT BE RESPONSIBLE FOR PLANT DEATH CAUSED BY UNUSUAL CLIMATIC CONDITIONS, VANDALISM, THEFT, FIRE, OR POOR MAINTENANCE PRACTICES. THE LANDSCAPE ARCHITECT SHALL HAVE SOLE AUTHORITY TO DETERMINE THE CAUSE OF DEATH.

PLANT COUNTS PROVIDED ARE ESTIMATES ONLY. CONTRACTOR IS RESPONSIBLE FOR CALCULATING ALL FINAL AREA AND COUNTS.



**LANDSCAPE PLANTING SCHEDULE**

**TREES**

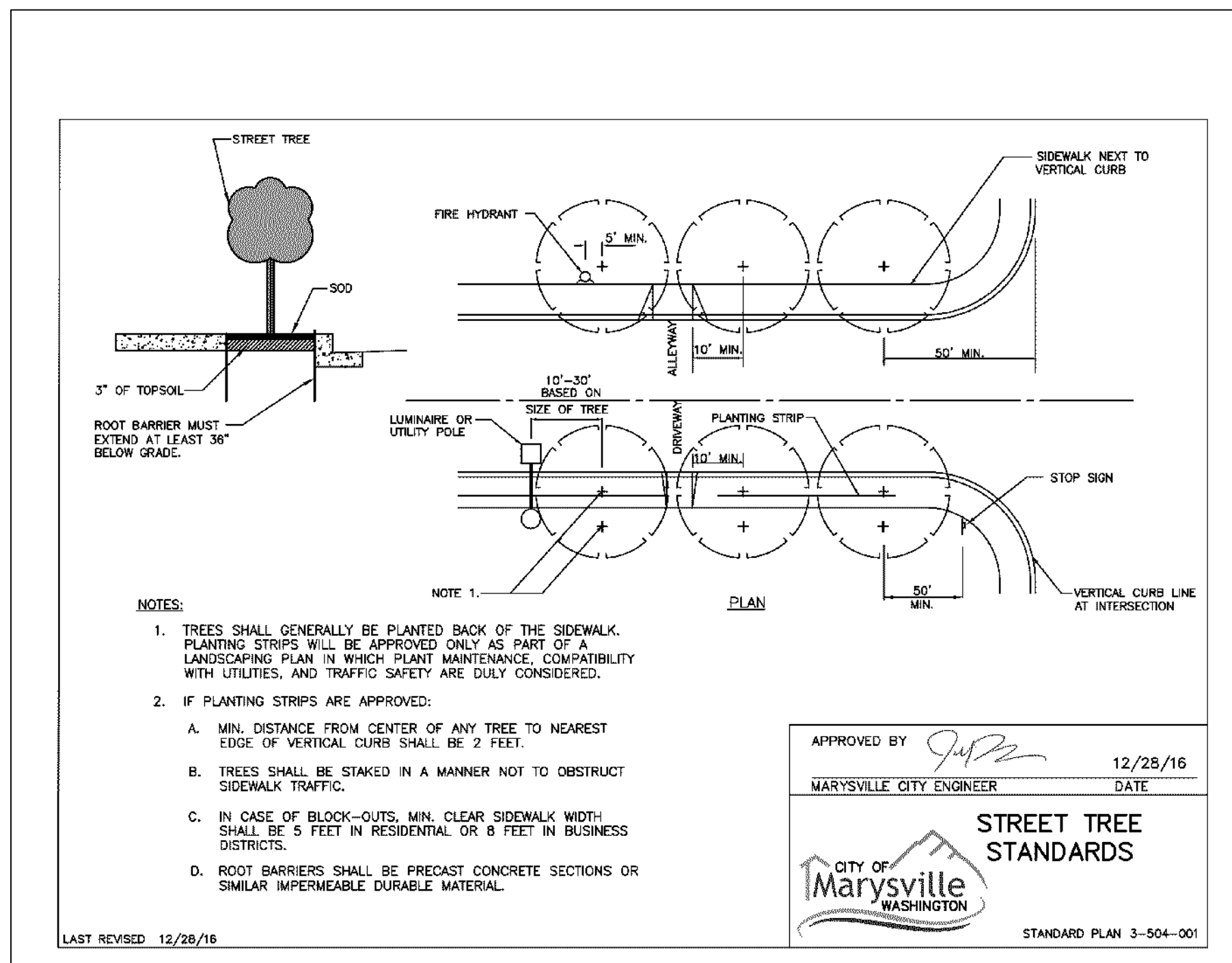
SYMBOL	QTY	BOTANICAL / COMMON NAME	SIZE	CONDITION
	2	Crataegus lavallei / Lavalle Hawthorne	2" CAL.	B&B
	28	Chamaecyparis nootkatensis 'Pendula' / WEEPING ALASKAN CEDAR	6' MIN. HT.	B&B
	15	Cercidiphyllum japonicum / Katsura Tree	6/7'	B&B
	11	Parrotia persica / Persian Parrotia	2" CAL.	B&B
	7	Amalancier alnifolia / Serviceberry	2" CAL.	B&B
	3	Lireodendron tulipifera / Tulip Tree	1 3/4" CAL.	B&B
	8	Cornus kousa / Kousa Dogwood	1 3/4" CAL.	B&B
	7	Acer palmatum / Japonese Maple	1 3/4" CAL.	B&B
	15	Pinus nigra / Austrian Pine	6' MIN. HT.	B&B

**SHRUBS**

SYMBOL	QTY	BOTANICAL / COMMON NAME	SIZE	CONDITION
	10	Rhododendron 'Anah Kruschke' / N.C.N.	21" MIN. HT.	CON. GROWN
	27	Viburnum x burkwoodii / Burkwood Viburnum	21" MIN. HT.	CON. GROWN
	29	Prunus laurocerasus 'Otto Luyken' / OTTO LUYKEN LAUREL	21" MIN. HT.	CON. GROWN
	4	Taxus cuspidata / Japanese Yew	21" MIN. HT.	CON. GROWN
	14	Rhododendron 'Cunningham's White' / N.C.N.	21" MIN. HT.	CON. GROWN
	17	Pieris japonica / Andromeda	21" MIN. HT.	CON. GROWN
	26	Rosa 'Coral Flower Carpet' / Flower Carpet Rose	2 gallon	CON. GROWN

**GROUND COVER**

SYMBOL	QTY	BOTANICAL / COMMON NAME	SIZE	CONDITION
		Grass Area		
	120	Rubus calycinioides / Creeping Salmonberry	4" Pots	24" o.c.

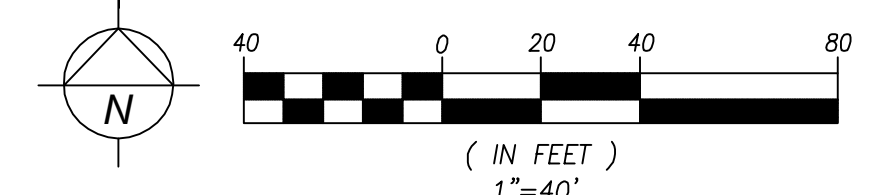


- NOTES:
- TREES SHALL GENERALLY BE PLANTED BACK OF THE SIDEWALK. PLANTING STRIPS WILL BE APPROVED ONLY AS PART OF A LANDSCAPING PLAN IN WHICH PLANT MAINTENANCE, COMPATIBILITY WITH UTILITIES, AND TRAFFIC SAFETY ARE DULY CONSIDERED.
  - IF PLANTING STRIPS ARE APPROVED:
    - MIN. DISTANCE FROM CENTER OF ANY TREE TO NEAREST EDGE OF VERTICAL CURB SHALL BE 2 FEET.
    - TREES SHALL BE STAKED IN A MANNER NOT TO OBSTRUCT SIDEWALK TRAFFIC.
    - IN CASE OF BLOCK-OUTS, MIN. CLEAR SIDEWALK WIDTH SHALL BE 5 FEET IN RESIDENTIAL OR 8 FEET IN BUSINESS DISTRICTS.
    - ROOT BARRIERS SHALL BE PRECAST CONCRETE SECTIONS OR SIMILAR IMPERMEABLE DURABLE MATERIAL.

APPROVED BY 12/28/16  
MARYSVILLE CITY ENGINEER DATE



GRAPHIC SCALE



DATE	REVISION	BY
2.3.22	1	PJU

**Paul Jay**  
Landscape Architect  
1115 Bridge Road  
Eastham, MA 02642  
p. 380.659.8159  
c. 425.210.1986  
e. pauljay@ic@gmail.com



**Evans Park PRD**  
LANDSCAPE PLAN

APPLICANT:  
Huseby Homes

DATE:  
1.29.22

PJLA JOB NO.:

DRAWN BY: PJ

CHECKED BY: PJ

**LANDSCAPE PLAN**

SHEET  
**L-1**  
OF 5

**LANDSCAPE PLANTING SCHEDULE**

**TREES**

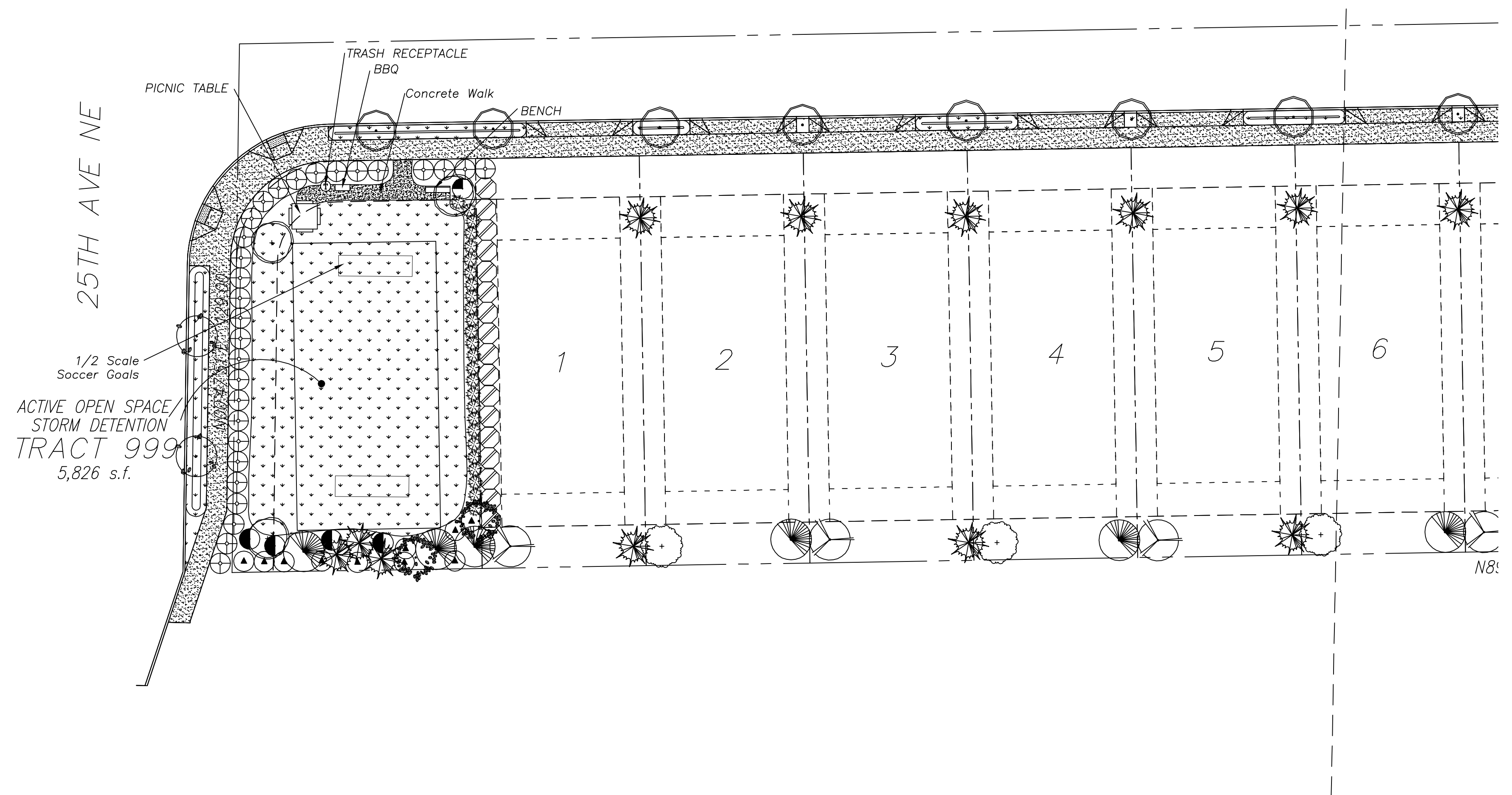
SYMBOL	QTY	BOTANICAL / COMMON NAME	SIZE	CONDITION
	2	<i>Crataegus lavallei</i> / Lavalle Hawthorne	2" CAL.	B&B
	28	<i>Chamaecyparis nootkatensis</i> 'Pendula' / WEEPING ALASKAN CEDAR	6' MIN. HT.	B&B
	15	<i>Cercidiphyllum japonicum</i> / Katsura Tree	6/7'	B&B
	11	<i>Parrotia persica</i> / Persian Parrotia	2" CAL.	B&B
	7	<i>Amelancier alnifolia</i> / Serviceberry	2" CAL.	B&B
	3	<i>Lireodendron tulipifera</i> / Tulip Tree	1 3/4" CAL.	B&B
	8	<i>Cornus kousa</i> / Kousa Dogwood	1 3/4" CAL.	B&B
	7	<i>Acer palmatum</i> / Japanese Maple	1 3/4" CAL.	B&B
	15	<i>Pinus nigra</i> / Austrian Pine	6' MIN. HT.	B&B

**SHRUBS**

SYMBOL	QTY	BOTANICAL / COMMON NAME	SIZE	CONDITION
	10	<i>Rhododendron</i> 'Anah Kruschke' / N.C.N.	21" MIN. HT.	CON. GROWN
	27	<i>Viburnum x burkwoodii</i> / Burkwood Viburnum	21" MIN. HT.	CON. GROWN
	29	<i>Prunus laurocerasus</i> 'Otto Luyken' / OTTO LUYKEN LAUREL	21" MIN. HT.	CON. GROWN
	4	<i>Taxus cuspidata</i> / Japanese Yew	21" MIN. HT.	CON. GROWN
	14	<i>Rhododendron</i> 'Cunningham's White' / N.C.N.	21" MIN. HT.	CON. GROWN
	17	<i>Pieris japonica</i> / Andromeda	21" MIN. HT.	CON. GROWN
	26	<i>Rosa</i> 'Coral Flower Carpet' / Flower Carpet Rose	2 gallon	CON. GROWN

**GROUND COVER**

SYMBOL	QTY	BOTANICAL / COMMON NAME	SIZE	CONDITION
		Grass Area		
	120	<i>Rubus calycioides</i> / Creeping Salmonberry	4" Pots	24" o.c.



DATE	REVISION	BY
2.3.22	1	PJJ

**Paul Jay**  
Landscape Architect  
1115 Bridge Road  
Eastham, MA 02642  
p. 380.659.8159  
c. 425.210.1986  
e. pauljay@gmail.com



**Evans Park PRD**  
LANDSCAPE PLAN

APPLICANT:  
Huseby Homes

DATE:  
1.29.22

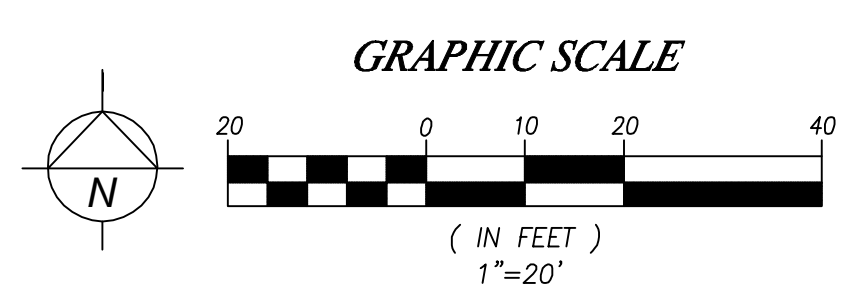
PJLA JOB NO.:

DRAWN BY: PJ

CHECKED BY: PJ

LANDSCAPE PLAN

SHEET  
**L-2**  
OF 5



**LANDSCAPE PLANTING SCHEDULE**

**TREES**

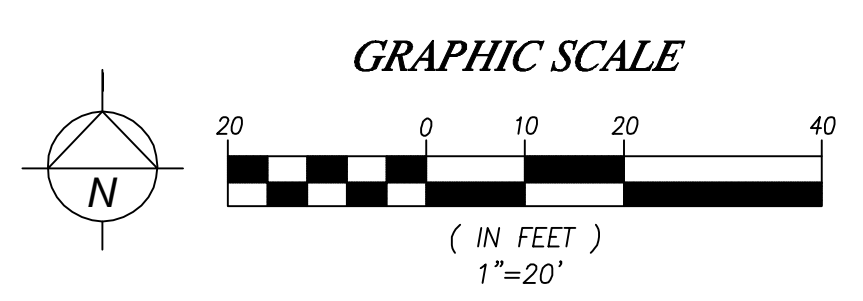
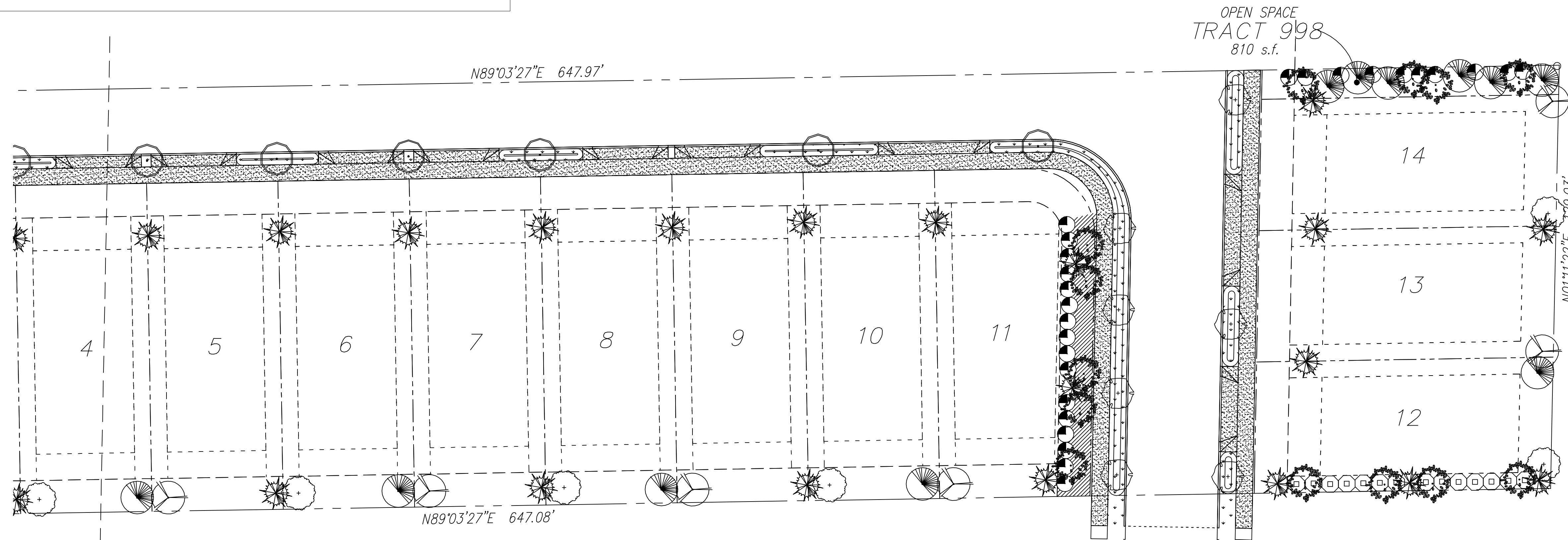
SYMBOL	QTY	BOTANICAL / COMMON NAME	SIZE	CONDITION
	2	<i>Crataegus lavallei</i> / Lavalle Hawthorne	2" CAL.	B&B
	28	<i>Chamaecyparis nootkatensis</i> 'Pendula' / WEEPING ALASKAN CEDAR	6' MIN. HT.	B&B
	15	<i>Cercidiphyllum japonicum</i> / Katsura Tree	6/7'	B&B
	11	<i>Parrotia persica</i> / Persian Parrotia	2" CAL.	B&B
	7	<i>Amalancier alnifolia</i> / Serviceberry	2" CAL.	B&B
	3	<i>Lireodendron tulipifera</i> / Tulip Tree	1 3/4" CAL.	B&B
	8	<i>Cornus kousa</i> / Kousa Dogwood	1 3/4" CAL.	B&B
	7	<i>Acer palmatum</i> / Japanese Maple	1 3/4" CAL.	B&B
	15	<i>Pinus nigra</i> / Austrian Pine	6' MIN. HT.	B&B

**SHRUBS**

SYMBOL	QTY	BOTANICAL / COMMON NAME	SIZE	CONDITION
	10	<i>Rhododendron</i> 'Anah Kruschke' / N.C.N.	21" MIN. HT.	CON. GROWN
	27	<i>Viburnum x burkwoodii</i> / Burkwood Viburnum	21" MIN. HT.	CON. GROWN
	29	<i>Prunus laurocerasus</i> 'Otto Luyken' / OTTO LUYKEN LAUREL	21" MIN. HT.	CON. GROWN
	4	<i>Taxus cuspidata</i> / Japanese Yew	21" MIN. HT.	CON. GROWN
	14	<i>Rhododendron</i> 'Cunningham's White' / N.C.N.	21" MIN. HT.	CON. GROWN
	17	<i>Pieris japonica</i> / Andromeda	21" MIN. HT.	CON. GROWN
	26	<i>Rosa</i> 'Coral Flower Carpet' / Flower Carpet Rose	2 gallon	CON. GROWN

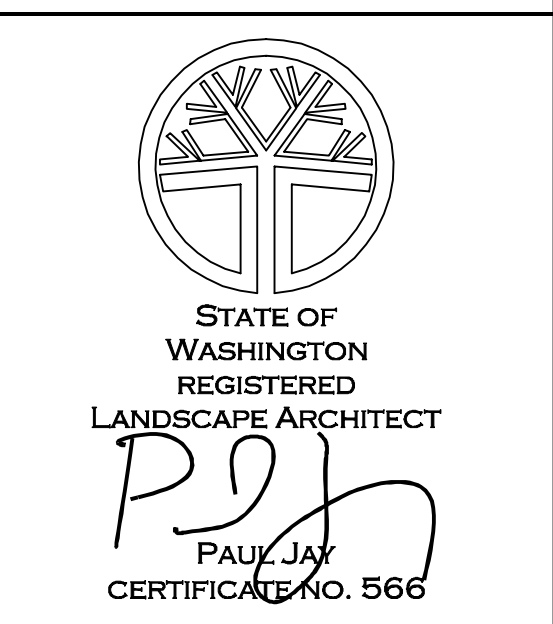
**GROUND COVER**

SYMBOL	QTY	BOTANICAL / COMMON NAME	SIZE	CONDITION
		Grass Area		
	120	<i>Rubus calycioides</i> / Creeping Salmonberry	4" Pots	24" o.c.



DATE	REVISION	BY
2.3.22	1	PJU

**Paul Jay**  
 Landscape Architect  
 1115 Bridge Road  
 Eastham, MA 02642  
 p. 360.659.8169  
 c. 425.210.1986  
 e. pauljay@gmail.com



**Evans Park PRD**  
 LANDSCAPE PLAN

APPLICANT:  
 Huseby Homes

DATE:  
 1.29.22

PJLA JOB NO.:

DRAWN BY: PJ

CHECKED BY: PJ

LANDSCAPE PLAN

SHEET  
**L-3**  
 OF 5