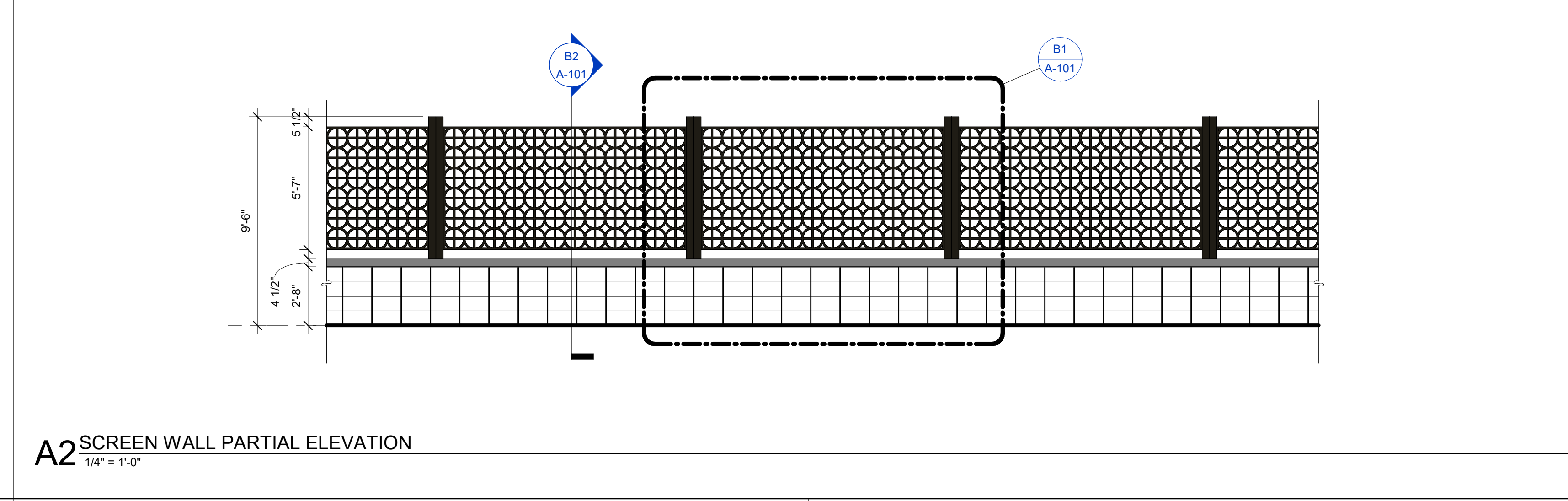
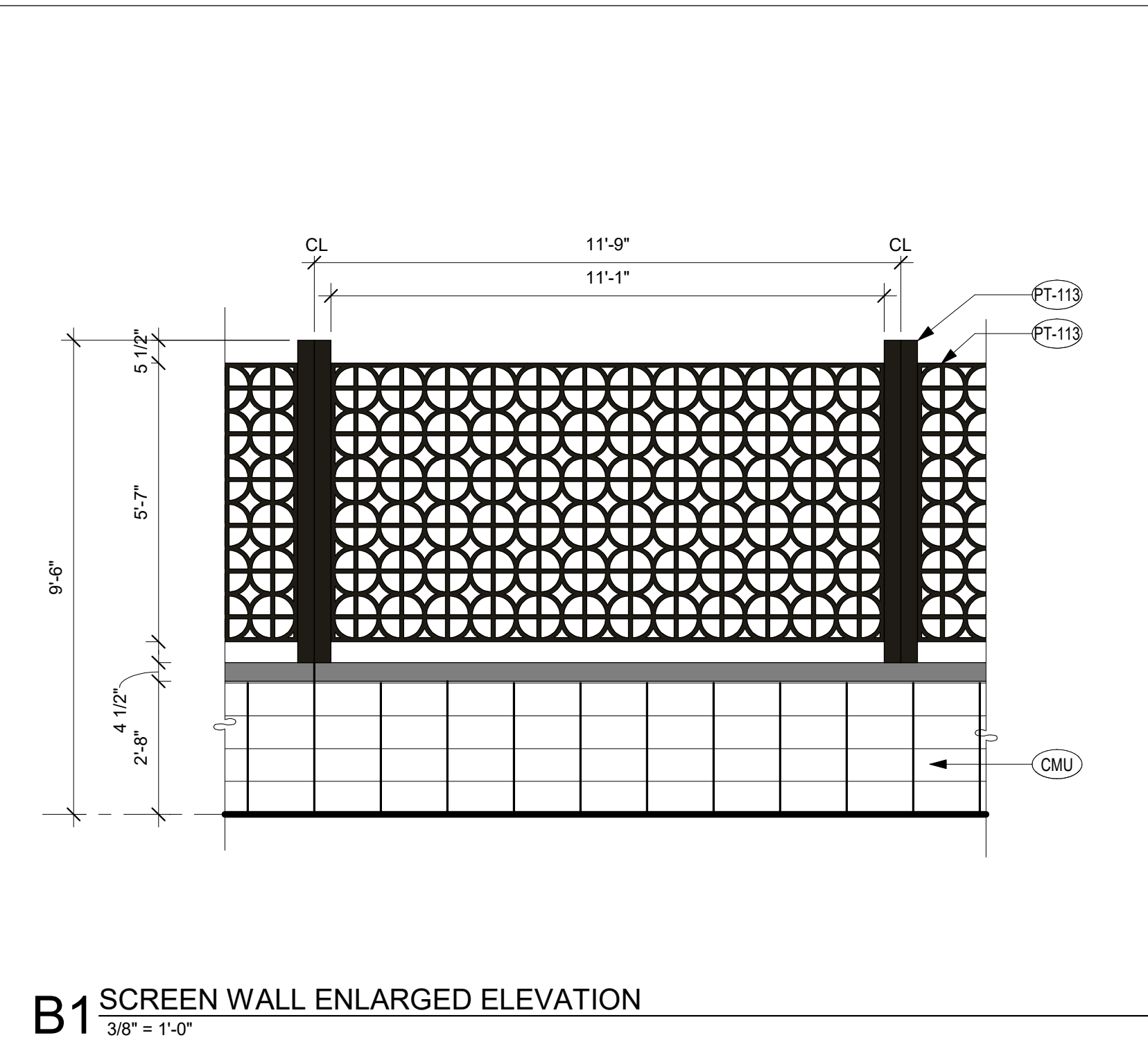
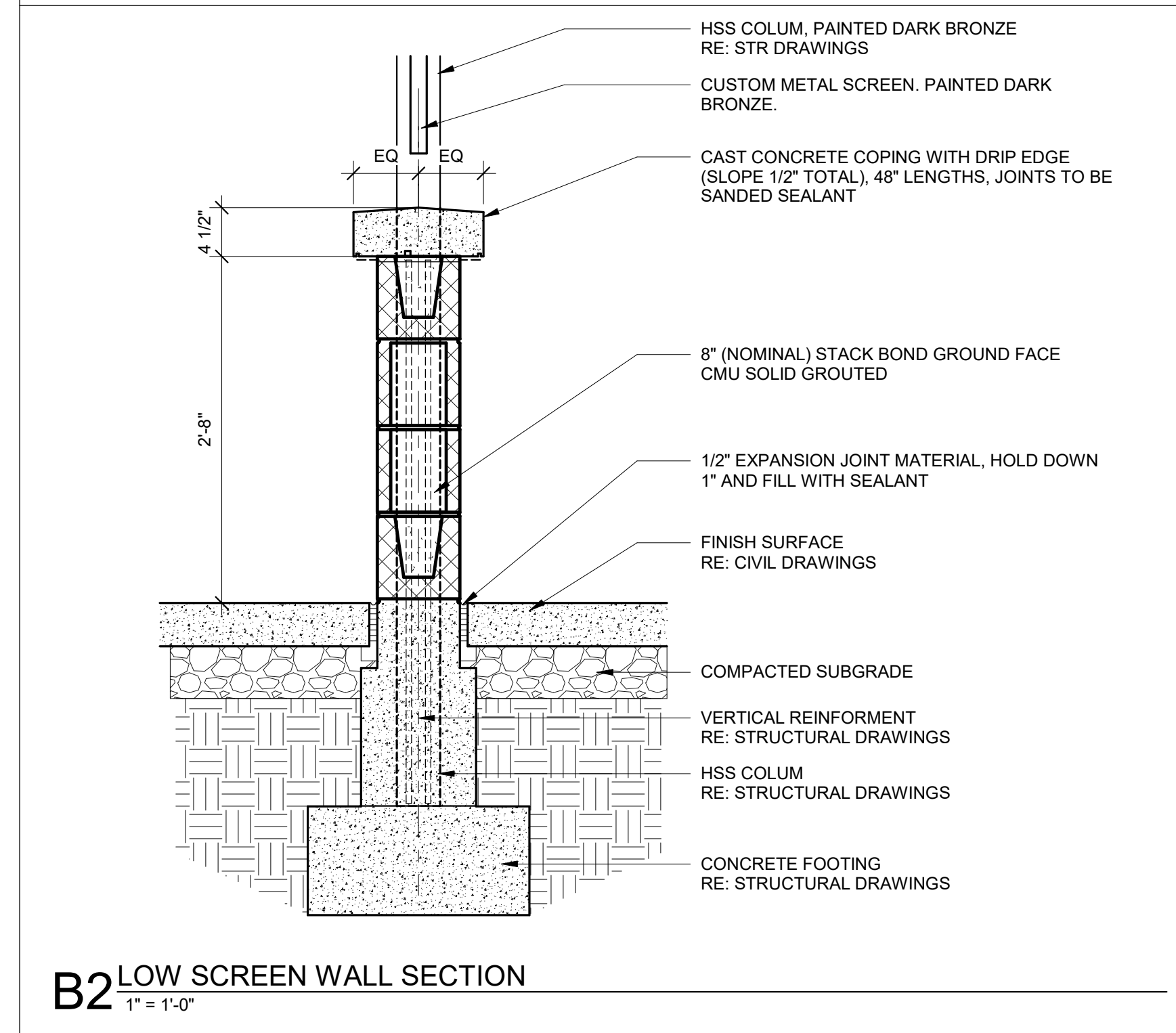
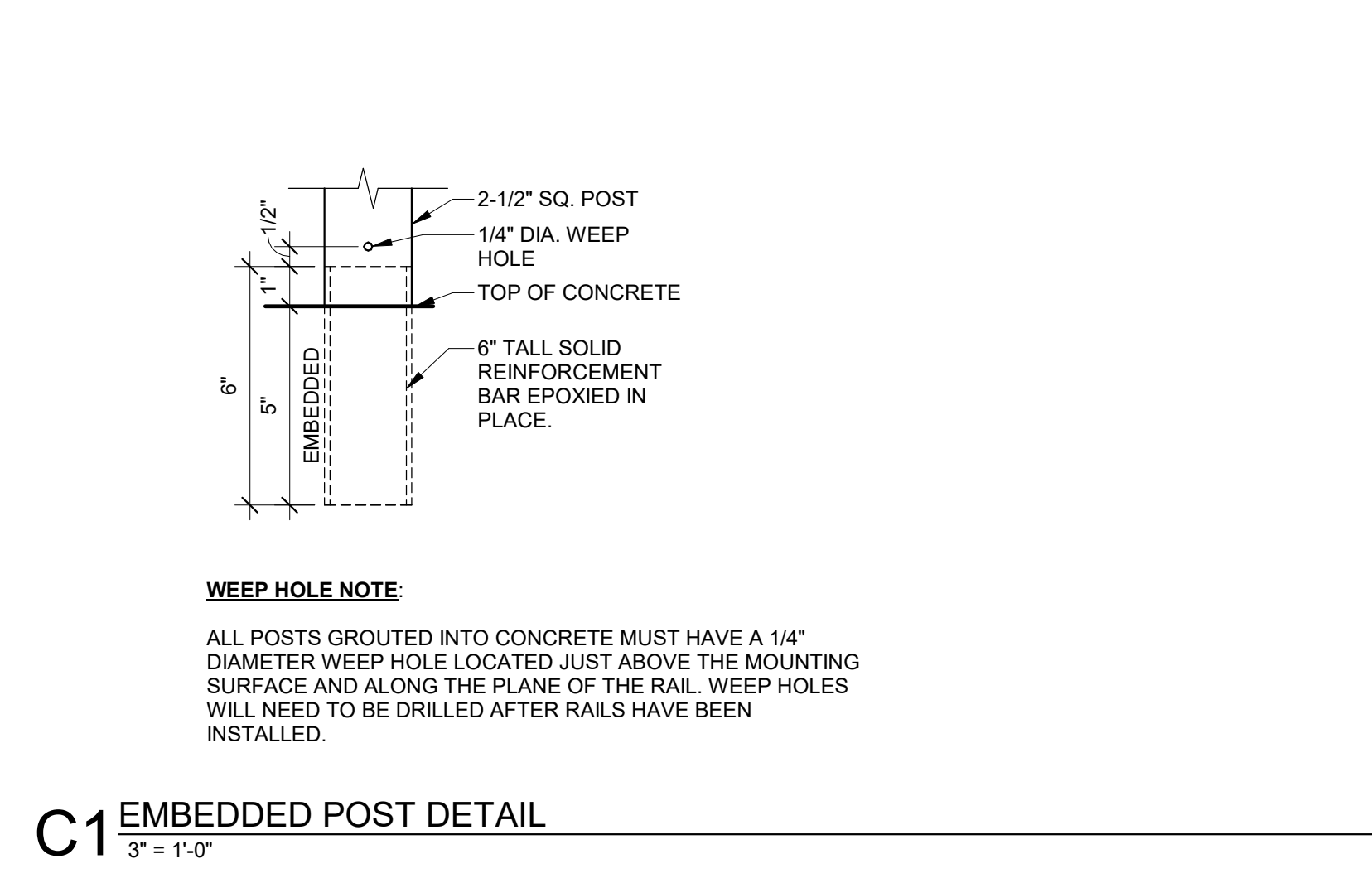
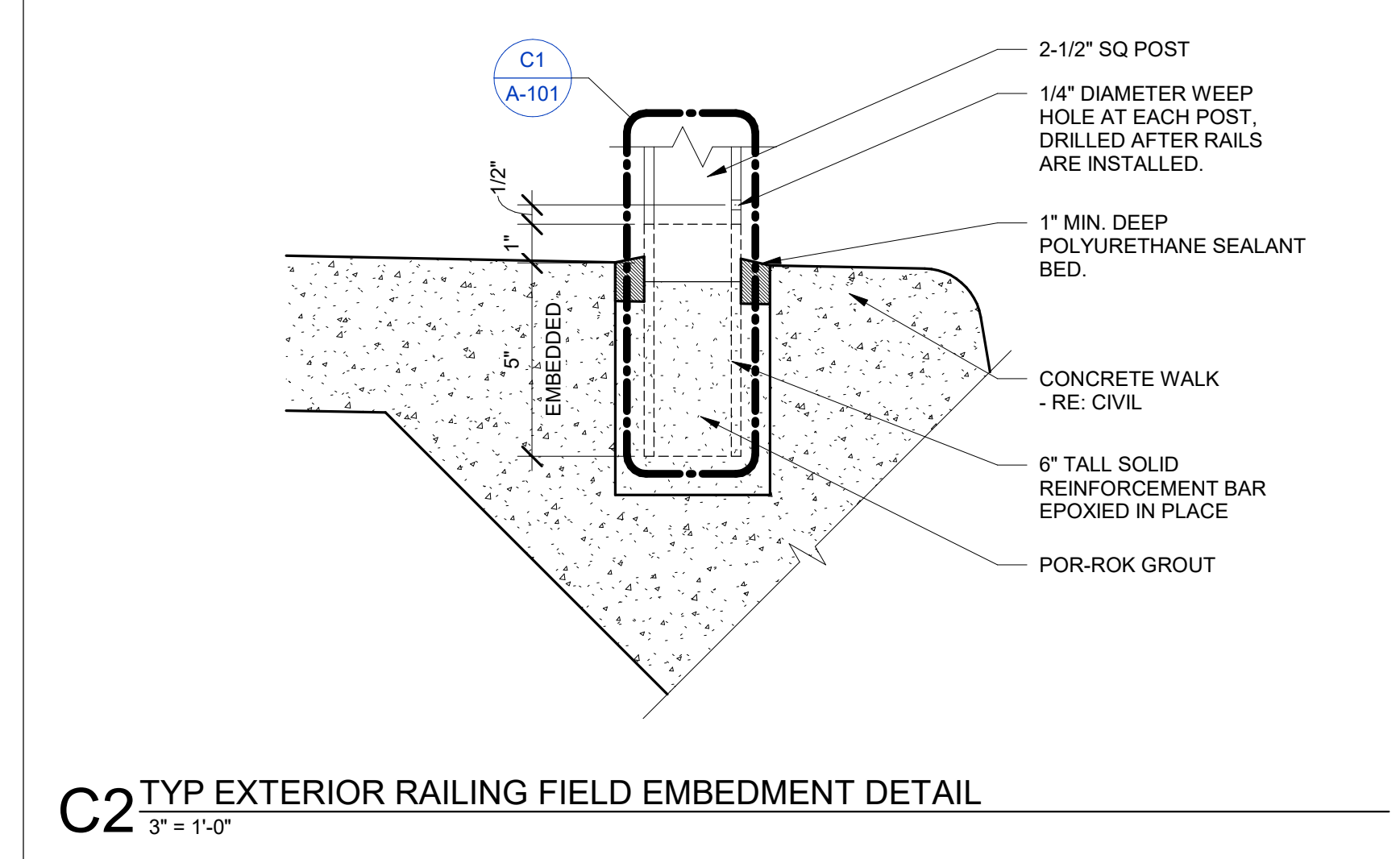
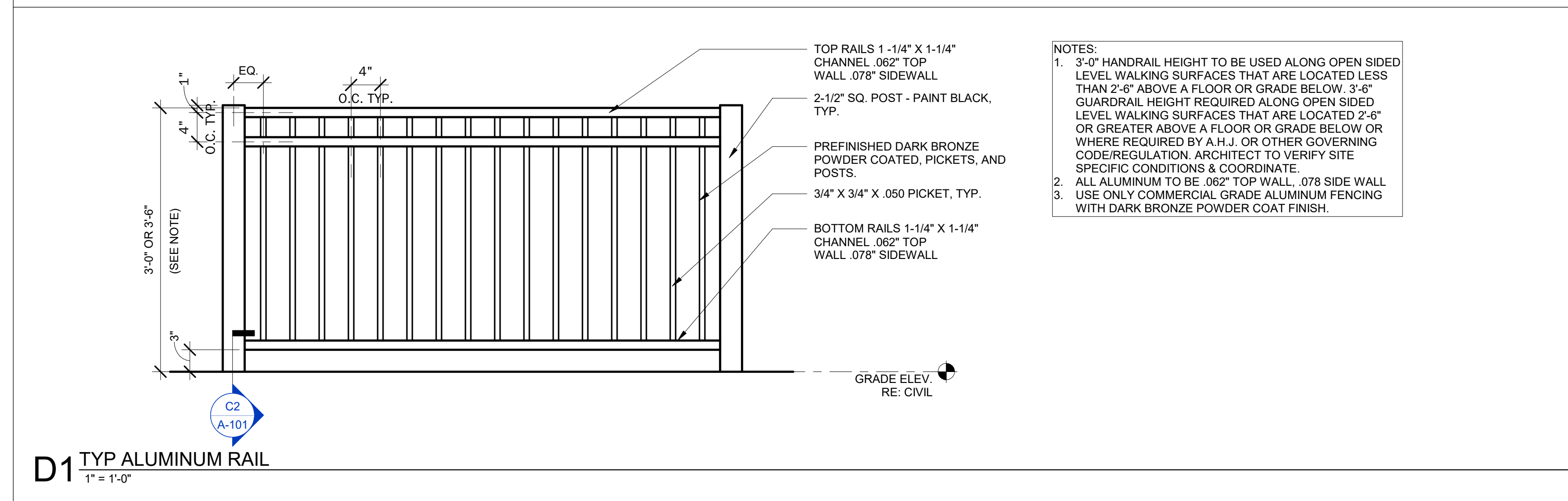


Mark	Type	Count	Manufacturer	Model	Width	Depth	Height	Material	Finish	Comments
1	Patio Chair	32	Benchmark Design Group	WENDOVER CHAIR						
2	Patio Table - 4 Top	5	Benchmark Design Group	TAB3055-3636-AAL-WJ-UH-BDT	3'-0"	3'-0"	2'-5 1/4"	Aluminum - Dark Bronze	RAL 49/66220 (C34 Bronze One Coat)	
3	Patio Table - 4 Top - ADA	1	Benchmark Design Group	TAB3055-3644-AAL-WJ-UH-BDT	3'-6"	3'-0"	2'-5 1/4"	Aluminum - Dark Bronze	RAL 49/66220 (C34 Bronze One Coat)	
4	Patio Table - 2 Top	4	Benchmark Design Group	TAB3055-2424-AAL-WJ-BDT	2'-0"	2'-0"	2'-5 1/4"	Aluminum - Dark Bronze	RAL 49/66220 (C34 Bronze One Coat)	
5	Patio Umbrella	6	Tuuci	OCEAN MASTER PARASOL						
6	Trash Receptacle	2	Benchmark Design Group	CFA-AL-2444	2'-0"	2'-0"	3'-11"	Dark Bronze	RAL 49/66220 (C34 Bronze One Coat)	
8	Bike Rack - Surface Mount	2	Belson Outdoors	ORN-2-SF-P	3'-4"	2 3/8"	2'-9"	Steel	Black Powder Coated	
10	Welcome Bench	1	Benchmark Design Group	AUSTIN BENCH WITH SLATS						SEE KEYNOTE 10 ON SITE PLAN SHEET (A-100) FOR LOCATION.



**WARE MALCOLM**  
 ARCHITECTURE  
 PLANNING  
 INTERIORS  
 4000 WOODBRIDGE  
 WASHINGTON, DC 20007  
 P: 202.670.0100

**CHICK-FIL-A**  
**HWY 9 & SOPER HILL RD.**  
 8833 SOPER HILL RD.  
 MARYSVILLE, WASHINGTON  
 98270-6882

**FSR#05328**  
 BUILDING TYPE / SIZE: P14 SE XP  
 RELEASE: 23.05  
 PRINTED FOR:  
**CD SET**  
 REVISION SCHEDULE  
 NO. DATE DESCRIPTION

CONSULTANT PROJECT # SEA22-0053-00  
 DATE: 04/26/2024  
 DRAWN BY: V.Z.  
 Information contained on this drawing and all digital files produced for above named project may not be reproduced in any manner without express written or verbal consent from authorized project representatives.  
**SHEET PATIO PLAN AND DETAILS**  
 SHEET NUMBER **A-101**

5/28/2024 11:42:24 AM Autodesk Docs://WA\_05328\_Hwy 9 & Soper Hill Rd\_2023.3\_FSR#05328\_Hwy 9 & Soper Hill Rd\_ARC.rvt 10-SE-05328-A-101-PATIO PLAN AND DETAILS