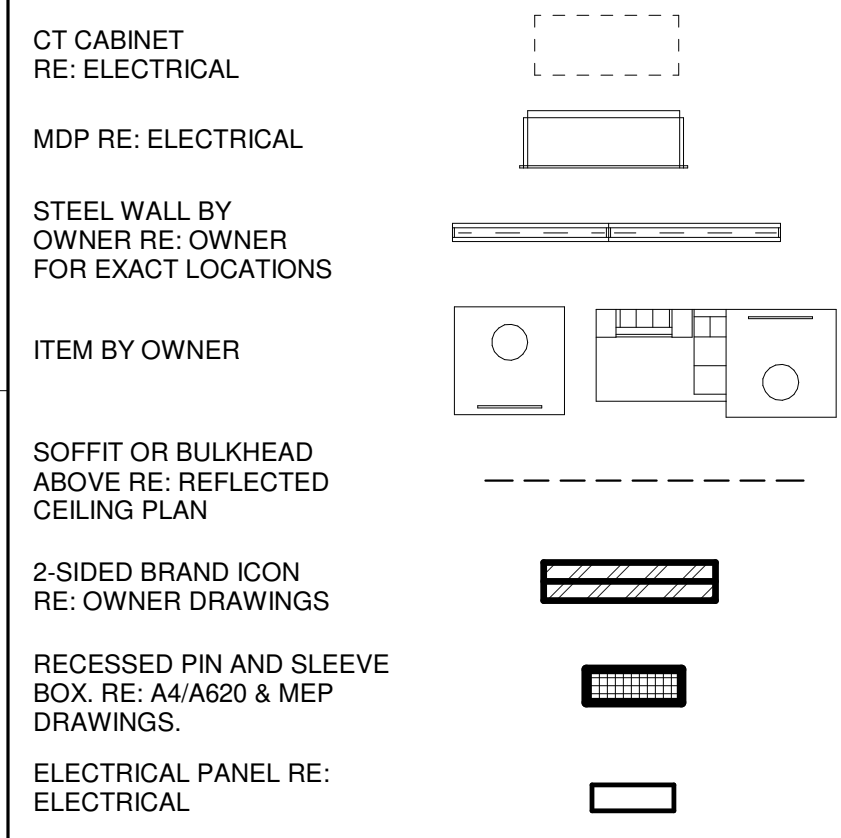


FLOOR PLAN GENERAL NOTES

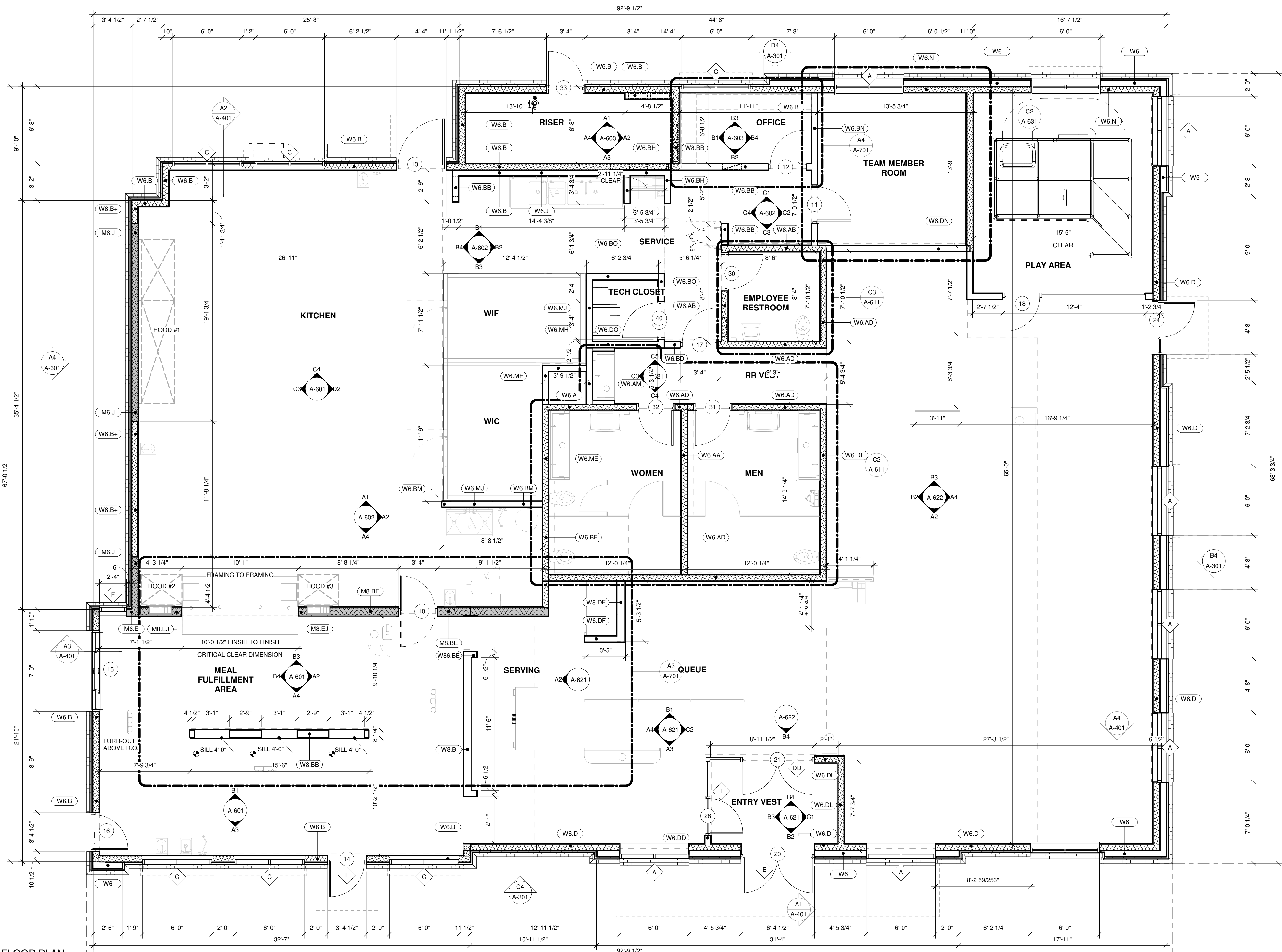
- A.1 ALL DIMENSIONS SHOWN ARE FRAMING DIMENSIONS (FACE OF STUD/JAMB) UNLESS OTHERWISE NOTED.
- A.2 FASTENERS, ANCHORS, CLIPS, STRAPS, ETC WHICH ARE IN CONTACT WITH PRESERVATIVE AND/OR FIRE TREATED WOOD SHALL BE OF G-105 HOT DIPPED ZINC-COATED GALVANIZED STEEL, STAINLESS STEEL, OR AN APPROVED EQUAL.
- A.3 REFER TO CIVIL AND LANDSCAPE FOR LOCATIONS OF WALKS, BOLLARDS, LANDSCAPING AREAS, FLAG POLE, AND OTHER SITE ITEMS.
- A.4 REFER TO INTERIOR ELEVATIONS FOR LOCATIONS AND TYPES OF CORNER GUARDS.
- A.5 CONTRACTOR TO COORDINATE LOCATION OF POLE MOUNTED EXTERIOR CAMERA WITH STRONG SYSTEMS AND INSTALL UNDERGROUND CONDUIT AS REQUIRED. RE: ELECTRICAL.
- A.6 REFER TO ACCESSIBILITY PLAN AND FURNITURE DRAWINGS FOR SEATING LAYOUT & SPECIFICATIONS. CONTACT OWNER.
- A.7 REFER TO ACCESSIBILITY PLAN AND OWNER DRAWINGS FOR CONDIMENT COUNTERS AND TRASH RECEPTACLES.
- A.8 REFER TO IT WALLBOARD USER GUIDE FOR WALLBOARD INSTALLATION, IF APPLICABLE.
- A.9 REFER TO MILLWORK PLAN FOR RAISED CONCRETE CURB LOCATIONS.
- A.10 FREEZER AND COOLER DOORS AND HARDWARE SUPPLIED BY FREEZER/COOLER MANUFACTURER.

FLOOR PLAN LEGEND:



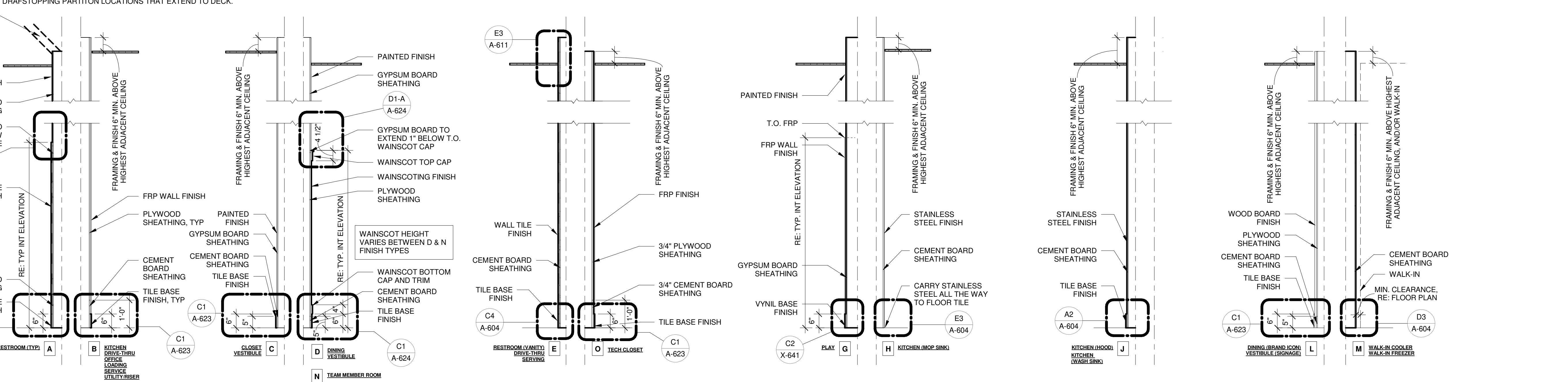
INSULATION SCHEDULE		
LOCATION	R-VALUE	THICKNESS
ROOF	R-17.4	3" RIGID
WALL (CONTINUOUS)	R-5	1" RIGID
WALL (CAVITY)	R-19	6" BATT
SLAB	R-10	2" RIGID

- NOTES:**
- REFER TO FLOOR PLAN AND WALL SECTION SHEETS FOR INSULATION EXTENTS AND LOCATIONS.
 - REFER TO SPECIFICATIONS FOR INSULATION PRODUCT INFORMATION.



B3 FLOOR PLAN

BRACE INTERIOR PARTITIONS AS REQUIRED FOR COMPLIANCE WITH LOCAL BUILDING CODE. REFER TO REFLECTED CEILING PLAN FOR DRAFTSTOPPING PARTITION LOCATIONS THAT EXTEND TO DECK.



- NOTE 1:** WALL BLOCKING SHALL BE THE GENERAL CONTRACTOR'S RESPONSIBILITY. BLOCKING SHALL INCLUDE, BUT IS NOT LIMITED TO: AREAS INDICATED ON INTERIOR ELEVATIONS FOR GRAB BARS, SHELVING BRACKETS, MONITORS, FIXTURES, ETC. AS WELL AS BLOCKING FOR WINDOWS, CANOPIES ROOF FRAMING, ROOF TOP UNITS, ETC.
- NOTE 2:** REFER TO STRUCTURAL DRAWINGS AND WALL SECTIONS FOR EXTERIOR WALL CONSTRUCTION.
- NOTE 3:** REFER TO FINISH PLAN FOR WALL FINISH INFO AND SPECIFICATIONS FOR WALL SHEATHING INFO.
- NOTE 4:** GENERAL CONTRACTOR TO PROVIDE AND/OR VERIFY FIRE BLOCKING AT 10' MAX VERTICAL SPACING AND AT CEILING HEIGHT IN ALL COMBUSTIBLE STUD WALLS, ACCORDING TO LOCAL CODE REQUIREMENTS.

WALL TYPES LEGEND

N.T.S.



Chick-fil-A
Chick-fil-A
 5200 Buffington Road
 Atlanta, Georgia
 30349-2998

SITE ADAPT LOGO AND ADDRESS

PROTOTYPICAL SET

NOT FOR REGULATORY APPROVAL, BIDDING, OR CONSTRUCTION

CHICK-FIL-A
 Hwy 9 & Soper Hill Rd
 8833 Soper Hill Rd.
 Marysville, WA 98270-6882

FSR#05328

BUILDING TYPE / SIZE: P14 SE XP
 RELEASE: 23.05
 PRINTED FOR: PROJECT STATUS
 REVISION SCHEDULE: NO. DATE DESCRIPTION

CONSULTANT PROJECT # SEA22-0053-00
 DATE: 07/19/2023
 DRAWN BY: ME
 Information contained on this drawing and all digital files produced for above named project may not be reproduced in any manner without express written or verbal consent from authorized project representatives.
FLOOR PLAN

7/19/2023 12:46:57 PM Autodesk Docs://WA_05328_Hwy 9 & Soper Hill Rd_2023.3_FSR#05328_Hwy 9 & Soper Hill Rd_ARC.rvt
10-SE-0528-A-301-EXTERIOR ELEVATIONS



Chick-fil-A

Chick-fil-A
5200 Buffington Road
Atlanta, Georgia
30349-2998

SITE
ADAPT
LOGO
AND
ADDRESS

PROTOTYPICAL SET

NOT FOR
REGULATORY
APPROVAL,
BIDDING, OR
CONSTRUCTION

CHICK-FIL-A
Hwy 9 & Soper Hill Rd
8833 Soper Hill Rd.
Marysville, WA 98270-6882

FSR#05328

BUILDING TYPE / SIZE: P14 SE XP
RELEASE: 23.05

PROJECT FOR
PROJECT STATUS

REVISION SCHEDULE

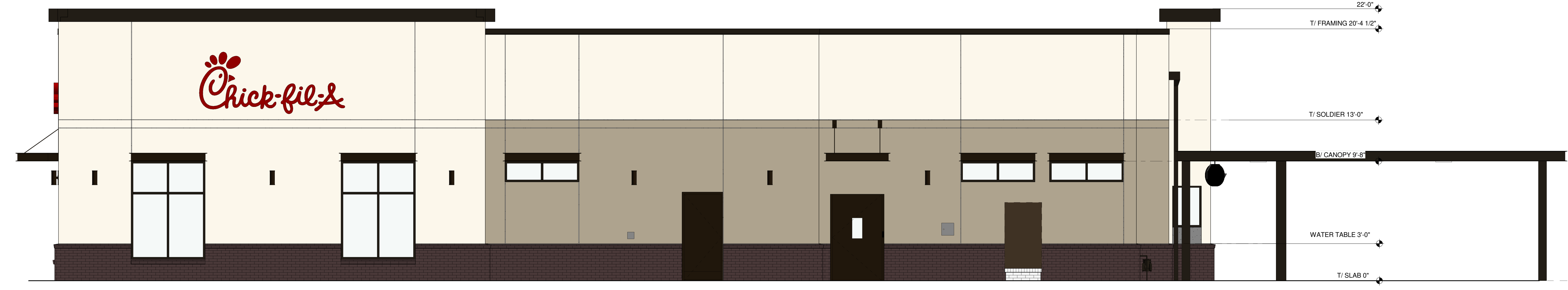
NO.	DATE	DESCRIPTION

CONSULTANT PROJECT # SEA22-0053-00
DATE: 07/19/2023

DRAWN BY: Author
Information contained on this drawing and all digital files produced for above named project may not be reproduced in any manner without express written or verbal consent from author and project representation.

EXTERIOR ELEVATIONS

SHEET NUMBER
A-301



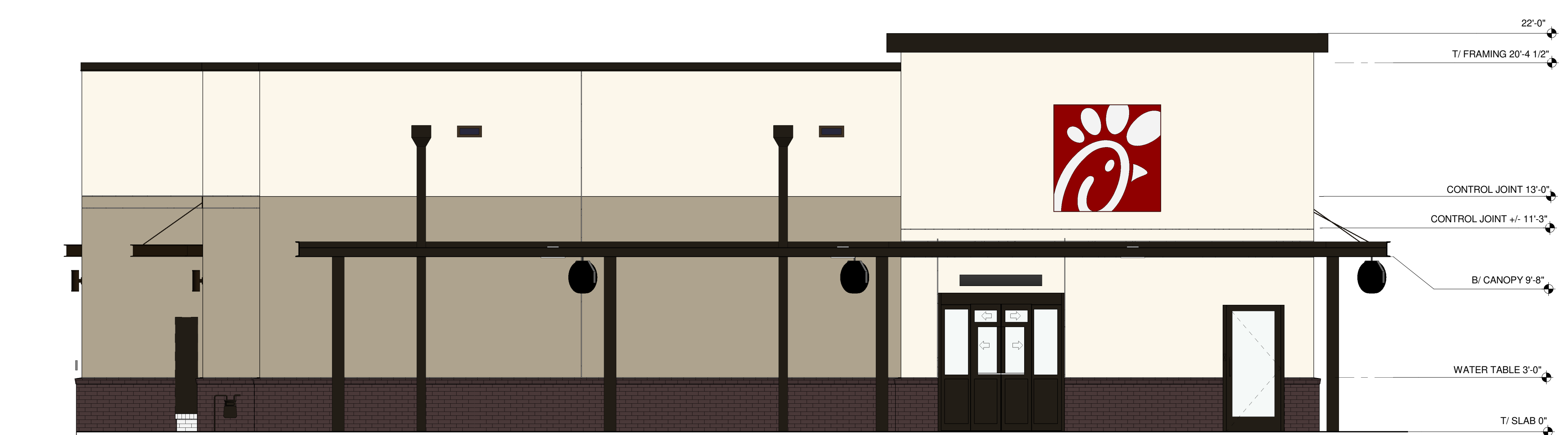
D4 SOUTH ELEVATION
1/4" = 1'-0"



C4 NORTH ELEVATION
1/4" = 1'-0"



B4 WEST ELEVATION
1/4" = 1'-0"



A4 EAST ELEVATION
1/4" = 1'-0"

APPROVED BRICK ALTERNATES
(SEE NATIONAL ACCOUNTS LIST FOR CONTACT INFORMATION)

FINISH	MANUFACTURER	MODEL	MORTAR	PLANT LOCATION	PREFERRED REGION(S)
BR-A (PRIMARY BRICK)					
BR-02	ACME BRICK	PALOMA GRAY	ARGOS, SAN TAN	ELGIN, TX	SOUTHWEST
BR-18	MUTUAL MATERIALS	MIDNIGHT SKY	ARGOS, SAN TAN	MICA, WA	WEST
BR-20	GLEN-GERY	KHAKI MATT	ARGOS, SAN TAN	CHESWICK, PA	ATLANTIC, NORTHEAST, MIDWEST
BR-30	CHEROKEE BRICK	LIGHT GRAY SMOOTH	ARGOS, SAN TAN	MACON, GA	SOUTHEAST
BR-B (ACCENT BRICK)					
BR-03	ACME BRICK	RUSTIC WHITE	ARGOS, SAN TAN	MALVERN, AR	SOUTHWEST
BR-19	MUTUAL MATERIALS	DESERT WHITE	ARGOS, SAN TAN	MICA, WA	WEST
BR-26	GLEN-GERY	WHITEHALL	ARGOS, SAN TAN	CHESWICK, PA	ATLANTIC, NORTHEAST, MIDWEST
BR-31	CHEROKEE BRICK	OATMEAL SMOOTH	ARGOS, SAN TAN	MACON, GA	SOUTHEAST

FINISH SCHEDULE - EXTERIOR

MARK	DESCRIPTION	MANUFACTURER	MODEL NAME	MODEL NUMBER	COLOR	NOTE
BR-A	BRICK VENEER (PRIMARY)		MODULAR			*SEE APPROVED BRICK ALTERNATES
CM-1	WOOD COMPOSITE MATERIAL	RESYSTA INTERNATIONAL	FACADE CLADDING 7CH	RESP340812	CO2, PALE GOLDEN	
CP-1	CANOPY METAL FASCIA		DURA COAT	DC19ST-2703	DARK BRONZE	OIL RUBBED BRONZE METALLIC TEXTURE PVD
CP-2	CANOPY METAL DECK				WHITE	SMOOTH WHITE, HIGH GLOSS
EC-1	PARAPET WALL COPING	DUROLAST / EXCEPTIONAL METALS			MIDNIGHT BRONZE	
MP-1	METAL PANEL	EN-V	HORIZONTAL PANEL STACKED, WITH CORNER WRAP		CARNIVAL RED II HWM	LT726-70CL 70% 3-COAT NON IN-HOUSE BLENDABLE
PT-100	EXTERIOR PAINT	SHERWIN WILLIAMS	SHER-CRYL HIGH PERFORMANCE ACRYLIC #866-350	SW 2807	ROCKWOOD	REFUSE ENCLOSURE - FINISH: SEMI-GLOSS ON DOOR FRAMES, SATIN ON WALLS
PT-113	EXTERIOR PAINT	SHERWIN WILLIAMS	SHER-CRYL HIGH PERFORMANCE ACRYLIC #866-350	SW BRONZETONE	DARK BRONZE	FINISH: SEMI-GLOSS
SC-1	STUCCO	STO	POWERWALL		WEST HIGHLAND WHITE	FINISH: SAND MEDIUM
SC-2	STUCCO	STO	POWERWALL		HARDWARE	FINISH: SAND MEDIUM
ST-1	STOREFRONT	YKK	YES 45		DARK BRONZE (MATTE)	

GENERAL NOTES
1. ALL SIGNAGE PROVIDED BY OTHERS
2. REF FLOOR PLAN AND WINDOW LEGEND FOR STOREFRONT INFORMATION

ATTACHED CANOPY SCHEDULE BN

Mark	Description	Count	Overall Width	Overall Depth	Tie Back Mounting (Offset From Top)	Integral Lighting
C1-C	Exterior Canopy	13	6'-4"	1'-0"	0"	No
C4-B	Exterior Canopy	3	5'-4"	4'-0"	2'-4"	Yes
C4-L	Exterior Canopy	1	28'-0"	5'-0"	2'-4"	Yes
Grand Total		17				

CANOPY NOTES:
BUILDING MOUNTED CANOPIES - 8" THICK CANOPY - KYNAR FINISH OF STRUCTURE, FASCIA, & DECKING TO MATCH (CP-1)
COLUMN MOUNTED CANOPIES - 10" THICK CANOPY - FINISH OF STRUCTURE TO BE (CP-1) - FINISH OF DECKING TO BE (CP-2)

LEGEND

