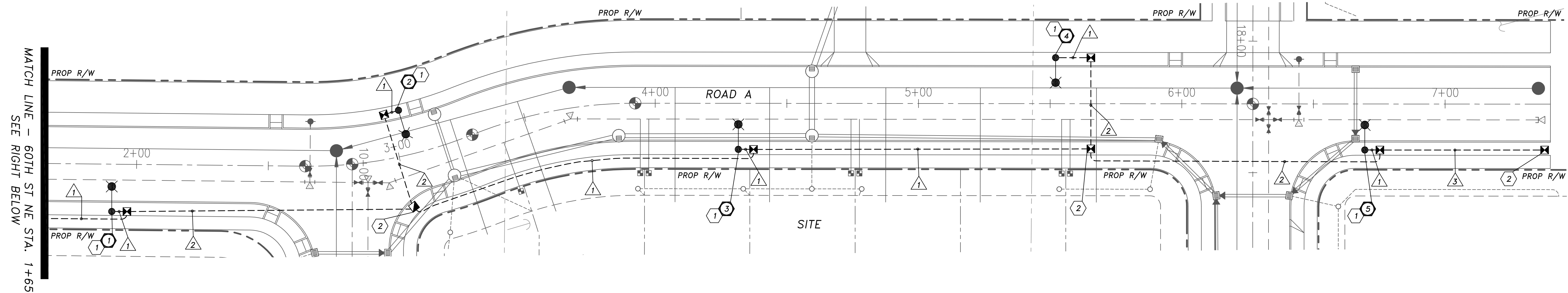


SW 1/4, SECTION 25, TOWNSHIP 30 NORTH, RANGE 5 E., W.M.



ILLUMINATION GENERAL NOTES

1. ALL WORK MATERIALS SHALL BE IN CONFORMANCE WITH THE STANDARDS AND SPECIFICATIONS OF CITY OF MARYSVILLE AND THE LATEST EDITION OF THE WSDOT STANDARDS AND SPECIFICATIONS. A SET OF APPROVED PLANS SHALL BE KEPT ON-SITE AT ALL TIMES DURING CONSTRUCTION.
2. THE JUNCTION BOX AND CONDUIT LOCATIONS SHOWN ARE APPROXIMATE. JUNCTION BOXES SHALL BE PLACED OUTSIDE OF SIDEWALKS UNLESS OTHERWISE NOTED OR DIRECTED BY THE ENGINEER.
3. THE LOCATIONS OF FEATURES AND UTILITIES SHOWN ARE APPROXIMATE AND SHALL BE VERIFIED IN THE FIELD BY THE CONTRACTOR AS NECESSARY.
4. THE CONTRACTOR SHALL SUBMIT A REQUEST TO THE INSPECTOR FOR MATERIALS APPROVAL AT THE EARLIEST POSSIBLE DATE.
5. ALL WORK SHALL BE CONSISTENT WITH UTILITY AGENCY REQUIREMENTS. THE CONTRACTOR SHALL CONTACT ALL PERTINENT UTILITY AGENCIES 48 HOURS BEFORE COMMENCING WORK, AND SHALL COORDINATE WITH AFFECTED UTILITY AGENCIES THROUGHOUT THE PROJECT.
6. THE CONTRACTOR SHALL BE RESPONSIBLE FOR ANY DAMAGE TO EXISTING UTILITIES. THE CONTRACTOR SHALL NOTIFY THE AFFECTED UTILITY COMPANY AND CITY OF MARYSVILLE IMMEDIATELY UPON DAMAGE.
7. AS PART OF THE DESIGN PROCESS, THE ENGINEER HAS ATTEMPTED TO CONFIRM THAT THERE ARE NOT CONFLICTS WITH OVERHEAD POWER LINES OR SUBSURFACE UTILITIES. HOWEVER, IT IS POSSIBLE FOR THE EXISTING OR PROPOSED CONDITIONS TO CHANGE PRIOR TO IMPLEMENTATION OF THE SCOPE OF WORK IDENTIFIED ON THESE DOCUMENTS. AS THE FIRST ORDER OF BUSINESS, THE CONTRACTOR SHALL CONFIRM THAT THERE ARE NOT CONFLICTS WITH SUBSURFACE UTILITIES. ADDITIONALLY, THE CONTRACTOR SHALL CONFIRM THAT THERE IS A MINIMUM 10-FT CLEARANCE PROVIDED BETWEEN OVERHEAD POWER LINES AND THE PROPOSED LUMINAIRE POLES PRIOR TO POLE PLACEMENT. ADDITIONAL CLEARANCE MAY BE REQUIRED AS DIRECTED BY THE UTILITY. THE CONTRACTOR SHALL CONTACT THE ENGINEER IMMEDIATELY IF A CONFLICT IS DISCOVERED.

ILLUMINATION CONSTRUCTION NOTES

1. CONSTRUCT TYPE A FOUNDATION PER WSDOT STD. PLAN J-28.30. FURNISH AND INSTALL DECORATIVE LUMEC STREET LIGHT POLE, LUMEC ARM, AND NEW LUMEC RENAISSANCE FIXTURE PER CITY OF MARYSVILLE STANDARD PLAN 3-506-001 AND ILLUMINATION POLE SCHEDULE, THIS SHEET. FURNISH AND INSTALL TYPE I JUNCTION BOX PER WSDOT STD. PLAN J-40.10.
2. FURNISH AND INSTALL NEW JUNCTION BOX PER WSDOT STD. PLAN J-40.10.
3. ILLUMINATION POLE SHOWN FOR REFERENCE ONLY. ILLUMINATION POLE AND FOUNDATION SHALL BE INSTALLED BY OTHERS.
4. CONSTRUCT FOUNDATION FOR TYPE D SERVICE CABINET PER WSDOT STD. PLAN J-10.10. FURNISH AND INSTALL NEW TYPE D SERVICE CABINET PER WSDOT STD. PLAN J-10.21.
5. THE POWER SOURCE LOCATION WAS NOT KNOWN AT THE TIME OF PLAN PREPARATION. THE CONTRACTOR SHALL COORDINATE WITH SNOHOMISH PUD TO IDENTIFY A LOCATION FOR 120/240 VOLT SINGLE PHASE POWER SOURCE CONNECTION INCLUDING COMPLETING ALL FORMS/APPLICATIONS AND PAYMENT OF ALL ASSOCIATED FEES. POWER SOURCE COORDINATION SHALL OCCUR PRIOR TO THE START OF CONSTRUCTION. THE CONTRACTOR SHALL INSTALL CONDUIT AND CONDUCTORS TO THE POWER SOURCE. CONTRACTOR SHALL COORDINATE WITH SNOHOMISH PUD FOR SPECIFIC REQUIREMENTS. SNOHOMISH PUD SHALL MAKE FINAL CONNECTION TO THE POWER SOURCE. THE POWER SOURCE SHALL BE WITHIN 200' OF THE SERVICE CABINET. SHOULD SNOHOMISH PUD IDENTIFY A POWER SOURCE FURTHER THAN 200' AWAY, THEN THE SERVICE CABINET LOCATION SHALL BE MOVED ACCORDINGLY.

SERVICE BREAKER SCHEDULE

CIRCUIT	BREAKER	CONTACTOR
MAIN	2P-100 AMP	---
ILLUM A	2P-20 AMP	30 AMP
ILLUM B	2P-20 AMP	30 AMP

ILLUMINATION WIRING SCHEDULE

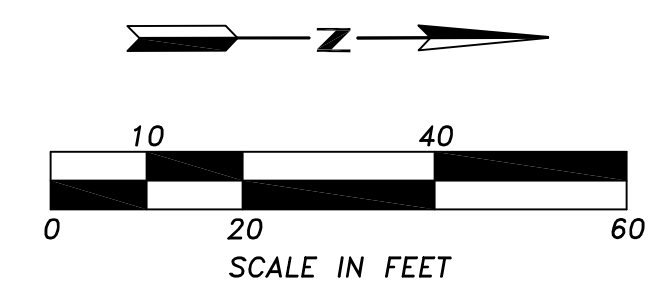
NO.	RACEWAY CONDUIT SIZE	ILLUM. #8	PULL WIRE	EQUIP. GRND.
1	2" SCH40 PVC	2		1
2	2" SCH80 PVC	2		1
3	2" SCH40 PVC SPARE		1	

* EQUIPMENT GROUND SIZE SHALL BE EQUAL TO OR LARGER THAN THE LARGEST WIRE SIZE IN THE CONDUIT.

ILLUMINATION POLE SCHEDULE

LUM. POLE NO.	STREET	STATION*	OFFSET*	MOUNTING HEIGHT	ARM LENGTH	SERVICE/CIRCUIT	WATTAGE/TYPE	LUMINAIRE TYPE	POLE, ARM TYPE	COMMENT
1	ROAD A	1+90.5	18.0' RT	25'	2.5'	ILLUM A	90 LED	LUMEC RN20-90WB0LED4K-R-LE3R	LUMEC SSM8V-25-BRTX, LUMEC NM1A-RNA-BRTX	INSTALL TYPE A FOUNDATION PER WSDOT STD. PLAN J-28.30.
2	ROAD A	3+03.5	17.5' LT	25'	2.5'	ILLUM A	90 LED	LUMEC RN20-90WB0LED4K-R-LE3R	LUMEC SSM8V-25-BRTX, LUMEC NM1A-RNA-BRTX	INSTALL TYPE A FOUNDATION PER WSDOT STD. PLAN J-28.30.
3	ROAD A	4+31.5	17.5' RT	25'	2.5'	ILLUM A	90 LED	LUMEC RN20-90WB0LED4K-R-LE3R	LUMEC SSM8V-25-BRTX, LUMEC NM1A-RNA-BRTX	INSTALL TYPE A FOUNDATION PER WSDOT STD. PLAN J-28.30.
4	ROAD A	5+52.0	17.5' LT	25'	2.5'	ILLUM A	90 LED	LUMEC RN20-90WB0LED4K-R-LE3R	LUMEC SSM8V-25-BRTX, LUMEC NM1A-RNA-BRTX	INSTALL TYPE A FOUNDATION PER WSDOT STD. PLAN J-28.30.
5	ROAD A	6+69.5	17.5' RT	25'	2.5'	ILLUM A	90 LED	LUMEC RN20-90WB0LED4K-R-LE3R	LUMEC SSM8V-25-BRTX, LUMEC NM1A-RNA-BRTX	INSTALL TYPE A FOUNDATION PER WSDOT STD. PLAN J-28.30.
6	60TH ST NE	21+87.5	21.5' LT	25'	2.5'	ILLUM B	90 LED	LUMEC RN20-90WB0LED4K-R-LE3R	LUMEC SSM8V-25-BRTX, LUMEC NM1A-RNA-BRTX	INSTALL TYPE A FOUNDATION PER WSDOT STD. PLAN J-28.30.
7	60TH ST NE	25+38.0	21.5' LT	25'	2.5'	ILLUM B	90 LED	LUMEC RN20-90WB0LED4K-R-LE3R	LUMEC SSM8V-25-BRTX, LUMEC NM1A-RNA-BRTX	INSTALL TYPE A FOUNDATION PER WSDOT STD. PLAN J-28.30.

* STATIONS/OFFSETS ARE APPROXIMATE. CONTRACTOR SHALL CONFIRM ADJUSTMENTS WITH CITY INSPECTOR PRIOR TO IMPLEMENTING.

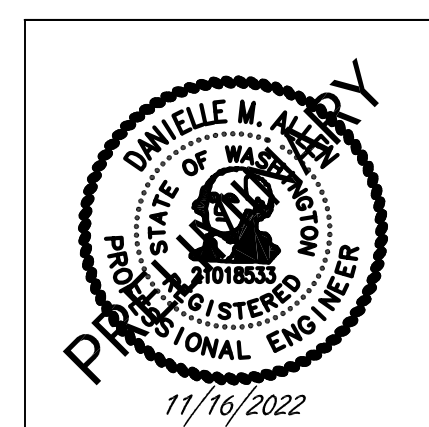


ILLUMINATION LEGEND

NEW	DESCRIPTION
[Symbol]	JUNCTION BOX TYPE 1
[Symbol]	STREET LIGHT POLE
[Symbol]	FUTURE STREET LIGHT POLE
[Symbol]	SERVICE CABINET
[Symbol]	CONDUIT/CONDUCTOR
[Symbol]	ILLUMINATION POLE NUMBER
[Symbol]	CONSTRUCTION NOTE
[Symbol]	WIRE NOTE

REVISION	DATE	BY

DESIGNED BY: DMA	ISSUE DATE: 11-16-2022
DRAWN BY: CT	JOB NO.: TENW #2022-372
APPROVED BY: CTB	DRAWING FILE NO.:



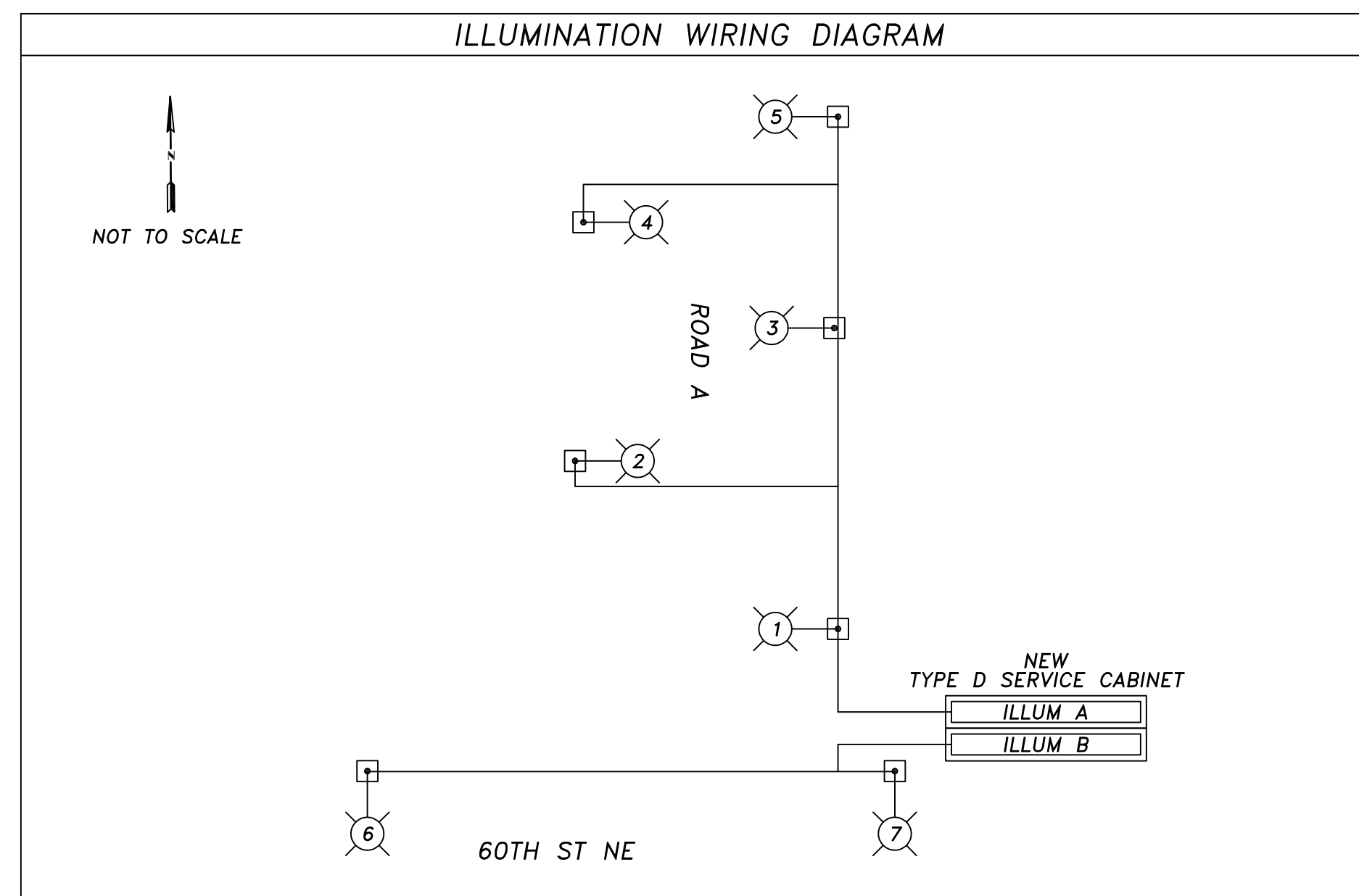
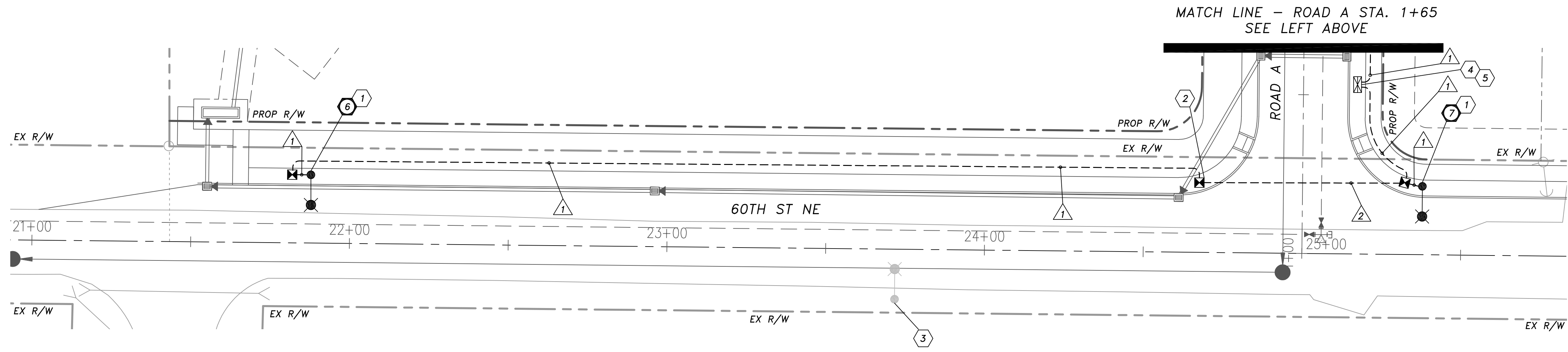
TENW
 Transportation Engineering NorthWest
 Transportation Planning | Design | Traffic Impact & Operations
 11400 SE 8th St, Suite 200, Bellevue, WA 98004 | Office (425) 889-6747
 Project Contact: Danielle Allen, P.E.
 Phone: 425-250-0584

LAND PRO GROUP, LLC
 10515 20TH STREET SE, SUITE 202
 LAKE STEVENS, WA 98258
 360-926-6770
 RSMITH@LANDPROGRP.COM
 ROCHELLE SMITH

BRODIE MARYSVILLE
ILLUMINATION PLAN

DRAWING NO.:	IL-01
SHEET NO.:	1
OF	3
SHEETS	

SW 1/4, SECTION 25, TOWNSHIP 30 NORTH, RANGE 5 E., W.M.



NO.	RACEWAY CONDUIT SIZE	ILLUM. #8	PULL WIRE	EQUIP. GRND.
1	2" SCH40 PVC	2		1
2	2" SCH80 PVC	2		1
3	2" SCH40 PVC SPARE		1	
3	2" SCH40 PVC SPARE		1	

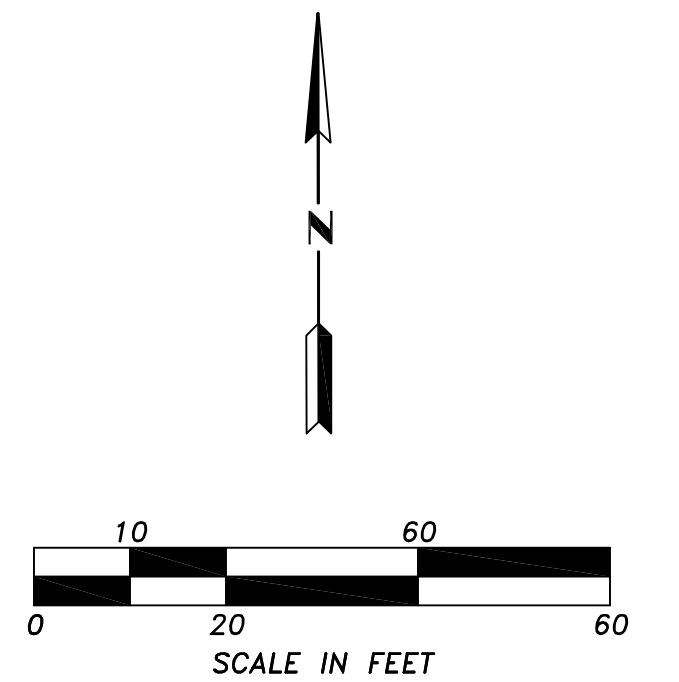
* EQUIPMENT GROUND SIZE SHALL BE EQUAL TO OR LARGER THAN THE LARGEST WIRE SIZE IN THE CONDUIT.

LUM. POLE NO.	STREET	STATION*	OFFSET*	MOUNTING HEIGHT	ARM LENGTH	SERVICE/CIRCUIT	WATTAGE/TYPE	LUMINAIRE TYPE	POLE, ARM TYPE	COMMENT
1	ROAD A	1+90.5	18.0' RT	25'	2.5'	ILLUM A	90 LED	LUMEC RN20-90W80LED4K-R-LE3R	LUMEC SSM8V-25-BRTX, LUMEC NM1A-RNA-BRTX	INSTALL TYPE A FOUNDATION PER WSDT STD. PLAN J-28.30.
2	ROAD A	3+03.5	17.5' LT	25'	2.5'	ILLUM A	90 LED	LUMEC RN20-90W80LED4K-R-LE3R	LUMEC SSM8V-25-BRTX, LUMEC NM1A-RNA-BRTX	INSTALL TYPE A FOUNDATION PER WSDT STD. PLAN J-28.30.
3	ROAD A	4+31.5	17.5' RT	25'	2.5'	ILLUM A	90 LED	LUMEC RN20-90W80LED4K-R-LE3R	LUMEC SSM8V-25-BRTX, LUMEC NM1A-RNA-BRTX	INSTALL TYPE A FOUNDATION PER WSDT STD. PLAN J-28.30.
4	ROAD A	5+52.0	17.5' LT	25'	2.5'	ILLUM A	90 LED	LUMEC RN20-90W80LED4K-R-LE3R	LUMEC SSM8V-25-BRTX, LUMEC NM1A-RNA-BRTX	INSTALL TYPE A FOUNDATION PER WSDT STD. PLAN J-28.30.
5	ROAD A	6+69.5	17.5' RT	25'	2.5'	ILLUM A	90 LED	LUMEC RN20-90W80LED4K-R-LE3R	LUMEC SSM8V-25-BRTX, LUMEC NM1A-RNA-BRTX	INSTALL TYPE A FOUNDATION PER WSDT STD. PLAN J-28.30.
6	60TH ST NE	21+87.5	21.5' LT	25'	2.5'	ILLUM B	90 LED	LUMEC RN20-90W80LED4K-R-LE3R	LUMEC SSM8V-25-BRTX, LUMEC NM1A-RNA-BRTX	INSTALL TYPE A FOUNDATION PER WSDT STD. PLAN J-28.30.
7	60TH ST NE	25+38.0	21.5' LT	25'	2.5'	ILLUM B	90 LED	LUMEC RN20-90W80LED4K-R-LE3R	LUMEC SSM8V-25-BRTX, LUMEC NM1A-RNA-BRTX	INSTALL TYPE A FOUNDATION PER WSDT STD. PLAN J-28.30.

* STATIONS/OFFSETS ARE APPROXIMATE. CONTRACTOR SHALL CONFIRM ADJUSTMENTS WITH CITY INSPECTOR PRIOR TO IMPLEMENTING.

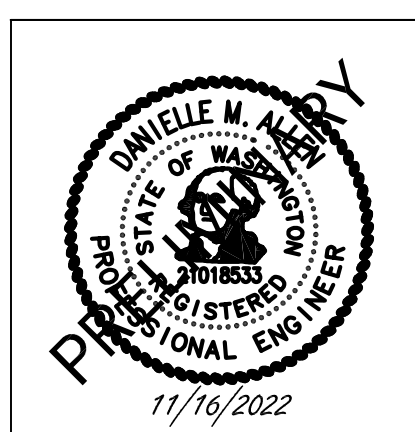
ILLUMINATION CONSTRUCTION NOTES

- CONSTRUCT TYPE A FOUNDATION PER WSDOT STD. PLAN J-28.30. FURNISH AND INSTALL DECORATIVE LUMEC STREET LIGHT POLE, LUMEC ARM, AND NEW LUMEC RENAISSANCE FIXTURE PER CITY OF MARYSVILLE STANDARD PLAN 3-506-001 AND ILLUMINATION POLE SCHEDULE, THIS SHEET. FURNISH AND INSTALL TYPE I JUNCTION BOX PER WSDOT STD. PLAN J-40.10.
- FURNISH AND INSTALL NEW JUNCTION BOX PER WSDOT STD. PLAN J-40.10.
- ILLUMINATION POLE SHOWN FOR REFERENCE ONLY. ILLUMINATION POLE AND FOUNDATION SHALL BE INSTALLED BY OTHERS.
- CONSTRUCT FOUNDATION FOR TYPE D SERVICE CABINET PER WSDOT STD. PLAN J-10.10. FURNISH AND INSTALL NEW TYPE D SERVICE CABINET PER WSDOT STD. PLAN J-10.21.
- THE POWER SOURCE LOCATION WAS NOT KNOWN AT THE TIME OF PLAN PREPARATION. THE CONTRACTOR SHALL COORDINATE WITH SNOHOMISH PUD TO IDENTIFY A LOCATION FOR 120/240 VOLT SINGLE PHASE POWER SOURCE CONNECTION INCLUDING COMPLETING ALL FORMS/APPLICATIONS AND PAYMENT OF ALL ASSOCIATED FEES. POWER SOURCE COORDINATION SHALL OCCUR PRIOR TO THE START OF CONSTRUCTION. THE CONTRACTOR SHALL INSTALL CONDUIT AND CONDUCTORS TO THE POWER SOURCE. CONTRACTOR SHALL COORDINATE WITH SNOHOMISH PUD FOR SPECIFIC REQUIREMENTS. SNOHOMISH PUD SHALL MAKE FINAL CONNECTION TO THE POWER SOURCE. THE POWER SOURCE SHALL BE WITHIN 200' OF THE SERVICE CABINET. SHOULD SNOHOMISH PUD IDENTIFY A POWER SOURCE FURTHER THAN 200' AWAY, THEN THE SERVICE CABINET LOCATION SHALL BE MOVED ACCORDINGLY.



NEW	DESCRIPTION
[Symbol]	JUNCTION BOX TYPE 1
[Symbol]	STREET LIGHT POLE
[Symbol]	FUTURE STREET LIGHT POLE
[Symbol]	SERVICE CABINET
[Symbol]	CONDUIT/CONDUCTOR
[Symbol]	ILLUMINATION POLE NUMBER
[Symbol]	CONSTRUCTION NOTE
[Symbol]	WIRE NOTE

REVISION	DATE	BY	DESIGNED BY:	ISSUE DATE:
			DMA	11-16-2022
			DRAWN BY:	JOB NO.:
			CT	TENW #2022-372
			APPROVED BY:	DRAWING FILE NO.:
			CTB	



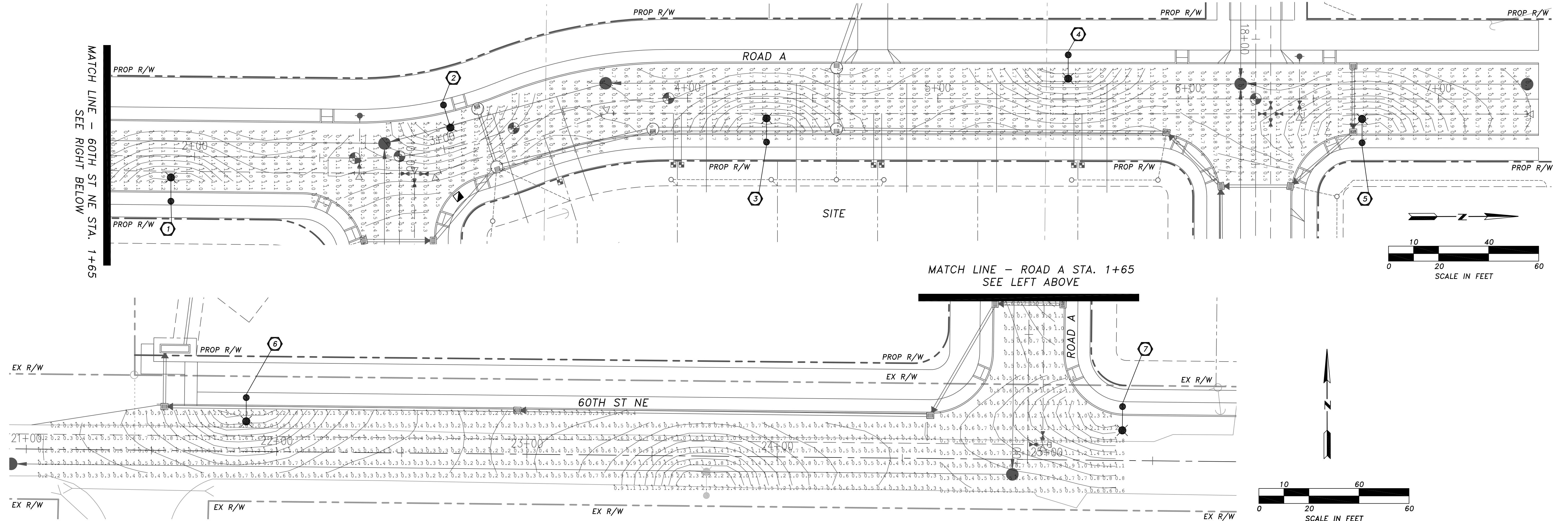
TENW
 Transportation Engineering NorthWest
 Transportation Planning | Design | Traffic Impact & Operations
 11400 SE 8th St, Suite 200, Bellevue, WA 98004 | Office (425) 889-6747
 Project Contact: Danielle Allen, P.E.
 Phone: 425-250-0584

LAND PRO GROUP, LLC
 10515 20TH STREET SE, SUITE 202
 LAKE STEVENS, WA 98258
 360-926-6770
 RSMITH@LANDPROGRP.COM
 ROCHELLE SMITH

BRODIE MARYSVILLE
 ILLUMINATION PLAN

DRAWING NO.:	IL-02
SHEET NO.:	2
OF	3
SHEETS	

SW 1/4, SECTION 25, TOWNSHIP 30 NORTH, RANGE 5 E., W.M.



CALCULATION AREA	DESIGN CRITERIA		TARGET	ACTUAL
	AVG. MAINTAINED FOOT CANDLES	UNIFORMITY RATIO AVG. FC/ MIN. FC		
ROAD A (COLLECTOR ARTERIAL)	0.60 ⁽¹⁾	4.00:1 ⁽¹⁾		3.37:1
60TH ST NE (NEIGHBORHOOD COLLECTOR)	0.20 ⁽¹⁾	6.00:1 ⁽¹⁾		3.65:1
60TH ST NE & ROAD A (INTERSECTION)	0.90 ⁽¹⁾	4.00:1 ⁽¹⁾		3.03:1
ROAD A & INTERNAL ROADS (INTERSECTION)	0.90 ⁽¹⁾	4.00:1 ⁽¹⁾		2.93:1

(1) PER CITY OF MARYSVILLE ENGINEERING DESIGN AND DEVELOPMENT STANDARDS, TABLE 3-5.01.

ILLUMINATION POLE SCHEDULE										
LUM. POLE NO.	STREET	STATION*	OFFSET*	MOUNTING HEIGHT	ARM LENGTH	SERVICE/CIRCUIT	WATTAGE/TYPE	LUMINAIRE TYPE	POLE, ARM TYPE	COMMENT
1	ROAD A	1+90.5	18.0' RT	25'	2.5'	ILLUM A	90 LED	LUMEC RN20-90WBOLED4K-R-LE3R	LUMEC SSM8V-25-BRTX, LUMEC NM1A-RNA-BRTX	INSTALL TYPE A FOUNDATION PER WSDT STD. PLAN J-28.30.
2	ROAD A	3+03.5	17.5' LT	25'	2.5'	ILLUM A	90 LED	LUMEC RN20-90WBOLED4K-R-LE3R	LUMEC SSM8V-25-BRTX, LUMEC NM1A-RNA-BRTX	INSTALL TYPE A FOUNDATION PER WSDT STD. PLAN J-28.30.
3	ROAD A	4+31.5	17.5' RT	25'	2.5'	ILLUM A	90 LED	LUMEC RN20-90WBOLED4K-R-LE3R	LUMEC SSM8V-25-BRTX, LUMEC NM1A-RNA-BRTX	INSTALL TYPE A FOUNDATION PER WSDT STD. PLAN J-28.30.
4	ROAD A	5+52.0	17.5' LT	25'	2.5'	ILLUM A	90 LED	LUMEC RN20-90WBOLED4K-R-LE3R	LUMEC SSM8V-25-BRTX, LUMEC NM1A-RNA-BRTX	INSTALL TYPE A FOUNDATION PER WSDT STD. PLAN J-28.30.
5	ROAD A	6+69.5	17.5' RT	25'	2.5'	ILLUM A	90 LED	LUMEC RN20-90WBOLED4K-R-LE3R	LUMEC SSM8V-25-BRTX, LUMEC NM1A-RNA-BRTX	INSTALL TYPE A FOUNDATION PER WSDT STD. PLAN J-28.30.
6	60TH ST NE	21+87.5	21.5' LT	25'	2.5'	ILLUM B	90 LED	LUMEC RN20-90WBOLED4K-R-LE3R	LUMEC SSM8V-25-BRTX, LUMEC NM1A-RNA-BRTX	INSTALL TYPE A FOUNDATION PER WSDT STD. PLAN J-28.30.
7	60TH ST NE	25+38.0	21.5' LT	25'	2.5'	ILLUM B	90 LED	LUMEC RN20-90WBOLED4K-R-LE3R	LUMEC SSM8V-25-BRTX, LUMEC NM1A-RNA-BRTX	INSTALL TYPE A FOUNDATION PER WSDT STD. PLAN J-28.30.

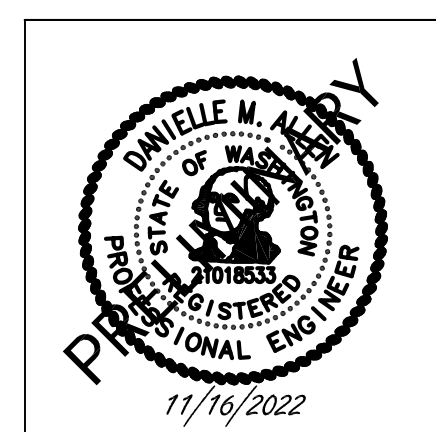
* STATIONS/OFFSETS ARE APPROXIMATE. CONTRACTOR SHALL CONFIRM ADJUSTMENTS WITH CITY INSPECTOR PRIOR TO IMPLEMENTING.

ILLUMINATION LEGEND	
NEW	DESCRIPTION
	STREET LIGHT POLE
	STREET LIGHT POLE
	ILLUMINATION POLE NUMBER

NOTE: THE CONTRACTOR SHALL VERIFY THE LOCATION OF ALL EXISTING UTILITIES PRIOR TO ANY CONSTRUCTION. AGENCIES INVOLVED SHALL BE NOTIFIED WITHIN A REASONABLE TIME PRIOR TO THE START OF CONSTRUCTION.

REVISION	DATE	BY

DESIGNED BY: DMA	ISSUE DATE: 11-16-2022
DRAWN BY: CT	JOB NO.: TENW #2022-372
APPROVED BY: CTB	DRAWING FILE NO.:



TENW
 Transportation Engineering NorthWest
 Transportation Planning | Design | Traffic Impact & Operations
 11400 SE 8th St, Suite 200, Bellevue, WA 98004 | Office (425) 889-6747
 Project Contact: Danielle Allen, P.E.
 Phone: 425-250-0584

LAND PRO GROUP, LLC
 10515 20TH STREET SE, SUITE 202
 LAKE STEVENS, WA 98258
 360-926-6770
 RSMITH@LANDPROGRP.COM
 ROCHELLE SMITH

BRODIE MARYSVILLE

PHOTOMETRIC CALCULATIONS

DRAWING NO.:	IL-03
SHEET NO.:	3
OF	3
SHEETS	