

PRELIMINARY SITE PLAN
FOR
CHICK-FIL-A MARYSVILLE
SECTION 21, TWP. 30 N., RGE 5 EAST, W. M.
CITY OF MARYSVILLE, SNOHOMISH COUNTY, STATE OF WASHINGTON

LEGEND:

PROPOSED	
CURB AND GUTTER	
BARRIER CURB	
PAINT STRIPE	
WSDOT IMPROVEMENTS	
EXISTING	
CURB	
PAINT STRIPE	
CONCRETE	
BUILDING LINE	
CURB TO BE DEMOLISHED	
CONCRETE TO BE DEMOLISHED	

PARKING COUNT:

REQUIRED: 1 PER 75 SF GFA
4,315 SF / 75 = 57.5 = 58

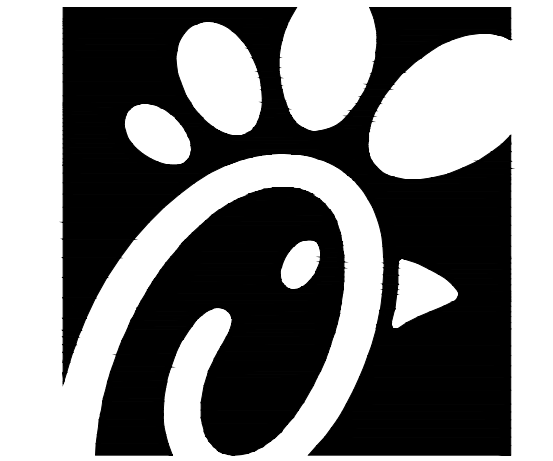
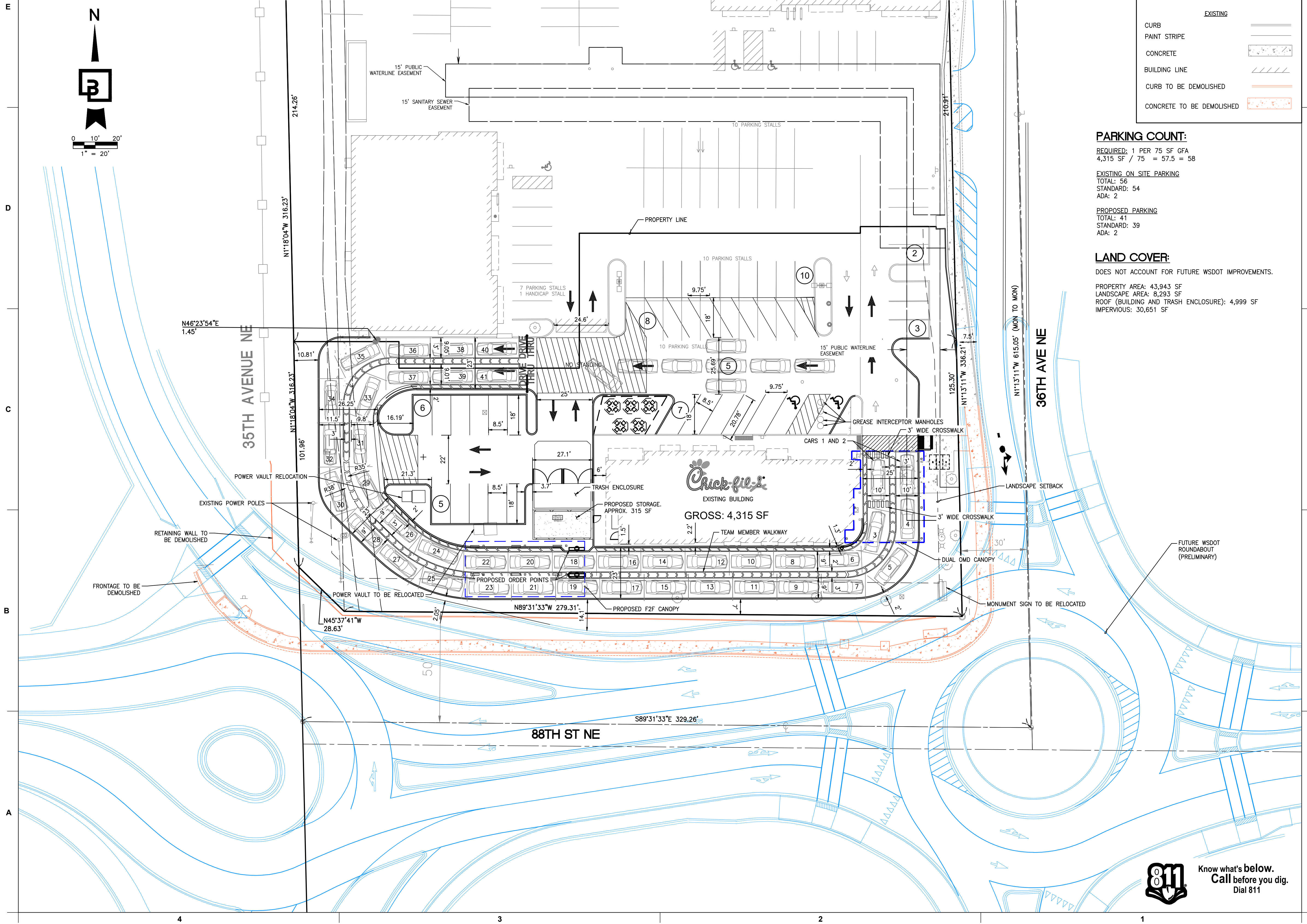
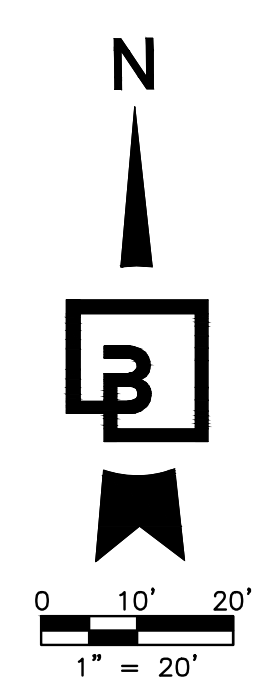
EXISTING ON SITE PARKING
TOTAL: 56
STANDARD: 54
ADA: 2

PROPOSED PARKING
TOTAL: 41
STANDARD: 39
ADA: 2

LAND COVER:

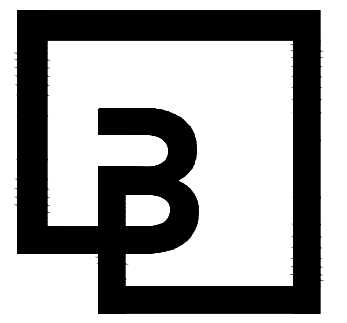
DOES NOT ACCOUNT FOR FUTURE WSDOT IMPROVEMENTS.

PROPERTY AREA: 43,943 SF
LANDSCAPE AREA: 8,293 SF
ROOF (BUILDING AND TRASH ENCLOSURE): 4,999 SF
IMPERVIOUS: 30,651 SF



Chick-fil-A

Chick-fil-A
5200 Buffington Road
Atlanta, Georgia 30349-2998



Barghausen Consulting Engineers, Inc.

18215 72nd Avenue South
Kent, WA 98032
425.251.6222
barghausen.com

CHICK-FIL-A
MARYSVILLE, WA

8810 36TH AVE NE
MARYSVILLE, WA 98270

FSR#03988

BUILDING TYPE / SIZE:
RELEASE:

REVISION SCHEDULE

NO.	DATE	DESCRIPTION

CONSULTANT PROJECT # 17520
PRINTED FOR PRELIM SITE PLAN REV
DATE 8/26/2021
DRAWN BY MAM

Information contained on this drawing and in all digital files produced for above named project may not be reproduced in any manner without express written or verbal consent from authorized project representatives.
SHEET PRELIMINARY SITE PLAN

SHEET NUMBER

C1

FOR CLIENT REVIEW



Know what's below.
Call before you dig.
Dial 811