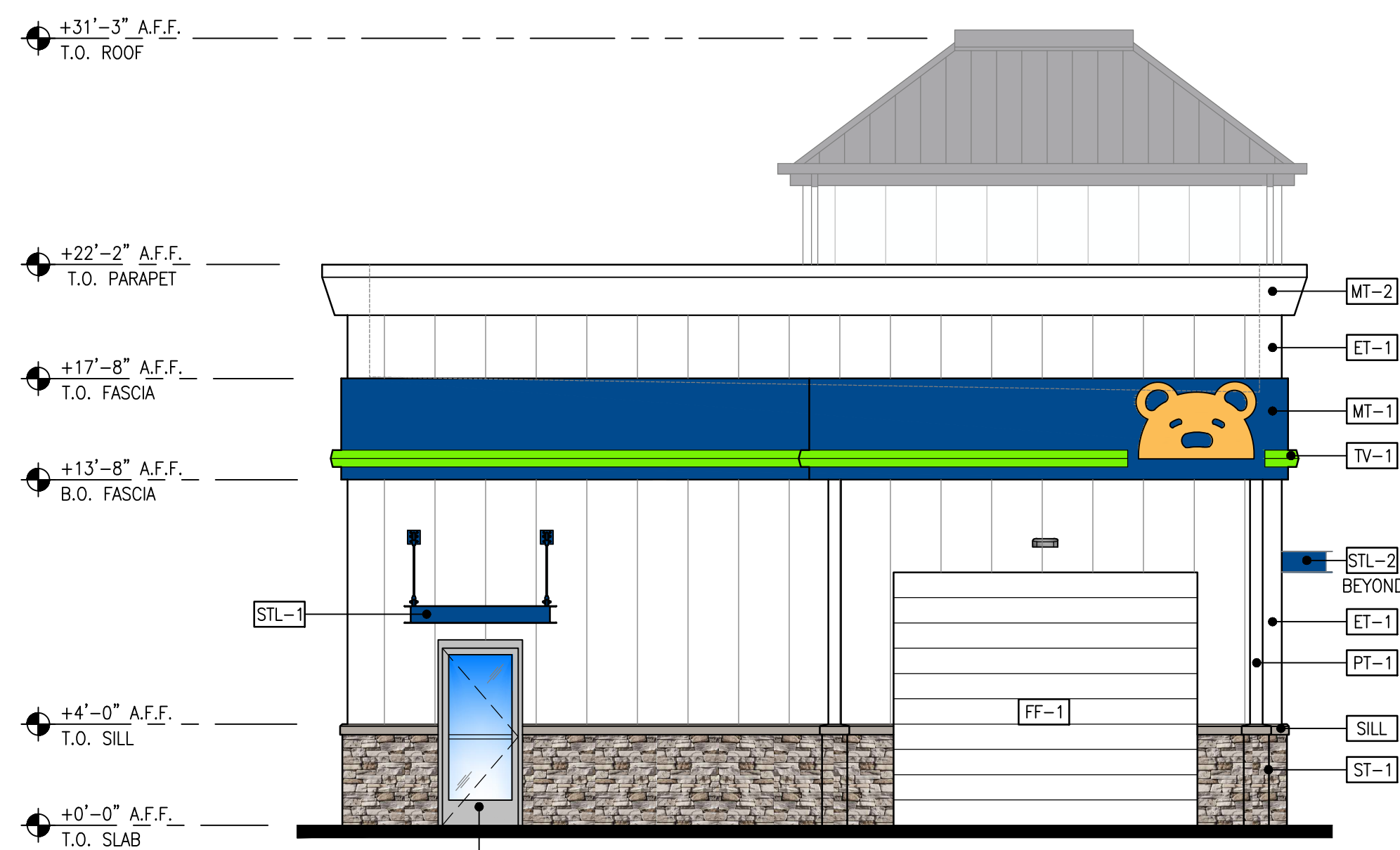




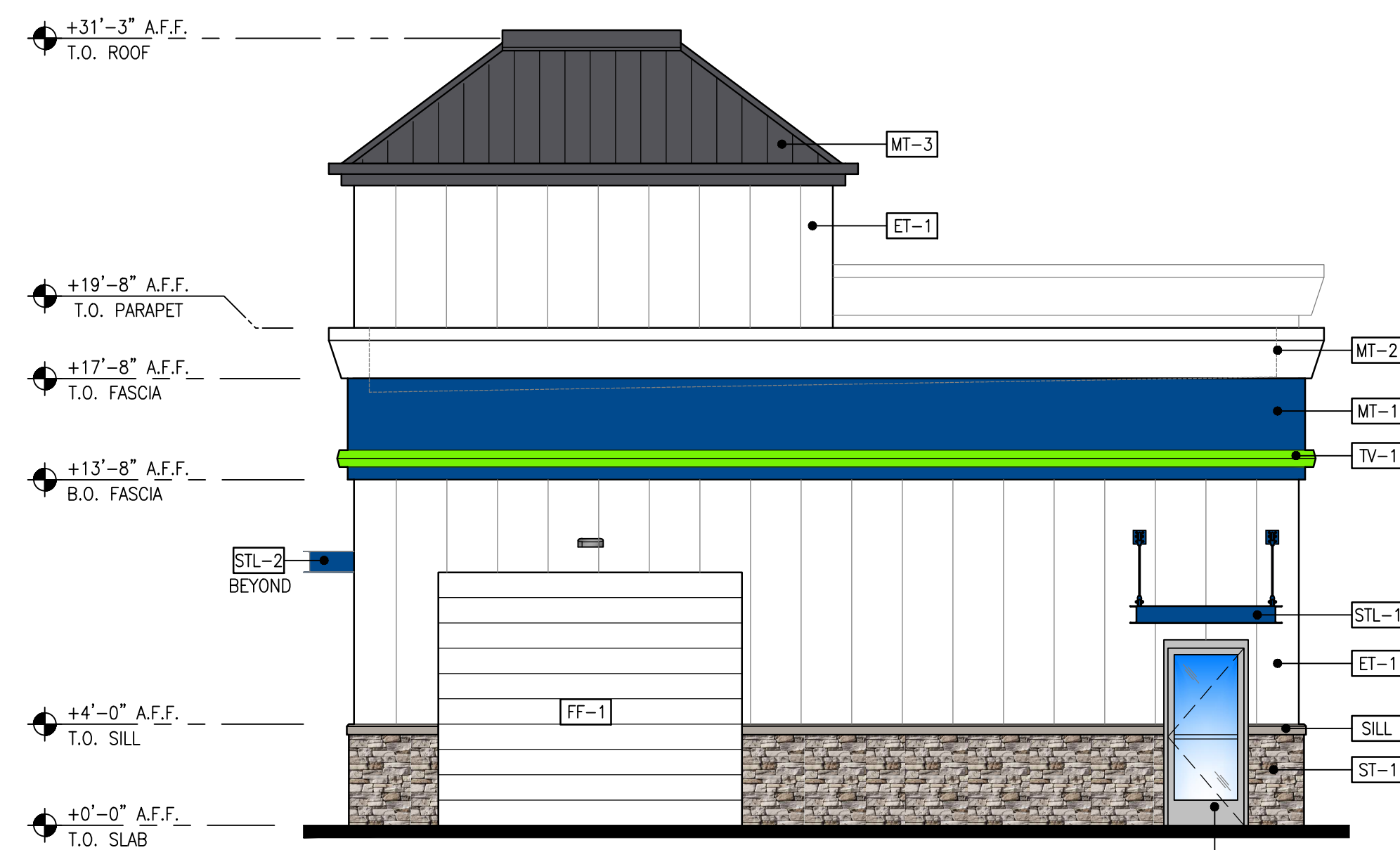
01 EAST ELEVATION  
CWA2.1 SCALE: 3/16"=1'-0"



02 WEST ELEVATION  
CWA2.1 SCALE: 3/16"=1'-0"



03 SOUTH ELEVATION  
CWA2.1 SCALE: 3/16"=1'-0"



04 NORTH ELEVATION  
CWA2.1 SCALE: 3/16"=1'-0"

**MATERIAL & COLOR LEGEND**

- AL-1 CLEAR ANODIZED STOREFRONT DOOR AND WINDOWS
- ET-1 EXTRUTECH PVC PANEL SYSTEM COLOR: GLOSS WHITE
- FF-1 STEEL ROLL-UP DOOR COLOR: FACTORY FINISH WHITE FRAME COLOR PT-1
- MT-1 METAL FASCIA MFR: ALPOLIC, OR EQUAL COLOR: BLUE
- MT-2 METAL FASCIA MFR: ALPOLIC, OR EQUAL COLOR: WHITE TO MATCH PT-1
- MT-3 METAL ROOFING MFR: NU RAY COLOR: WEATHERED COPPER SR1-27
- PT-1 EXTERIOR PAINT MFR: SHERWIN WILLIAMS COLOR: SW7006 EXTRA WHITE
- ST-1 STONE VENEER MFR: ELORADO STONE STYLE: CLIFFSTONE COLOR: BOARDWALK
- STL-1 STEEL CANOPY, PAINT BLUE
- STL-2 STEEL EYEBROW CANOPY, PAINT BLUE
- SILL STONE SILL PER MANUFACTURER ABOVE
- TV-1 HORIZONTAL ILLUMINATED CHANNEL TRIM COLOR: GREEN AKZO 443C5 WITH BRILLIANT GREEN TRANSLUCENT VINYL

Revision  
Appr.  
Ckd.  
By  
Date  
No.

Title:  
CAR WASH ELEVATIONS  
BROWN BEAR CAR WASH  
SR 9 & SOPER HILL RD (LOTS 3&4)  
MARYSVILLE, WA 98258

For:  
CAR WASH ENTERPRISES, INC.  
3977 LEARY WAY NW  
SEATTLE, WASHINGTON 98107

Scale:	Horizontal	AS NOTED	Vertical
Designed	Drawn	Checked	Approved
			SK
			Date
			09/21/20

Barghausen Consulting Engineers, Inc.  
18215 72nd Avenue South  
Kent, WA 98032  
425.251.6222  
barghausen.com

Job Number: 22681  
Sheet: CWA2.1  
of

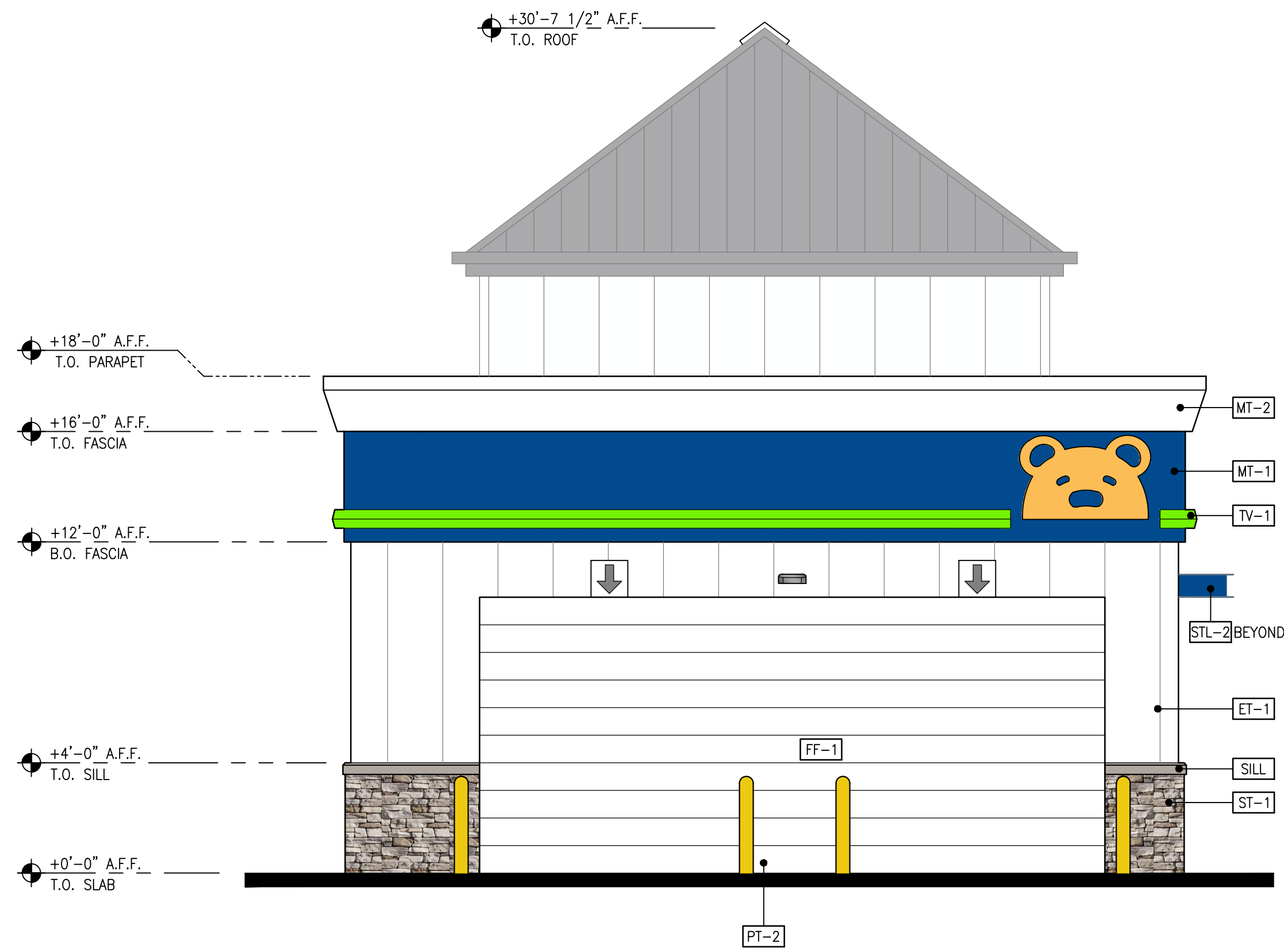
File Path: \\22000a\22681\architectural\22681\_CWA2.1\_ELEVATIONS.dwg Date/Time: 1/2/2024 8:41 AM Scale: 1:1  
RGARDNER Xref: ---



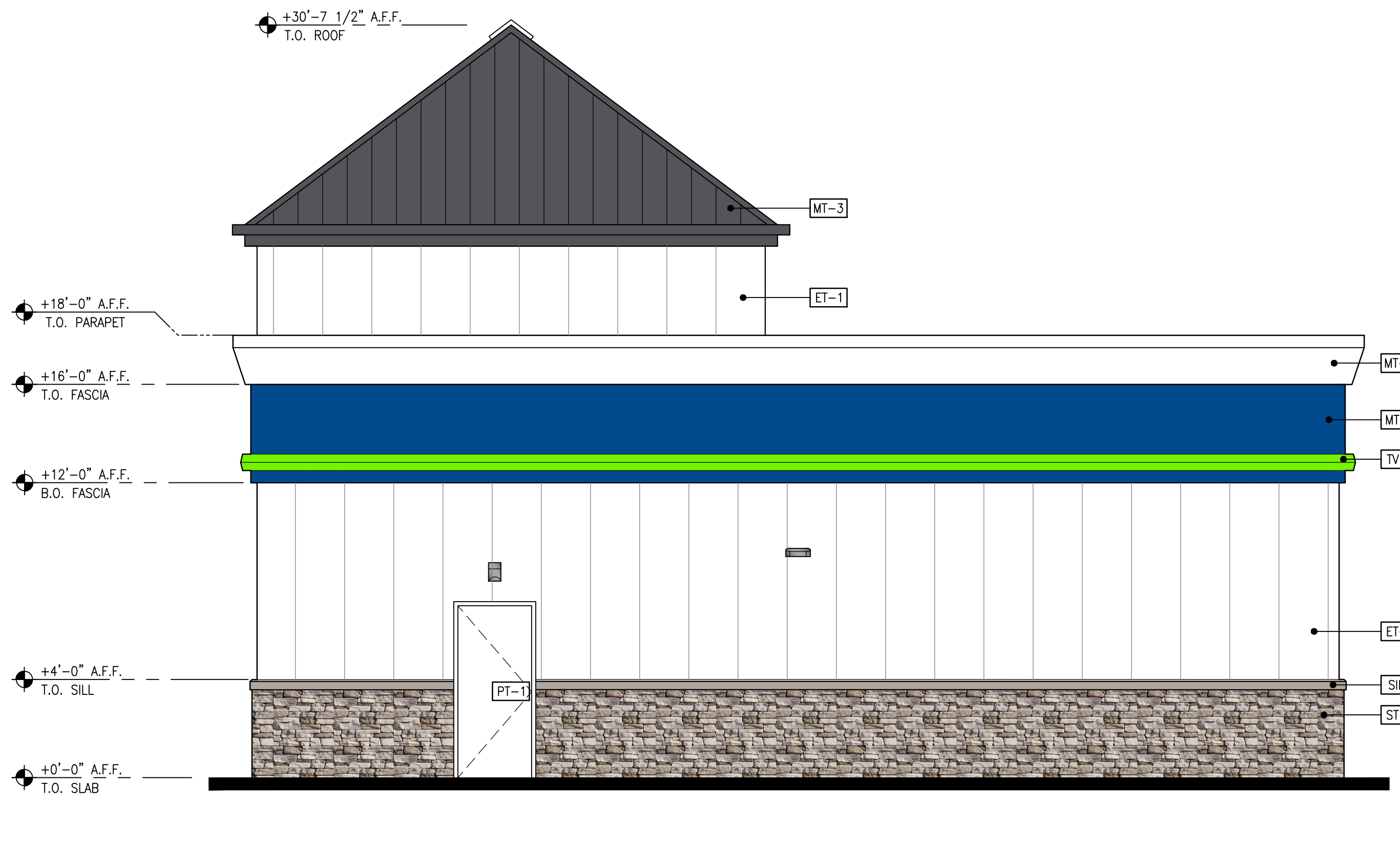
01 EAST ELEVATION - AUTO SENTRY  
 CWA2.2 SCALE: 1/4"=1'-0"



02 SOUTH ELEVATION - AUTO SENTRY  
 CWA2.2 SCALE: 1/4"=1'-0"



03 WEST ELEVATION - AUTO SENTRY  
 CWA2.2 SCALE: 1/4"=1'-0"



04 NORTH ELEVATION - AUTO SENTRY  
 CWA2.2 SCALE: 1/4"=1'-0"

**MATERIAL & COLOR LEGEND**

- AL-1 CLEAR ANODIZED STOREFRONT DOOR AND WINDOWS
- ET-1 EXTRUTECH PVC PANEL SYSTEM COLOR: GLOSS WHITE
- FF-1 STEEL ROLL-UP DOOR COLOR: FACTORY FINISH WHITE FRAME COLOR: PT-1
- MT-1 METAL FASCIA MFR: ALPOLIC, OR EQUAL COLOR: BLUE
- MT-2 METAL FASCIA MFR: ALPOLIC, OR EQUAL COLOR: WHITE TO MATCH PT-1
- MT-3 METAL ROOFING MFR: NU RAY COLOR: WEATHERED COPPER SR1-27
- PT-1 EXTERIOR PAINT MFR: SHERWIN WILLIAMS COLOR: SW7006 EXTRA WHITE
- PT-2 EXTERIOR PAINT MFR: SHERWIN WILLIAMS COLOR: SAFETY YELLOW
- ST-1 STONE VENEER MFR: ELDORADO STONE STYLE: CLIFFSTONE COLOR: BOARDWALK
- STL-1 STEEL CANOPY, PAINT BLUE
- STL-2 STEEL EYEBROW CANOPY, PAINT BLUE
- SILL STONE SILL PER MANUFACTURER ABOVE
- TV-1 HORIZONTAL ILLUMINATED CHANNEL TRIM COLOR: GREEN AKZO 443C5 WITH BRILLIANT GREEN TRANSLUCENT VINYL

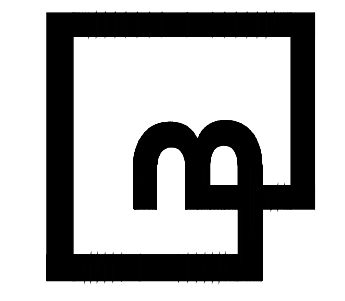
Revision No. Date By Ckd. Appr.

Title: AUTO SENTRY ELEVATIONS  
 BROWN BEAR CAR WASH  
 SR 9 & SOPER HILL RD (LOTS 3&4)  
 MARYSVILLE, WA 98258

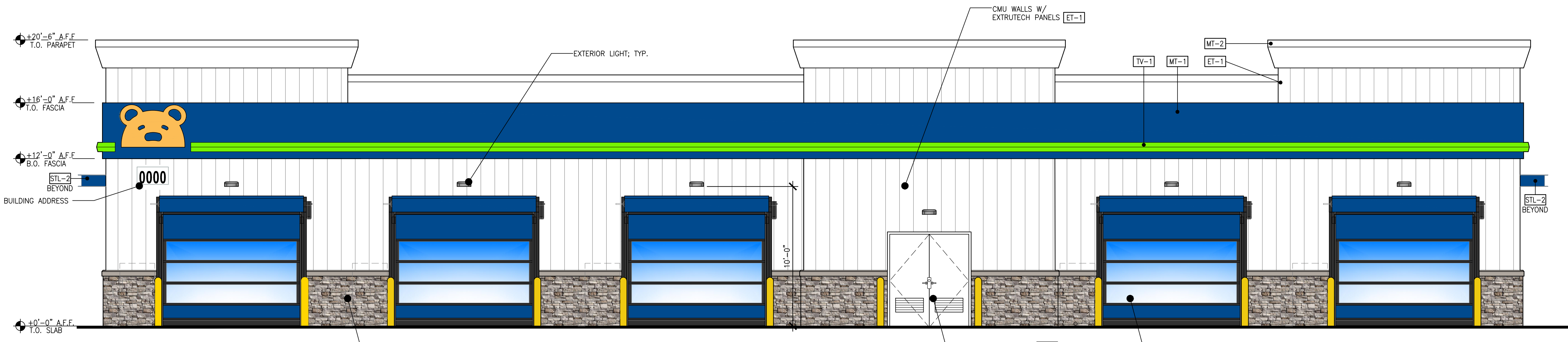
For: CAR WASH ENTERPRISES, INC.  
 3977 LEARY WAY NW  
 SEATTLE, WASHINGTON 98107

Scale: Horizontal AS NOTED Vertical  
 Designed Drawn Checked Approved Date 05/21/20

Barghausen Consulting Engineers, Inc.  
 18215 72nd Avenue South  
 Kent, WA 98032  
 425.251.6222 barghausen.com

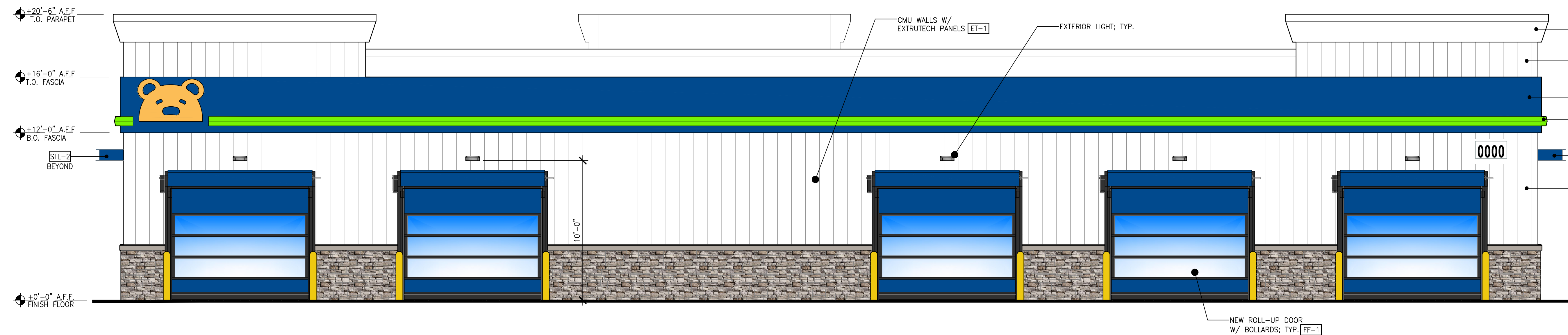


Job Number 22681  
 Sheet CWA2.2



01 SOUTH ELEVATION - RAZOR WASH  
 (RWA2.1) SCALE: 1/4"=1'-0"

- MAT'L & COLOR LEGEND**
- [AL-1] CLEAR ANODIZED STOREFRONT DOOR AND WINDOWS
  - [ET-1] EXTRUTECH PVC PANEL SYSTEM COLOR: GLOSS WHITE
  - [FF-1] STEEL ROLL-UP DOOR COLOR: FACTORY FINISH WHITE FRAME COLOR PT-1
  - [MT-1] METAL FASCIA MFR: ALPOLIC, OR EQUAL COLOR: BLUE
  - [MT-2] METAL FASCIA MFR: ALPOLIC, OR EQUAL COLOR: WHITE TO MATCH PT-1
  - [MT-3] METAL ROOFING MFR: NU RAY COLOR: WEATHERED COPPER SR1-27
  - [PT-1] EXTERIOR PAINT MFR: SHERWIN WILLIAMS COLOR: SW7006 EXTRA WHITE
  - [PT-2] EXTERIOR PAINT MFR: SHERWIN WILLIAMS COLOR: SAFETY YELLOW
  - [ST-1] STONE VENEER MFR: ELDERADO STONE STYLE: CLIFFSTONE COLOR: BOARDWALK
  - [STL-1] STEEL CANOPY, PAINT BLUE
  - [STL-2] STEEL EYEBROW CANOPY, PAINT BLUE
  - [SILL] STONE SILL PER MANUFACTURER ABOVE
  - [TV-1] HORIZONTAL ILLUMINATED CHANNEL TRIM COLOR: GREEN AKZO 443CS WITH BRILLIANT GREEN TRANSLUCENT VINYL



02 NORTH ELEVATION - RAZOR WASH  
 (RWA2.1) SCALE: 1/4"=1'-0"



03 WEST ELEVATION - RAZOR WASH  
 (RWA2.1) SCALE: 1/4"=1'-0"



04 EAST ELEVATION - RAZOR WASH  
 (RWA2.1) SCALE: 1/4"=1'-0"

Revision  
 No. Date By Cld. Appr.  
 Title: RAZOR WASH ELEVATIONS  
 BROWN BEAR CAR WASH  
 SR 9 & SOPER HILL RD (LOTS 3&4)  
 MARYSVILLE, WA 98258

For: CAR WASH ENTERPRISES, INC.  
 3977 LEARY WAY NW  
 SEATTLE, WASHINGTON 98107

Scale:  
 Horizontal  
 Vertical

Designed \_\_\_\_\_  
 Drawn \_\_\_\_\_  
 Checked \_\_\_\_\_  
 Approved \_\_\_\_\_  
 Date \_\_\_\_\_

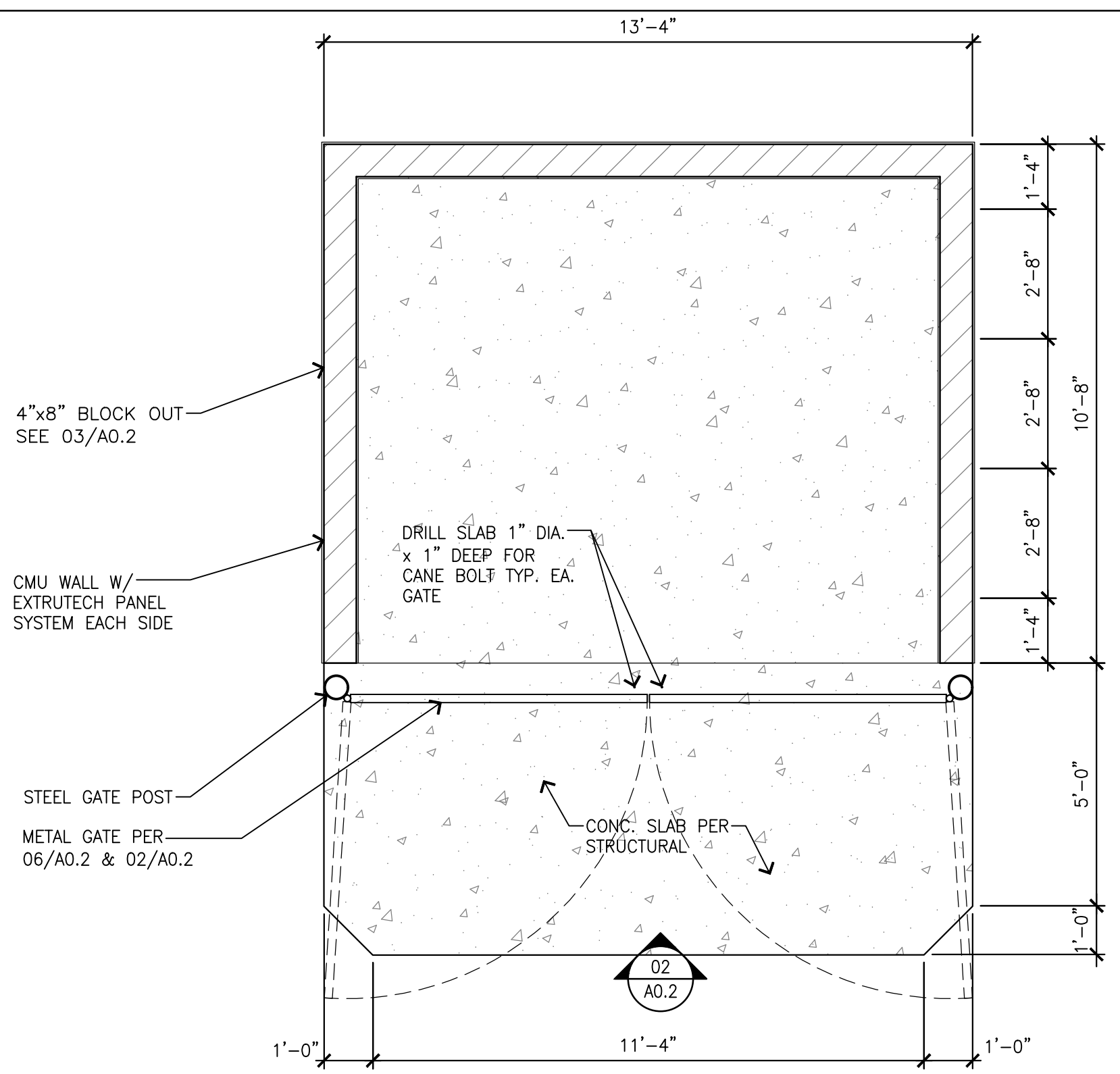
**Barghausen Consulting Engineers, Inc.**  
 18215 72nd Avenue South  
 Kent, WA 98032  
 425.251.6222 [barghausen.com](http://barghausen.com)

Job Number: 22681  
 Sheet: RWA2.1  
 of

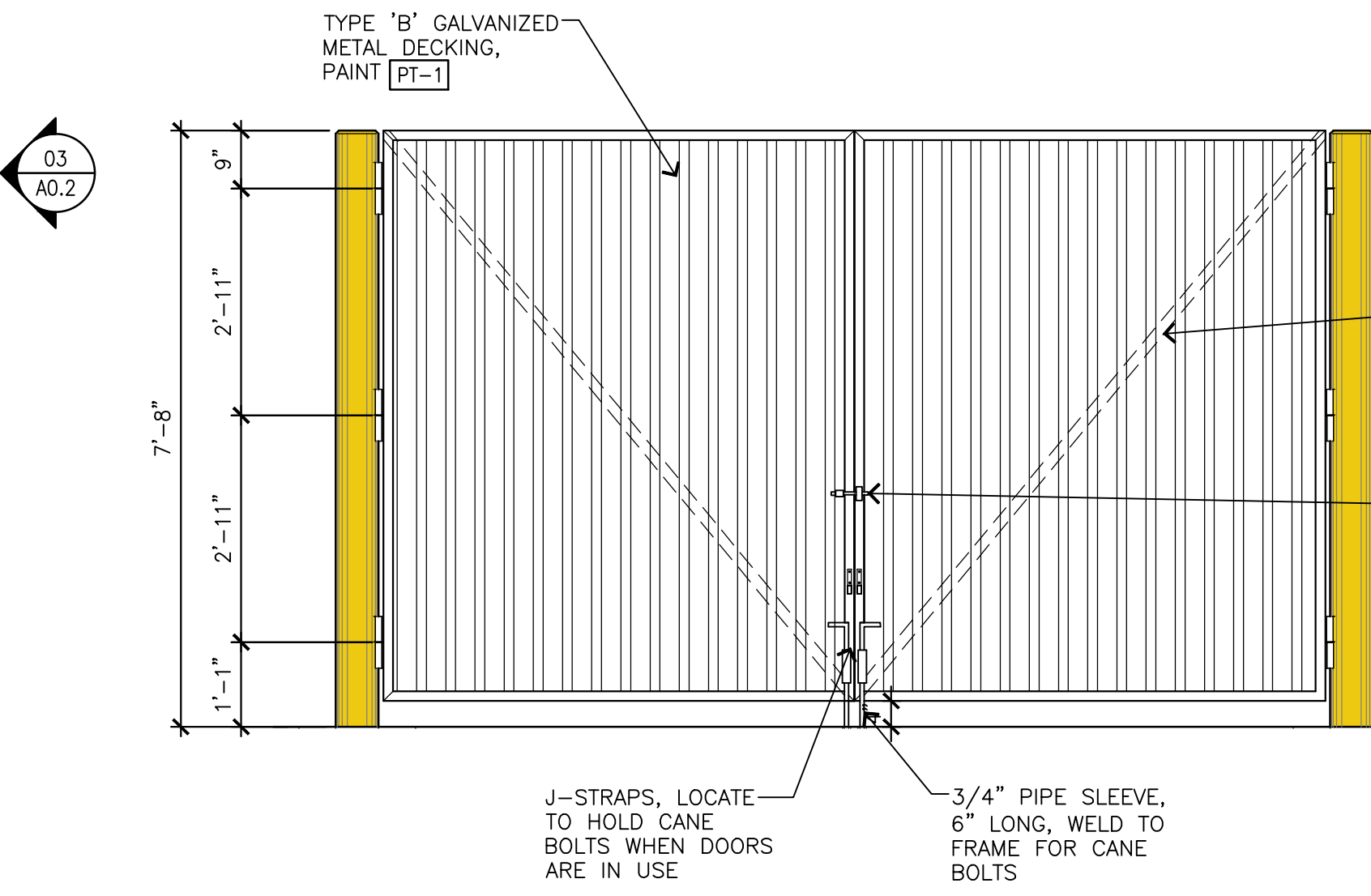
FileP:\22000s\22681\Architectural\Elevations.dwg Date/Time:1/2/2024 8:33 AM Scale:1:1 RCHARDNER Xref: -----

**COLOR LEGEND**

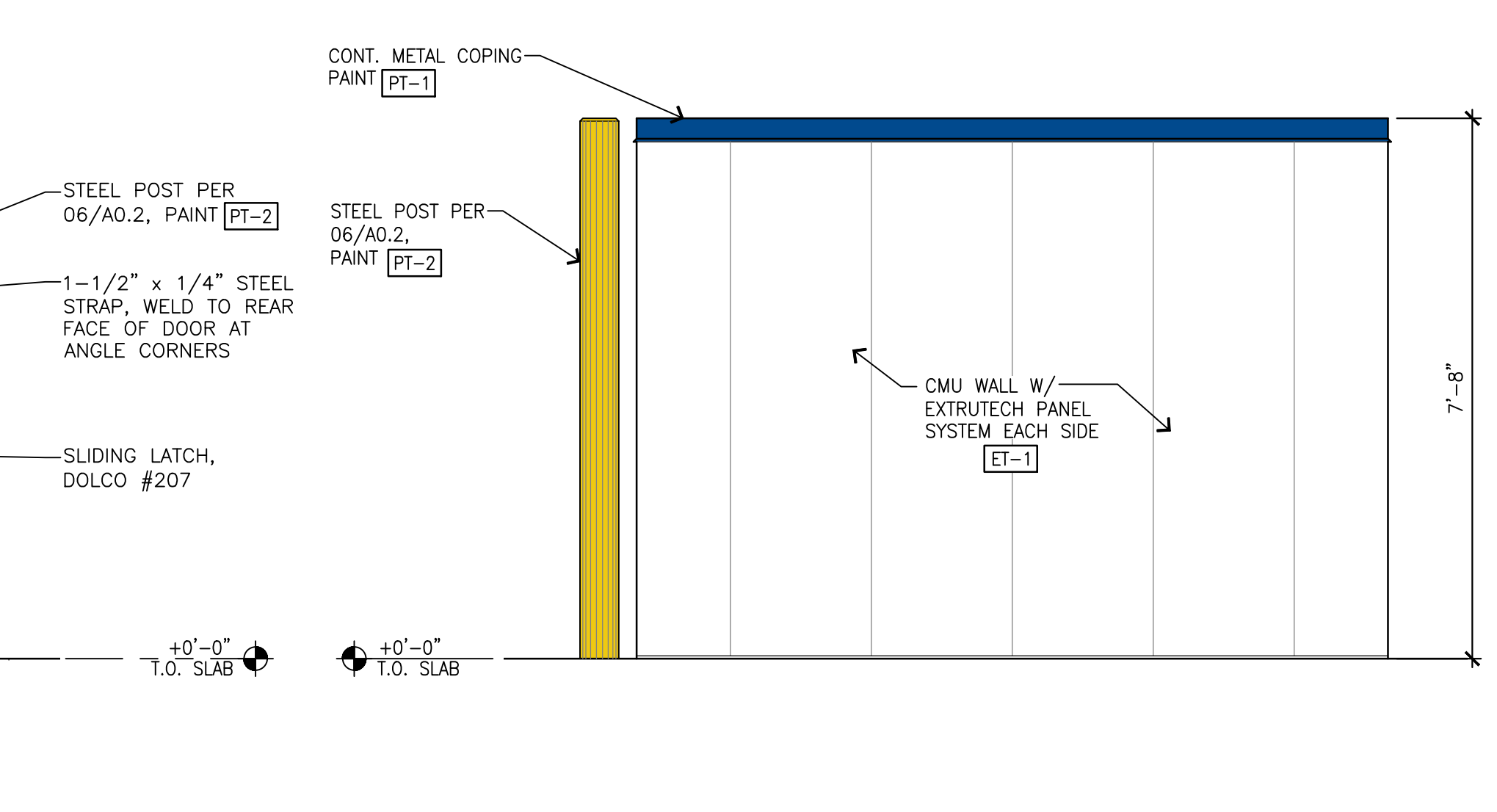
- ET-1** EXTRUTECH PVC PANEL SYSTEM  
COLOR: GLOSS WHITE
- PT-1** EXTERIOR PAINT  
MFR: SHERWIN WILLIAMS  
COLOR: SW7006 EXTRA WHITE
- PT-2** EXTERIOR PAINT  
MFR: SHERWIN WILLIAMS  
COLOR: SAFETY YELLOW
- MT-3** METAL ROOFING  
MFR: NU RAY  
COLOR: WEATHERED COPPER  
SR1-27



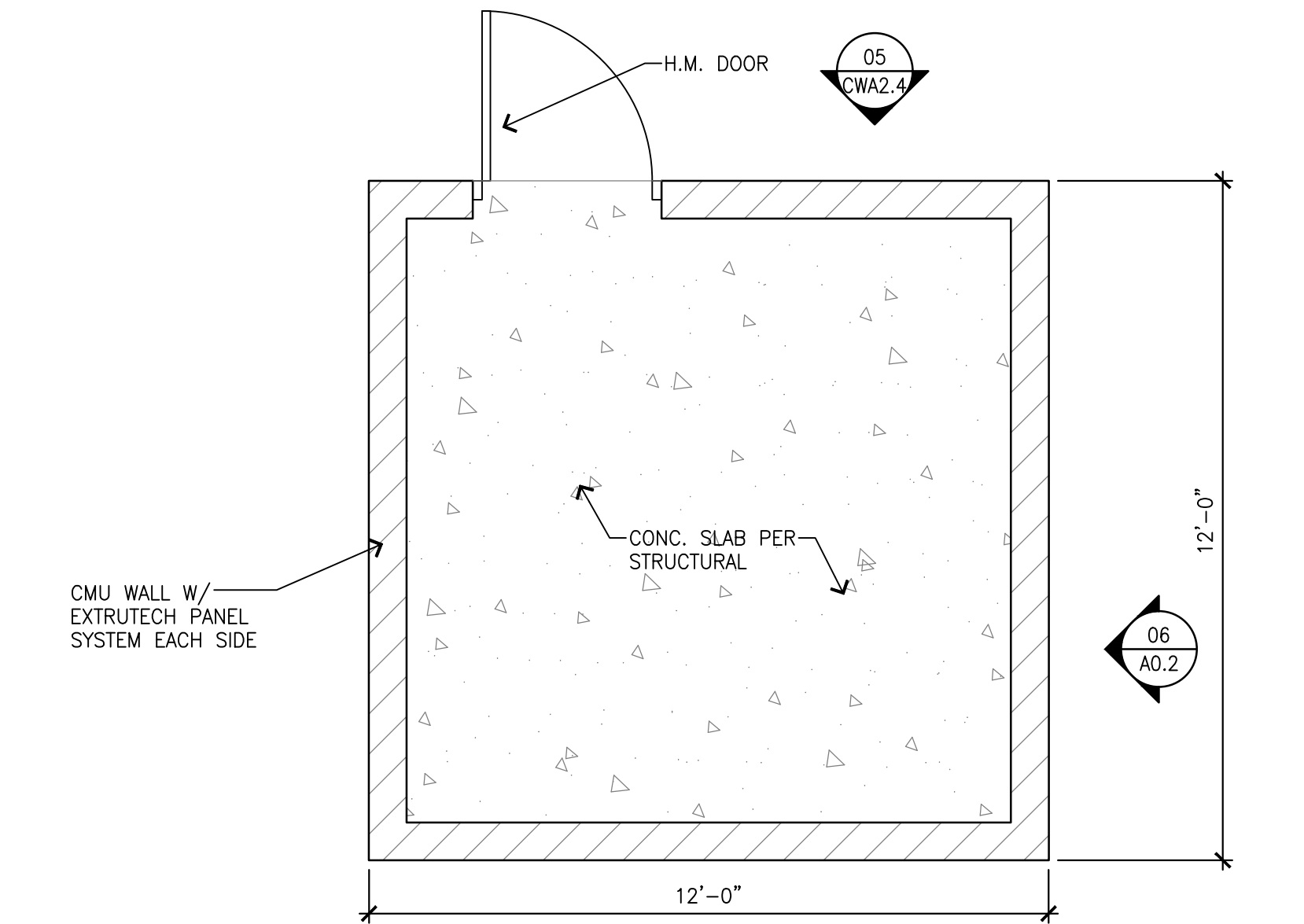
**01 TRASH ENCLOSURE - PLAN**  
CWA2.4 SCALE: 3/8"=1'-0"



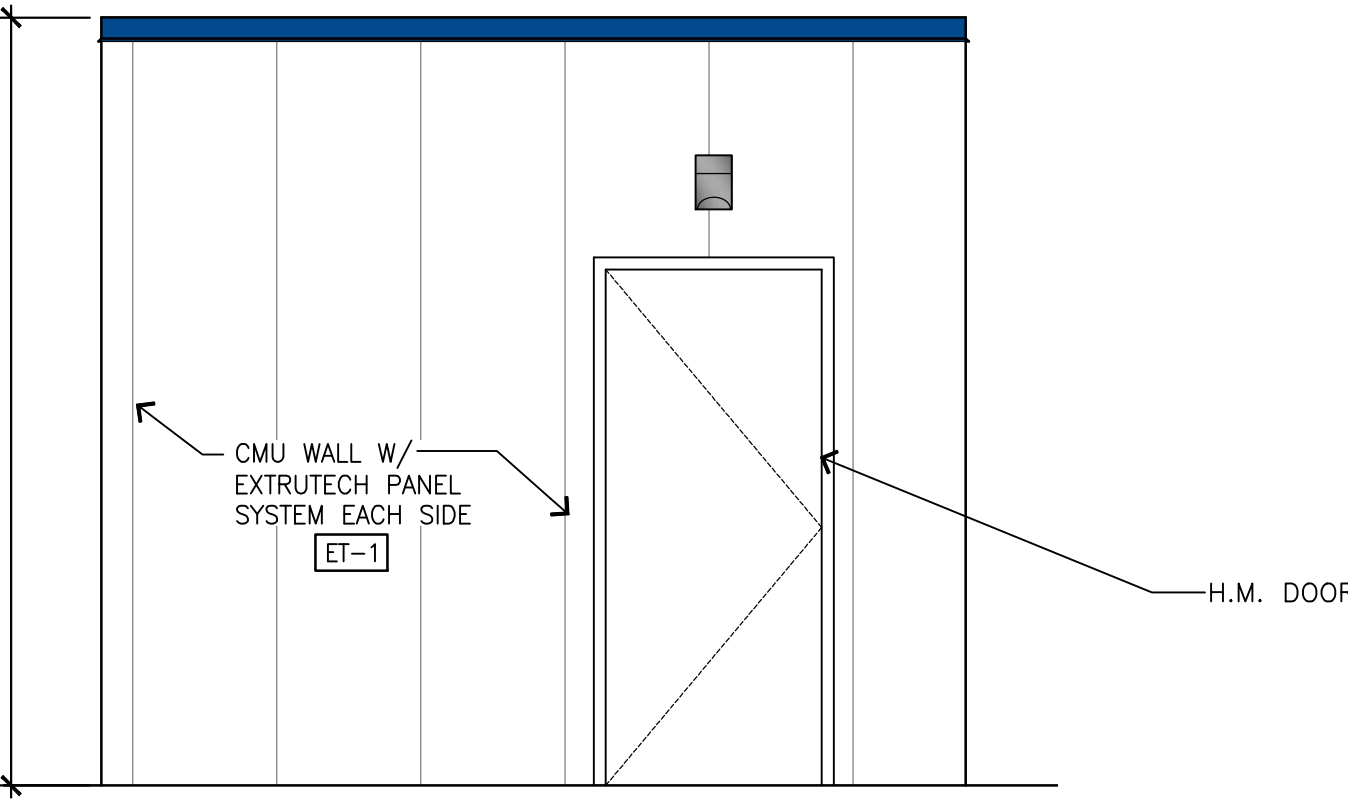
**02 FRONT ELEVATION**  
CWA2.4 SCALE: 1/2"=1'-0"



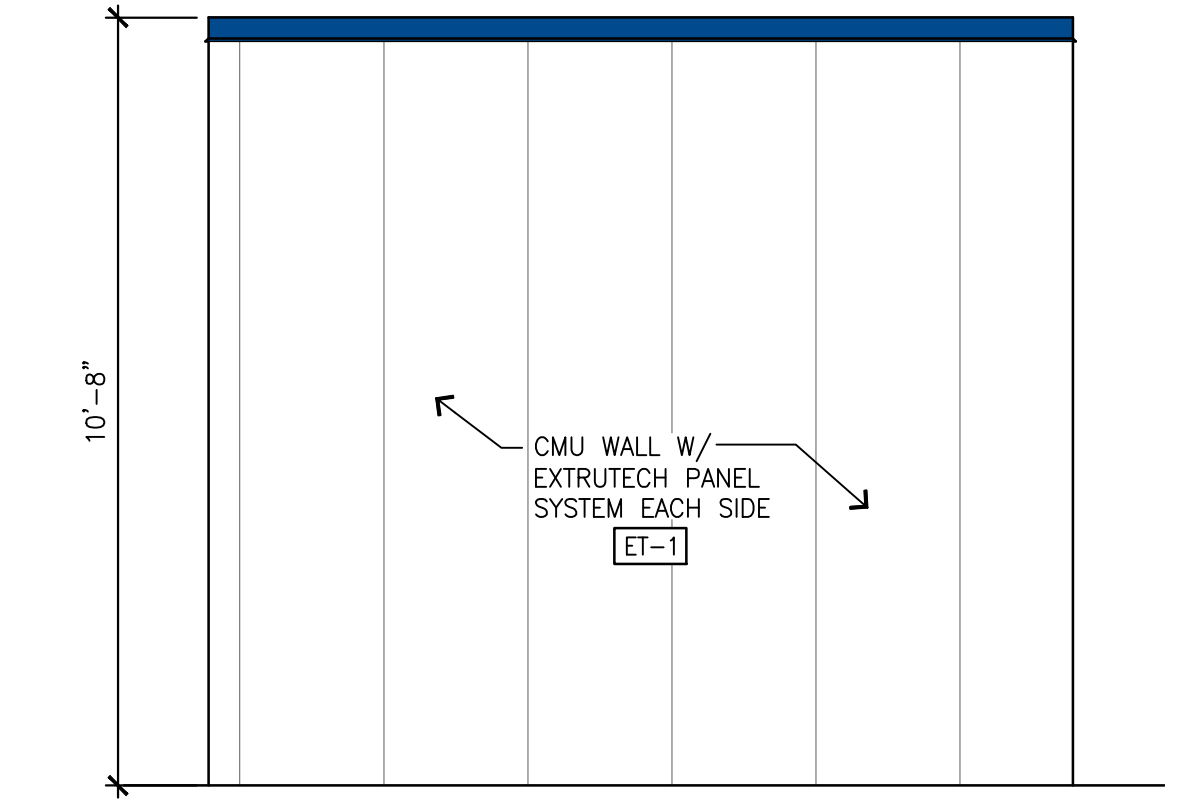
**03 SIDE ELEVATION**  
CWA2.4 SCALE: 1/2"=1'-0"



**04 VACUUM HUT - FLOOR PLAN**  
CWA2.4 SCALE: 3/8"=1'-0"



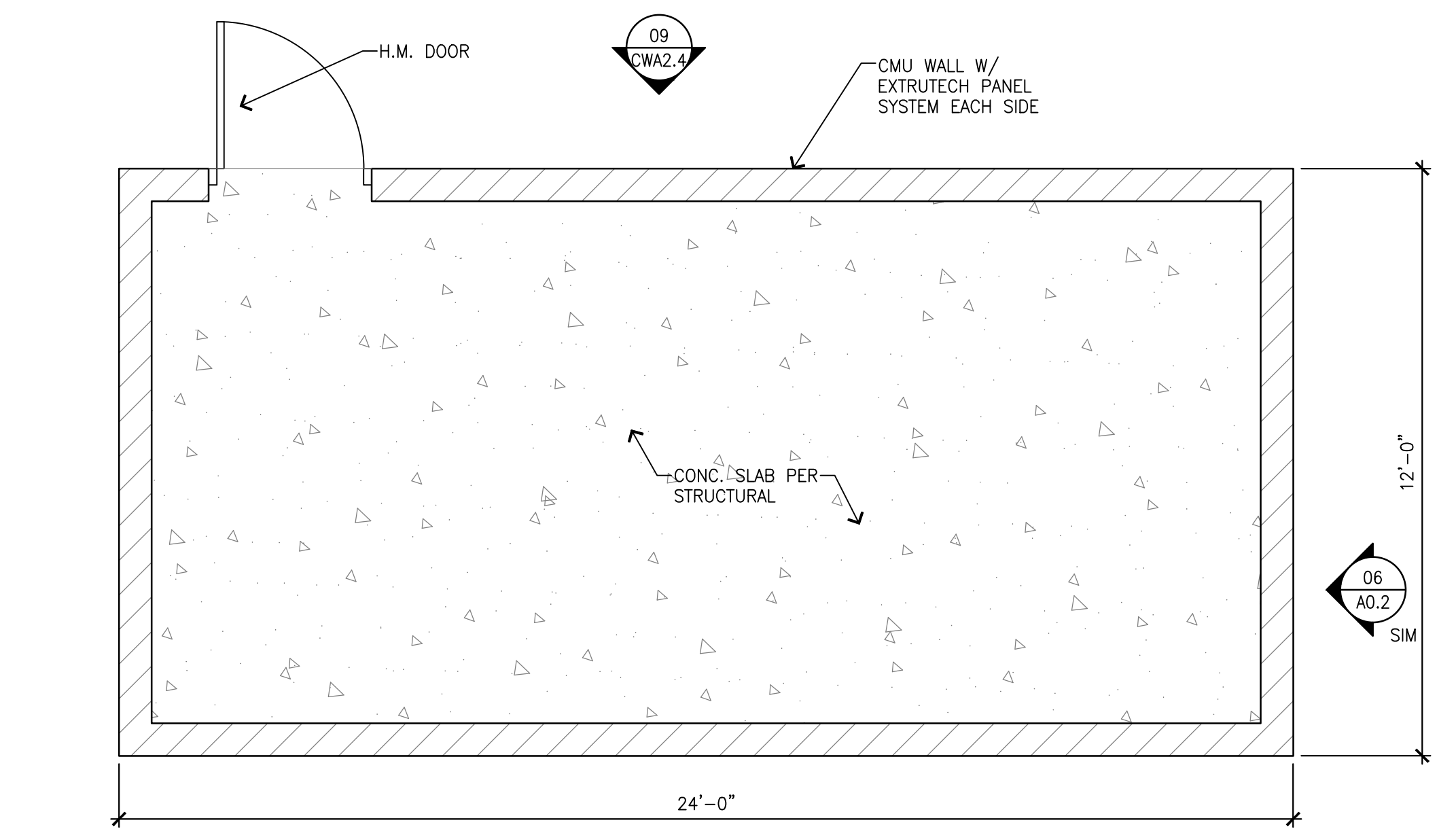
**05 VACUUM HUT - FRONT ELEVATION**  
CWA2.4 SCALE: 3/8"=1'-0"



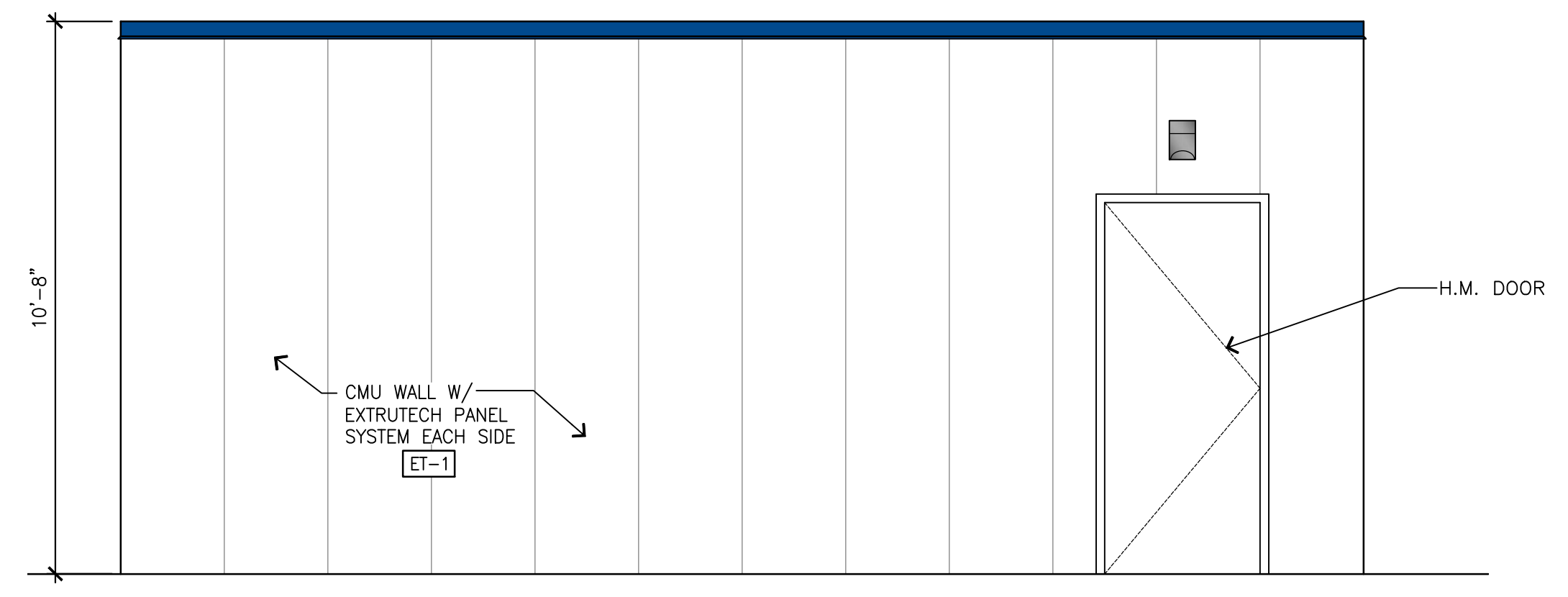
**06 VACUUM HUT - SIDE ELEVATION**  
CWA2.4 SCALE: 3/8"=1'-0"



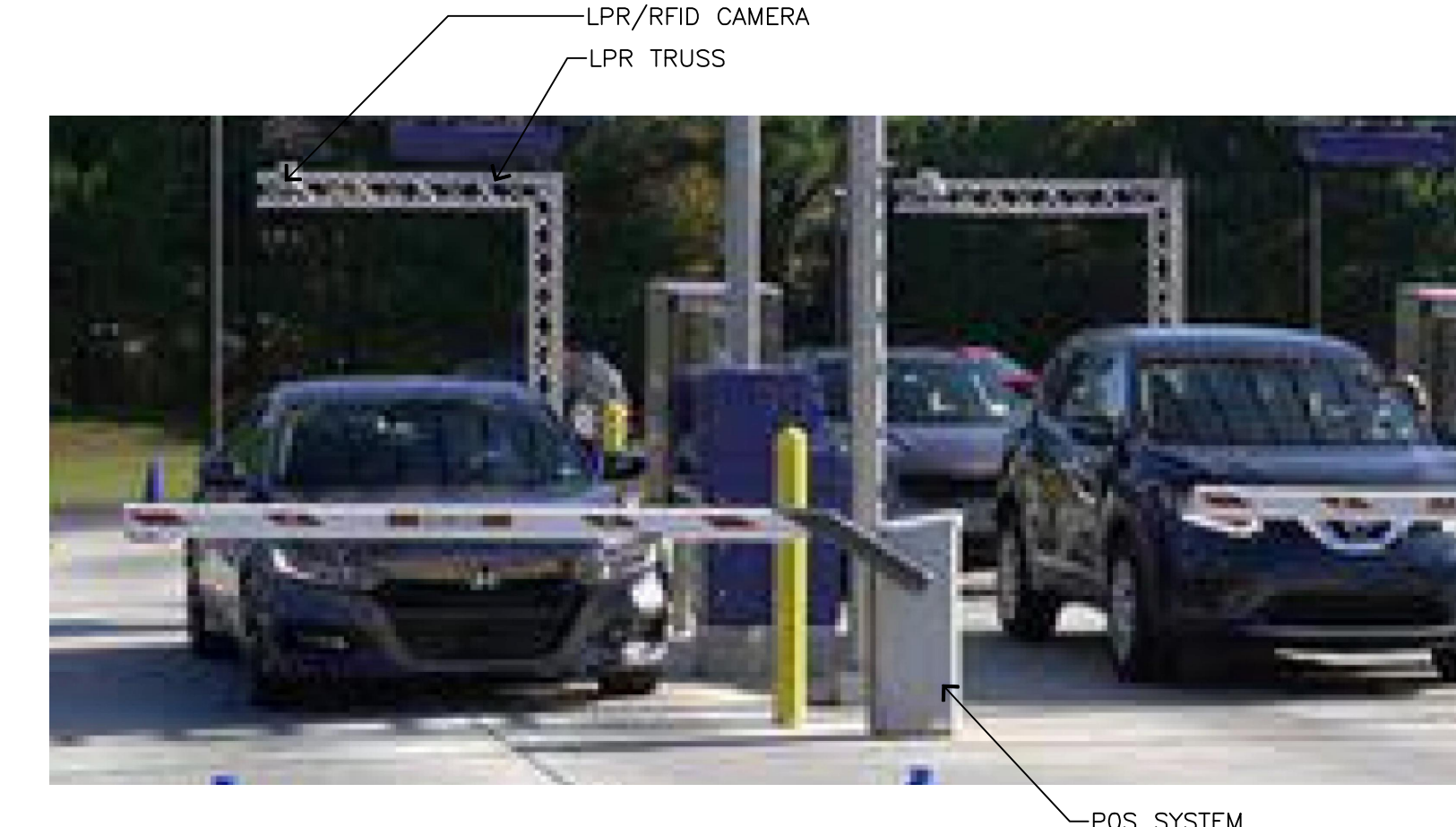
**07 VACUUM SYSTEM WITH FABRIC AWNING**  
CWA2.4 SCALE: N.T.S.



**08 VACUUM HUT - FLOOR PLAN**  
CWA2.4 SCALE: 3/8"=1'-0"



**09 VACUUM HUT - FRONT ELEVATION**  
CWA2.4 SCALE: 3/8"=1'-0"



**10 LICENSE PLATE READER (LPR)**  
CWA2.4 SCALE: N.T.S.

No.	Date	By	Chk.	Appr.	Revision

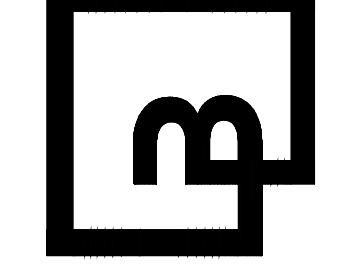
**AUTOSHIELD ENTERPRISES**  
BROWN BEAR CAR WASH  
SR 9 & SOPER HILL RD (LOTS 3&4)  
MARYSVILLE, WA 98258

**CAR WASH ENTERPRISES, INC.**  
3977 LEARY WAY NW  
SEATTLE, WASHINGTON 98107

For: **FABRIC AWNING**  
**VACUUM UNIT**

Scale:	Horizontal	AS NOTED	Vertical
Designed	Drawn	Checked	Approved
Date	05/21/20		

**Barghausen Consulting Engineers, Inc.**  
18215 72nd Avenue South  
Kent, WA 98032  
425.251.6222 [barghausen.com](http://barghausen.com)



Job Number: **22681**  
Sheet: **CWA2.4**