

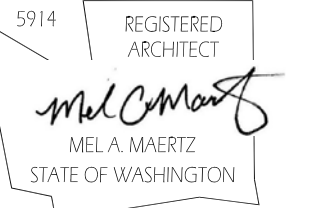


M2 ARCHITECTS

ARCHITECTURE & PLANNING

1111 CLEVELAND AVENUE, SUITE 102
MOUNT VERNON, WA 98273
TEL: 206.354.7100

REGISTRATION



PROJECT

SOPER HILL KIDS 'N US

8727 - SOPER HILL ROAD
MARYSVILLE, WA

DESIGN TEAM

PROJECT NO. 22-007

PRINCIPAL MM

DRAWN BY

CHECKED BY MM

DATE 09/29/2022

ISSUE / REVISIONS

01/10/2023 PRE-APPLICATION

07/24/2023 PERMIT SUBMITTAL

CONSULTANTS

SHEET TITLE

EXTERIOR
BUILDING ELEVATIONS

SHEET NO.

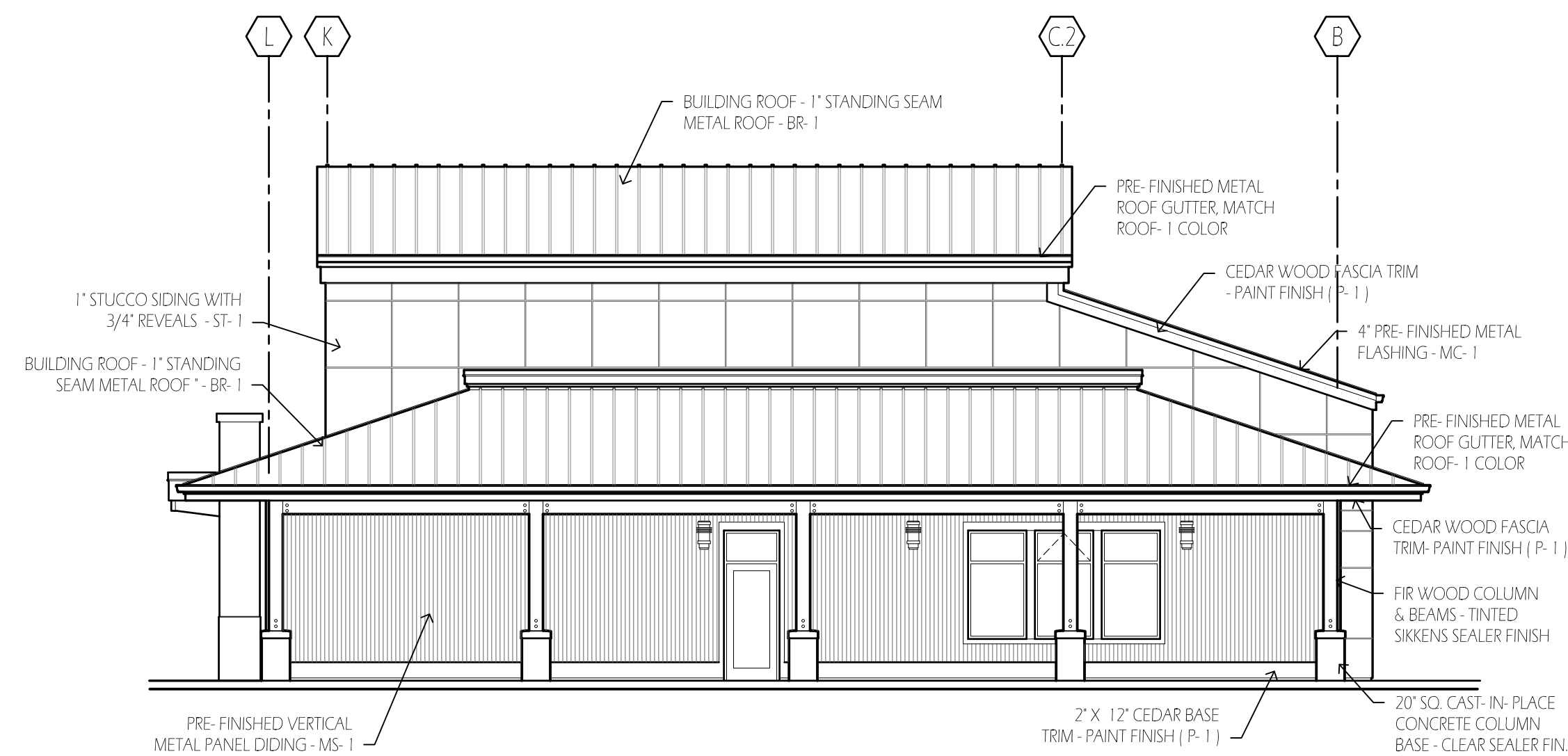
A-3.01



1 SOUTH BUILDING ELEVATION
SCALE: 1/8" = 1'-0"

SOPER HILL KIDS 'N US - EXTERIOR FINISH LEGEND:

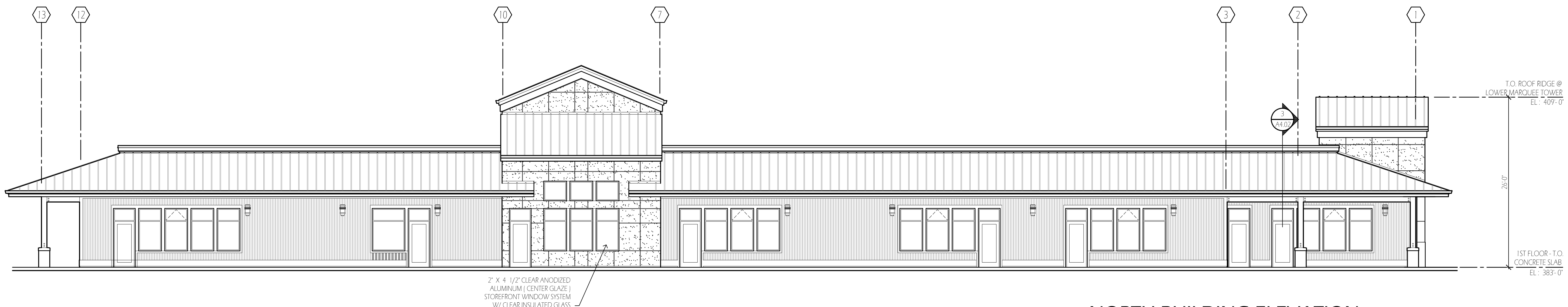
MATERIAL / FINISH:	DESIGNATION:
BUILDING ROOF 1 - PRE-FINISHED 1" STANDING SEAM METAL ROOF, AEP SPAN SELECT SEAM - NARROW BATTEN; DURA TECH 5000 - COLOR "COOL SLATE GRAY"	BR-1
PRE-FINISHED 4" METAL COPING / FLASHING, SEMI-GLOSS ENAMEL - COLOR TO MATCH BR-1	MC-1
PRE-FINISHED METAL PANEL VERTICAL SIDING - "AEP SPAN"; NU-WAVE CORRUGATED SERIES - COLOR "METALIC CHAMPAGNE"	MS-1
1" STUCCO & INTEGRAL ELASTOMERIC FINISH SIDING WITH 3/4" HORIZONTAL & VERTICAL REVEALS - "DRIVIT CALIFORNIA"; SANDBLAST TEXTURE - PAINT COLOR - "SW-6106, KILIM BEIGE"	ST-1
CEDAR BOARD FASCIA & TRIM: ENAMEL PAINT COLOR - "SW-6106, KILIM BEIGE"; SATIN FINISH	P-1
HOLLOW METAL DOOR & FRAME: ENAMEL PAINT COLOR - "SW-6106, KILIM BEIGE"; SEMI-GLOSS FINISH	P-2
PRECAST VENEER STONE SIDING - ELDERADO STONE EUROPEAN LEDGE STONE - COLOR "GLACIER"	VS-1
VERTICAL BOARD SIDING - NICHIIHA "VINTAGEWOOD"; COLOR: "BARK"	VBS-1
VINYL WINDOW SYSTEM WITH 1" CLEAR INSULATED "ADVANCED LOW-E" GLASS AND 1" OFFSET FIN; MILGARD; STYLE LINE OR EQUJEL SERIES - WHITE	WS-1
SURFACE MOUNTED WALL LIGHT FIXTURE - HINKLEY MANHATTAN WALL SCONCE, 15" HIGH - BRONZE FINISH	LF-1



3 EAST BUILDING ELEVATION
SCALE: 1/8" = 1'-0"



2 WEST BUILDING ELEVATION
SCALE: 1/8" = 1'-0"



4 NORTH BUILDING ELEVATION
SCALE: 1/8" = 1'-0"