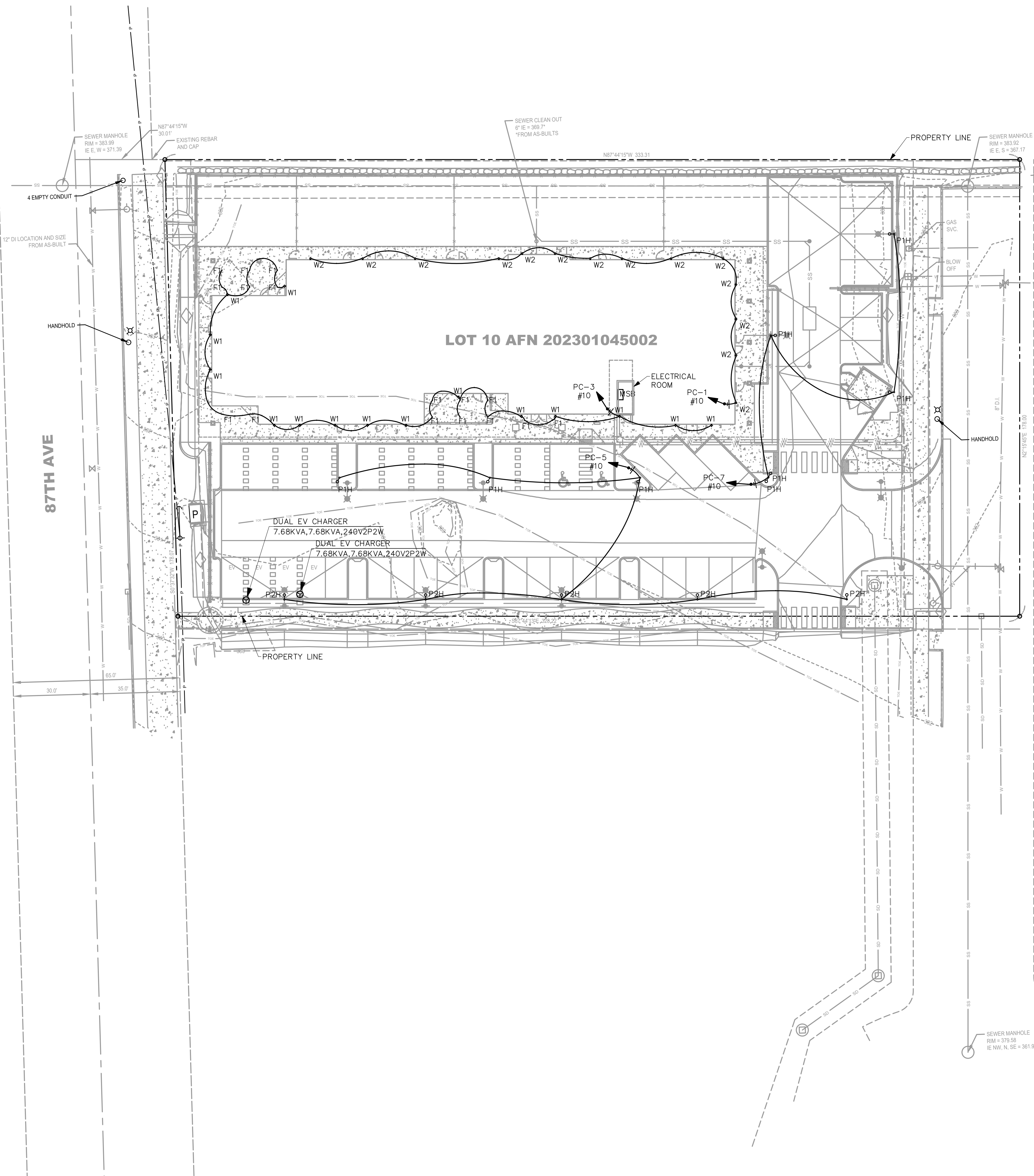


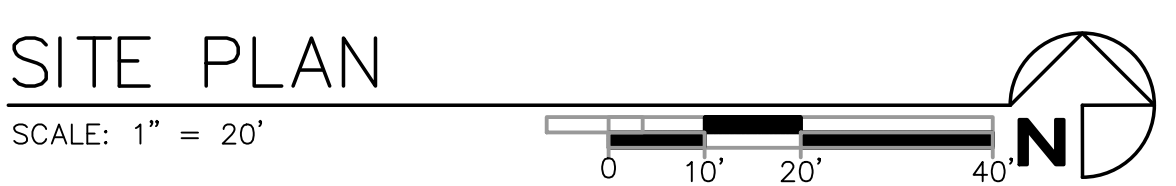
- ### GENERAL NOTES
- MOUNTING HEIGHT (MH) LISTED IN LUMINAIRE SCHEDULE SHALL BE FROM ABOVE GRADE TO BOTTOM OF COMPLETE EXPOSED FIXTURE.
 - ALL EXTERIOR MOUNTED LIGHTING SHALL BE CONTROLLED BY PHOTOCONTROL PER WASHINGTON STATE ENERGY CODE (WSEC) REQUIREMENTS C405.2.6.
 - DURING EMERGENCY CONDITIONS EMERGENCY LIGHTING CIRCUITS SHALL BYPASS ALL LIGHTING CONTROLS IN ORDER TO ENERGIZE ALL CONNECTED LUMINAIRES AT FULL CAPACITY. PROVIDE UL924 RELAYS AS REQUIRED TO BYPASS AREA CONTROLS.
 - EMERGENCY PATHWAY EGRESS LIGHTING: EMERGENCY LIGHTING FACILITIES SHALL BE ARRANGED TO PROVIDE INITIAL ILLUMINATION THAT IS NOT LESS THAN AN AVERAGE OF 1 FOOT CANDLE. (IBC 1008.3.5)
 - OUTDOOR ACTIVITY AREAS MUST MAINTAIN A MINIMUM EMERGENCY LIGHTING LEVEL OF 3 FOOT CANDLES MEASURED THIRTY INCHES ABOVE THE WORKING SURFACE PER WAC 296-79-070.



EXTERIOR LUMINAIRE SCHEDULE

CALLOUT	SYMBOL	MOUNTING	DESCRIPTION	MODEL	VOLTAGE	TYPE	LAMPING	NOTES
F1	.	CEILING	3" LED DOWNLIGHT	LITHONIA LTG: WF3 LED 27K [FINISH]	120	ELECTRONIC	(1) 8W LED 2700K 80CRI	
P1H	⊖	POLE	AREA POLE LIGHT WITH TYPE V NARROW OPTICS MH: 14'	COOPER LIGHTING: MCGRAW-EDISON: GLNA-AF-01-LED-E1-SL2-7027	120	0-10V DIMMING	(1) 59W LED 2700K 70CRI	
P2H	⊖	POLE	AREA POLE LIGHT WITH TYPE IV SQUARE WIDE OPTICS MH: 14'	COOPER LIGHTING MCGRAW-EDISON: GLNA-AF-01-LED-E1-SL4-7027	120	0-10V DIMMING	(1) 59W LED 2700K 70CRI	
P3H	⊖	POLE	AREA POLE LIGHT WITH TYPE IV WIDE OPTICS MH: 14'	COOPER LIGHTING MCGRAW-EDISON: GLNA-AF-01-LED-E1-T4W-7027	120	0-10V DIMMING	(1) 59W LED 2700K 70CRI	
W1	•	WALL	15" DECORATIVE WALL SCONCE WITH LED BULB(100W EQUV.) MH: 8'	FIXTURE HINKLEY: MANHATTAN 23240Z MEDIUM WALL MOUNT LANTERN BULB SATCO: S12442(BASE: E26, SHAPE: A19)	120	NO DIMMING	(1) 12.5W LED 2700K 90CRI	MANUFACTURER TO PROVIDE 12.5 WATT MAXIMUM WATTAGE LABEL.
W2	•	WALL	WALL SCONCE MH: 8'	LITHONIA LTG: WDGE2 LED P0 27K 80CRI T51 MVOLT SRM DMG [FINISH]	120	0-10V DIMMING	(1) 18W LED 2700K 80CRI	

- NOTES:
- CONTRACTOR TO FURNISH AND INSTALL ALL FIXTURES.
 - LUMINAIRE SCHEDULE IS BID ONLY. CONTRACTOR TO SUBMIT FIXTURE MODEL OR EQUIVALENT. CONTRACTOR TO COORDINATE FIXTURE FINISHES WITH ARCHITECT/OWNER.
 - FIXTURE CATALOG NUMBERS DO NOT NECESSARILY DENOTE SPECIFIC MOUNTING ACCESSORIES. CONTRACTOR TO PROVIDE ALL NECESSARY ACCESSORIES TO SUCCESSFULLY COMPLETE THE INSTALLATION.
 - CONTRACTOR SHALL COORDINATE LANDSCAPE LIGHT FIXTURES LOCATIONS WITH PLANTING AND HARDSCAPE VIA THE ARCHITECT.
 - CONTRACTOR TO FIELD VERIFY ALL DISTANCES, LENGTHS, AND QUANTITIES.
 - NOT LESS THAN 90 PERCENT OF LAMPS IN PERMANENTLY INSTALLED LIGHTING FIXTURES SHALL BE HIGH-EFFICACY LAMPS PER 2018 WSEC R404.1.
 - BID ALLOWANCES: PROVIDE ALLOWANCE IN BID OF \$150.00 EACH FOR MODEL "TBD" LUMINAIRES WHICH HAVE NOT BEEN SELECTED AT TIME OF BID.



NO.	DATE	DESCRIPTION

ROBISON ENGINEERING, INC.
 PHONE: (206) 364-3345
 FAX: (206) 364-3345
 CONTACT: JOSH REED

PROJECT: **SOPER HILL - KIDS 'N US**
 0000 - HIGHWAY 9, MARYSVILLE, WA 98270

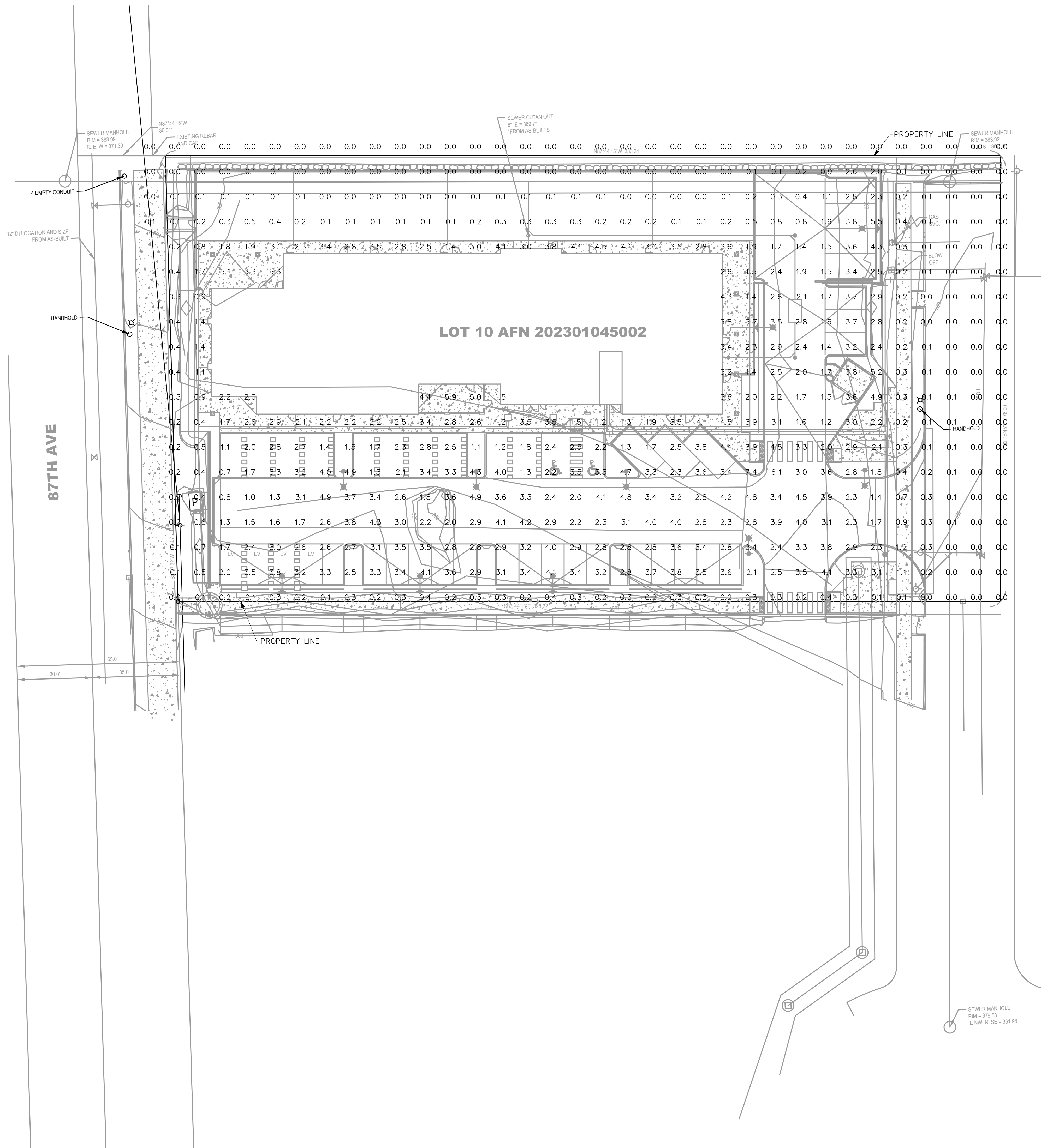
19401 40TH AVE W, SUITE 302
 LYNNWOOD, WA 98036

ROBISON ENGINEERING, INC.

DATE: 05/12/2023

SHEET TITLE: SITE PLAN

SHEET NO. **E0.10**



- ### GENERAL NOTES
1. MOUNTING HEIGHT (MH) LISTED IN LUMINAIRE SCHEDULE SHALL BE FROM ABOVE GRADE TO BOTTOM OF COMPLETE EXPOSED FIXTURE.
 2. ALL EXTERIOR MOUNTED LIGHTING SHALL BE CONTROLLED BY PHOTOCONTROL OR ASTRONOMIC TIME-CLOCK SCHEDULING PER WASHINGTON STATE ENERGY CODE (WSEC) REQUIREMENTS C405.2.6.
 3. DURING EMERGENCY CONDITIONS EMERGENCY LIGHTING CIRCUITS SHALL BYPASS ALL LIGHTING CONTROLS IN ORDER TO ENERGIZE ALL CONNECTED LUMINAIRES AT FULL CAPACITY. PROVIDE UL924 RELAYS AS REQUIRED TO BYPASS AREA CONTROLS.
 - 3.1. EMERGENCY PATHWAY EGRESS LIGHTING: EMERGENCY LIGHTING FACILITIES SHALL BE ARRANGED TO PROVIDE INITIAL ILLUMINATION THAT IS NOT LESS THAN AN AVERAGE OF 1 FOOTCANDLE. (IBC 1008.3.5)

General Photometric Schedule

AVERAGE FOOT-CANDLES	1.57
MAXIMUM FOOT-CANDLES	7.4
MINIMUM FOOT-CANDLES	0.0
MINIMUM TO MAXIMUM FC RATIO	0.00
MAXIMUM TO MINIMUM FC RATIO	7.38 / 0.00
AVERAGE TO MINIMUM FC RATIO	1.57 / 0.00

SITE PHOTOMETRIC PLAN
SCALE: 1" = 20'

NO.	DATE	DESCRIPTION	REVISIONS

ROBISON ENGINEERING, INC.
PHONE: (206) 364-3345
FAX: (206) 364-3346
CONTACT: JOSH REED

PROJECT: **SOPER HILL - KIDS 'N US**
0000 - HIGHWAY 9, MARYSVILLE, WA 98270

19401 40TH AVE W, SUITE 302
LYNNWOOD, WA 98036

ROBISON ENGINEERING, INC.

DATE: 05/12/2023

SHEET TITLE: **SITE PHOTOMETRIC PLAN**

SHEET NO. **E0.11**